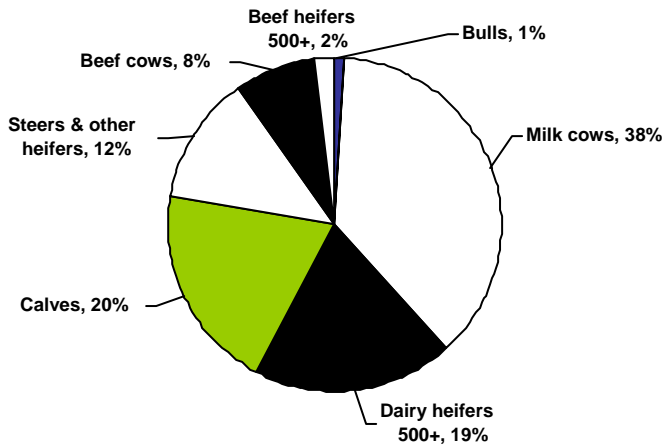


CATTLE AND CALVES: Number by Class, Wisconsin, January 1, 2005-2009

Year	All cattle and calves	Milk cows	Beef cows	Bulls 500 lbs. +	Replacement heifers		Other heifers 500 lbs. +	Steers 500 lbs. +	Calves under 500 lbs.
					Dairy 500 lbs. +	Beef 500 lbs. +			
1,000 head									
2005	3,350	1,235	245	30	650	70	80	360	680
2006	3,350	1,240	250	30	660	70	70	350	680
2007	3,350	1,245	265	30	650	70	60	350	680
2008	3,350	1,250	270	30	655	65	60	360	660
2009	3,350	1,255	265	30	650	65	55	360	670

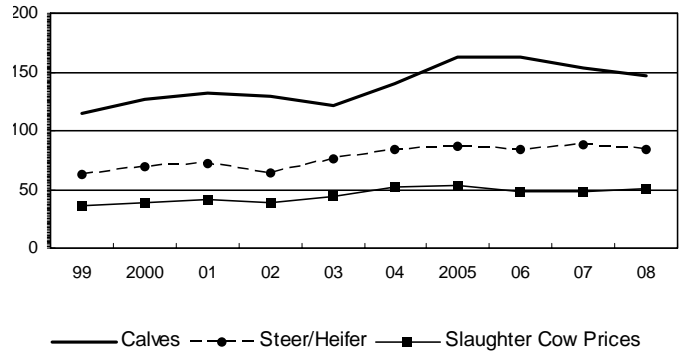
Wisconsin Cattle Inventory

January 1, 2009



WISCONSIN CATTLE PRICES

Dollars per hundred weight



CATTLE AND CALVES: Inventory, Supply, and Disposition, Wisconsin, 2004-2008

Year	All cattle and calves January 1	Calf crop	Inshipment	Marketings		Farm slaughter cattle & calves	Deaths	
				Cattle	Calves		Cattle	Calves
1,000 head								
2004	3,350	1,340	80	743	465	7	70	135
2005	3,350	1,350	83	766	455	7	65	140
2006	3,350	1,350	130	811	452	7	75	135
2007	3,350	1,360	95	790	448	7	75	135
2008	3,350	1,350	92	798	432	7	70	135

CATTLE AND CALVES: Production, Average Price, and Income, Wisconsin, 2004-2008

Year	Production	Marketings	Price per 100 pounds		Cash receipts	Value of home consumption	Gross Income
			Cattle	Calves			
	1,000 pounds		Dollars		1,000 dollars		
	2004	1,054,754	1,077,400	65.00	140.00	813,166	19,172
2005	1,078,403	1,103,550	66.70	163.00	888,752	20,229	908,981
2006	1,126,523	1,181,850	63.30	163.00	911,868	19,559	931,427
2007	1,111,737	1,127,700	65.00	154.00	856,056	20,508	876,564
2008	1,082,116	11,119,290	65.10	147.00	820,222	20,407	840,629