



# Wisconsin Crop Weather

Compiled by the Wisconsin Agricultural Statistics Service

May 7, 2001 - 3 p.m.

Vol. 01, No. 6

## Southern Wisconsin Continues Planting; Northern Wisconsin Waits for Dry Soils

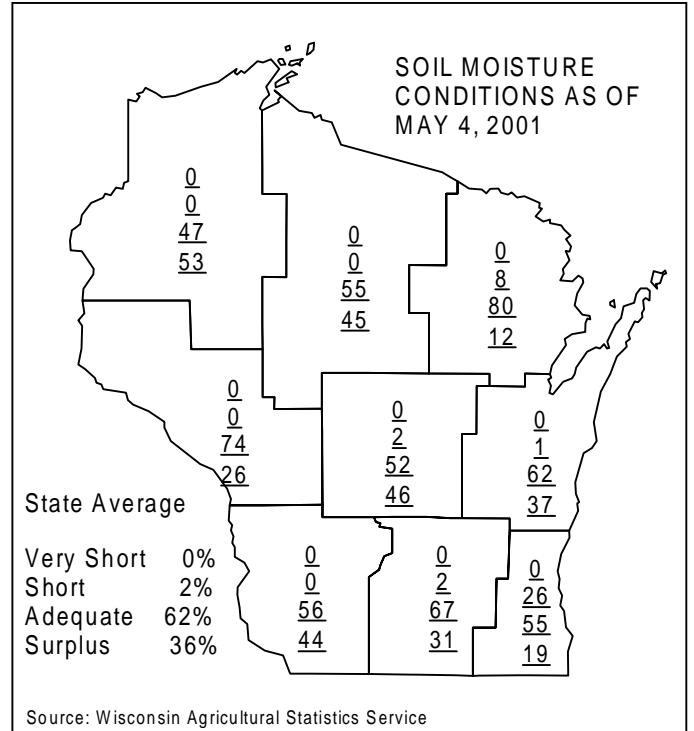
After several days of warm, sunny weather, farmers continued planting oats and corn in southern Wisconsin. Northern Wisconsin was experiencing cool, wet soil conditions, when last week's rain added to the problem. Last week the state wide average for field-work was 3.9 days suitable. Soil moisture was 2% short, 62% adequate, and 36% surplus.

**Corn** planting reached 29%, behind last years 56%, and the 5-year average of 33%. **Oat** planting reached 56% complete last week, well behind last years 96%, and the 5-year average of 76%. Oat emergence was reported 20% last week, below last years 56%, and the 5-year average of 33%. Southern Wisconsin farmers, with more favorable soil conditions, spent long hours planting corn and oats trying to catch up with previous years.

**Spring tillage** averaged 56% complete last week, behind last years 85%, and the 5-year average of 63%. Progress is hindered due to the continual cycle of dry and wet soil conditions throughout the state. Several northern Wisconsin locations reported soils too wet for tillage, even before the rains fell again last week.

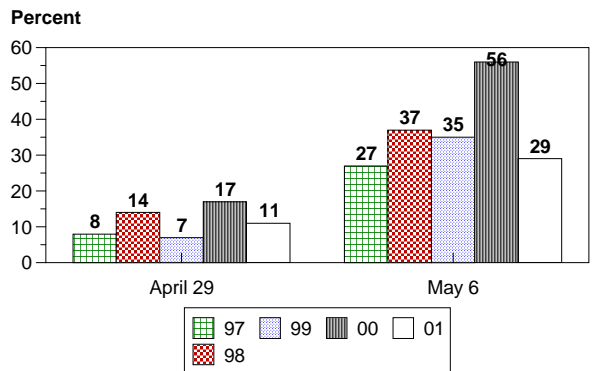
**Pasture** conditions improved greatly with the warm, sunny weather. **Alfalfa** and **winter wheat** continue to be reported in good condition, with the warm weather creating ideal growing conditions. If this weather cycle continues, late May will see first crop hay ready for harvest and spring planting not completed.

**Potato** planting is nearing completion in central Wisconsin. The **pea** crop has started to emerge.



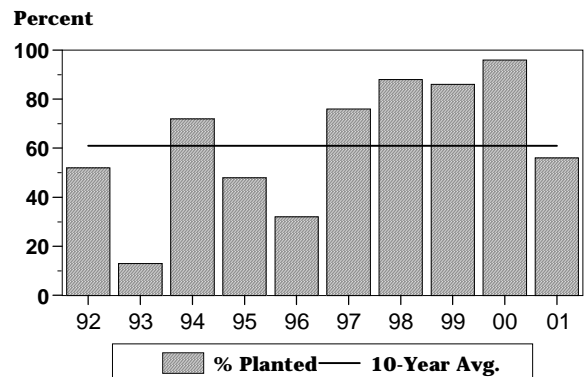
### PERCENTAGE OF CORN PLANTED

April 29, May 6, 1997-2001  
WISCONSIN



### STATE AVERAGE OATS PLANTED

May 6, 1992-2001



Wisconsin Crop Conditions as of May 4, 2001					
Item	V.-poor	Poor	Fair	Good	Excellent
Pasture	0	3	15	60	22

## Wisconsin Crop Progress, May 6, 2001

Crop and percent of acreage	District average									State average		
	NW	NC	NE	WC	C	EC	SW	SC	SE	This year	Last year	5-year average
Oats planted	32	28	49	34	52	65	78	92	89	56	96	76
Oats emerged	n.a.	n.a.	n.a.	12	17	19	39	37	59	20	56	33
Corn planted	17	10	21	10	19	25	40	49	36	29	56	33
Spring tillage	37	27	45	28	53	51	83	72	69	56	85	63

**Quotes from Farm Reporters and County Ag Agents**

**BARRON-C.P.:** Cool and wet soil conditions are holding back planting progress.

**CHIPPEWA-T.P.:** Rains have slowed fieldwork again. Alfalfa and clover look good.

**RUSK-G.P.:** Another slow week for fieldwork. Some oats and a small amount of corn in, but lots of fields haven't even been touched. Apple trees are budding now, and it looks like the flower buds came through the winter all right.

**LINCOLN-R.S.:** Apple trees are almost ready to blossom.

**ONEIDA-P.L.:** Some spring tillage and small grains are planted in between rain showers. The warm temperatures and the rain have kicked the grass pastures nicely. I have not seen any spuds planted yet, but they will be on it big time, if they can get in the fields this next week.

**PRICE-M.K.:** Following a brief spurt of tillage, more rain has again slowed fieldwork. Pastures and hayfields are really taking off quickly. Graziers' livestock should be on full grass within the next few days.

**SHAWANO-J.S.:** Most alfalfa seems to have survived winter very well. Corn planting now in full swing. Some farmers now finishing alfalfa seedings.

**BUFFALO-R.S.:** A lot of oats got planted in a few days. Too wet to do manure and fertilizer. First crop hay will be ready same time as planting corn and beans.

**JACKSON-J.W.:** Some farmers are knifing-in nitrogen. Not much corn planting yet. The nice, warm rains have given the alfalfa an early boost. Hay looks great.

**ST. CROIX-L.M.:** Alfalfa came through the winter in excellent condition. Tillage and planting have been almost non-existent due to rain. Some corn planted. It will be a late planting season for many. Everyone is waiting for a dry period of weather.

**ADAMS-D.G.:** Potatoes mostly planted, and peas are up. Corn is 20 percent planted, but have had rain the last 5 days.

**PORTAGE-T.C.:** Potato planting nearing completion. Corn planting has started. Wet weather is keeping many people out of the field on heavier soils. Work is continuing on sandy soils.

**WAUSHARA-L.K.:** Spring tillage is progressing quite rapidly. Peas and potatoes seem to be all planted. I saw one man planting corn with a 12-row planter on Sunday. Alfalfa being planted.

**CALUMET-S.K.:** Fieldwork progressing nicely. A good percentage of small grains planted and a good start on corn planting. Wheat and alfalfa looking great.

**FOND DU LAC-R.P.:** Pasture conditions improved greatly. Land tillage got off to a start with corn and oats being planted. Some land was still too wet to till when the heavy rains started Wednesday night.

**SHEBOYGAN-M.B.:** Peas, oats, and alfalfa have been seeded this past week, as well as a small percentage of corn acres. Farmers have not been able to get into fields with heavier soils yet. Heavy rain the past two days will keep us out of the field until sometime next week.

**GRANT-J.G.:** Continual rains are hampering further planting of corn.

**LAFAYETTE-L.W.:** Eighty-degree weather and strong winds resulted in rapid progress of fieldwork and planting. Some alfalfa is already knee-high.

**SAUK-D.H.:** Apples, pears, and cherries are blossoming. Hay looks good.

**COLUMBIA-R.S.:** Much corn being planted. Rain Wednesday night, and on and off through Friday, has stopped everything.


**DODGE-J.F.:** Beginning last Friday, corn planting began in earnest and continued through the weekend. A lot of corn went in the ground..

**GREEN-M.M.:** Spring planting is in full swing. Thousands of acres of corn have been planted in the past week. Many farmers are also starting to plant soybeans. Alfalfa looks good and is growing rapidly, due to warm weather.

**RACINE-L.F.:** Planting has been going full guns this past week. The fields are working up nicely, and everything looks so fresh. We need some rain.

**WASHINGTON-J.T.:** Alfalfa looks good. Corn planting started fast after rain, and ended when rain came.

**WAUKESHA-D.W.:** A lot of corn went into the ground through Wednesday. Had over 1.0 inches of rain Thursday.



Wisconsin Agricultural Statistics Service  
P.O. Box 8934  
Madison, WI 53708-8934  
(608) 224-4848  
<http://www.nass.usda.gov/wi/rlsetoc.htm>

**Robert J. Battaglia**  
State Statistician

**Angela Byers-Krantz**  
Statistician

This report has been made possible through the cooperative efforts of the U.S. Department of Agriculture, and the Wisconsin Department of Agriculture, Trade and Consumer Protection, and the National Weather Service.

**Wisconsin Weekly Weather, Selected Cities, Ending as of 7:00 a.m. on May 6, 2001**

City	Temperature						Growing degree days (modified base 50) 1/		Precipitation			
	Avg. max.	Avg. min.	High max.	Low min.	Avg.	Avg dep. from normal*	Mar. 1 to May 5	Mar. 1 to May 5 normal *	Last week	Since Mar. 1	Mar. 1 dep. from normal*	Year to date
Eau Claire	70	53	83	47	61	9	216	164	1.38	7.46	2.39	9.06
Green Bay	70	51	81	41	60	9	210	133	1.51	5.59	0.73	8.04
La Crosse	69	54	81	51	62	7	n.a.	n.a.	n.a.	6.52	1.27	8.70
Madison	73	54	81	47	63	11	271	199	0.92	4.57	-0.93	8.20
Milwaukee	70	51	82	41	61	11	222	n.a.	0.21	4.22	-2.47	8.81

1/Formula used: GDD = (daily maximum (86°) + daily minimum (50°))/2-50°; where 86° is used if the maximum exceeds 86° and 50° is used if the minimum falls below 50°. \*Normal based on 1961-90 data. Source: NCEP/NOAA Climate Prediction Center <<http://www.cpc.ncep.noaa.gov>>. N.a. = not available. T = trace.