

# Wisconsin CROP REVIEW

U. S. Department of Agriculture  
National Agricultural Statistics Service  
Wisconsin Field Office  
Nass-wi@nass.usda.gov  
1-800-789-9277

## June Stocks and Crop Acreage

Welcome to the  
*Wisconsin Crop Review!*

Let me begin by thanking all crop producers for their continued support and cooperation – especially the producers who provided data for the *NASS June Agriculture and June Area* surveys. Without their commitment and participation, this report would not be available. Nationwide, over 70,000 farms were contacted, and 11,000 land segments visited between May 28 and June 15 to produce these estimates.

This publication is a compilation of related reports issued by USDA's National Agricultural Statistics Service (NASS) in an effort to provide a complete source of relevant statistics.

Though many of the statistics in this publication can be accessed through our website ([www.nass.usda.gov/Publications](http://www.nass.usda.gov/Publications)), this Wisconsin Field Office summary will be issued following the release of the Quarterly USDA-NASS Crop reports.

I hope you find this information useful, and welcome any comments or questions you may have. I wish you a successful growing season!

Robert Battaglia  
Director  
Wisconsin Field Office

### 2011 Crop Plantings

**U.S. Corn** planted area for all purposes in 2011 is estimated at 92.3 million acres, up 5 percent from last year. Growers expect to harvest 84.9 million acres for grain, up 4 percent from last year.

**Wisconsin growers planted 4.15 million acres of corn**, 250,000 more than in 2010, and 100,000 more than farmers intended in March. Acres intended for grain are 3.28 million, up 180,000 from last year. Eighty-six percent of Wisconsin's corn was planted to a biotech variety.

**U.S. Soybean** planted area for 2011 is estimated at 75.2 million acres, down 3 percent from last year. Area for harvest, at 74.3 million acres, is also down 3 percent from 2010.

**Wisconsin's soybean acreage for 2011 is 1.66 million acres**, up 20,000 acres from last year. Wisconsin growers planted 60,000 more acres to soybeans than intended in March. Ninety-one percent of WI soybeans were herbicide resistant.

The 2011 **U.S. winter wheat** planted area, at 41.1 million acres, is 10 percent above last year. The U.S. wheat yield forecast is 45.3 bushels per acre, for production of 1.49 billion bushels.

**Wisconsin growers planted 330,000 acres of winter wheat.** Area for harvest is 315,000 acres. Winter wheat yield is forecast at 68 bushels per acre for Wisconsin.

#### Wisconsin oat planting totals

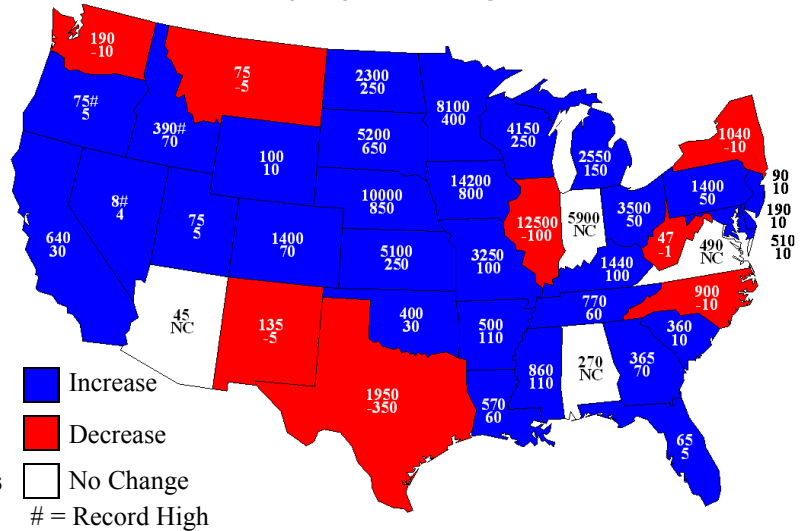
200,000 acres, down 110,000 acres from last year. Acres intended for oat harvest are 120,000. **Barley acres planted** in the state total 35,000, down 10,000 acres from last year. Twenty-five-thousand acres of barley are intended to be harvested as grain.

**Alfalfa hay** for dry hay in Wisconsin at 1.15 million acres is down 150,000 acres from last year. Nationally alfalfa hay acres are forecast at 19.3 million acres, down 3.1 percent from last year.

Wisconsin's acres of **other hay for dry hay** are 350,000 acres, down 10,000 from 2010. Nationally, other hay acres are down 4.1 percent to 38.3 million acres.

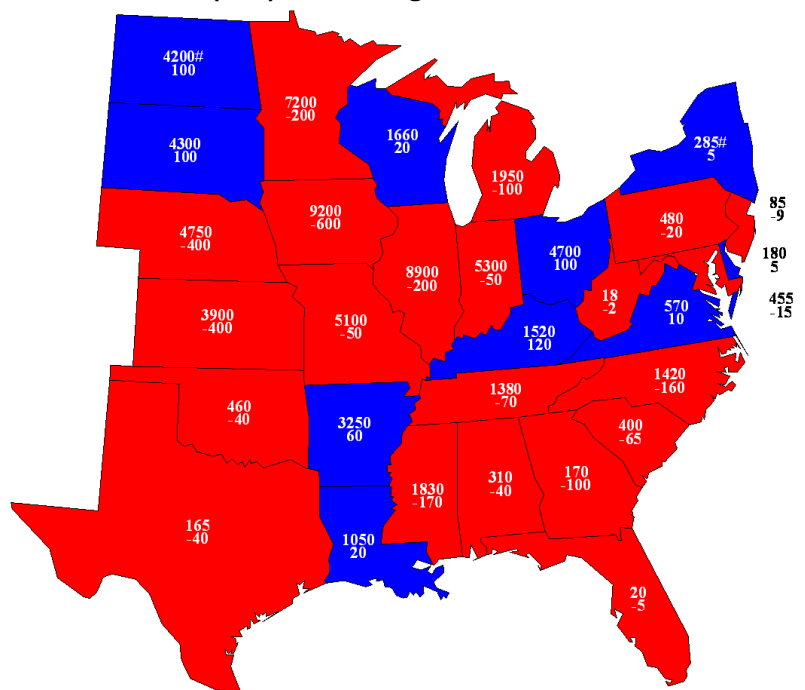
### 2011 Corn Planted

Acres (000) and Change from Previous Year



### 2011 Soybeans Planted

Acres (000) and Change from Previous Year



# Wisconsin

## CROP REVIEW



**Acres planted to principal crops in Wisconsin rose 79,000 acres from 2010, but is 217,000 acres lower than 2009.**

**U. S. Principal crop acres were up 1 percent this year, but were down 103,000 acres from 2009.**

**U.S. corn acreage is the second highest planted since 1944, and behind only the 93.5 million acres planted in 2007**

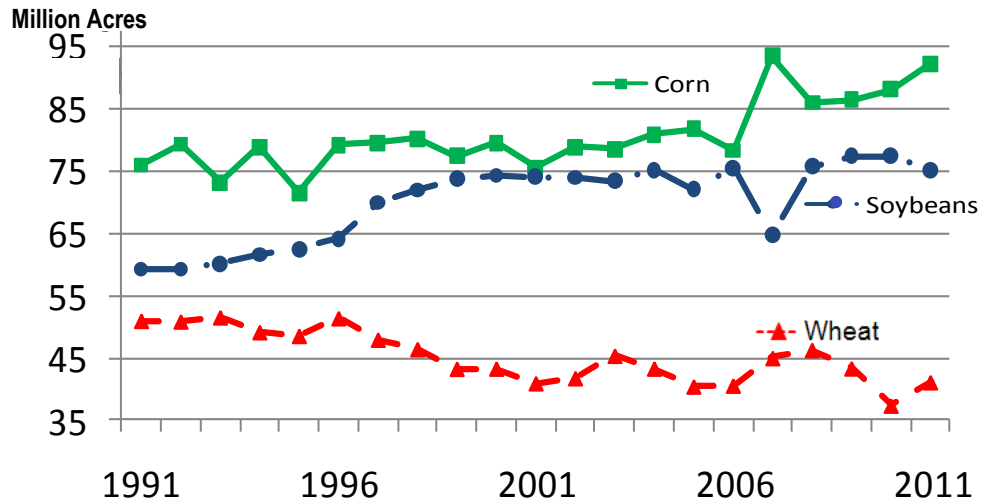
**Five states, including Illinois, Ohio, North Dakota, South Dakota, and Texas planted 200,000-300,000 fewer corn acres than intended in March due to poor planting conditions.**

### 2011 Crop Acreage, Wisconsin and United States

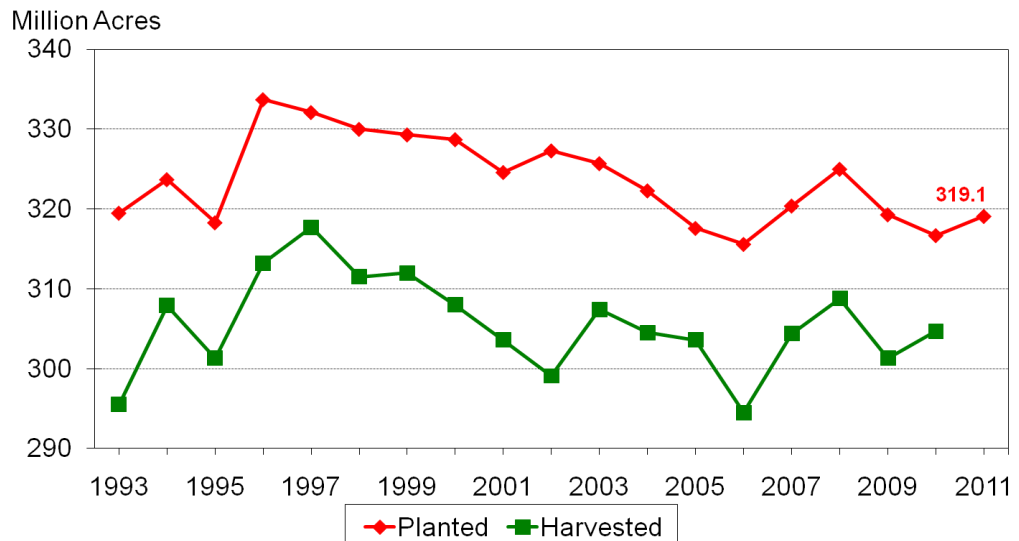
Crop	Wisconsin				United States			
	Planted		Harvested		Planted		Harvested	
	2010	2011	2010	2011	2010	2011	2010	2011
	Thousand Acres							
Corn, all purposes	3,900	4,150	3,100	3,280	88,192	92,282	81,446	84,888
Soybeans	1,640	1,660	1,630	1,650	77,404	75,208	76,616	74,258
Oats	310	200	170	120	3,138	2,587	1,263	934
Barley	45	35	30	25	2,872	2,815	2,465	2,480
Winter wheat	240	330	230	315	37,335	41,108	31,749	32,307
Hay, all dry <sup>1</sup>	-	-	1,660	1,500	-	-	59,862	57,605
Dry edible beans	6.2	5.5	6.2	5.5	1,911	1,258	1,843	1,207
<b>Acres planted to 21 Principal Crops<sup>2</sup></b>	<b>7,864</b>	<b>7,943</b>	<b>-</b>	<b>-</b>	<b>316,694</b>	<b>319,147</b>	<b>-</b>	<b>-</b>

<sup>1</sup> Harvested acres <sup>2</sup> Includes planted corn, sorghum, oats, barley, winter wheat, rye, Durum wheat, other spring wheat, rice, soybeans, peanuts, sunflower, cotton, dry edible beans, potatoes, sugarbeets, canola, and proso millet acres, plus harvested all hay, tobacco, and sugarcane acres.

### U.S. Corn, Soybean, and Winter Wheat Planted Acreage



### U.S. Principal Crop Acres



# June Stocks and Crop Acreage

## United States and Wisconsin Grain Stocks

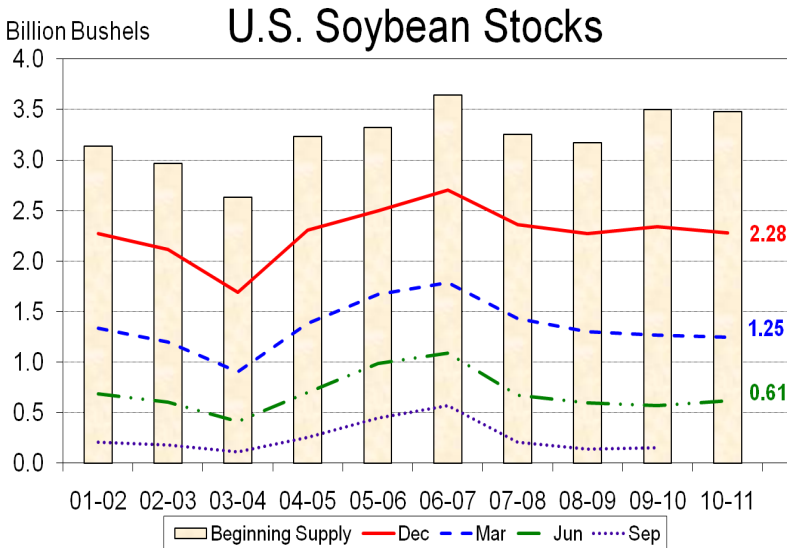
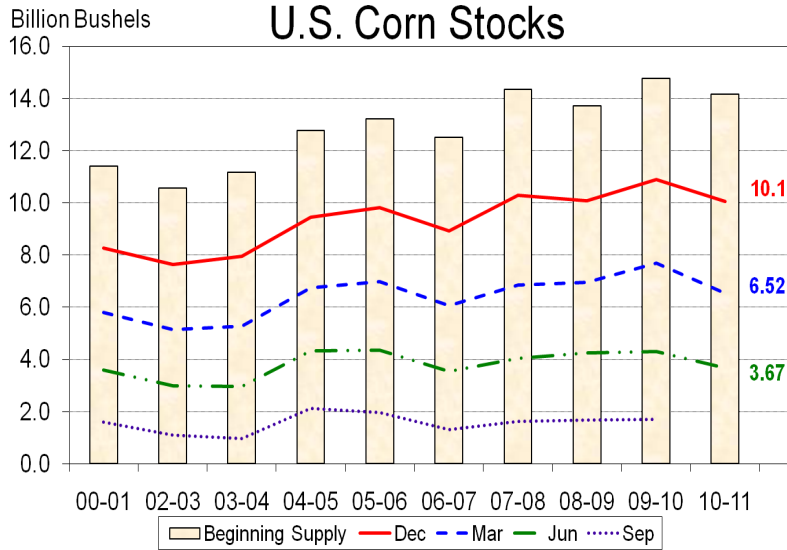
**U.S. Corn stocks** totaled 3.67 billion bushels, down 15 percent from last year. March-May 2011 disappearance was 2.85 billion bushels. Of the total stocks, 1.68 billion was stored on farms, down 21 percent from a year earlier. Off-farm stocks at 1.99 billion bushels, were down 9 percent from a year ago.

**U.S. soybean stocks** were 619 million bushels, up 8 percent from 2010. The March-May 2011 disappearance was 630 million bushels, down 10 percent from a year ago. On-farm stocks totaled 218 million bushels, down 6 percent from a year ago. Off-farm stocks, at 401 million bushels, were up 19 percent from a year ago.

**All wheat stocks** in the U.S. were 861 million bushels, down 12 percent from 2010. March-May 2011 disappearance was 565 million bushels, up 48 percent from a year earlier. On-farm stocks were estimated at 131 million bushels, down 38 percent from last year. Off-farm stocks, at 730 million bushels, were down 5 percent from a year ago.

**Wisconsin Corn stocks** were 169.5 million bushels, down 2 percent from June 2010. Corn stored on farms totaled 90.0 million bushels, and 79.5 million were off-farm.

**Wisconsin soybean stocks** totaled 17.9 million bushels, down 6 percent from June of last year. On-farm storage was 4.1 million bushels, and 13.8 million bushels were in off-farm storage.



**Wisconsin corn stocks** were 169.5 million bushels on June 1, down 2 percent from last year.

**Wisconsin's soybean stocks** were 17.9 million bushels, 6 percent lower than 2010.

**U.S. oat acreage** is the lowest area on record for planting and harvest. No states increased plantings, and 21 of 31 states have a record low.

**U. S. barely planted acreage** was also the lowest on record.

**Record low hay acres** for harvest are expected this year in 7 states including Wisconsin.

## Wisconsin Crop Values and Monthly Prices Received by Farmers

	Wisconsin Market Year Average Price			Wisconsin Value of Production			Recent 2011 Wisconsin Monthly Prices <sup>1</sup>			
	2008	2009	2010	2008	2009	2010	Mar	Apr	May	Jun
	Dollars per bushel (ton for hay)			1,000 dollars			Dollars per bushel (ton for hay)			
<b>Corn</b>	3.89	3.57	5.35	1,534,838	1,600,395	2,686,770	5.62	6.26	6.46	6.60
<b>Soybeans</b>	9.80	9.62	11.40	545,370	623,376	938,391	12.00	12.40	12.60	12.80
<b>Oats</b>	2.82	1.84	2.30	33,220	24,398	22,678	3.18	3.59	3.35	3.25
<b>Barley, all</b>	3.57	2.78	2.45	5,783	4,101	3,528	4.29	4.41	4.15	5.11
<b>Winter Wheat</b>	5.43	4.12	5.30	120,057	88,250	78,016	7.02	7.37	7.80	7.35
<b>Alfalfa Hay</b>	113.00	106.00	107.00	457,650	410,750	403,390	100.00	100.00	100.00	100.00
<b>Other Hay</b>	79.00	80.00	76.50	60,040	44,400	57,834	75.00	75.00	75.00	75.00

<sup>1</sup> Barley and Winter Wheat monthly prices are a national average.



# June Stocks and Crop Acreage

# Wisconsin

*TO WISCONSIN CROP PRODUCERS* -This report contains a summary of information collected from you for the June Agricultural Surveys. Thank you for your support and representation of Wisconsin agriculture. We appreciate your assistance in providing timely and accurate data.

~Robert Battaglia, Director USDA-NASS Wisconsin Field Office

## INFORMATION IS POWER

The complete June Crop Acreage and Grain Stock reports can be found at the USDA NASS national publication website: [www.nass.usda.gov/results](http://www.nass.usda.gov/results)

### Other National Reports & Their Release Dates:

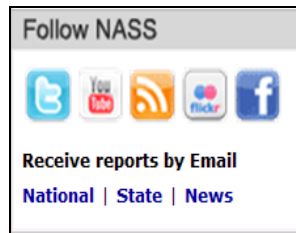
Jul 12, Aug 11, Sep 12 -Crop Production	Jul 29, Aug 31, Sep 29 —Agricultural Prices
Jul 22—Cattle	Jul 19, Aug 18, Sep 19—Milk Production
Aug 16—Cranberries	Sep 22—Potatoes      Sep 28—Hogs & Pigs
Aug 18 —Farm Labor	<b>Sep 30—Small Grains Summary; Grain Stocks</b>

Additional Wisconsin-specific information that can be found on our state website

[www.nass.usda.gov/wi](http://www.nass.usda.gov/wi) includes:

- Wisconsin Annual Statistics Bulletin
- Crop Progress and Condition
- Custom Rate Guide
- Cropland Data Layer
- Organic Production Survey
- Land Sales

**For the most timely information, subscribe to electronic delivery of our new reports. Look for the box shown to the right to get started!**



USDA-NASS  
WISCONSIN FIELD  
OFFICE



PHONE: 800-789-9277

FAX: 800-838-6277

E-MAIL: [NASS-WI@NASS.USDA.GOV](mailto:NASS-WI@NASS.USDA.GOV)

Robert Battaglia, Director  
Greg Bussler, Deputy Director

USDA-National Agricultural Statistics Service  
Wisconsin Field Office  
PO Box 8934  
Madison, WI 53708-8934

OFFICIAL BUSINESS

PRSR STD  
POSTAGE & FEES PAID  
USDA  
PERMIT NO. G-38