



# 2002 North Dakota Wheat Varieties

July 23, 2002

## Highlights

The leading 2002 North Dakota spring wheat varieties were Alsen, Gunner, Reeder, Parshall, and Oxen. Of the 7.0 million acres of spring wheat planted in North Dakota, the top five varieties accounted for 64.0 percent of the total. Russ, the 2001 leader, fell to seventh in 2002. Oxen and Ingot remained strong in the east central district.

The durum wheat variety Ben maintained its first place position for the fourth straight year and Lebsock moved into second place from eighth in 2001. Mountrail climbed into third place in 2002. Together the top three varieties accounted for 55.8 percent of the 2.0 million of durum acres planted in 2002. Renville dropped from second place in 2001 to sixth place in 2002. Munich slipped from third to seventh place.

Some of the winter wheat varieties reported planted in North Dakota include Elkhorn, Harding, Ransom, Roughrider and Wesley. Winter wheat variety estimates are not published due to insufficient number of winter wheat variety reports in 2002.

## Survey Description

The data in this report is based on the results of a June survey conducted by USDA's North Dakota Agricultural Statistics Service of over 1,900 wheat producers. Thank you to each person who supplied data and made this report possible.

Results include acreage and percentages at the state and Agricultural Statistics district levels. All variety data and planted district acreage in this publication are not official estimates. The number of summarized reports produce highly reliable state totals. At the district level, the number of reports for minor varieties is generally limited, hence some of the yearly variation in the district percent and acreage may be the result of sample variation.

The North Dakota Wheat Commission and the North Dakota State University (NDSU) Agriculture Experiment Station provided supporting funds for this survey. The NDSU Extension Service provided variety descriptions. Free copies of the publication are available from the North Dakota Wheat Commission, 4023 State Street, Bismarck, ND 58503-0690; telephone 701-328-5111.

## SPRING WHEAT

**Alsen** was the most popular spring wheat variety this year. It accounted for 30.8 percent of the spring wheat acres or 2.2 million acres. This compared to 6.7 percent last year when it was in sixth place. Alsen was most popular in the northern two-thirds of the state. Alsen, a 2000 North Dakota release, has semi-dwarf height, strong straw strength, medium-early maturity rate, high tolerance to fusarium headblight and an average to good end-use quality rating.

**Gunner**, a 1995 Agri Pro release, maintained its second place position in 2002. Gunner accounted for 9.1 percent of the spring wheat acres, compared to 16.1 percent in 2001. It was the second leading variety in northwest, north central, northeast and central districts. Gunner has medium height, medium-strong straw strength, medium maturity and an average to good end-use quality rating.

**Reeder** was the third most popular spring wheat variety, up from eighth place last year. It accounted for 8.6 percent of the spring wheat acres statewide, compared to 4.3 percent last year. Reeder was the leading variety in the southwest and south central districts. Reeder, a 1999 North Dakota release, has semi-dwarf height, strong straw strength, medium-early maturity rate and an average to good end-use quality rating.

**Parshall** moved up to fourth place in 2002 from fifth in 2001, accounting for 7.9 percent of the spring wheat planted acreage. It is a 1999 North Dakota release that has medium height, strong straw strength, medium maturity and a good end-use quality rating.

Variety	SPRING WHEAT <sup>1/</sup>					
	Percent of Acreage Planted, North Dakota, 1998-2002					
	1998	1999	2000	2001	2002	
				Pct.	Acres Planted	
	----- Percent -----				- 1,000 -	
Alsen	0.0	0.0	0.4	6.7	30.8	2,158.2
Gunner	0.8	6.5	14.9	16.1	9.1	635.6
Reeder	0.0	0.0	0.6	4.3	8.6	602.8
Parshall	0.0	0.0	0.8	6.7	7.9	552.9
Oxen	2.3	6.3	9.6	8.2	7.6	529.3
Ingot	0.0	0.2	1.9	5.6	6.7	470.9
Russ	8.3	15.1	20.3	18.2	6.0	421.8
2375	35.9	26.0	13.5	6.8	3.4	239.3
Norpro	0.0	0.0	0.0	0.4	3.1	214.3
Amidon	5.3	6.2	4.9	3.9	1.8	122.9
Grandin	7.8	5.7	5.8	2.6	1.6	114.3
Butte 86	5.6	3.8	2.2	1.2	1.1	73.9
McKenzie	0.0	0.0	0.3	1.0	1.0	70.7
Keene	0.2	2.1	2.7	2.4	1.0	69.7
Dandy	0.0	0.0	0.5	1.5	1.0	68.1
Trenton	1.7	2.3	1.5	1.9	0.9	66.0
2398	2.8	4.3	3.1	2.0	0.8	54.5
McNeal	1.0	1.3	0.8	0.9	0.7	47.2
Mercury	0.0	0.0	0.0	0.0	0.6	44.1
Forge	0.2	0.9	1.6	0.7	0.5	34.9
Walworth	0.0	0.0	0.0	0.0	0.5	33.6
HJ98	0.0	0.2	1.9	1.4	0.5	32.7
Coteau	0.7	0.6	0.4	0.3	0.5	32.1
Len	0.9	0.8	0.4	0.3	0.4	27.9
Ivan	0.0	0.0	0.4	0.2	0.4	27.7
Gus	1.3	0.8	0.9	1.5	0.4	27.1
Other <sup>2/</sup>	25.2	16.9	10.6	5.2	3.3	227.5
All Varieties	100.0	100.0	100.0	100.0	100.0	7,000.0

<sup>1/</sup> Percentages may not add to 100 due to rounding. <sup>2/</sup> Other includes other varieties not listed and unknown varieties.

~ Compiled and Published by ~

N.D. Agricultural Statistics Service, USDA • P.O. Box 3166, Fargo, ND 58108-3166 • 701-239-5306

Internet: <http://www.nass.usda.gov/nd/> • To access NASS reports - <http://www.usda.gov/nass/>

**SPRING WHEAT (Continued)**

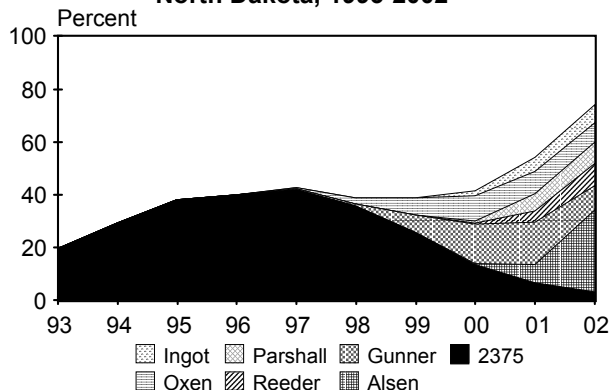
**SPRING WHEAT<sup>1/</sup>  
Percent and Acreage Planted, North Dakota, 2002**

Variety	Northwest	North Central	Northeast	West Central	Central	East Central	Southwest	South Central	Southeast	State
	----- Percent Planted -----									
Alsen	51.1	52.7	52.6	18.1	30.2	24.5	4.9	4.3	13.3	30.8
Gunner	14.8	20.5	11.0	12.0	13.2	2.0	4.2	5.2	0.2	9.1
Reeder	3.6	1.5	2.6	11.2	10.3	0.6	34.6	16.9	6.0	8.6
Parshall	4.0	5.1	7.2	13.0	11.6	5.3	9.5	10.4	7.9	7.9
Oxen	0.0	0.0	1.2	0.6	2.4	20.1	6.9	12.1	25.4	7.6
Ingot	0.0	0.0	6.0	0.1	5.2	23.8	0.0	0.0	16.5	6.7
Russ	8.3	9.3	4.6	0.0	11.9	4.3	0.4	6.3	10.5	6.0
2375	0.6	1.2	2.2	3.6	0.5	7.1	8.1	6.8	0.8	3.4
Norpro	0.4	3.2	2.0	0.2	7.9	3.9	3.7	3.7	2.8	3.1
Amidon	3.5	2.2	0.0	7.4	0.1	0.8	1.0	4.3	0.5	1.8
Grandin	2.5	0.9	0.7	5.4	0.9	0.0	2.6	4.5	0.2	1.6
Butte 86	0.0	0.0	0.0	0.0	0.8	0.1	2.2	6.4	2.3	1.1
McKenzie	2.7	0.7	0.0	1.2	0.8	0.4	1.3	1.4	2.0	1.0
Keene	3.1	0.0	0.0	0.2	0.0	0.0	4.3	1.6	1.0	1.0
Dandy	0.3	0.4	2.0	0.5	0.6	0.1	0.0	0.0	3.8	1.0
Trenton	0.0	0.0	0.0	5.4	0.0	0.0	1.8	0.7	2.7	0.9
2398	0.0	0.0	0.0	3.3	0.0	0.0	0.9	5.6	0.0	0.8
McNeal	1.1	0.0	0.0	7.1	0.0	0.0	0.0	0.0	0.0	0.7
Mercury	0.0	0.0	1.6	0.1	0.0	1.0	1.3	0.1	0.1	0.6
Forge	0.0	0.0	0.3	0.0	0.1	1.0	2.7	0.0	0.0	0.5
Walworth	0.0	0.0	0.8	0.8	0.2	0.9	0.0	0.1	0.9	0.5
HJ98	0.0	0.6	1.9	0.0	0.0	0.1	0.0	0.0	0.0	0.5
Coteau	0.0	0.0	0.0	3.8	0.0	0.0	0.6	0.6	0.3	0.5
Len	0.0	0.4	0.0	1.8	0.0	0.0	0.8	1.6	0.0	0.4
Ivan	0.0	0.1	0.6	0.2	0.9	0.7	0.0	0.0	0.5	0.4
Gus	1.4	0.4	0.1	0.0	0.4	0.0	0.1	1.6	0.1	0.4
Other <sup>2/</sup>	2.6	0.7	2.3	3.8	1.9	3.4	7.9	5.9	2.2	3.3
	----- 1,000 Acres -----									
Alsen	347.6	353.4	751.6	101.5	214.5	235.1	36.2	22.8	95.5	2,158.2
Gunner	100.9	137.3	157.8	67.0	93.7	18.8	31.2	27.3	1.6	635.6
Reeder	24.2	10.2	37.7	62.6	73.4	5.8	256.2	89.5	43.2	602.8
Parshall	27.3	34.2	103.6	72.8	82.4	50.8	70.0	55.0	56.8	552.9
Oxen	0.0	0.0	17.2	3.4	17.3	193.0	51.1	64.2	183.1	529.3
Ingot	0.0	0.0	85.8	0.6	36.8	228.9	0.0	0.0	118.8	470.9
Russ	56.7	62.2	65.3	0.0	84.7	41.1	2.9	33.3	75.6	421.8
2375	4.2	8.3	32.1	20.4	3.9	68.3	59.9	36.1	6.1	239.3
Norpro	2.6	21.3	28.9	1.0	56.0	37.5	27.4	19.8	19.8	214.3
Amidon	23.9	14.7	0.0	41.6	0.6	7.6	7.7	22.9	3.9	122.9
Grandin	16.8	6.2	9.9	30.4	6.6	0.0	19.6	23.6	1.2	114.3
Butte 86	0.0	0.0	0.0	0.0	5.7	1.4	16.6	33.8	16.4	73.9
McKenzie	18.3	5.0	0.0	6.9	5.4	3.4	9.7	7.4	14.6	70.7
Keene	20.9	0.0	0.0	1.3	0.0	0.0	31.7	8.3	7.5	69.7
Dandy	1.8	2.5	29.0	2.9	4.2	0.7	0.0	0.0	27.0	68.1
Trenton	0.0	0.0	0.0	30.2	0.0	0.0	13.1	3.6	19.1	66.0
2398	0.0	0.0	0.0	18.2	0.0	0.0	6.7	29.6	0.0	54.5
McNeal	7.3	0.0	0.0	39.9	0.0	0.0	0.0	0.0	0.0	47.2
Mercury	0.0	0.0	23.4	0.3	0.0	9.4	9.6	0.6	0.8	44.1
Forge	0.0	0.0	4.5	0.0	1.0	9.2	20.2	0.0	0.0	34.9
Walworth	0.0	0.0	11.7	4.6	1.5	8.4	0.0	0.6	6.8	33.6
HJ98	0.0	3.7	27.8	0.0	0.0	1.2	0.0	0.0	0.0	32.7
Coteau	0.0	0.0	0.6	21.4	0.0	0.0	4.8	3.3	2.0	32.1
Len	0.0	3.0	0.0	10.2	0.0	0.0	6.2	8.5	0.0	27.9
Ivan	0.0	0.7	8.7	1.3	6.3	6.9	0.0	0.0	3.8	27.7
Gus	9.8	2.9	1.8	0.0	2.5	0.0	1.0	8.4	0.7	27.1
Other <sup>2/</sup>	17.7	4.4	32.6	21.5	13.5	32.5	58.2	31.4	15.7	227.5
All Varieties	680.0	670.0	1,430.0	560.0	710.0	960.0	740.0	530.0	720.0	7,000.0

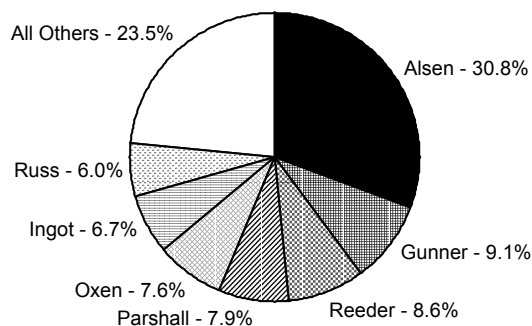
<sup>1/</sup> Percentages may not add to 100 due to rounding. <sup>2/</sup> Other includes other varieties not listed and unknown varieties.

## SPRING WHEAT (Continued)

**Spring Wheat  
Leading Varieties Planted  
North Dakota, 1993-2002**



**Spring Wheat Varieties  
Percent of Total Planted  
North Dakota, 2002**



## DURUM WHEAT

**Ben** was the most popular North Dakota durum wheat variety for the fourth year in a row. It accounted for 26.0 percent of the 2.0 million durum acres planted, down from 27.5 percent in 2001. It has broad appeal statewide and was the leading variety in the southern two-thirds of the state. Ben is a 1996 North Dakota release and is characterized by medium height, strong straw strength, medium maturity and excellent end-use quality.

**Lebsock** moved up to second place in 2002 from eighth. It represented 15.8 percent of the durum acres planted, compared to 3.2 percent in 2001. It was the leading variety in the north central and the northeast district. Lebsock is known for its medium height, strong straw strength, medium maturity and good end-use quality. It is a 1999 North Dakota release.

**Mountrail** moved into third place in 2002 from fourth. It comprised 14.0 percent of the acres of durum planted this year, up from the 7.9 percent of last year's acreage. It was released in 1998 by North Dakota and is known for medium height, strong straw strength, late maturity and average end-use quality.

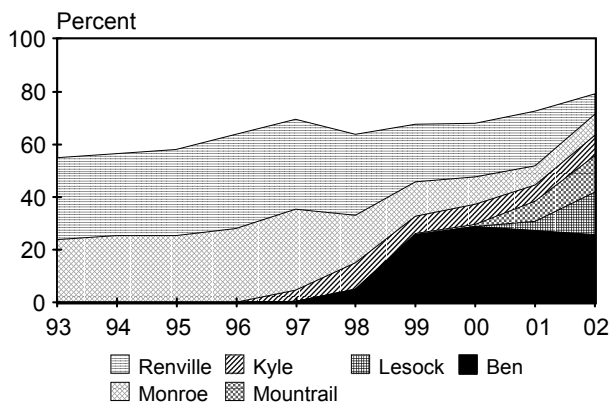
**Kyle** rose from seventh to fourth place this year with 7.8 percent of the planted durum acreage, up from 6.2 percent in 2001. It was grown mainly in the northwest district. Kyle is a Canadian 1984 release and is described as having tall height, weak straw strength, late maturity and good end-use quality.

**DURUM WHEAT<sup>1/</sup>  
Percent of Acreage Planted, North Dakota, 1998-2002**

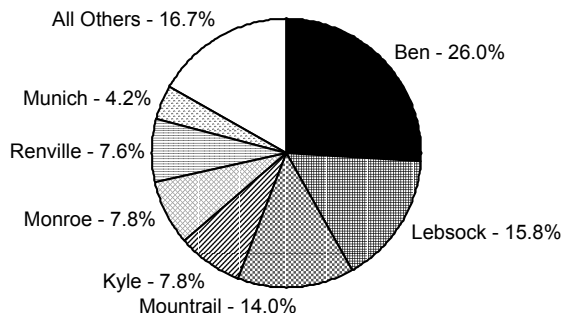
Variety	1998	1999	2000	2001	2002	
					Pct.	Acres Planted
Ben	5.0	26.0	29.0	27.5	26.0	520.3
Lebsock	0.0	0.0	0.1	3.2	15.8	315.0
Mountrail	0.0	0.4	0.7	7.9	14.0	280.2
Kyle	10.1	6.5	7.5	6.2	7.8	156.9
Monroe	18.1	12.7	10.3	7.3	7.8	156.2
Renville	30.5	22.1	20.3	20.6	7.6	152.5
Munich	7.2	10.1	12.7	8.0	4.2	84.6
Maier	0.0	0.1	0.6	3.0	3.2	64.5
Vic	5.5	2.5	2.7	2.2	2.5	49.9
AC Avonlea	0.0	0.0	0.0	0.0	1.9	38.4
Plaza	0.0	0.0	0.0	0.0	1.6	32.6
Rugby	10.2	12.9	8.9	6.5	1.4	28.3
Belzer	0.1	0.6	1.2	0.4	1.0	20.3
Plenty	4.8	2.2	1.4	1.0	0.9	17.1
Voss	0.1	0.4	0.3	0.3	0.8	15.3
Crosby	0.3	0.1	0.1	1.0	0.7	13.1
Other <sup>2/</sup>	8.1	3.4	4.2	4.9	2.7	54.8
All Varieties	100.0	100.0	100.0	100.0	100.0	2,000.0

<sup>1/</sup> Percentages may not add to 100 due to rounding. <sup>2/</sup> Other includes other varieties not listed and unknown varieties.

**Durum Wheat  
Leading Varieties Planted  
North Dakota, 1993-2002**



**Durum Wheat Varieties  
Percent of Total Planted  
North Dakota, 2002**



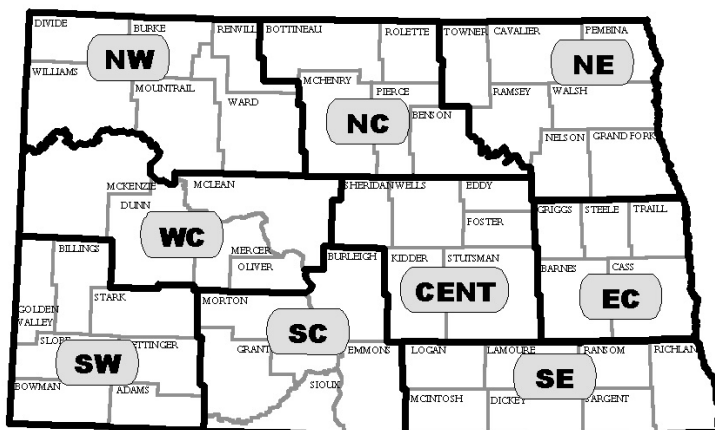
**DURUM WHEAT (Continued)**

**DURUM WHEAT<sup>1/</sup>  
Percent and Acreage Planted, North Dakota, 2002**

Variety	Northwest	North Central	Northeast	West Central	Central	East Central	Southwest	South Central	Southeast	State
----- Percent Planted -----										
Ben	11.6	20.3	4.7	38.5	45.1	26.0	66.4	44.5	64.0	26.0
Lebsock	12.5	39.8	37.9	10.5	32.0	15.3	9.3	38.5	0.0	15.8
Mountrail	20.3	2.0	7.2	17.6	0.0	14.0	1.3	0.0	0.0	14.0
Kyle	14.5	1.4	0.0	0.5	0.0	0.0	0.1	0.0	0.0	7.8
Monroe	10.0	4.8	3.0	13.1	0.0	0.0	0.0	9.5	0.0	7.8
Renville	11.0	7.2	0.6	8.5	6.3	0.0	0.7	0.0	0.0	7.6
Munich	2.0	10.9	37.0	0.0	4.9	0.0	0.5	0.0	36.0	4.2
Maier	2.6	0.5	0.0	2.3	0.0	0.0	9.5	0.0	0.0	3.2
Vic	4.7	0.0	0.0	0.0	0.0	0.0	0.0	0.0	0.0	2.5
AC Avonlea	3.5	0.0	0.0	0.5	0.0	0.0	0.0	0.0	0.0	1.9
Plaza	1.5	0.6	0.0	5.7	0.0	0.0	0.0	0.0	0.0	1.6
Rugby	0.0	11.5	9.7	0.0	11.7	0.0	0.0	0.0	0.0	1.4
Belzer	1.9	0.0	0.0	0.0	0.0	0.0	0.0	0.0	0.0	1.0
Plenty	0.7	0.0	0.0	0.0	0.0	0.0	2.9	1.3	0.0	0.9
Voss	0.3	0.0	0.0	0.5	0.0	0.0	3.5	0.0	0.0	0.8
Crosby	0.9	0.0	0.0	0.2	0.0	0.0	0.0	6.2	0.0	0.7
Other <sup>2/</sup>	2.1	1.1	0.0	2.1	0.0	44.7	5.8	0.0	0.0	2.7
----- 1,000 Acres -----										
Ben	123.4	22.3	5.6	106.0	15.8	3.9	212.4	24.5	6.4	520.3
Lebsock	132.2	43.8	45.5	28.9	11.2	2.3	29.9	21.2	0.0	315.0
Mountrail	214.9	2.2	8.6	48.4	0.0	2.1	4.0	0.0	0.0	280.2
Kyle	153.7	1.5	0.0	1.3	0.0	0.0	0.4	0.0	0.0	156.9
Monroe	106.2	5.3	3.6	35.9	0.0	0.0	0.0	5.2	0.0	156.2
Renville	116.1	7.9	0.7	23.3	2.2	0.0	2.3	0.0	0.0	152.5
Munich	21.2	12.0	44.4	0.0	1.7	0.0	1.7	0.0	3.6	84.6
Maier	27.5	0.5	0.0	6.2	0.0	0.0	30.3	0.0	0.0	64.5
Vic	49.9	0.0	0.0	0.0	0.0	0.0	0.0	0.0	0.0	49.9
AC Avonlea	37.0	0.0	0.0	1.4	0.0	0.0	0.0	0.0	0.0	38.4
Plaza	16.3	0.7	0.0	15.6	0.0	0.0	0.0	0.0	0.0	32.6
Rugby	0.0	12.6	11.6	0.0	4.1	0.0	0.0	0.0	0.0	28.3
Belzer	20.3	0.0	0.0	0.0	0.0	0.0	0.0	0.0	0.0	20.3
Plenty	7.2	0.0	0.0	0.0	0.0	0.0	9.2	0.7	0.0	17.1
Voss	2.7	0.0	0.0	1.5	0.0	0.0	11.1	0.0	0.0	15.3
Crosby	9.1	0.0	0.0	0.6	0.0	0.0	0.0	3.4	0.0	13.1
Other <sup>2/</sup>	22.3	1.2	0.0	5.9	0.0	6.7	18.7	0.0	0.0	54.8
All Varieties	1,060.0	110.0	120.0	275.0	35.0	15.0	320.0	55.0	10.0	2,000.0

<sup>1/</sup> Percentages may not add to 100 due to rounding. <sup>2/</sup> Other includes other varieties not listed and unknown varieties.

**North Dakota  
Agricultural Statistics Districts**



2001 SPRING WHEAT REVISED

SPRING WHEAT<sup>1/</sup>, Percent of Acreage Planted, North Dakota, 1997-2001

Variety	1997	1998	1999	2000	2001		Variety	1997	1998	1999	2000	2001	
					Pct.	Acres Planted						Pct.	Acres Planted
	Percent				- 1,000 -			Percent				- 1,000 -	
Russ	4.5	8.3	15.1	20.3	18.2	1,289.7	HJ98	0.0	0.0	0.2	1.9	1.4	99.5
Gunner	0.1	0.8	6.5	14.9	16.1	1,143.8	Butte 86	7.6	5.6	3.8	2.2	1.2	83.9
Oxen	0.4	2.3	6.3	9.6	8.2	583.7	McKenzie	0.0	0.0	0.0	0.3	1.0	67.7
2375	42.1	35.9	26.0	13.5	6.8	480.1	McNeal	0.7	1.0	1.3	0.8	0.9	64.9
Parshall	0.0	0.0	0.0	0.8	6.7	473.5	2371	2.3	2.7	1.0	0.6	0.8	59.2
Alsen	0.0	0.0	0.0	0.4	6.7	473.4	Forge	0.0	0.2	0.9	1.6	0.7	50.1
Ingot	0.0	0.0	0.2	1.9	5.6	394.9	Ernest	1.3	1.3	1.4	0.8	0.7	51.1
Reeder	0.0	0.0	0.0	0.6	4.3	303.1	Norpro	0.0	0.0	0.0	0.0	0.4	31.1
Amidon	7.2	5.3	6.2	4.9	3.9	274.3	Kulm	2.7	2.0	2.2	0.9	0.4	27.6
Grandin	9.3	7.8	5.7	5.8	2.6	186.3	Lars	0.0	0.4	0.4	0.4	0.3	21.7
Keene	0.0	0.2	2.1	2.7	2.4	169.4	Stoa	1.2	1.2	0.7	0.5	0.3	21.0
2398	1.2	2.8	4.3	3.1	2.0	143.3	Len	1.0	0.9	0.8	0.4	0.3	19.5
Trenton	0.2	1.7	2.3	1.5	1.9	132.1	Other <sup>2/</sup>	15.4	18.3	11.8	8.2	3.5	245.2
Dandy	0.0	0.0	0.0	0.5	1.5	105.0	All Varieties	100.0	100.0	100.0	100.0	100.0	7,100.0
Gus	2.8	1.3	0.8	0.9	1.5	104.9							

SPRING WHEAT<sup>1/</sup>, Percent and Acreage Planted, North Dakota, 2001

Variety	Northwest	North Central	Northeast	West Central	Central	East Central	Southwest	South Central	Southeast	State
	Percent Planted									
Russ	6.7	22.5	16.2	5.1	53.9	13.7	2.9	11.3	29.2	18.2
Gunner	17.0	32.4	32.5	13.5	14.4	7.8	8.0	5.0	0.6	16.1
Oxen	0.0	0.2	1.6	3.1	1.8	15.6	3.1	19.6	34.0	8.2
2375	3.2	5.7	3.1	5.4	1.7	16.4	9.2	14.4	3.2	6.8
Parshall	17.5	3.3	6.0	5.9	4.8	6.6	8.1	2.3	6.3	6.7
Alsen	6.8	13.2	14.2	2.8	3.9	6.4	0.5	0.8	3.6	6.7
Ingot	1.5	0.6	5.7	0.0	1.9	21.7	0.0	0.9	10.8	5.6
Reeder	3.5	0.2	0.9	10.3	3.3	0.6	15.0	4.7	4.0	4.3
Amidon	11.5	9.4	0.3	11.4	2.2	0.0	3.1	4.2	0.1	3.9
Grandin	7.3	3.7	2.7	5.1	0.5	0.0	2.2	4.2	0.1	2.6
Keene	6.2	0.0	0.0	2.9	1.5	0.0	10.6	2.8	0.3	2.4
2398	0.0	0.0	0.1	7.9	1.5	0.2	7.5	3.9	0.0	2.0
Trenton	1.4	0.0	0.0	5.8	1.3	0.0	8.3	2.2	0.1	1.9
Dandy	0.0	0.4	6.1	0.0	0.0	1.1	0.0	0.0	0.6	1.5
Gus	5.0	0.0	0.4	3.0	1.4	0.0	2.2	3.8	0.1	1.5
HJ98	0.0	1.0	4.2	0.0	0.0	3.4	0.0	0.0	0.0	1.4
Butte 86	1.1	1.7	0.0	2.2	1.3	0.1	1.7	3.3	1.3	1.2
McKenzie	0.9	0.3	0.1	0.5	0.5	0.8	1.5	3.3	2.0	1.0
McNeal	2.8	0.0	0.0	5.1	0.0	0.0	2.1	0.0	0.0	0.9
2371	2.7	0.8	0.0	0.0	0.0	0.0	3.2	2.1	0.0	0.8
Forge	0.4	0.7	1.5	0.0	0.3	0.1	0.0	1.4	1.5	0.7
Ernest	0.1	0.4	0.0	1.6	0.0	0.0	3.7	1.5	0.0	0.7
Norpro	0.0	0.1	1.0	0.2	0.0	0.4	1.1	0.2	0.2	0.4
Kulm	0.3	0.0	0.0	1.2	0.1	0.0	1.3	0.3	0.9	0.4
Lars	0.0	0.0	0.3	0.0	0.0	1.9	0.0	0.0	0.0	0.3
Stoa	1.7	0.2	0.0	0.2	0.0	0.0	1.0	0.0	0.0	0.3
Len	0.0	0.2	0.0	1.6	0.1	0.0	0.0	1.3	0.0	0.3
Other <sup>2/</sup>	2.4	3.0	3.4	5.3	3.4	3.0	3.7	6.7	1.1	3.5
	1,000 Acres									
Russ	42.4	149.6	229.4	30.9	412.2	128.5	22.7	65.1	208.9	1,289.7
Gunner	107.0	215.3	460.9	81.4	110.1	73.2	63.0	28.7	4.2	1,143.8
Oxen	0.0	1.5	23.4	18.7	13.9	146.3	24.2	112.5	243.2	583.7
2375	20.3	37.8	43.4	32.7	13.0	154.3	72.6	82.8	23.2	480.1
Parshall	110.3	21.9	85.1	35.4	36.9	62.3	63.6	13.1	44.9	473.5
Alsen	42.8	87.5	201.8	16.8	29.7	60.4	4.3	4.7	25.4	473.4
Ingot	9.3	4.3	80.3	0.0	14.3	204.4	0.0	4.9	77.4	394.9
Reeder	22.2	1.4	12.6	62.4	25.6	5.3	118.1	27.1	28.4	303.1
Amidon	72.5	62.4	3.9	69.0	17.0	0.0	24.2	24.3	1.0	274.3
Grandin	46.0	24.7	38.4	30.6	4.1	0.0	17.6	24.2	0.7	186.3
Keene	38.9	0.0	0.0	17.5	11.3	0.0	83.3	15.9	2.5	169.4
2398	0.0	0.0	0.8	47.7	11.5	2.1	58.7	22.5	0.0	143.3
Trenton	8.8	0.0	0.0	35.0	10.2	0.0	64.8	12.4	0.9	132.1
Dandy	0.0	2.9	86.7	0.2	0.0	10.8	0.1	0.0	4.3	105.0
Gus	31.2	0.0	5.2	18.2	11.0	0.0	16.9	22.0	0.4	104.9
HJ98	0.0	6.9	60.3	0.0	0.0	32.3	0.0	0.0	0.0	99.5
Butte 86	6.9	11.1	0.0	13.2	10.0	1.1	13.2	18.8	9.6	83.9
McKenzie	5.6	1.8	1.2	3.3	3.6	7.4	11.8	18.8	14.2	67.7
McNeal	17.9	0.0	0.0	30.8	0.0	0.0	16.2	0.0	0.0	64.9
2371	16.7	5.5	0.0	0.0	0.0	0.0	24.9	12.1	0.0	59.2
Forge	2.8	4.5	21.1	0.0	2.5	1.0	0.0	7.8	10.4	50.1
Ernest	0.9	2.5	0.0	9.7	0.0	0.0	29.4	8.6	0.0	51.1
Norpro	0.0	0.6	14.3	1.5	0.0	3.9	8.5	1.1	1.2	31.1
Kulm	1.6	0.0	0.0	7.0	1.1	0.0	10.1	1.5	6.3	27.6
Lars	0.0	0.0	3.6	0.0	0.0	18.1	0.0	0.0	0.0	21.7
Stoa	10.6	1.1	0.0	1.2	0.0	0.0	8.1	0.0	0.0	21.0
Len	0.0	1.5	0.0	9.8	0.8	0.0	0.0	7.4	0.0	19.5
Other <sup>2/</sup>	15.3	20.2	47.6	32.0	26.2	28.6	28.7	38.7	7.9	245.2
All Varieties	630.0	665.0	1,420.0	605.0	765.0	940.0	785.0	575.0	715.0	7,100.0

1/ Percentages may not add to 100 due to rounding. 2/ Other includes other varieties not listed and unknown varieties.

**2001 DURUM & WINTER WHEAT REVISED**

**DURUM WHEAT<sup>1/</sup>**

**Percent of Acreage Planted, North Dakota, 1997-2001**

Variety	1997	1998	1999	2000	2001	
					Pct.	Acres Planted
	----- Percent -----				- 1,000 -	
Ben	0.4	5.0	26.0	29.0	27.5	606.0
Renville	34.2	30.5	22.1	20.3	20.6	454.1
Munich	3.6	7.2	10.1	12.7	8.0	175.0
Mountrail	0.0	0.0	0.4	0.7	7.9	173.0
Monroe	30.7	18.1	12.7	10.3	7.3	159.9
Rugby	7.6	10.2	12.9	8.9	6.5	142.2
Kyle	4.4	10.1	6.5	7.5	6.2	135.5
Lebsock	0.0	0.0	0.0	0.1	3.2	70.8
Maier	0.0	0.0	0.1	0.6	3.0	64.9
Vic	5.0	5.5	2.5	2.7	2.2	49.0
Medora	4.5	2.5	1.2	1.8	1.4	30.9
Crosby	0.0	0.3	0.1	0.1	1.0	22.3
Plenty	4.4	4.8	2.2	1.4	1.0	22.2
Fjord	0.9	1.6	0.3	0.2	0.6	13.5
Belzer	0.0	0.1	0.6	1.2	0.4	9.8
Other <sup>2/</sup>	4.3	4.1	2.3	2.5	3.2	70.9
All Varieties	100.0	100.0	100.0	100.0	100.0	2,200.0

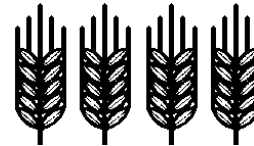
1/ Percentages may not add to 100 due to rounding. 2/ Other includes other varieties not listed and unknown varieties.

**WINTER WHEAT<sup>1/</sup>**

**Percent of Acreage Planted, North Dakota, 1997-2001**

Variety	1997	1998	1999	2000	2001	
					Pct.	Acres Planted
	----- Percent -----				- 1,000 -	
Arapahoe	20.5	10.7	10.8	12.3	31.1	46.6
Roughrider	31.0	30.8	25.0	32.6	16.7	25.1
Elkhorn	13.8	24.3	22.4	25.7	12.3	18.4
Seward	29.8	24.3	17.6	2.8	9.1	13.6
Ransom	0.0	0.0	0.0	4.3	8.5	12.7
Nekota	0.0	0.0	3.2	2.4	8.1	12.2
Crimson	0.0	0.0	0.0	0.0	3.7	5.6
Other <sup>2/</sup>	4.9	9.9	21.0	19.9	10.5	15.8
All Varieties	100.0	100.0	100.0	100.0	100.0	150.0

1/ Percentages may not add to 100 due to rounding. 2/ Other includes other varieties not listed and unknown varieties.



**DURUM WHEAT<sup>1/</sup>**

**Percent and Acreage Planted, North Dakota, 2001**

Variety	Northwest	North Central	Northeast	West Central	Central	East Central	Southwest	South Central	Southeast	State
	----- Percent Planted -----									
Ben	19.9	25.3	8.2	32.4	36.9	45.3	77.1	12.6	32.5	27.5
Renville	26.1	16.6	5.4	25.4	0.0	8.7	2.1	25.3	46.7	20.6
Munich	6.3	12.6	50.6	1.2	0.0	0.0	0.0	0.0	11.7	8.0
Mountrail	10.0	2.1	0.0	15.2	0.0	0.0	0.2	3.5	0.0	7.9
Monroe	10.6	0.0	0.0	6.1	0.0	0.0	1.2	18.6	0.0	7.3
Rugby	0.5	29.4	30.5	2.3	43.5	45.3	0.0	0.0	0.0	6.5
Kyle	9.8	3.9	0.0	0.0	0.0	0.0	2.5	4.2	0.0	6.2
Lebsock	2.2	6.3	4.0	6.0	5.4	0.0	1.8	2.8	9.2	3.2
Maier	2.8	0.3	0.0	4.4	9.1	0.0	2.3	12.6	0.0	3.0
Vic	3.3	0.0	0.0	0.5	5.0	0.0	1.0	0.0	0.0	2.2
Medora	1.6	0.0	0.0	0.0	0.0	0.0	4.8	0.0	0.0	1.4
Crosby	1.8	0.0	0.0	0.0	0.0	0.0	0.0	0.0	0.0	1.0
Plenty	1.4	0.0	0.1	0.3	0.0	0.0	0.0	7.9	0.0	1.0
Fjord	0.4	0.0	0.0	3.1	0.0	0.0	0.0	0.0	0.0	0.6
Belzer	0.7	0.0	0.0	0.0	0.0	0.0	0.3	0.0	0.0	0.4
Other <sup>2/</sup>	2.7	3.5	1.2	3.3	0.1	0.7	6.7	12.6	0.0	3.2
	----- 1,000 Acres -----									
Ben	248.3	39.2	11.7	92.2	28.8	6.8	169.7	5.4	3.9	606.0
Renville	326.0	25.7	7.6	72.4	0.0	1.3	4.6	10.9	5.6	454.1
Munich	78.8	19.6	71.8	3.4	0.0	0.0	0.0	0.0	1.4	175.0
Mountrail	124.6	3.3	0.0	43.2	0.0	0.0	0.4	1.5	0.0	173.0
Monroe	131.9	0.0	0.0	17.4	0.0	0.0	2.6	8.0	0.0	159.9
Rugby	6.0	45.6	43.3	6.6	33.9	6.8	0.0	0.0	0.0	142.2
Kyle	122.2	6.0	0.0	0.0	0.0	0.0	5.5	1.8	0.0	135.5
Lebsock	27.7	9.8	5.7	17.1	4.2	0.0	4.0	1.2	1.1	70.8
Maier	34.5	0.4	0.0	12.5	7.1	0.0	5.0	5.4	0.0	64.9
Vic	41.5	0.0	0.0	1.3	3.9	0.0	2.3	0.0	0.0	49.0
Medora	20.4	0.0	0.0	0.0	0.0	0.0	10.5	0.0	0.0	30.9
Crosby	22.3	0.0	0.0	0.0	0.0	0.0	0.0	0.0	0.0	22.3
Plenty	17.8	0.0	0.2	0.8	0.0	0.0	0.0	3.4	0.0	22.2
Fjord	4.8	0.0	0.0	8.7	0.0	0.0	0.0	0.0	0.0	13.5
Belzer	9.1	0.0	0.0	0.0	0.0	0.0	0.7	0.0	0.0	9.8
Other <sup>2/</sup>	34.1	5.4	1.7	9.4	0.1	0.1	14.7	5.4	0.0	70.9
All Varieties	1,250.0	155.0	142.0	285.0	78.0	15.0	220.0	43.0	12.0	2,200.0

1/ Percentages may not add to 100 due to rounding. 2/ Other includes other varieties not listed and unknown varieties.