



MISSISSIPPI DEPARTMENT OF  
**AGRICULTURE  
& COMMERCE**

**Mississippi State**  
UNIVERSITY  
**Extension**  
SERVICE

# *Mississippi Cotton and Corn Statistics*

Thomas L. Gregory  
National Agricultural Statistics Service  
Jackson, MS  
[Tommy\\_Gregory@nass.usda.gov](mailto:Tommy_Gregory@nass.usda.gov)

Fred L. Shore, Ph.D.  
Mississippi Department of Agriculture  
and Commerce  
Jackson, MS

Commissioner Lester Spell, Jr., D.V.M., Mississippi Department of Agriculture and Commerce, Melissa J. Mixon, Interim Director, Mississippi Cooperative Extension Service, and the USDA Field Enumerators in Mississippi were critical to the success of this project. Also, thank you to Rick Mueller, Claire Boryan, Dave Johnson, and other members of USDA-NASS, Spatial Analysis Research Section, Fairfax, VA for training and assistance.

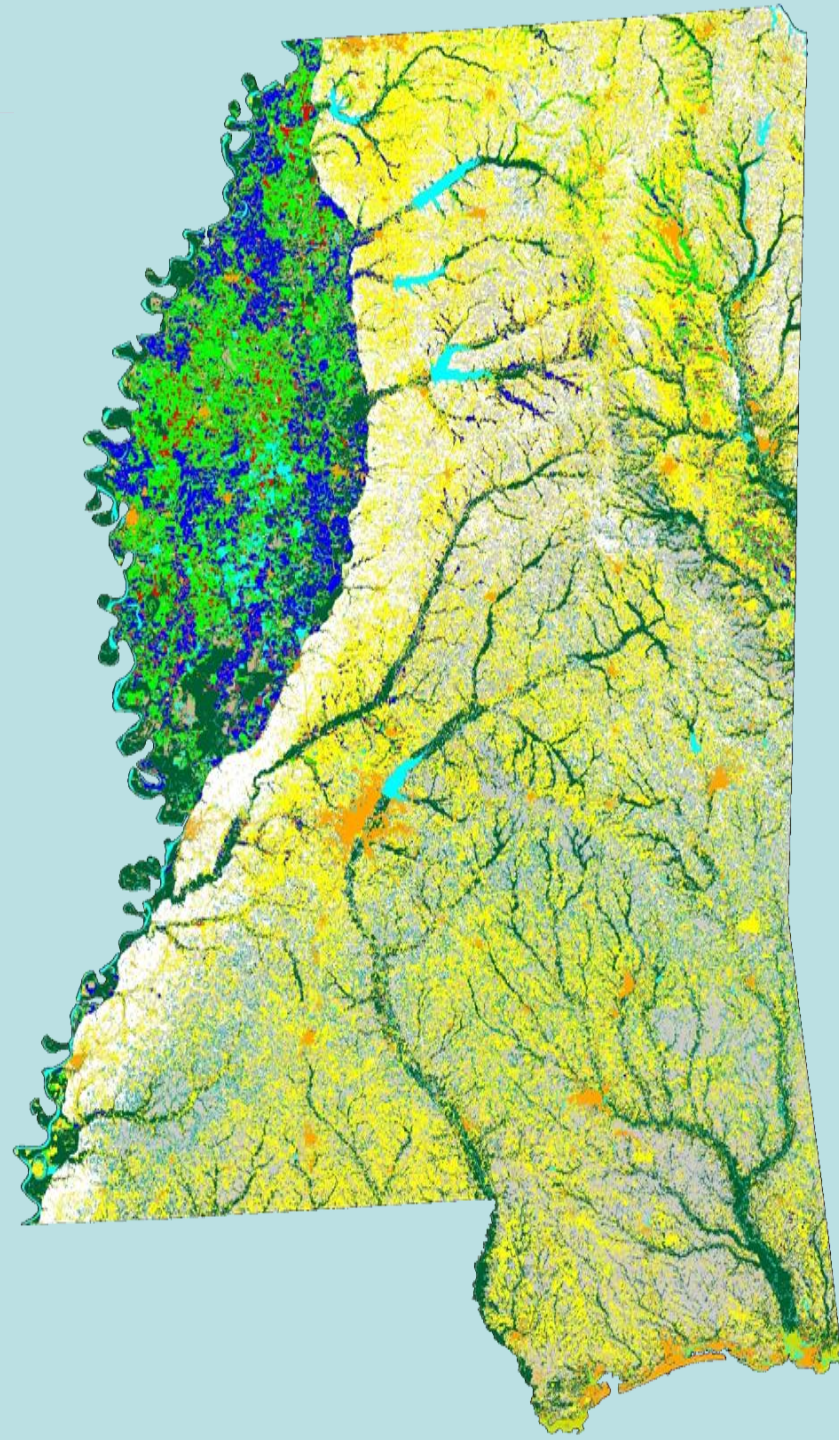




# Mississippi Cotton and Corn Fields in 2006

Cotton is grown mainly  
beside ancient and  
existing creek beds in  
the Delta region of  
Mississippi.

## Legend



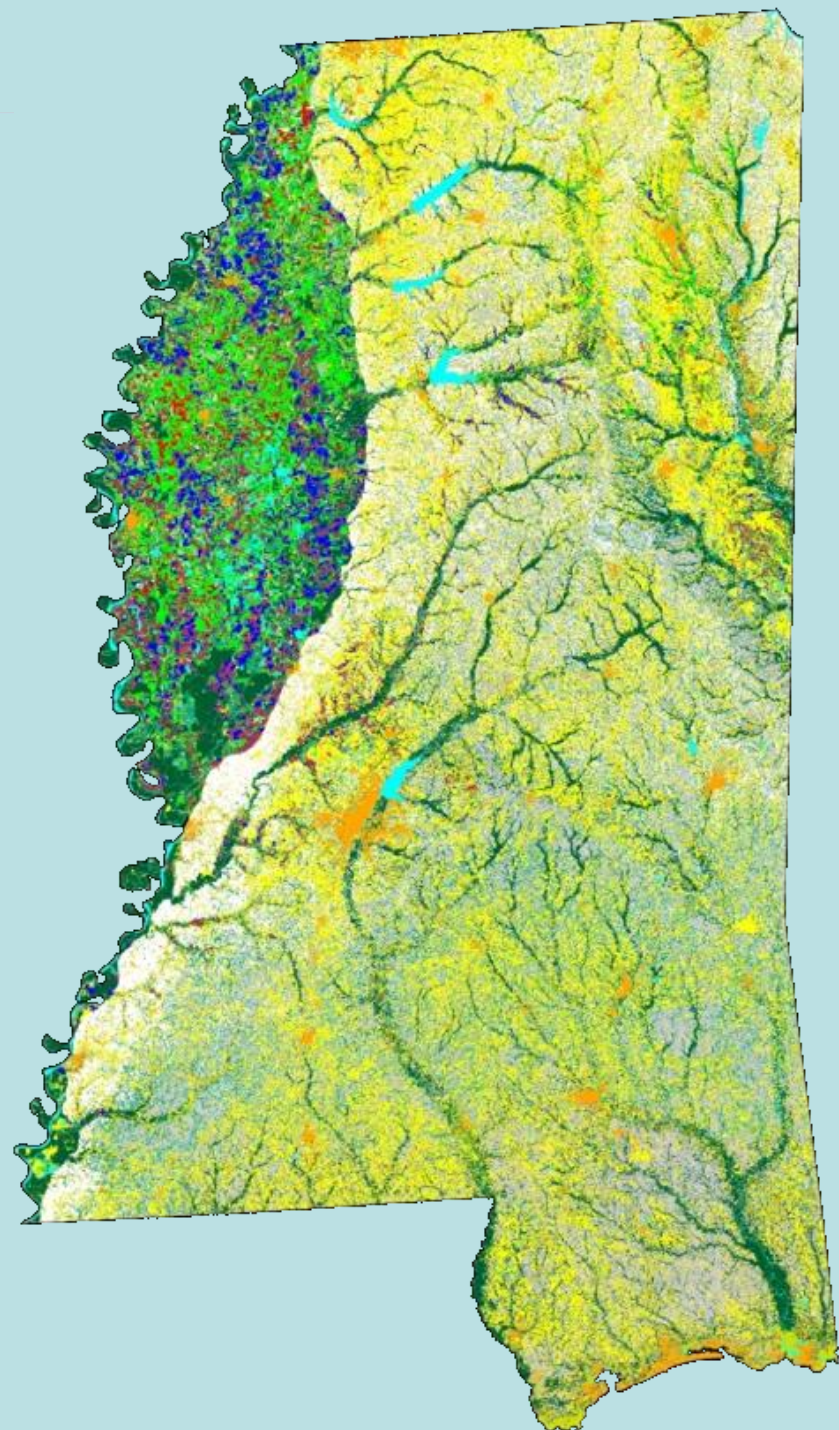


# Mississippi Cotton and Corn Fields in 2007

Many of the cotton fields in 2006 were planted to corn in 2007, particularly in the lower Delta near Vicksburg.

Construction started in October, 2006 on the Mississippi's first corn to ethanol plant in Vicksburg.

## Legend

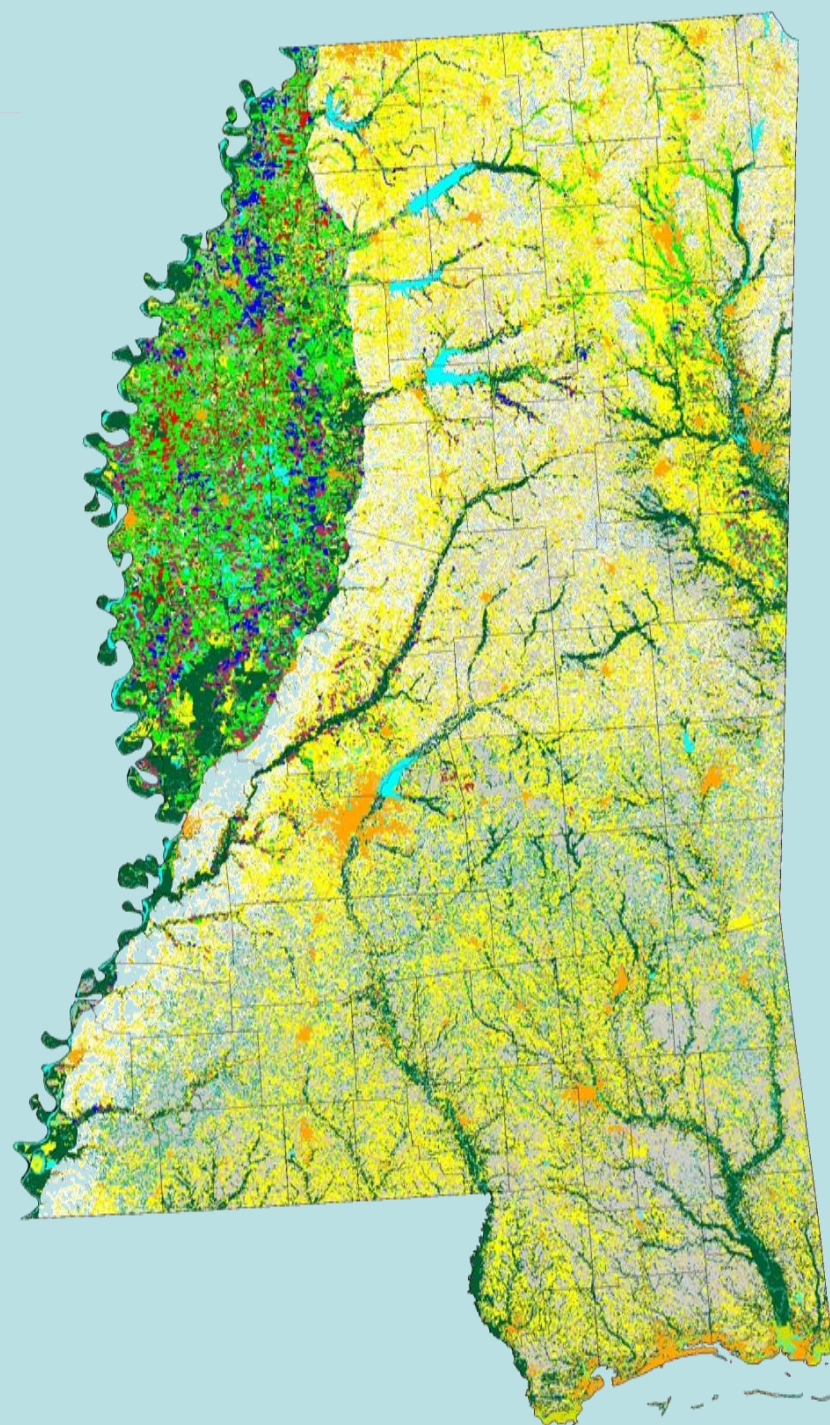




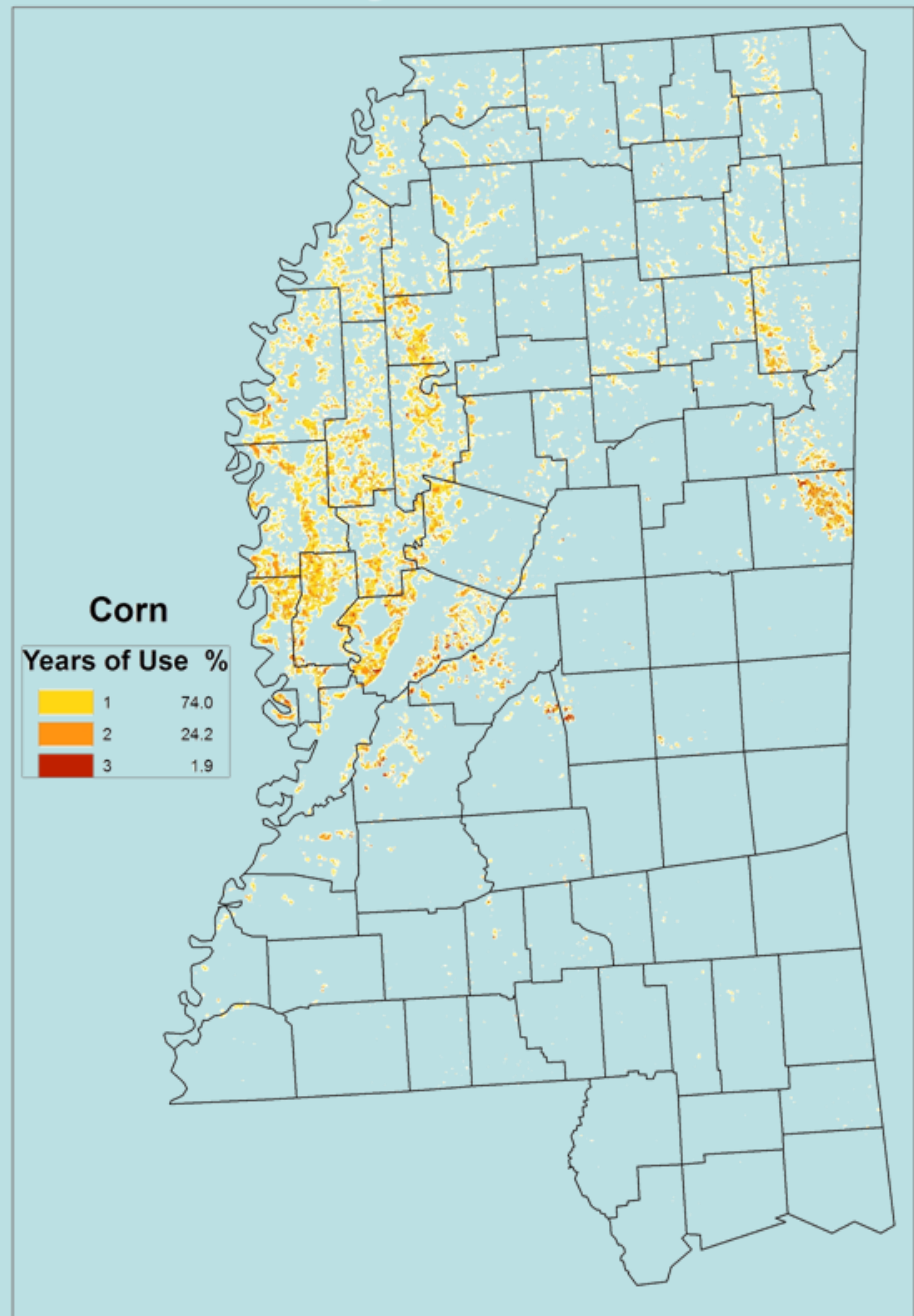
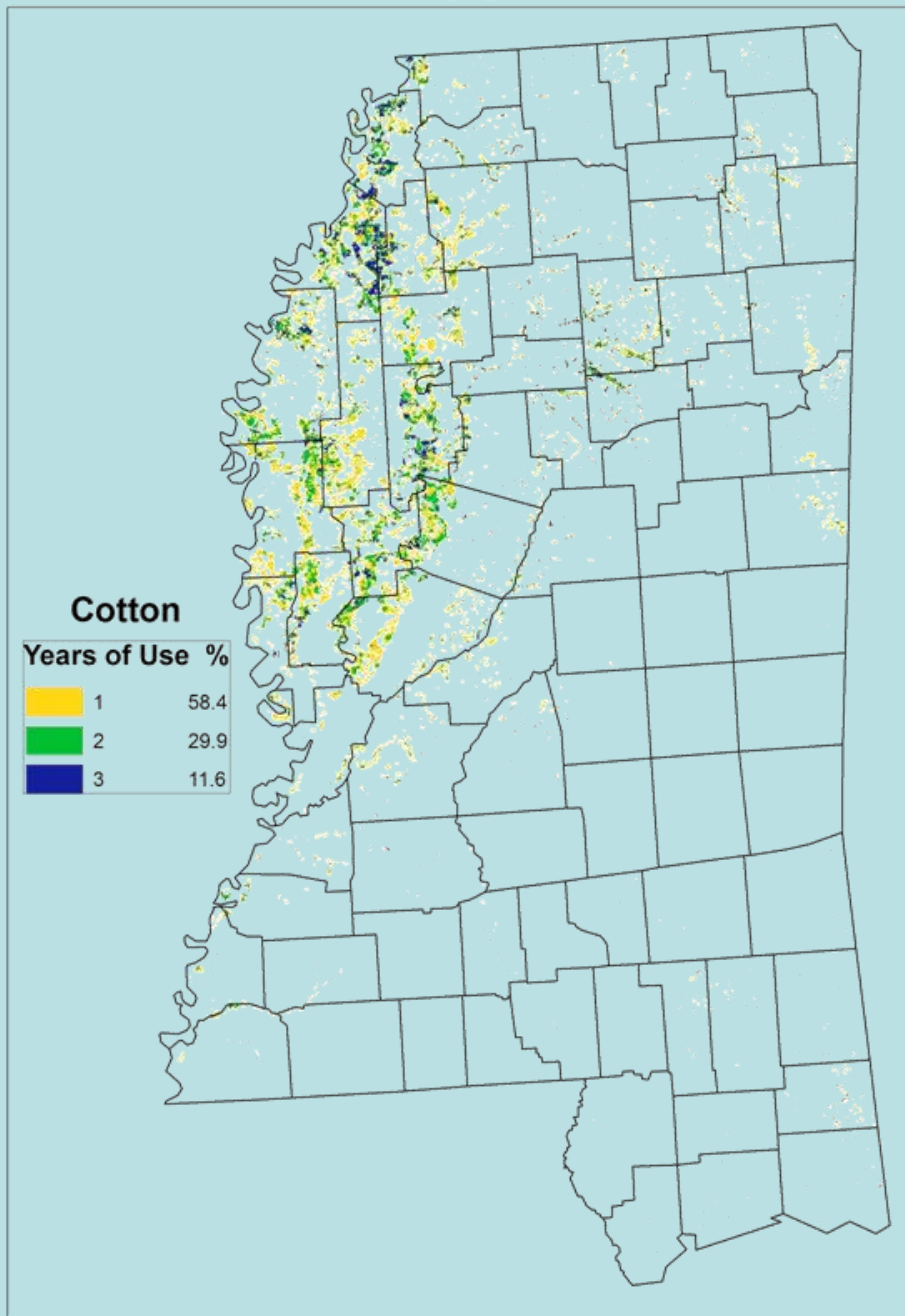
# Mississippi Cotton and Corn Fields in 2008

Cotton acreage in 2008 was only 360,000 acres, the lowest acreage since official records started in 1866. Corn acreage was also down from 2007. Soybeans made up over half of the total cultivated crop acres.

## Legend



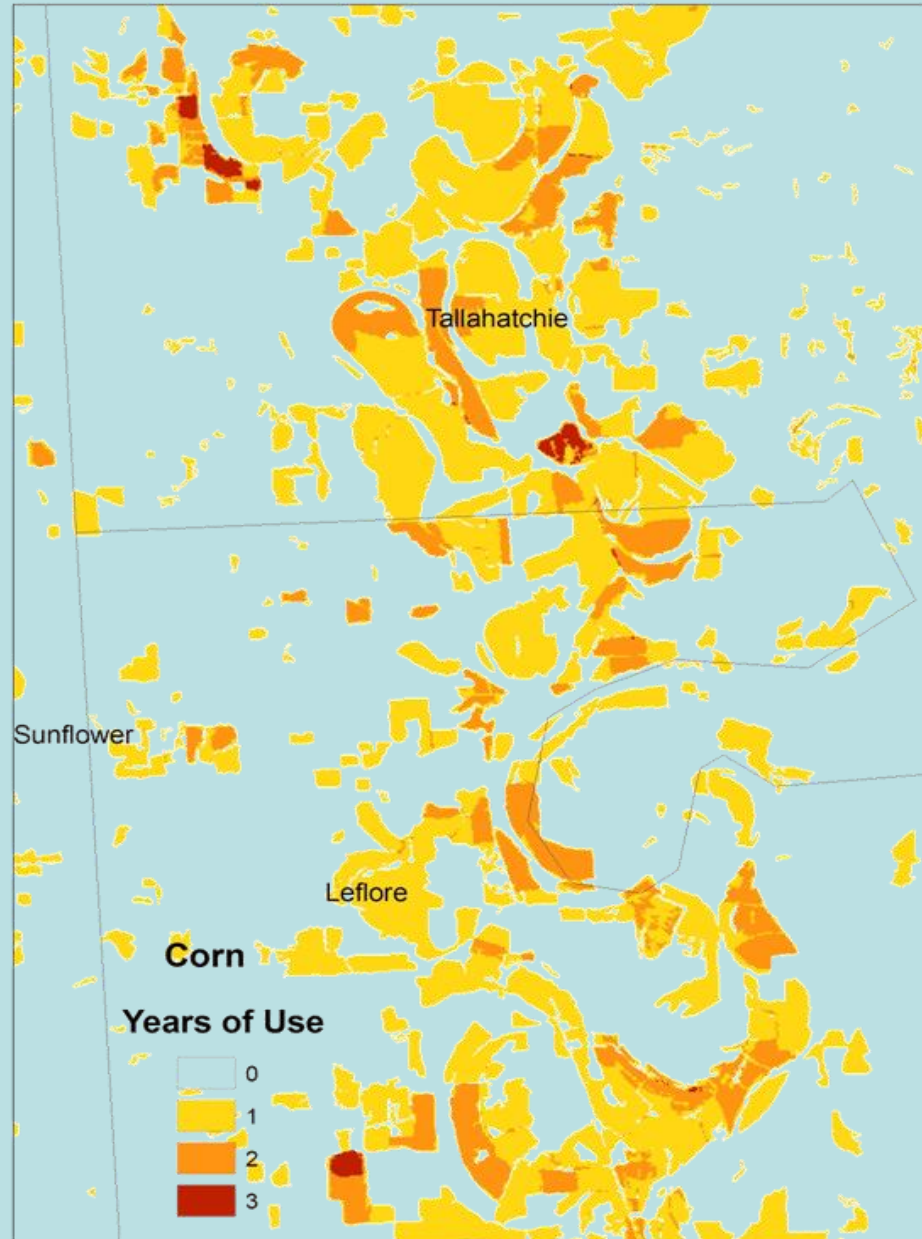
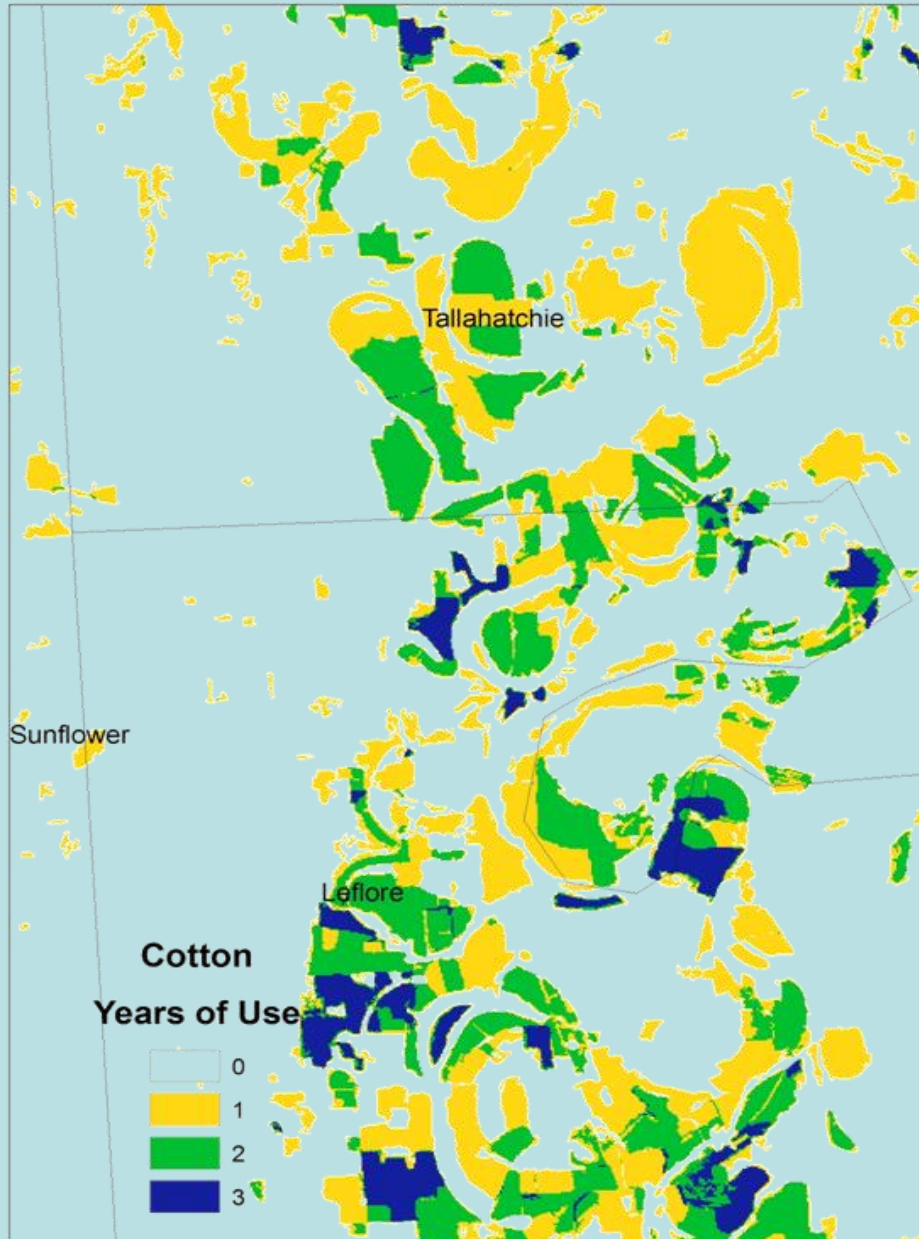
# Mississippi Cotton and Corn Intensity, 2006-2008





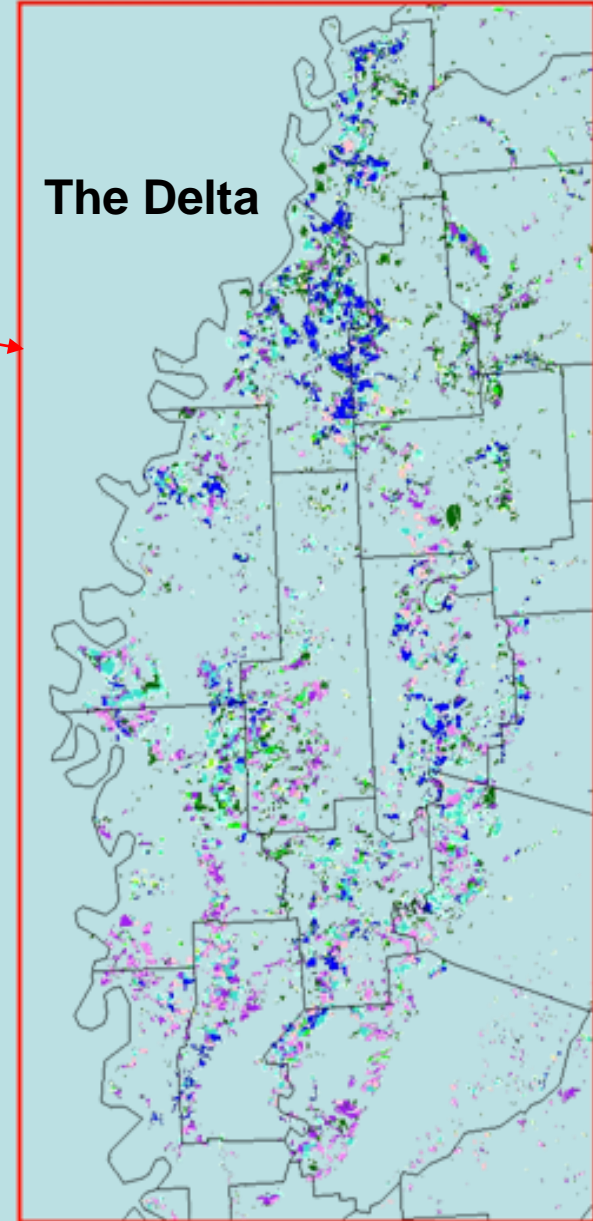
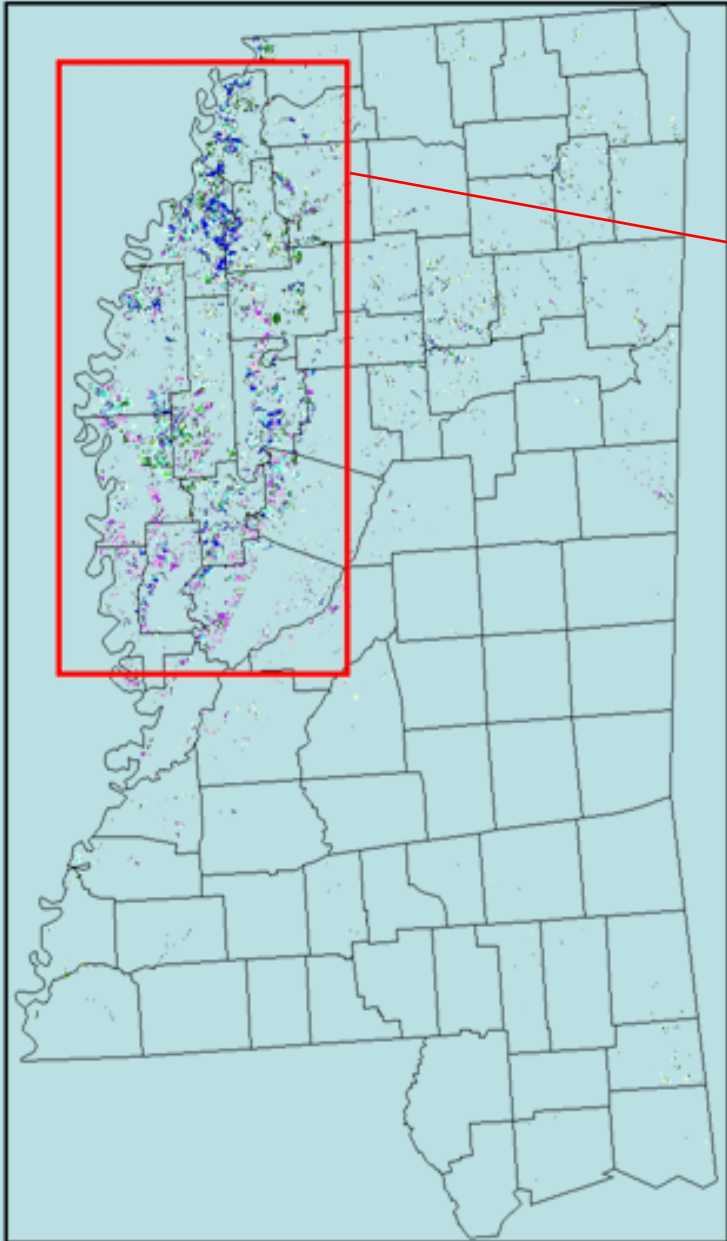
# Cotton and Corn Intensity, 2006-2008

Tallahatchie, Leflore and Sunflower County Segments


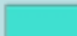
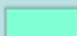

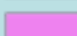
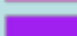
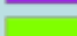
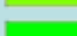



# Mississippi Cotton Rotation from 2006

(82.9% of all land planted to cotton 2006-2008)



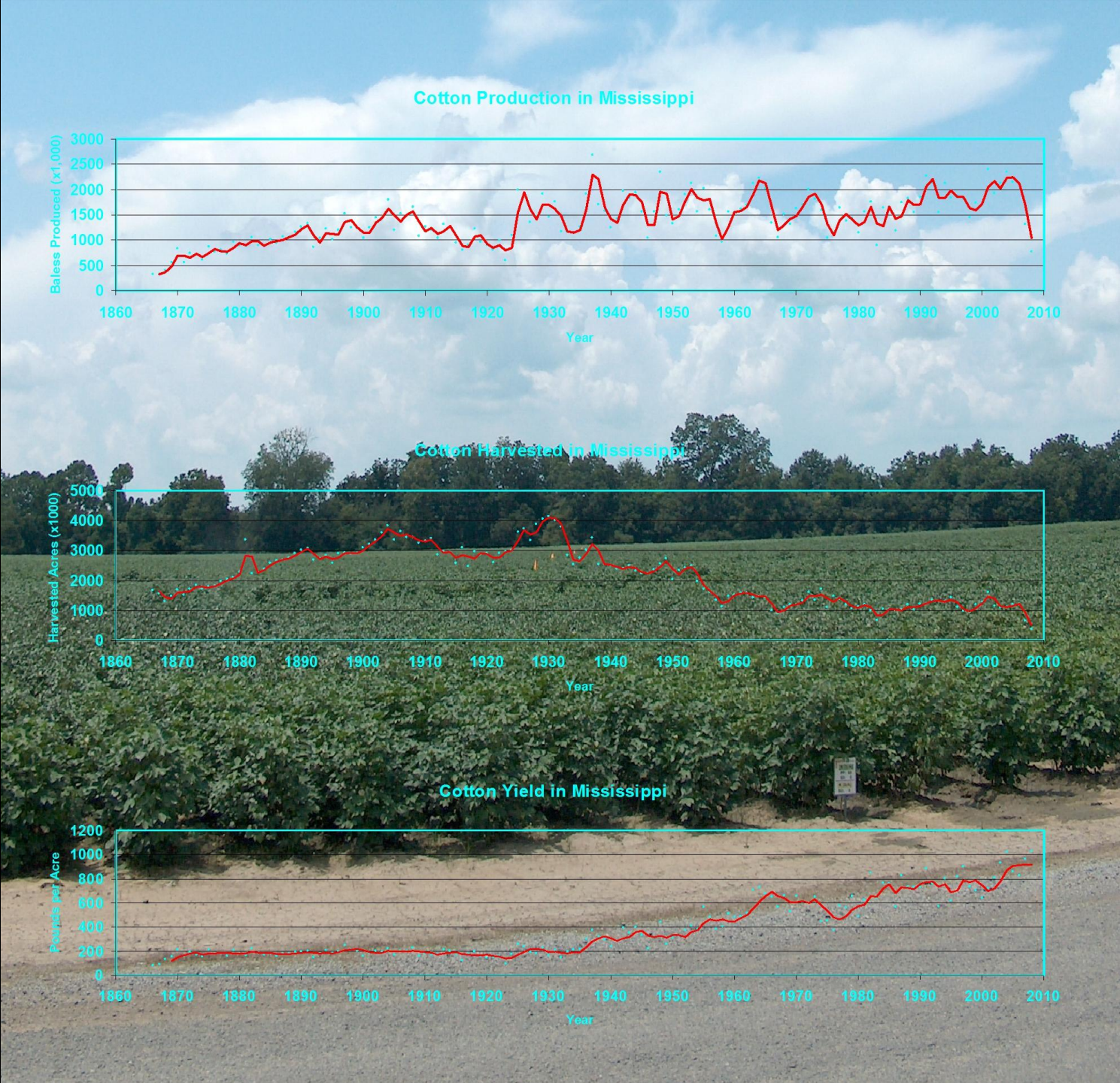
## Crop Rotation Pattern and Frequency

2006-2007-2008	%
 cotton-cotton-cotton	14.0
 cotton-cotton-corn	11.2
 cotton-cotton-other	13.2
 cotton-corn-cotton	6.2
 cotton-corn-corn	10.3
 cotton-corn-other	15.0
 cotton-other-cotton	3.2
 cotton-other-corn	4.2
 cotton-other-other	22.7

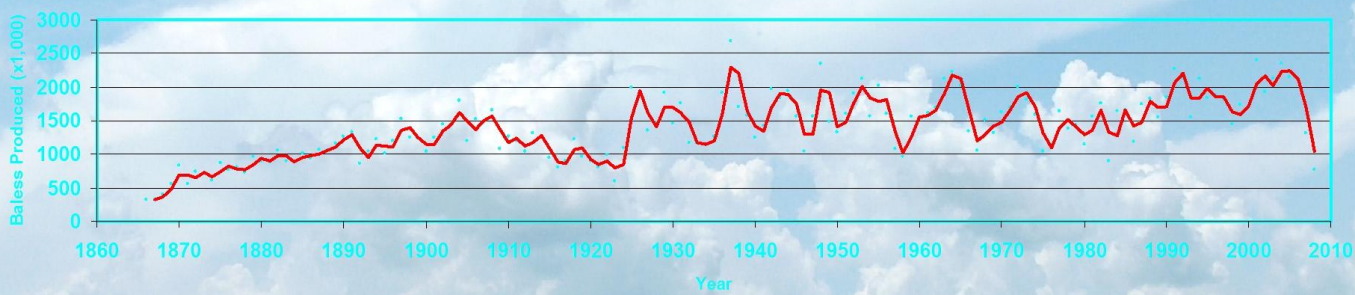


# Cotton Statistics for Mississippi Farms

Cotton production is cyclical. Harvested acres are at the lowest point on record, and cotton yield is at an all time high.



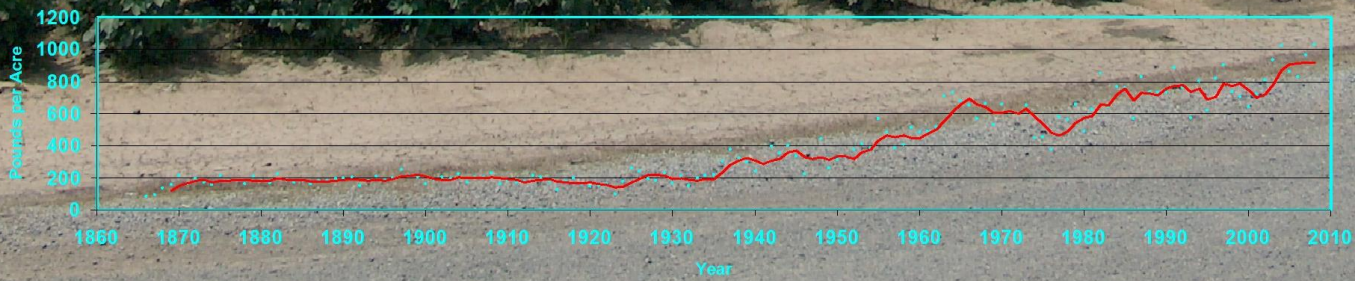
### Cotton Production in Mississippi



### Cotton Harvested in Mississippi



### Cotton Yield in Mississippi

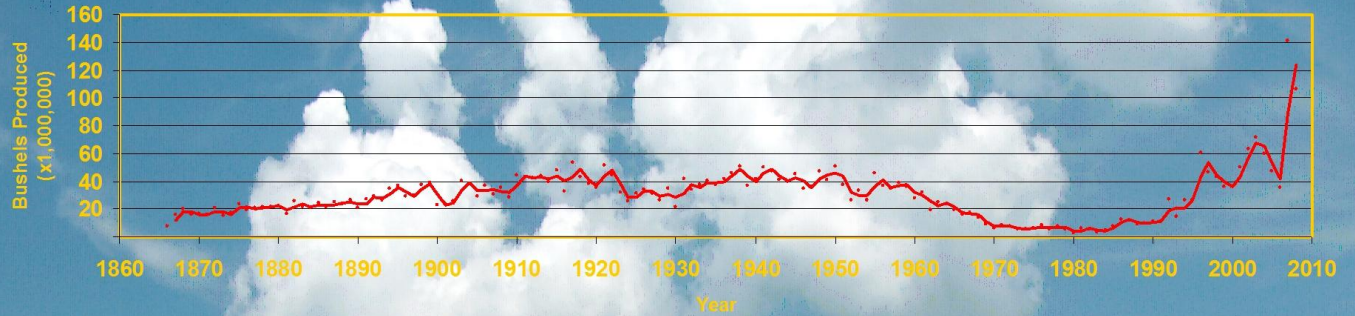




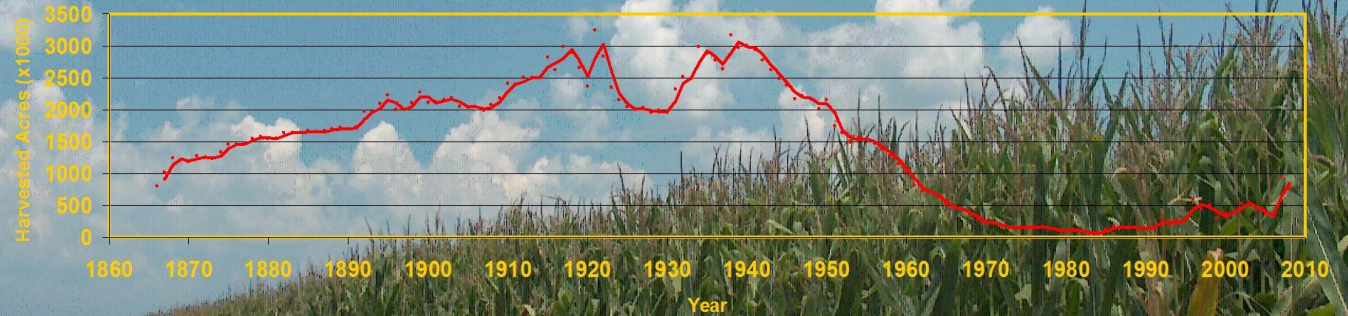
# Corn Statistics for Mississippi Farms

Both yield and production have increased at a faster rate than the harvested acreage, making the new ethanol production goals easier to obtain.

### Corn Production in Mississippi



### Corn Harvested in Mississippi

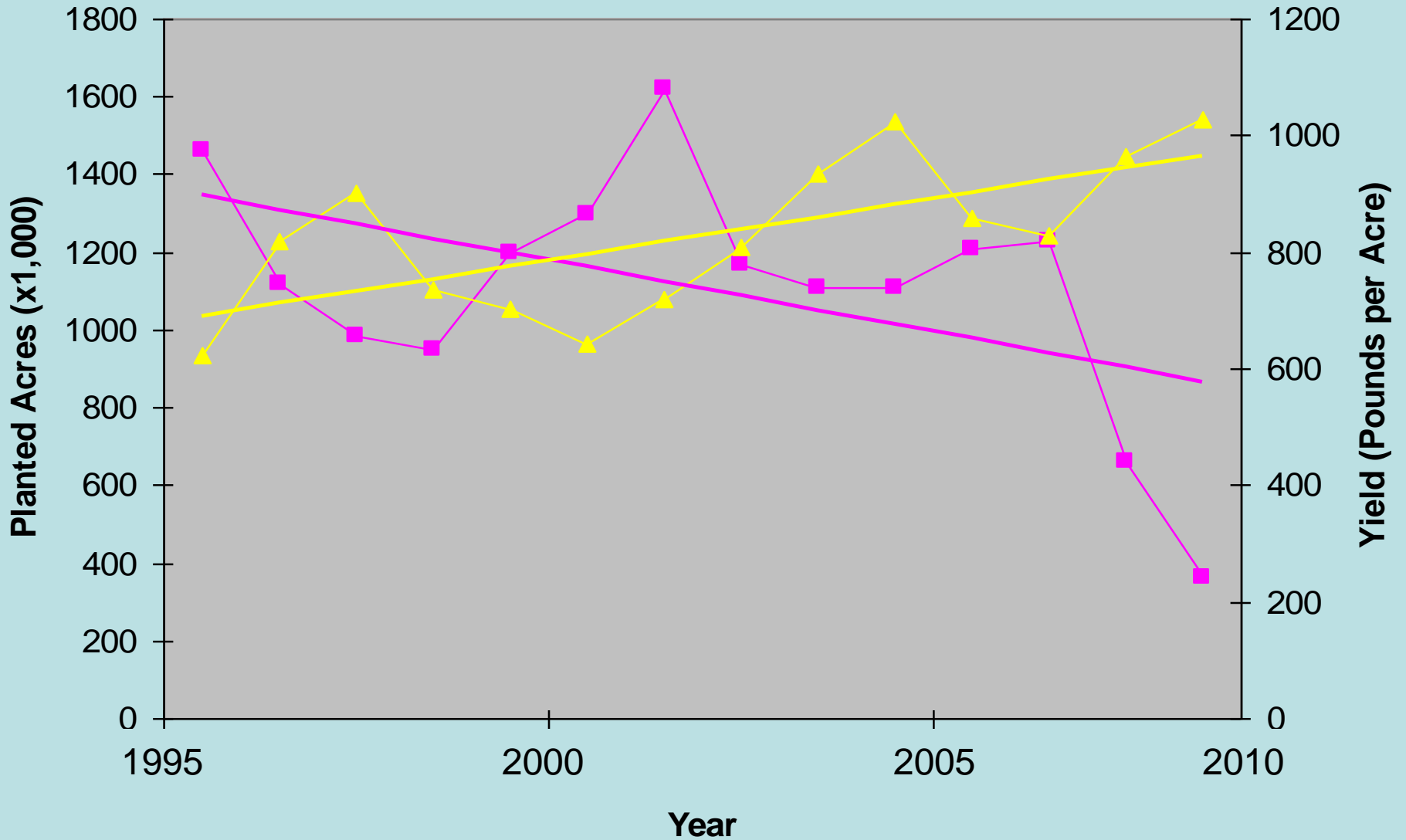


### Corn Yield in Mississippi



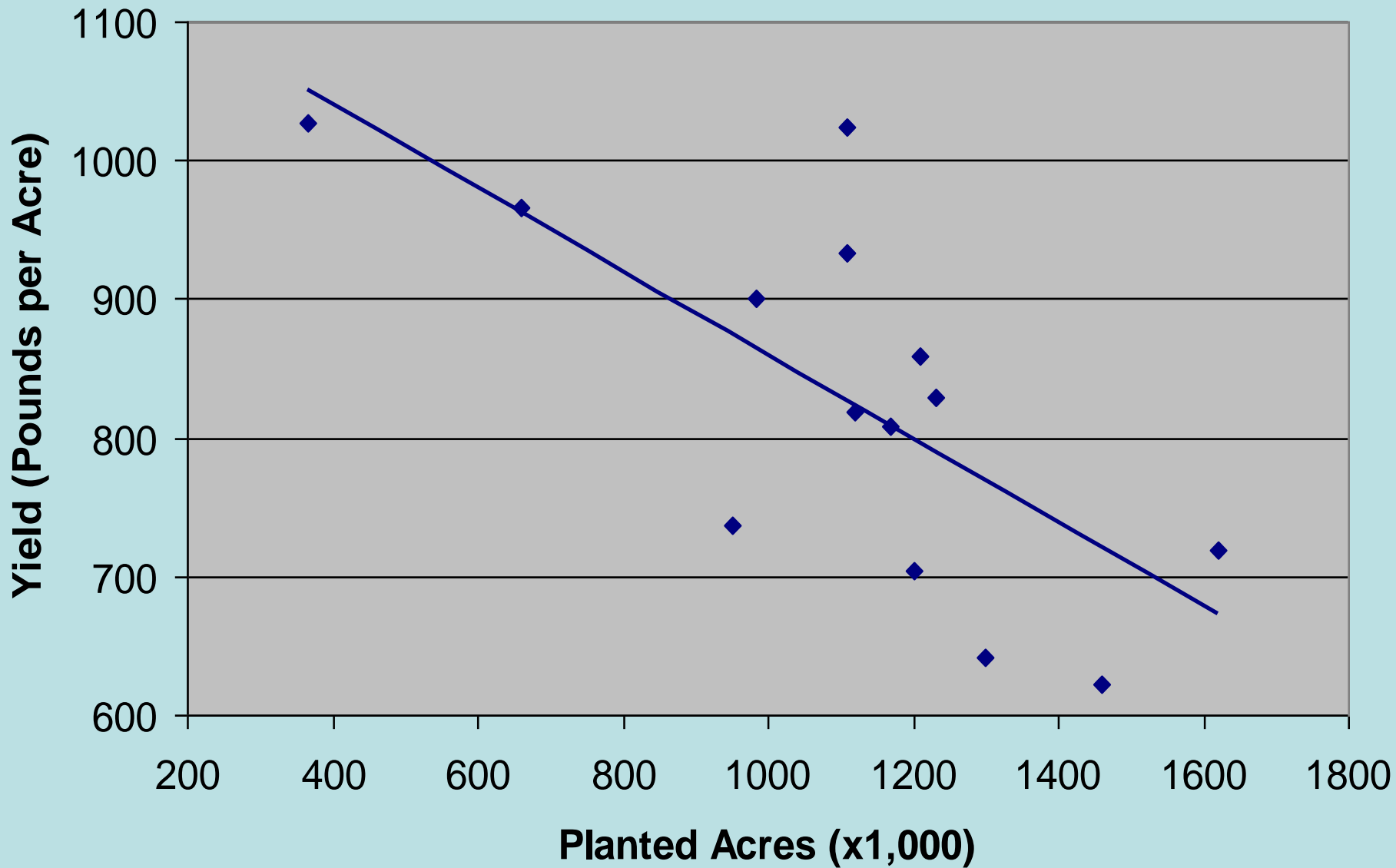


# Cotton Yield and Acres, 1995-2008



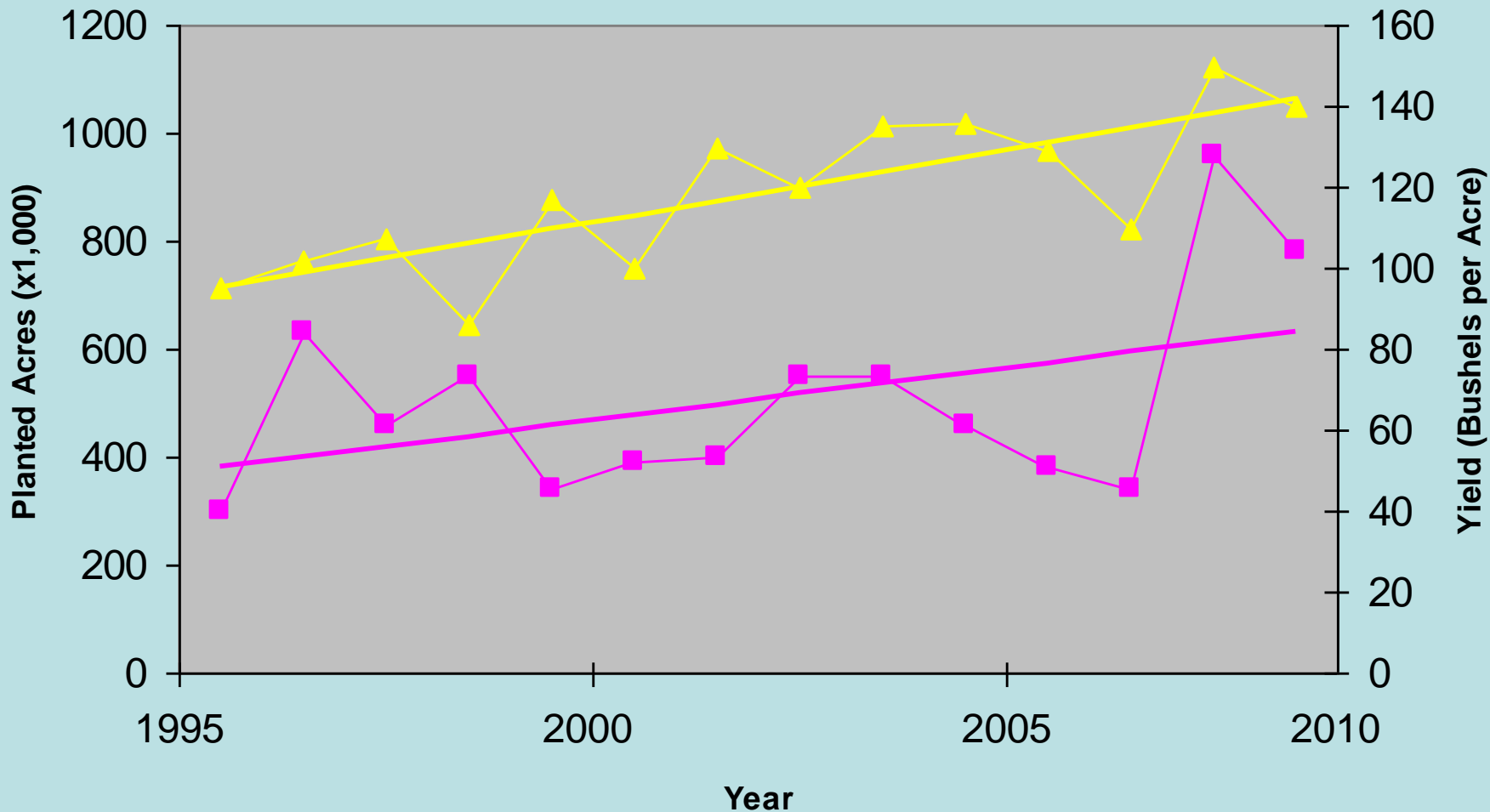
—■— Planted All Purposes —▲— Yield — Linear (Planted All Purposes) — Linear (Yield)

# Cotton Yield vs. Acres, 1995-2008

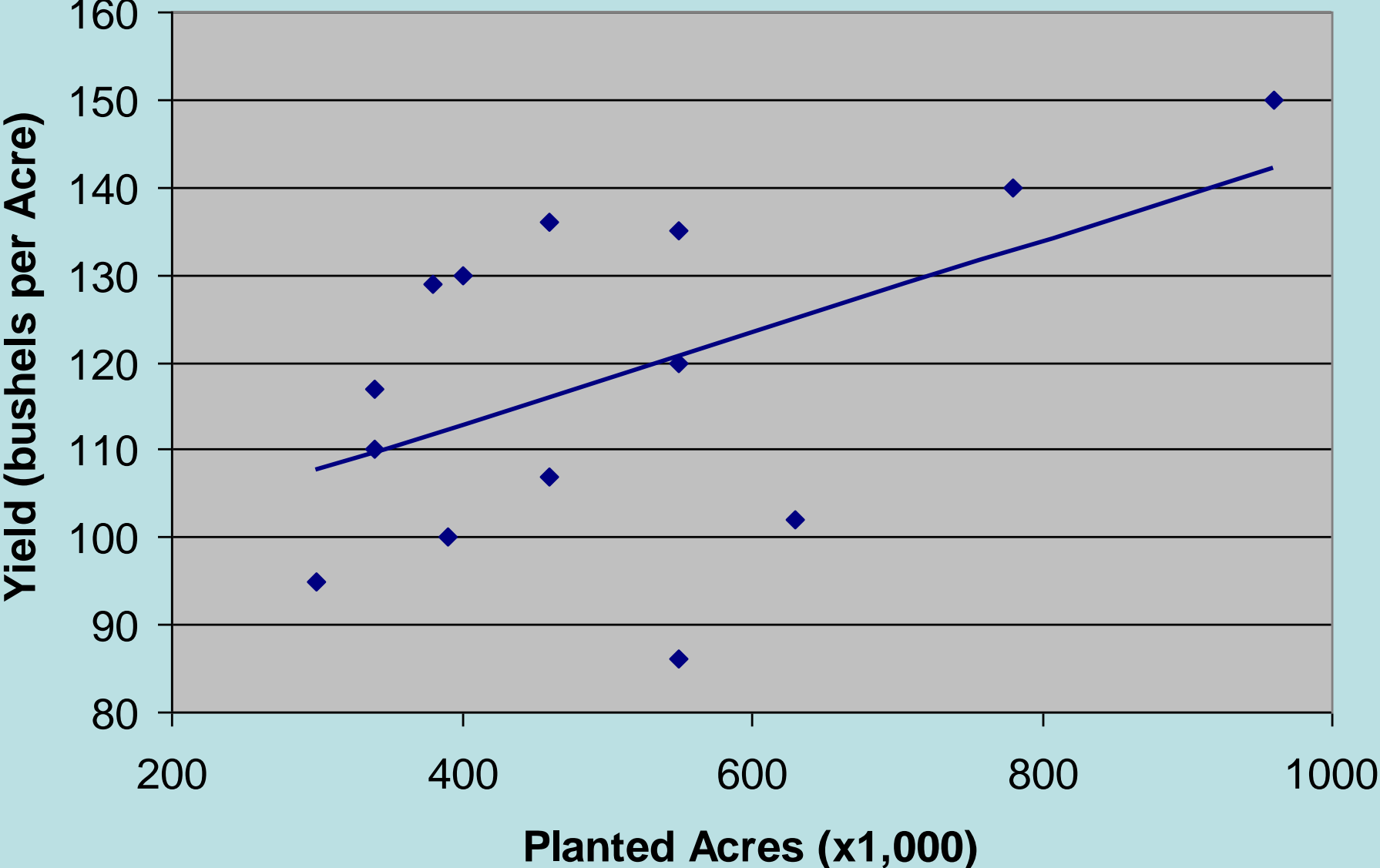




# Corn Yield and Acres, 1995-2008



# Corn Yield vs. Acres, 1995-2008





# *Mississippi Cotton and Corn Statistics*

## **Results and Conclusions**

- Recent legislation, higher prices and the corn to ethanol plant in Vicksburg have favored corn over cotton in Mississippi.
- For land that was planted to cotton in 2006, 38.4% was planted to cotton in 2007, and 14% was planted to cotton in 2007 and 2008. Rotation to cotton was more common in the northern Delta.
- For land that was planted to cotton in 2006, 31.5% was planted to corn in 2007, and 10.3% was planted to corn in 2007 and 2008. Rotation to corn was more common in the southern Delta.
- The reasons for recent greater yields for cotton as the planted acres decreased and greater yields for corn as the acres increased include limiting planting to more fertile soil for each crop and crop rotations.
- Historical swings in cotton production suggest future increases are probable as demand for cotton changes.
- Recent dramatic changes in crop acreage reinforce the need for NASS annual estimates.