



United States Department of Agriculture  
**National Agricultural Statistics Service**

---

---



**CROP PRODUCTION – ANNUAL  
GRAIN STOCKS  
RICE STOCKS  
WINTER WHEAT SEEDINGS  
JANUARY CROP PRODUCTION**

Executive Summary



# Contents



Field Crops	Stocks	Fruits/Nuts
Planted Acres	Corn	Citrus
Harvested Acres	Soybeans	
Yield	Cotton	
Production	Sorghum	
Winter Wheat Seedings	Rice	
	Hay	
	All Wheat	



# Survey Overview

	<b>December Ag Survey</b>
Survey Type	Farmer Reported
Collection Method	Mail, Phone, Internet, Personal Interview
Crops Included	Field Crops
States	All except AK and HI
Sample Size	83,650
Collection Period	Nov. 26 – Dec. 17



# U.S. Principal Crops Planted

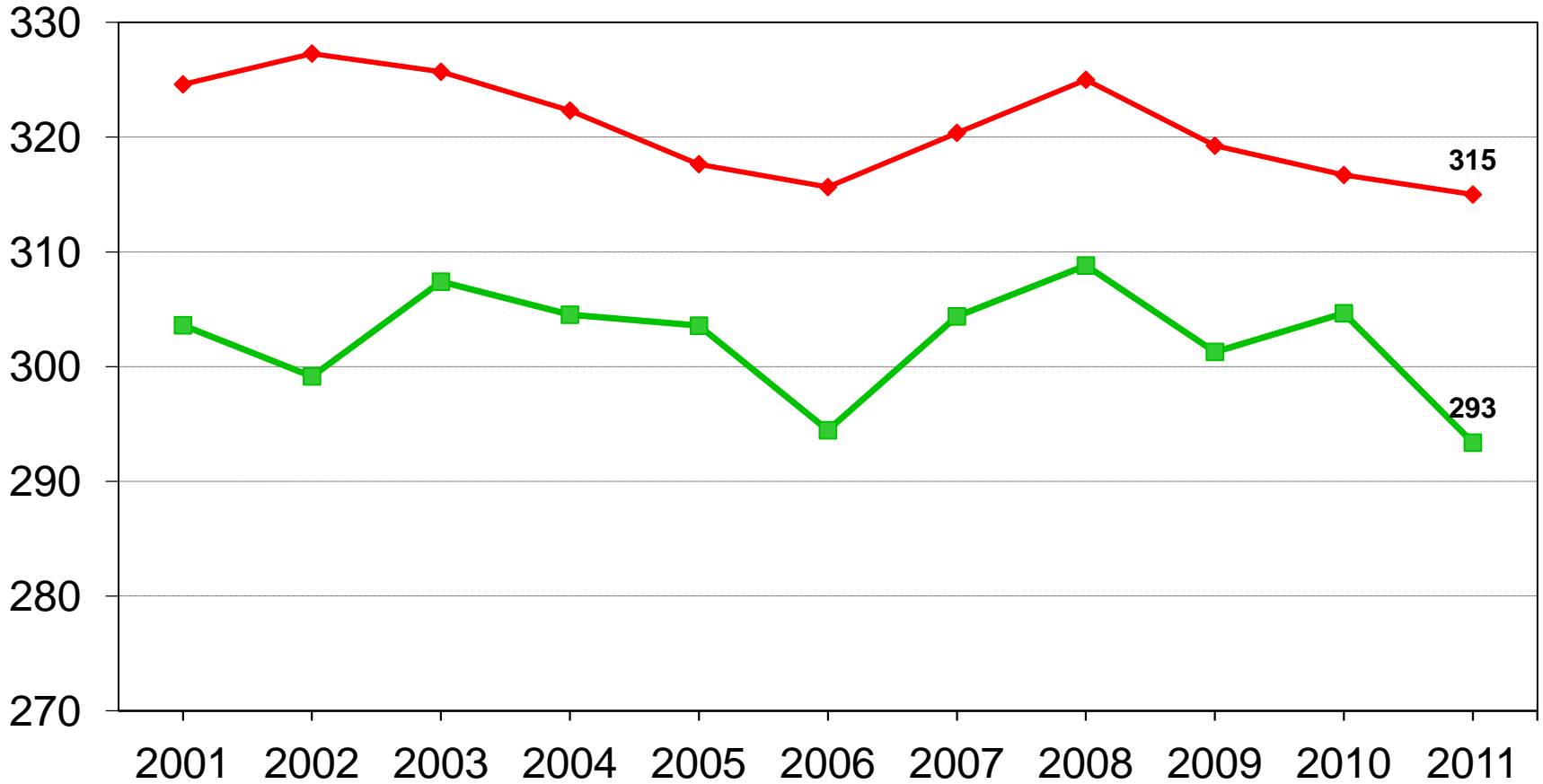
Year	Principal Crops	Change from Previous Year
<i>---Million acres---</i>		
2002	327.3	+ 2.7
2003	325.7	- 1.6
2004	322.3	- 3.4
2005	317.6	- 4.7
2006	315.6	- 2.0
2007	320.4	+ 4.7
2008	325.0	+ 4.6
2009	319.3	- 5.7
2010	316.7	- 2.6
2011	315.0	- 1.7



# U.S. Principal Crop Acres



Million acres



◆ Planted ■ Harvested

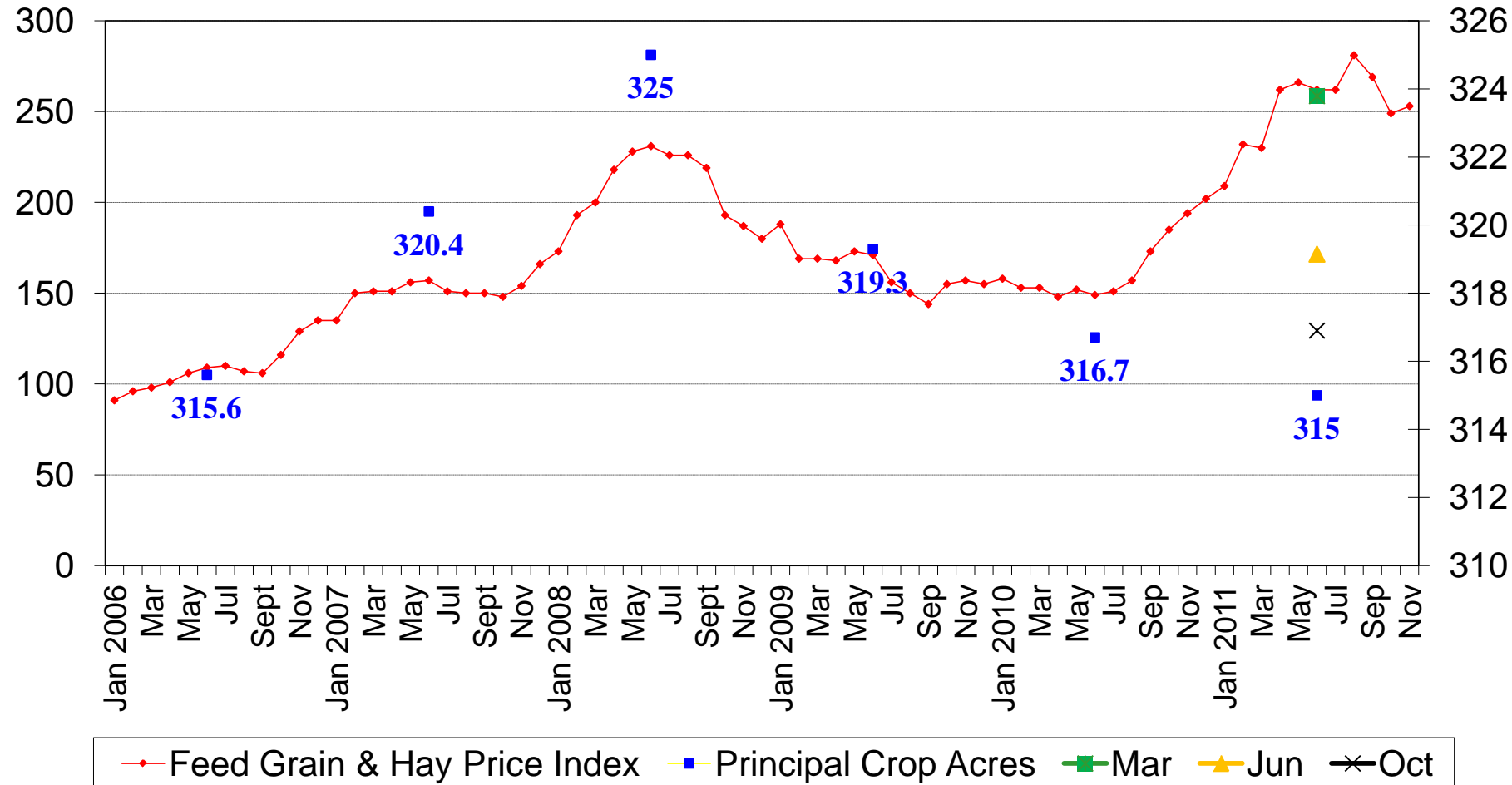


# Feed Grain & Hay Price Index and Principal Crop Acres (2006-2011)



Percent  
(1990-92=100)

Million Acres





# Crop Production 2011 Annual

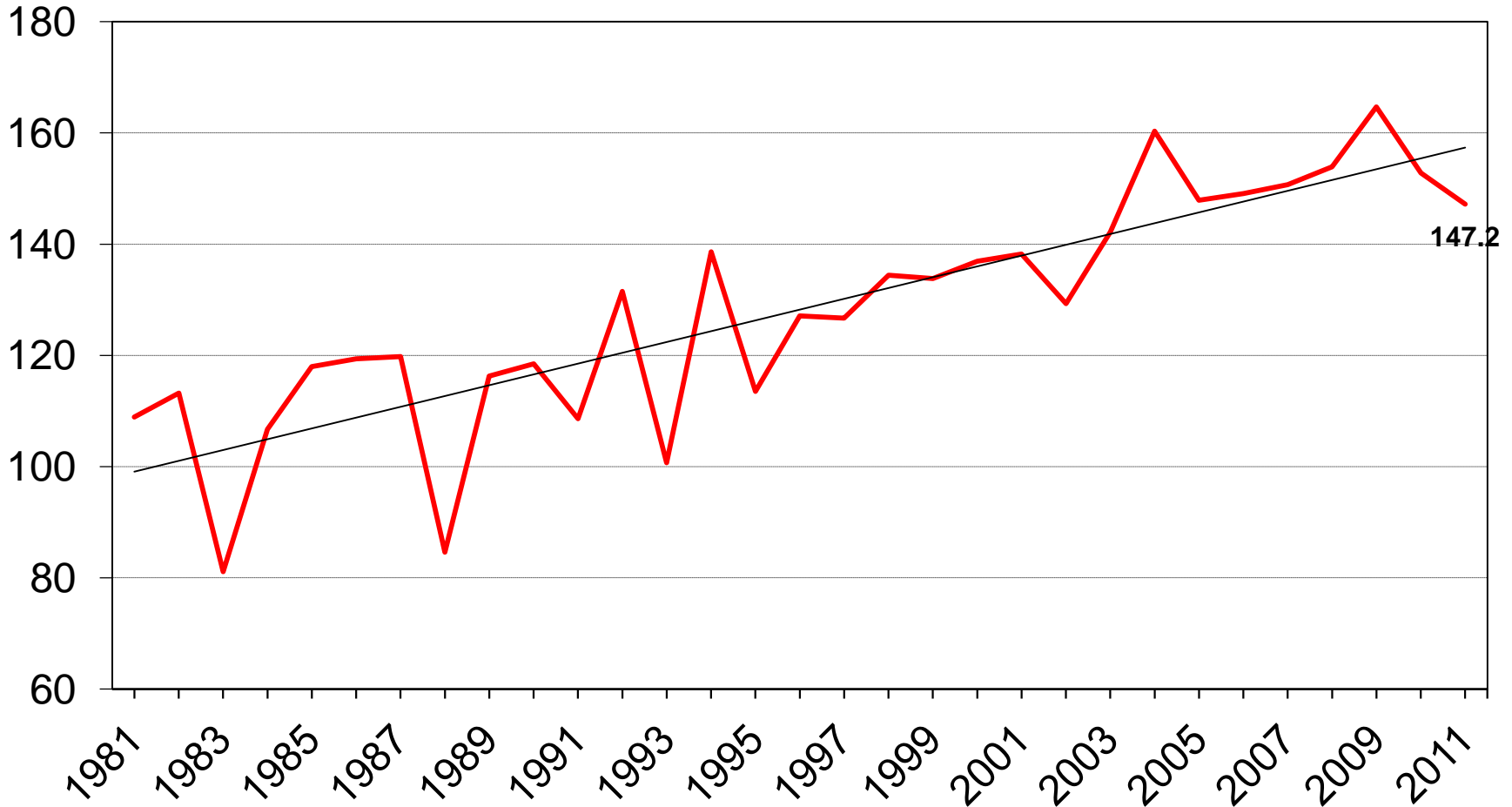
Crop	Unit	2011	% Change from Previous Forecast	% Change from Previous Season
<b>Corn</b>				
Planted	Mil Ac	91.9	+ <0.1	+ 4.2
Harvested	Mil Ac	84.0	+ <0.1	+ 3.1
Yield	Bu/Ac	147.2	+ 0.3	- 3.7
Production	Bil Bu	12.4	+ 0.4	- 0.7
Dec Stocks	Bil Bu	9.64	---	- 4.1



# U.S. Corn Yield



Bushels/acre

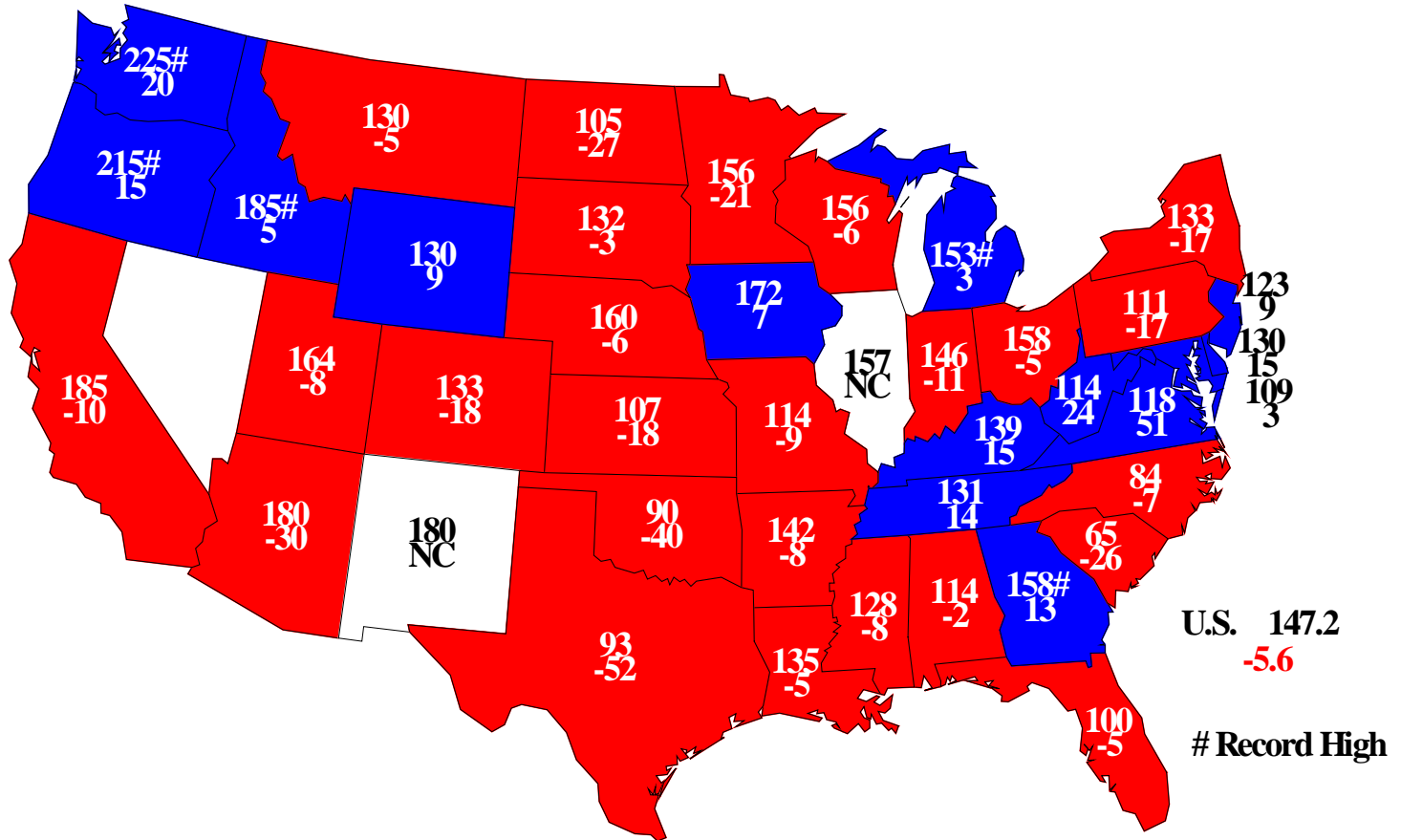






# Corn for Grain Yields, 2011

## Bushels and Change From Previous Year

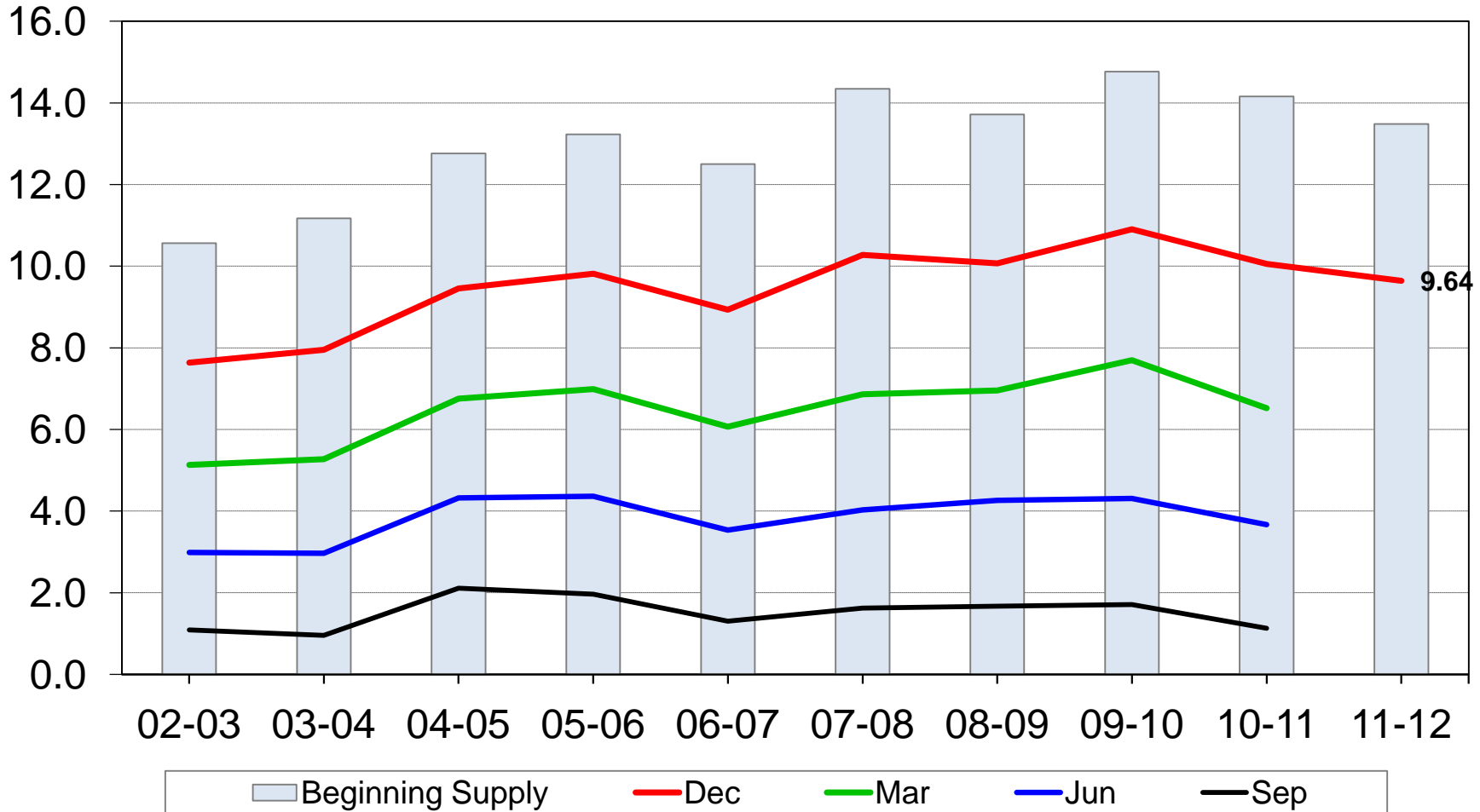




# U.S. Corn Stocks



Billion bushels





# Crop Production 2011 Annual

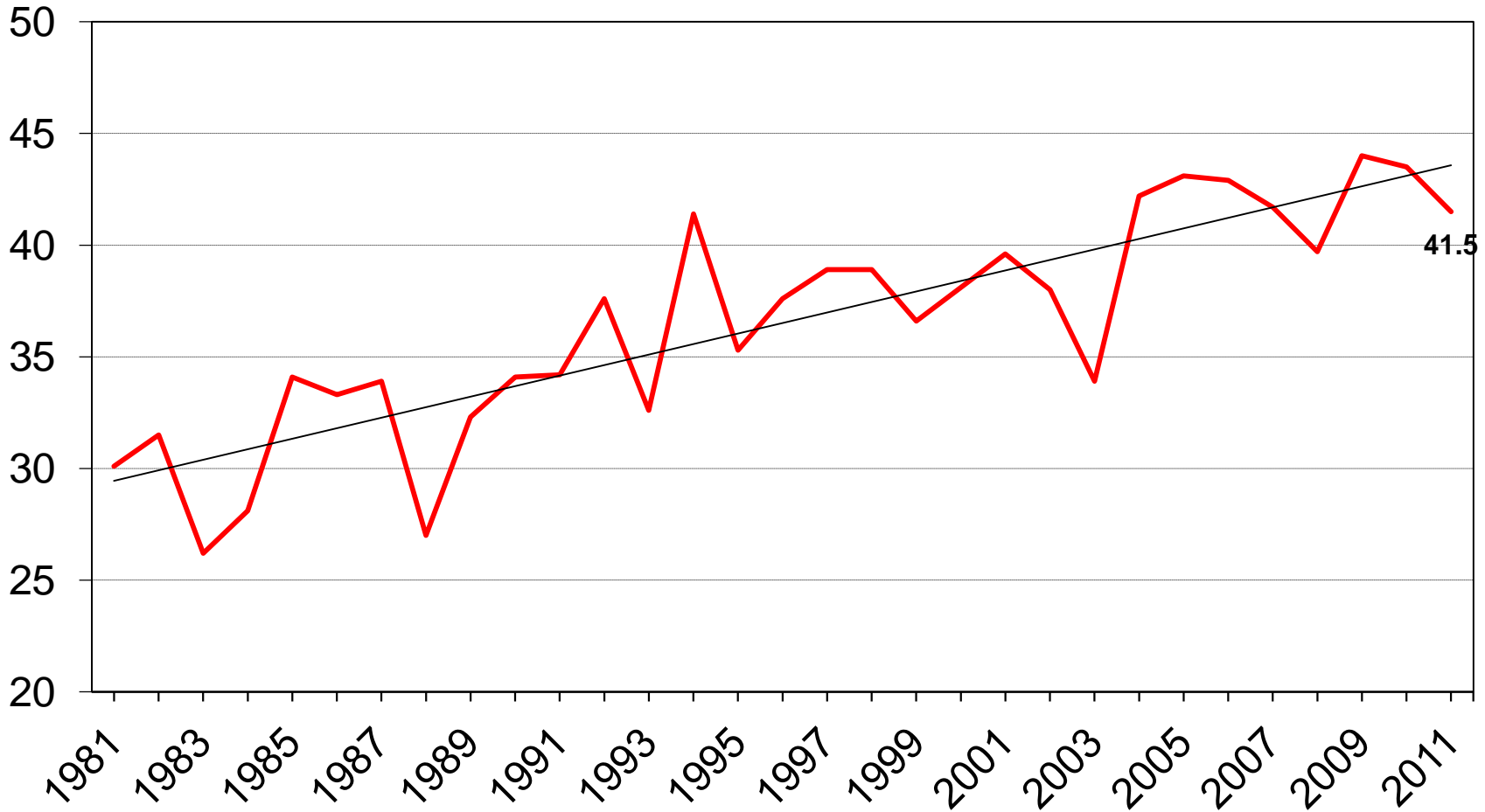
Crop	Unit	2011	% Change from Previous Forecast	% Change from Previous Season
<b>Soybeans</b>				
Planted	Mil Ac	75.0	+ <0.1	- 3.1
Harvested	Mil Ac	73.6	- <0.1	- 3.9
Yield	Bu/Ac	41.5	+ 0.5	- 4.6
Production	Bil Bu	3.06	+ 0.3	- 8.2
Dec Stocks	Bil Bu	2.37	---	+ 3.8



# U.S. Soybean Yield



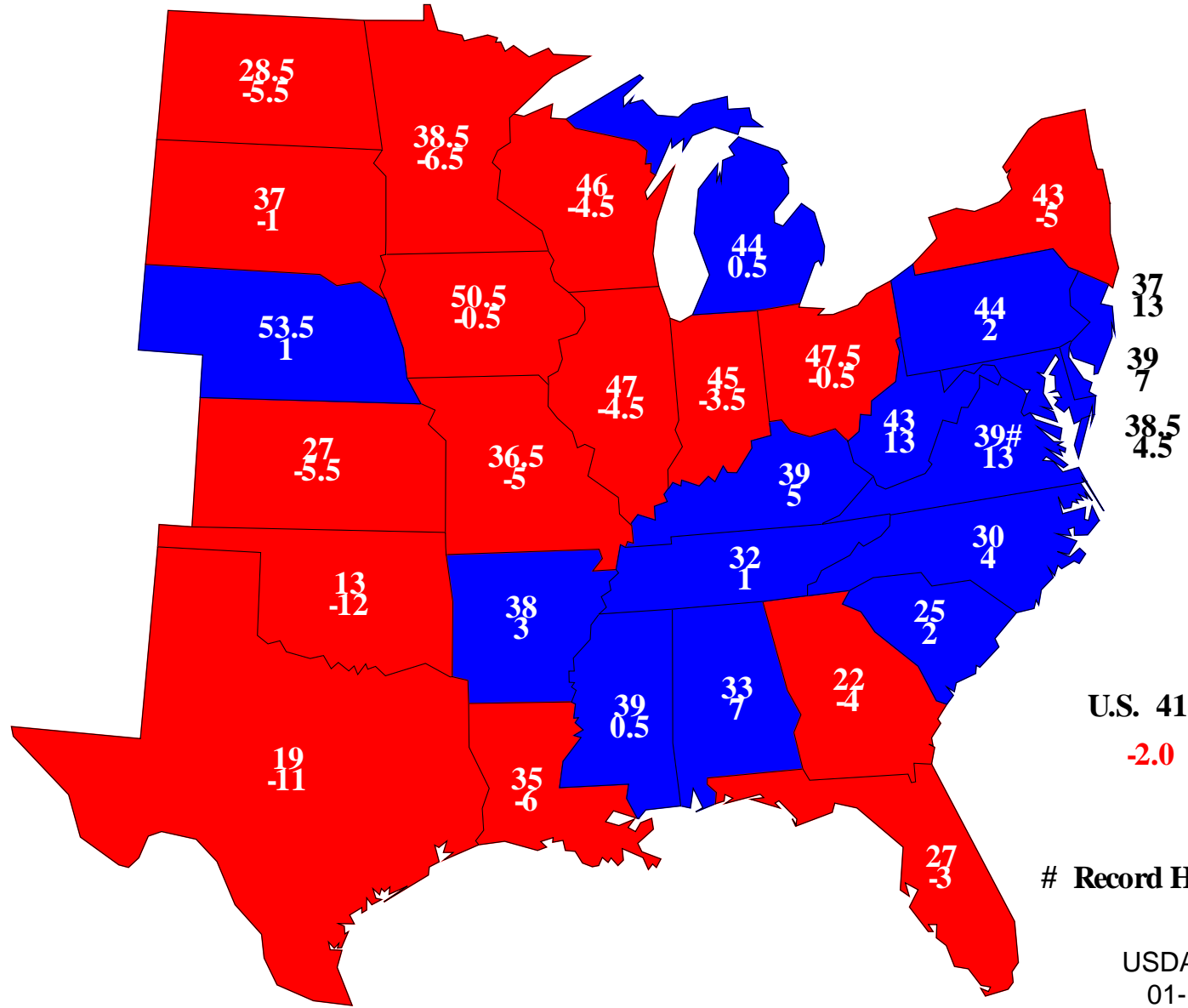
Bushels/acre





# Soybean Yields, 2011

## Bushels and Change From Previous Year



U.S. 41.5  
-2.0

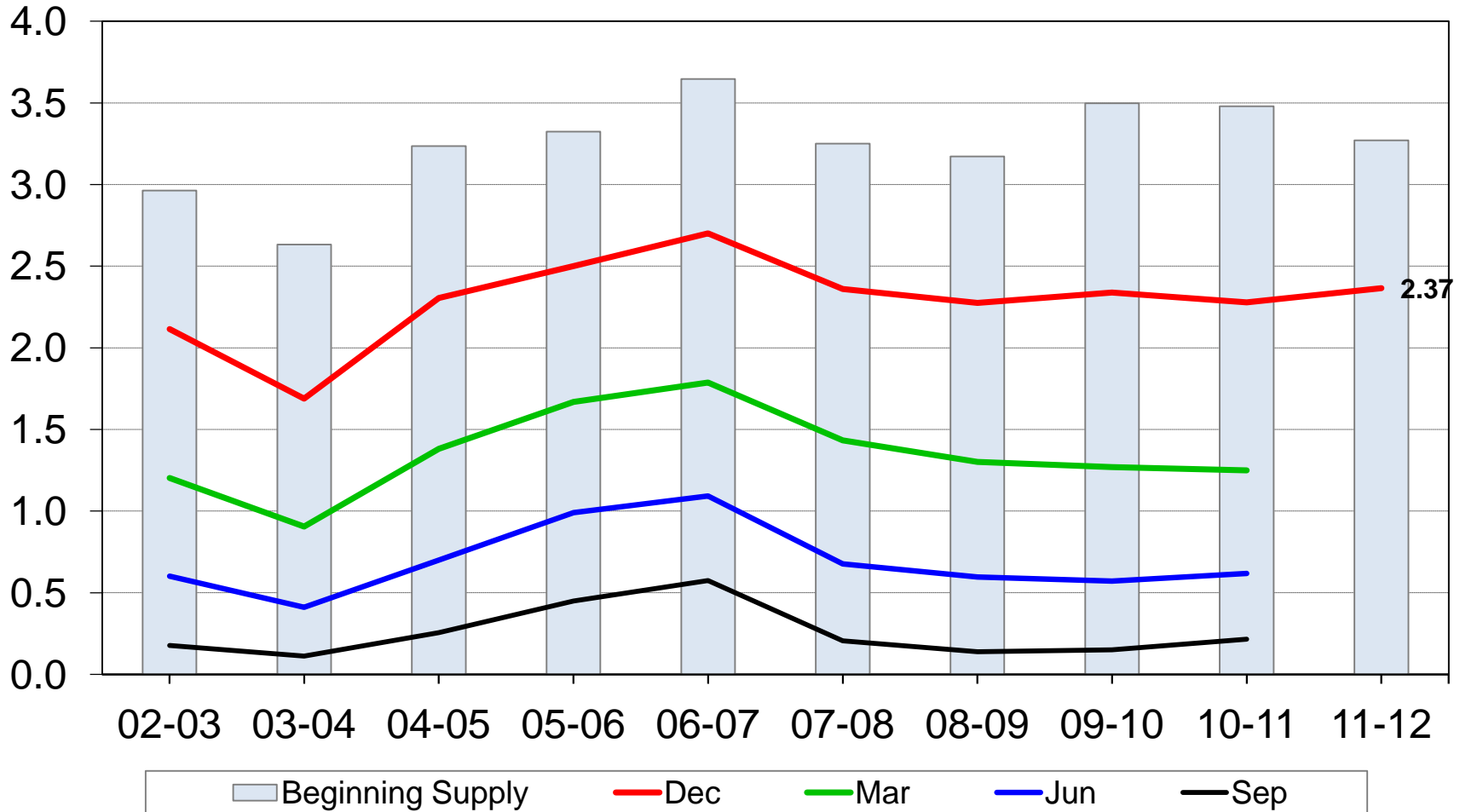
# Record High



# U.S. Soybean Stocks



Billion bushels





# Crop Production 2011 Annual

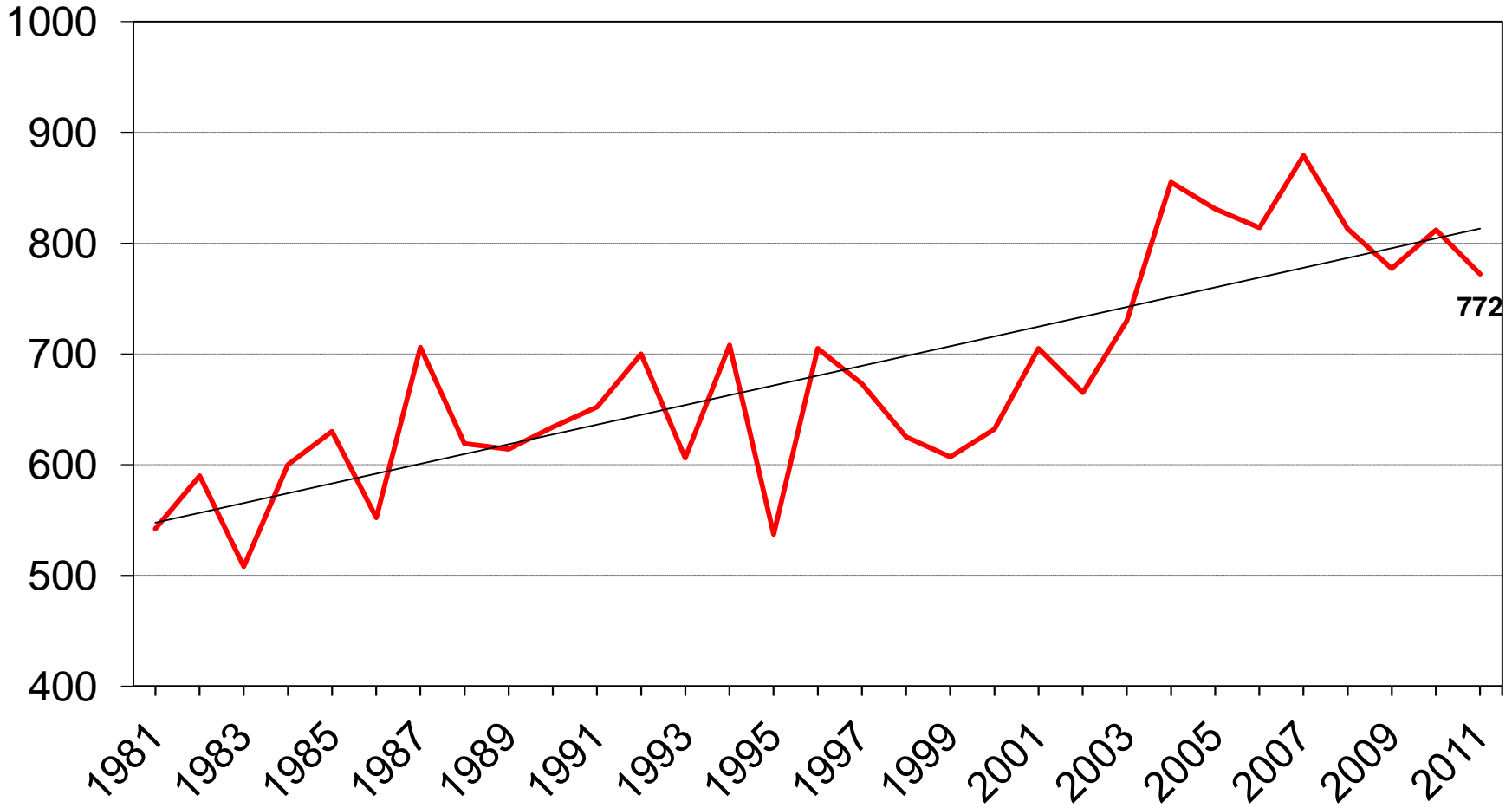
Crop	Unit	2011	% Change from Previous Forecast	% Change from Previous Season
<b>All Cotton</b>				
Planted	Mil Ac	14.7	+ 0.1	+ 34.2
Harvested	Mil Ac	9.75	- 1.0	- 8.9
Yield	Lbs/Ac	772	+ 0.1	- 4.9
Production	Mil Bales	15.7	- 1.0	- 13.4



# U.S. All Cotton Yield



Pounds/acre

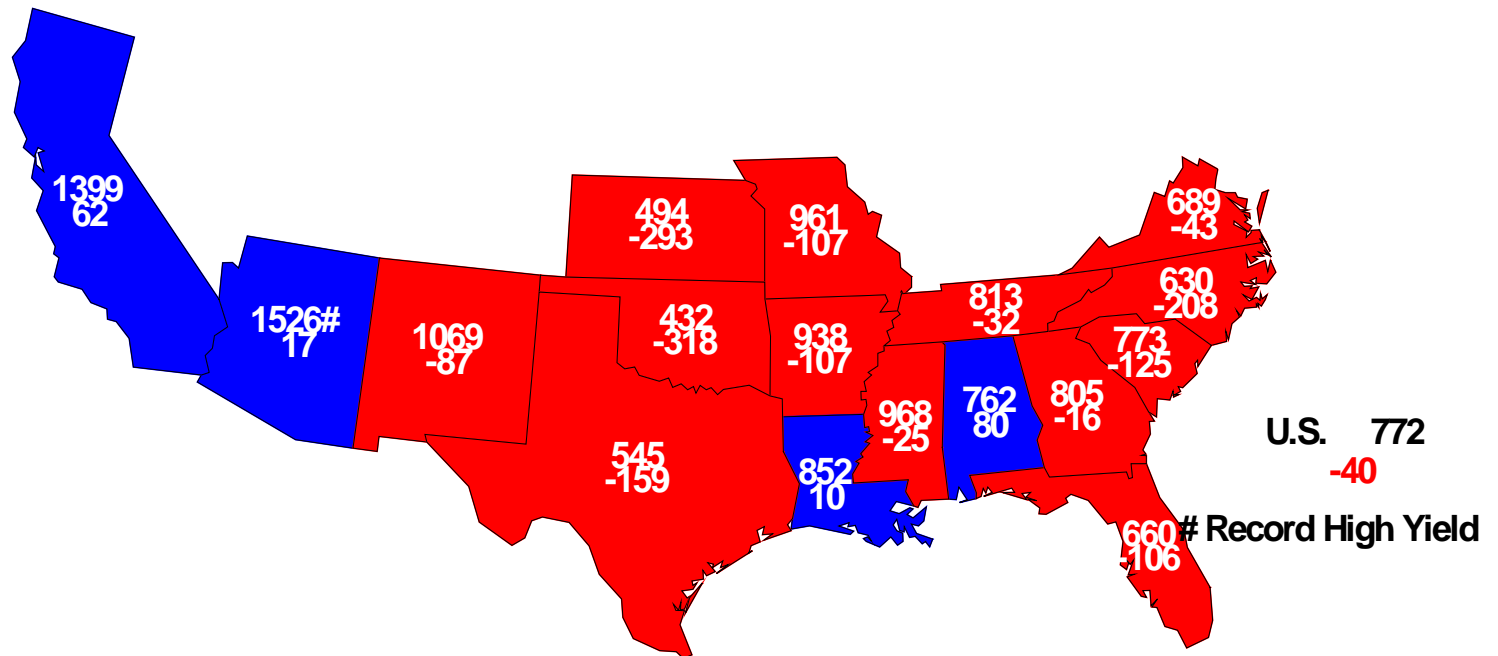






# All Cotton Yield, 2011

## Pounds and Change From Previous Year





# Crop Production 2011 Annual

Crop	Unit	2011	% Change from Previous Forecast	% Change from Previous Season
<b>Sorghum</b>				
Planted	Mil Ac	5.48	+ 0.3	+ 1.4
Harvested	Mil Ac	3.93	- 11.3	- 18.4
Yield	Bu/Ac	54.6	- 1.6	- 24.0
Production	Mil Bu	214	- 12.8	- 38.0
Dec Stocks	Mil Bu	150	---	- 37.0



# Crop Production 2011 Annual

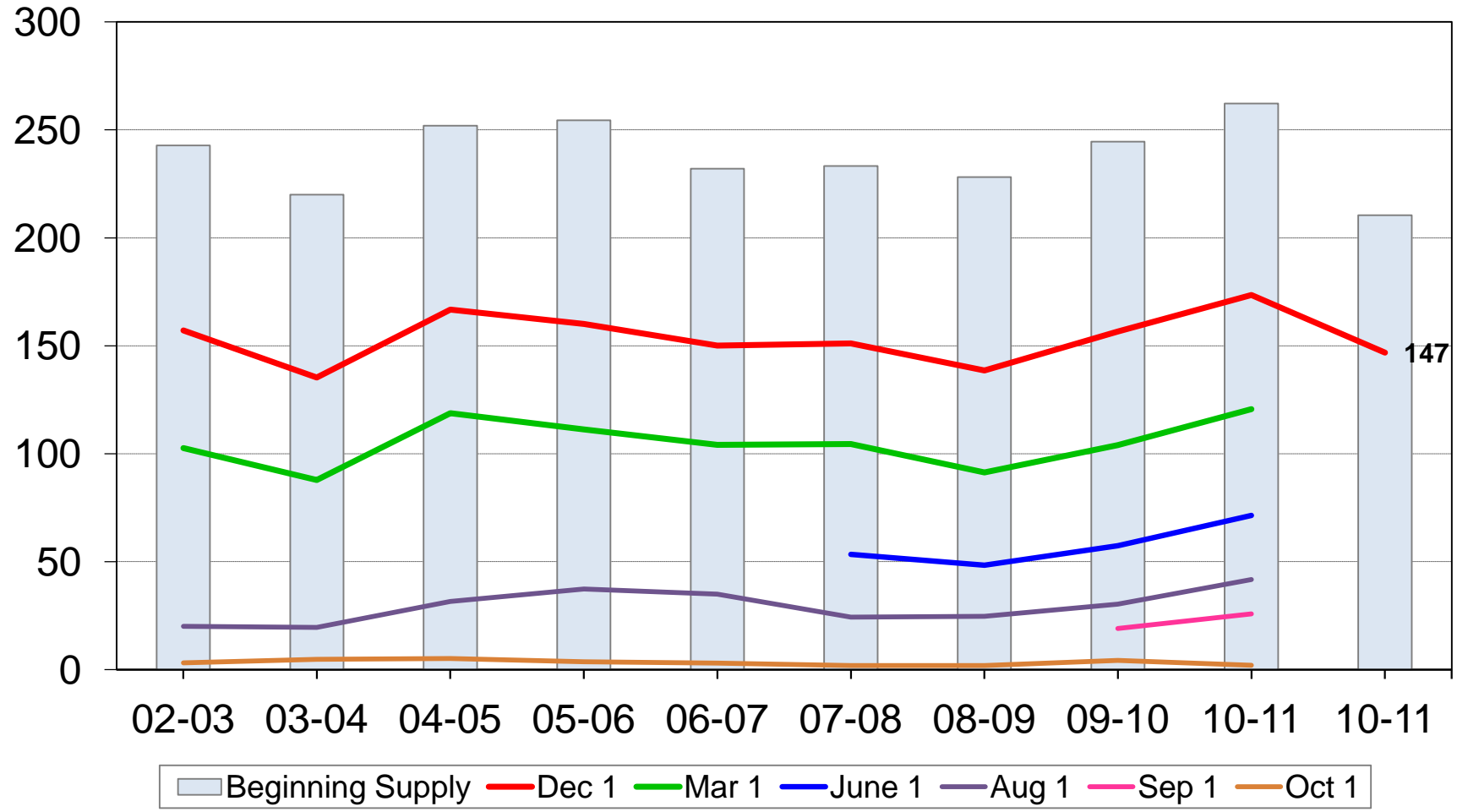
Crop	Unit	2011	% Change from Previous Forecast	% Change from Previous Season
<b>Rice</b>				
Planted	Mil Ac	2.69	- 0.1	- 26.0
Harvested	Mil Ac	2.62	- 0.2	- 27.6
Yield	Lbs/Ac	7,067	- 1.4	+ 5.1
Production	Mil Cwt	185	- 1.6	- 23.9
Dec Stocks	Mil Cwt	147	---	- 15.3



# U.S. Rough Rice Stocks



Million cwt





# All Wheat Stocks

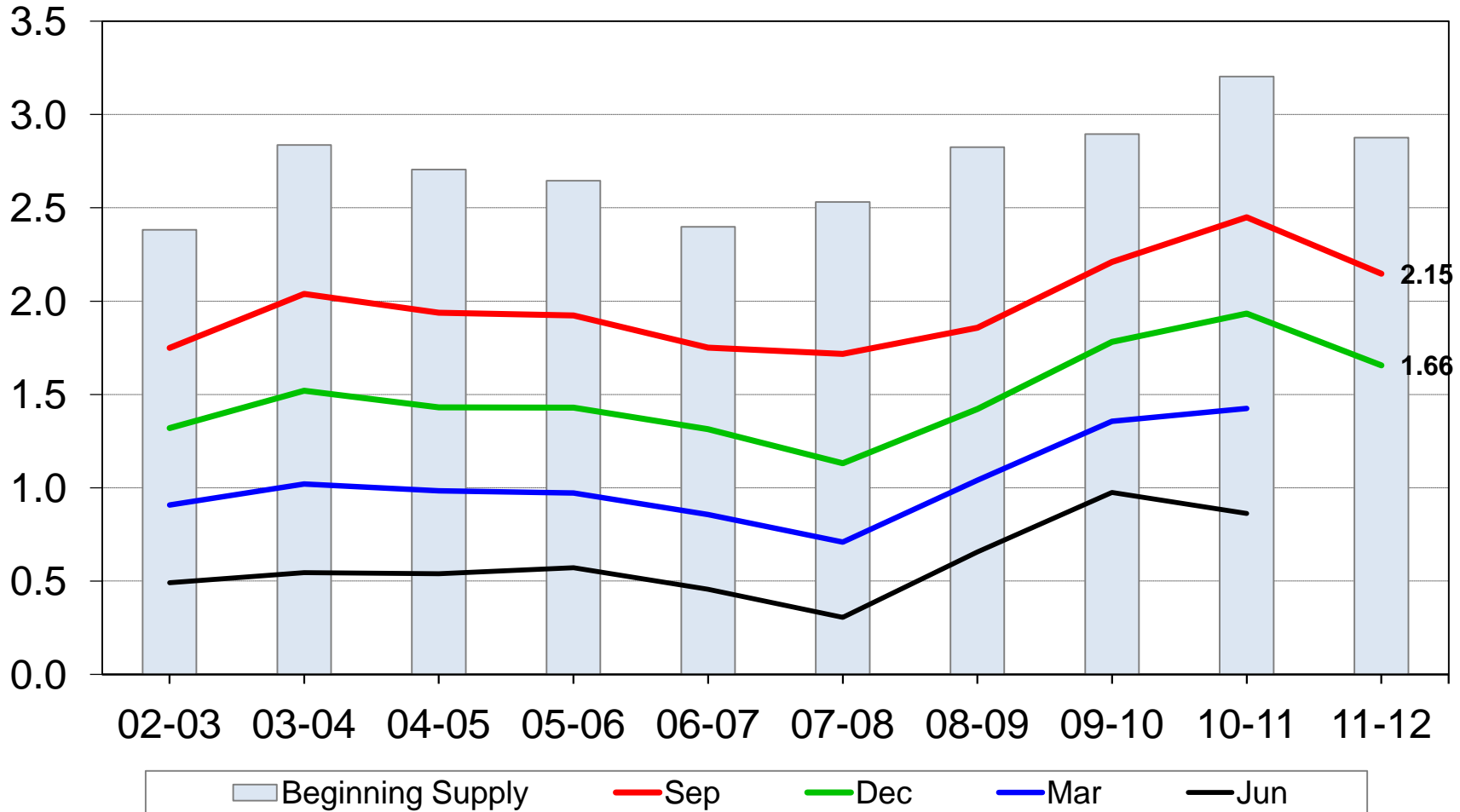
<b>Crop</b>	<b>Unit</b>	<b>2011</b>	<b>% Change from Previous Forecast</b>	<b>% Change from Previous Season</b>
<b>All Wheat</b>				
<b>Dec Stocks</b>	<b>Bil Bu</b>	<b>1.66</b>	<b>---</b>	<b>- 14.3</b>



# U.S. All Wheat Stocks



Billion bushels





# Winter Wheat Seedings

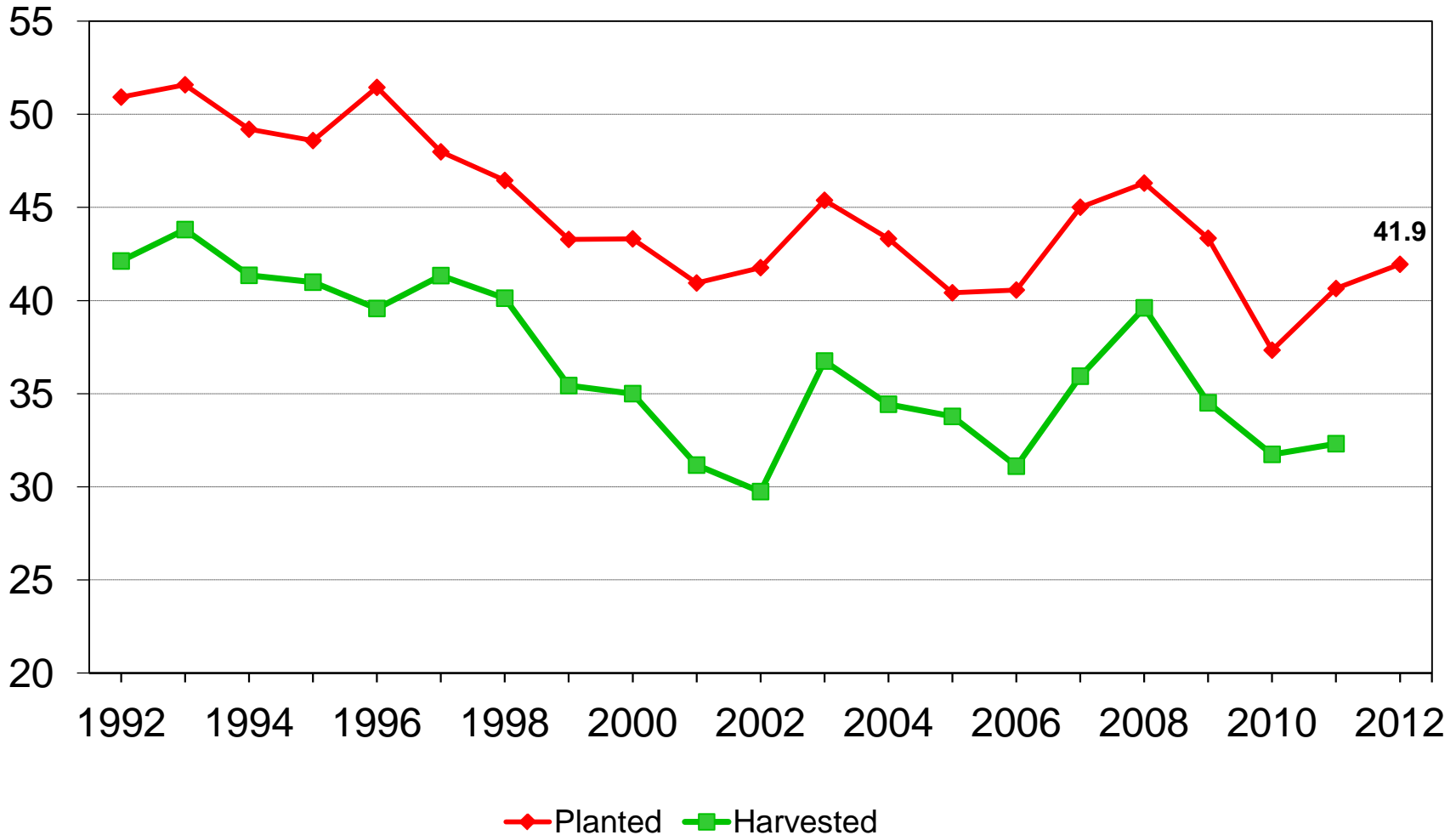
<b>Crop</b>	<b>Unit</b>	<b>2012</b>	<b>% Change from Previous Forecast</b>	<b>% Change from Previous Season</b>
<b>Winter Wheat Seedings</b>	<b>Mil Ac</b>	<b>41.9</b>	<b>---</b>	<b>+ 3.2</b>



# U.S. Winter Wheat Acres



Million acres

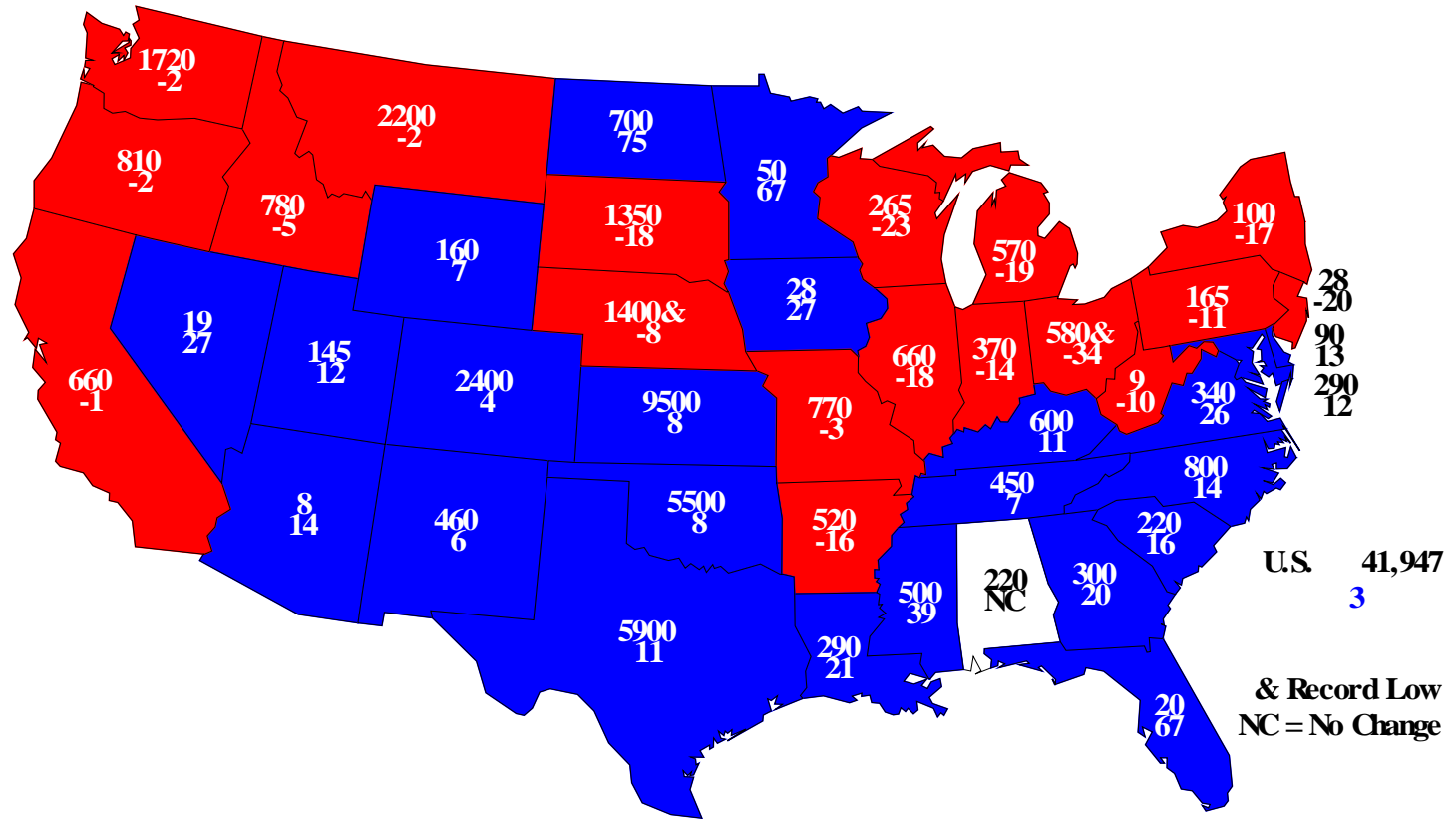






# Winter Wheat Planted, 2012

## Acres(000) and Percent Change From Previous Year





# Crop Production 2011 Annual

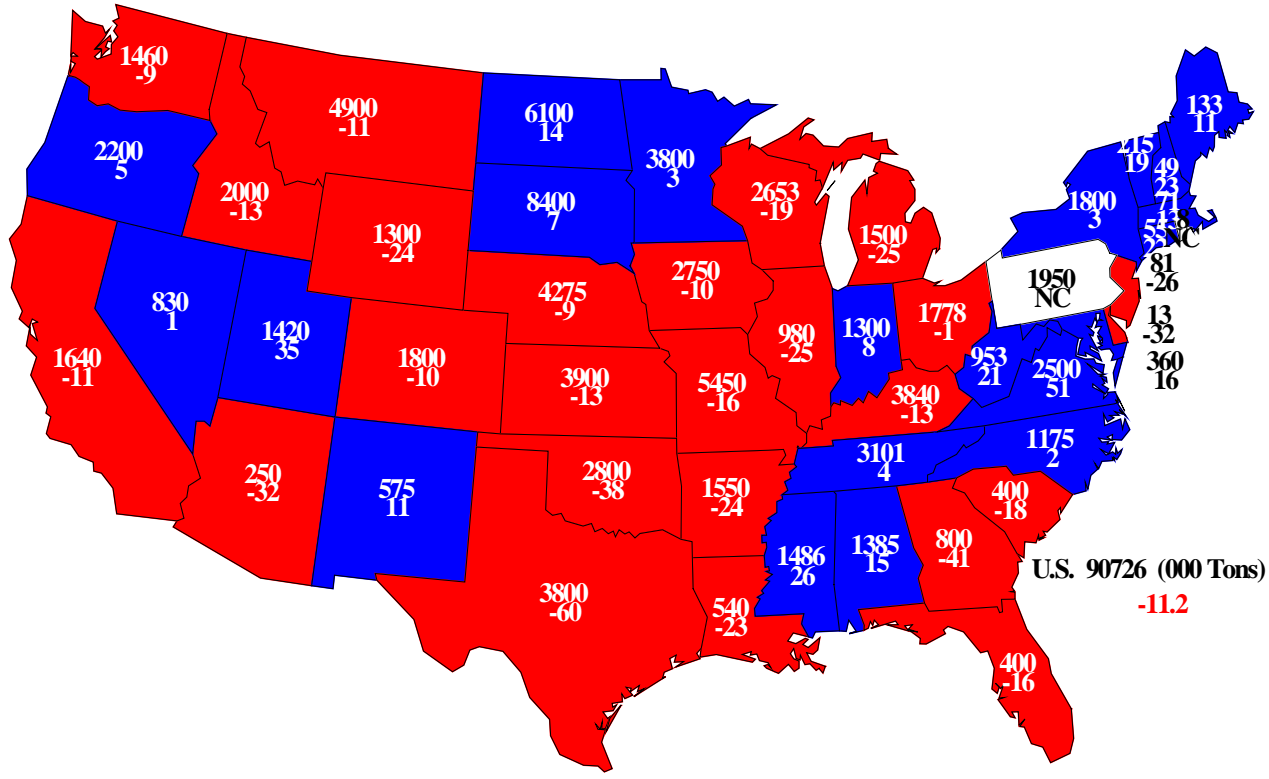
Crop	Unit	2011	% Change from Previous Forecast	% Change from Previous Season
<b>All Hay</b>				
Harvested	Mil Ac	55.6	- 3.4	- 7.1
Yield	Tons/Ac	2.36	+ 3.1	- 2.9
Production	Mil Tons	131	- 0.4	- 9.9
Dec Stocks	Mil Tons	90.7	---	- 11.2



# 2011 All Hay Stocks



## Stocks (000) and Percent Change From Previous Year



U.S. 90726 (000 Tons)  
-11.2



# Crop Production 2011 Annual

<b>Crop</b>	<b>Unit</b>	<b>2011</b>	<b>% Change from Previous Forecast</b>	<b>% Change from Previous Season</b>
<b>Sugarcane</b>	<b>Mil Tons</b>	<b>28.3</b>	<b>- 1.0</b>	<b>+ 3.4</b>
<b>Sugarbeets</b>	<b>Mil Tons</b>	<b>28.8</b>	<b>- 0.2</b>	<b>- 10.1</b>
<b>Peanuts</b>	<b>Bil Lbs</b>	<b>3.64</b>	<b>- 0.3</b>	<b>- 12.5</b>
<b>Sunflowers</b>	<b>Bil Lbs</b>	<b>2.04</b>	<b>- 2.5</b>	<b>- 25.5</b>
<b>Canola</b>	<b>Bil Lbs</b>	<b>1.54</b>	<b>+ 0.4</b>	<b>- 37.2</b>



# Crop Production 2011 Annual

<b>Crop</b>	<b>Unit</b>	<b>2011</b>	<b>% Change from Previous Forecast</b>	<b>% Change from Previous Season</b>
<b>Mustard Seed</b>	<b>Mil Lbs</b>	<b>15.6</b>	<b>---</b>	<b>- 62.6</b>
<b>Safflower</b>	<b>Mil Lbs</b>	<b>170</b>	<b>---</b>	<b>- 23.3</b>
<b>Flaxseed</b>	<b>Mil Bu</b>	<b>2.79</b>	<b>---</b>	<b>- 69.2</b>
<b>Rapeseed</b>	<b>Mil Lbs</b>	<b>2.83</b>	<b>---</b>	<b>- 32.0</b>
<b>Proso Millet</b>	<b>Mil Bu</b>	<b>9.15</b>	<b>---</b>	<b>- 20.7</b>



# Crop Production 2011 Annual

Crop	Unit	2011	% Change from Previous Forecast	% Change from Previous Season
Dry Edible Beans	Mil Cwt	19.8	+ 0.5	- 37.6
Lentils	Mil Cwt	4.73	+ 0.4	- 45.3
Peas				
Austrian Winter	Thou Cwt	180	- 9.5	- 24.1
Dry Edible	Mil Cwt	5.63	+ 4.3	- 60.4
All Potatoes	Mil Cwt	427	+ 0.2	+ 5.7
Sweet Potatoes	Mil Cwt	27.0	---	+ 13.4
Tobacco	Mil Lbs	601	- 5.8	- 16.3



# January 2012 Crop Production

Crop	Unit	January 2012	% Change from Previous Forecast	% Change from Previous Season
Oranges	Mil Tons	8.98	- 1.5	+ 1.4
Grapefruit	Mil Tons	1.15	- 1.5	- 8.7
Lemons	Thou Tons	808	- 2.9	- 14.0
Tangelos	Thou Tons	50.0	NC	- 3.8
Tangerines and Mandarins	Thou Tons	629	- 0.8	NC



United States Department of Agriculture  
**National Agricultural Statistics Service**

---

---

Upcoming Reports

Jan 25	Cotton Ginnings
Jan 26	Vegetables – Annual
Jan 27	Cattle Sheep and Goats
Jan 31	Agricultural Prices
Feb 9	Crop Production
Feb 17	Farms, Land in Farms, and Livestock Operations





United States Department of Agriculture  
**National Agricultural Statistics Service**

---

---



All Reports Available At

[www.nass.usda.gov](http://www.nass.usda.gov)

For Questions

202-720-2127

800-727-9540

[nass@nass.usda.gov](mailto:nass@nass.usda.gov)