



United States Department of Agriculture  
**National Agricultural Statistics Service**

---

---



**PROSPECTIVE PLANTINGS  
GRAIN STOCKS  
RICE STOCKS**

Executive Summary

MARCH 28, 2013

12:00 PM



# Contents

<b>Field Crops</b>	<b>Stocks</b>
Principal Crops Planted Acres	Corn
Feed Grain Acres	Soybean
Food Grain Acres	All Wheat
Oilseed Acres	Rough Rice
Other Crop Acres	

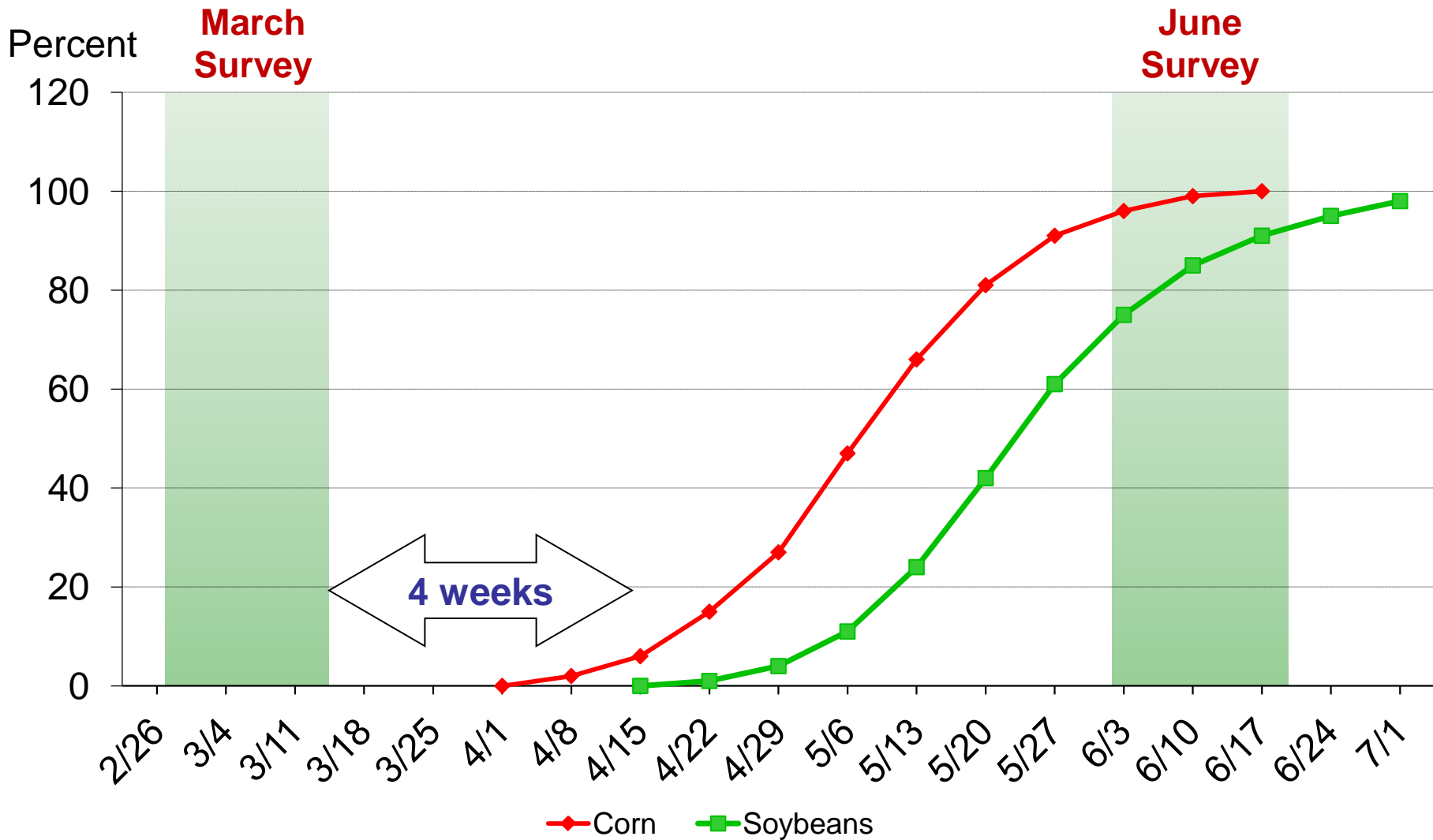


# Survey Overview

	March Ag Survey	Off-Farm Grain Stocks Survey
Survey Type	Farmer Reported	Reported
Collection Method	Mail, Phone, Internet, Personal Interview	Mail, Phone, Internet, Personal Interview
Items Collected	Acreage Intentions, On-Farm Stocks	Grains and Oilseeds On Hand
States	All except AK and HI	All except AK and HI
Sample Size	~ 84,000	~ 8,800 Facilities
Collection Period	Feb 27 – Mar 18	Feb 27 – Mar 18

# Acres Intended vs. Actual Planted Acres

## Usual Planting Progress





# U.S. Principal Crops Planted Acres

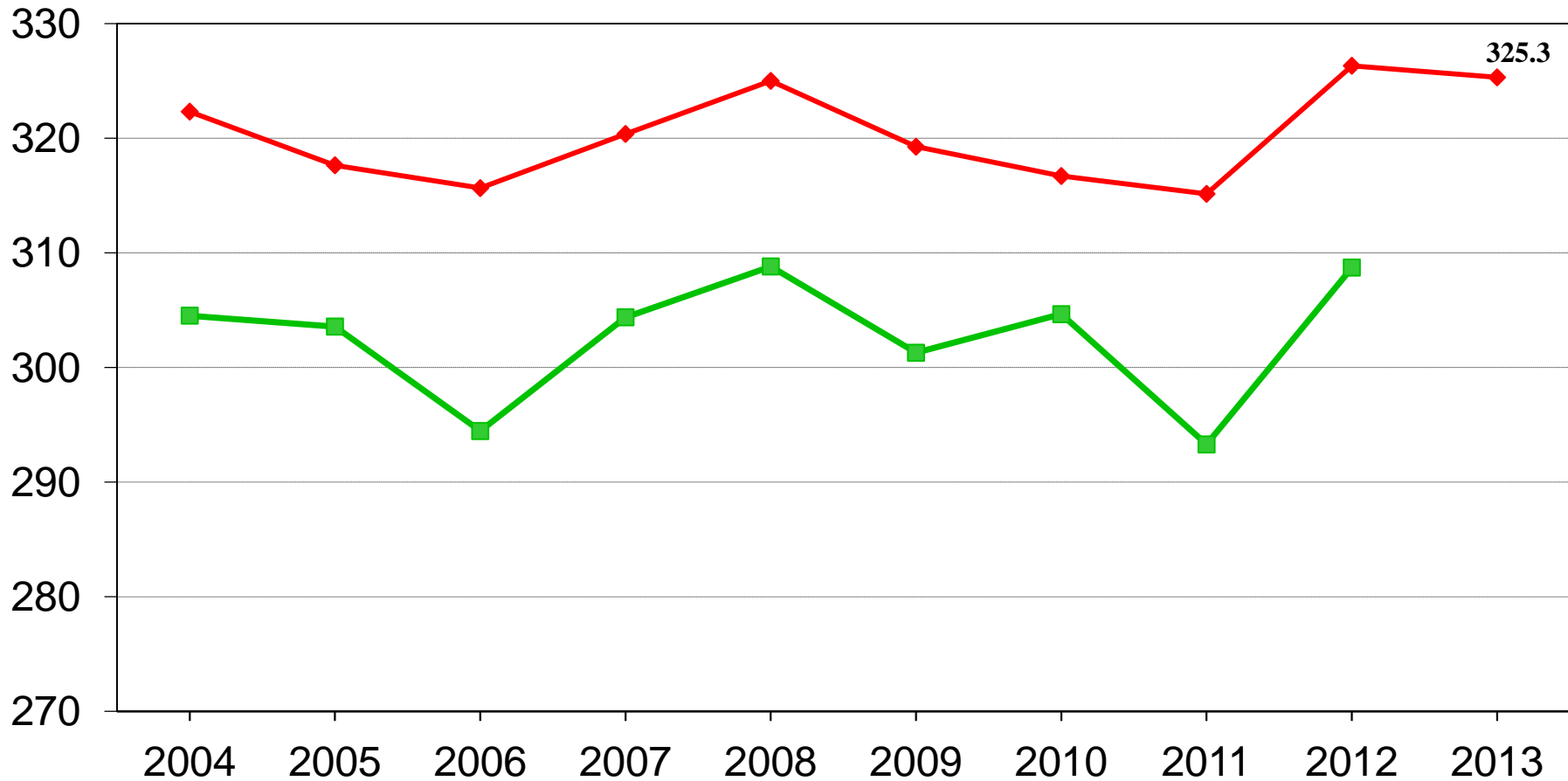
Year	Principal Crops	Change from Previous Year
<i>--Million Acres--</i>		
2004	322.3	- 3.4
2005	317.6	- 4.7
2006	315.6	- 2.0
2007	320.4	+ 4.7
2008	325.0	+ 4.6
2009	319.3	- 5.7
2010	316.7	- 2.6
2011	315.1	- 1.6
2012	326.3	+11.2
2013	325.3	- 1.0



# U.S. Principal Crop Acres



Million acres



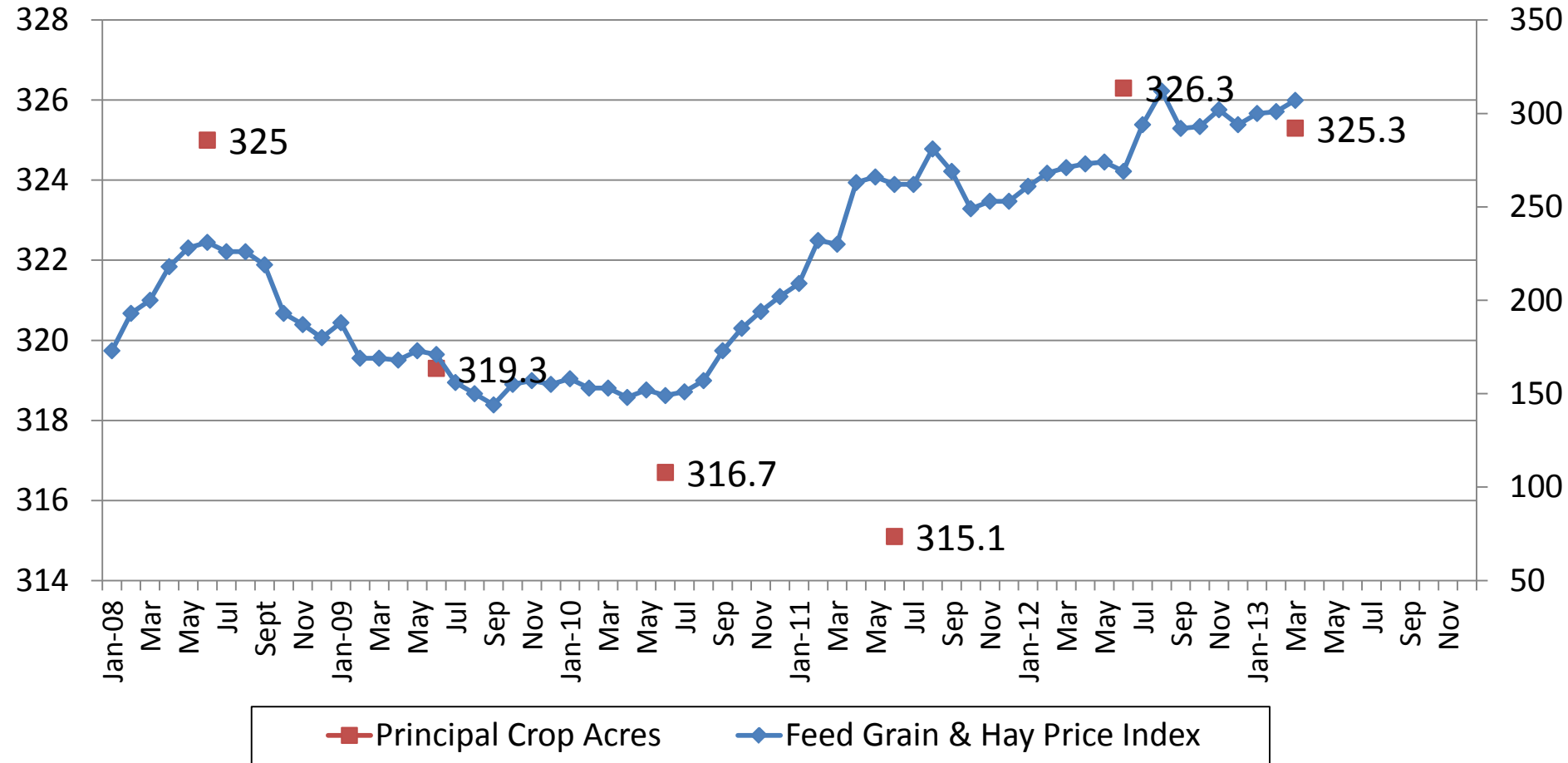
◆ Planted    ■ Harvested



# Feed Grain & Hay Price Index and Principal Crop Acres (2008-2013)

Percent  
(1990-92=100)

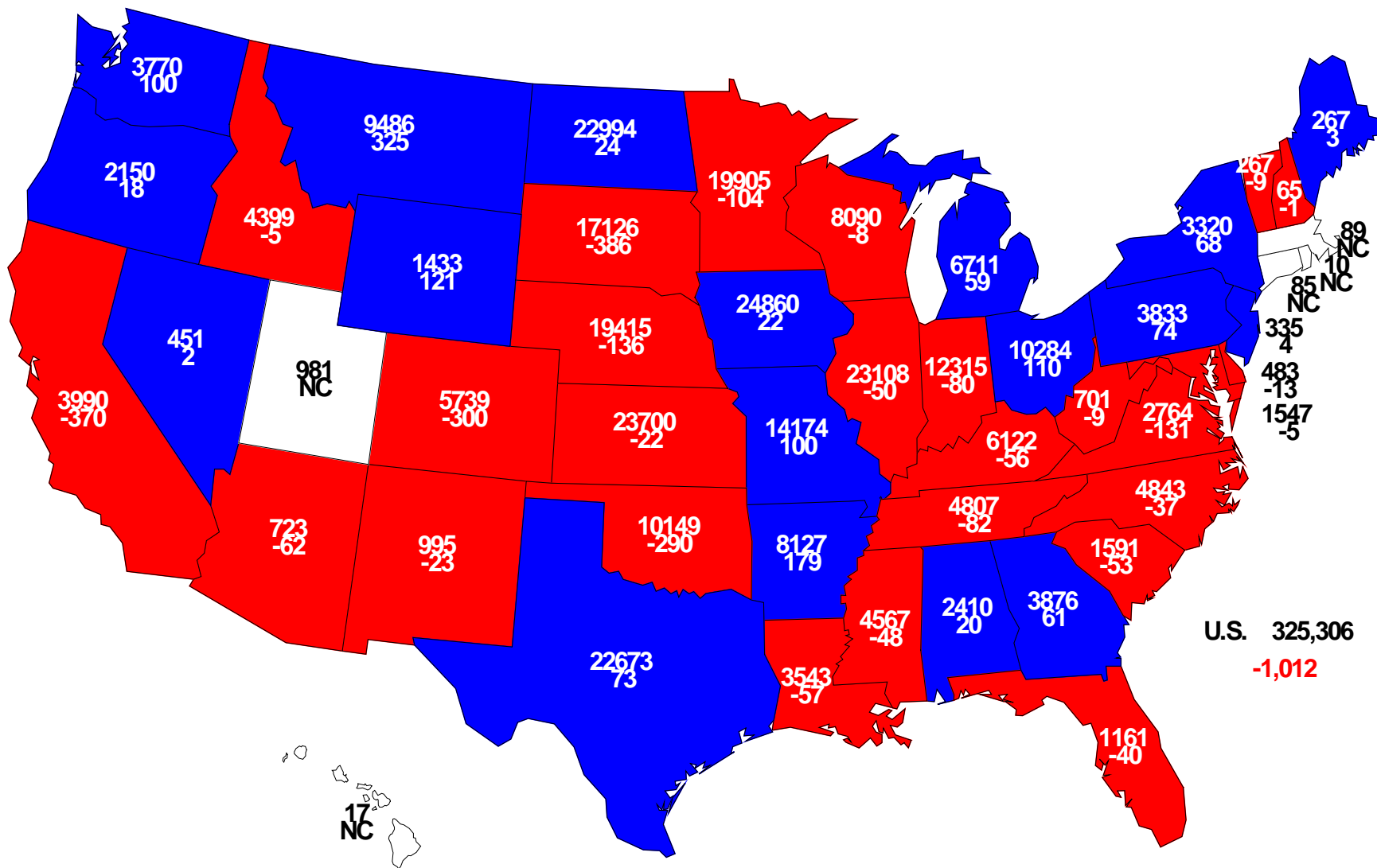
Million Acres





# 2013 Principal Crops Planted

## Acres (000) and Change From Previous Year



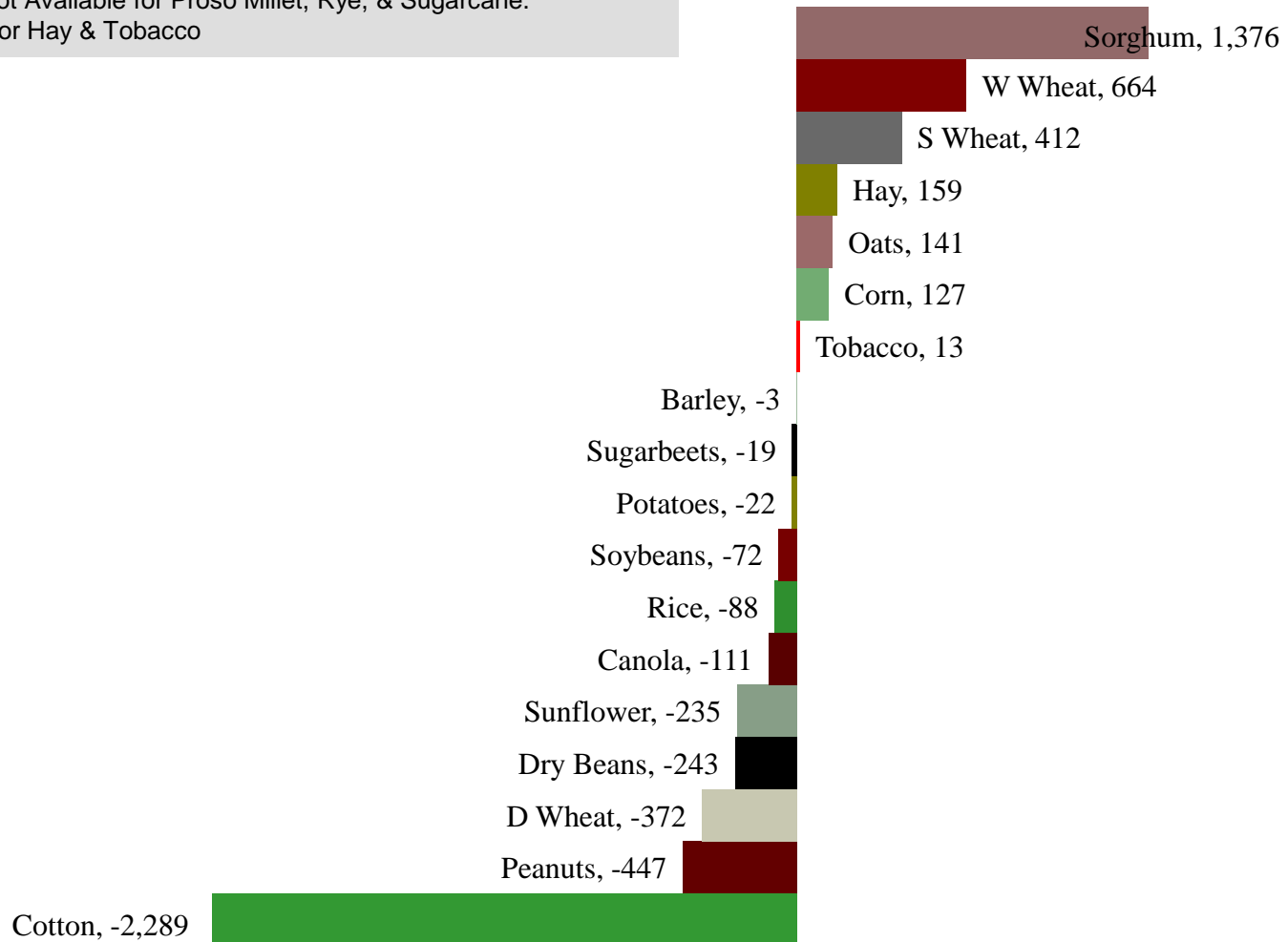




# Change in Planted Acres (000)

## 2013 Compared With 2012

2013 Estimates Not Available for Proso Millet, Rye, & Sugarcane.  
Harvested Acres for Hay & Tobacco

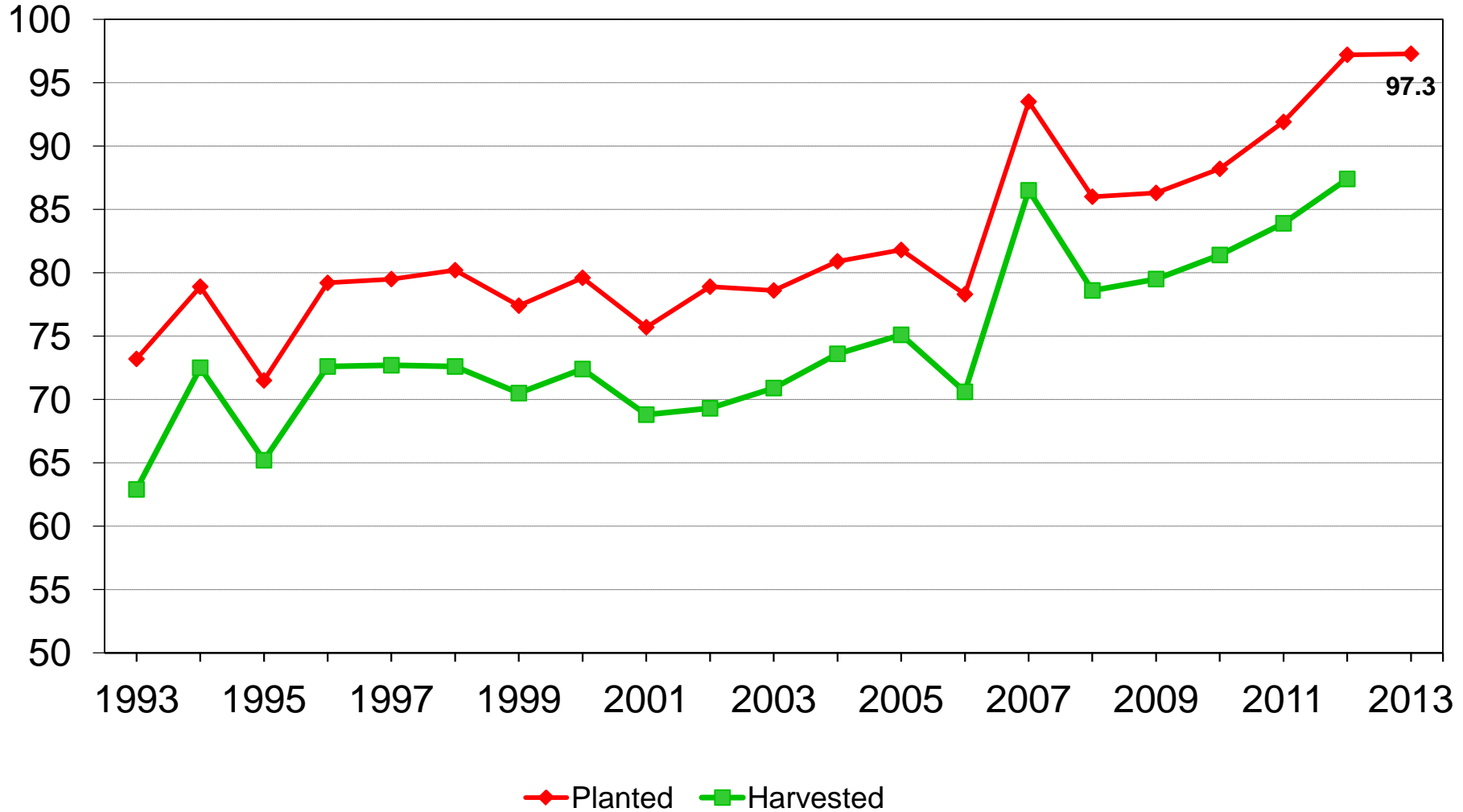




# U.S. Corn Acres



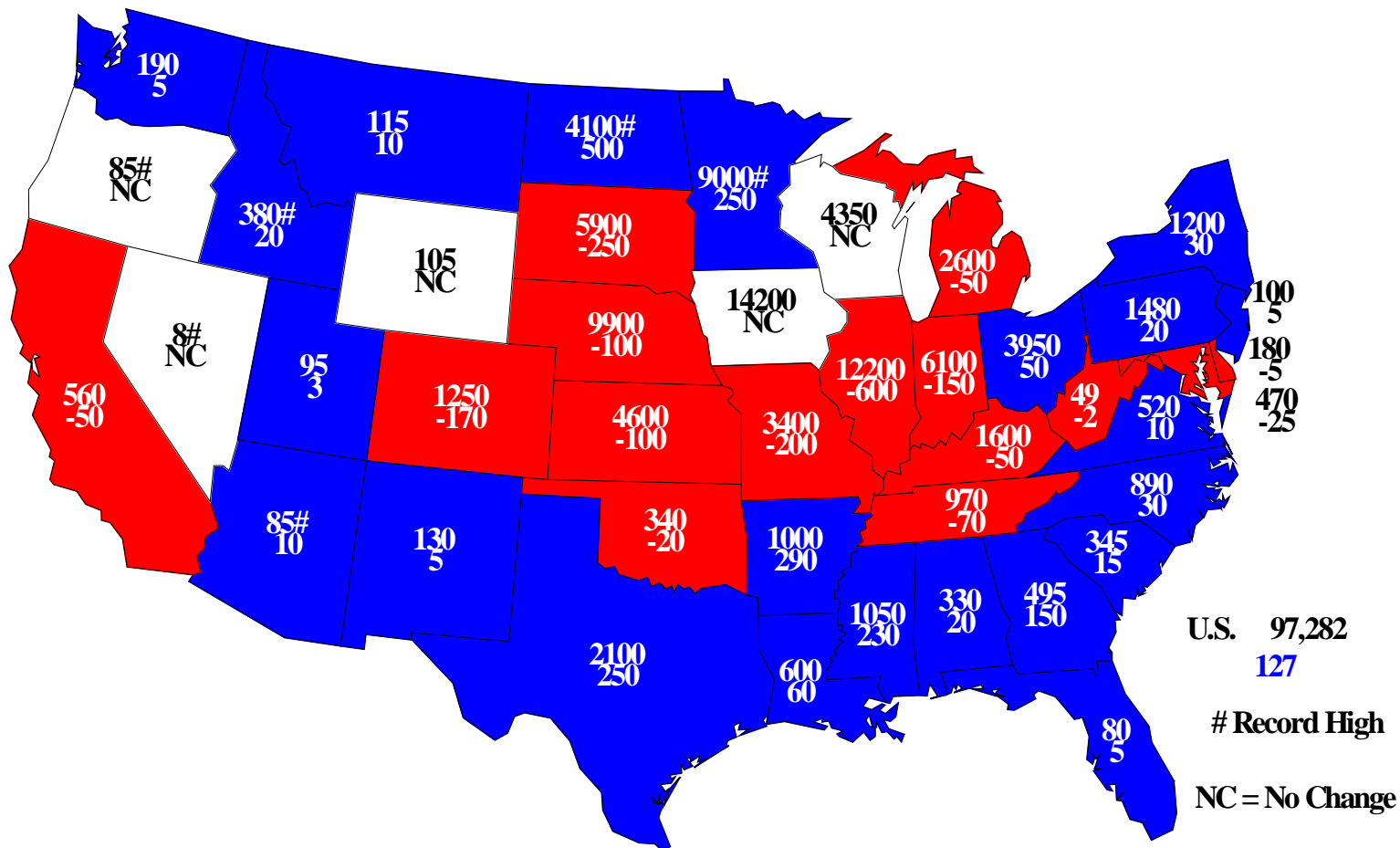
Million acres





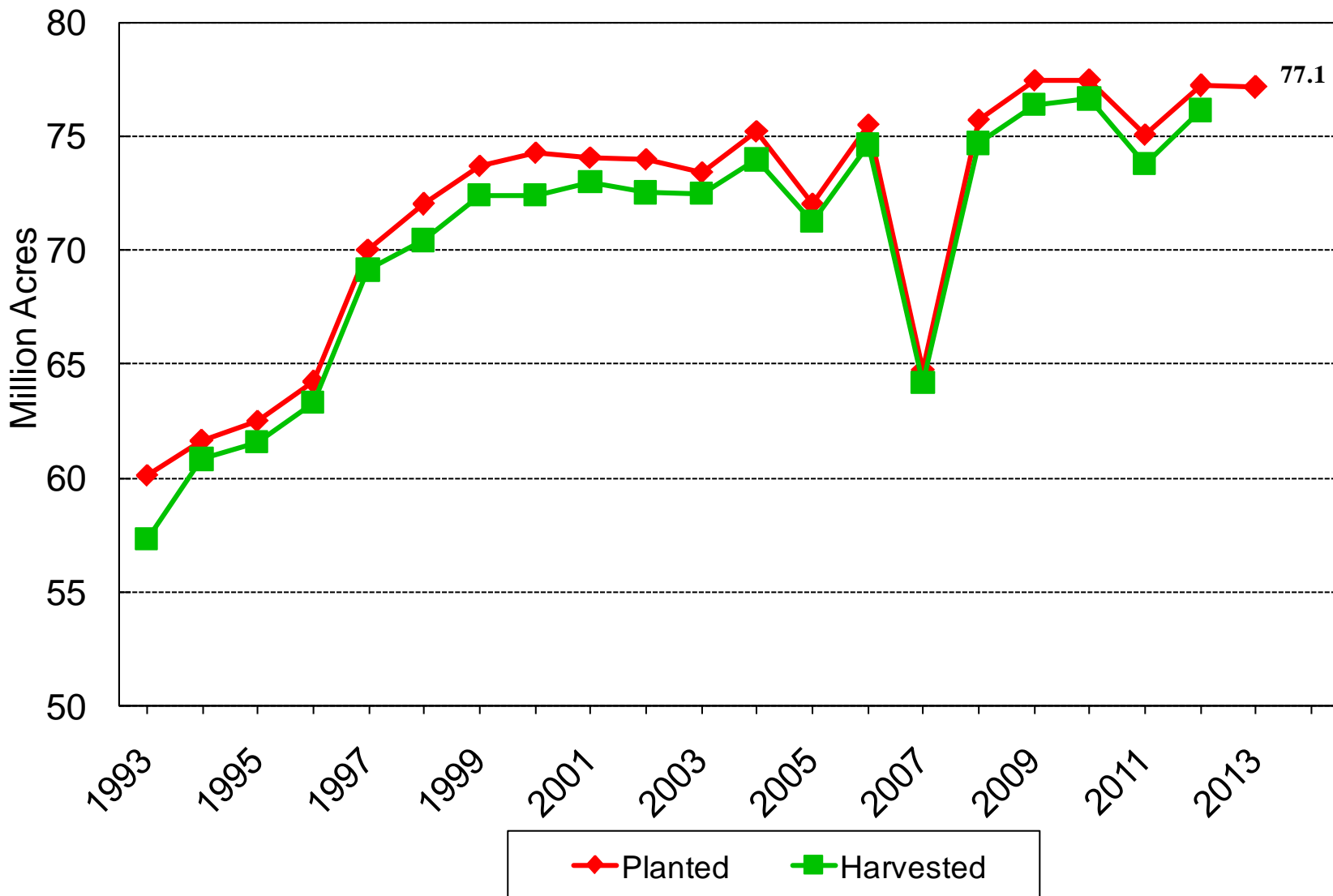
# 2013 Corn Planted

## Acres (000) and Change From Previous Year





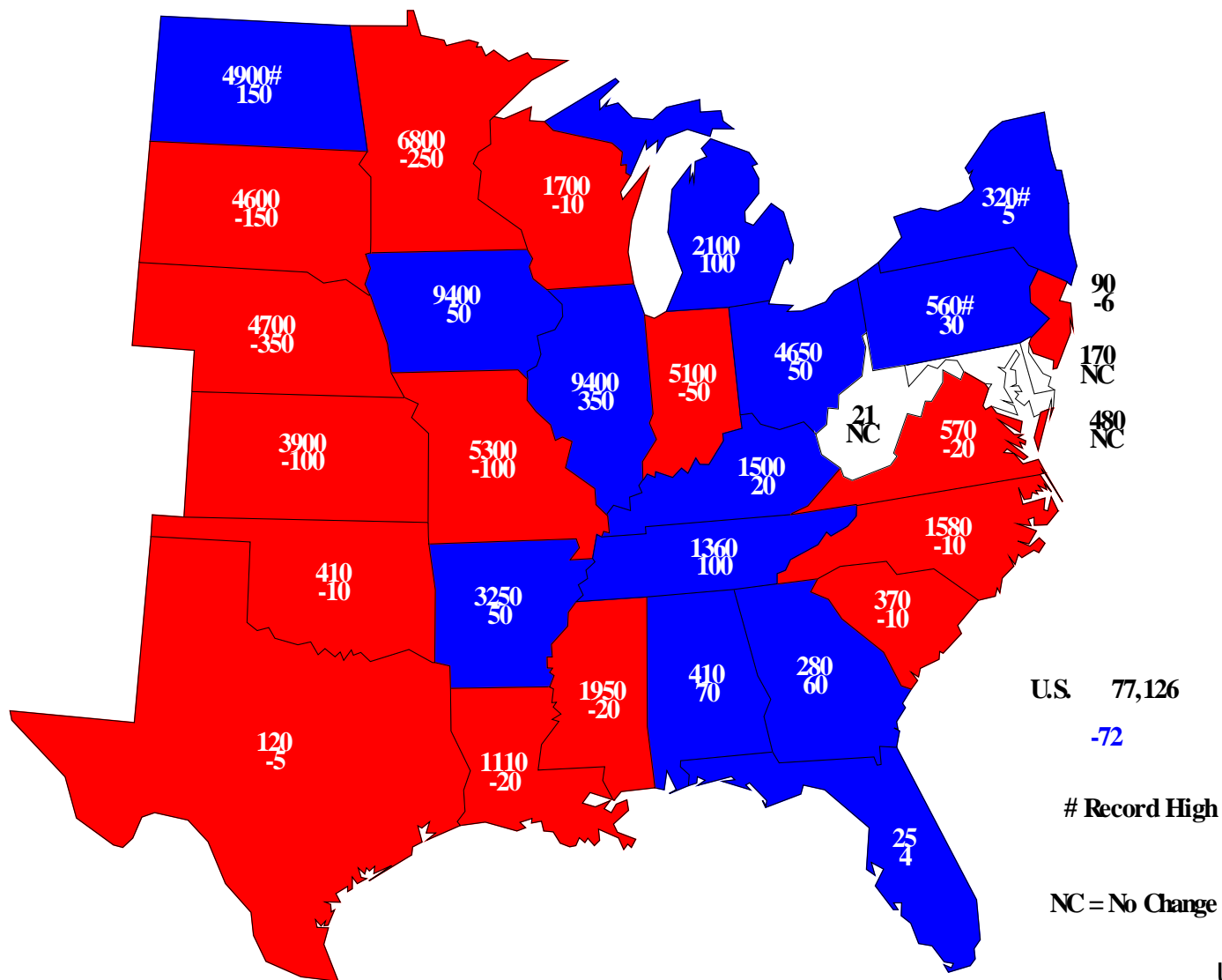
# U.S. Soybean Acres





# 2013 Soybeans Planted

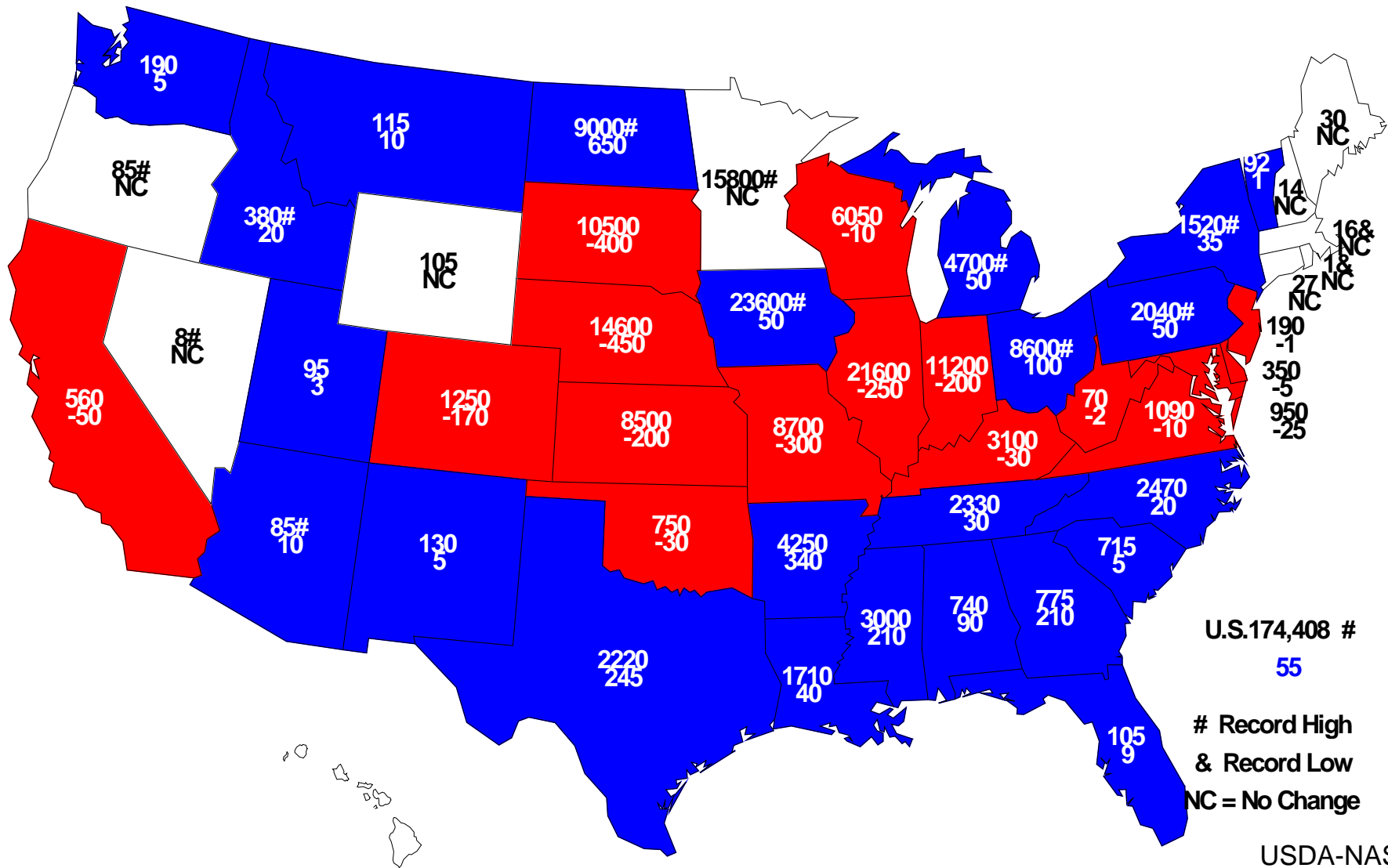
## Acres (000) and Change From Previous Year





# 2013 Combined Corn & Soybeans Planted

## Acres (000) and Change From Previous Year



U.S. 174,408 #  
55

# Record High  
& Record Low  
NC = No Change

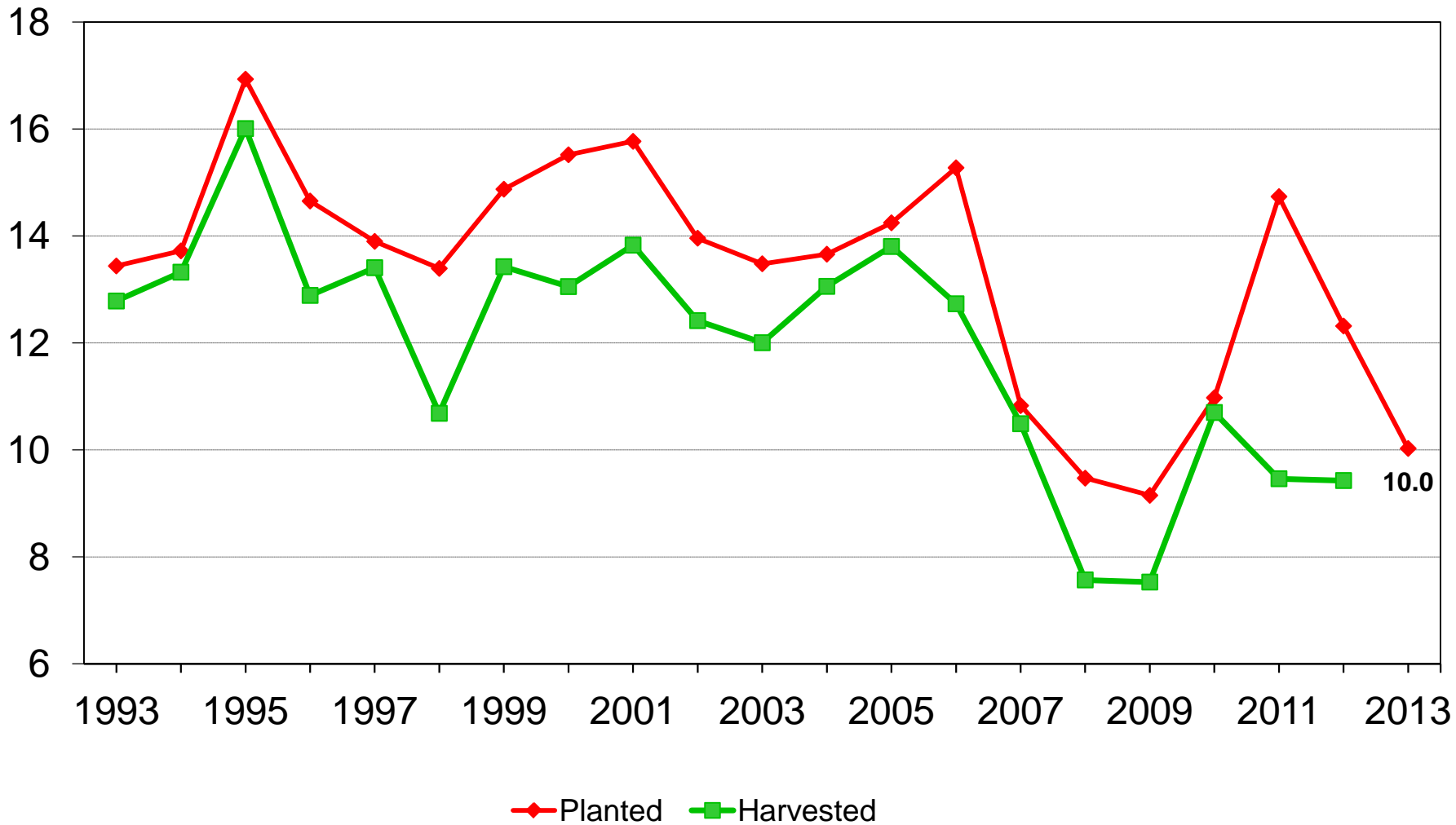
USDA-NASS  
03-28-13



# U.S. All Cotton Acres



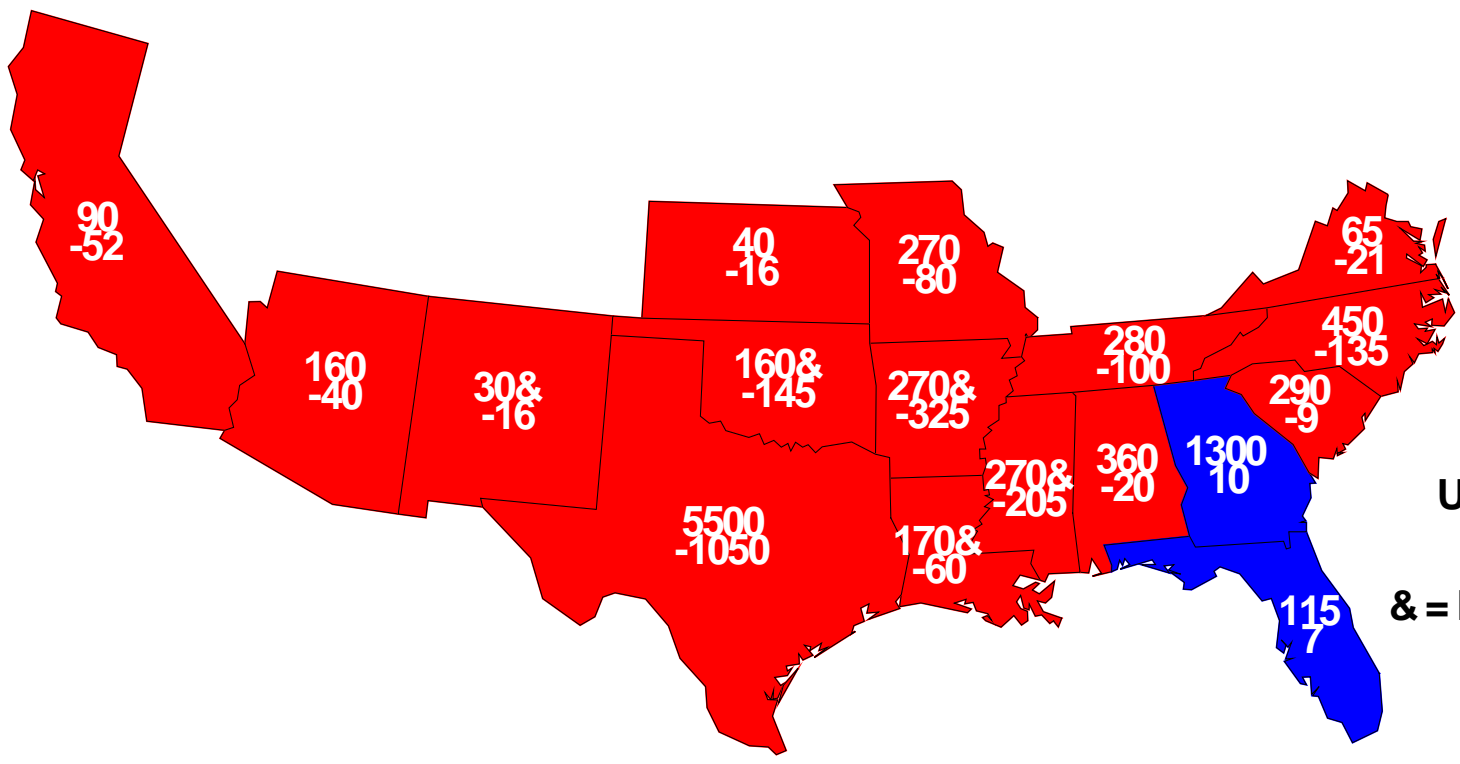
Million acres





# 2013 Upland Cotton Planted

## Acres (000) and Change From Previous Year



U.S. 9,820  
 -2,257  
 & = Record Low

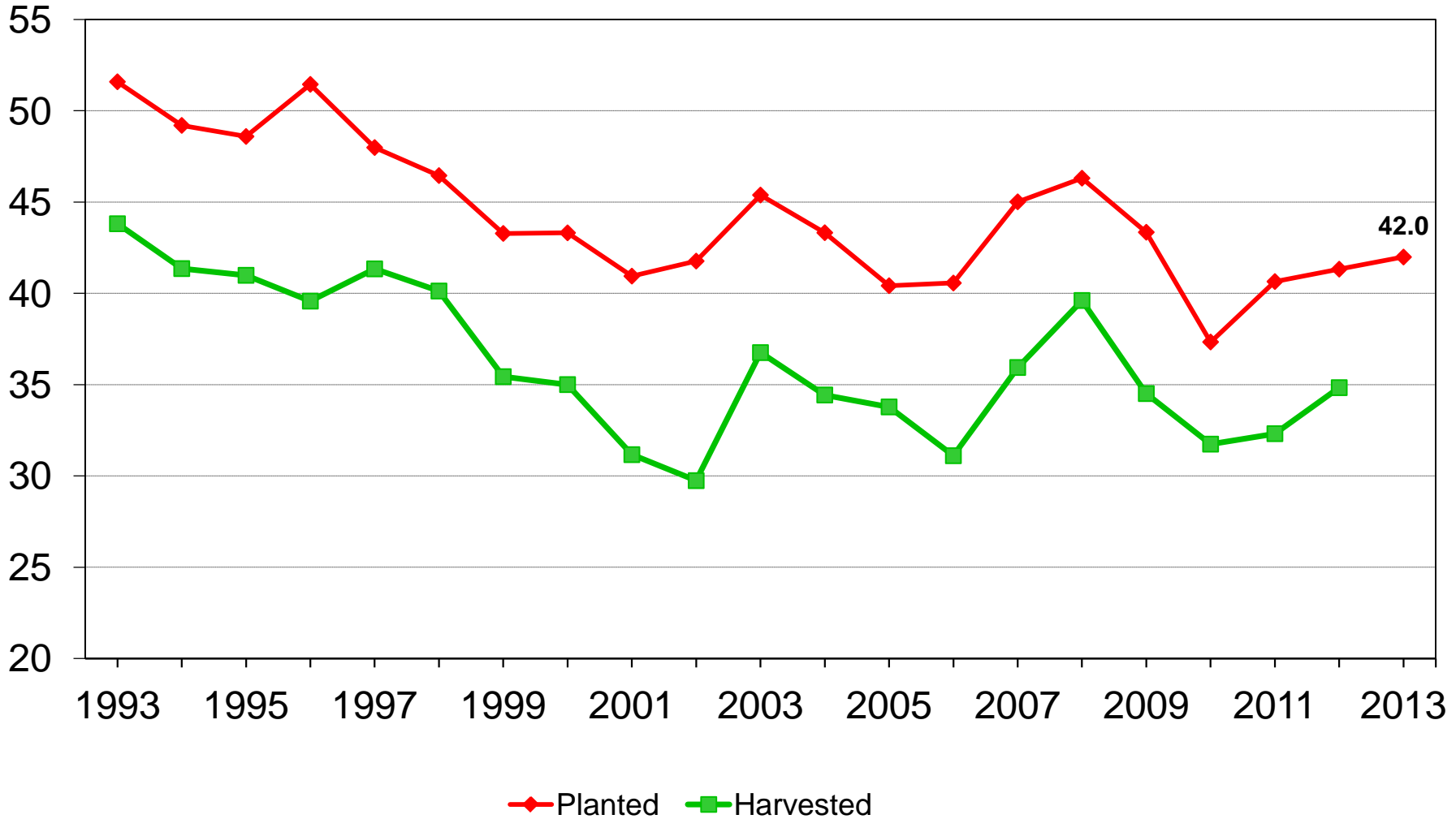




# U.S. Winter Wheat Acres



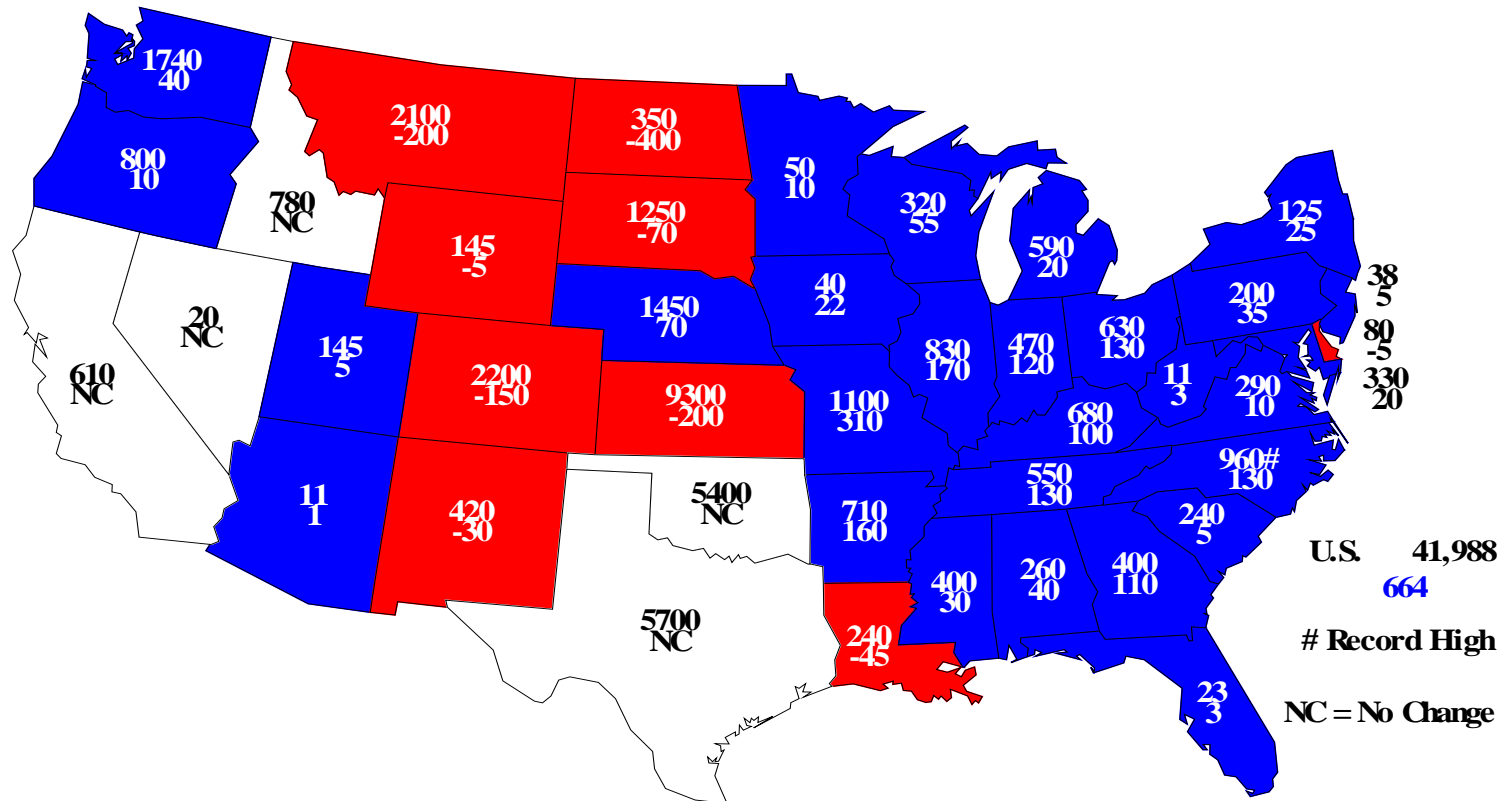
Million acres





# Winter Wheat Planted, 2013

## Acres(000) and Change From Previous Year

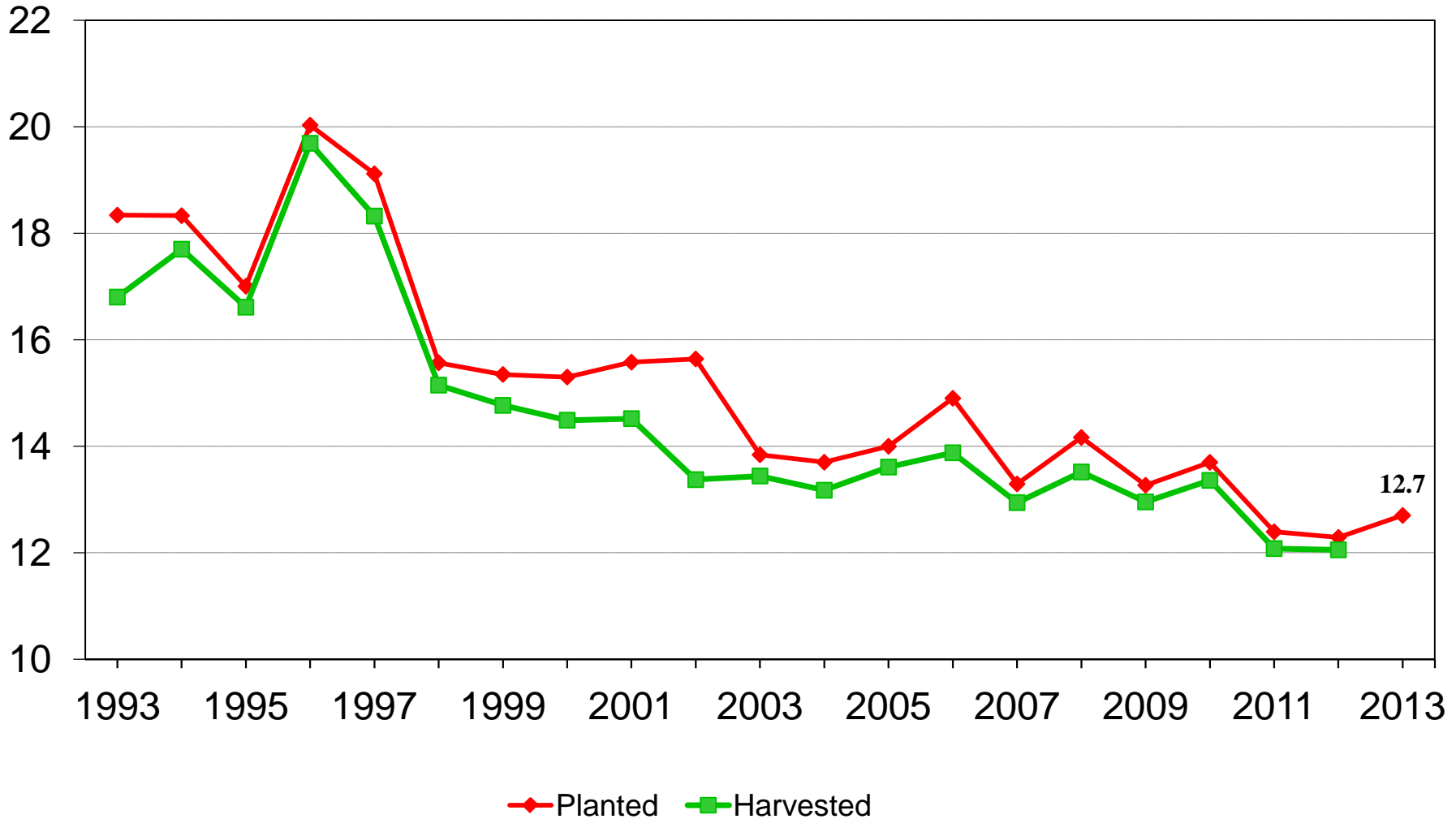




# U.S. Other Spring Wheat Acres



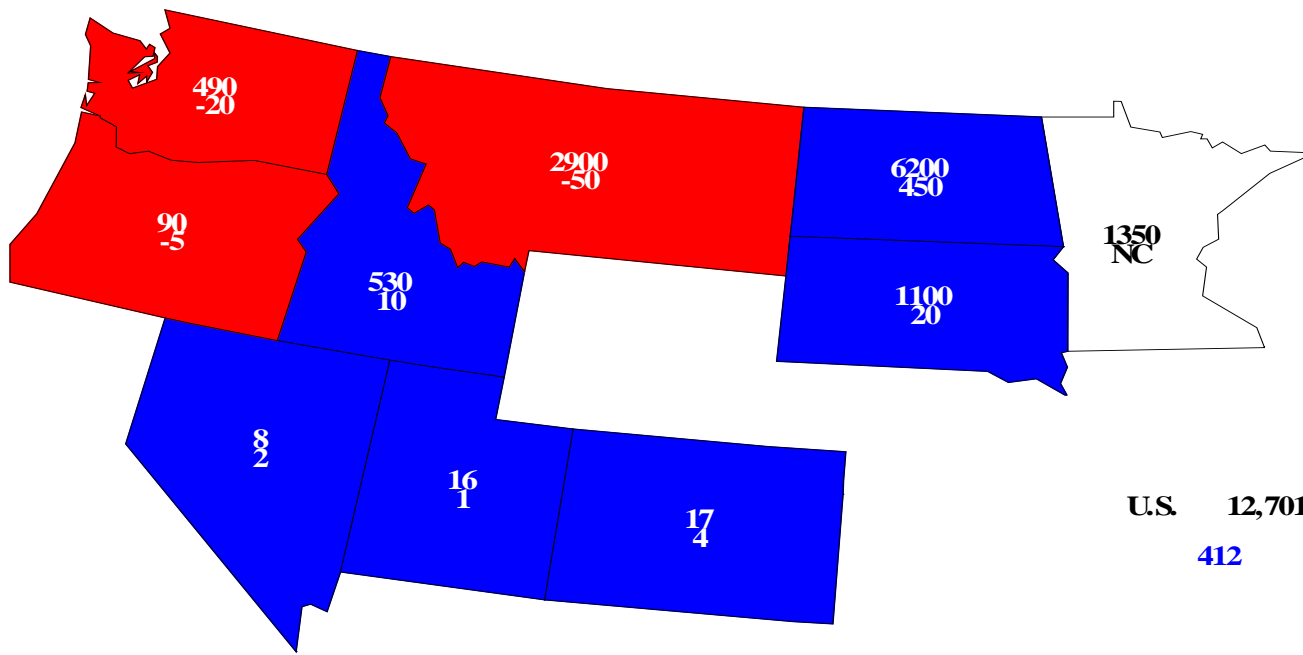
Million acres





# Other Spring Wheat Planted, 2013

## Acres(000) and Change From Previous Year



U.S. 12,701  
412

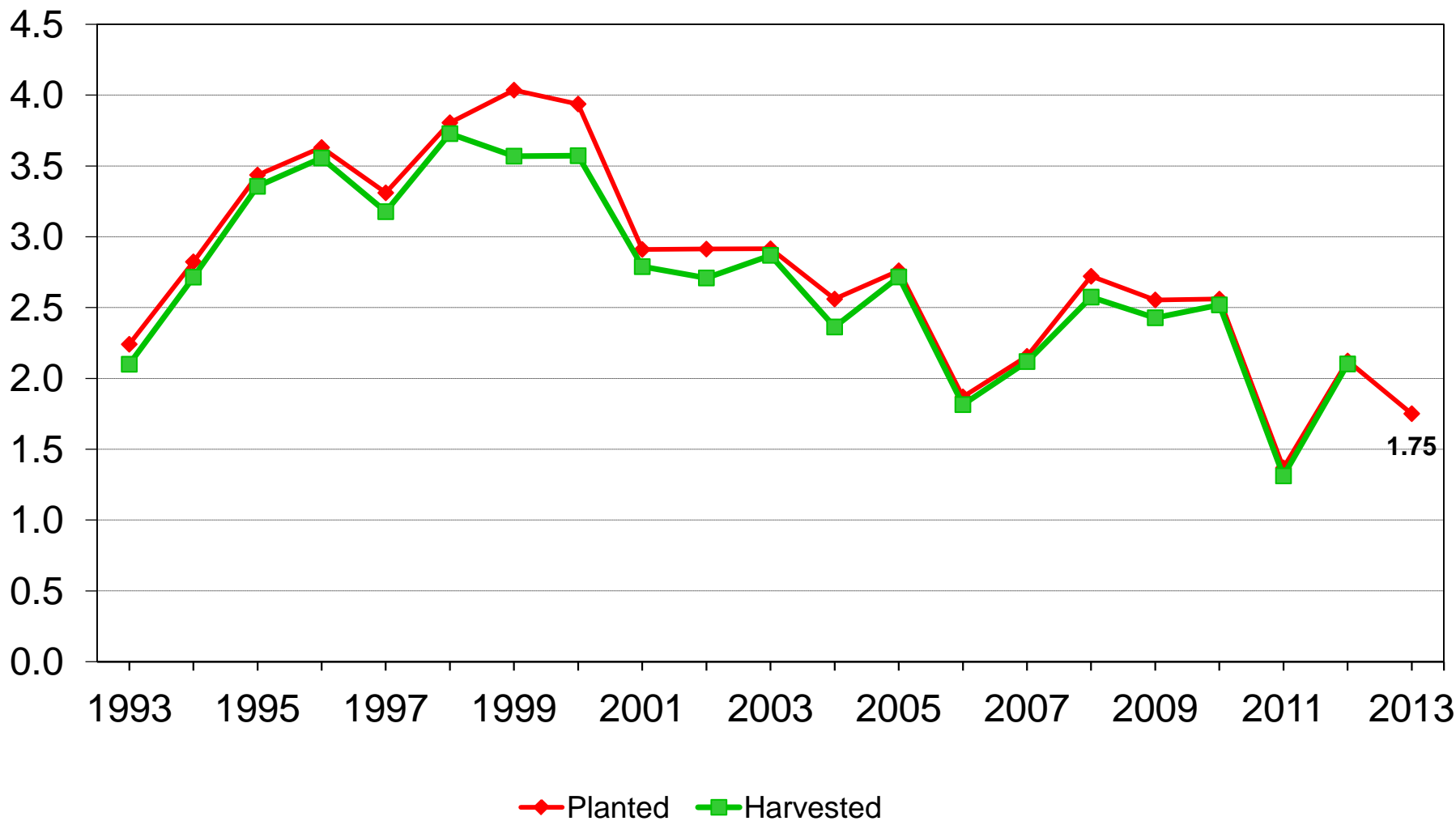
NC = No Change



# U.S. Durum Wheat Acres



Million acres





# March 2013 Prospective Plantings

<b>Feed Grains</b>	<b>2013 Intentions</b>	<b>2012 Planted</b>	<b>% Change</b>
	<i>--Million Acres--</i>		
<b>Corn</b>	<b>97.3</b>	<b>97.2</b>	<b>+0.1</b>
<b>Sorghum</b>	<b>7.62</b>	<b>6.24</b>	<b>+22.0</b>
<b>Oats</b>	<b>2.90</b>	<b>2.76</b>	<b>+5.1</b>
<b>Barley</b>	<b>3.63</b>	<b>3.64</b>	<b>-&lt;0.1</b>



# March 2013 Prospective Plantings

<b>Food Grains</b>	<b>2013 Intentions</b>	<b>2012 Planted</b>	<b>% Change</b>
	<i>--Million Acres--</i>		
<b>All Wheat</b>	<b>56.4</b>	<b>55.7</b>	<b>+1.3</b>
<b>Winter Wheat</b>	<b>42.0</b>	<b>41.3</b>	<b>+1.6</b>
<b>Durum Wheat</b>	<b>1.75</b>	<b>2.12</b>	<b>-17.5</b>
<b>Other Spring Wheat</b>	<b>12.7</b>	<b>12.3</b>	<b>+3.4</b>
<b>Rice</b>	<b>2.61</b>	<b>2.70</b>	<b>-3.3</b>



# March 2013 Prospective Plantings

<b>Oilseeds</b>	<b>2013 Intentions</b>	<b>2012 Planted</b>	<b>% Change</b>
	<i>--Million Acres--</i>		
<b>Soybeans</b>	<b>77.1</b>	<b>77.2</b>	<b>-0.1</b>
<b>Peanuts</b>	<b>1.19</b>	<b>1.64</b>	<b>-27.3</b>
<b>Sunflower</b>	<b>1.68</b>	<b>1.92</b>	<b>-12.2</b>
<b>Canola</b>	<b>1.65</b>	<b>1.77</b>	<b>-6.3</b>
<b>Flaxseed</b>	<b>0.272</b>	<b>0.344</b>	<b>-20.9</b>
<b>All Cotton</b>	<b>10.0</b>	<b>12.3</b>	<b>-18.6</b>
<b>Upland Cotton</b>	<b>9.82</b>	<b>12.1</b>	<b>-18.7</b>
<b>American Pima</b>	<b>0.206</b>	<b>0.238</b>	<b>-13.6</b>





# March 2013 Prospective Plantings

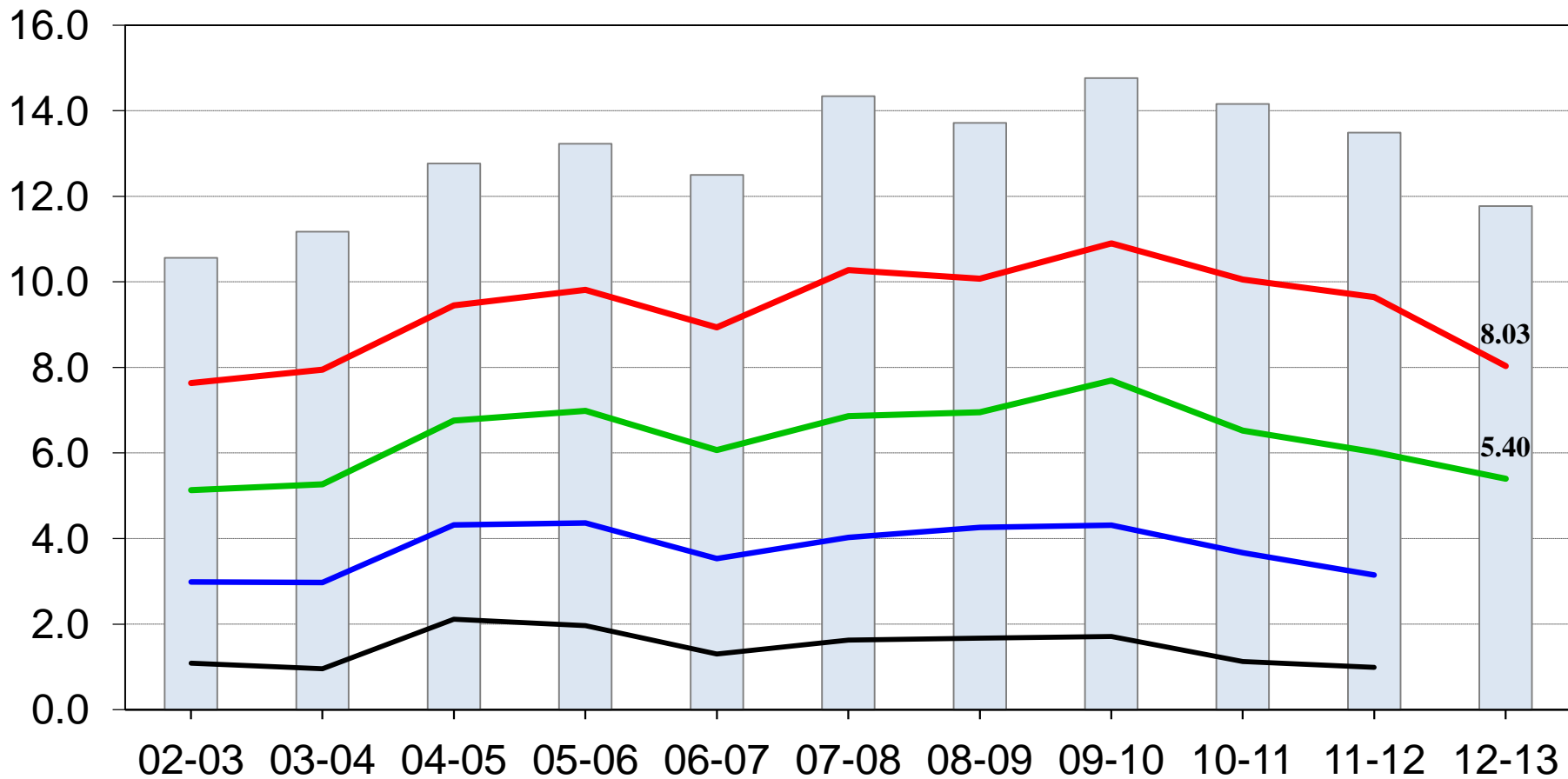
Other Crops	2013 Intentions	2012 Planted	% Change
<i>--Million Acres--</i>			
All Hay (Harvested)	56.4	56.3	+0.3
Sugarbeets	1.21	1.23	-1.5
Tobacco (Harvested)	.349	.336	+3.9
Spring Potatoes	.075	.097	-22.6
Sweet Potatoes	.122	.131	-6.3
Dry Edible Beans	1.50	1.74	-13.9
Dry Edible Peas	.850	.649	+31.0
Austrian Winter Peas	.019	.019	NC
Lentils	.335	.463	-27.6



# U.S. Corn Stocks



Billion bushels



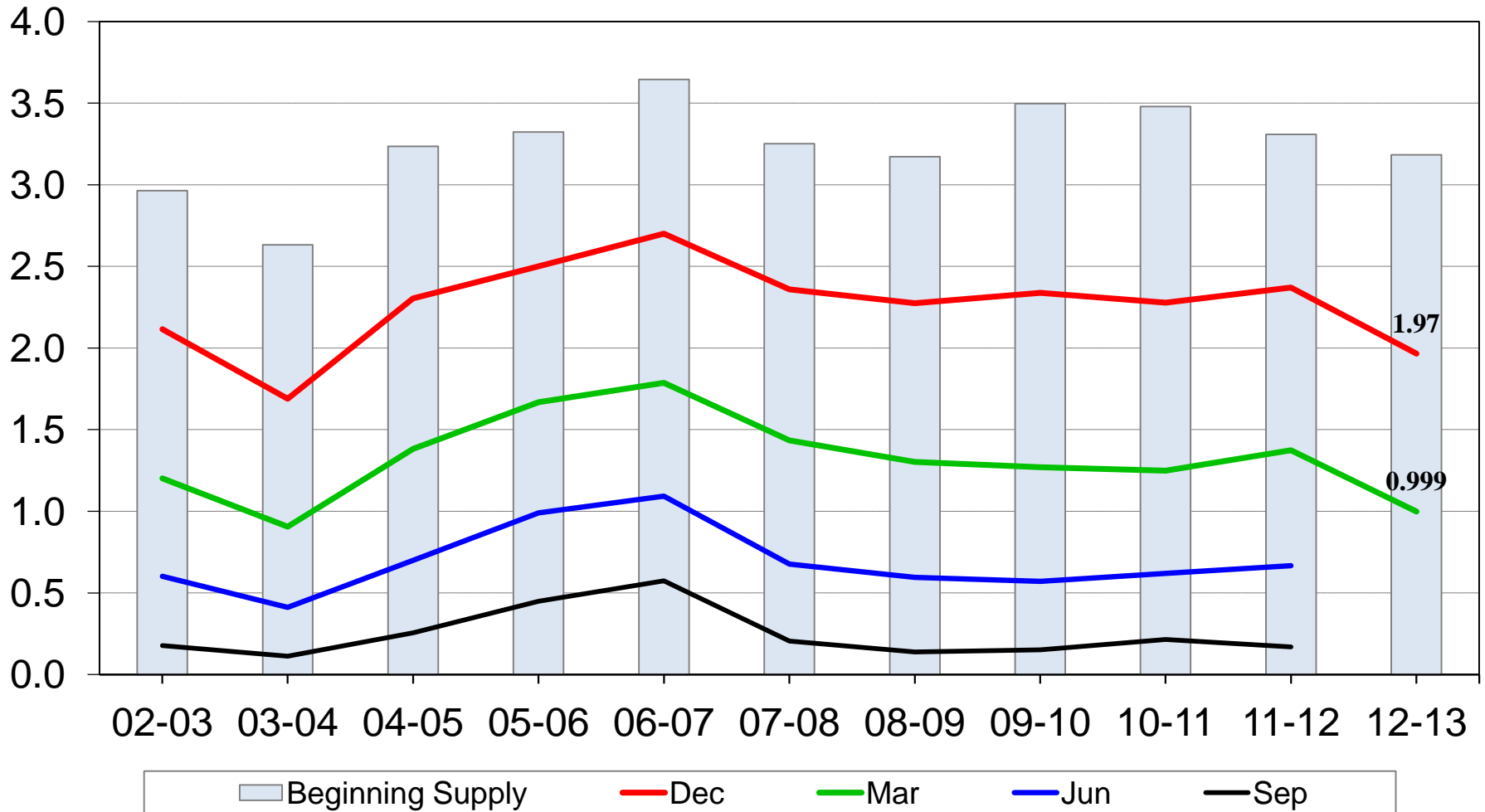
Beginning Supply    Dec    Mar    Jun    Sep



# U.S. Soybean Stocks



Billion bushels

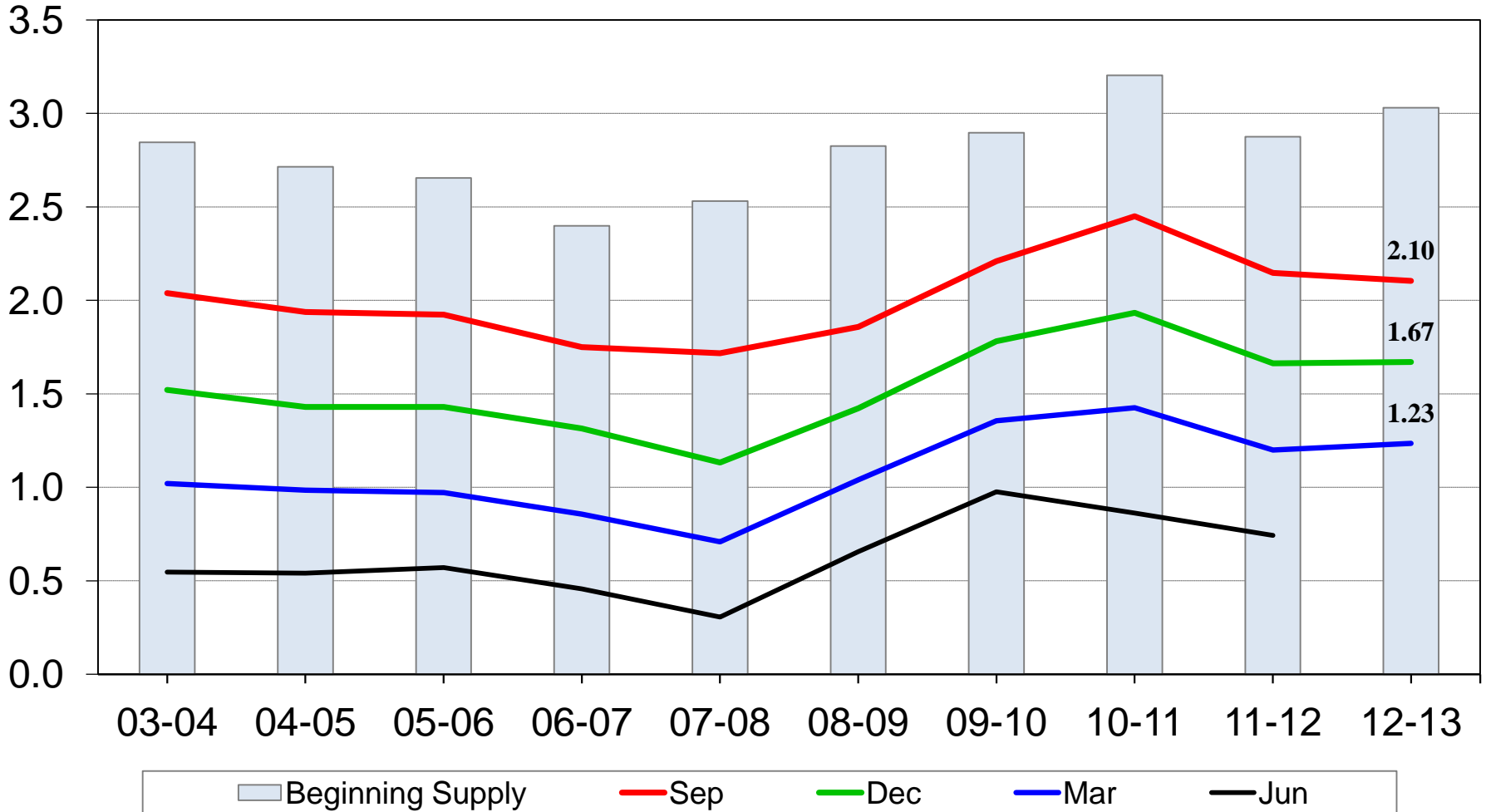




# U.S. All Wheat Stocks



Billion bushels

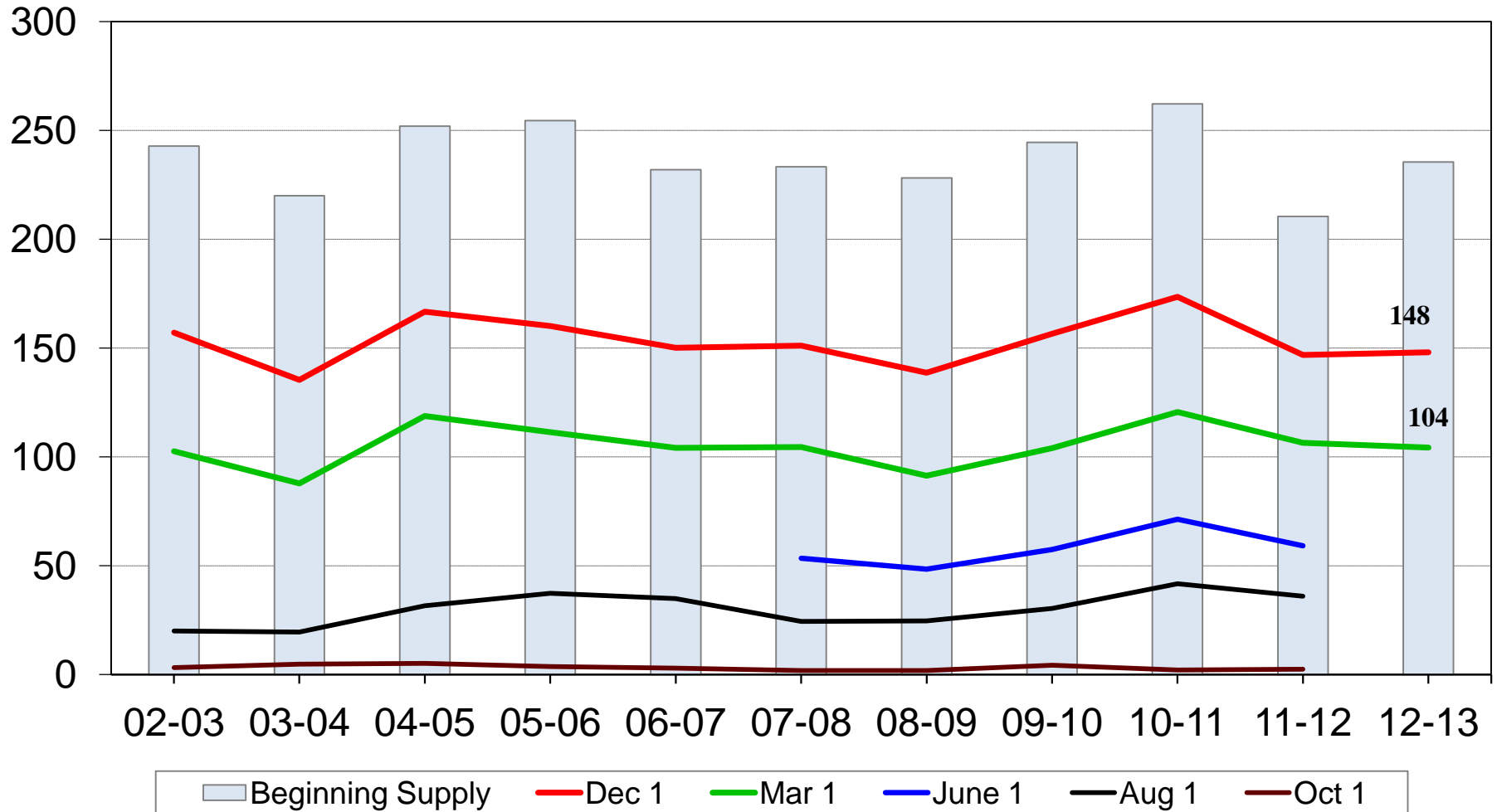




# U.S. Rough Rice Stocks



Million cwt





United States Department of Agriculture  
**National Agricultural Statistics Service**

---

---



Upcoming Reports

March 28	Hogs and Pigs
April 10	Crop Production
April 19	Cattle on Feed
April 30	Agricultural Prices



United States Department of Agriculture  
**National Agricultural Statistics Service**

---

---



All Reports Available At

[www.nass.usda.gov](http://www.nass.usda.gov)

For Questions

202-720-2127

800-727-9540

[nass@nass.usda.gov](mailto:nass@nass.usda.gov)