



United States Department of Agriculture
National Agricultural Statistics Service



MAY CROP PRODUCTION

Executive Summary

MAY 9, 2014

12:00 PM



Contents



Field Crops	Fruits/Nuts
Winter Wheat	Citrus
Hay Stocks	Peaches (CA)
Cotton	Almonds (CA)
Tobacco	
Potatoes	

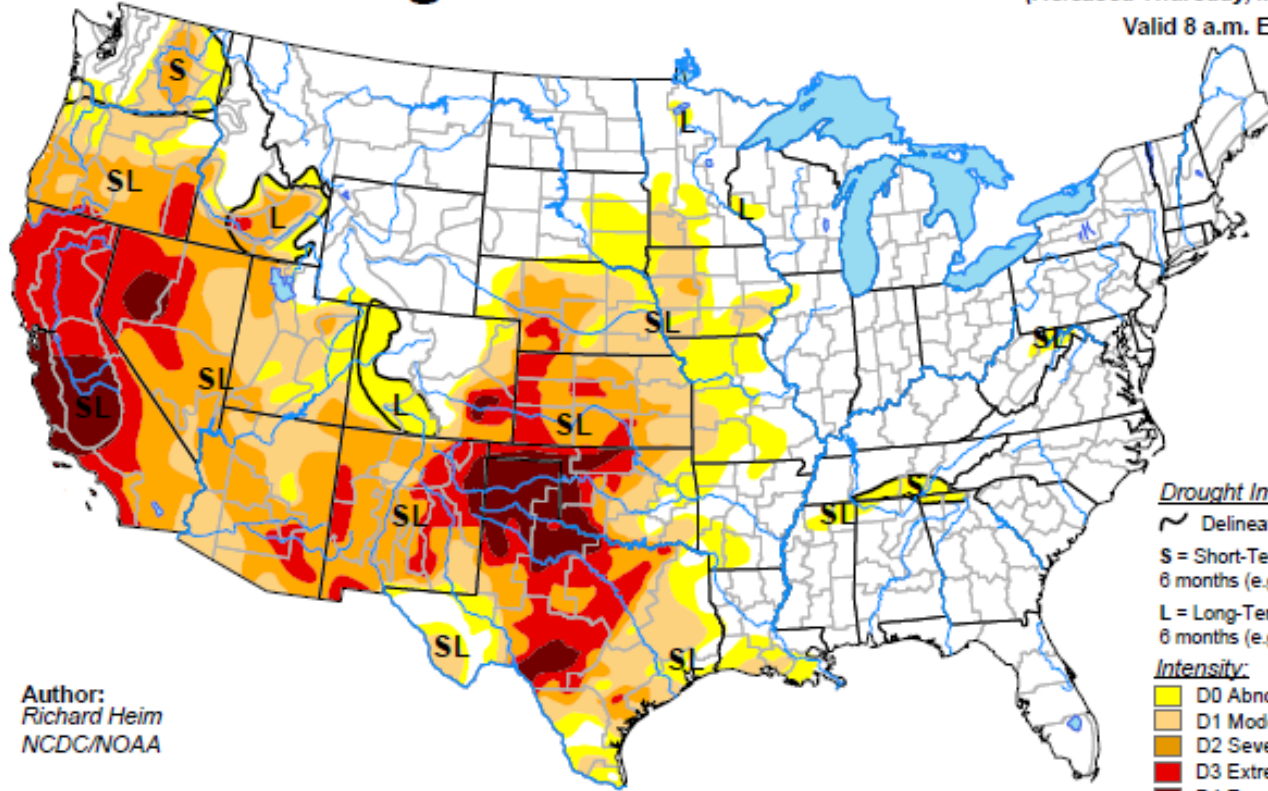


Survey Overview

	Ag Yield	Objective Yield
Survey Type	Farmer Reported	Field Measurement
Crops Included	Winter and Durum Wheat and Hay Stocks	Winter Wheat
States	All except AK and HI	KS, OK, TX
Sample Size	12,699	335
Collection Period	Apr 26 - May 6	Apr 24 - May 1

U.S. Drought Monitor

April 29, 2014
 (Released Thursday, May 1, 2014)
 Valid 8 a.m. EDT



Author:
 Richard Heim
 NCDC/NOAA

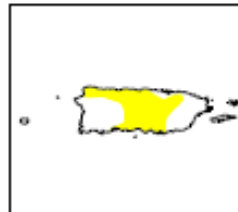
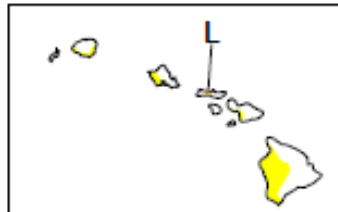
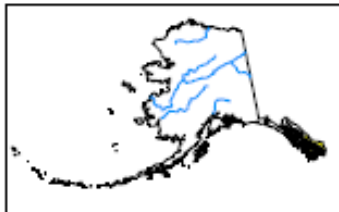
Drought Impact Types:

- ~ Delineates dominant impacts
- S = Short-Term, typically less than 6 months (e.g. agriculture, grasslands)
- L = Long-Term, typically greater than 6 months (e.g. hydrology, ecology)

Intensity:

- D0 Abnormally Dry
- D1 Moderate Drought
- D2 Severe Drought
- D3 Extreme Drought
- D4 Exceptional Drought

The Drought Monitor focuses on broad-scale conditions. Local conditions may vary. See accompanying text summary for forecast statements.

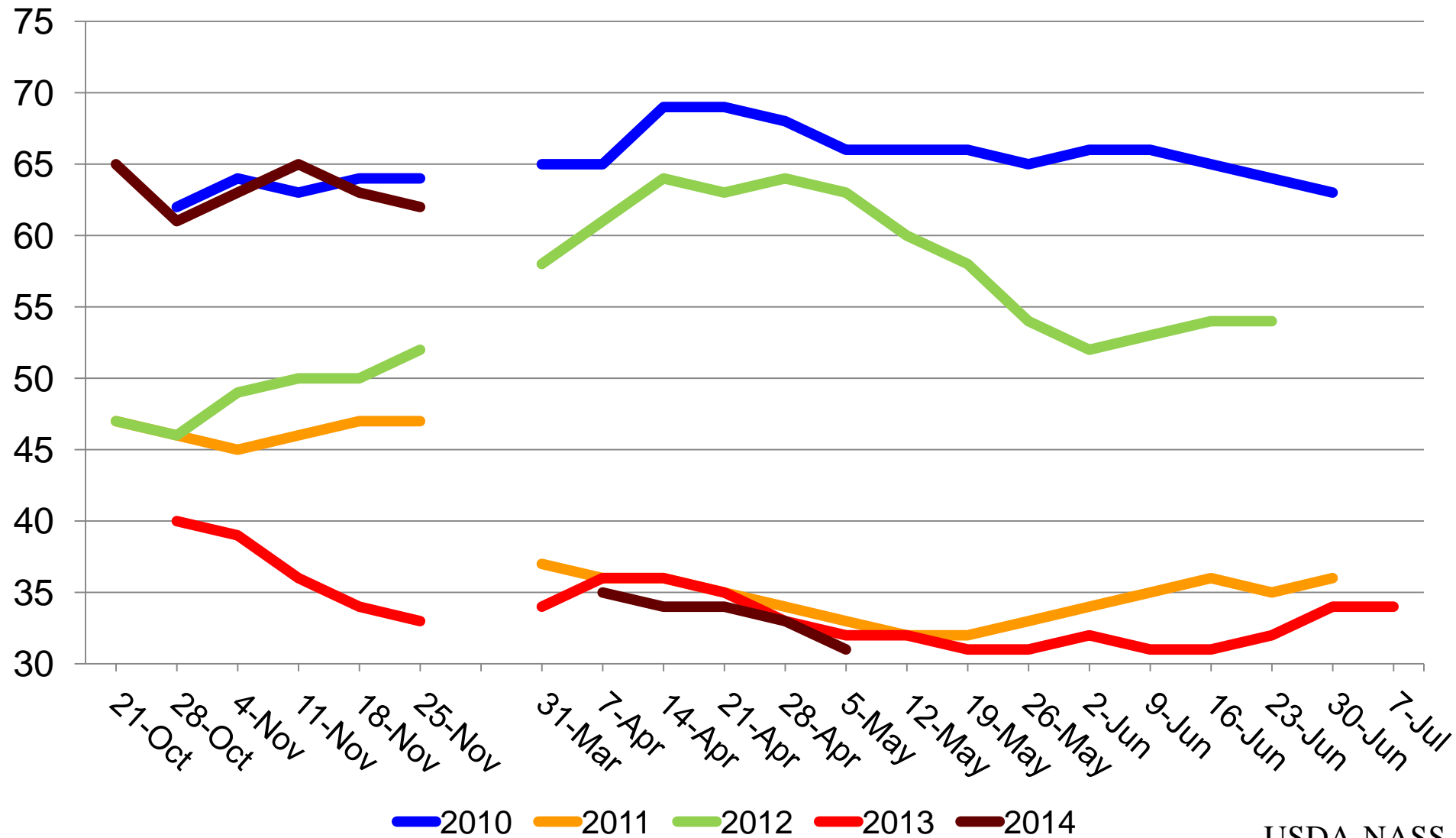


<http://droughtmonitor.unl.edu/>



Winter Wheat Condition

Percent Rated Good to Excellent





May 2014 Crop Production

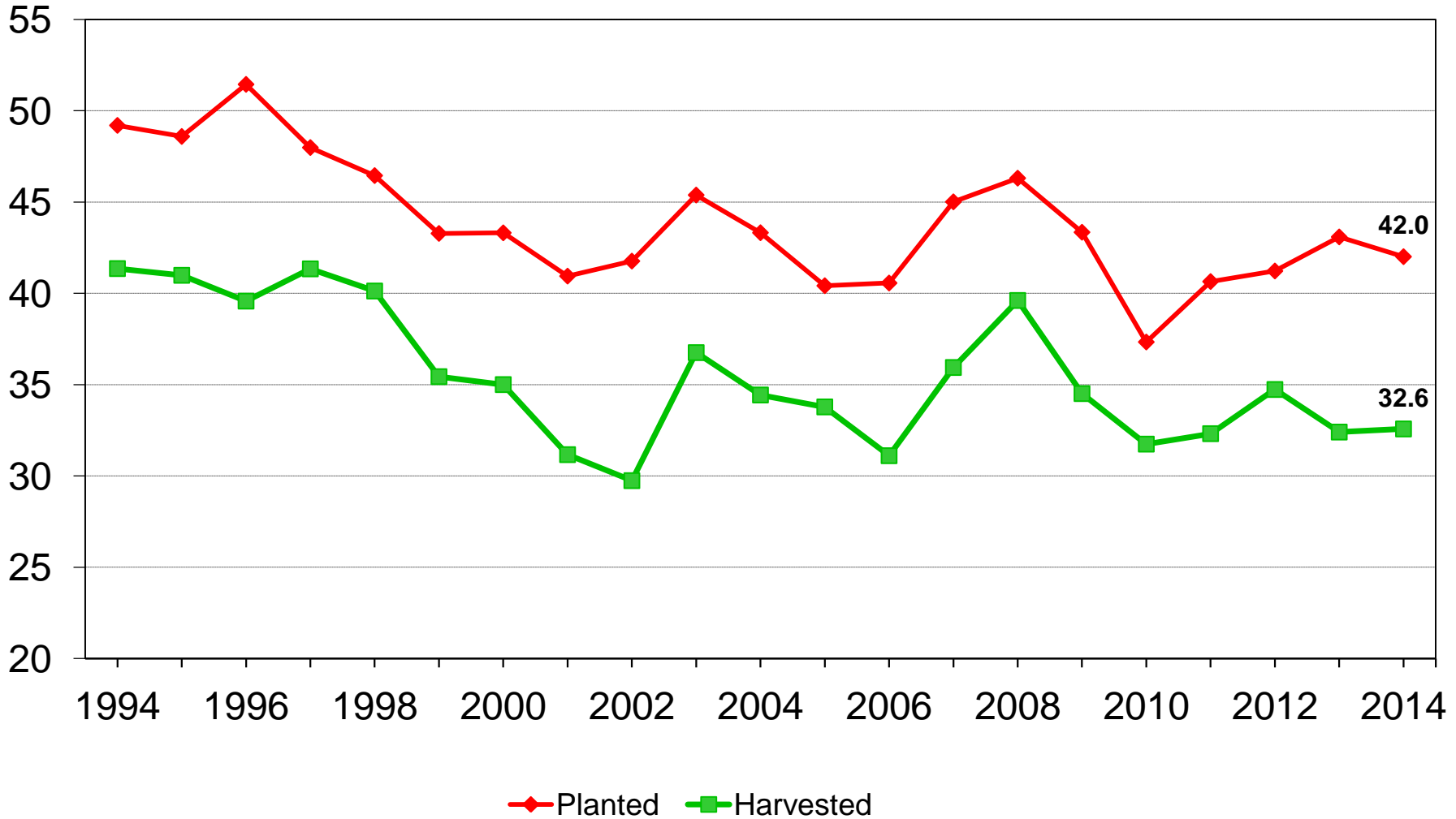
Crop	Unit	May 2014	% Change from Prev Season
Winter Wheat			
Harvested	Mil Ac	32.6	+0.1
Yield	Bu/Ac	43.1	-9.1
Production	Bil Bu	1.40	-8.6



U.S. Winter Wheat Acres



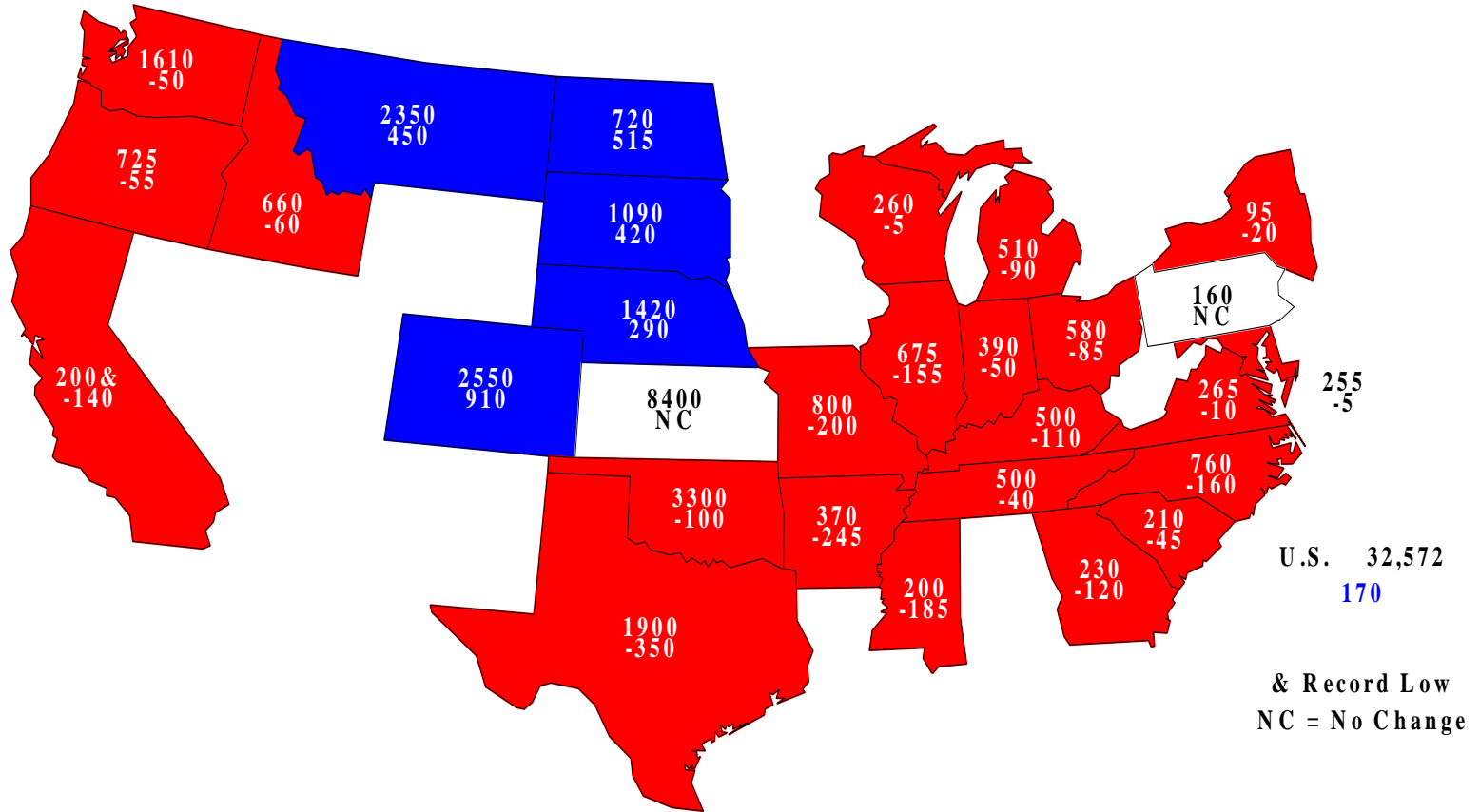
Million acres





Winter Wheat Harvested, 2014

Acres (000) and Change From Previous Year

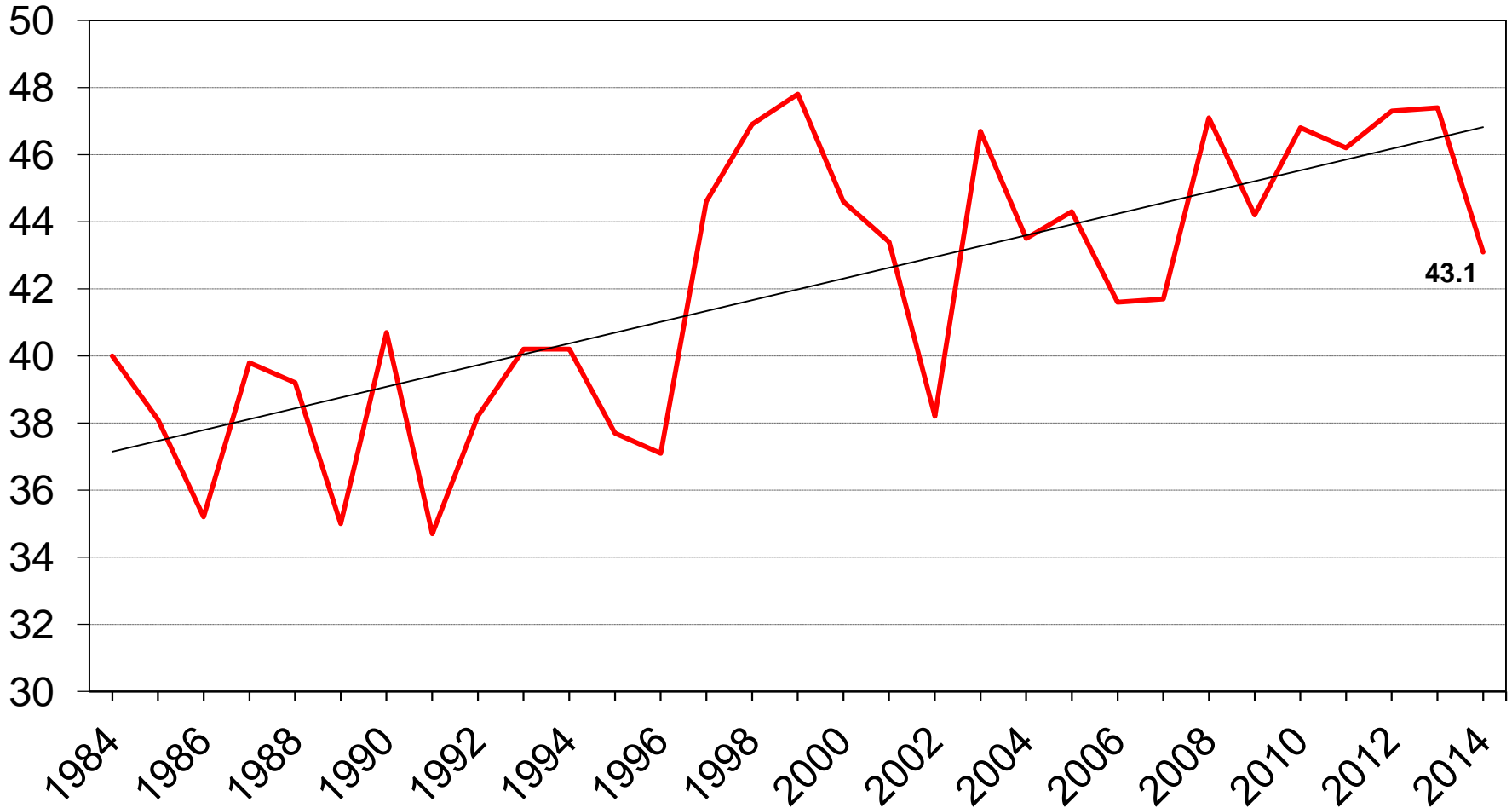




U.S. Winter Wheat Yield



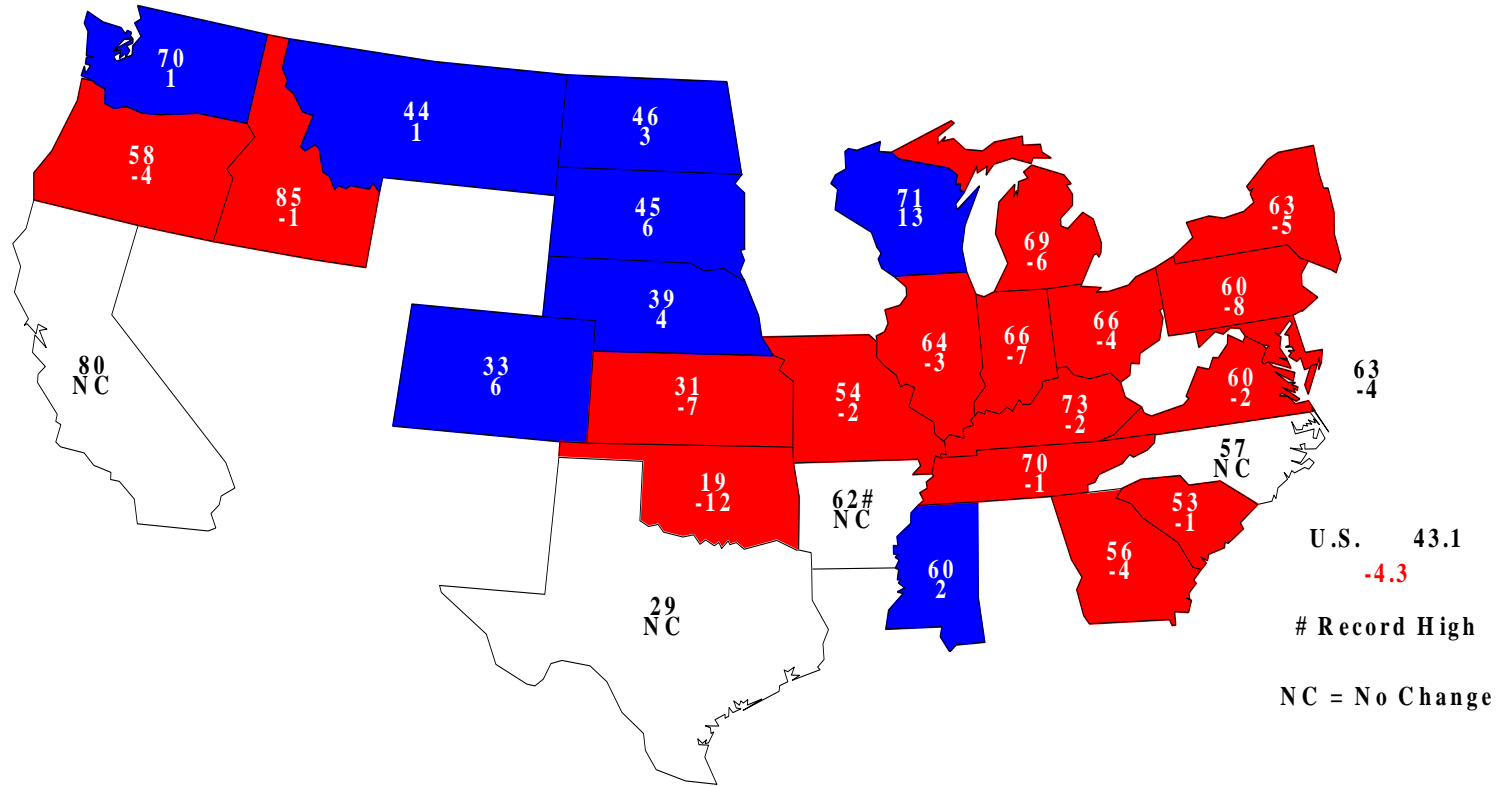
Bushels/acre





Winter Wheat Yield - May 1, 2014

Bushels and Change From Previous Year

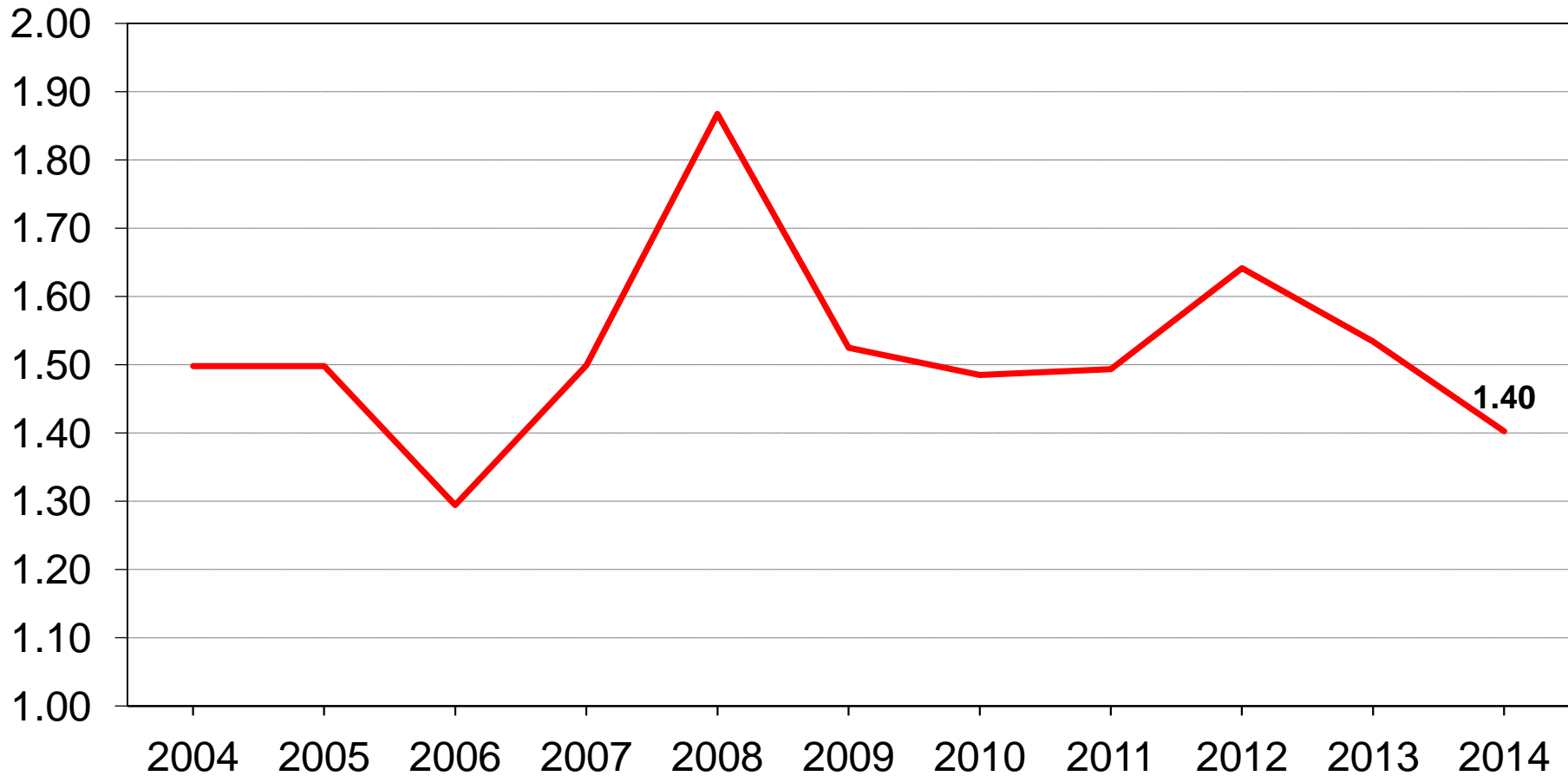




U.S. Winter Wheat Production



Billion bushels





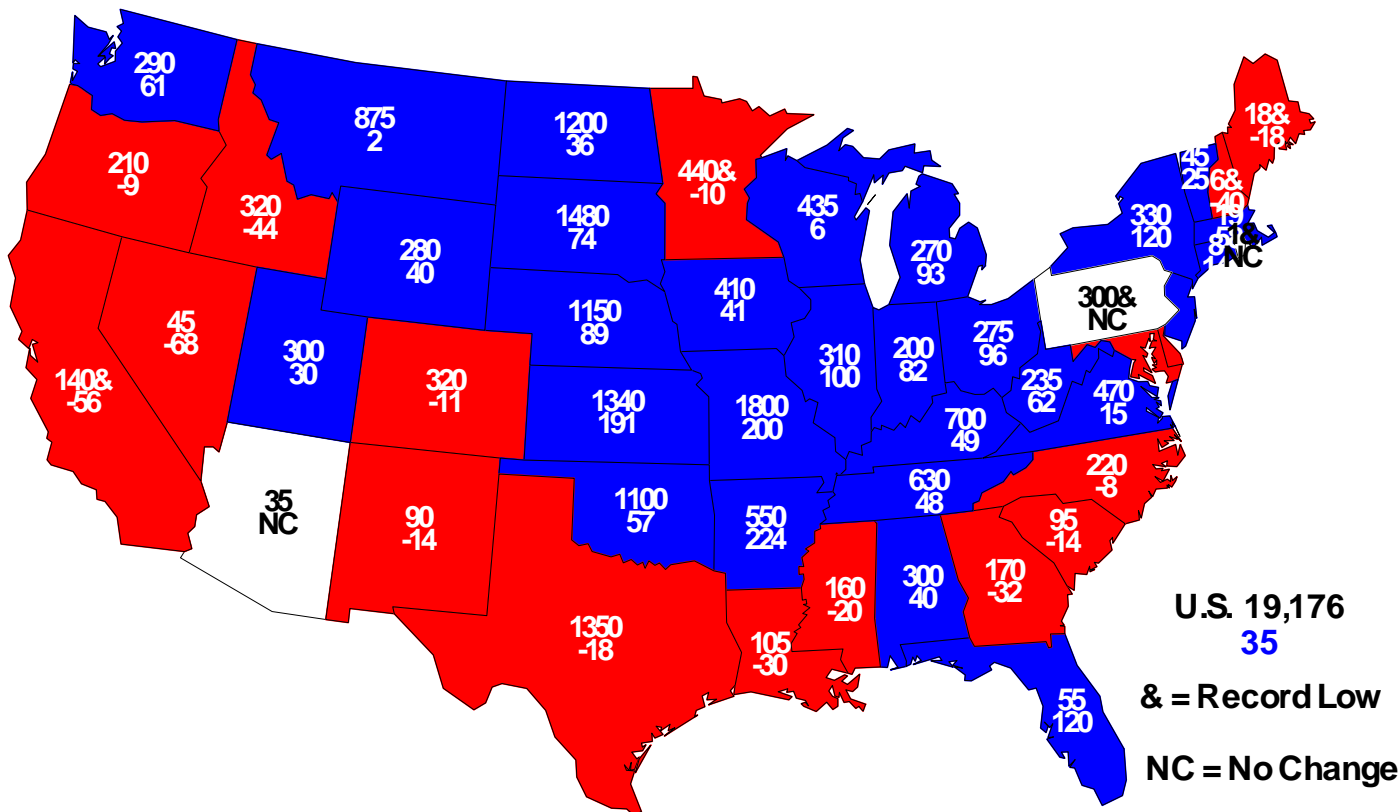
May 2014 Crop Production

Crop	Unit	May 2014	% Change from Prev Season
Hay Stocks	Mil Tons	19.2	+35.5



All Hay Stocks - May 1, 2014

Stocks (000) and Percent Change From Previous Year





May 2014 Crop Production

Crop	Unit	May 2014	% Change from Prev Forecast	% Change from Prev Season
Oranges	Mil Tons	7.21	+0.2	-12.8
Grapefruit	Mil Tons	1.07	-1.6	-11.5
Tangerines and Mandarins	Thou Tons	676	NC	-1.2
Tangelos	Thou Tons	40.0	NC	-11.1



May 2014 Crop Production

Crop	Unit	May 2014	% Change from Prev Forecast	% Change from Prev Season
Potatoes				
Spring	Mil Cwt	21.0	---	-5.2
Almonds (CA)	Bil Lbs	1.95	---	-2.5
Peaches (CA)	Thou Tons	640	---	NA



May 2014 Crop Production

Crop	Unit	May 2014	% Change from Prev Estimate	% Change from Prev Season
Cotton, All (2013)				
Planted	Mil Ac	10.4	NC	-15.5
Harvested	Mil Ac	7.54	-1.6	-19.5
Yield	Lbs/Ac	821	-0.6	-7.4
Production	Mil Bales	12.9	-2.1	-25.4
Tobacco, All (2013)				
Harvested	Thou Ac	356	NC	+5.8
Yield	Lbs/Ac	2,034	-<0.1	-10.3
Production	Mil Lbs	724	-<0.1	-5.1



United States Department of Agriculture
National Agricultural Statistics Service



Upcoming Reports

May 16	Cattle on Feed
May 30	Agricultural Prices
June 11	Crop Production
June 19	Floriculture Crops
June 27	Quarterly Hogs and Pigs
June 30	Acreage Grain Stocks



United States Department of Agriculture
National Agricultural Statistics Service



All Reports Available At

www.nass.usda.gov

For Questions

202-720-2127

800-727-9540

nass@nass.usda.gov