



United States Department of Agriculture
National Agricultural Statistics Service



Cattle Inventory
July 1, 2015

Executive Briefing

Survey Overview

	July Cattle
Data Collection Period	June 30 – July 14
Sample Size	10,180
Collection Methods	Mail, Telephone, Internet, Face-to-Face Interview
Primary Data Items	Total Inventory, Inventory by Class, Calf Crop, and Cattle on Feed



U.S. Cattle and Calves Revisions



Survey	Item	Initial Estimate (1,000 head)	Previous Revision (1,000 head)	Current Revision (1,000 head)	Net Revision (1,000 head)	Current Estimate (1,000 head)
July 1, 2014	Cattle and Calves	95,000	+1,000 +1%	+300 +0.3%	+1,300 +1.4%	96,300
	All Cows	39,000	-100 -0.3%	+100 +0.3%		39,000
	Beef Cows	29,733	-100 -0.3%	+117 +0.4%	+17 +0.06%	29,750
	Calf Crop	33,600	+300 +0.9%		+300 +0.9%	33,900



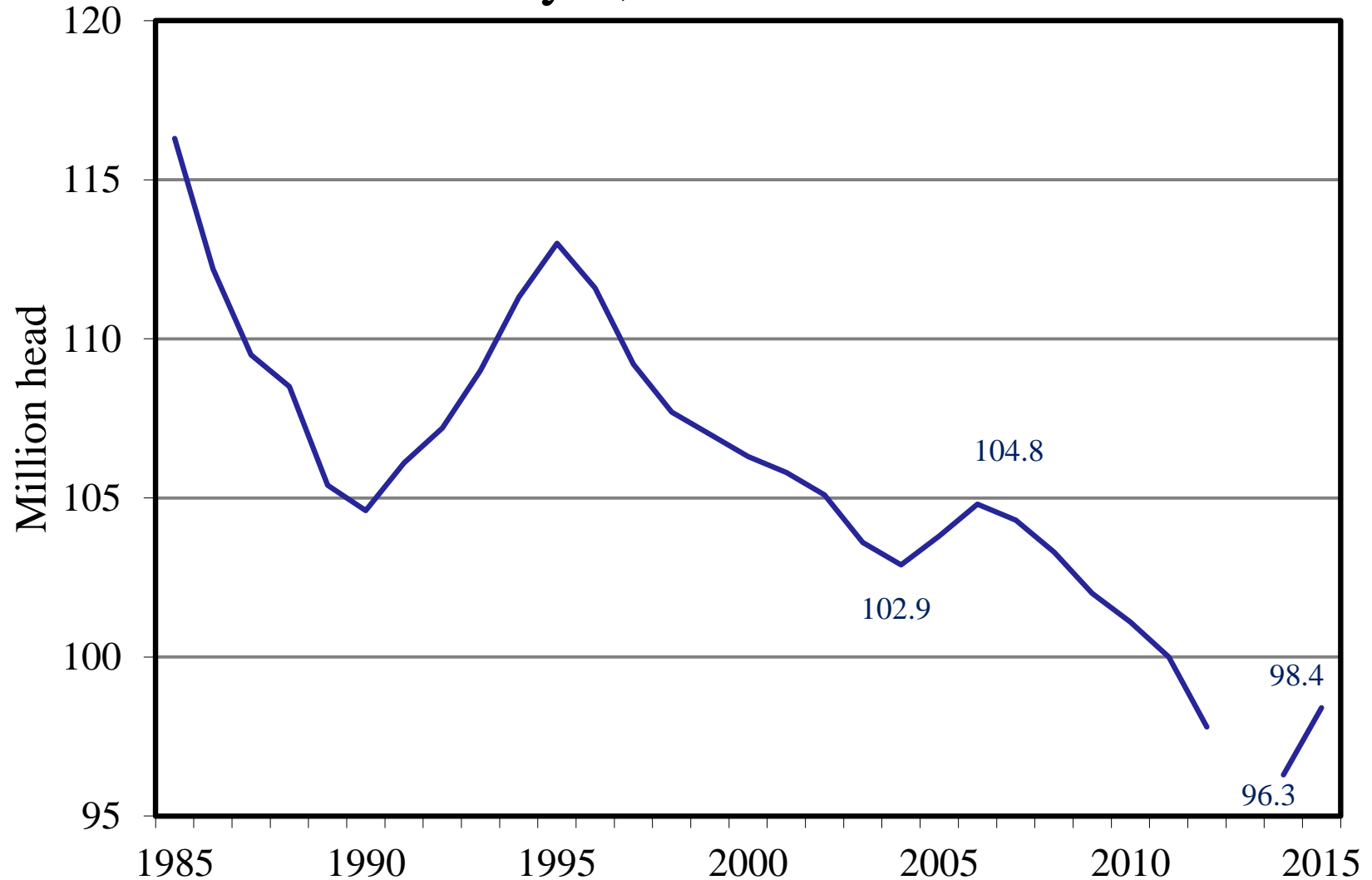
U.S. Cattle Inventory July 1



Items	2014	2015	% PY
	1,000 head		
All Cattle & Calves	96,300	98,400	102%
Cows & Heifers that have Calved	39,000	39,800	102%
Beef Cows	29,750	30,500	103%
Milk Cows	9,250	9,300	101%
All Heifers 500 lbs & over	15,600	15,900	102%
For Beef Replacements	4,600	4,900	107%
For Milk Replacements	4,100	4,200	102%
Other Heifers	6,900	6,800	99%
Steers 500 lbs & over	13,700	14,100	103%
Bulls 500 lb & over	1,900	1,900	100%
Calves under 500 lbs	26,100	26,700	102%
Calf Crop - Annual	33,900	34,300	101%
Cattle on Feed	11,900	12,100	102%

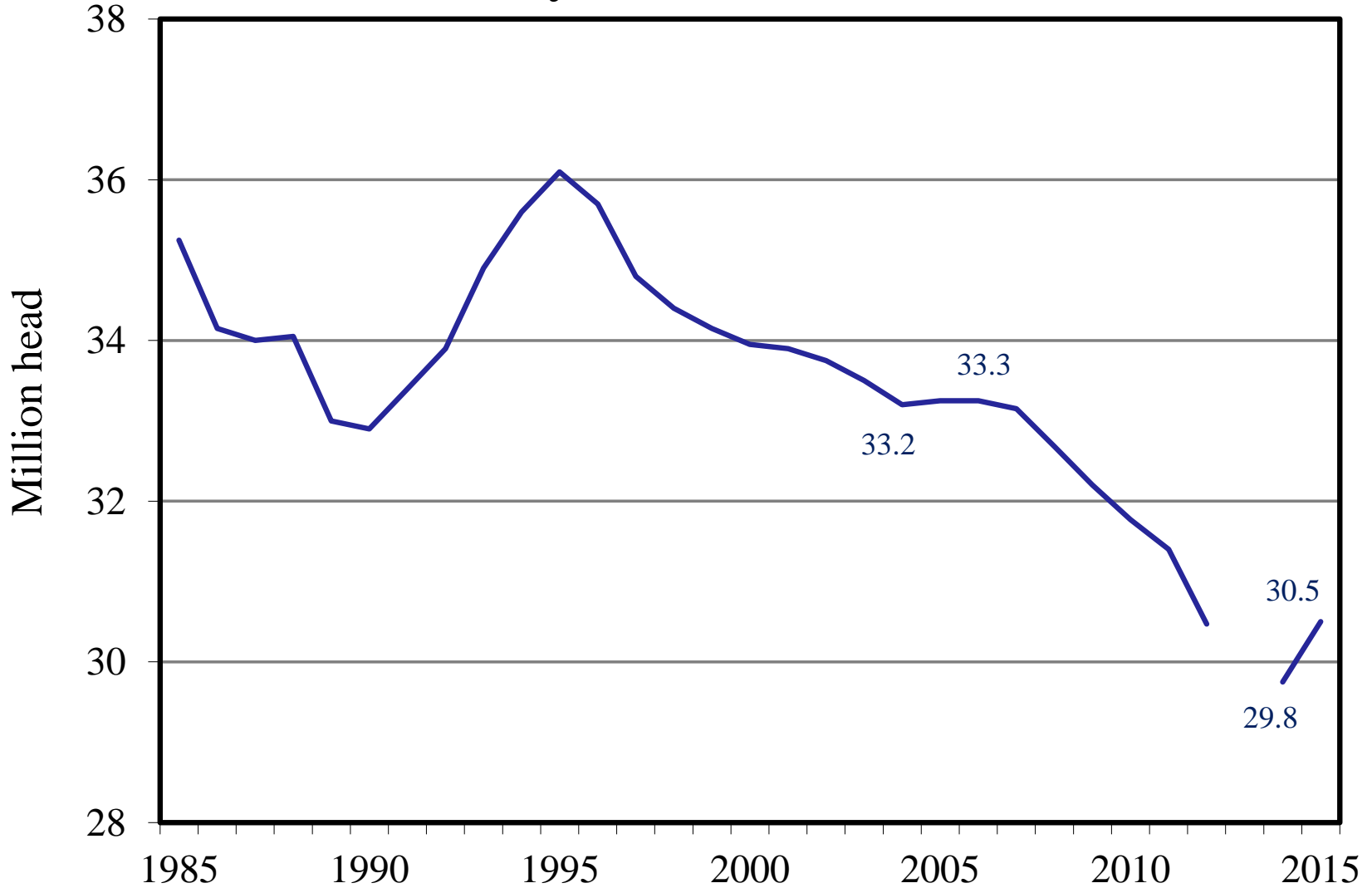
U.S. All Cattle & Calves

July 1, 1985 - 2015



U.S. Beef Cows

July 1, 1985 - 2015





NASS Estimates Compared to Trade Expectations Percent of Previous Year



Inventory Items	NASS Estimate	Trade Average	Trade Range
All Cattle & Calves	102.2%	101.8%	101.2 - 102.2%
All Cows	102.1%	102.3%	101.5 - 103.3%
Beef Cows	102.5%	102.8%	101.9 - 104.2%
Milk Cows	100.5%	100.5%	100.4 - 100.6%
Calf Crop	101.2%	101.7%	100.8 - 102.7%
All Cattle on Feed	101.7%	101.6%	99.9 - 102.2%



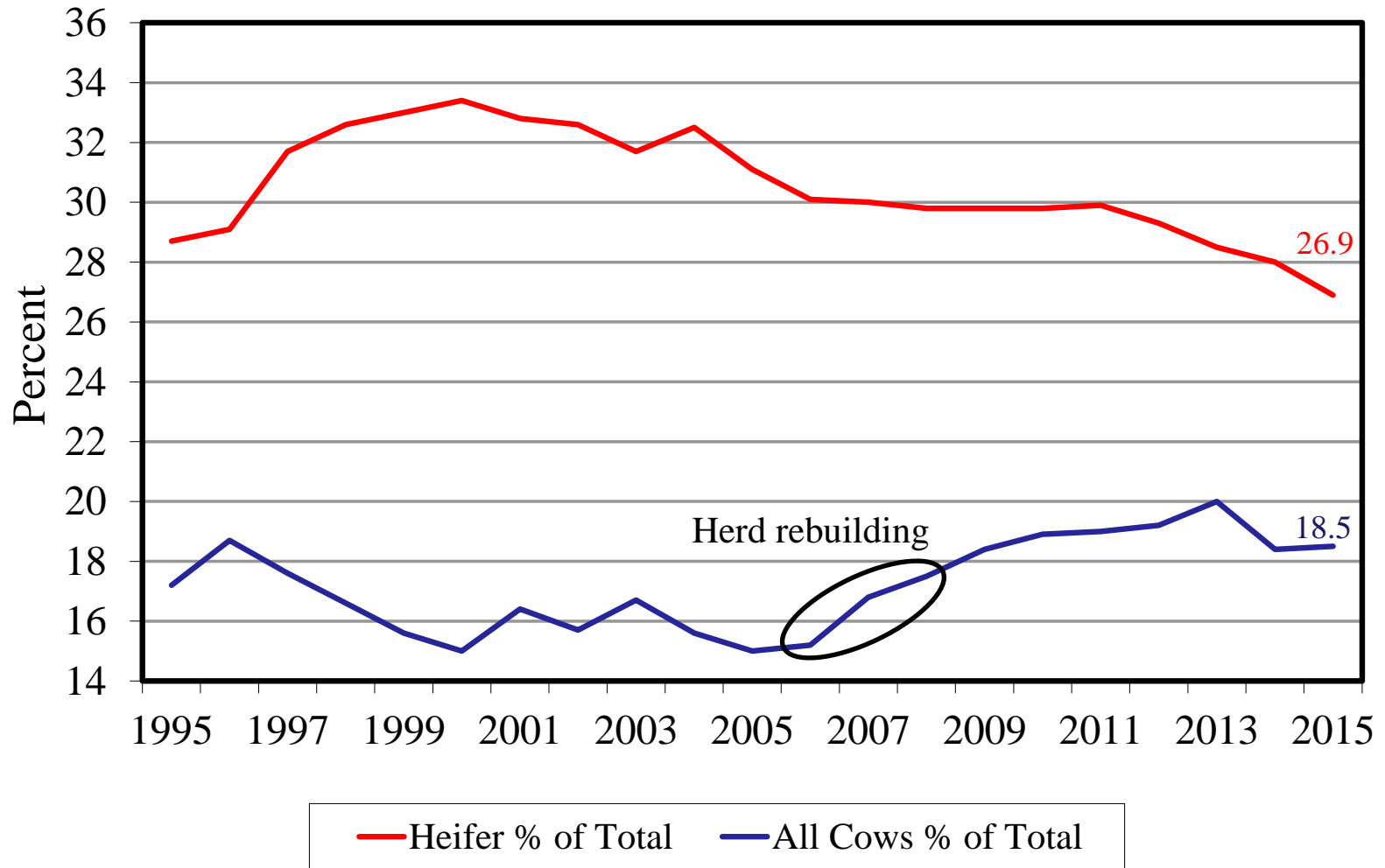
Federally Inspected Slaughter

January – June

2014 – 2015

	2014	2015	Change
	1,000 head		
Total Cattle Slaughter	14,972	13,969	-1,003
Steer Slaughter	7,753	7,406	-347
Heifer Slaughter	4,200	3,762	-438
All Cow Slaughter	2,752	2,578	-174
Dairy Cow Slaughter	1,391	1,457	+66
Beef Cow Slaughter	1,361	1,122	-239
Totals may not add due to rounding			

All Cow & Heifer Slaughter as a Percent of Total Slaughter, January 1 – June 30





U.S. Cattle on Feed

July 1

	2014	2015	% PY
	1,000 head		
All Cattle on Feed	11,900	12,100	102%
1,000+	10,043	10,236	102%
< 1,000	1,857	1,864	100%



U.S. Feeder Cattle Supply Outside Feedlots July 1



		2014	2015	% PY
		1,000 head		
Calves < 500 lbs	+	26,100	26,700	102%
Steers > 500 lbs	+	13,700	14,100	103%
Other Heifers > 500 lbs	+	6,900	6,800	99%
Total Supply	=	46,700	47,600	102%
Cattle on Feed	-	11,900	12,100	102%
Feeder Cattle Supply Outside Feedlots	=	34,800	35,500	102%

Upcoming Reports

Release Date	Report Title
July 30	Agricultural Prices
August 12	Crop Production
August 19	Milk Production
August 20	U.S. and Canadian Cattle U.S. and Canadian Hogs
August 21	Cattle on Feed



United States Department of Agriculture
National Agricultural Statistics Service



All Reports Available At
www.nass.usda.gov

For Questions
(202) 720-3570
(800) 727-9540
nass@nass.usda.gov