



United States Department of Agriculture
National Agricultural Statistics Service

Small Grains Summary
Grain Stocks
Executive Summary

Lance Honig, Chief
Crops Branch



Contents

Field Crops	Grain Stocks	Oilseed Stocks
Wheat	Corn	Soybeans
Barley	Wheat	Sunflower
Oats	Barley	Safflower
Rye	Oats	
	Sorghum	

Survey Overview

	September Ag Survey	Off-Farm Grain Stocks Survey
Survey Type	Farmer Reported	Off-Farm Grain Stock Facilities
Collection Method	Mail, Phone, Internet, Personal Interview	Mail, Phone, Internet, Personal Interview
Crops Included	Barley, Oats, Rye, Wheat	Barley, Corn, Mustard Seed, Oats, Soybean, Safflower, Sorghum, Sunflower, Wheat
States	All Except Hawaii	All States Except AK, HI, and NV
Sample Size	66,384	8,638
Collection Period	August 24 – September 19	August 24 – September 19



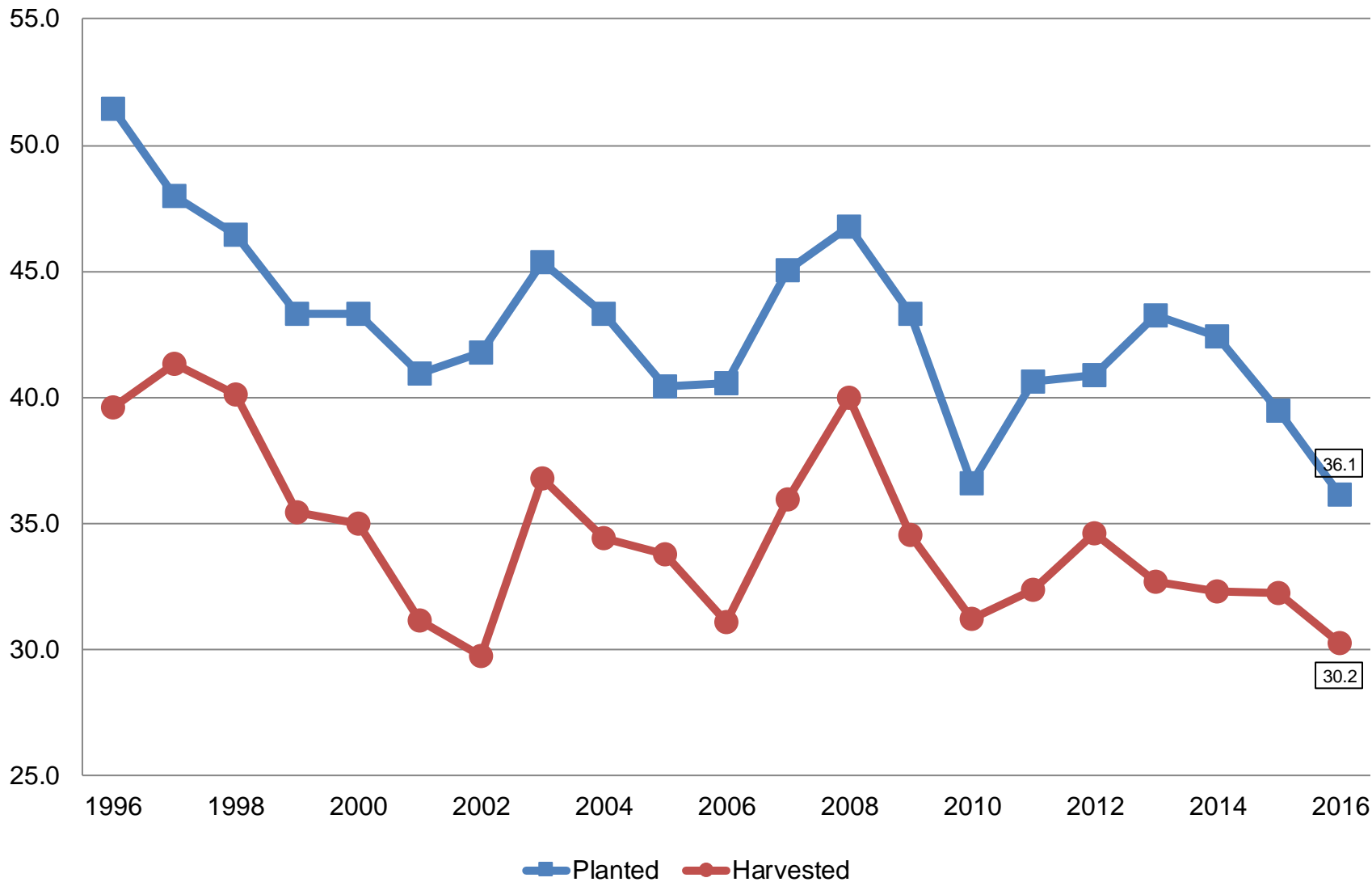
Small Grains Annual Summary

Crop	Unit	September 2016	% Change From Previous Estimate	% Change From Previous Season
Wheat, Winter				
Planted	Mil Ac	36.1	-1.1	-8.9
Harvested	Mil Ac	30.2	+0.2	-6.6
Yield	Bu/Ac	55.3	+0.7	+30.1
Production	Bil Bu	1.67	+0.9	+21.6



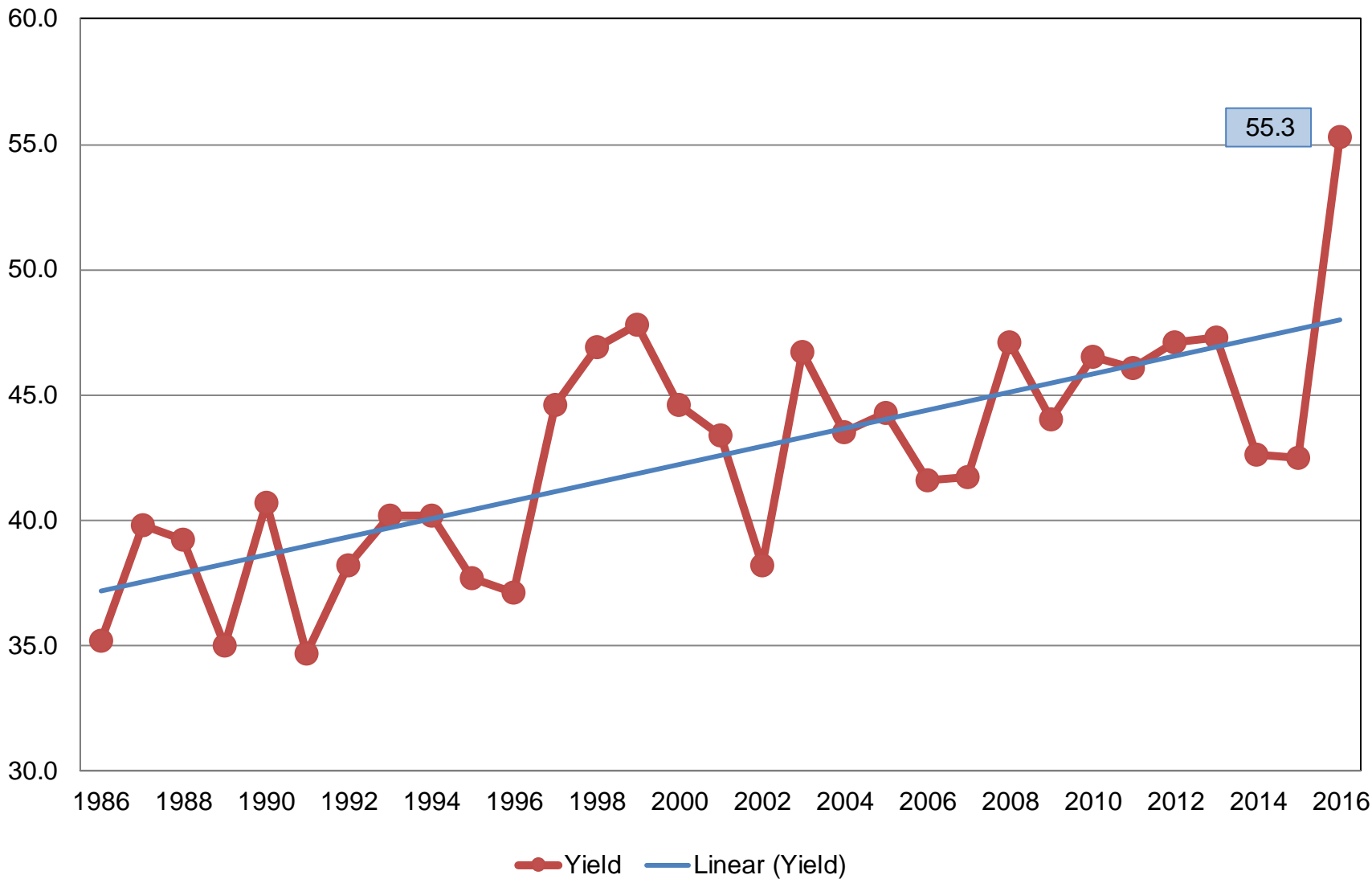
Winter Wheat Acres United States

Million Acres



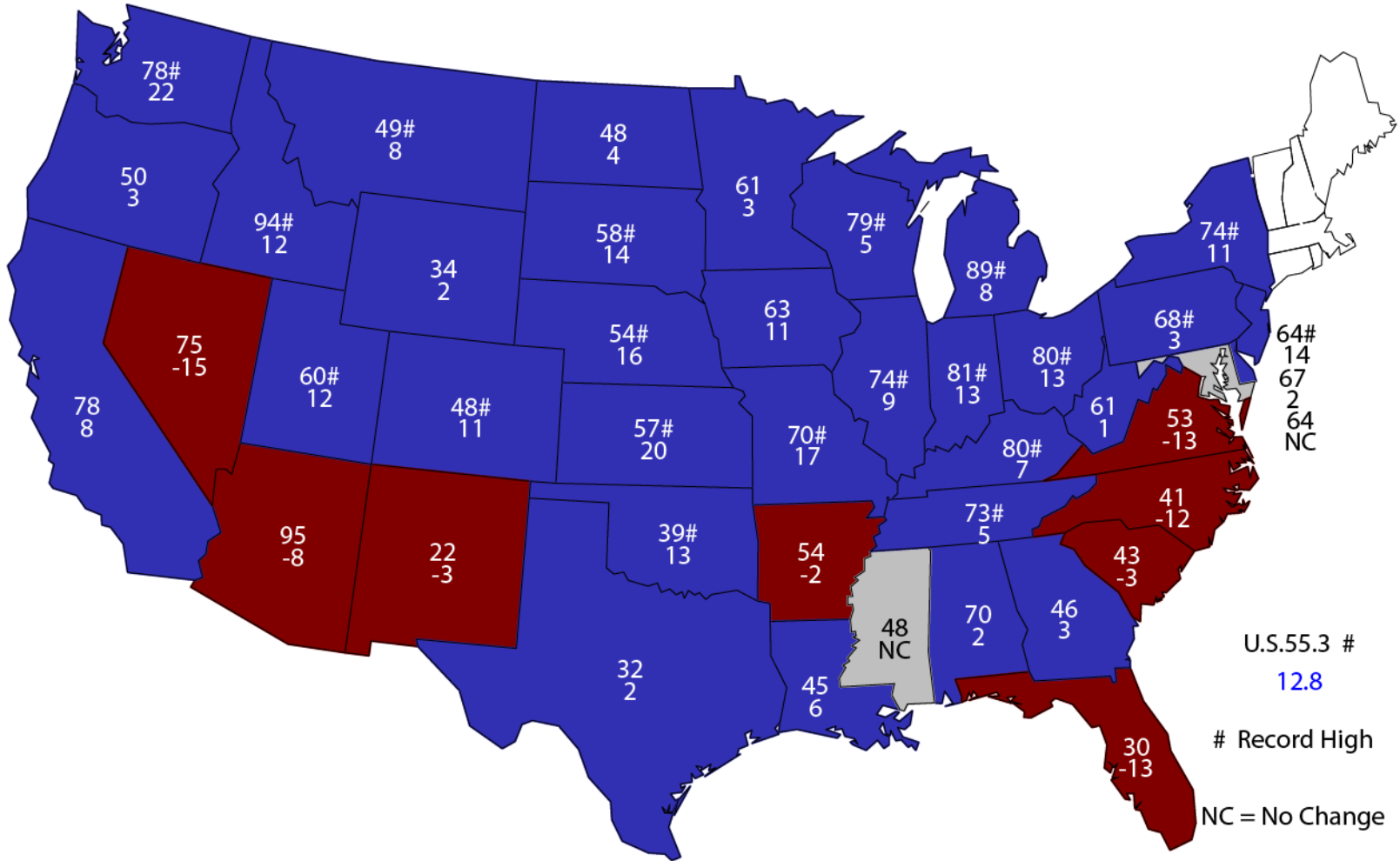
Winter Wheat Yield United States

Bushels per Acre



2016 Winter Wheat Yield

Bushels and Change From Previous Year





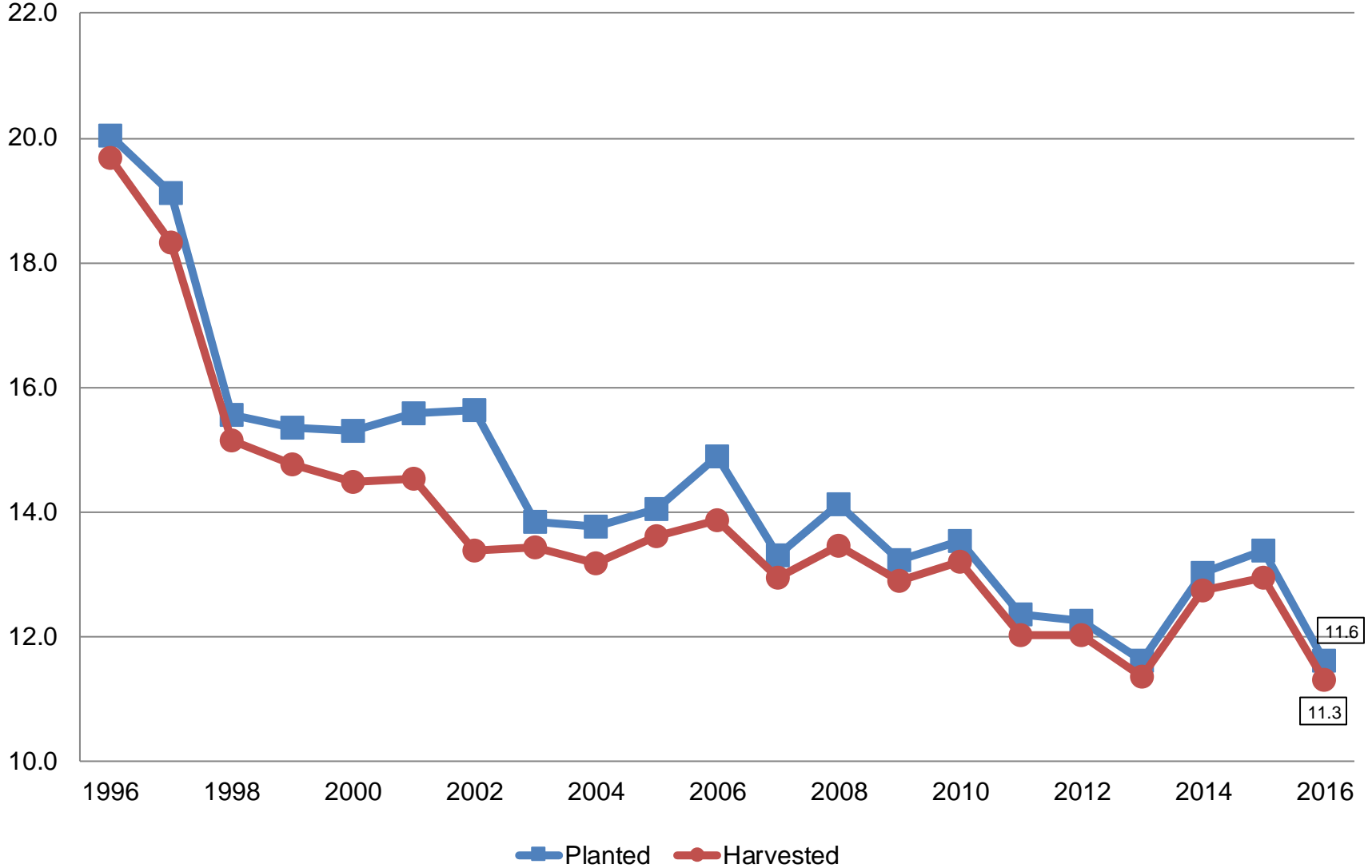
Small Grains Annual Summary

Crop	Unit	September 2016	% Change From Previous Estimate	% Change From Previous Season
Wheat, Spring				
Planted	Mil Ac	11.6	-4.4	-13.2
Harvested	Mil Ac	11.3	-4.5	-13.5
Yield	Bu/Ac	47.2	-2.3	+2.2
Production	Mil Bu	534	-6.5	-11.5



Other Spring Wheat Acres United States

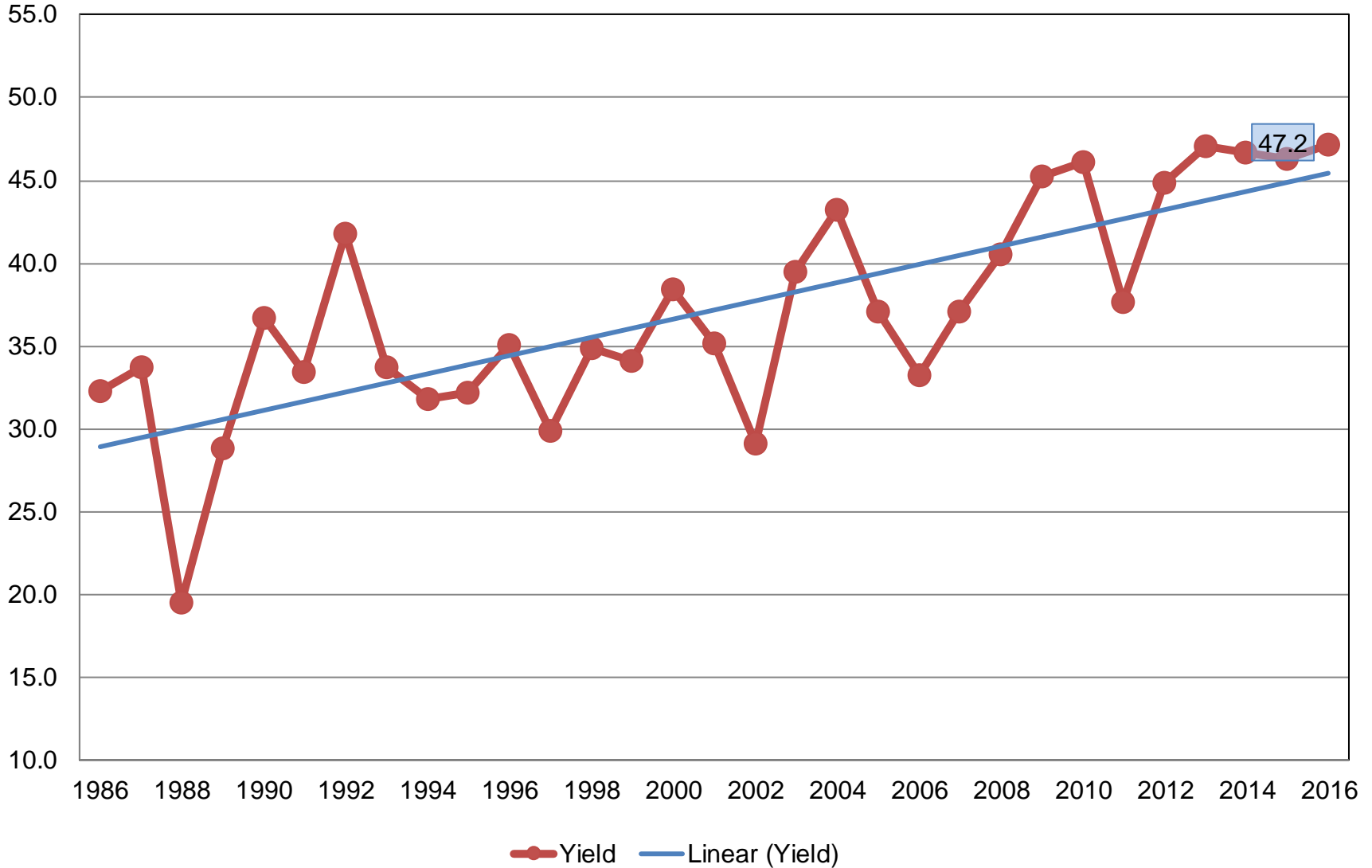
Million Acres





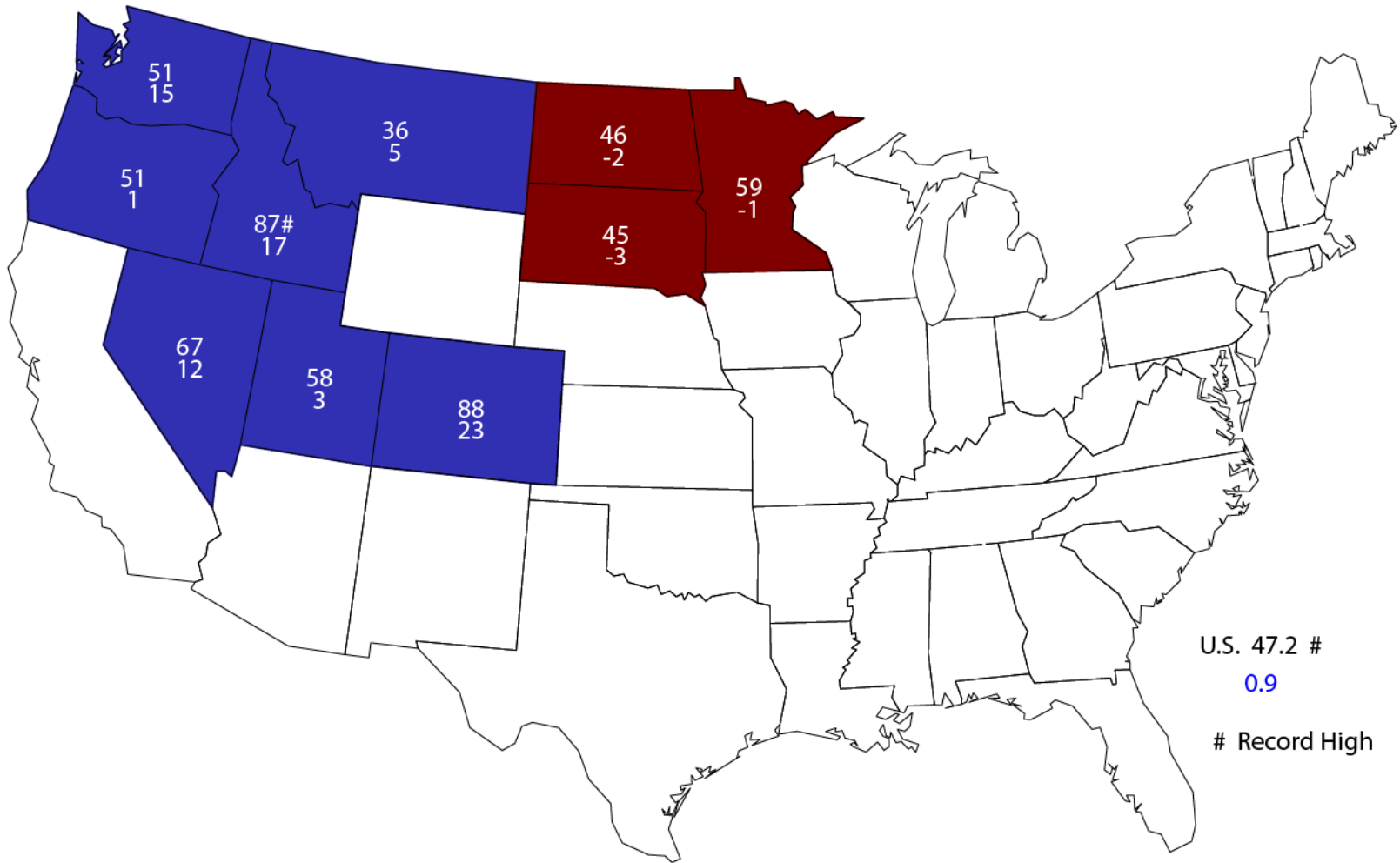
Other Spring Wheat Yield United States

Bushels per Acre



2016 Other Spring Wheat Yield

Bushels and Change From Previous Year



U.S. 47.2 #

0.9

Record High



Small Grains Annual Summary

Crop	Unit	September 2016	% Change From Previous Estimate	% Change From Previous Season
Wheat, Durum				
Planted	Mil Ac	2.41	+12.4	+23.6
Harvested	Mil Ac	2.37	+13.6	+23.8
Yield	Bu/Ac	44.0	-0.2	NC
Production	Mil Bu	104	+13.5	+23.9



Durum Wheat Acres

United States

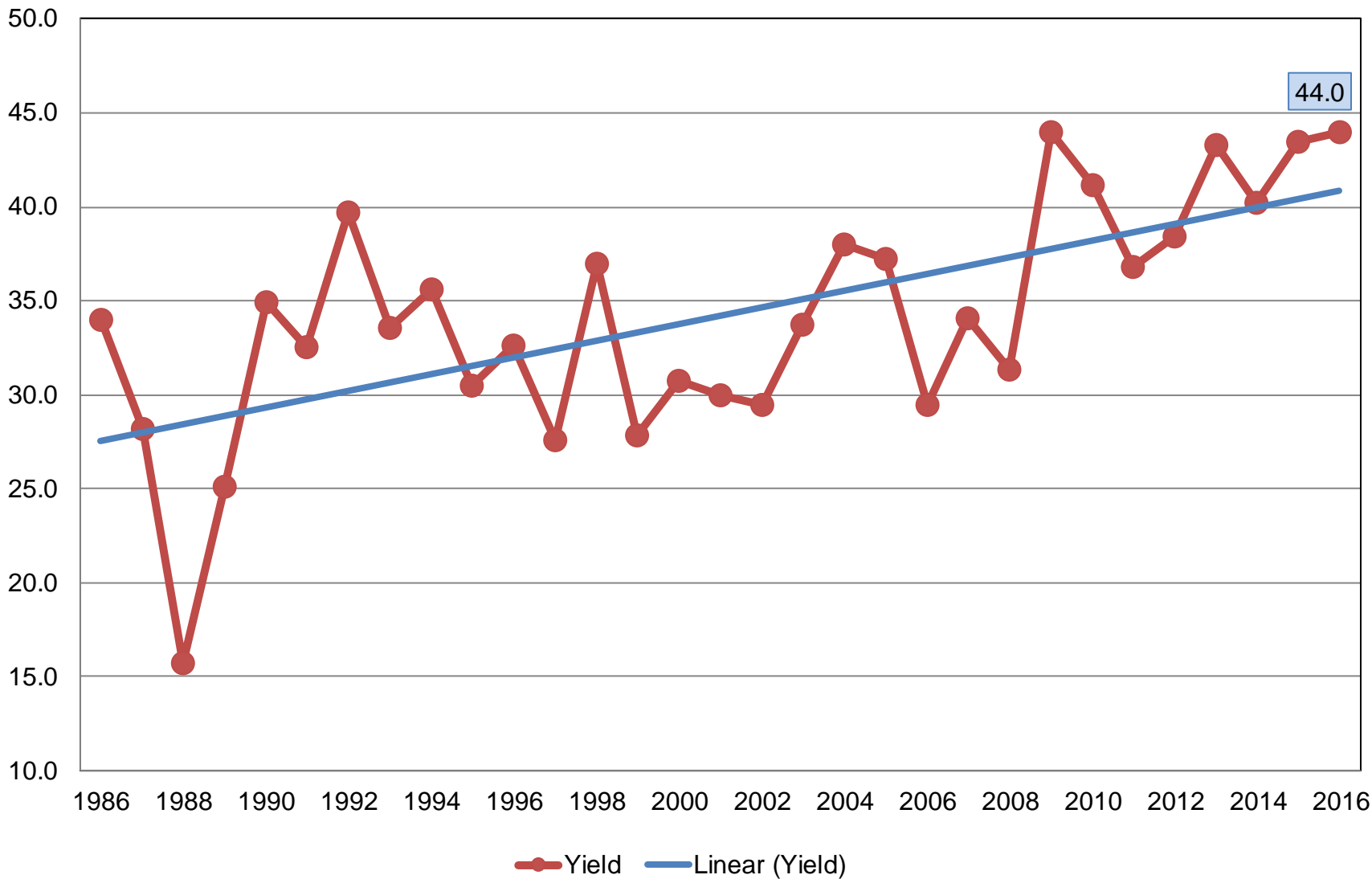
Million Acres



Durum Wheat Yield

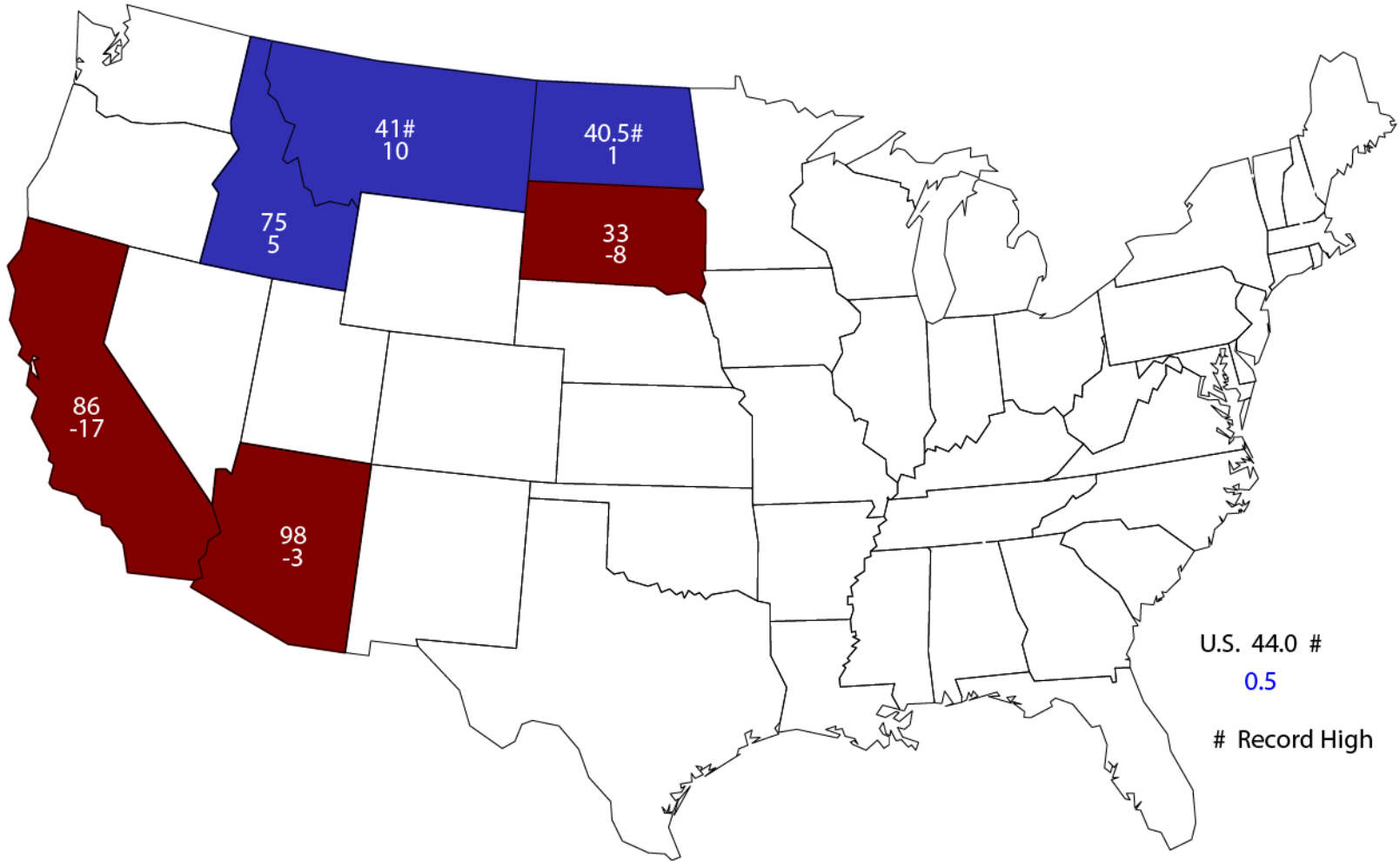
United States

Bushels per Acre



2016 Durum Wheat Yield

Bushels and Change From Previous Year



U.S. 44.0 #

0.5

Record High



Small Grains Annual Summary

Crop	Unit	September 2016	% Change From Previous Estimate	% Change From Previous Season
Wheat, All				
Planted	Mil Ac	50.2	-1.3	-8.8
Harvested	Mil Ac	43.9	-0.5	-7.2
Yield	Bu/Ac	52.6	NC	+20.6
Production	Bil Bu	2.31	-0.5	+12.0



Small Grains Annual Summary

Crop	Unit	September 2016	% Change From Previous Estimate	% Change From Previous Season
Barley				
Planted	Mil Ac	3.05	+2.9	-15.8
Harvested	Mil Ac	2.56	-0.8	-19.0
Yield	Bu/Ac	77.9	+5.8	+12.7
Production	Mil Bu	199	+5.1	-8.7



Small Grains Annual Summary

Crop	Unit	September 2016	% Change From Previous Estimate	% Change From Previous Season
Oats				
Planted	Mil Ac	2.83	-6.6	-8.4
Harvested	Mil Ac	0.981	-15.8	-23.1
Yield	Bu/Ac	66.0	NC	-6.0
Production	Mil Bu	64.8	-15.7	-27.7
Stocks	Mil Bu	78.7	NA	-16.1



Small Grains Annual Summary

Crop	Unit	September 2016	% Change From Previous Estimate	% Change From Previous Season
Rye				
Planted	Mil Ac	1.89	+7.4	+19.4
Harvested	Mil Ac	0.414	-6.5	+13.4
Yield	Bu/Ac	32.5	NA	+2.2
Production	Mil Bu	13.5	NA	+15.8



Percent of Acres Left to be Harvested

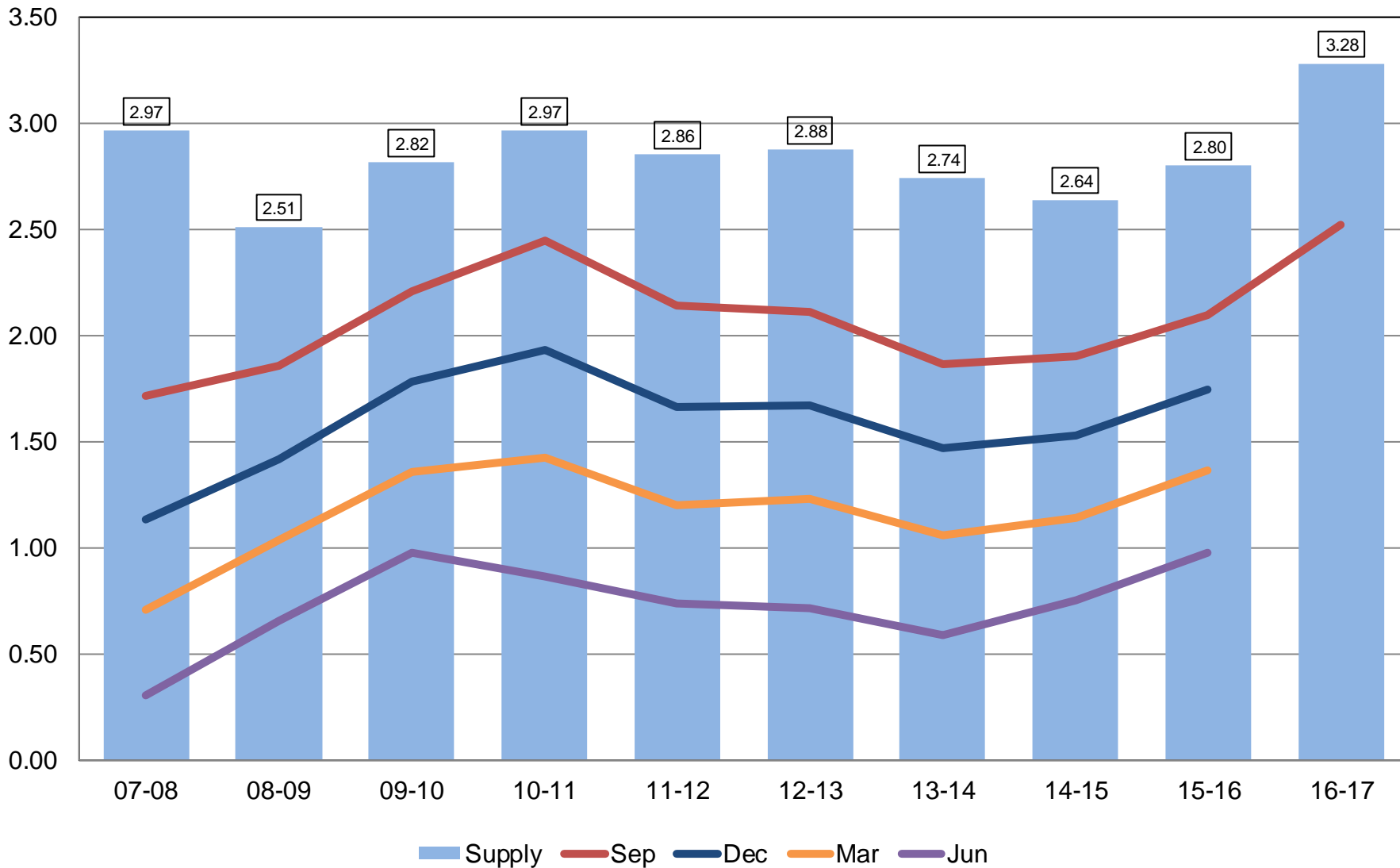
United States

Crop	2014	2015	2016
	<i>Percent</i>		
Other Spring Wheat	49.7	4.8	8.4
Durum Wheat	70.0	9.2	17.0
Barley	23.6	3.0	5.7
Oats	26.7	8.6	7.7



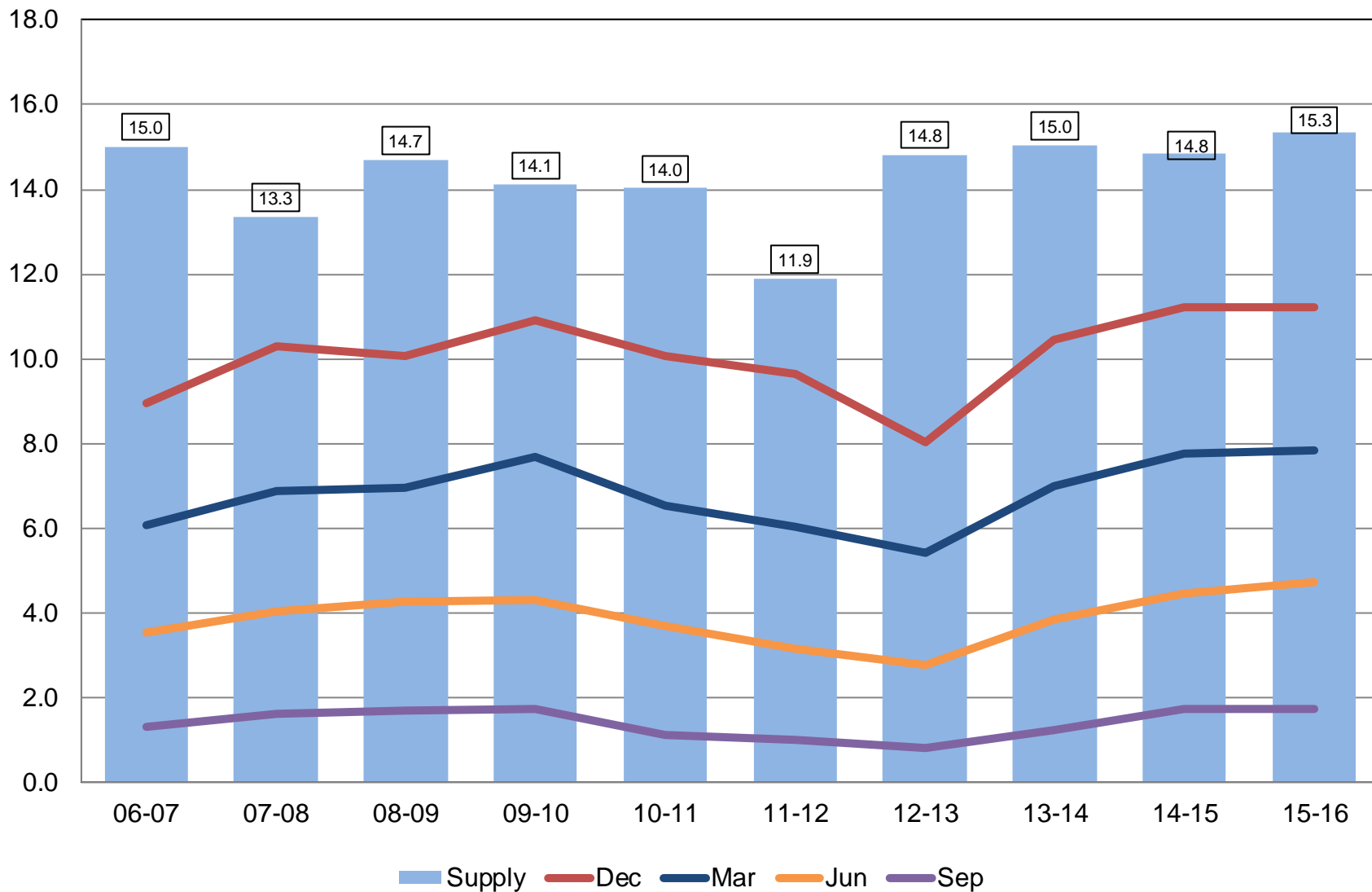
All Wheat Stocks United States

Billion Bushels



Corn Stocks United States

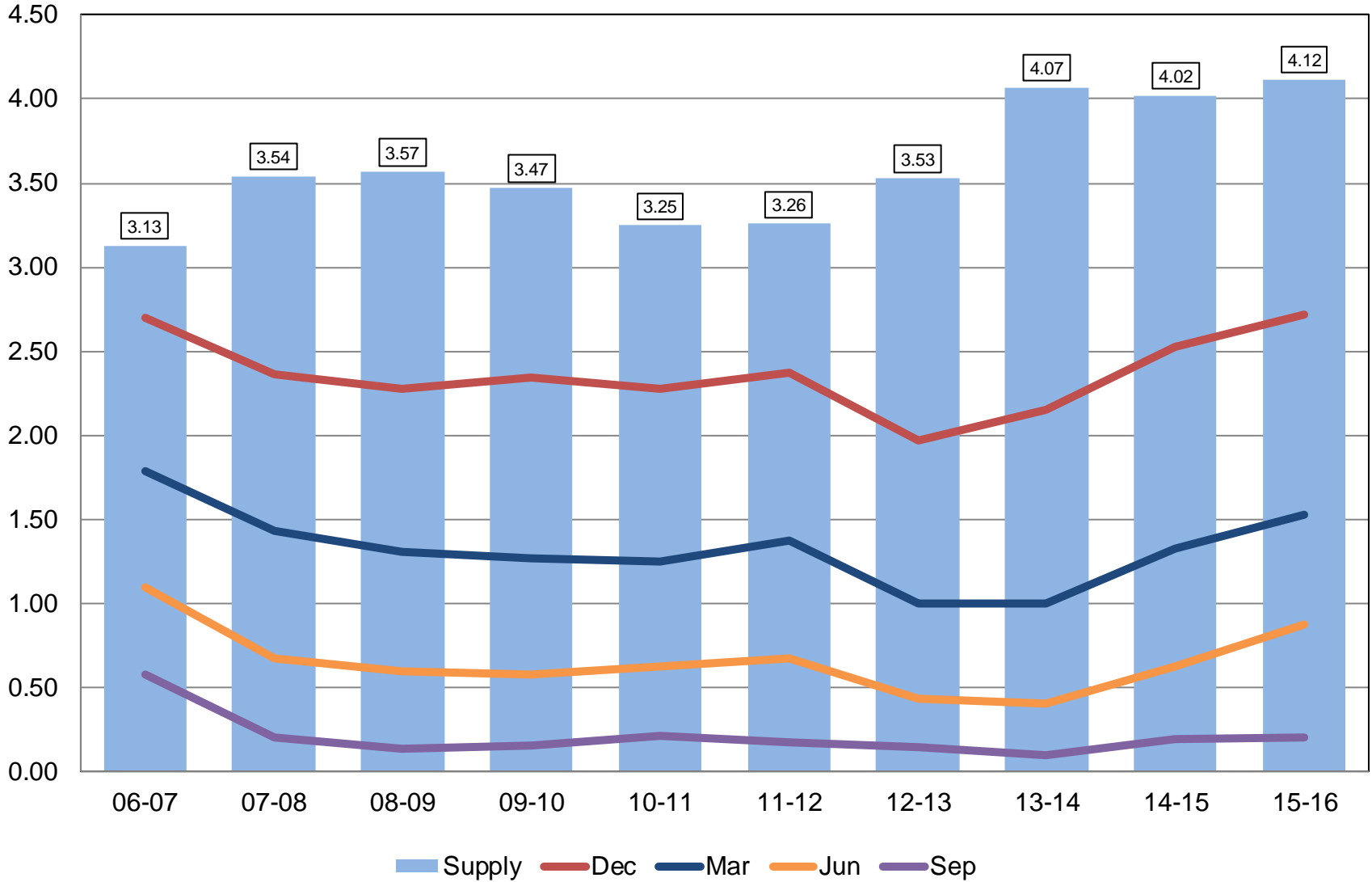
Billion Bushels





Soybean Stocks United States

Billion Bushels





2015 Soybean Crop

	Previous Estimates	Sept 30 Estimates	Change
	<i>Million Bushels</i>		
Sept 1, 2015 Beginning Stocks	191	191	NC
2015 Production	3,929	3,926	-3
Imports	*25	*25	NC
Total Supply	4,145	4,142	-3
Crushings	*1,900	*1,900	NC
Exports	*1,940	*1,940	NC
Seed	*97	*97	NC
Measured Disappearance	*3,937	*3,937	NC
Ending Stocks	*195	197	+2
Residual	*12	8	-4

*WAOB Forecast – September WASDE Report



September 1, 2016 Grain Stocks

Crop	Unit	September 2016	% Change From Previous Estimate	% Change From Previous Year
Stocks				
Barley	Mil Bu	230	NA	+5.0
Oats	Mil Bu	78.7	NA	-16.1
Sorghum	Mil Bu	36.6	NA	+99.0



September 1, 2016 Oilseed Stocks

Crop	Unit	September 2016	% Change From Previous Estimate	% Change From Previous Year
Stocks				
All Sunflower	Mil Lbs	414	NA	+74.4
Safflower	Mil Lbs	15.1	NA	-12.2



Upcoming Reports

Release Date	Report Title
October 1	CAIR: Cotton CAIR: Grain Crushings CAIR: Fats & Oils
October 12	Crop Production Cotton Ginnings
October 18	Data Users Meeting
October 21	Cattle on Feed
October 24	Cotton Ginnings
October 28	Rice Stocks
October 31	Ag Prices



United States Department of Agriculture
National Agricultural Statistics Service

All Reports Available At
www.nass.usda.gov

For Questions
202-720-2127
800-727-9540
nass@nass.usda.gov