



United States Department of Agriculture
National Agricultural Statistics Service

September Crop Production
Executive Summary

Lance Honig, Chief
Crops Branch



Contents

Field Crops	Fruit & Nuts	Specialty Crops
Corn	Navel Oranges (CA)	Tobacco
Soybeans	Hazelnuts	Sugarbeets
Cotton	Walnuts	Sugarcane
Rice		Dry Edible Peas
Peanuts		Lentils
Sorghum		Austrian Winter Peas



Survey Overview

	Ag Yield	Objective Yield
Survey Type	Farmer Reported	Field Measurement
Crops Included	Field Crops	Corn, Cotton, Soybeans
Sample Size	10,170	4,952
Collection Period	Aug 29 – Sept 6	Aug 25 – Sept 1



September 2017 Crop Production

Many crops have been significantly impacted by Hurricanes Harvey and Irma and the subsequent flooding. USDA's National Agricultural Statistics Service (NASS) will collect harvested acreage information for a number of crops in affected states in preparation for the October *Crop Production* report. These additional data will help to better assess the full impact. If the newly collected data justifies any changes, NASS will publish updated harvested acreage estimates in the October 12 report.

Harvested acreage information will be collected from all producers surveyed in **Alabama** for Upland cotton, peanuts, and soybeans; in **Florida** for Upland cotton, peanuts, and soybeans; in **Georgia** for Upland cotton, peanuts, and soybeans; in **Louisiana** for corn, Upland cotton, rice, sorghum, soybeans, and sugarcane; in **South Carolina** for Upland cotton, peanuts, and soybeans; and in **Texas** for corn, Upland cotton, alfalfa hay, other hay, rice, sorghum, and soybeans.



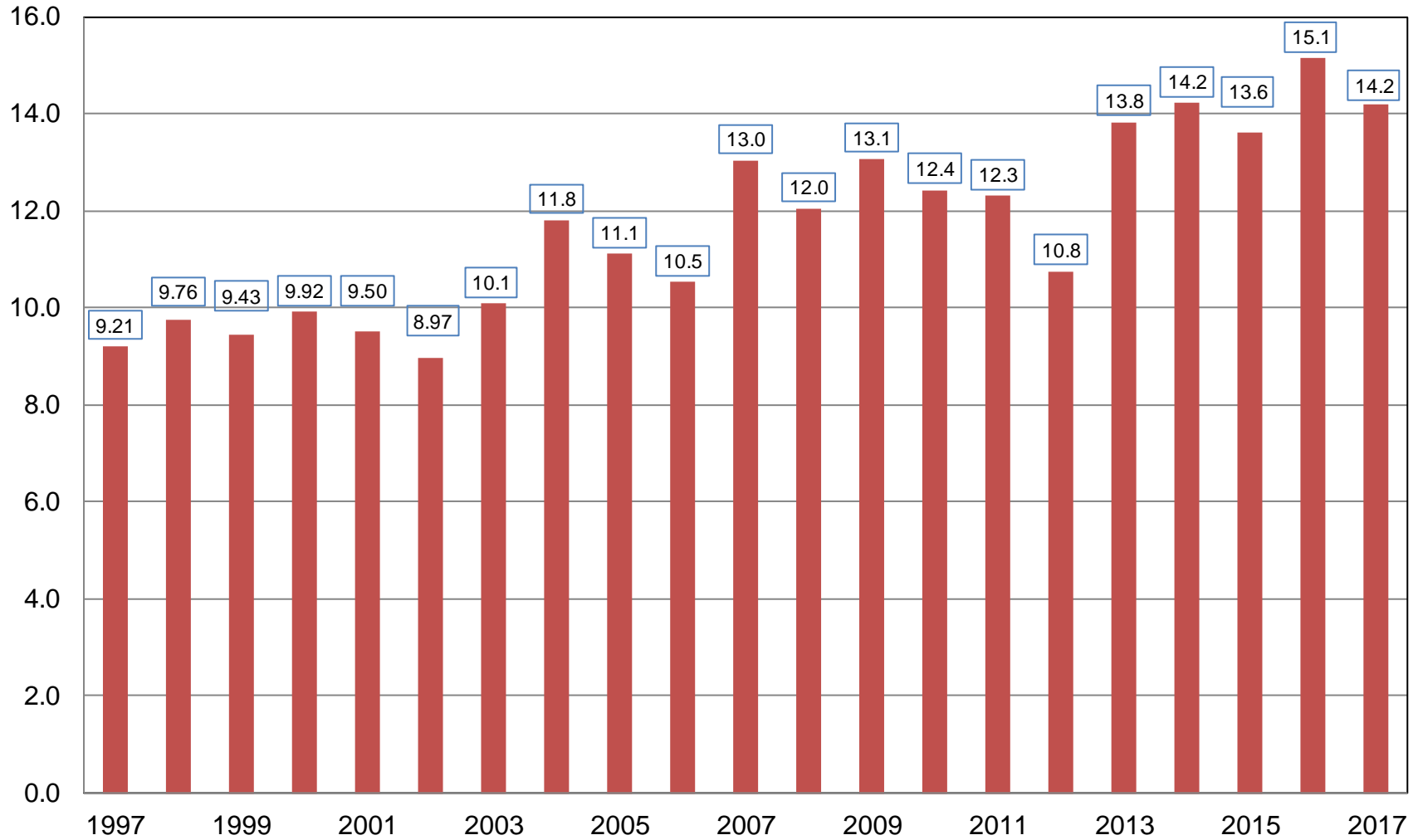
September 2017 Crop Production

Crop	Unit	September 2017	% Change From Previous Estimate	% Change From Previous Season
Corn				
Planted	Mil Ac	90.9	NC	-3.3
Harvested	Mil Ac	83.5	NC	-3.7
Yield	Bu/Ac	169.9	+0.2	-2.7
Production	Bil Bu	14.2	+0.2	-6.4



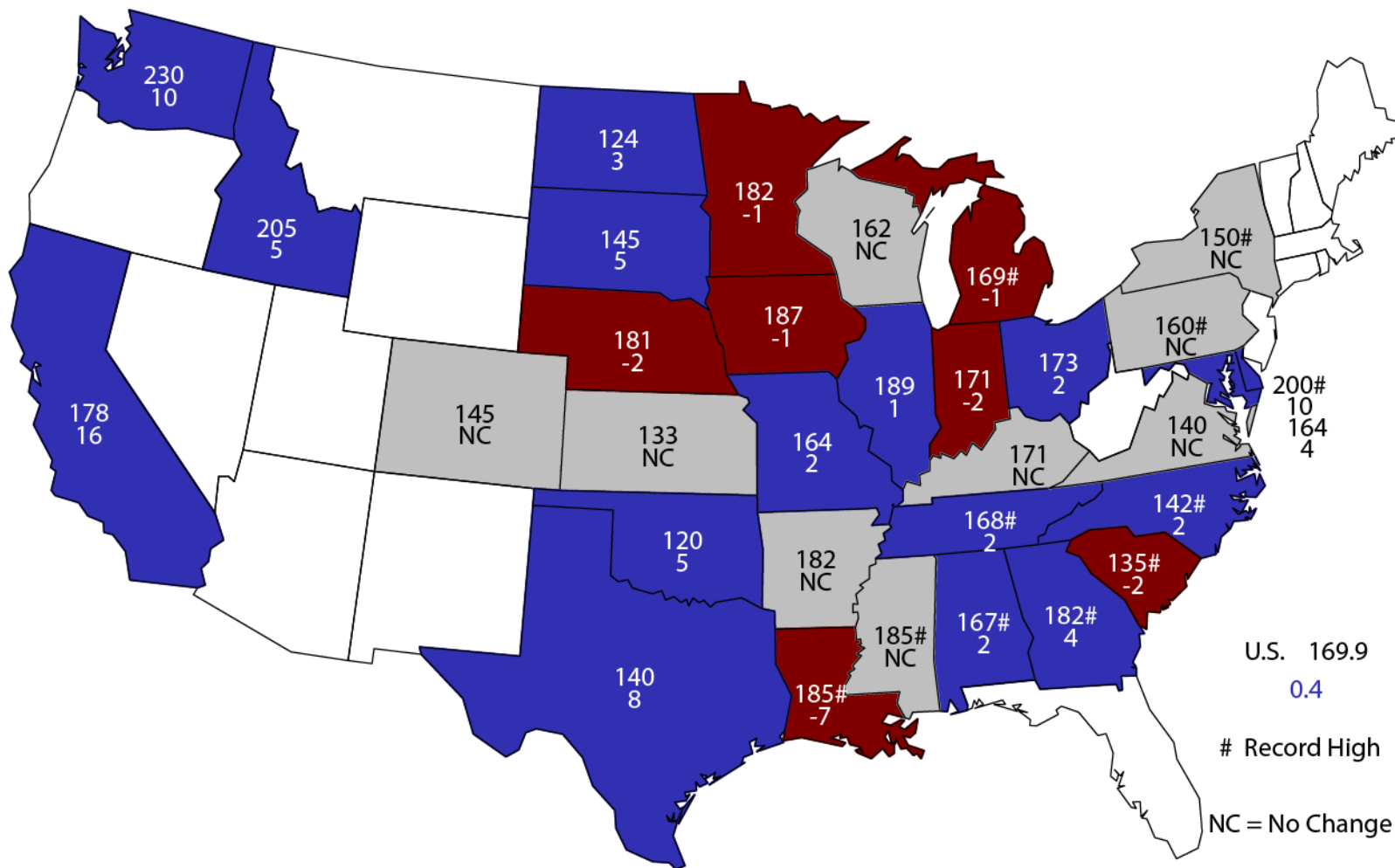
Corn for Grain Production United States

Billion Bushels



September 1, 2017 Corn Yield

Bushels and Change From Previous Forecast



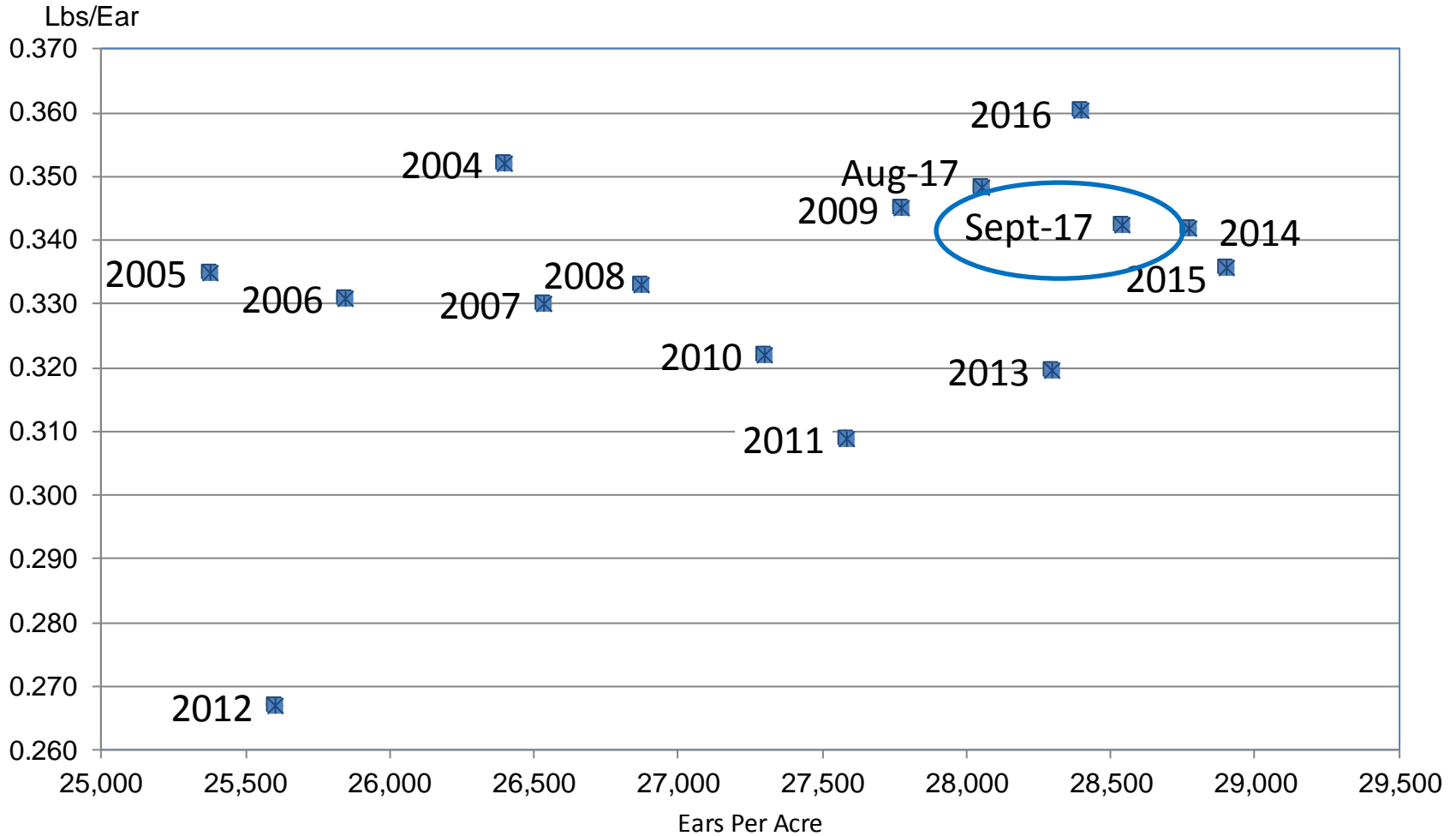
U.S. 169.9
0.4

Record High
NC = No Change



Corn Objective Yield Region

Ears Per Acre vs. Implied Ear Weight



Implied Ear Weight = (Published Yield * 56) / Ears



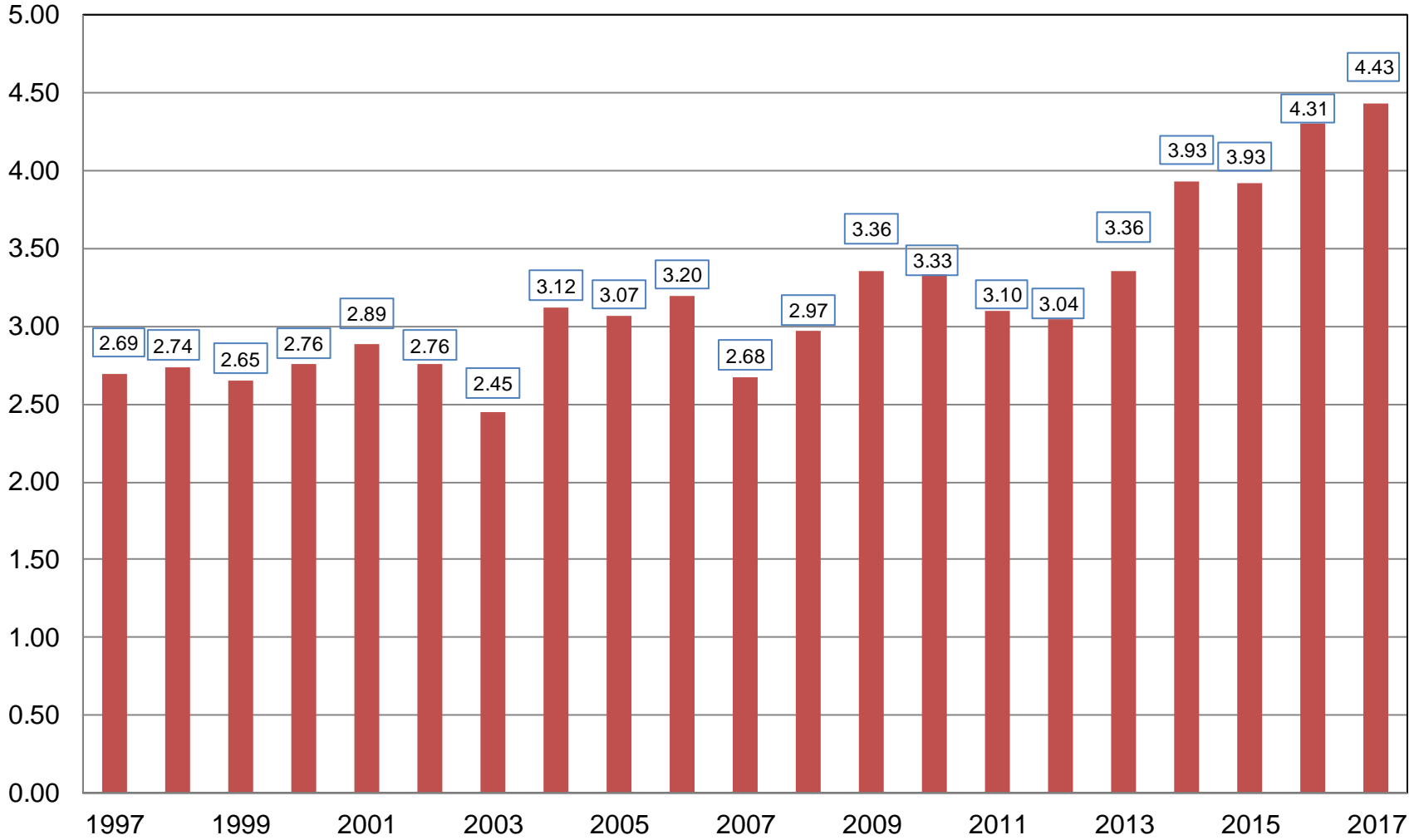
September 2017 Crop Production

Crop	Unit	September 2017	% Change From Previous Estimate	% Change From Previous Season
Soybeans				
Planted	Mil Ac	89.5	NC	+7.3
Harvested	Mil Ac	88.7	NC	+7.2
Yield	Bu/Ac	49.9	+1.0	-4.2
Production	Bil Bu	4.43	+1.1	+2.9



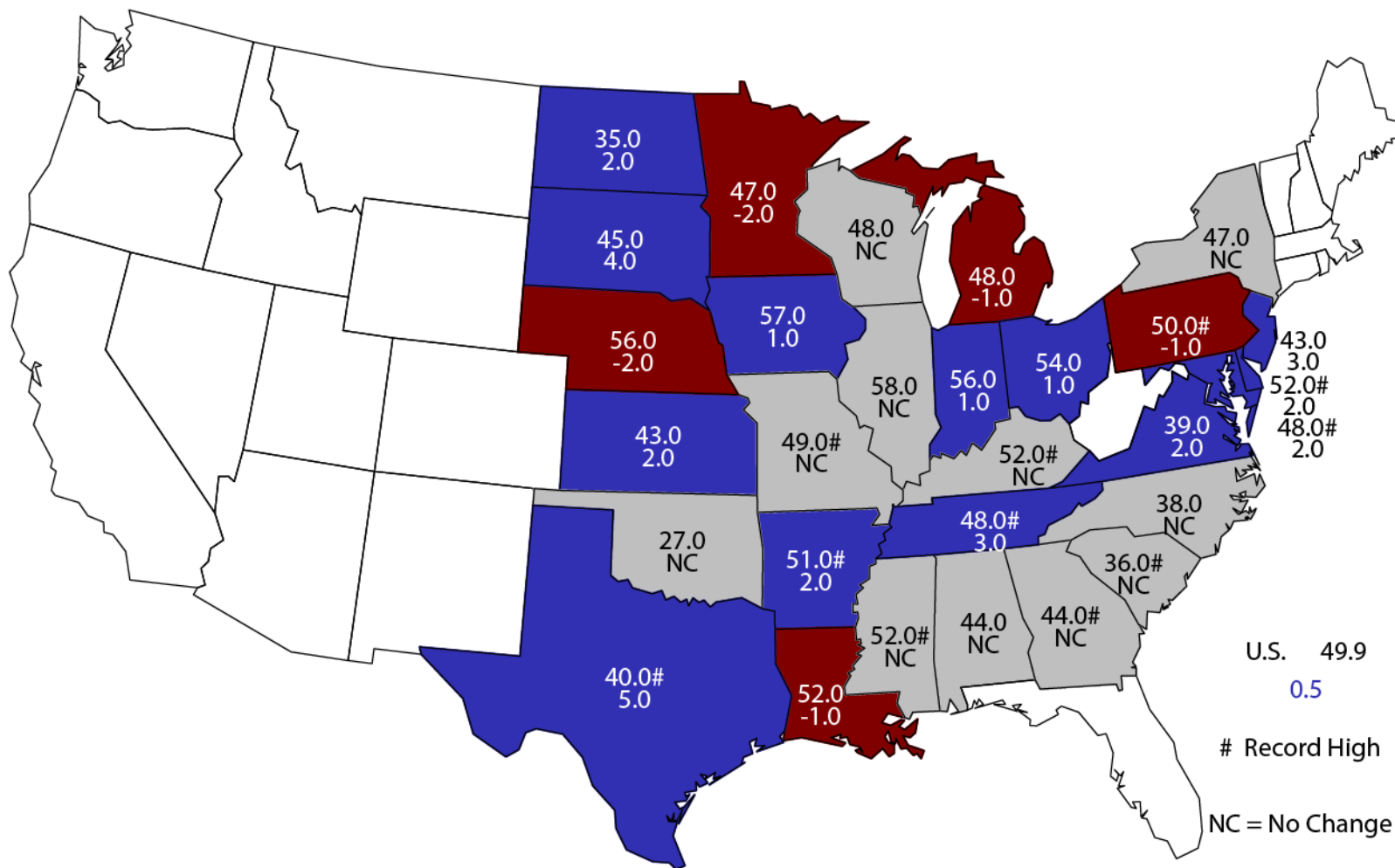
Soybean Production United States

Billion Bushels



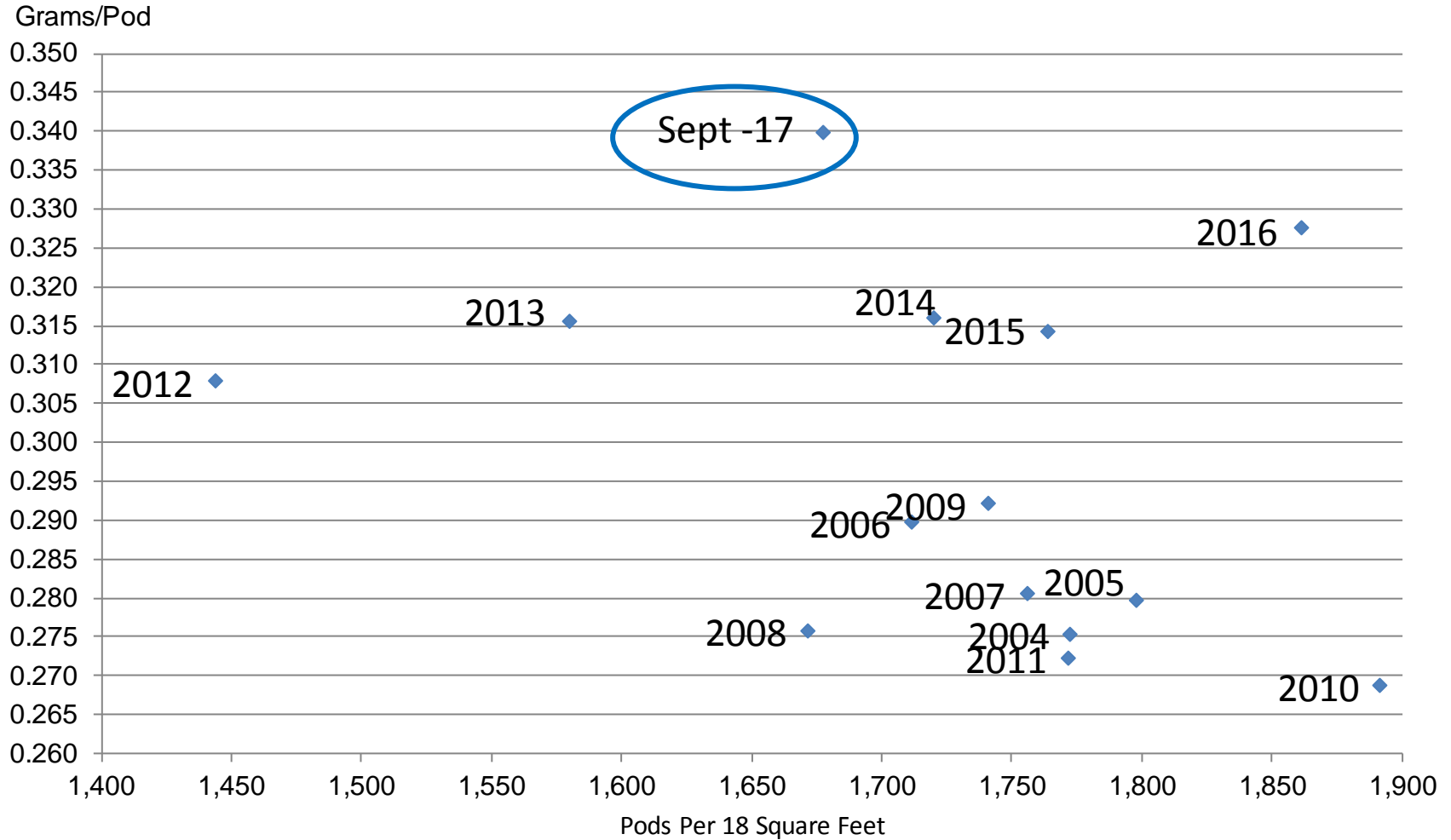
September 1, 2017 Soybean Yield

Bushels and Change From Previous Month



Soybean Objective Yield Region

Pods Per 18 Square Feet vs. Implied Pod Weight



Implied Pod Weight = (Published Yield / Pods) / 0.0889

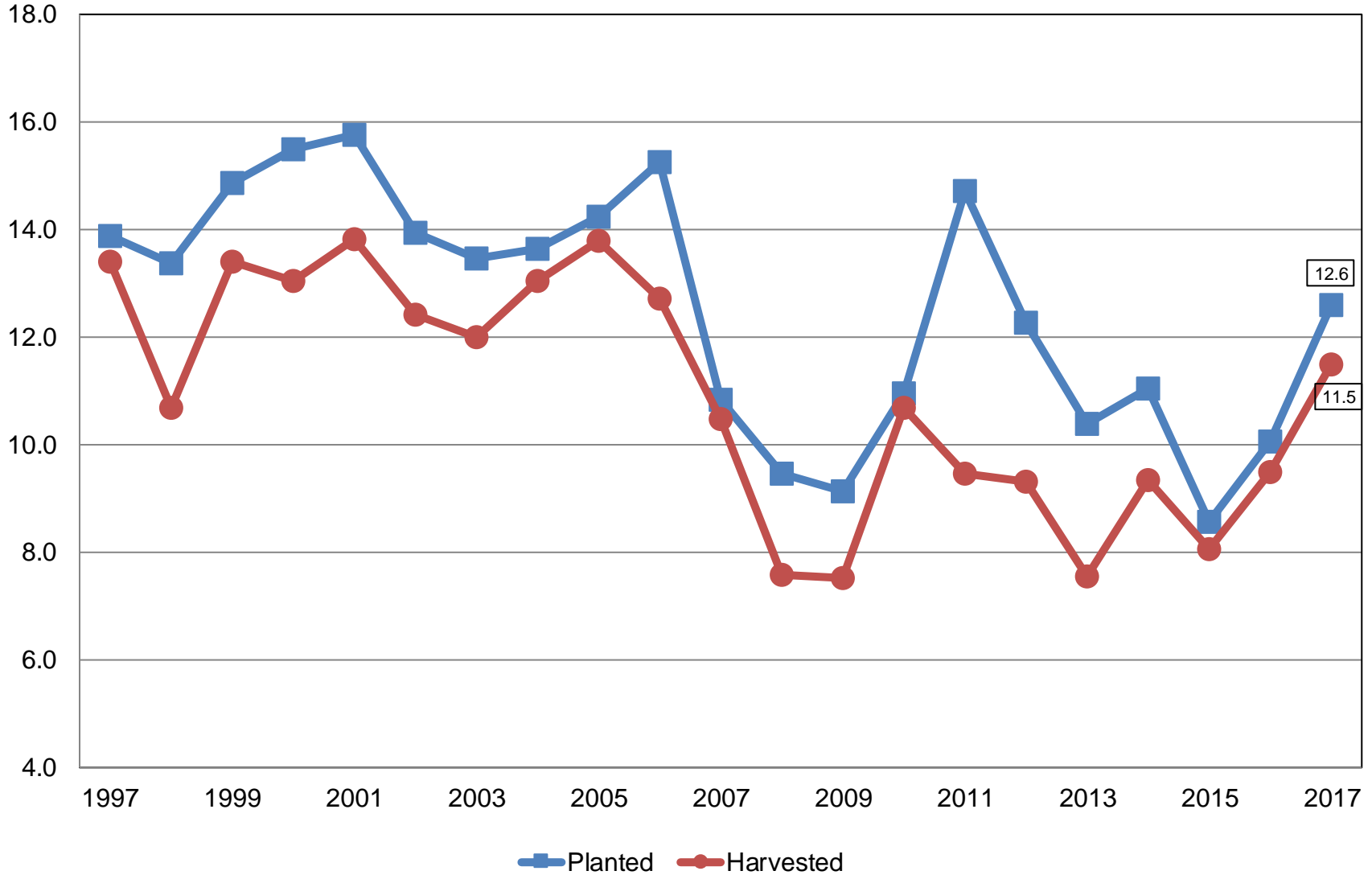


September 2017 Crop Production

Crop	Unit	September 2017	% Change From Previous Estimate	% Change From Previous Season
All Cotton				
Planted	Mil Ac	12.6	+4.7	+25.3
Harvested	Mil Ac	11.5	+4.1	+21.0
Yield	Lb/Ac	908	+1.8	+4.7
Production	Mil Bls	21.8	+5.9	+26.7

All Cotton Acres United States

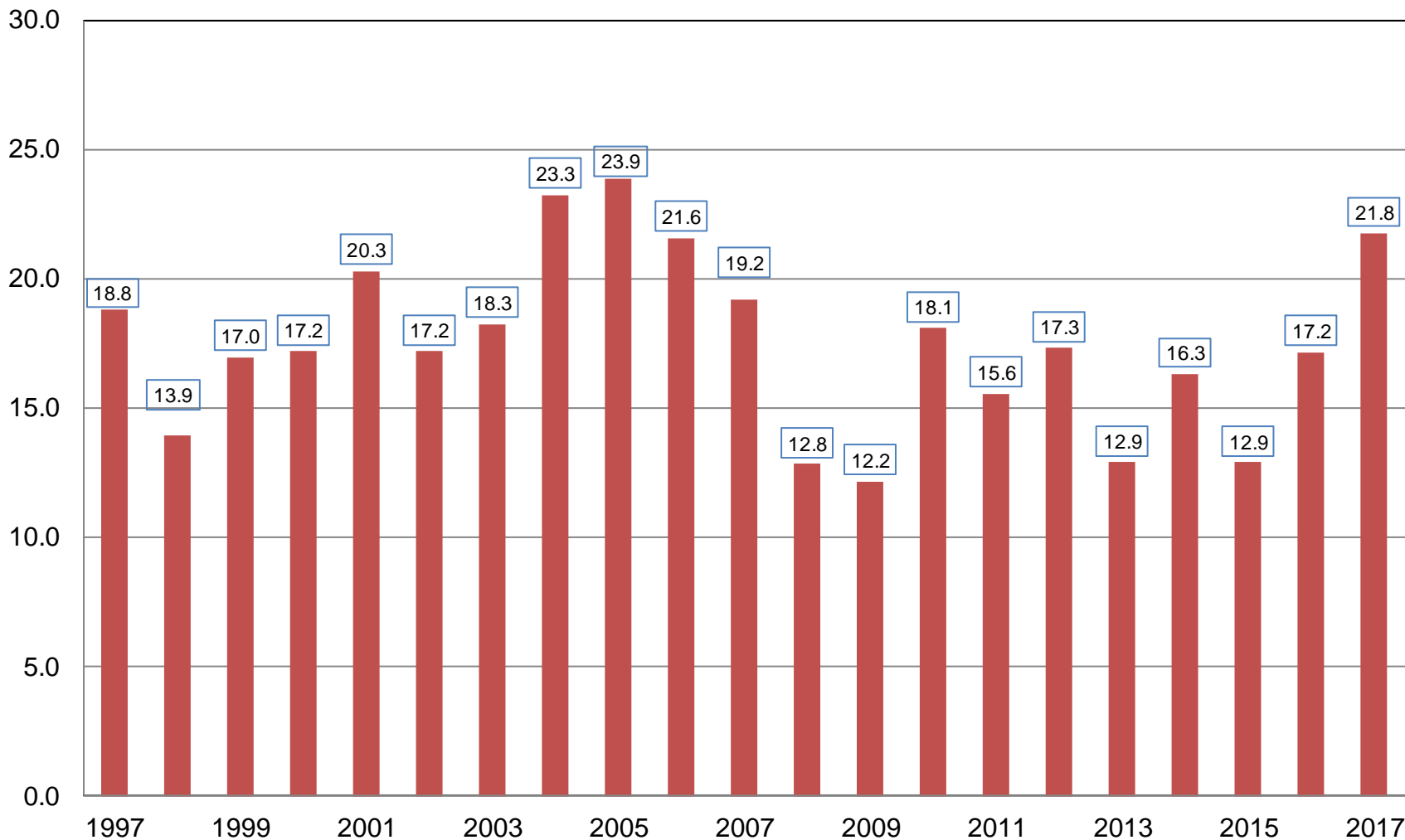
Million Acres





All Cotton Production United States

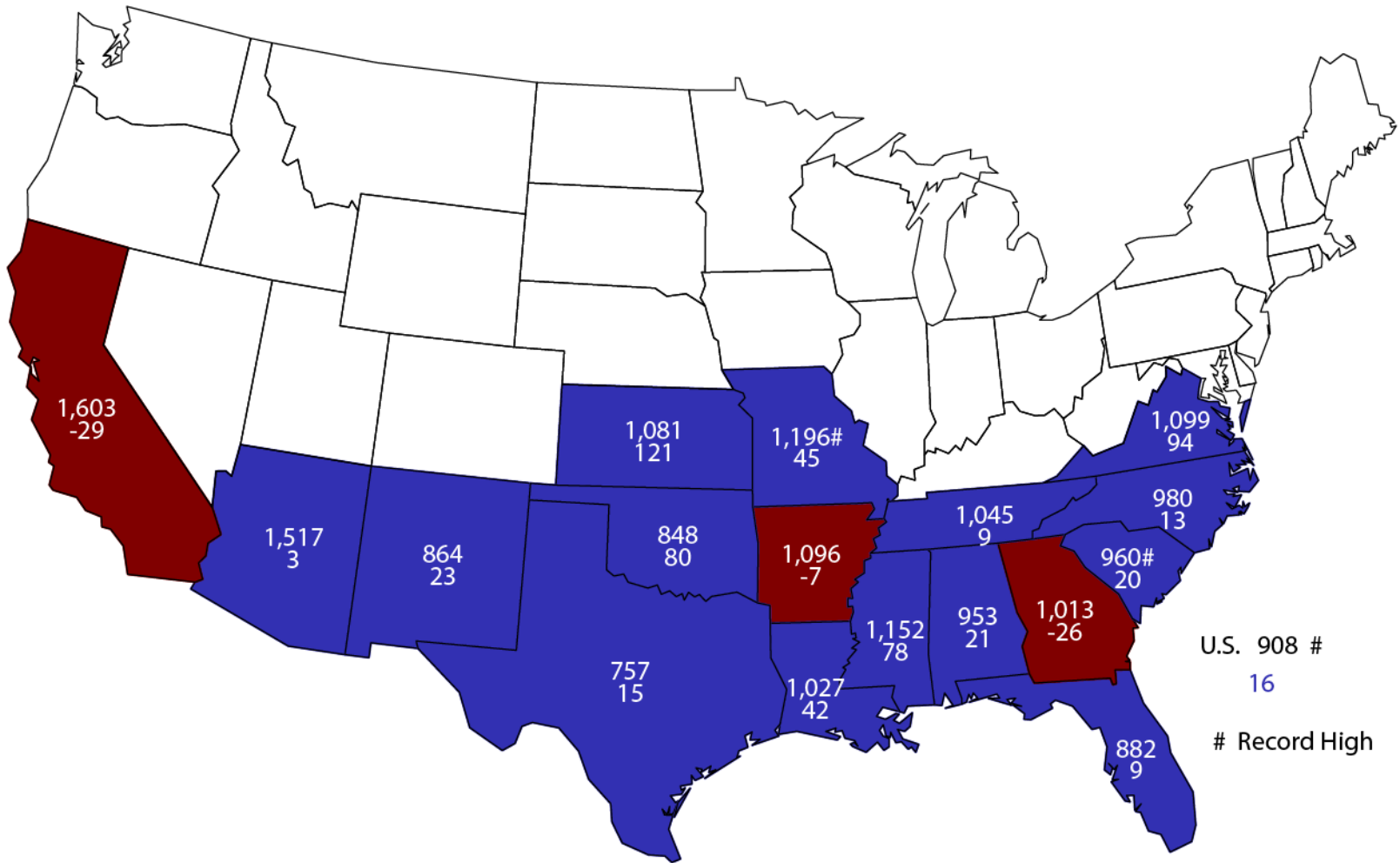
Million Bales





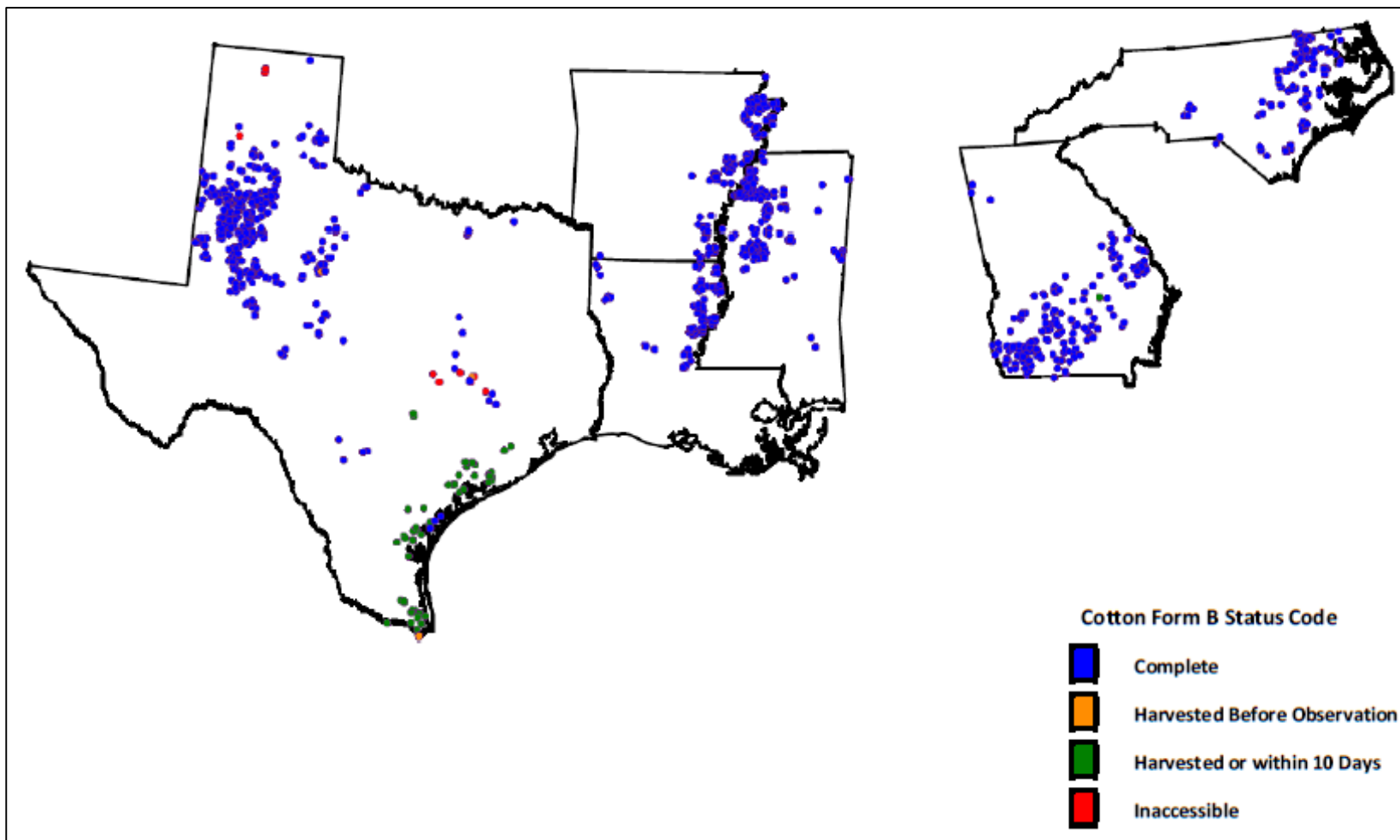
September 1, 2017 All Cotton Yield

Pounds and Change From Previous Forecast



U.S. 908 #
16
Record High

September 2017 Cotton OY Segment Center Points





September 2017 Crop Production

Crop	Unit	September 2017	% Change From Previous Estimate	% Change From Previous Season
Rice				
Planted	Mil Ac	2.49	-2.9	-21.0
Harvested	Mil Ac	2.40	-3.5	-22.7
Yield	Lbs/Ac	7,504	-0.1	+3.7
Production	Mil Cwt	180	-3.6	-19.8



September 2017 Crop Production

Crop	Unit	September 2017	% Change From Previous Estimate	% Change From Previous Season
Peanuts				
Planted	Mil Ac	1.88	+3.5	+12.6
Harvested	Mil Ac	1.83	+3.2	+18.2
Yield	Lbs/Ac	4,254	+1.5	+15.8
Production	Bil Lbs	7.78	+4.7	+36.9



September 2017 Crop Production

Crop	Unit	September 2017	% Change From Previous Forecast	% Change From Previous Season
Sorghum	Mil Bu	371	+0.3	-22.8
All Tobacco	Mil Lbs	723	+4.0	+14.9
Sugarbeets	Mil Tons	36.2	-0.5	-1.9
Sugarcane	Mil Tons	31.8	-0.1	-0.9



September 2017 Crop Production

Crop	Unit	September 2017	% Change From Previous Forecast	% Change From Previous Season
A. Winter Peas	Thou Cwt	139	NA	-70.9
Dry Edible Peas	Mil Cwt	15.4	NA	-44.6
Lentils	Mil Cwt	7.46	NA	-41.2



September 2017 Crop Production

Crop	Unit	September 2017	% Change From Previous Forecast	% Change From Previous Season
Navel Oranges (CA)	Mil Tons	1.40	NA	-10.9
Hazelnuts (OR)	Thou Tons	36.0	NA	-18.2
Walnuts (CA)	Thou Tons	650	NA	-5.2



Upcoming Reports

Release Date	Report Title
September 14	Potatoes
September 20	Certified Organic
September 22	Cattle on Feed
September 28	Ag Prices Hogs and Pigs
September 29	Grain Stocks Small Grains Summary
October 2	CAIR: Cotton System CAIR: Fats & Oils CAIR: Grain Crushings
October 12	Crop Production Cotton Ginnings



USDA NASS Data Users' Meeting

**Tuesday, October 24, 2017
Kansas City, Missouri**

LEARN MORE and REGISTER HERE

https://www.nass.usda.gov/go/Data_Users/

A nighttime photograph of the Kansas City skyline, featuring the illuminated Old Courthouse and a fountain in the foreground.

HELLO
KANSAS CITY



United States Department of Agriculture
National Agricultural Statistics Service



United States Department of Agriculture
National Agricultural Statistics Service

All Reports Available At
www.nass.usda.gov

For Questions
202-720-2127
800-727-9540
nass@nass.usda.gov