



United States Department of Agriculture
National Agricultural Statistics Service

Acreage
Grain Stocks
Rice Stocks

Executive Summary

Lance Honig, Chief
Crops Branch

June 28, 2019

12:00 P.M.



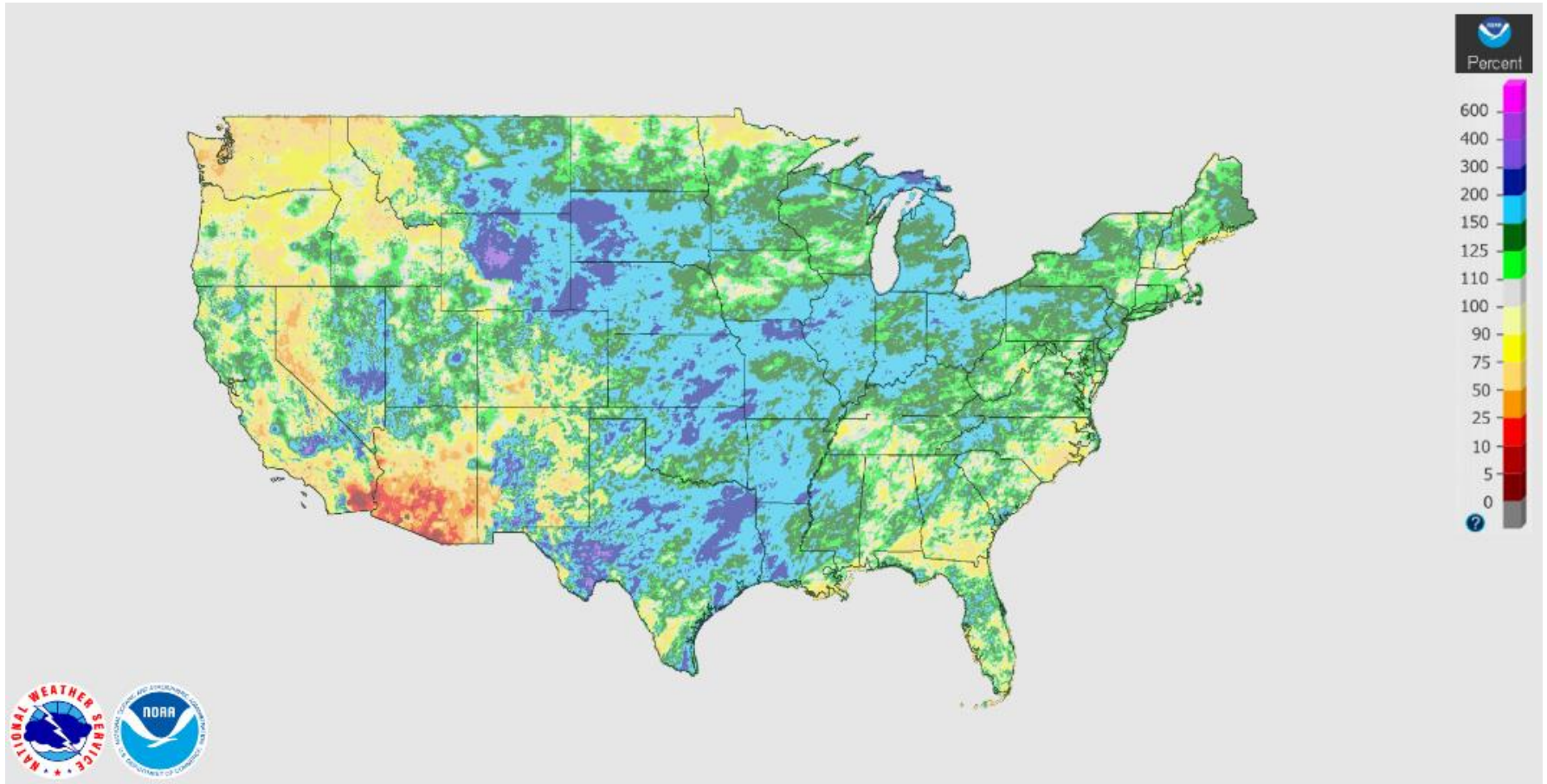
Contents



Field Crops	Stocks
Planted Acres	Corn
Harvested Acres	Soybeans
	Sorghum
	Rice
	All Wheat
	Barley
	Oats
	Dry Peas
	Lentils
	Chickpeas
	Rapeseed
	Canola
	Flaxseed
	Rye

Precipitation: March 30-June 26

Percent of Normal



Survey Overview

	June APS	June Area	Off-Farm Grain Stock Survey
Survey Type	Farmer Reported	Farmer Reported	Reported
Collection Method	Mail, Phone, Internet, Personal Interview	Personal Interview	Mail, Phone, Internet, Personal Interview
Crops Included	Field Crops	Field Crops	Grains and Oilseeds On Hand
States	All Except HI	All Except AK and HI	All Except AK, HI, and NV
Sample Size	68,093 Farms	9,045 Segments	~ 8,500 Facilities
Collection Period	May 30 – June 17	May 30 – June 14	May 30 – June 18



Principal Crops Planted Acreage

United States

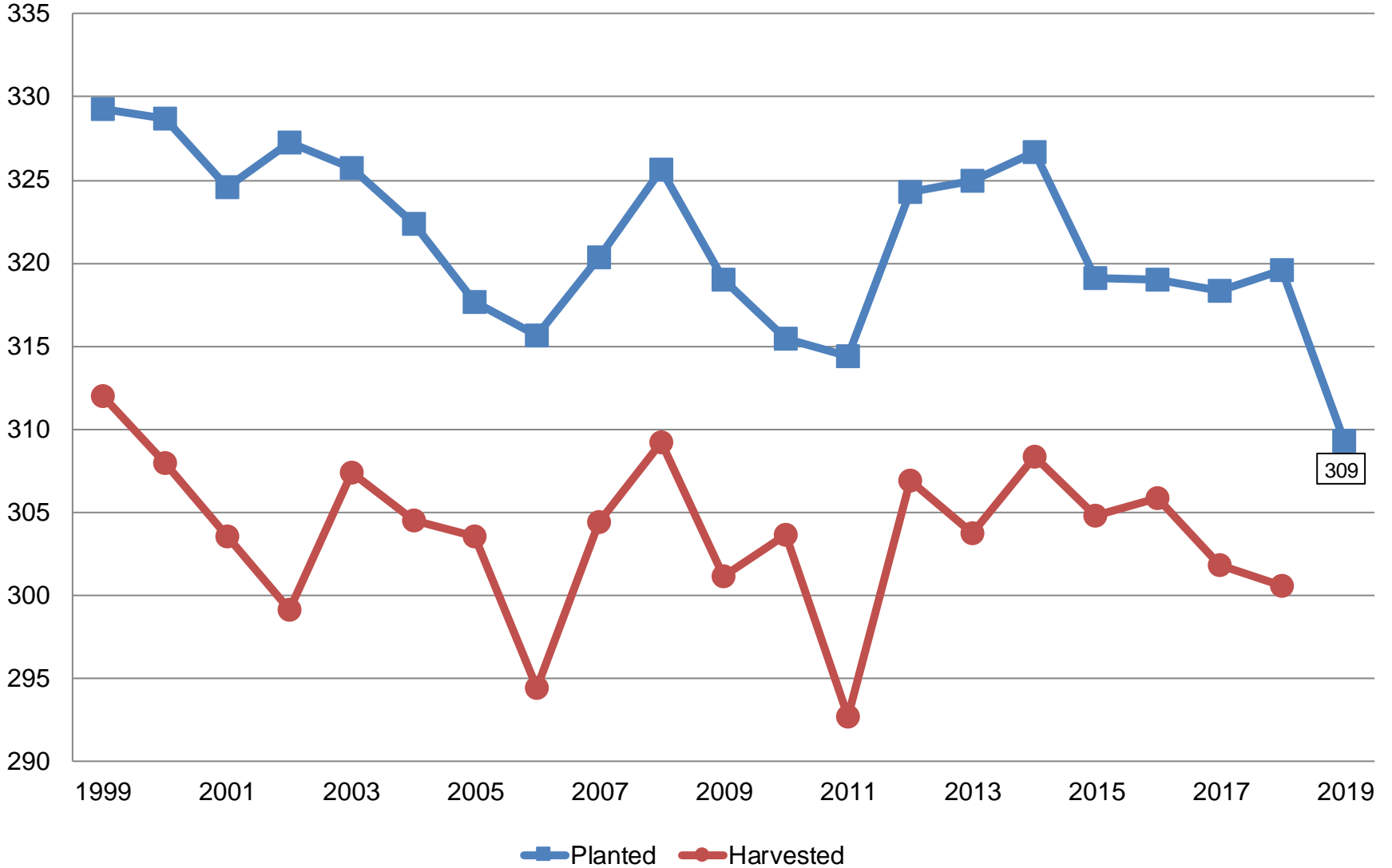
Year	Principal Crops	Change From Previous Year
	<i>Million Acres</i>	
2010	315.4	-3.6
2011	314.3	-1.1
2012	324.3	+10.0
2013	324.9	+0.6
2014	326.7	+1.7
2015	319.0	-7.6
2016	319.0	-0.1
2017	318.3	-0.6
2018	319.6	+1.2
2019	309.3	-10.3



Principal Crops

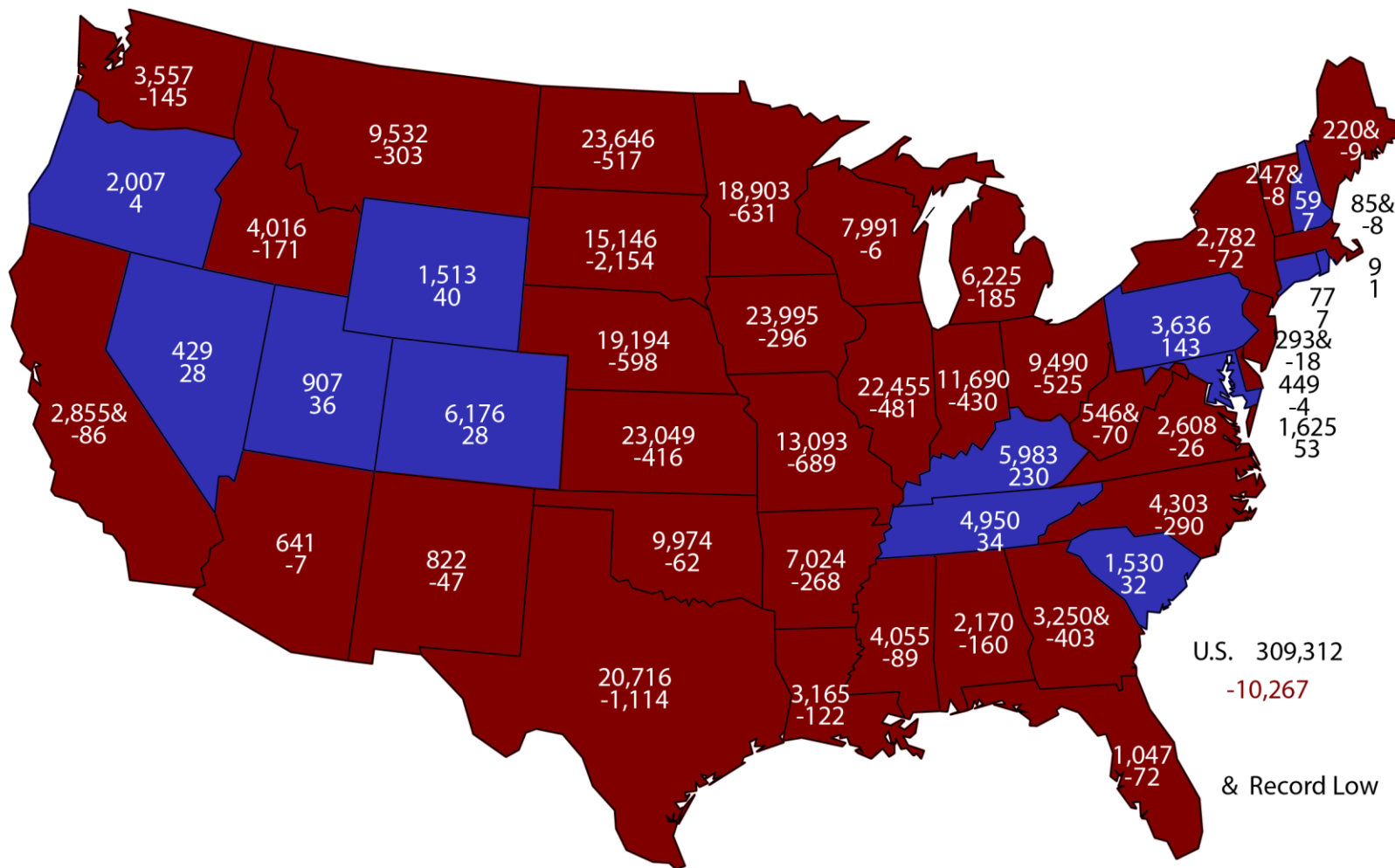
United States

Million Acres



2019 Principal Crops Planted Area

(000) Acres and Change From Previous Year



U.S. 309,312
-10,267
& Record Low



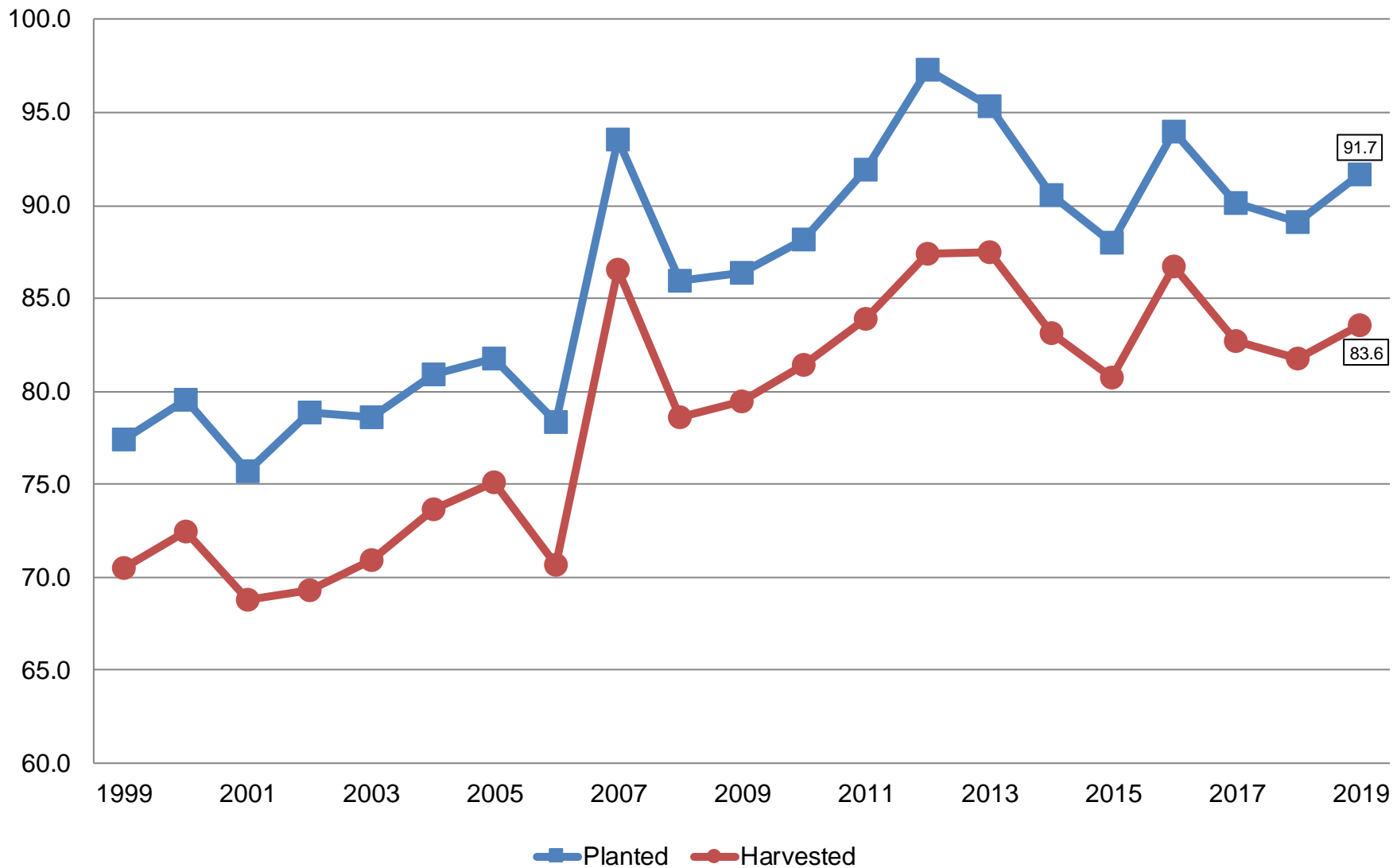
June 2019 Acreage

Crop	Unit	June 2019	% Change From Previous Forecast	% Change From Previous Season
Corn				
Planted	Mil Ac	91.7	-1.2	+2.9
Harvested	Mil Ac	83.6	NA	+2.3



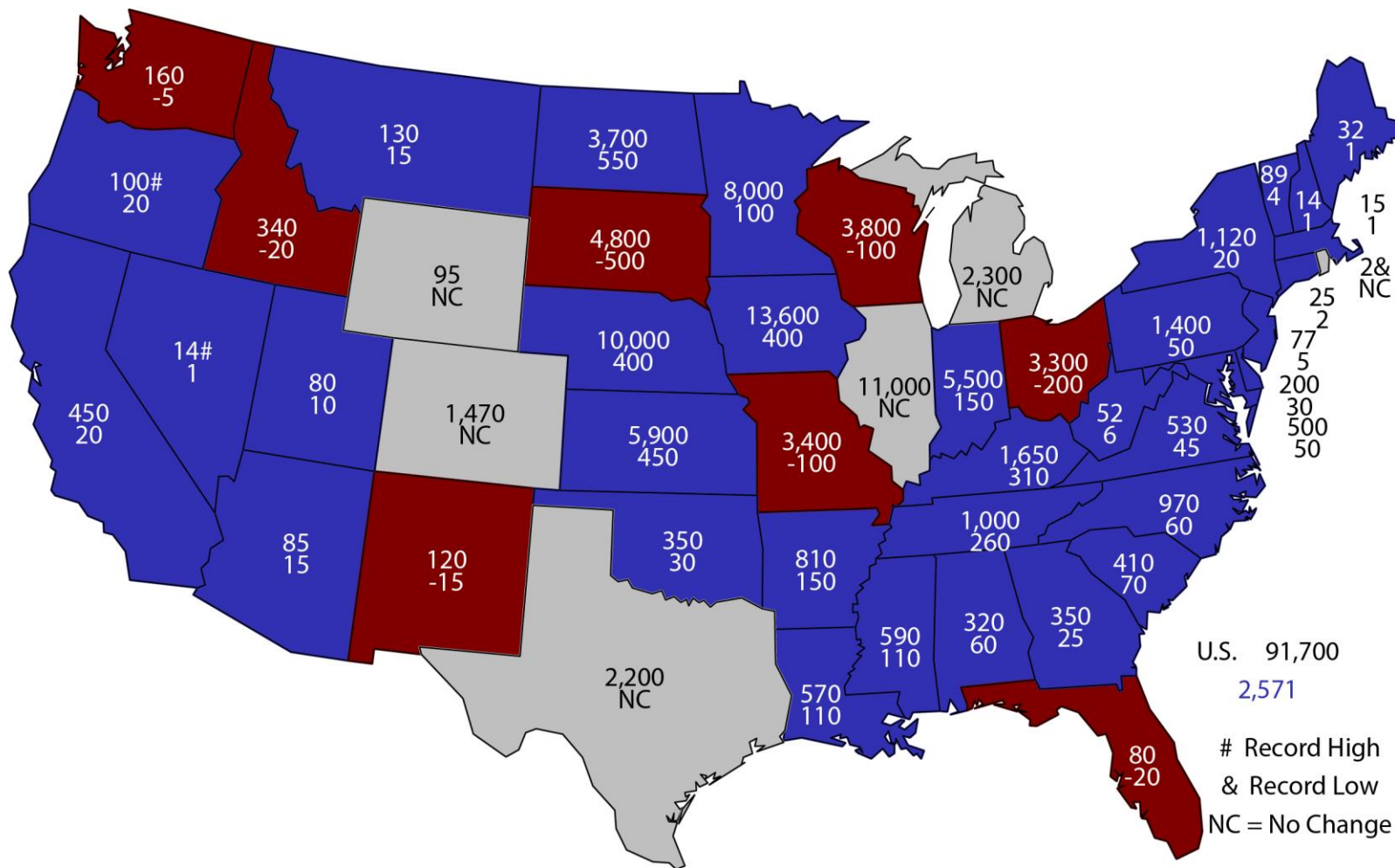
Corn Acres United States

Million Acres



2019 Corn Planted Area

(000) Acres and Change From Previous Year



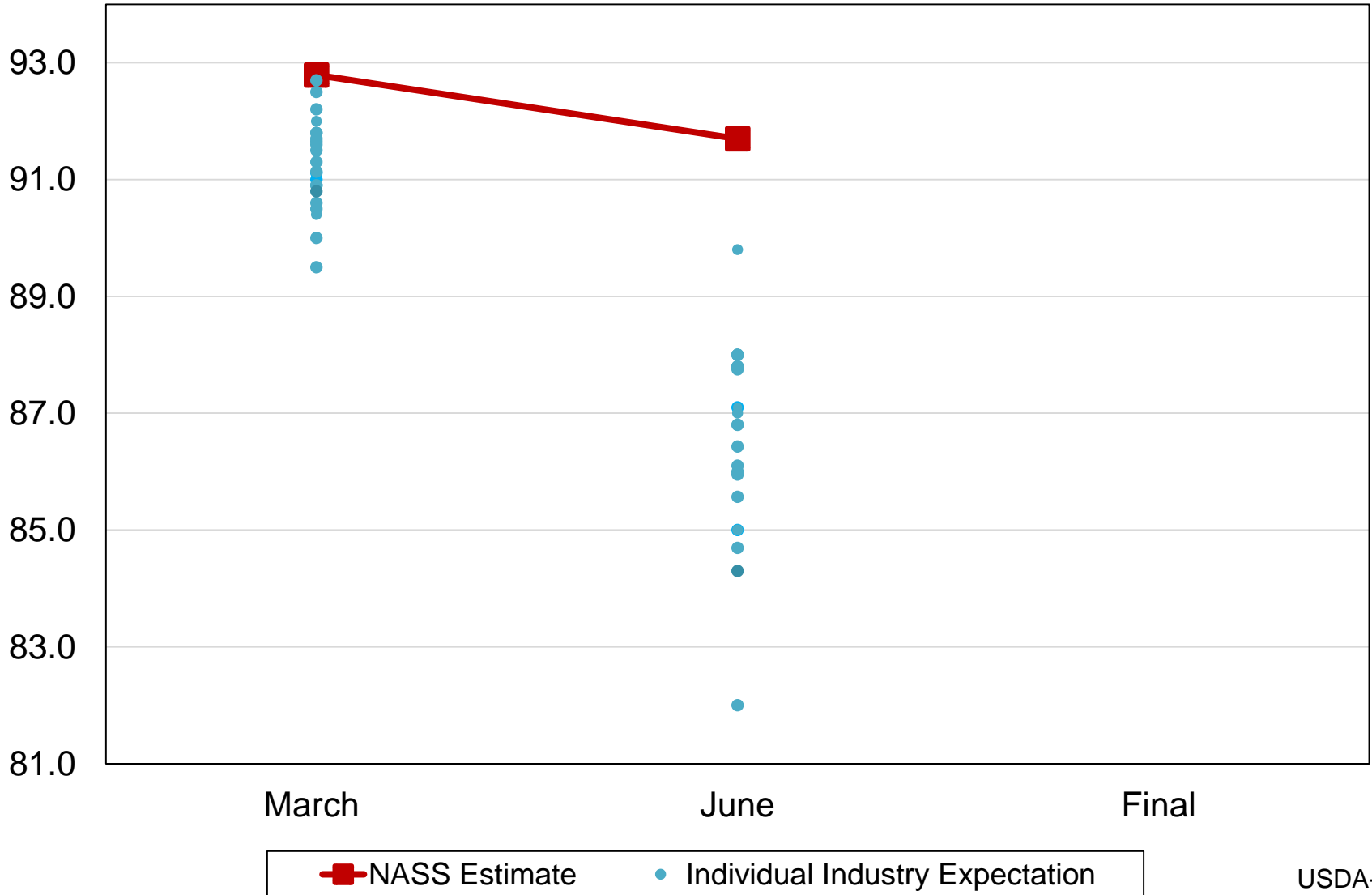
U.S. 91,700
2,571

Record High
& Record Low
NC = No Change



2019 United States Corn Acres Industry Expectations vs NASS

Million Acres





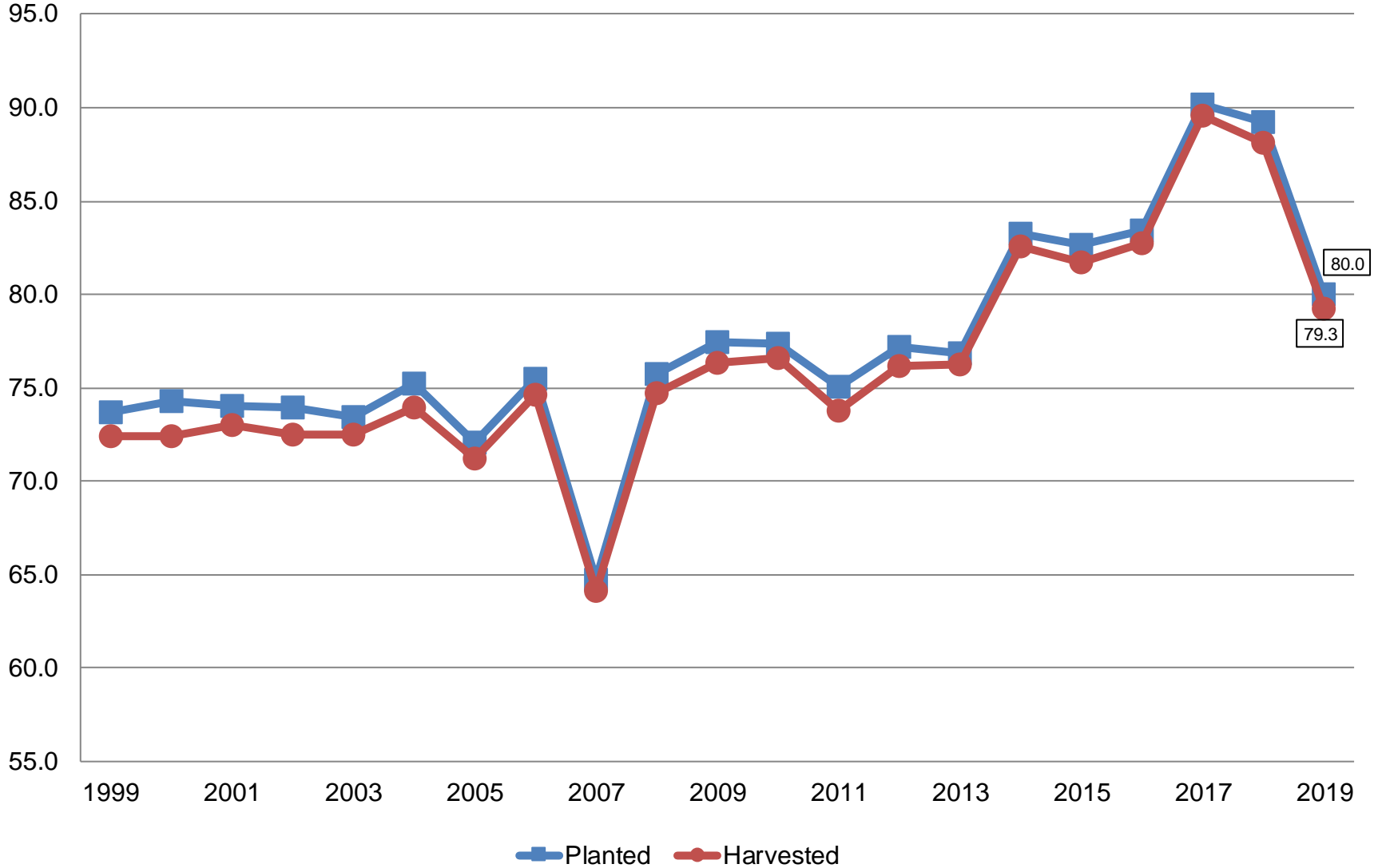
June 2019 Acreage

Crop	Unit	June 2019	% Change From Previous Forecast	% Change From Previous Season
Soybeans				
Planted	Mil Ac	80.0	-5.4	-10.3
Harvested	Mil Ac	79.3	NA	-10.0



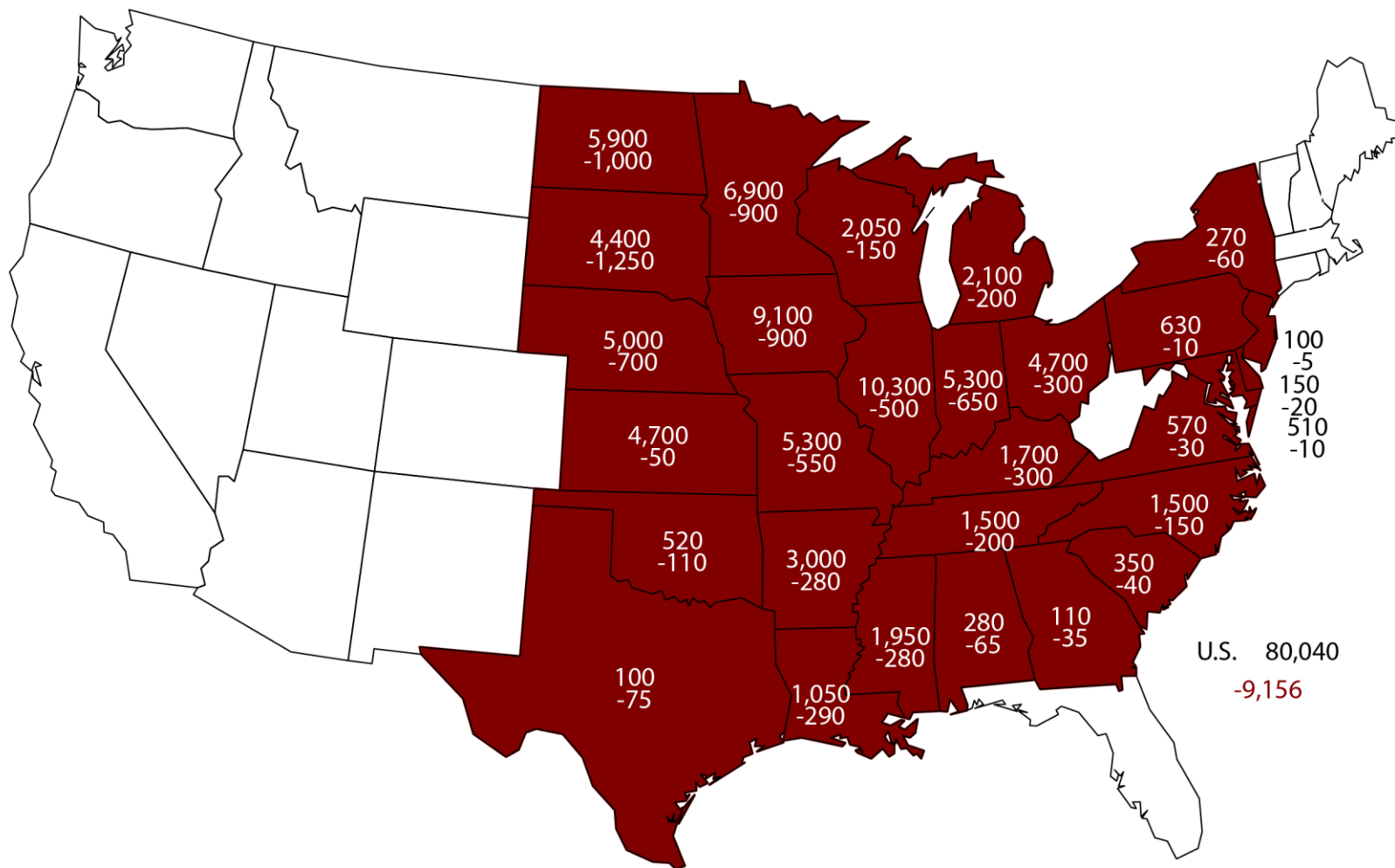
Soybean Acres United States

Million Acres



2019 Soybean Planted Area

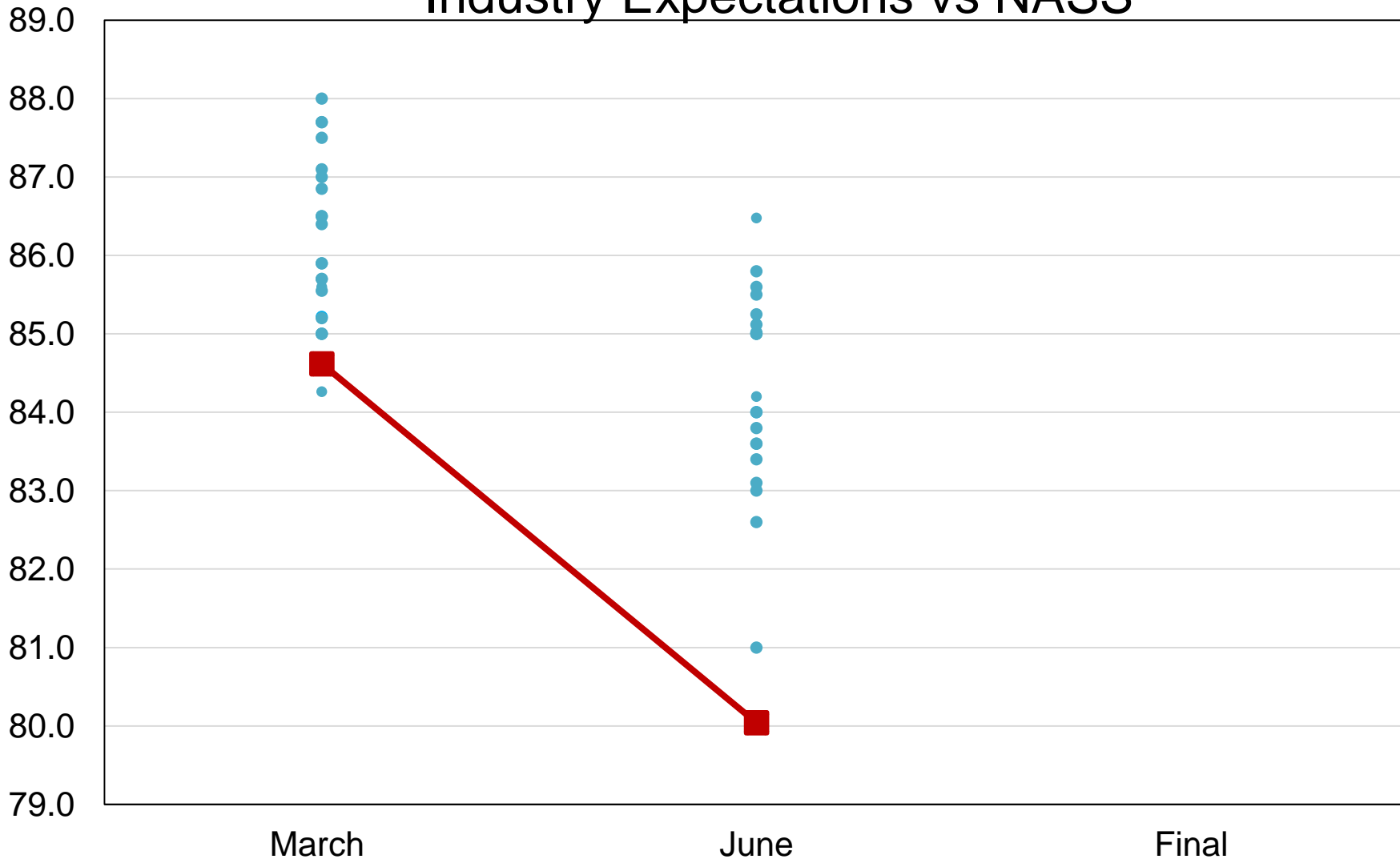
(000) Acres and Change From Previous Year





2019 United States Soybean Acres Industry Expectations vs NASS

Million Acres

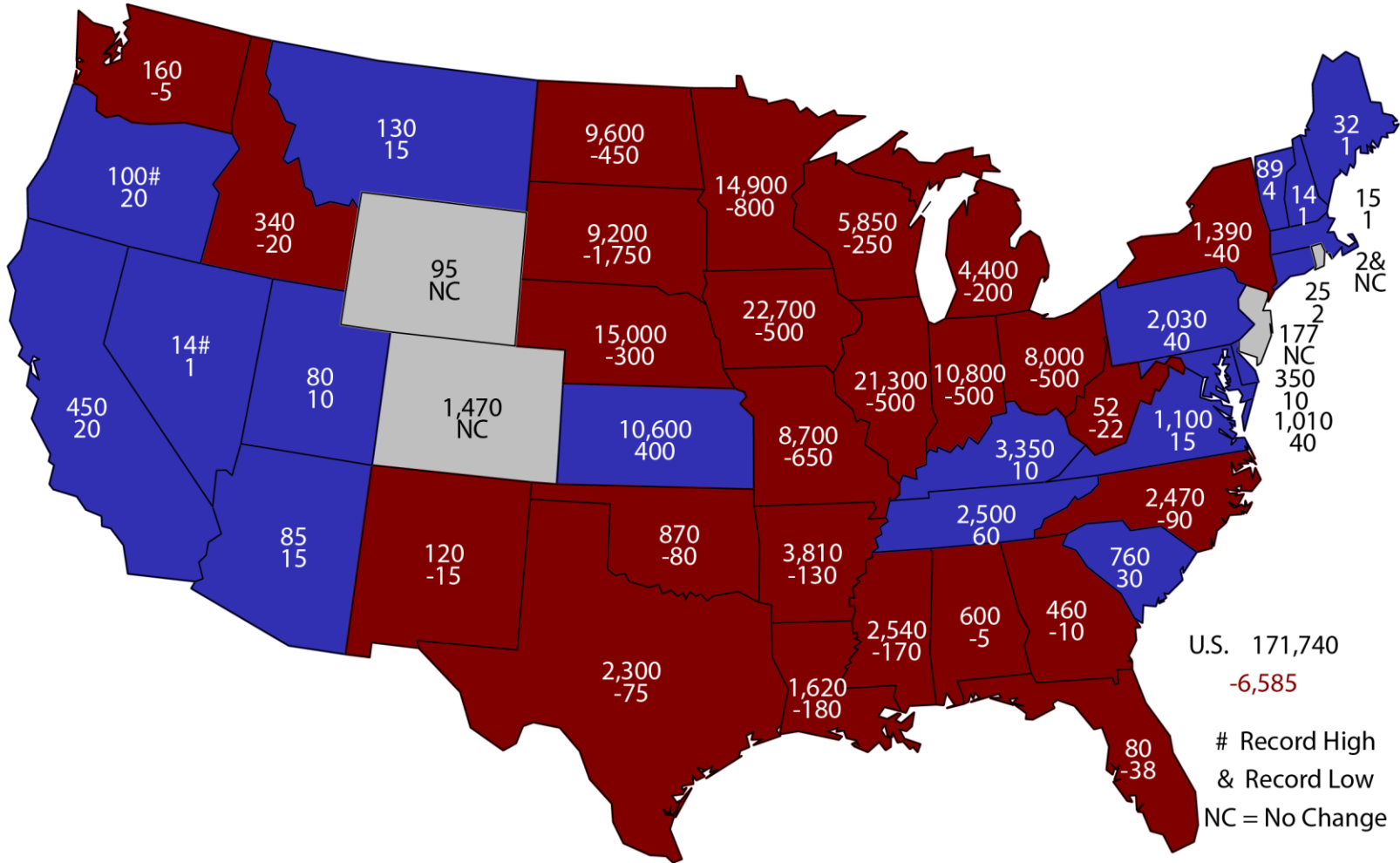


■ NASS Estimate ● Individual Industry Expectation



2019 Combined Corn & Soybean Planted Area

(000) Acres and Change From Previous Year



U.S. 171,740
-6,585

Record High
& Record Low
NC = No Change



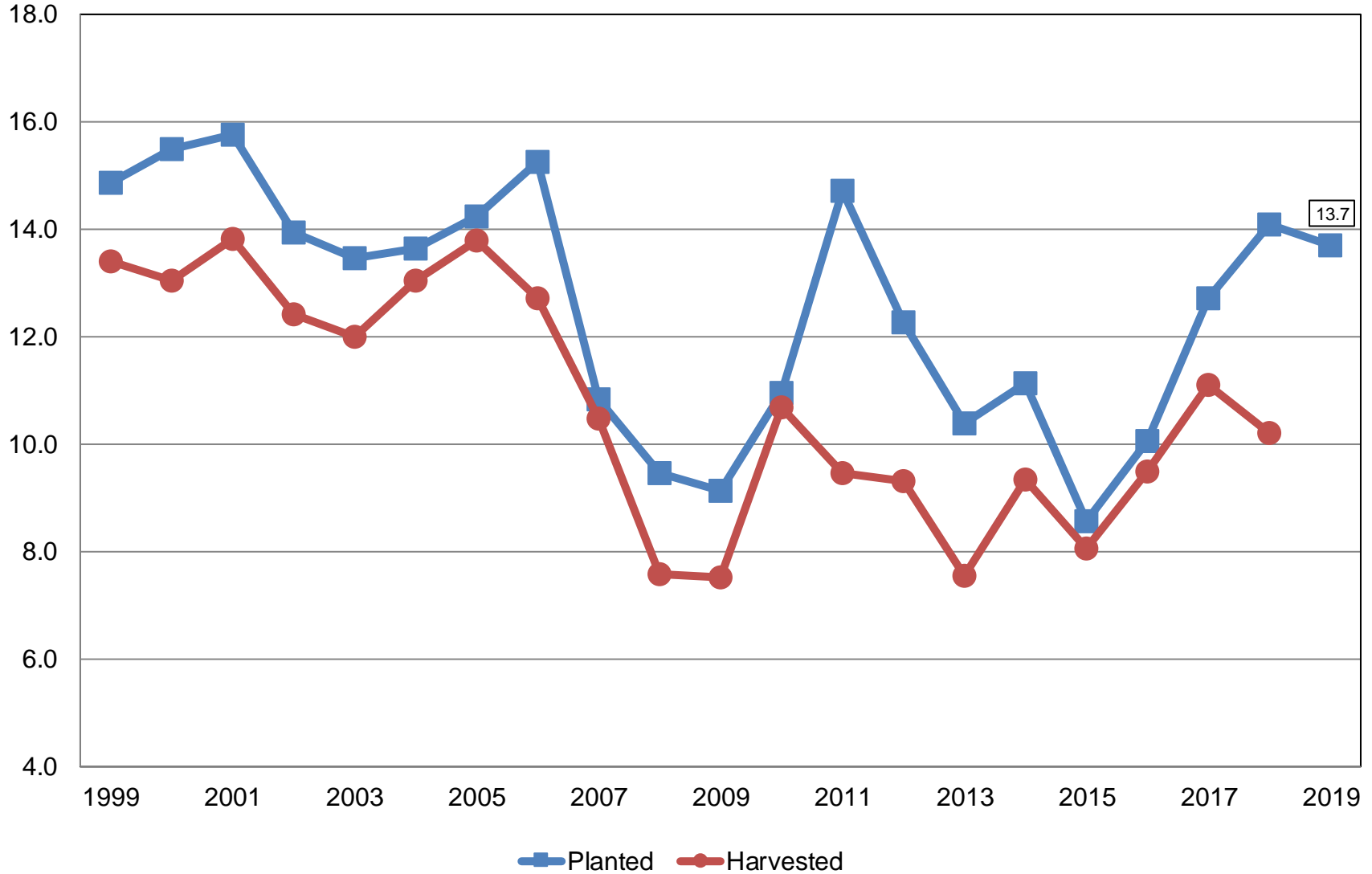
June 2019 Acreage

Crop	Unit	June 2019	% Change From Previous Estimate	% Change From Previous Season
All Cotton				
Planted	Mil Ac	13.7	-0.4	-2.7
Upland Cotton				
Planted	Mil Ac	13.4	-0.6	-2.9
Pima Cotton				
Planted	Thou Ac	275	+7.8	+9.9



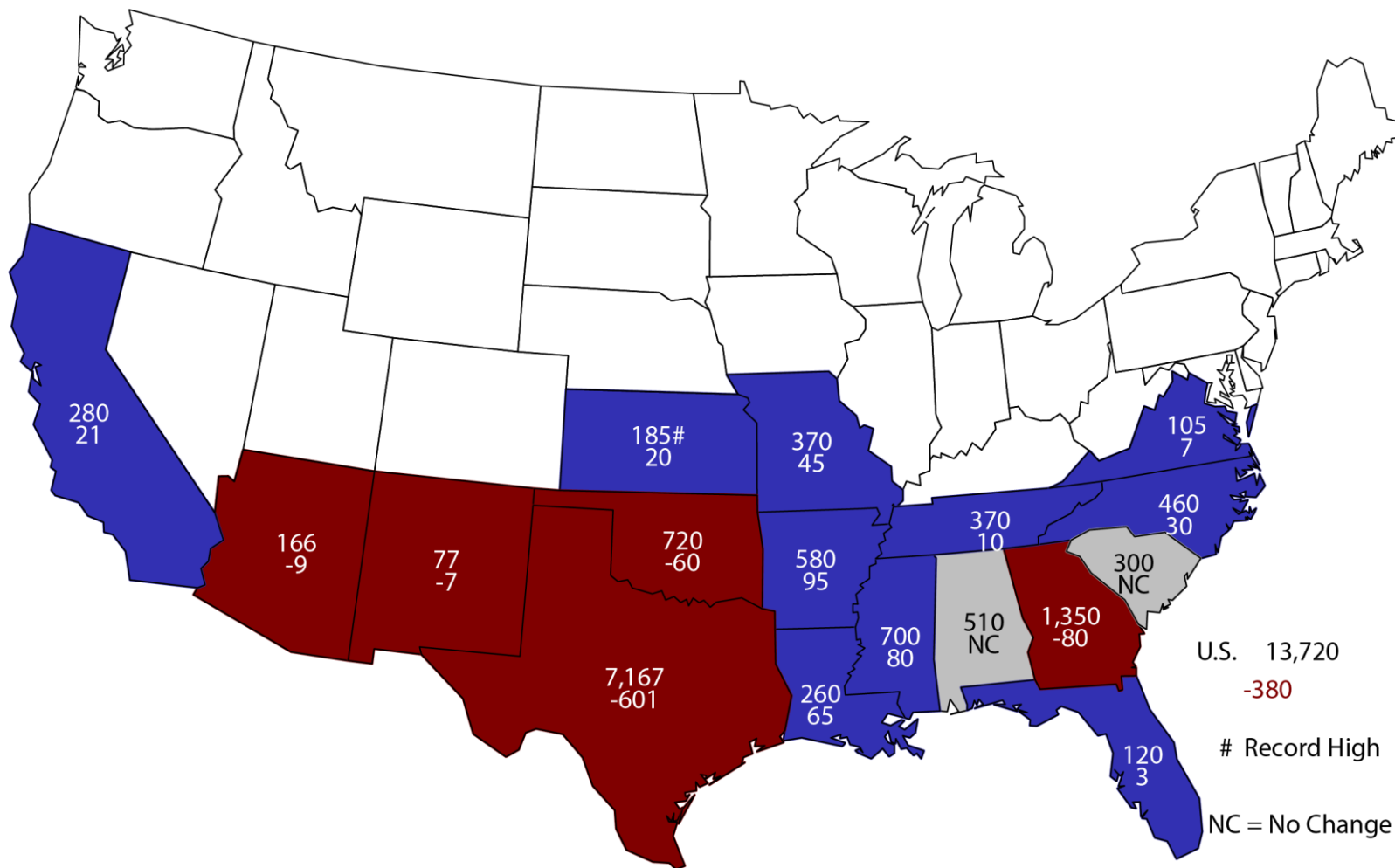
All Cotton Acres United States

Million Acres



2019 All Cotton Planted Area

Acres (000) and Change From Previous Year



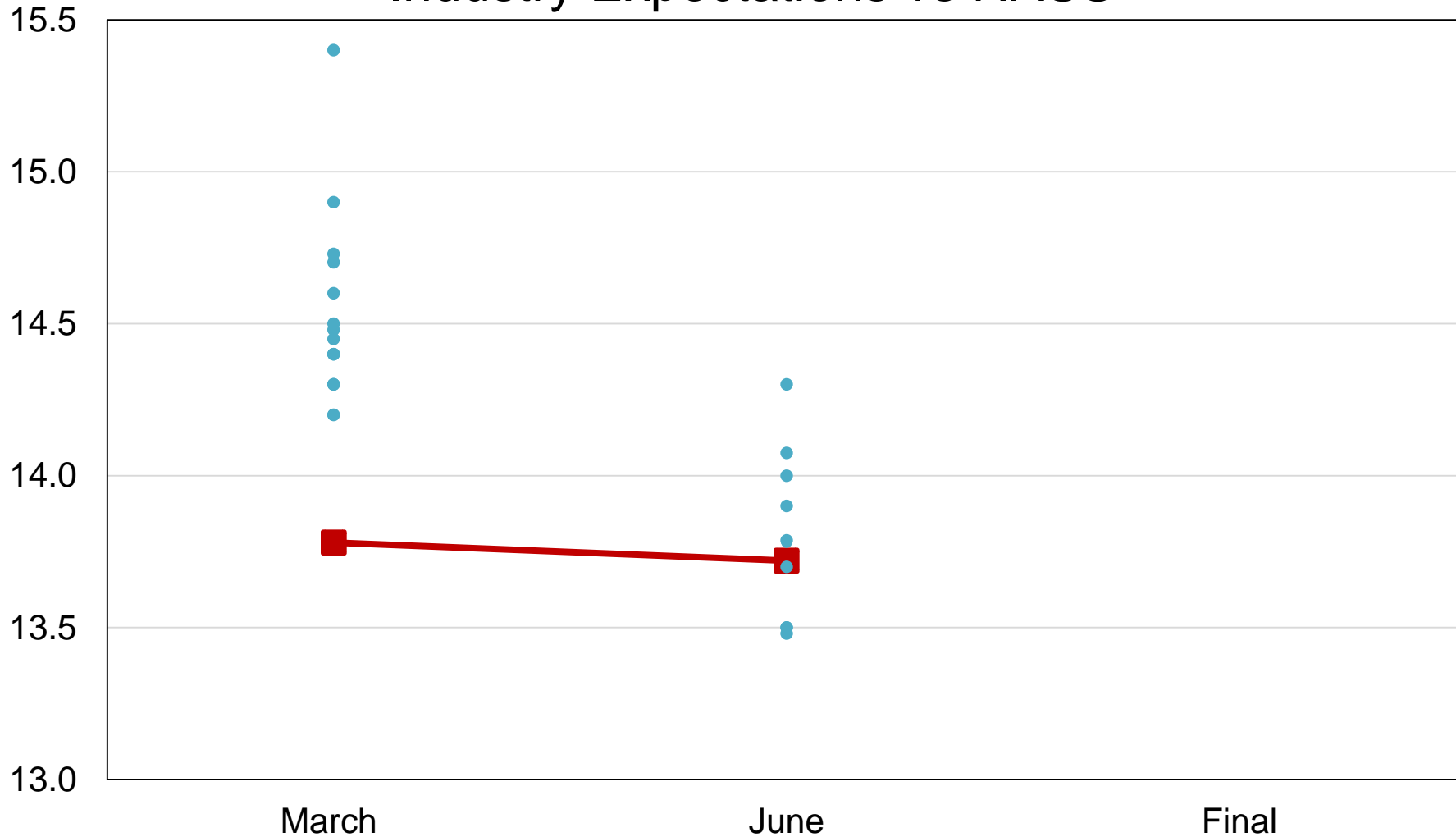
U.S. 13,720
-380

Record High

NC = No Change

2019 United States Cotton Acres Industry Expectations vs NASS

Million Acres



■ NASS Estimate • Individual Industry Expectation



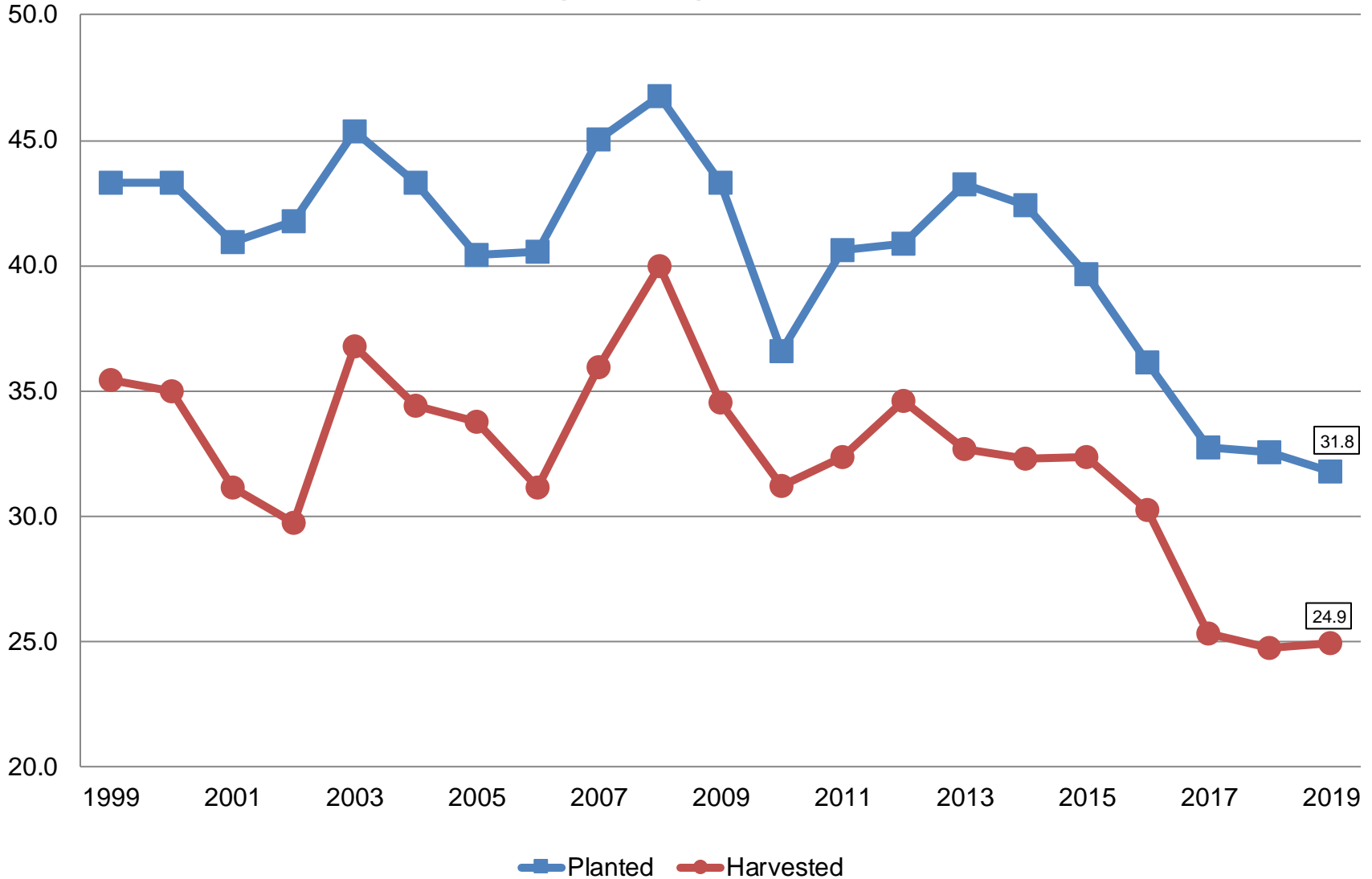
June 2019 Acreage

Crop	Unit	June 2019	% Change From Previous Estimate	% Change From Previous Season
Winter Wheat				
Planted	Mil Ac	31.8	+0.9	-2.3
Harvested	Mil Ac	24.9	-1.2	+0.7
Spring Wheat				
Planted	Mil Ac	12.4	-3.1	-5.8
Harvested	Mil Ac	12.1	NA	-6.0
Durum Wheat				
Planted	Mil Ac	1.40	-1.3	-32.2
Harvested	Mil Ac	1.36	NA	-31.1
All Wheat				
Planted	Mil Ac	45.6	-0.3	-4.6
Harvested	Mil Ac	38.4	NA	-3.0



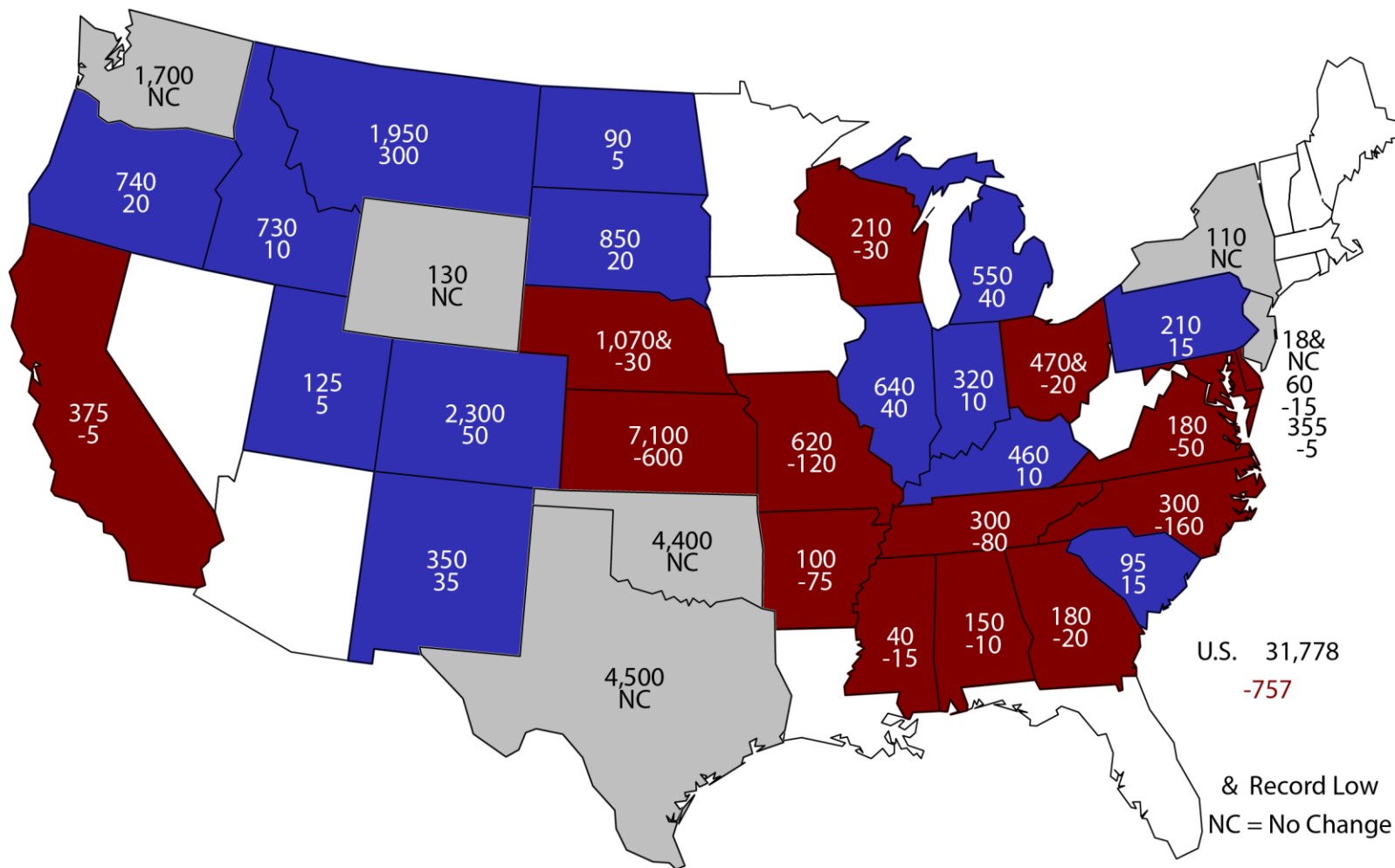
Winter Wheat Acres United States

Million Acres



2019 Winter Wheat Planted Area

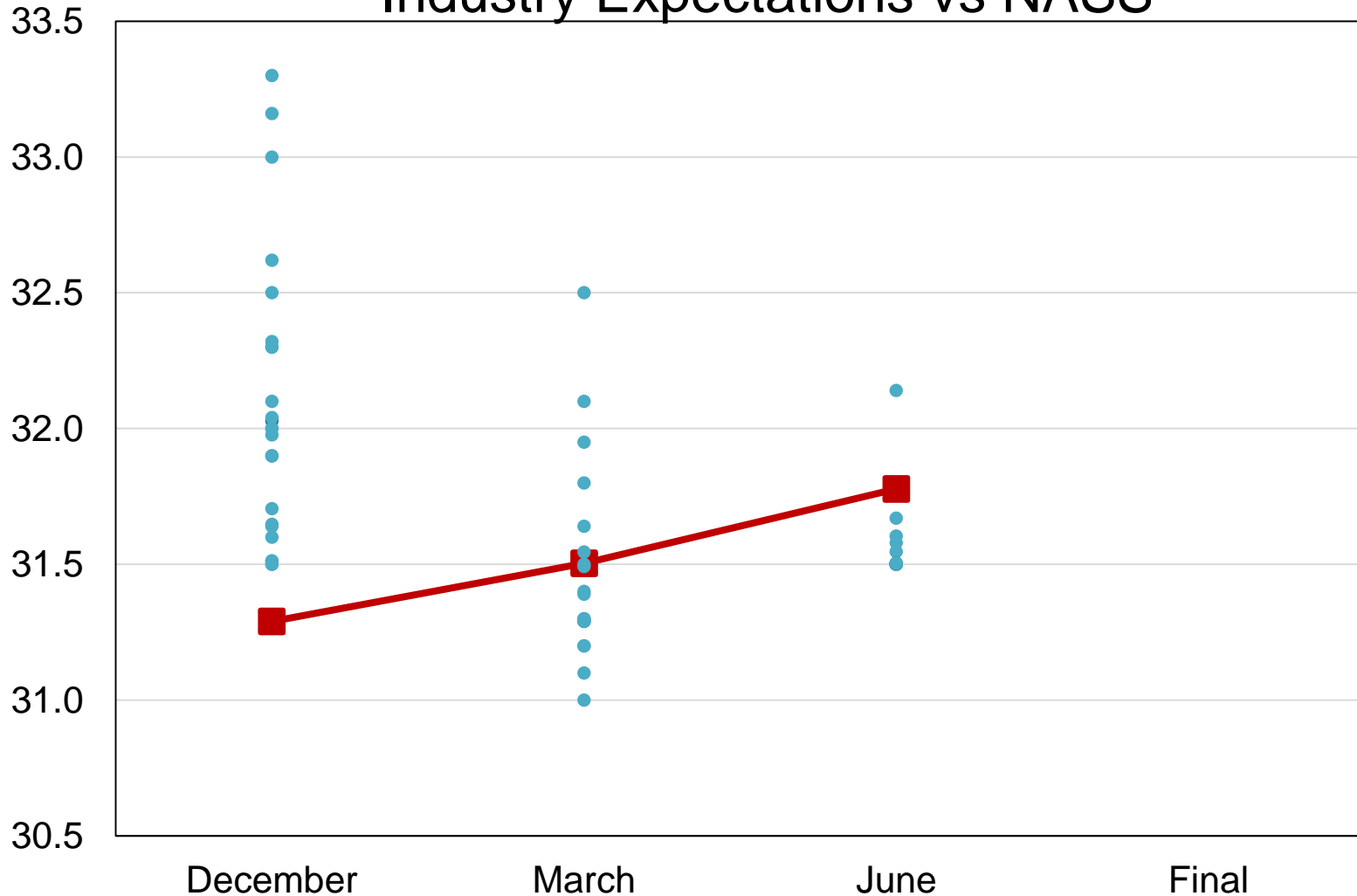
(000) Acres and Change From Previous Year



& Record Low
NC = No Change

2019 United States Winter Wheat Acres Industry Expectations vs NASS

Million Acres

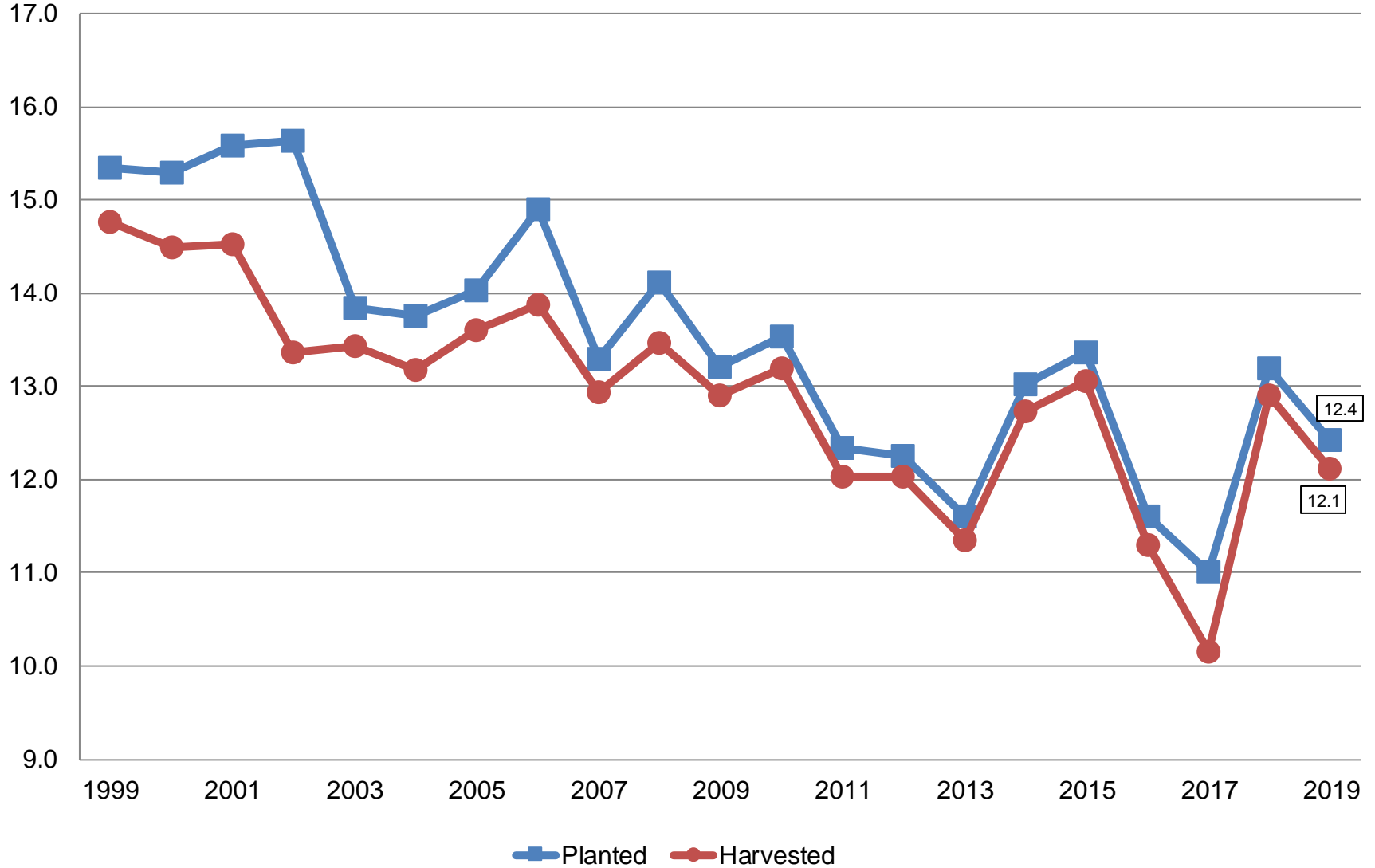


■ NASS Estimate
 ● Individual Industry Expectation



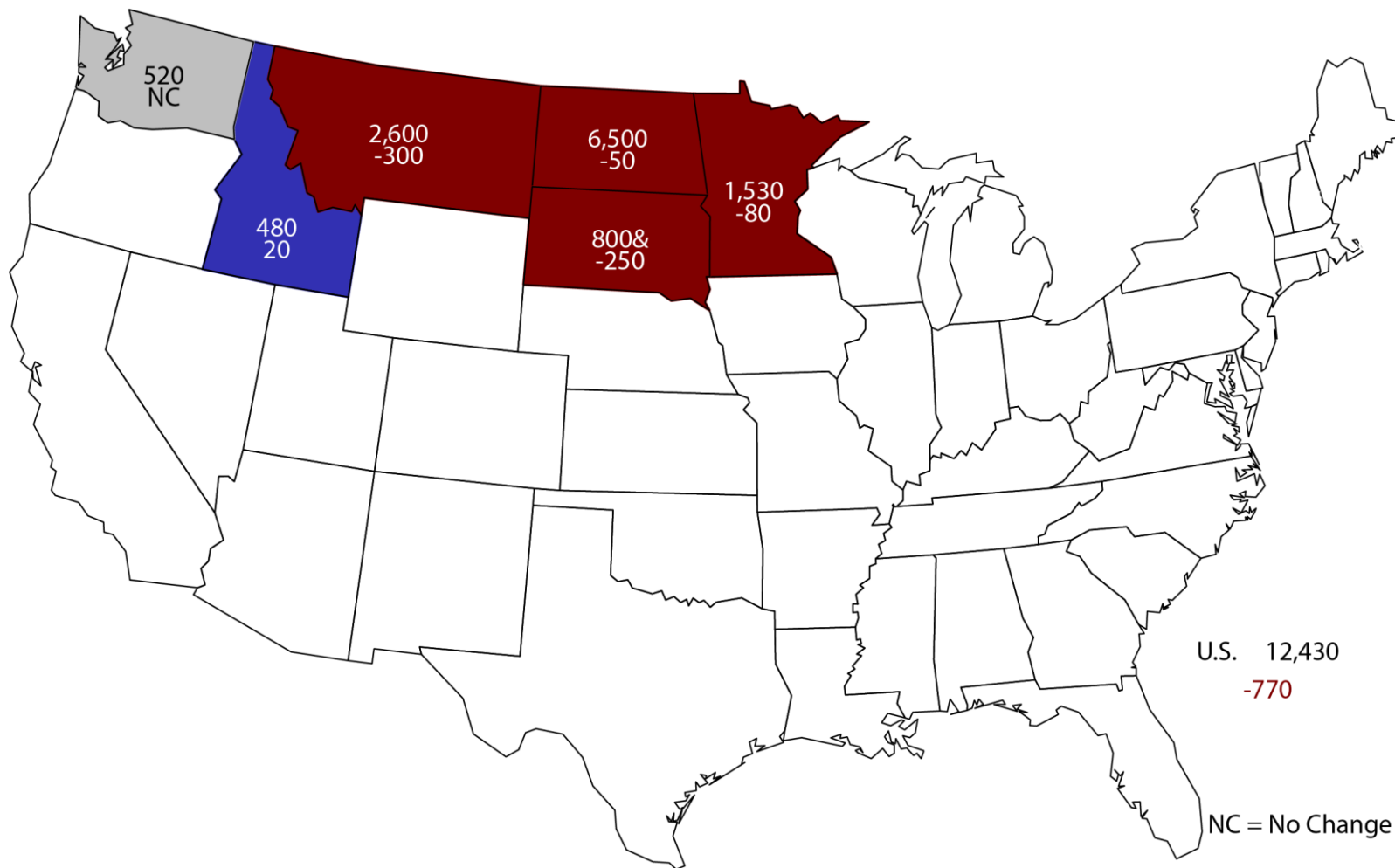
Other Spring Wheat Acres United States

Million Acres



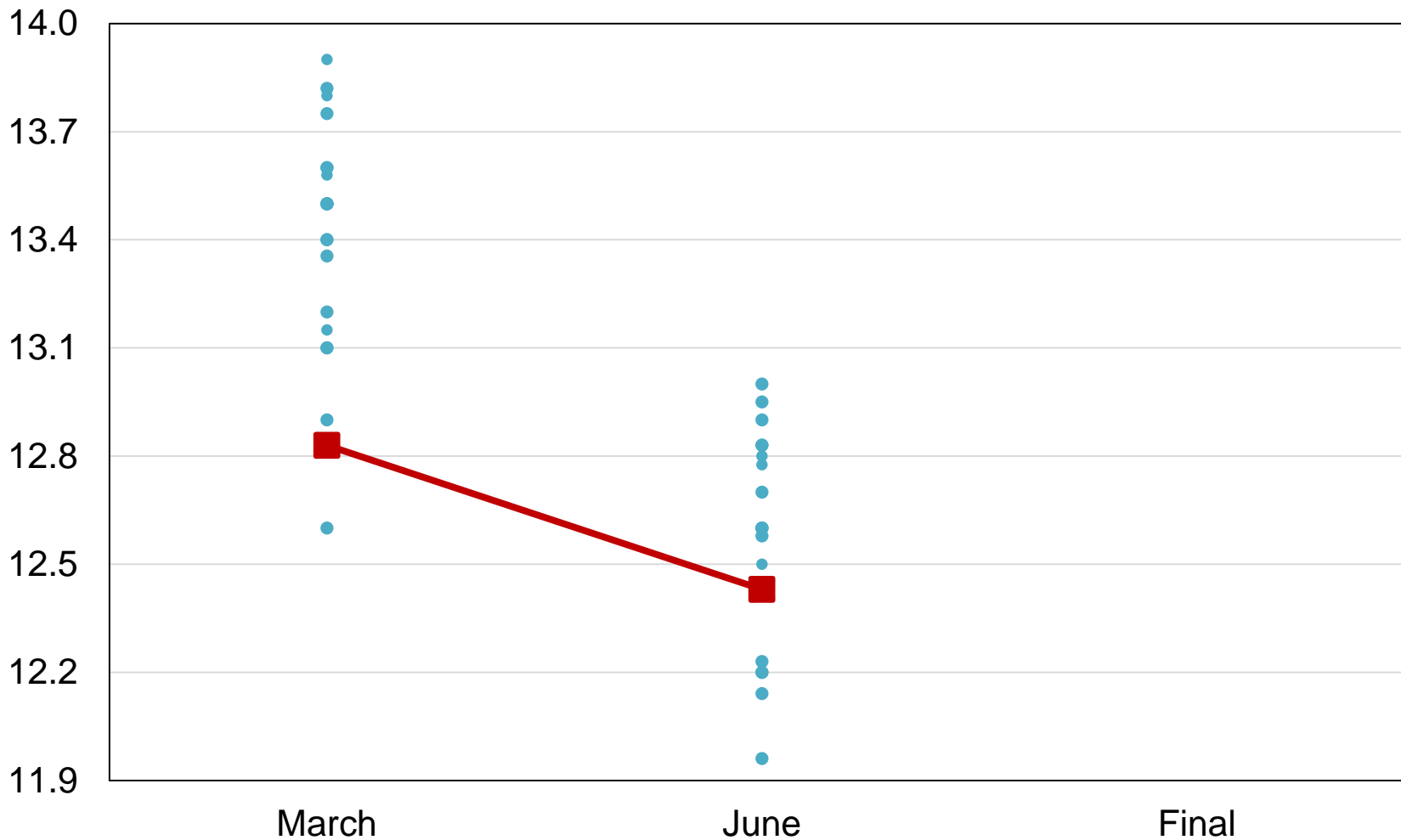
2019 Other Spring Wheat Planted Area

(000) Acres and Change From Previous Year



2019 United States Other Spring Wheat Acres Industry Expectations vs NASS

Million Acres



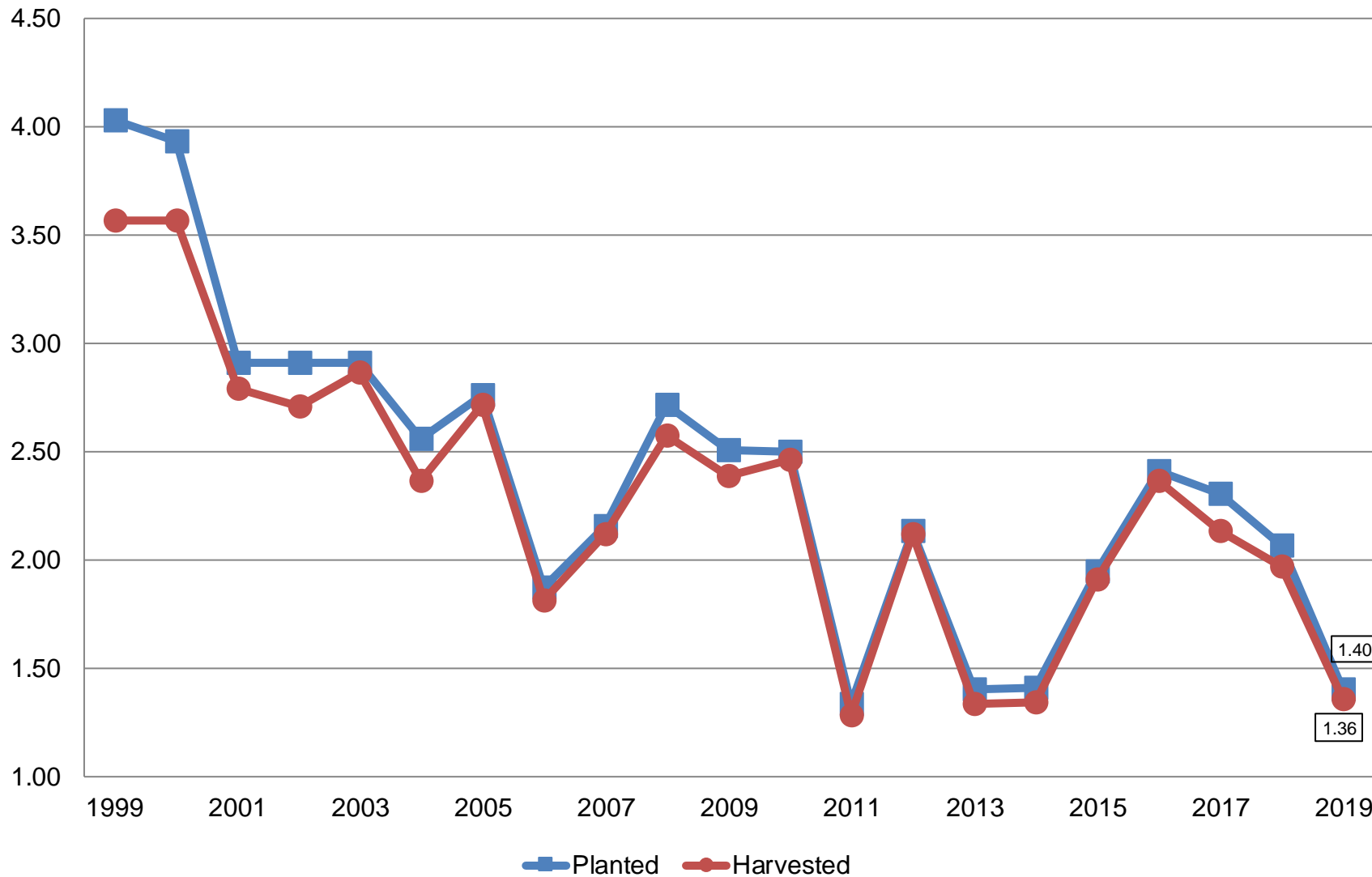
■ NASS Estimate
 ● Individual Industry Expectation



Durum Wheat Acres

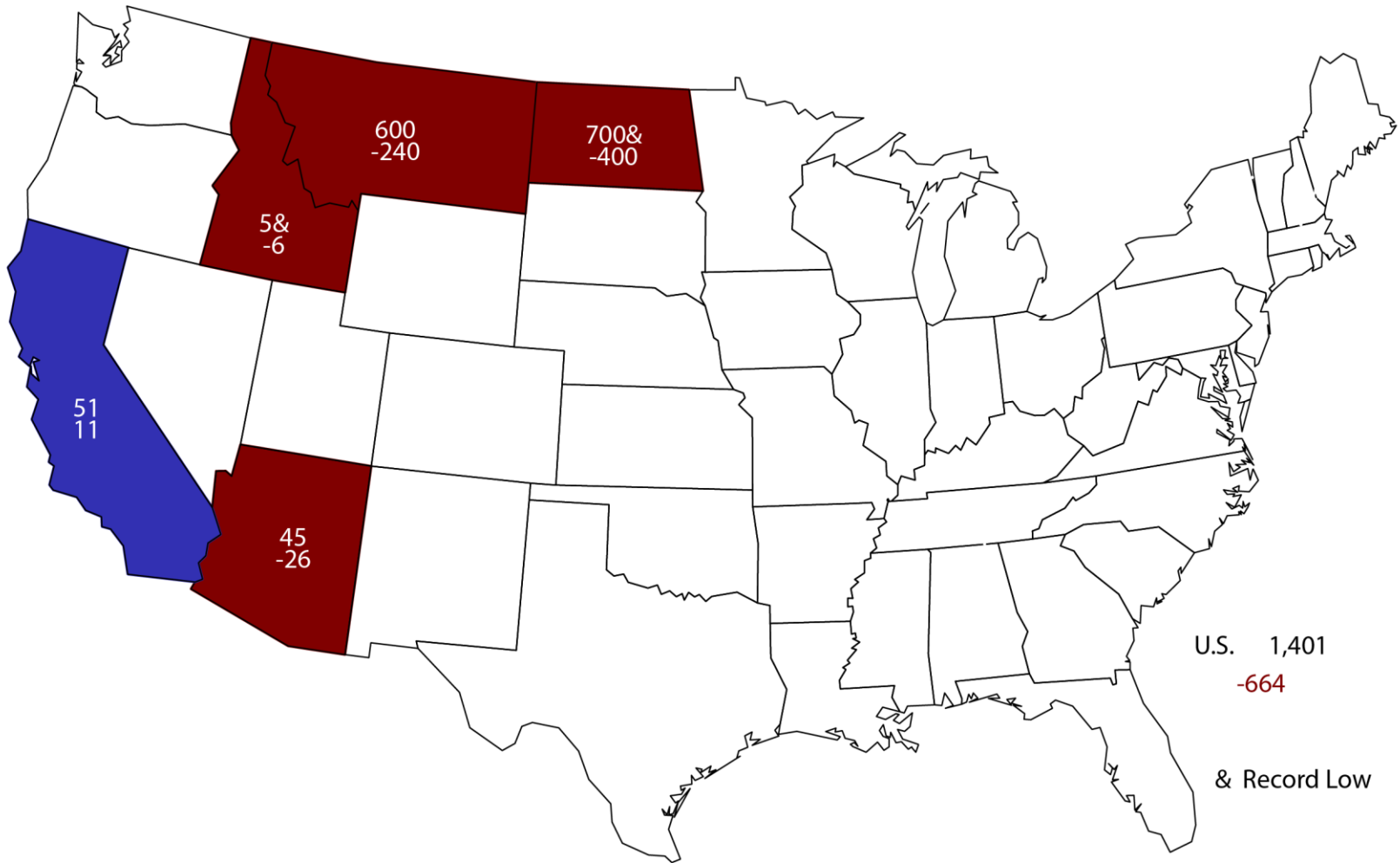
United States

Million Acres



2019 Durum Wheat Planted Area

(000) Acres and Change From Previous Year

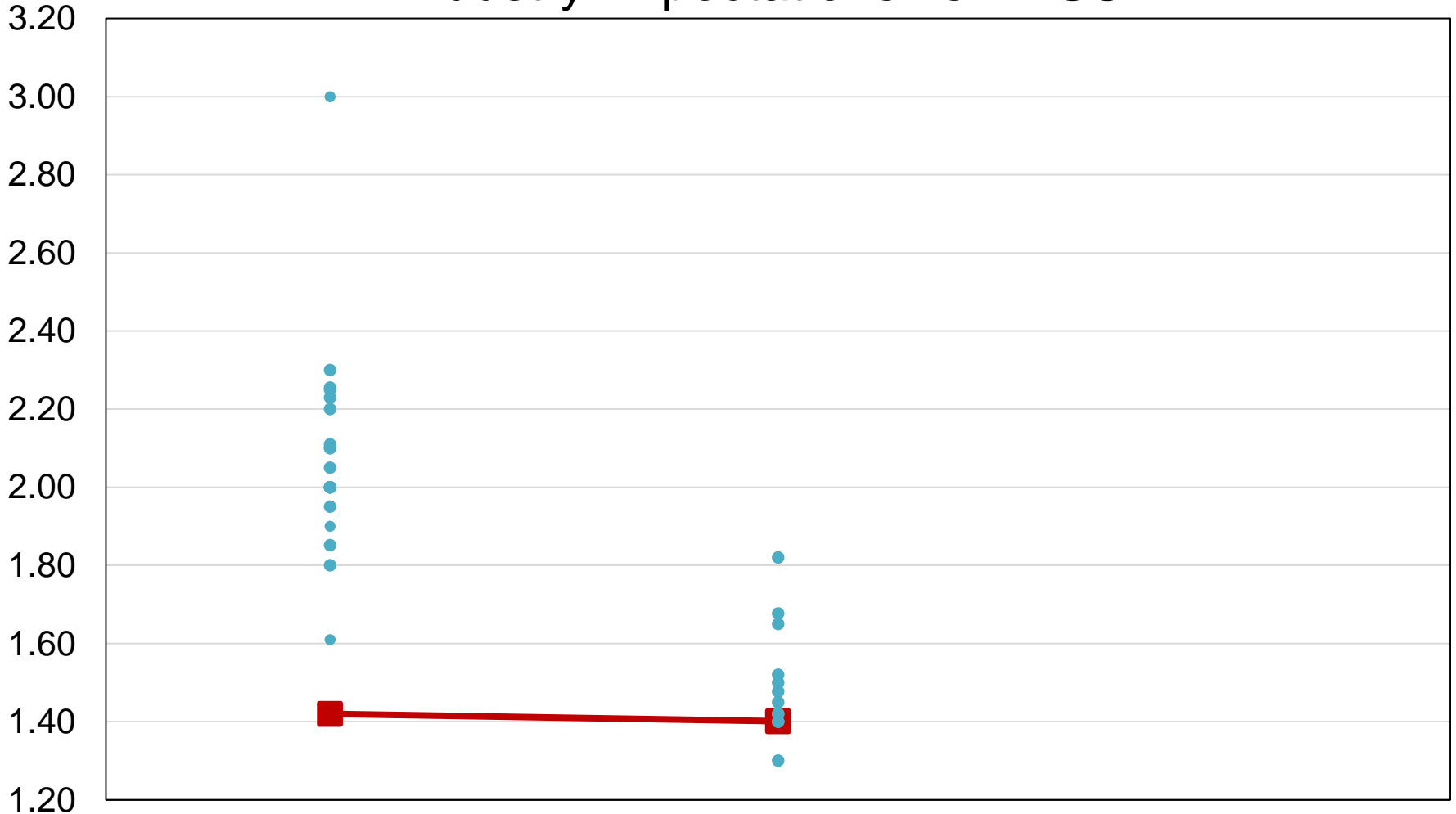


U.S. 1,401
-664
& Record Low



2019 United States Durum Wheat Acres Industry Expectations vs NASS

Million Acres



■ NASS Estimate ● Individual Industry Expectation



June 2019 Acreage

Crop	Unit	June 2019	% Change From Previous Estimate	% Change From Previous Season
Planted Area				
Sorghum	Mil Ac	5.13	-0.2	-9.9
Oats	Mil Ac	2.55	-0.2	-7.2
Barley	Mil Ac	2.86	+12.0	+12.3
Harvested Area				
All Hay	Mil Ac	52.8	-0.6	-0.1
Alfalfa	Mil Ac	16.8	NA	+1.3
Other Hay	Mil Ac	35.9	NA	-0.8



June 2019 Acreage

Crop	Unit	June 2019	% Change From Previous Estimate	% Change From Previous Season
Planted Area				
Rice	Mil Ac	2.76	-4.0	-6.4
Peanuts	Mil Ac	1.36	-5.9	-4.3
Sugarbeets	Mil Ac	1.13	+0.6	+1.2
Dry Beans	Mil Ac	1.31	+5.7	-37.0
Potatoes	Thou Ac	968	NA	+0.1
Harvested Area				
Sugarcane	Thou Ac	916	NA	+1.8
Tobacco	Thou Ac	236	-3.4	-19.1
Hops	Thou Ac	57.3	NA	+4.2



June 2019 Acreage

Crop	Unit	June 2019	% Change From Previous Estimate	% Change From Previous Season
Planted				
Dry Peas	Mil Ac	1.03	+16.6	+19.9
Lentils	Thou Ac	535	-3.6	-31.4
Chickpeas	Thou Ac	560	+7.8	-34.9



June 2019 Acreage

Crop	Unit	June 2019	% Change From Previous Estimate	% Change From Previous Season
Planted				
Sunflower	Mil Ac	1.38	+2.3	+6.1
Canola	Mil Ac	2.02	+6.0	+1.4
Flaxseed	Thou Ac	355	NA	+70.7
Safflower	Thou Ac	153	NA	-8.7
Mustard Seed	Thou Ac	110	NA	+7.3
Rye	Mil Ac	1.88	NA	-6.8
Proso Millet	Thou Ac	433	NA	-2.3
Rapeseed	Thou Ac	14.8	NA	+159.6



Biotech Varieties % of All Planted Acres

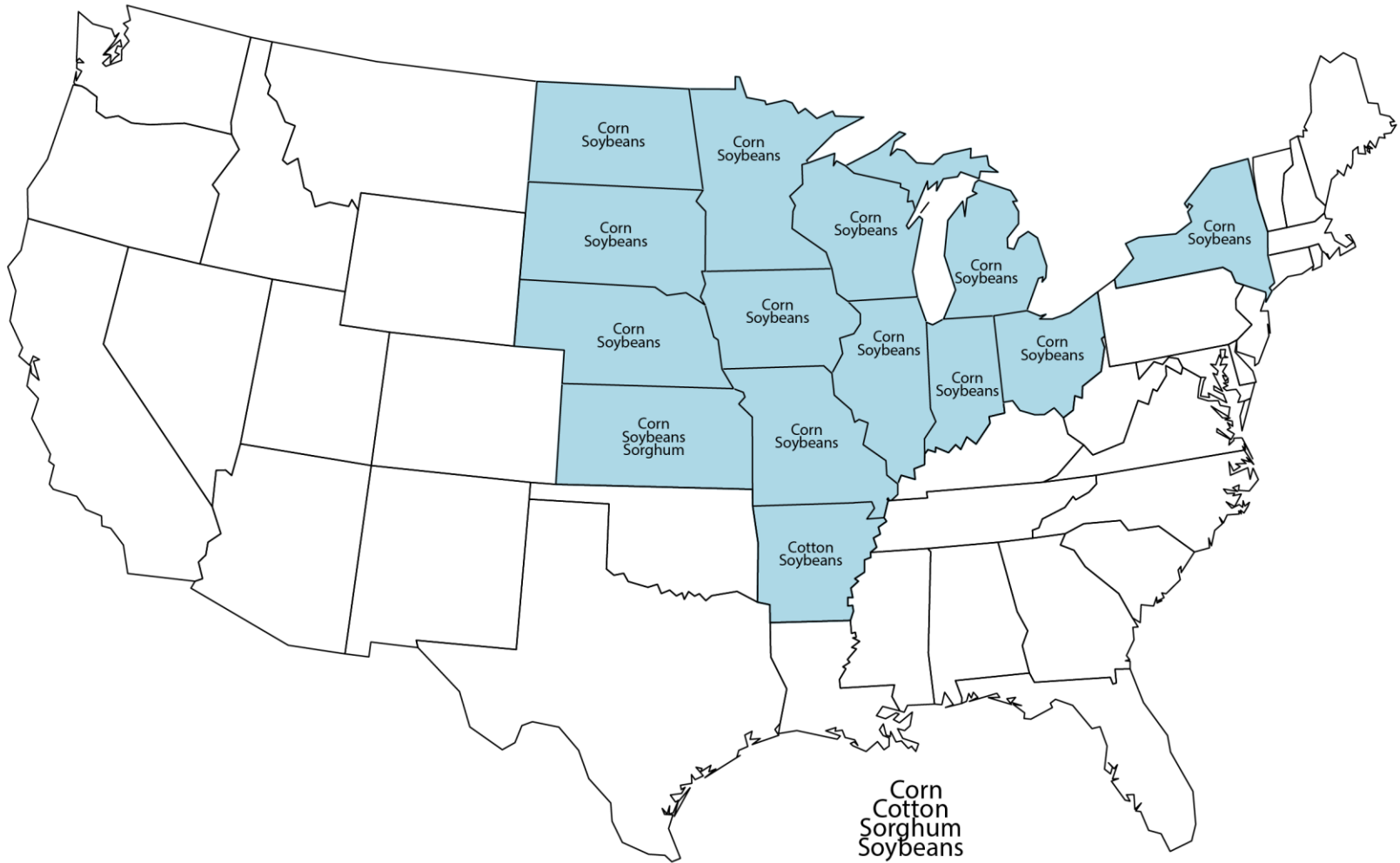
Crop	Herbicide Resistant Only		Insect Resistant (Bt) Only	
	2018	2019	2018	2019
Corn	10	9	2	3
Soybeans	94	94	-	-
Upland Cotton	9	6	3	3
Crop	Stacked Gene		All Biotech Varieties	
	2018	2019	2018	2019
Corn	80	80	92	92
Soybeans	-	-	94	94
Upland Cotton	82	89	94	98



Percent of Acres Remaining To Be Planted

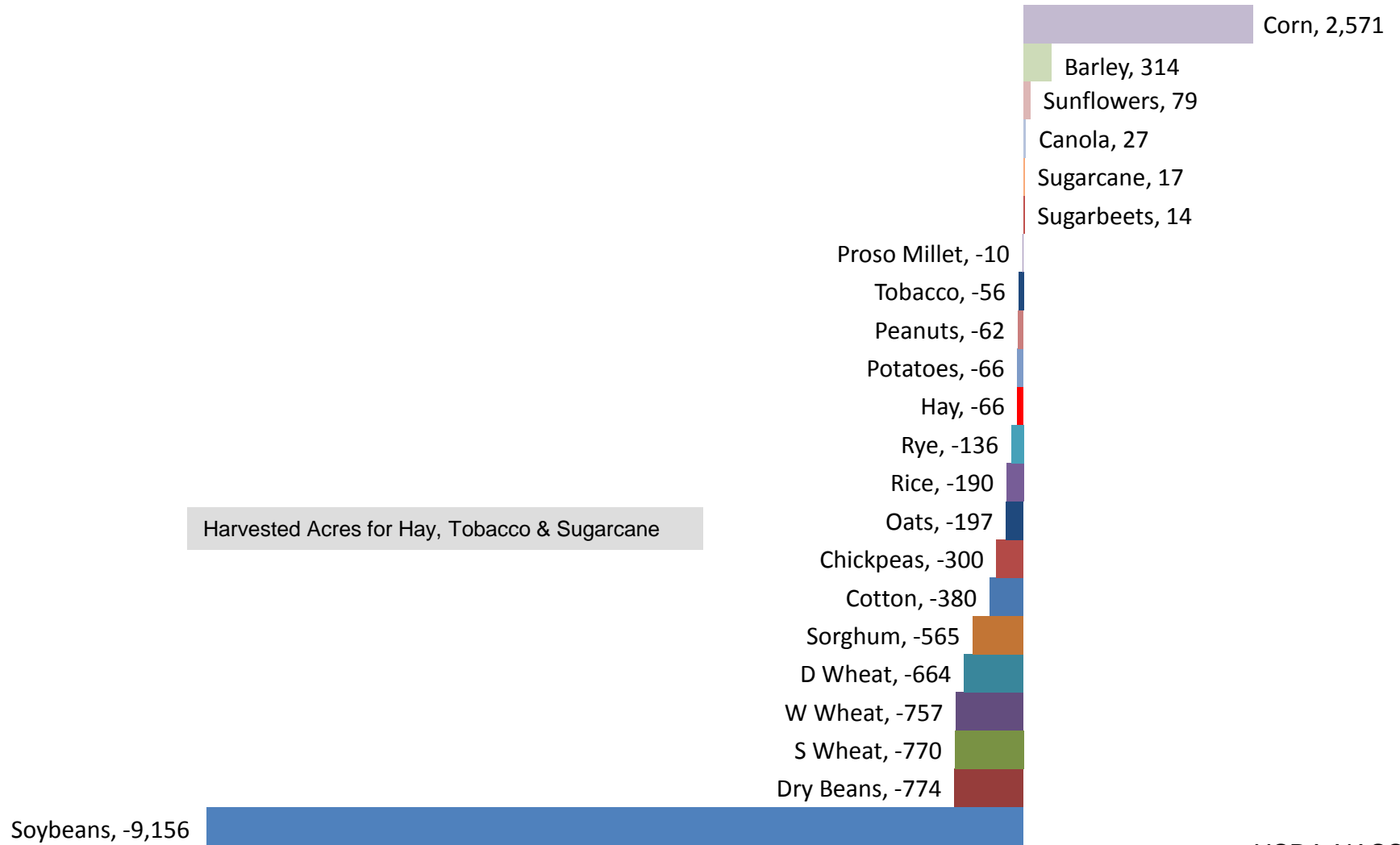
Crop	2015	2016	2017	2018	2019
Corn	1.7	1.4	2.0	1.6	16.7
Soybeans	15.5	12.4	10.9	8.5	41.2
Cotton	21.5	17.3	16.2	15.3	16.1
Other Spring Wheat	0.6	1.1	0.7	0.7	2.5
Durum Wheat	3.6	6.6	2.6	3.0	4.6
Sorghum	17.6	14.4	12.3	18.4	21.6

June 2019 Reinterview States





Principal Crop Planted Acres (000) Changes United States: 2019 Compared With 2018





June Grain Stocks

Crop	Unit	June 2019	% Change From Previous Estimate	% Change From Previous Year
Stocks				
Corn	Bil Bu	5.20	NA	-1.9
Soybeans	Bil Bu	1.79	NA	+46.8
Sorghum	Mil Bu	115	NA	+75.5
Canola	Mil Lbs	324	NA	+67.4
Rice	Mil Cwt	65.8	NA	+46.1



June Grain Stocks

Crop	Unit	June 2019	% Change From Previous Estimate	% Change From Previous Year
Stocks				
All Wheat	Bil Bu	1.07	NA	-2.4
Barley	Mil Bu	86.6	NA	-8.4
Oats	Mil Bu	36.9	NA	-10.0
Rye	Thou Bu	398	NA	-32.9



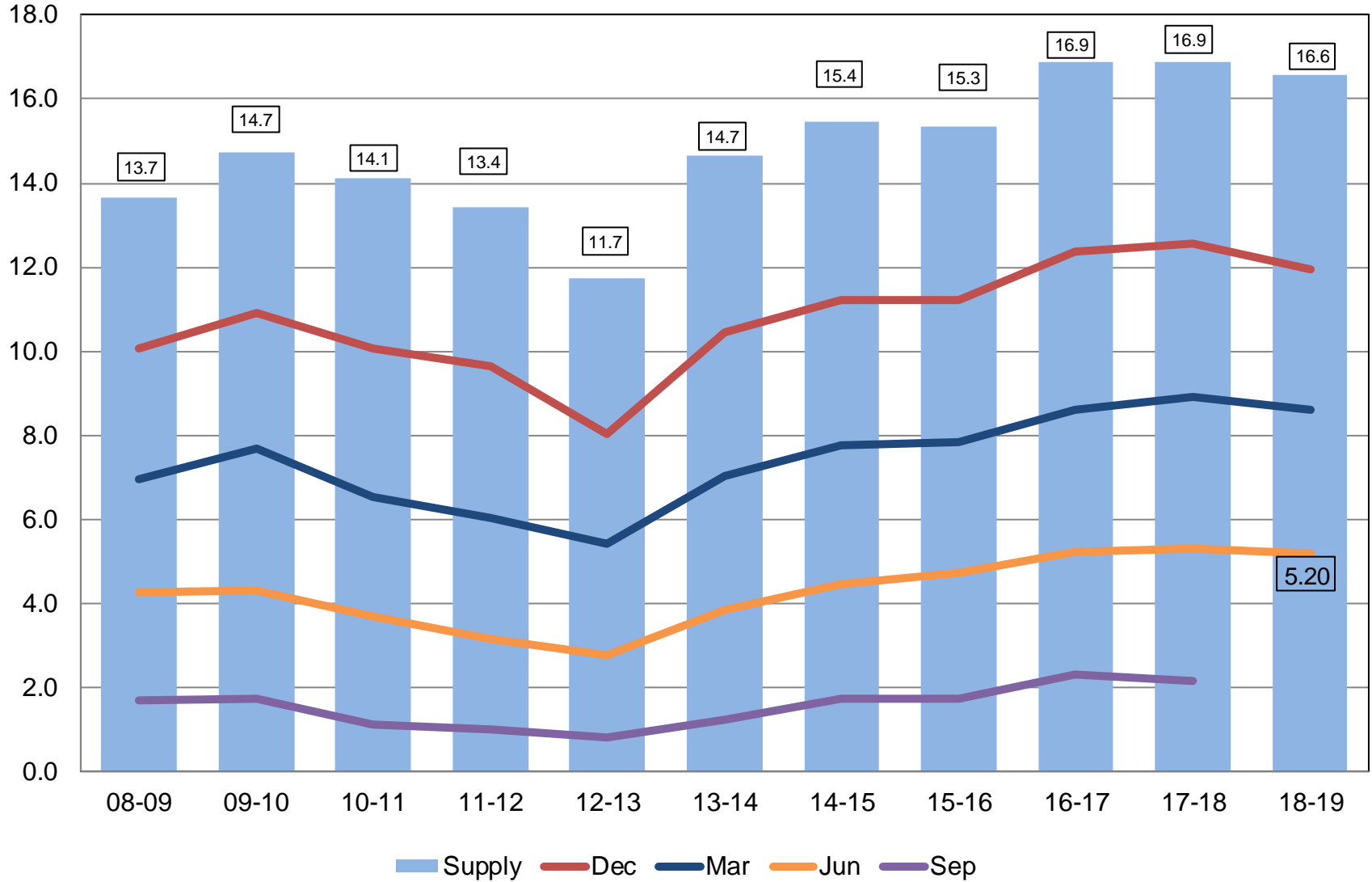
June Grain Stocks

Crop	Unit	June 2019	% Change From Previous Estimate	% Change From Previous Season
Stocks				
Dry Peas	Mil Cwt	4.50	NA	+2.2
Lentils	Mil Cwt	3.18	NA	+80.9
A. Winter Peas	Thou Cwt	177	NA	-34.4
Chickpeas	Mil Cwt	3.47	NA	+294.0
Small	Thou Cwt	955	NA	+256.3
Large	Mil Cwt	2.51	NA	+310.5



Corn Stocks United States

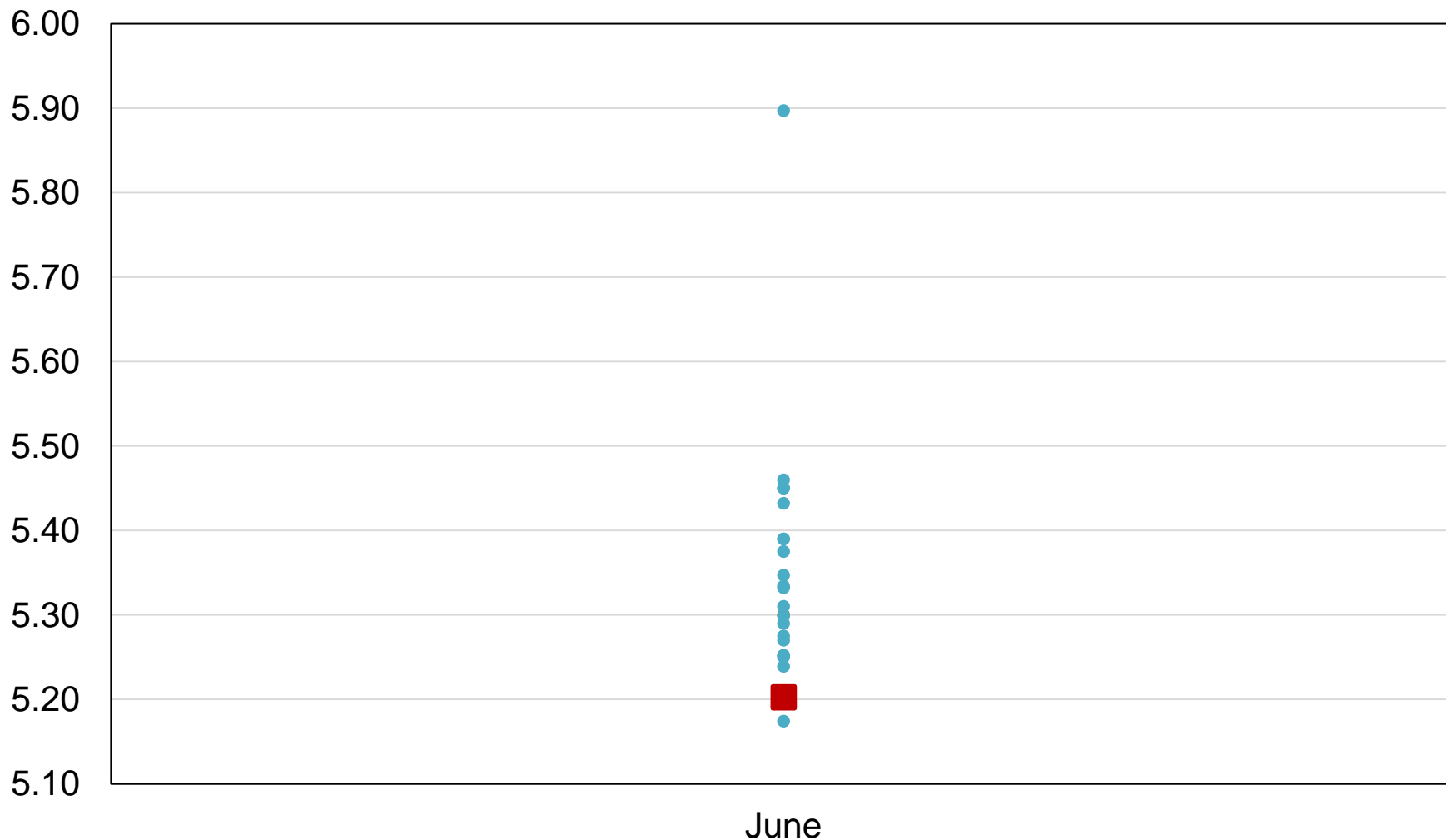
Billion Bushels





2019 United States Corn Stocks Industry Expectations vs NASS

Billion Bushels

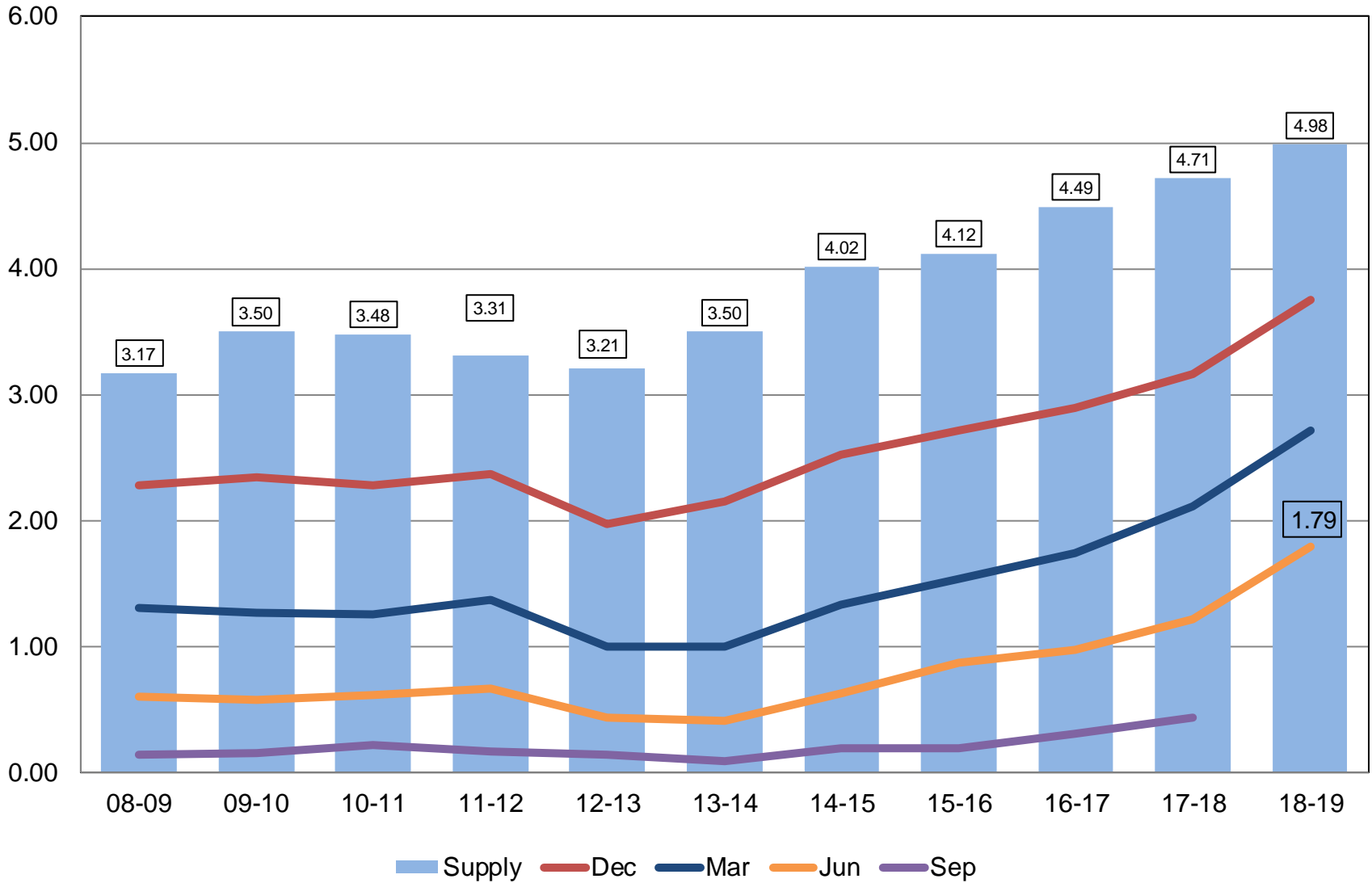


■ NASS Forecast ● Individual Industry Expectation



Soybean Stocks United States

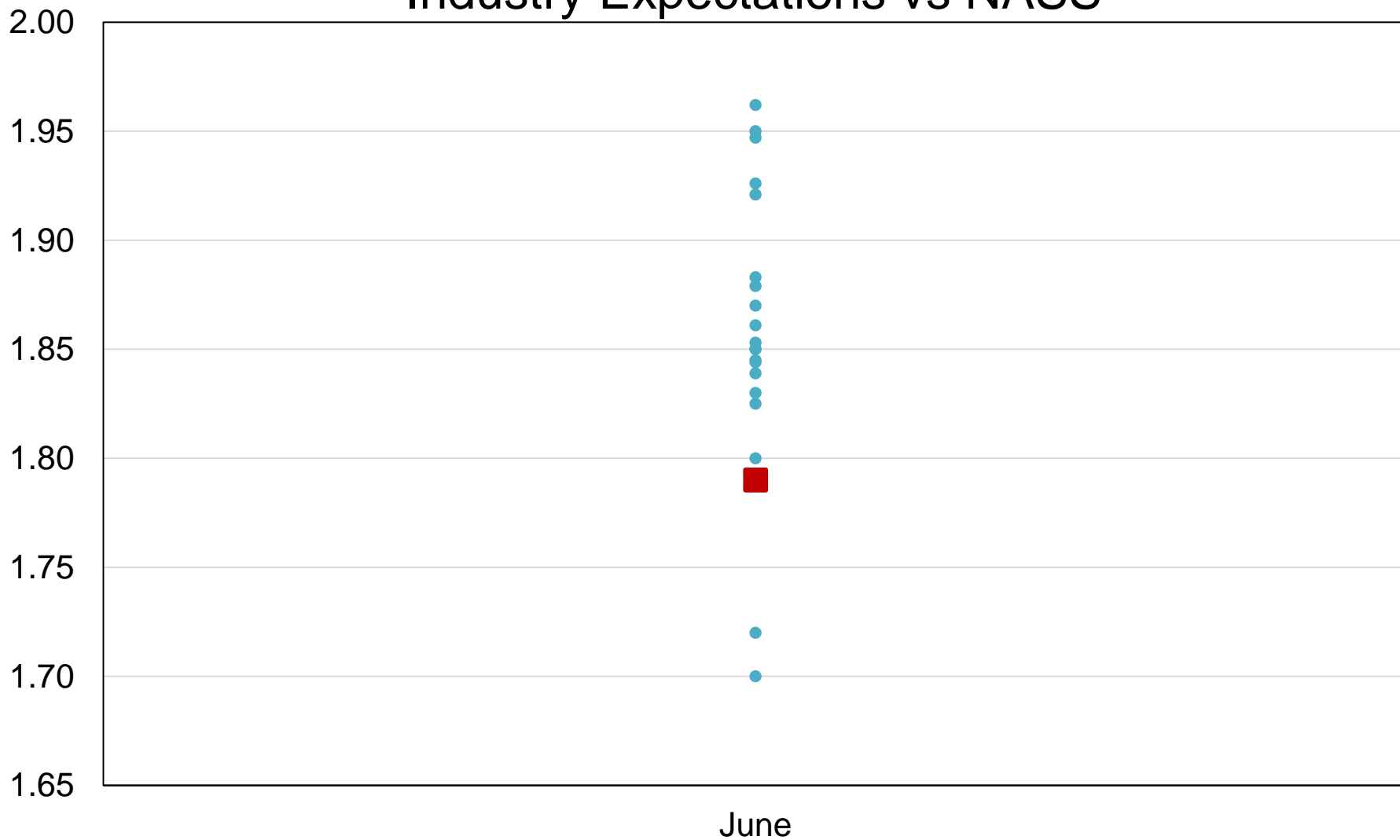
Billion Bushels





2019 United States Soybean Stocks Industry Expectations vs NASS

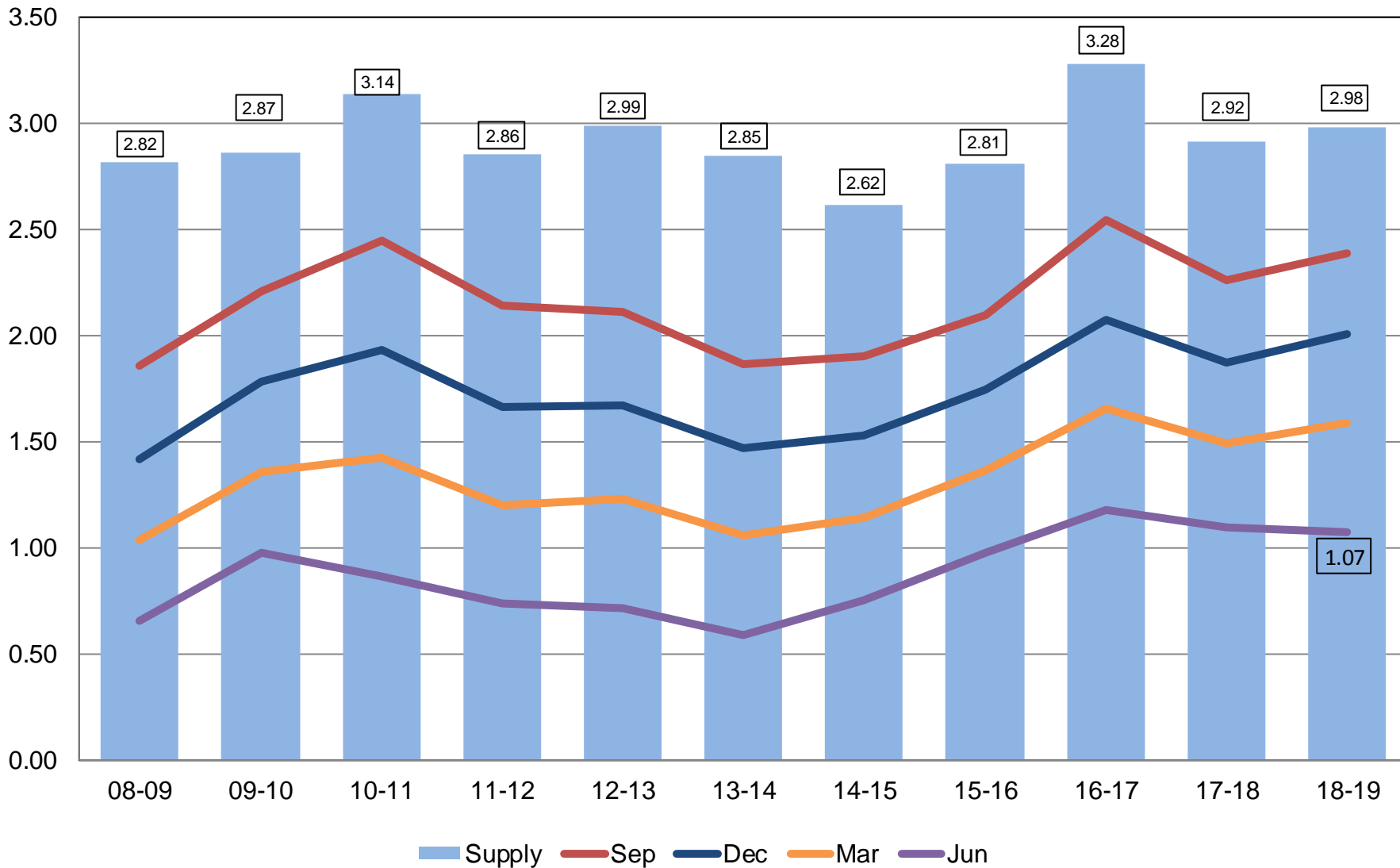
Billion Bushels



 NASS Forecast  Individual Industry Expectation

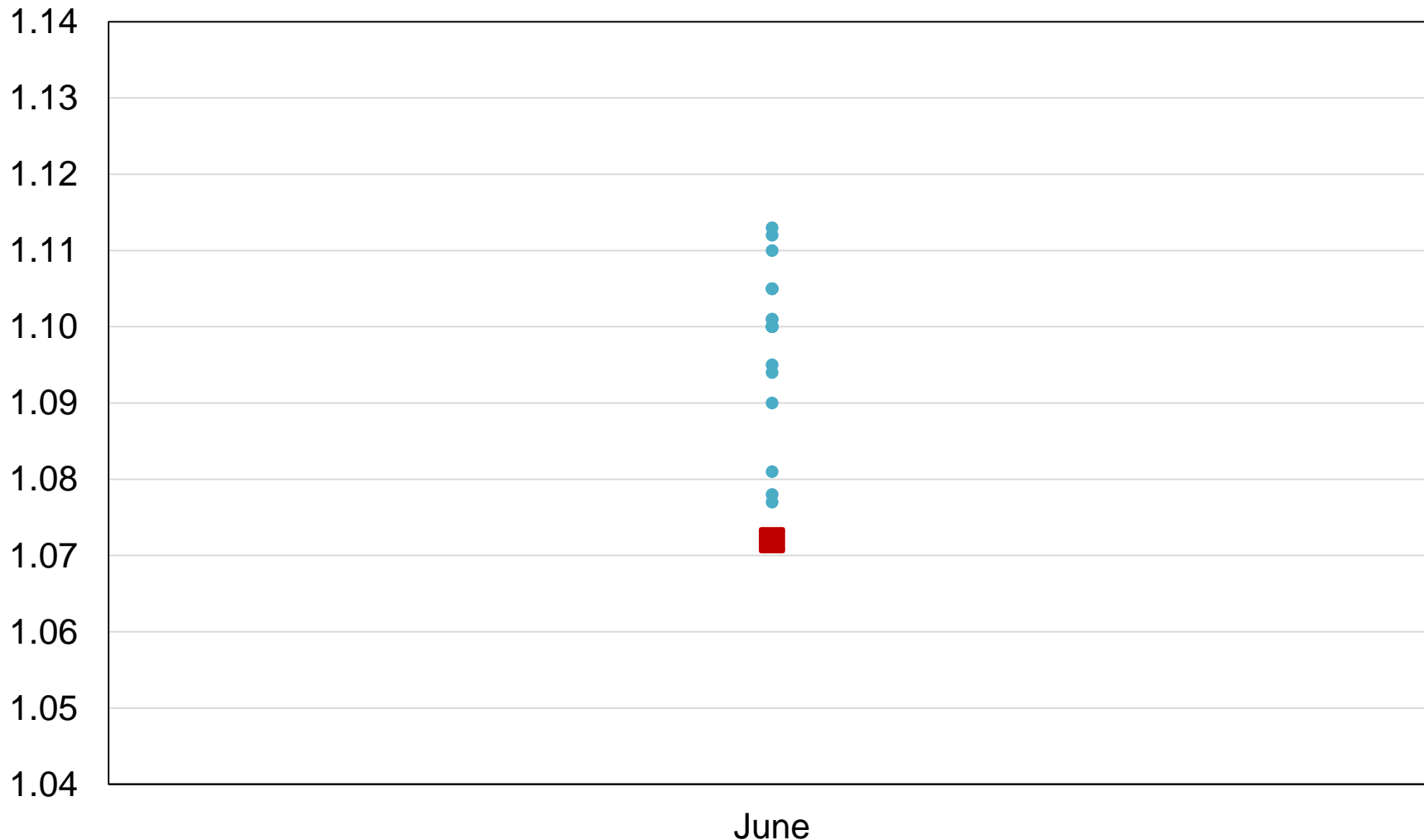
All Wheat Stocks United States

Billion Bushels



2019 United States All Wheat Stocks Industry Expectations vs NASS

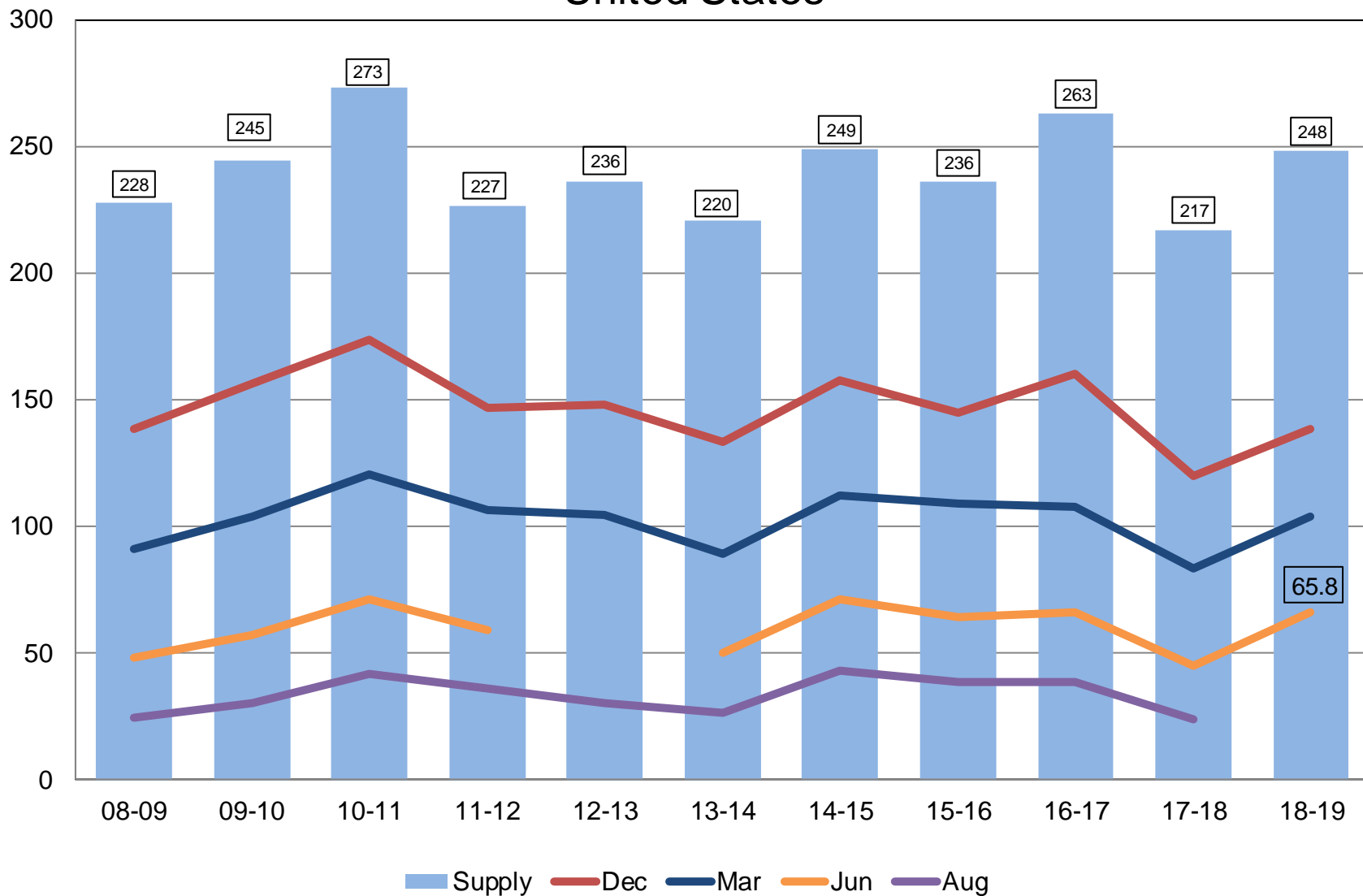
Billion Bushels



NASS Forecast Individual Industry Expectation

Rough Rice Stocks United States

Million Hundredweight





Upcoming Reports

Release Date	Report Title
July 1	CAIR: Cotton System, Fats & Oils, Grain Crushings
July 11	Crop Production
July 19	Cattle and Cattle on Feed
July 25	Census: Watersheds
July 31	Agricultural Prices

STAT CHAT SERIES

Join @usda_nass using #StatChat to ask NASS's Lance Honig about the June 28 *Acreage & Grain Stocks* reports.

**FRIDAY,
JUNE 28
1PM ET**

@usda_nass
#STATCHAT





United States Department of Agriculture
National Agricultural Statistics Service

All Reports Available At
www.nass.usda.gov

For Questions
202-720-2127
800-727-9540
nass@usda.gov