



United States Department of Agriculture
National Agricultural Statistics Service

Crop Production - Annual
Grain Stocks
Rice Stocks
Cotton Ginnings
Winter Wheat and Canola Seedings
January Crop Production
Executive Summary

Lance Honig, Chief
Crops Branch



Contents

Field Crops	Stocks	Fruit & Nuts	Specialty Crops
Corn	Corn	Citrus	Potatoes
Soybeans	Soybeans		Peppermint Oil
All Cotton	Sorghum		Spearmint Oil
Sorghum	Rice		Hops
Rice	Hay		
Hay & Forage	All Wheat		
Peanuts	Barley		
Proso Millet	Oats		
Minor Oilseeds			
Sugarcane			
Sugarbeets			
Tobacco			
Pulse Crops			
Winter Wheat			

Survey Overview

	December Ag Survey	Off-Farm Grain Stocks
Survey Type	Farmer Reported	Off-Farm Grain Stock Facilities
Collection Method	Mail, Phone, Internet, Personal Interview	Mail, Phone, Internet, Personal Interview
Crops Included	Field Crops	Corn, Soybeans, All Wheat, Durum Wheat, Barley, Oats, Sorghum, Pulse Crops
States	All except HI	All except AK, HI, and NV
Sample Size	78,637	~8,400
Collection Period	Nov 29 – Dec 17	Nov 29 – Dec 18



Principal Crops Planted Acreage

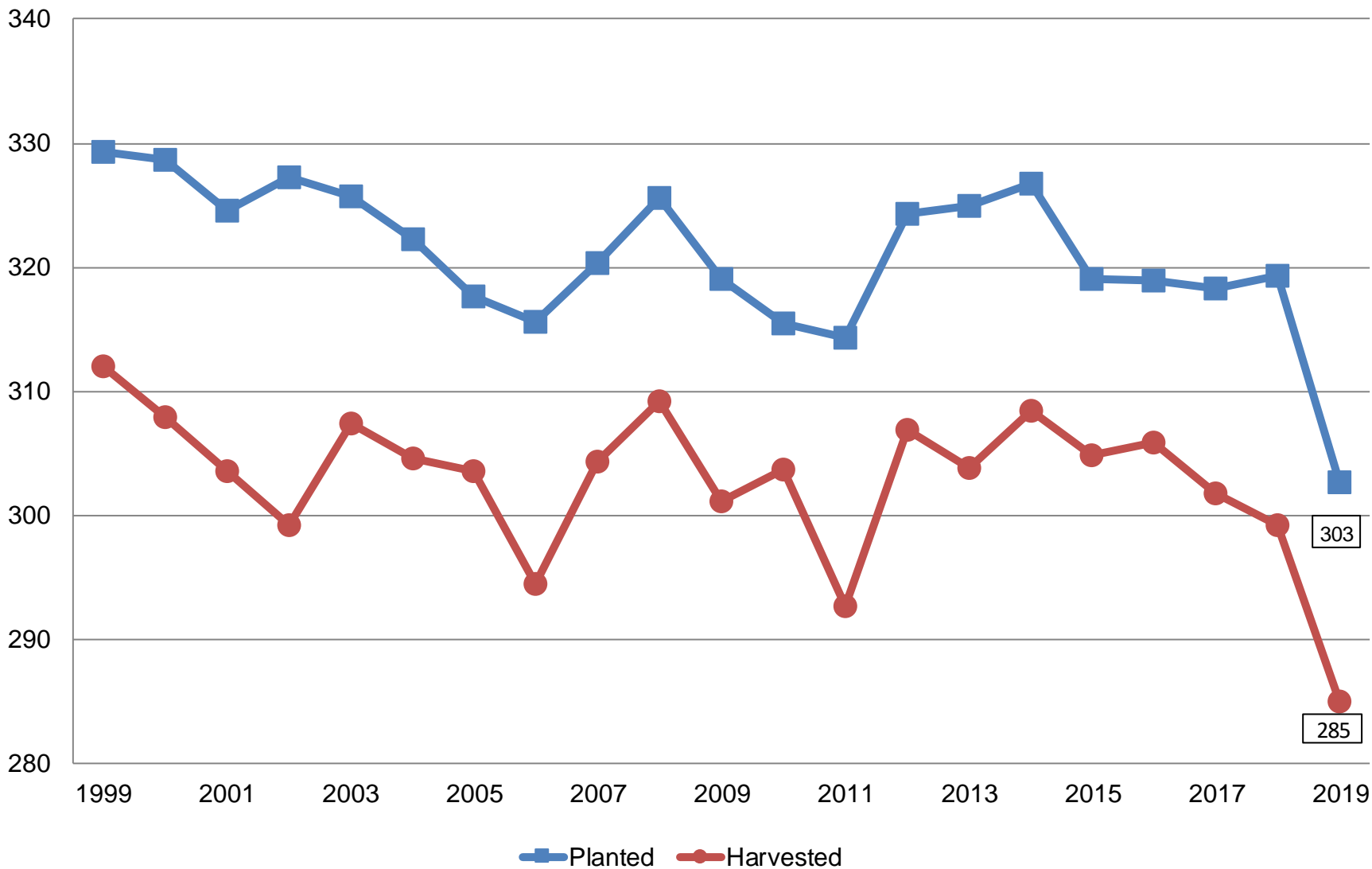
United States

Year	Principal Crops	Change From Previous Year
	<i>Million Acres</i>	
2010	315.4	-3.6
2011	314.3	-1.1
2012	324.3	+10.0
2013	324.9	+0.6
2014	326.7	+1.7
2015	319.1	-7.6
2016	319.0	-0.1
2017	318.3	-0.6
2018	319.3	+1.0
2019	302.6	-16.7



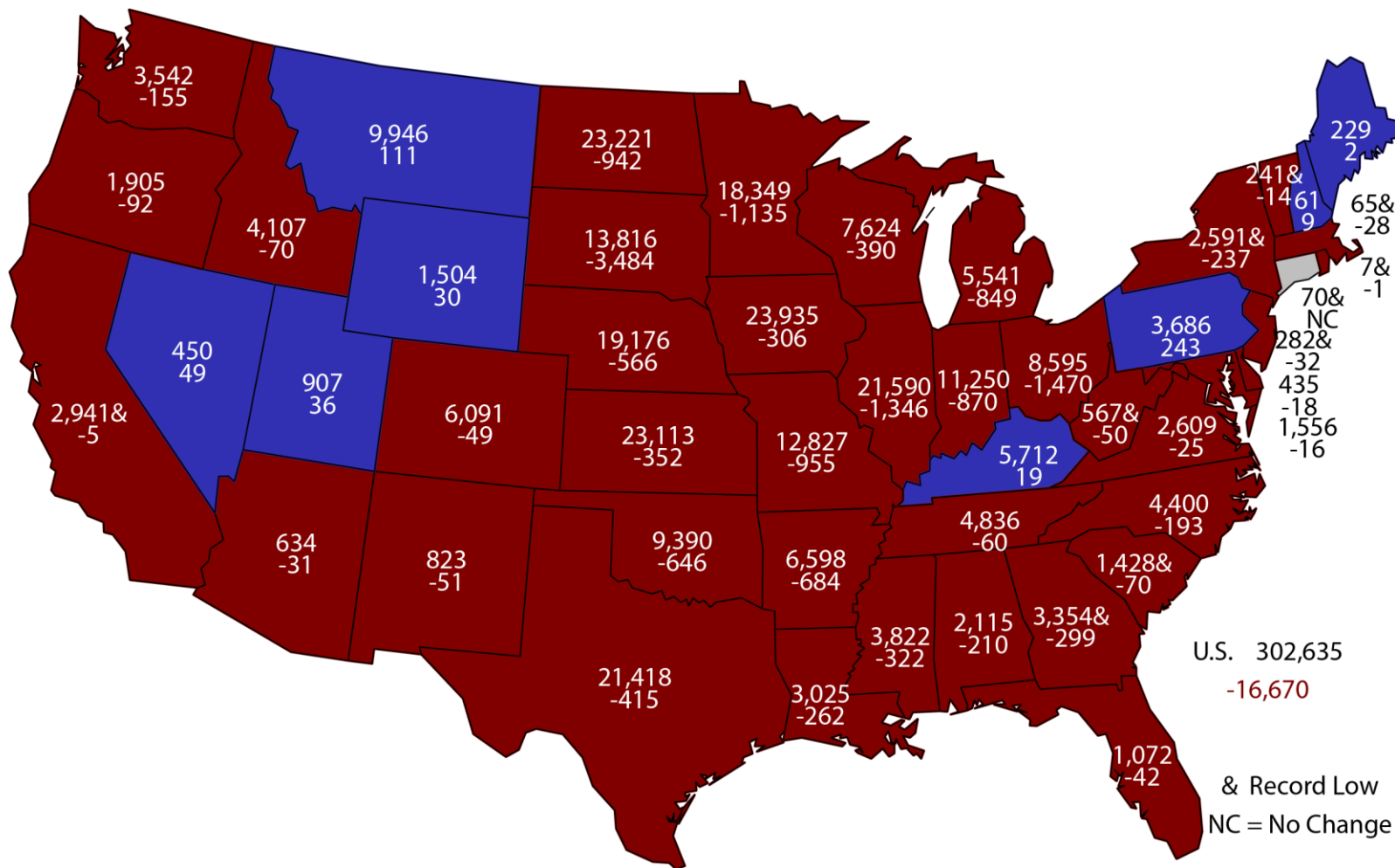
Principal Crops United States

Million Acres



2019 Principal Crops Planted Area

(000) Acres and Change From Previous Year



U.S. 302,635
-16,670

& Record Low
NC = No Change



Percent of Acres Remaining To Be Harvested

Crop	2009	2016	2017	2018	2019
Corn	9.9	0.5	1.1	2.5	8.0
Soybeans	3.0	0.2	0.5	3.4	2.0
Sorghum	7.0	0.4	0.3	4.0	0.9



2019 December APS Reinterview States

State	Crop(s)
Michigan	Corn, Soybeans
Minnesota	Corn
North Dakota	Corn, Soybeans
South Dakota	Corn
Wisconsin	Corn, Soybeans



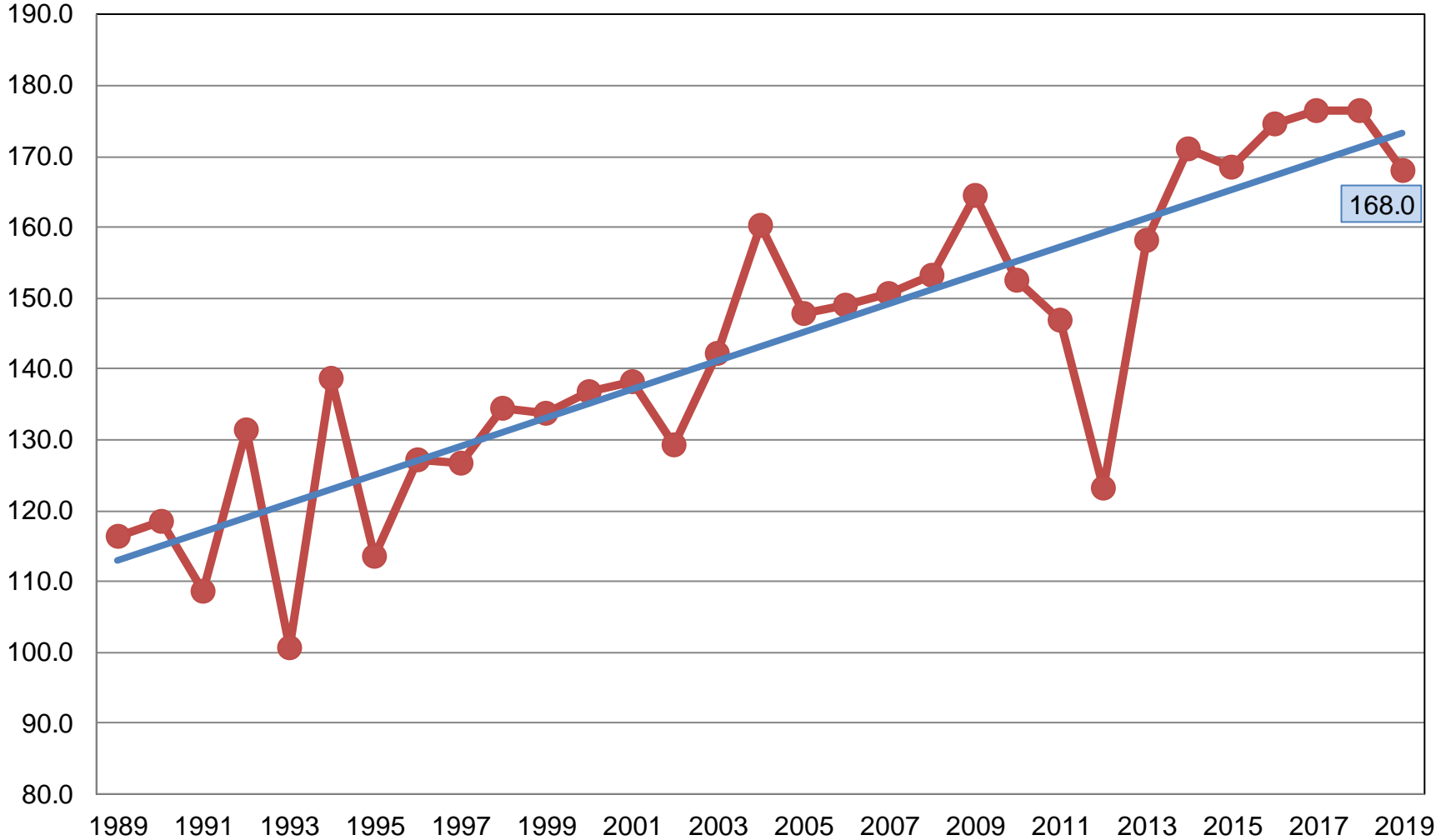
2019 Crop Production – Annual

Crop	Unit	January 2020	% Change From Previous Forecast	% Change From Previous Season
Corn				
Planted	Mil Ac	89.7	-0.3	+0.9
Harvested	Mil Ac	81.5	-0.4	+0.3
Yield	Bu/Ac	168.0	+0.6	-4.8
Production	Bil Bu	13.7	+0.2	-4.5
Stocks	Bil Bu	11.4	NA	-4.6



Corn for Grain Yield United States

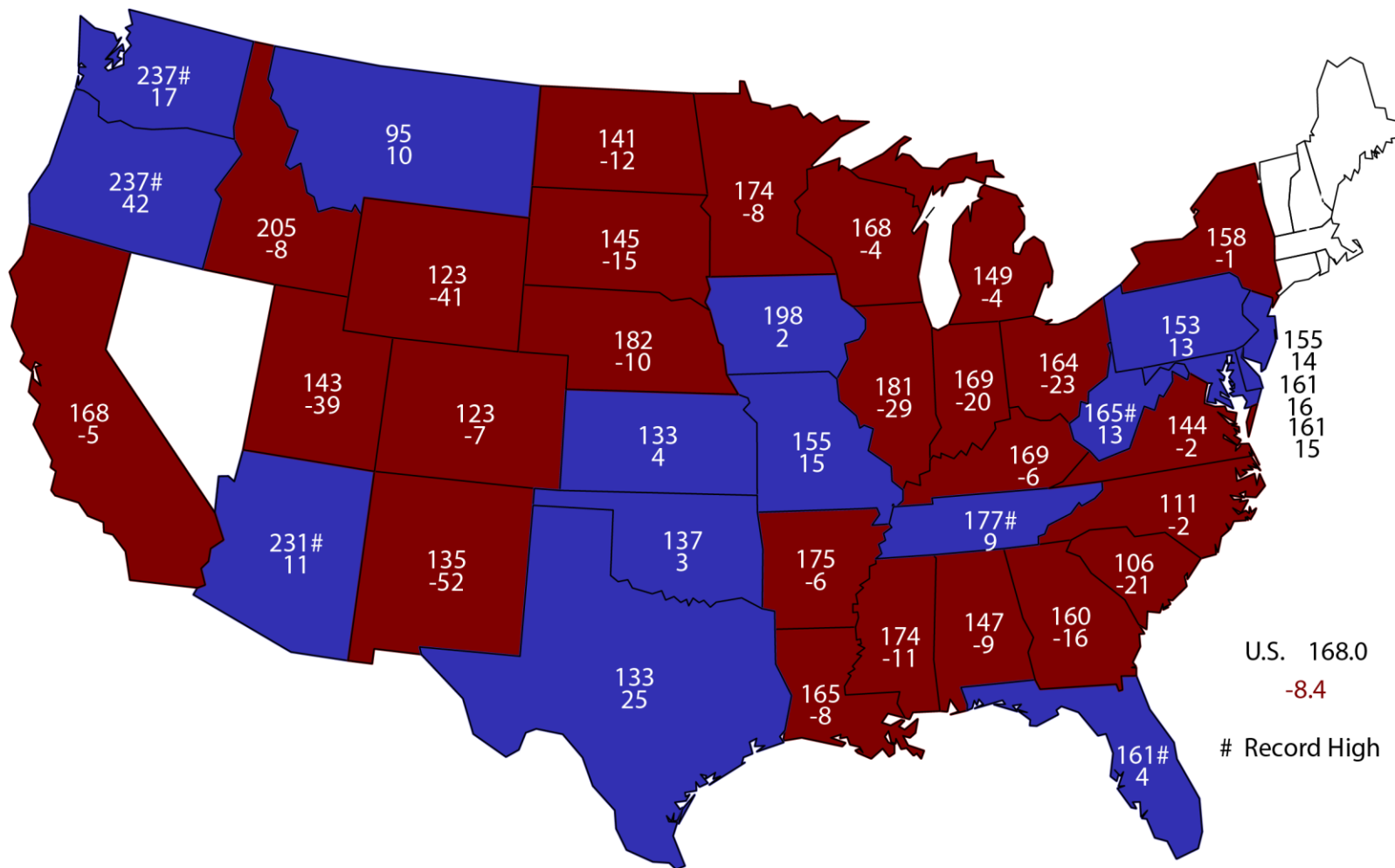
Bushels per Acre



Yield Linear (Yield)

2019 Corn Yield

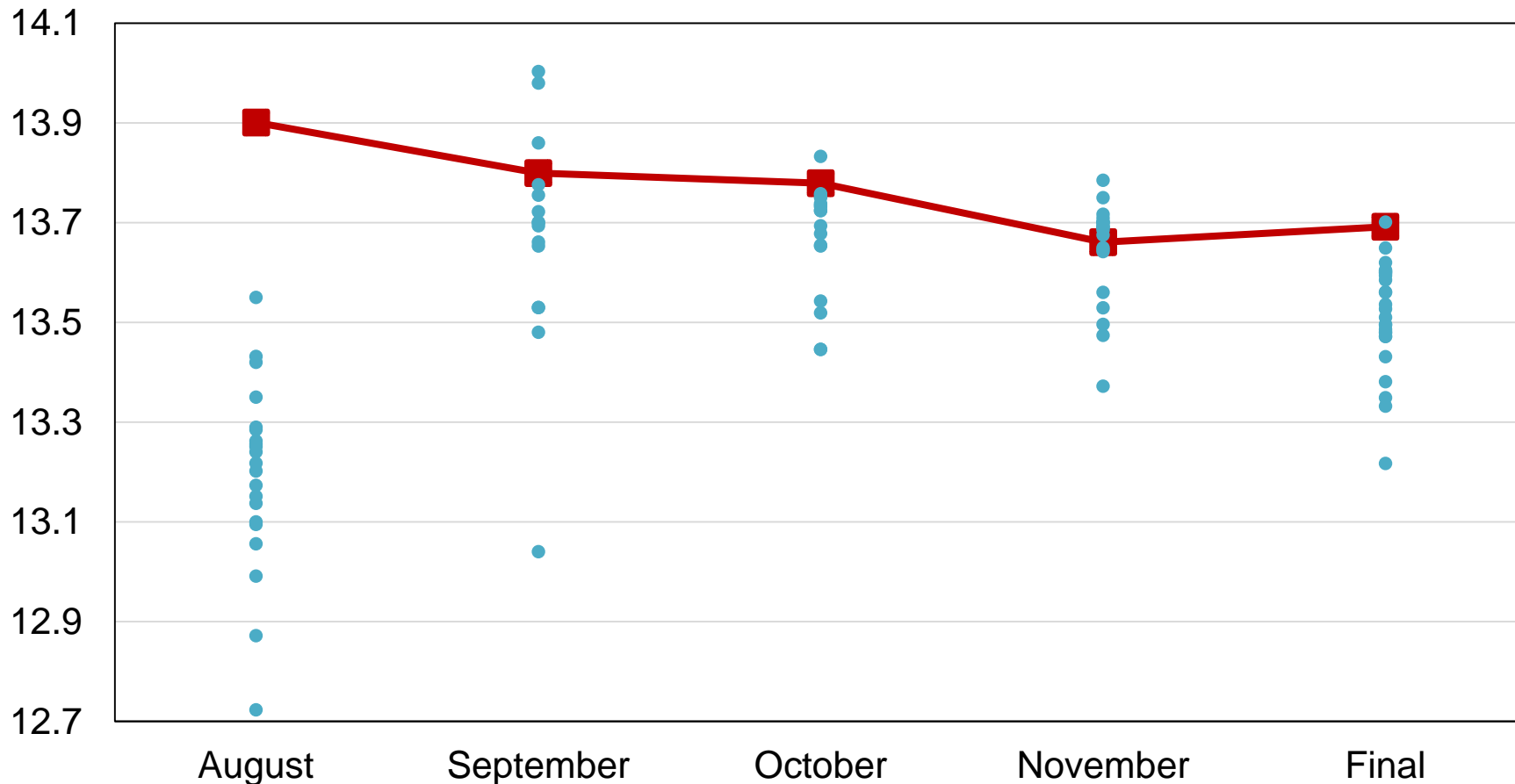
Bushels and Change From Previous Year



U.S. 168.0
-8.4
Record High

2019 United States Corn Production Industry Expectations vs NASS

Billion Bushels

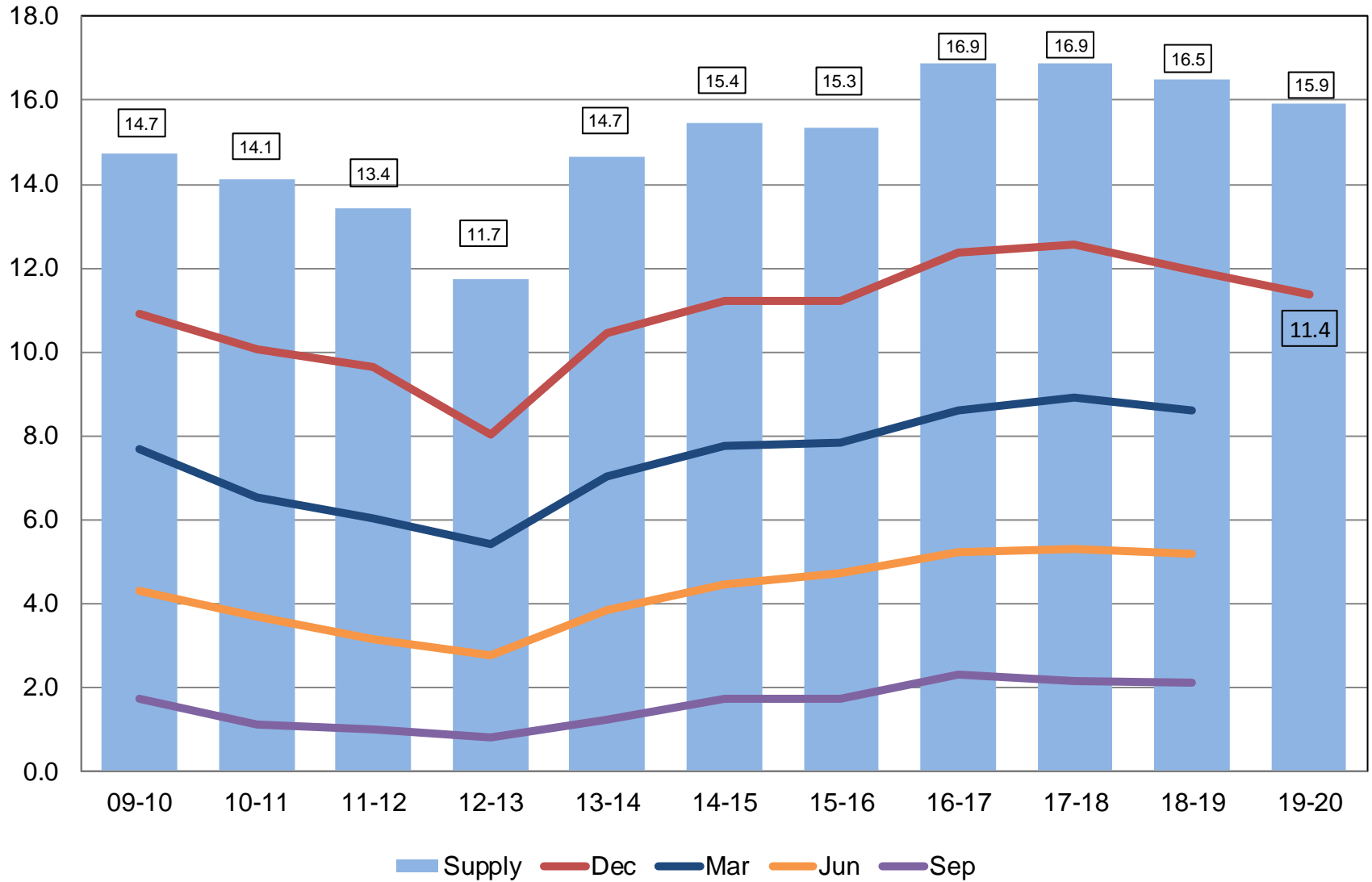


■ NASS Forecast
 ● Individual Industry Expectation



Corn Stocks United States

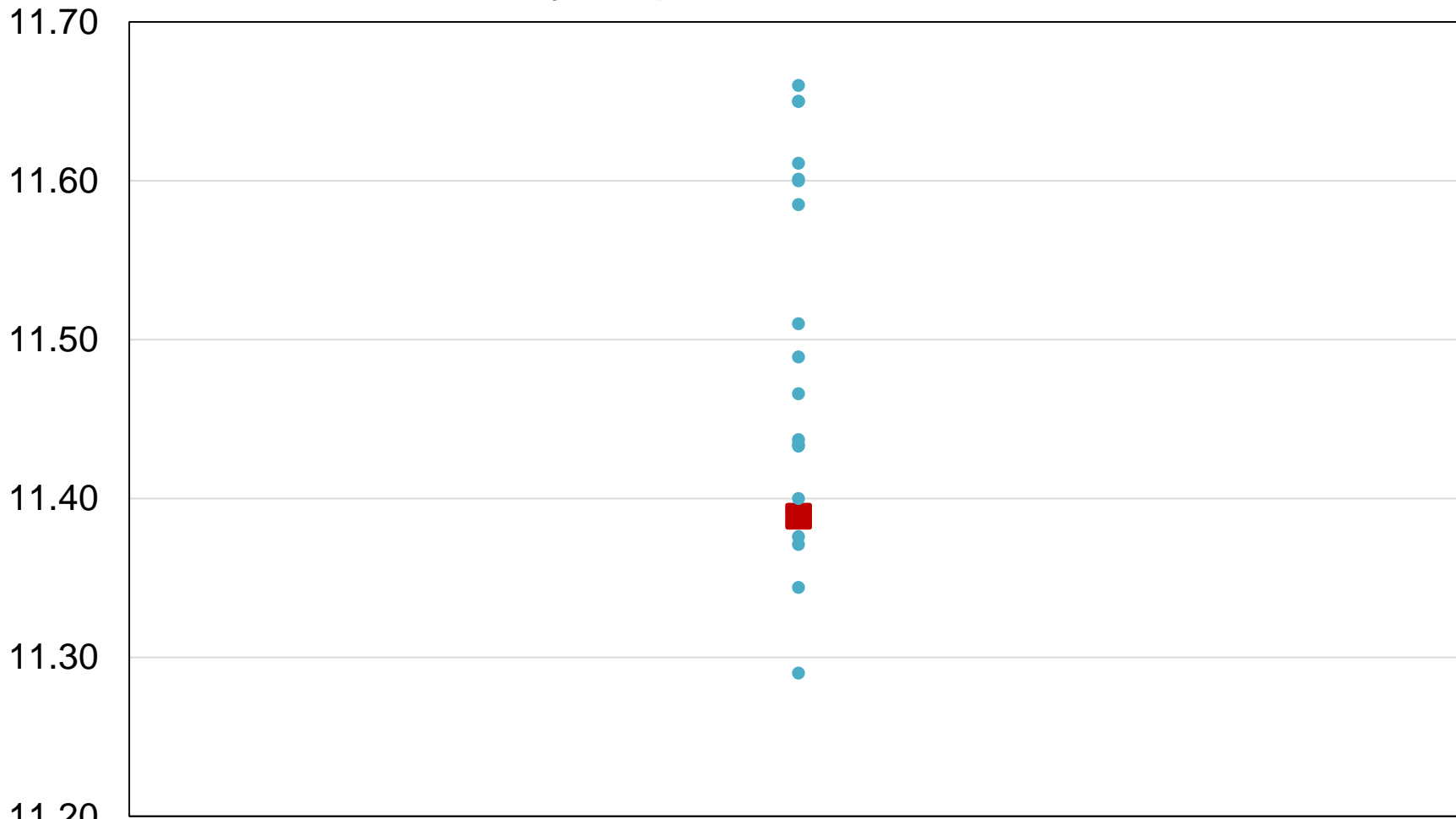
Billion Bushels





2019 United States Corn Stocks Industry Expectations vs NASS

Billion Bushels



December

 NASS Estimates  Individual Industry Expectation



2018 Corn Crop

	Previous Estimates	Jan 10 Estimates	Change
	<i>Million Bushels</i>		
Sept 1, 2018 Stocks	2,140	2,140	NC
2018 Production	14,420	14,340	-80
Imports	*28	*28	NC
Total Supply	16,588	16,508	-80
Exports	*2,065	*2,065	NC
Food, Seed, and Industrial	*6,791	*6,791	NC
Measured Disappearance	8,856	8,856	NC
Ending Stocks	2,114	2,221	+107
Feed and Residual	*5,618	*5,432	-186

*From WASDE Report



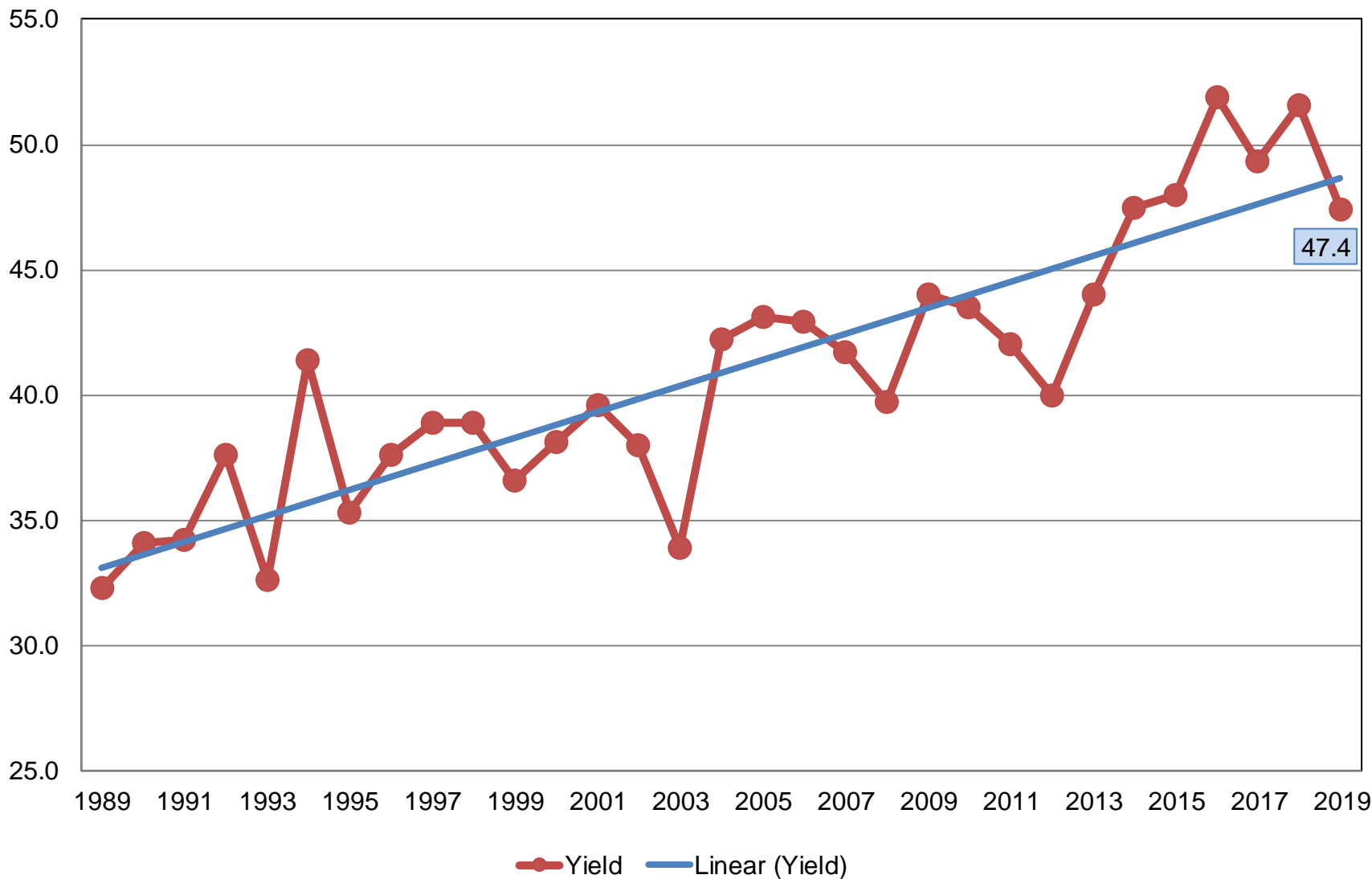
2019 Crop Production – Annual

Crop	Unit	January 2020	% Change From Previous Forecast	% Change From Previous Season
Soybeans				
Planted	Mil Ac	76.1	-0.5	-14.7
Harvested	Mil Ac	75.0	-0.8	-14.4
Yield	Bu/Ac	47.4	+1.1	-6.3
Production	Bil Bu	3.56	+0.2	-19.6
Stocks	Bil Bu	3.25	NA	-13.2



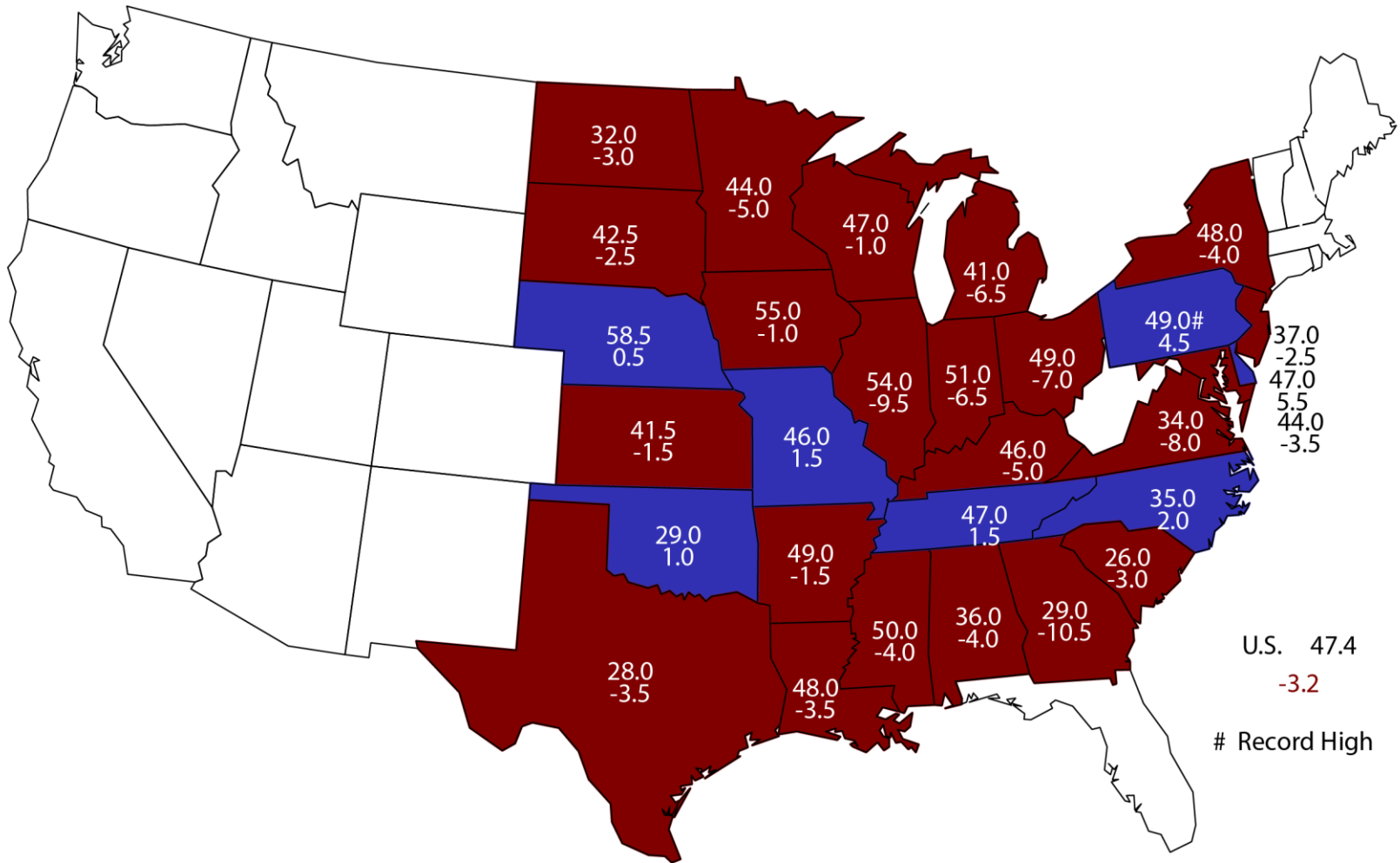
Soybean Yield United States

Bushels per Acre



2019 Soybean Yield

Bushels and Change From Previous Year

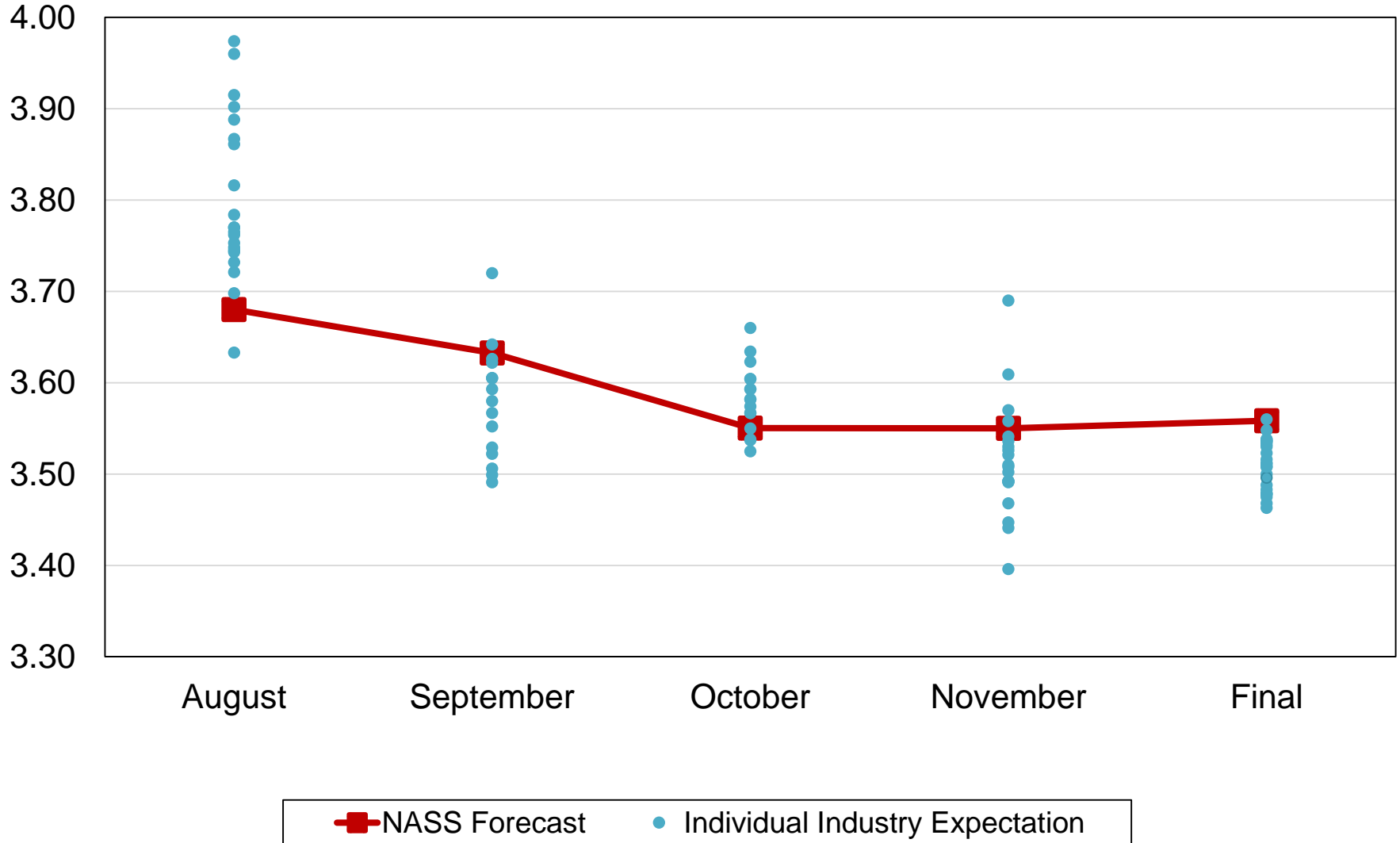


U.S. 47.4
 -3.2
 # Record High



2019 United States Soybean Production Industry Expectations vs NASS

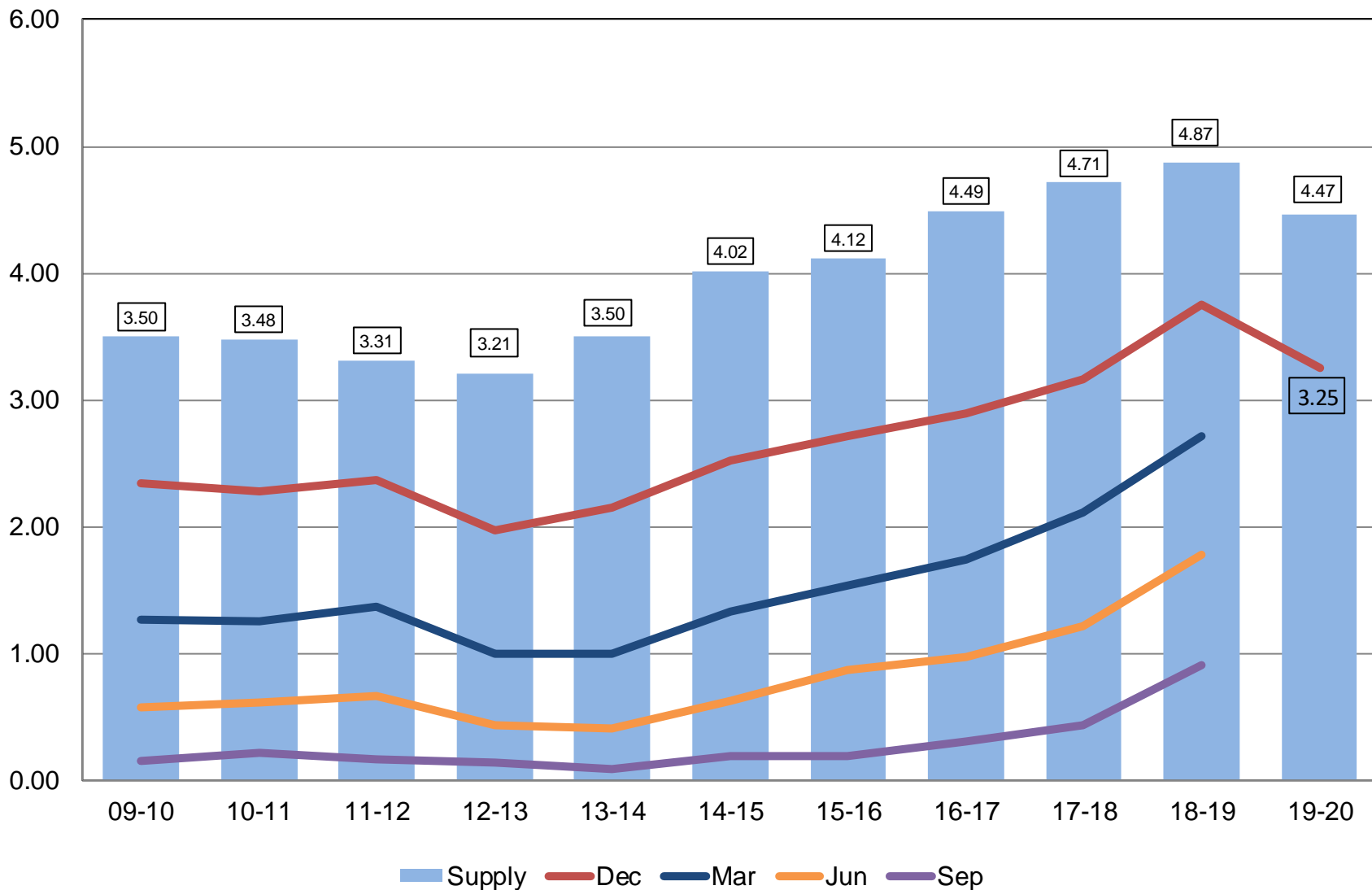
Billion Bushels





Soybean Stocks United States

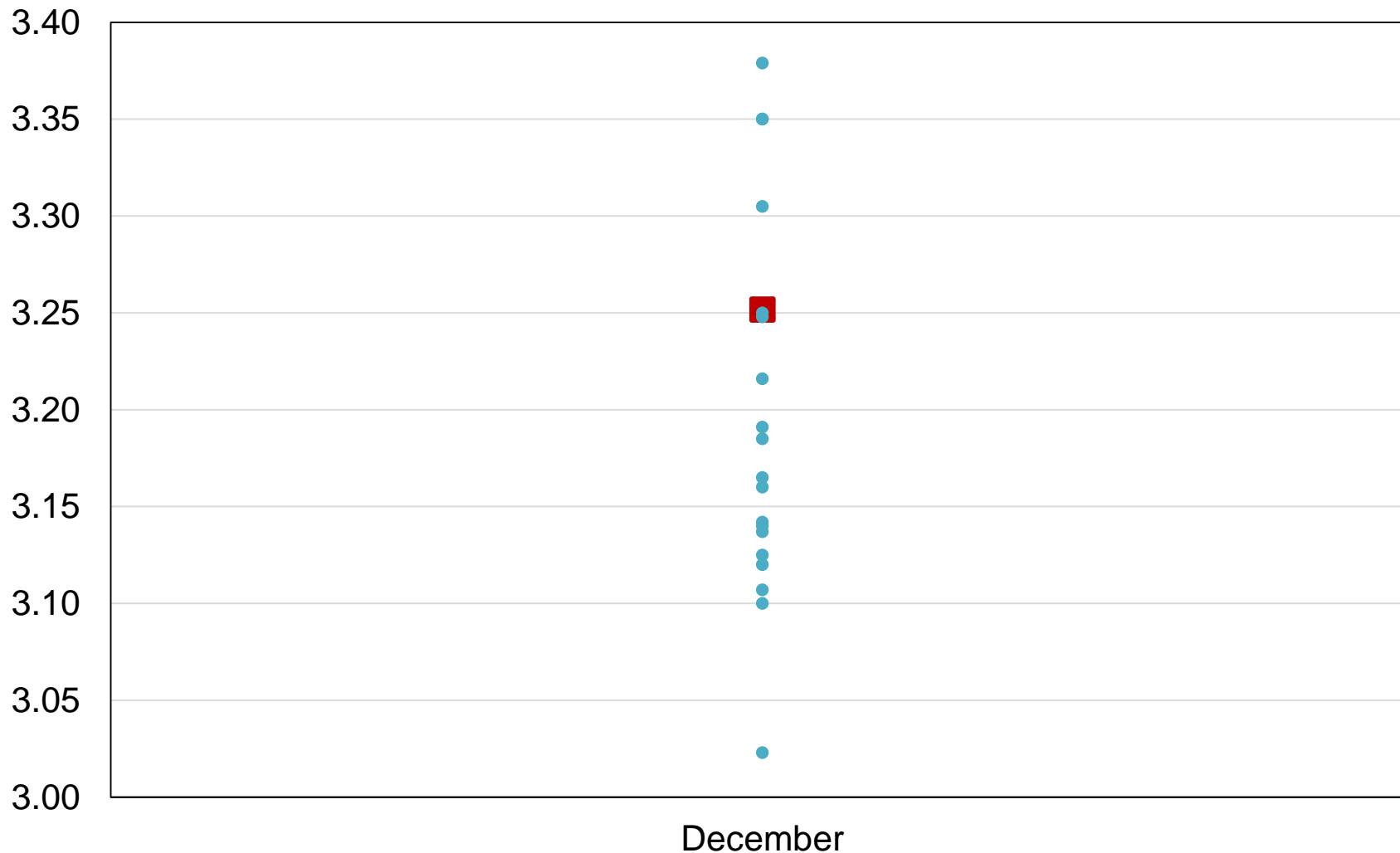
Billion Bushels





2019 United States Soybean Stocks Industry Expectations vs NASS

Billion Bushels



 NASS Estimates  Individual Industry Expectation

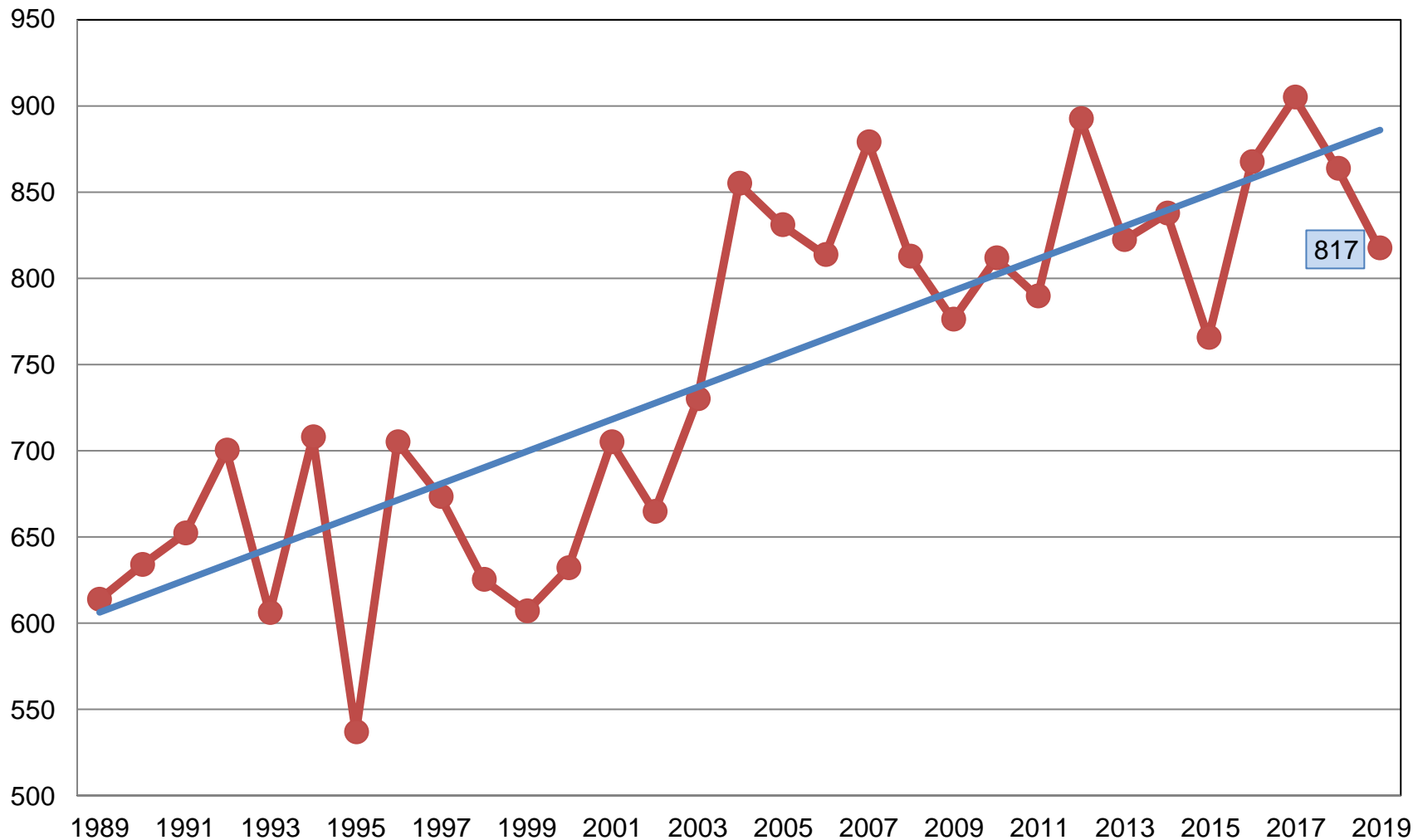


2019 Crop Production – Annual

Crop	Unit	January 2020	% Change From Previous Estimate	% Change From Previous Season
All Cotton				
Planted	Mil Ac	13.7	-0.2	-2.6
Harvested	Mil Ac	11.8	-5.6	+15.7
Yield	Lb/Ac	817	+5.4	-5.4
Production	Mil Bls	20.1	-0.5	+9.4
Cottonseed				
Production	Mil Tons	6.23	-0.5	+10.7

All Cotton Yield United States

Pounds per Acre

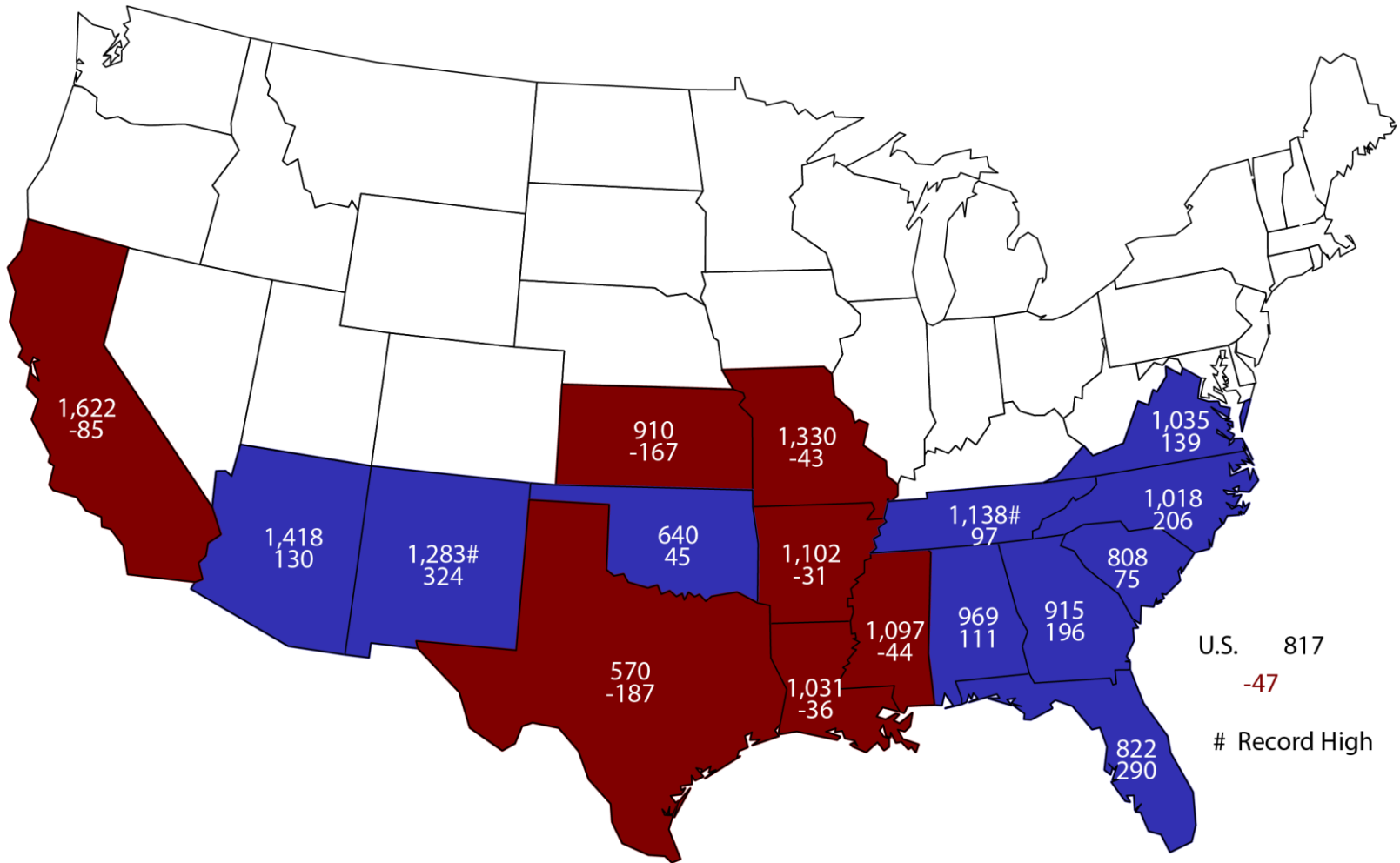


● Yield — Linear (Yield)



2019 All Cotton Yield

Pounds and Change From Previous Year



U.S. 817
-47
Record High



2019 Crop Production – Annual

Crop	Unit	January 2020	% Change From Previous Forecast	% Change From Previous Season
Sorghum				
Planted	Mil Ac	5.27	+0.1	-7.5
Harvested	Mil Ac	4.68	-0.8	-7.6
Yield	Bu/Ac	73.0	-3.8	+1.2
Production	Mil Bu	341	-4.5	-6.4
Stocks	Mil Bu	249	NA	-3.8



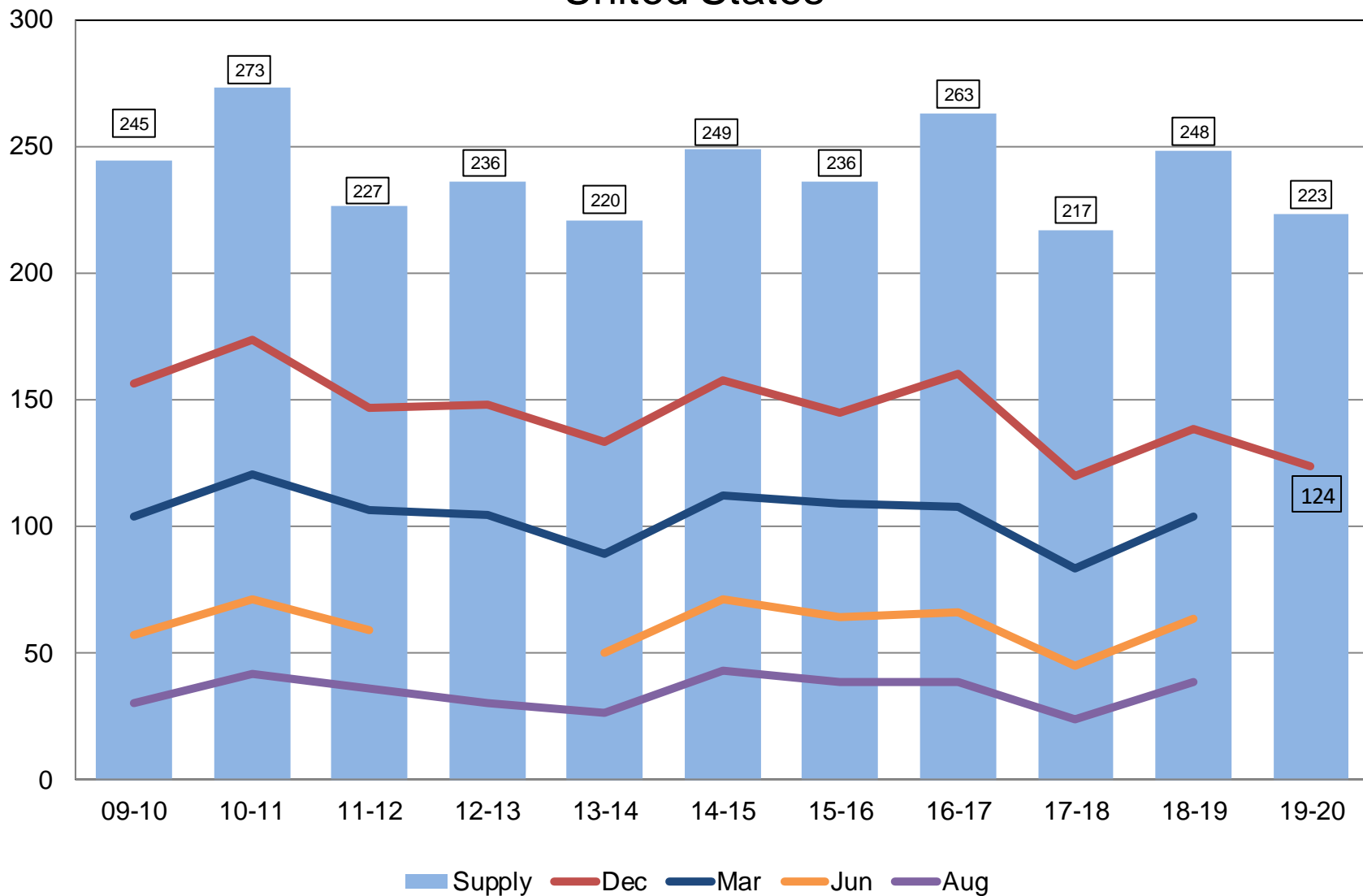
2019 Crop Production – Annual

Crop	Unit	January 2020	% Change From Previous Forecast	% Change From Previous Season
Rice				
Planted	Mil Ac	2.54	NC	-13.8
Harvested	Mil Ac	2.47	-0.2	-15.1
Yield	Lbs/Ac	7,471	-1.5	-2.9
Production	Mil Cwt	185	-1.7	-17.5
Stocks	Mil Cwt	124	NA	-10.8

Rough Rice Stocks

United States

Million Hundredweight



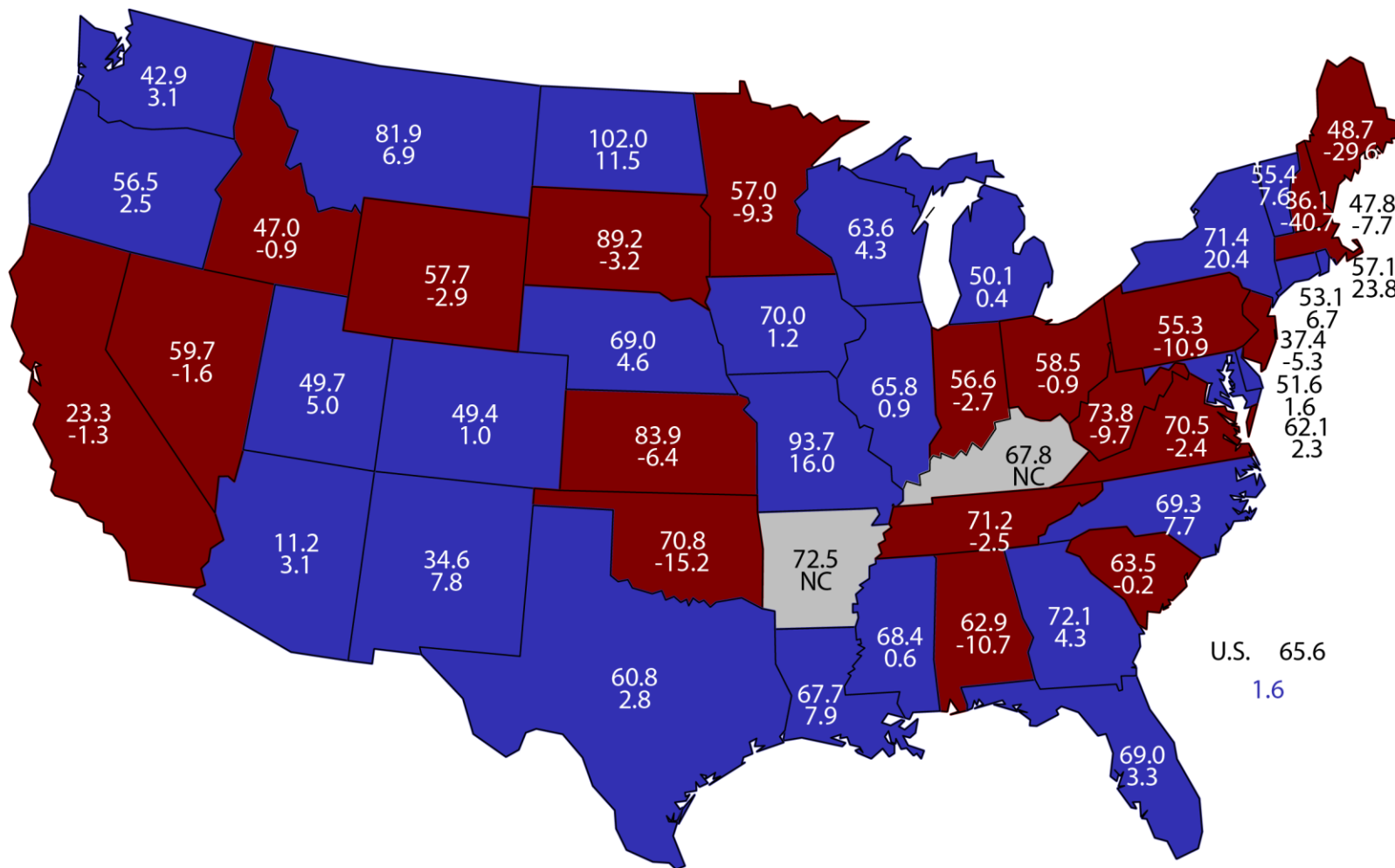


2019 Crop Production – Annual

Crop	Unit	January 2020	% Change From Previous Forecast	% Change From Previous Season
All Hay				
Harvested	Mil Ac	52.4	-0.7	-0.8
Yield	Tons/Ac	2.46	-0.8	+5.1
Production	Mil Tons	129	-1.6	+4.3
Stocks	Mil Tons	84.5	NA	+6.9

December 1, 2019 Hay Stocks/Production

Percent and Change From Previous Year





2019 Crop Production – Annual

Crop	Unit	January 2020	% Change From Previous Forecast	% Change From Previous Season
Production				
All Other Hay	Mil Tons	74.0	-3.6	+4.3
Alfalfa Hay	Mil Tons	54.9	+1.2	+4.3
Proso Millet	Mil Bu	16.6	NA	+43.2
Peanuts	Bil Lbs	5.50	-2.6	+<0.1



2019 Crop Production – Annual

Crop	Unit	January 2020	% Change From Previous Forecast	% Change From Previous Season
Production				
Canola	Bil Lbs	3.40	-8.3	-5.9
Flaxseed	Mil Bu	6.40	NA	+43.2
Mustard Seed	Mil Lbs	63.6	NA	-13.3
Rapeseed	Mil Lbs	22.5	NA	+173.0
Safflower	Mil Lbs	194	NA	-17.8
Sunflowers	Bil Lbs	1.94	-13.7	-7.8



2019 Crop Production – Annual

Crop	Unit	January 2020	% Change From Previous Forecast	% Change From Previous Season
All Tobacco	Mil Lbs	468	+4.4	-12.2
Sugarbeets	Mil Tons	28.6	-3.0	-14.1
Sugarcane	Mil Tons	31.8	-2.7	-7.9



2019 Crop Production – Annual

Crop	Unit	January 2020	% Change From Previous Forecast	% Change From Previous Season
Production				
Chickpeas	Mil Cwt	6.24	-13.1	-52.2
Dry Peas	Mil Cwt	22.3	+0.3	+37.0
Dry Beans	Mil Cwt	20.8	-12.6	-44.9
Lentils	Mil Cwt	5.39	-17.8	-35.9



2019 Crop Production – Annual

Crop	Unit	January 2020	% Change From Previous Forecast	% Change From Previous Season
Production				
Potatoes	Mil Cwt	423	+0.1	-6.0
Peppermint Oil	Mil Lbs	5.45	NA	+1.4
Spearmint Oil	Mil Lbs	2.41	NA	-6.1
Hops	Mil Lbs	112	NC	+4.8



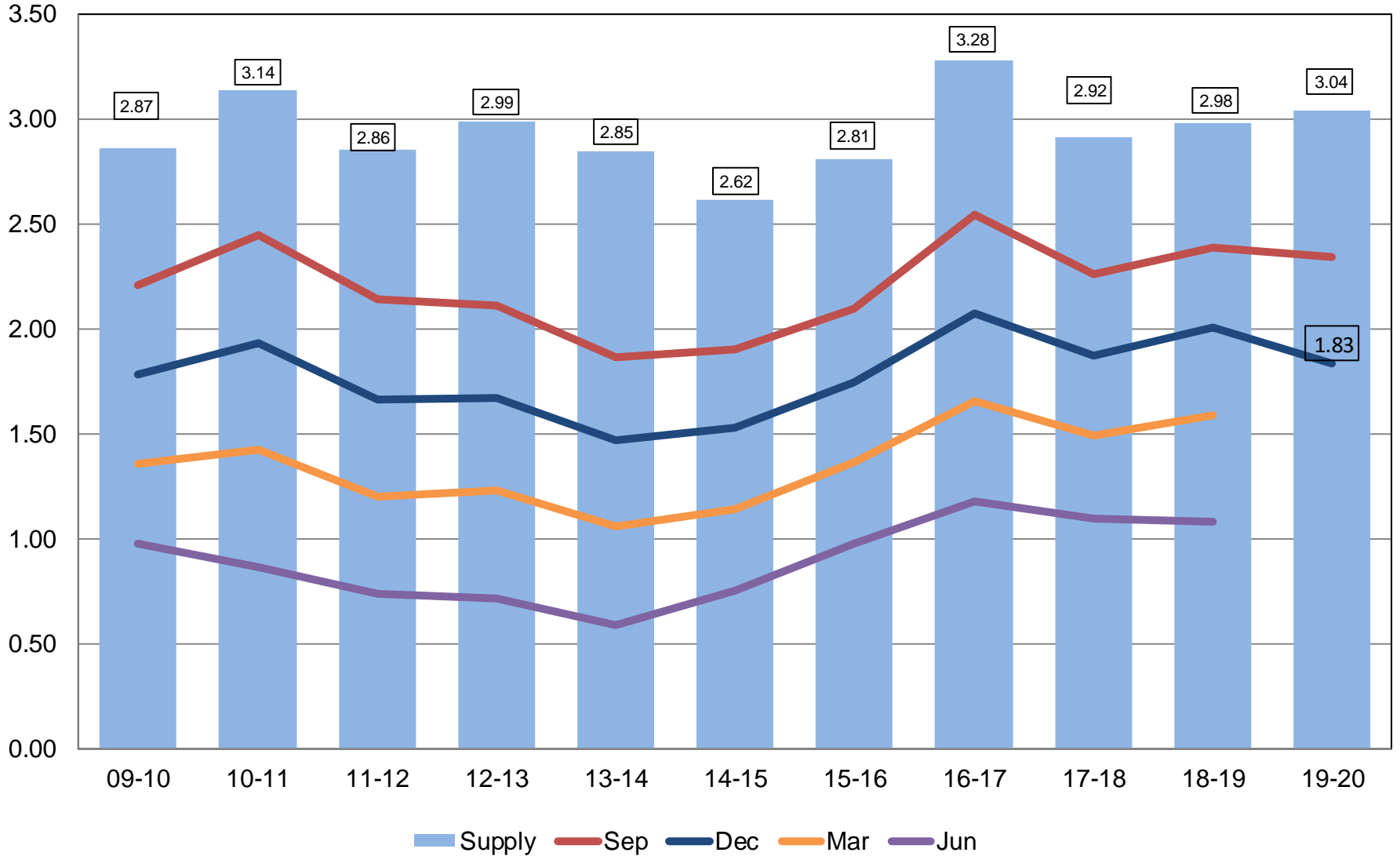
2019 Crop Production – Annual

Crop	Unit	January 2020	% Change From Previous Estimate	% Change From Previous Year
Stocks				
All Wheat	Bil Bu	1.83	NA	-8.7
Barley	Mil Bu	151	NA	-0.9
Oats	Mil Bu	54.0	NA	-19.8



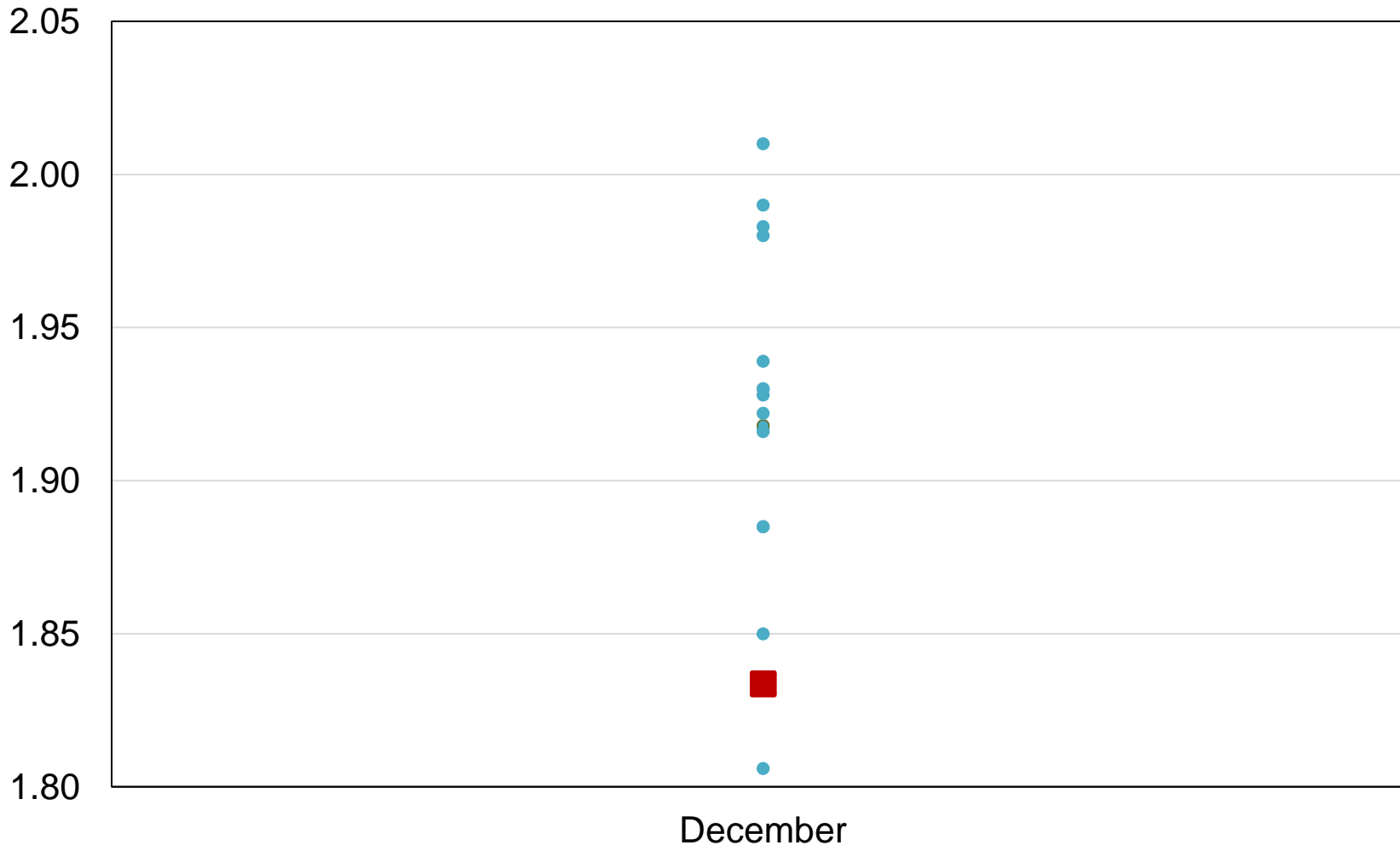
All Wheat Stocks United States

Billion Bushels



2019 United States All Wheat Stocks Industry Expectations vs NASS

Billion Bushels



 NASS Estimates  Individual Industry Expectation



Winter Wheat Seedings

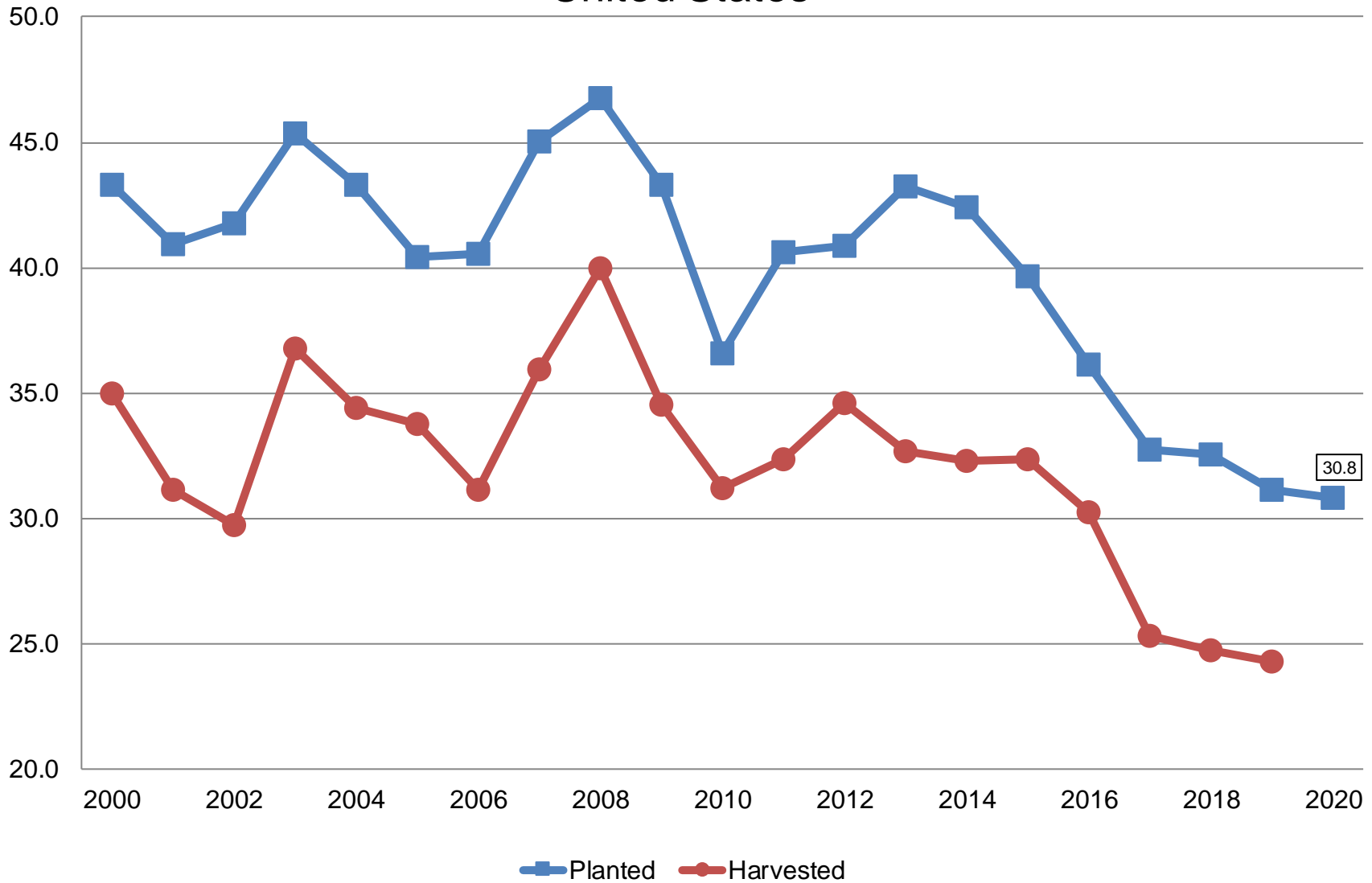
Crop	Unit	January 2020	% Change From Previous Forecast	% Change From Previous Season
Wheat, Winter				
Planted	Mil Ac	30.8	NA	-1.1



Winter Wheat Acres

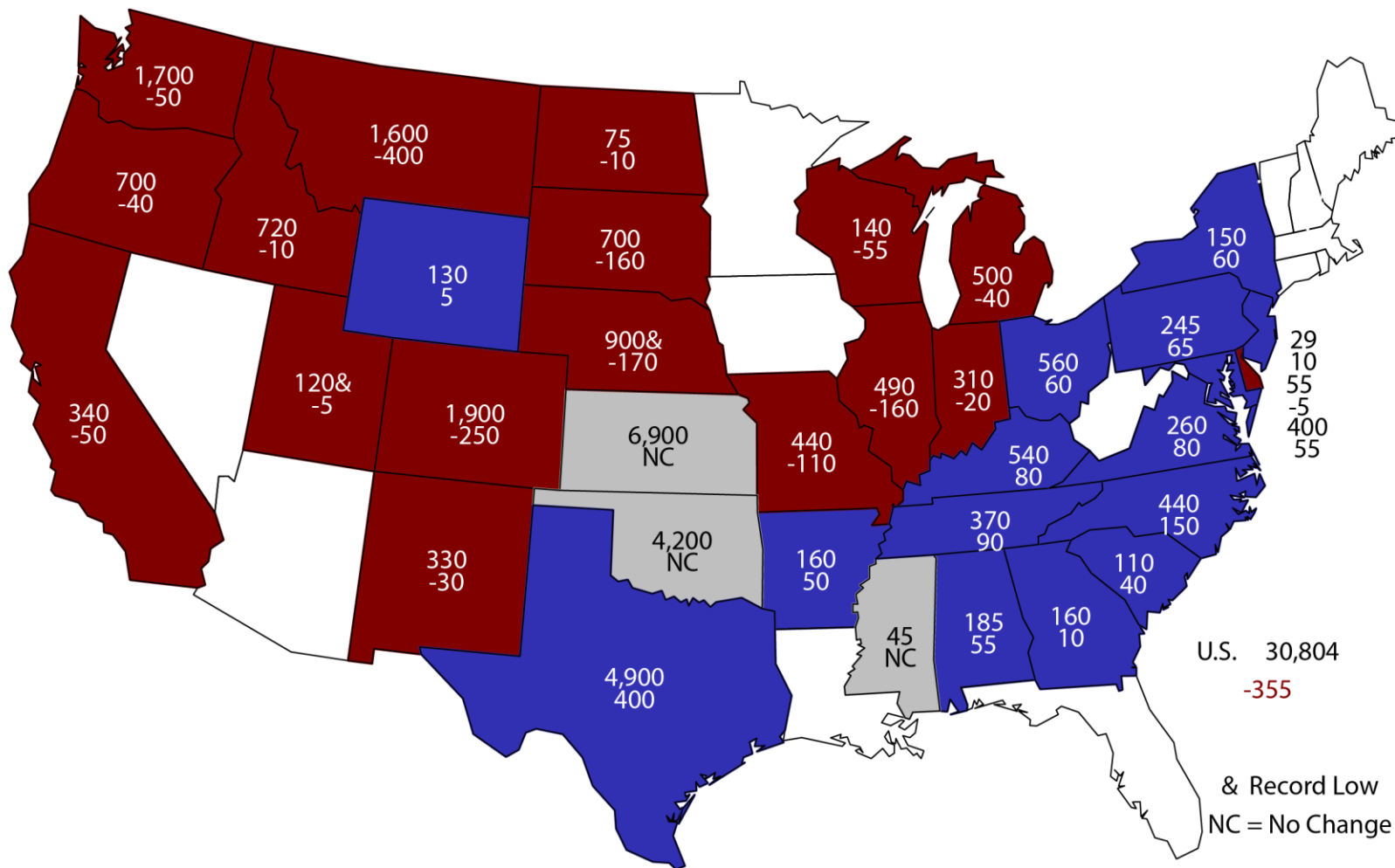
United States

Million Acres



2020 Winter Wheat Planted Area

(000) Acres and Change From Previous Year

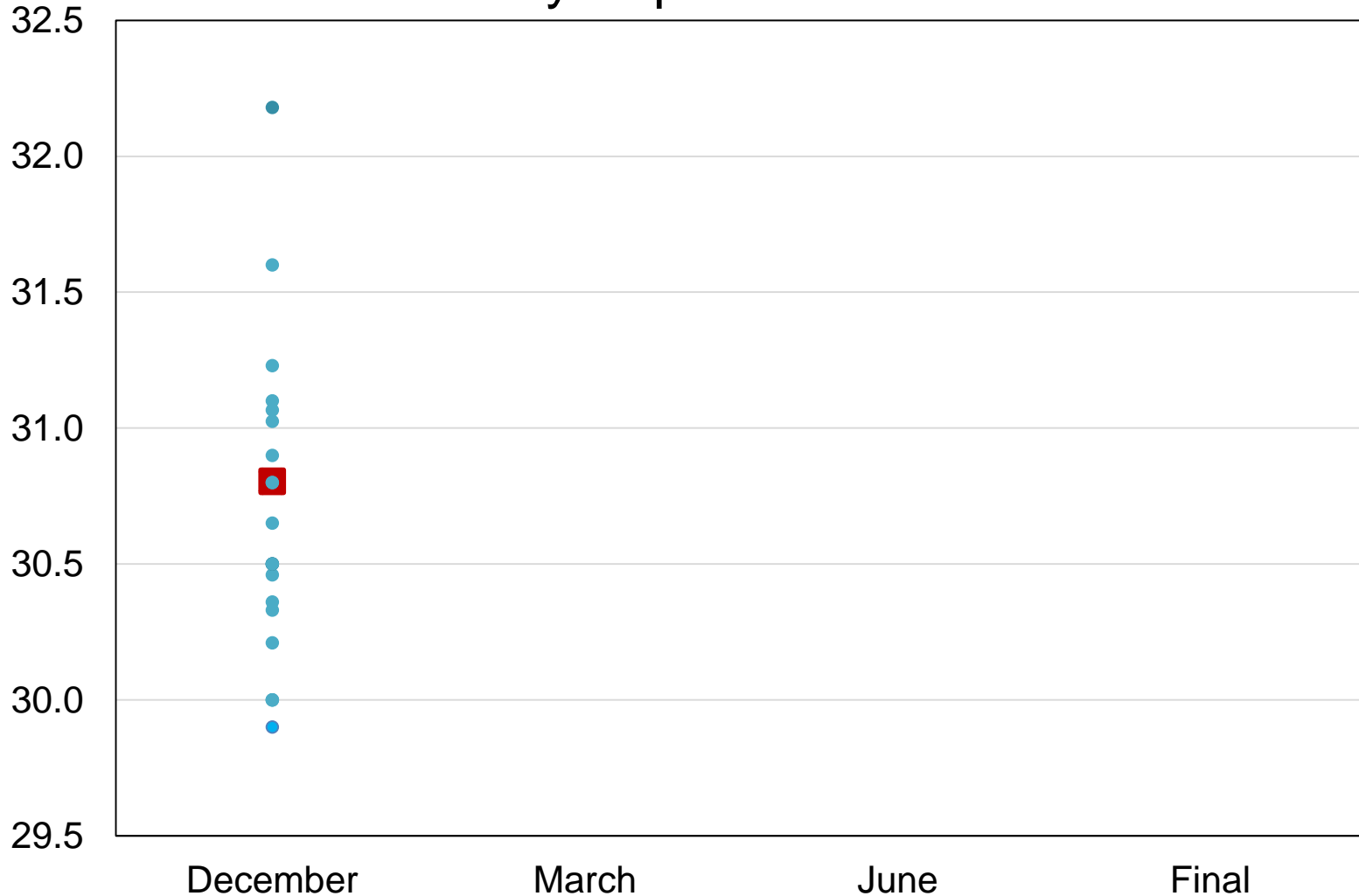


& Record Low
NC = No Change



2020 United States Winter Wheat Acres Industry Expectations vs NASS

Million Acres



■ NASS Estimate ● Individual Industry Expectation



Survey Overview

Florida Citrus

	Objective Measurement	Row Count
Survey Type	Field Measurement	Field Observation
Crops Included	Oranges, Grapefruit, Tangerines	Non-Valencia Oranges, Tangerines, and Tangelos
Sample Size	1,838 groves	151,980 rows
Collection Period	December 10 - 27	December 30 - 31



January 2020 Crop Production

Crop	Unit	January 2020	% Change From Previous Forecast	% Change From Previous Season
Production				
Oranges	Mil Tons	5.40	+1.4	+1.4
Grapefruit	Thou Tons	641	+6.1	+13.7
Tangerines & Mandarins	Thou Tons	930	-4.1	-14.4
Lemons	Thou Tons	816	-4.7	-15.5



Upcoming Reports

Release Date	Report Title
January 23	Cotton Ginnings
January 24	Cattle on Feed
January 31	Cattle Sheep and Goats Agricultural Prices
February 3	CAIR: Cotton System, Fats & Oils, and Grain Crushings
February 11	Cotton Ginnings Crop Production

USDA's Agricultural Outlook Forum

96th Annual The Innovation Imperative: *Shaping the Future of Agriculture*

February 21-22, 2020 • Crystal Gateway Marriott Hotel, Arlington, Virginia

The Agricultural Outlook Forum

- USDA's largest annual gathering and the agricultural sector's premiere event
- Brings together more than 1,500 sector leaders and professionals to connect and discuss current and key emerging issues in agriculture
- More than 30 sessions covering commodity markets and outlook, international trade, agricultural policy, as well as cutting edge topics that will influence the future of agriculture

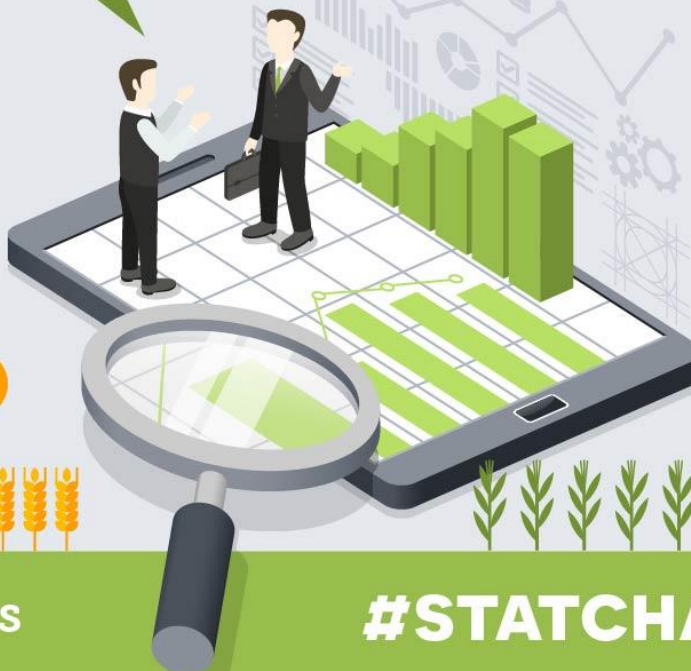




STAT CHAT SERIES

Join @usda_nass on
Twitter using
#StatChat on Friday,
Jan. 10 at 1pm ET to
discuss the **Crop
Production** and
Grain Stocks reports
with Lance Honig.

FRIDAY,
JAN 10
1PM ET



@usda_nass

#STATCHAT



United States Department of Agriculture
National Agricultural Statistics Service

All Reports Available At
www.nass.usda.gov

For Questions
202-720-2127
800-727-9540
nass@usda.gov