

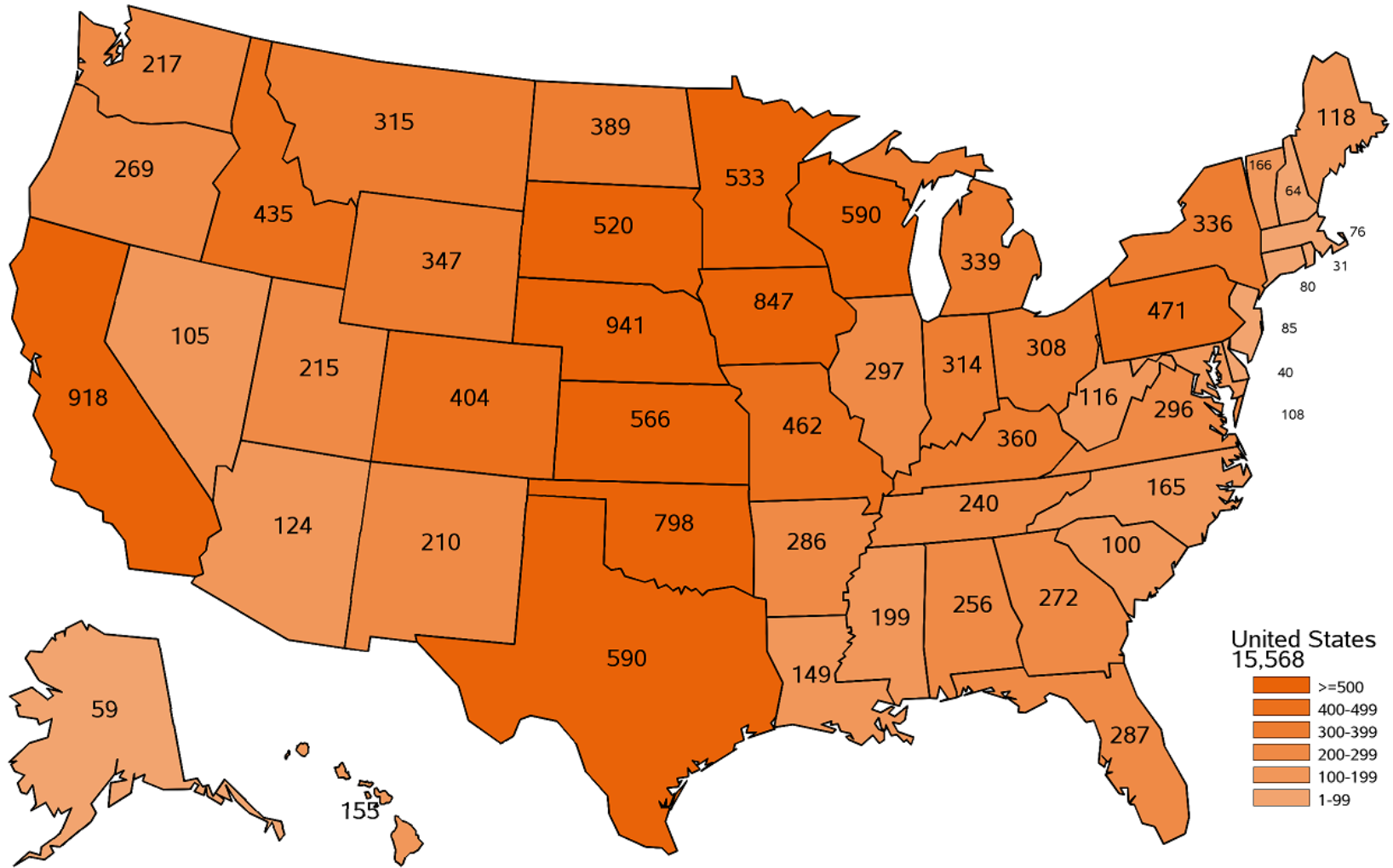


# July Cattle

## Agricultural Statistics Board Briefing

Travis Averill, Chief  
Livestock Branch

# July 2023 Cattle Survey Number of Samples





# U.S. Cattle and Calves Revisions

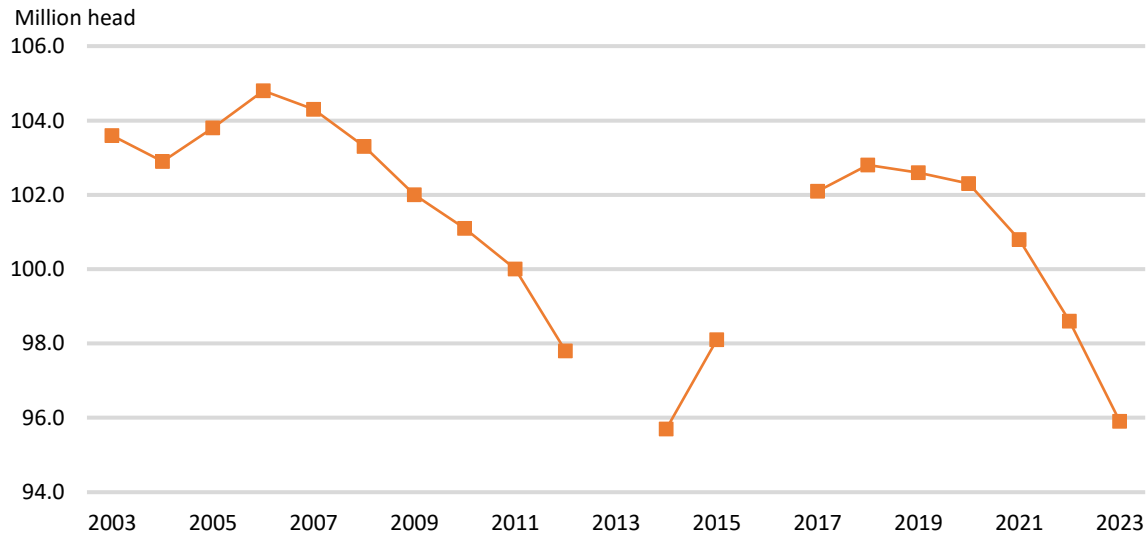


| Survey       | Item                  | Initial Estimate<br>(1,000 head) | Current Revision<br>(1,000 head) | Net Revision<br>(1,000 head) | Current Estimate<br>(1,000 head) |
|--------------|-----------------------|----------------------------------|----------------------------------|------------------------------|----------------------------------|
| July 1, 2022 | All cattle and calves | 98,800.0                         | -                                | -200.0                       | 98,600.0                         |
|              | Calf crop             | 34,600.0                         | -                                | -135.5                       | 34,464.5                         |

# United States July 1 Cattle

|                       | 2022         | 2023   | % Change from Previous Year |     |
|-----------------------|--------------|--------|-----------------------------|-----|
|                       | (1,000 head) |        |                             |     |
| All cattle and calves | 98,600       | 95,900 | ↓                           | 2.7 |

United States All Cattle and Calves July 1



The July 2013 and 2016 Cattle reports were not conducted due to reduced funding.

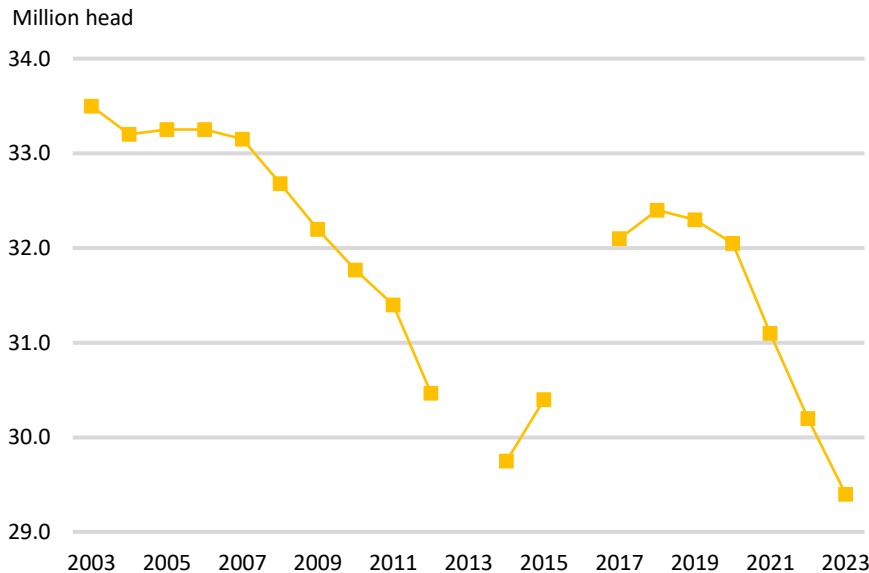


# United States July 1 Cattle

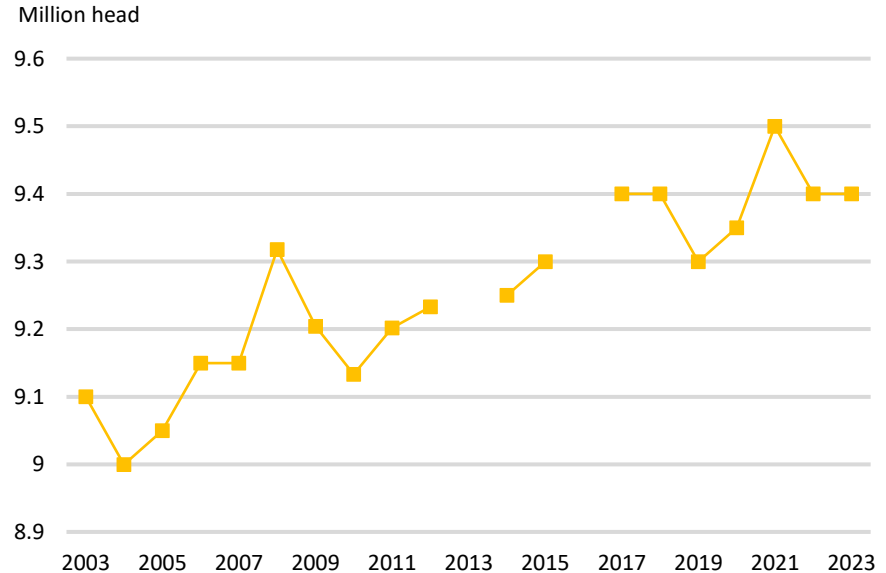


|                                       | 2022<br>(1,000 head) | 2023   | % Change from<br>Previous Year |     |
|---------------------------------------|----------------------|--------|--------------------------------|-----|
| All cows and heifers that have calved | 39,600               | 38,800 | ↓                              | 2.0 |
| Beef cows                             | 30,200               | 29,400 | ↓                              | 2.6 |
| Milk cows                             | 9,400                | 9,400  | -                              | -   |

### United States Beef Cows July 1



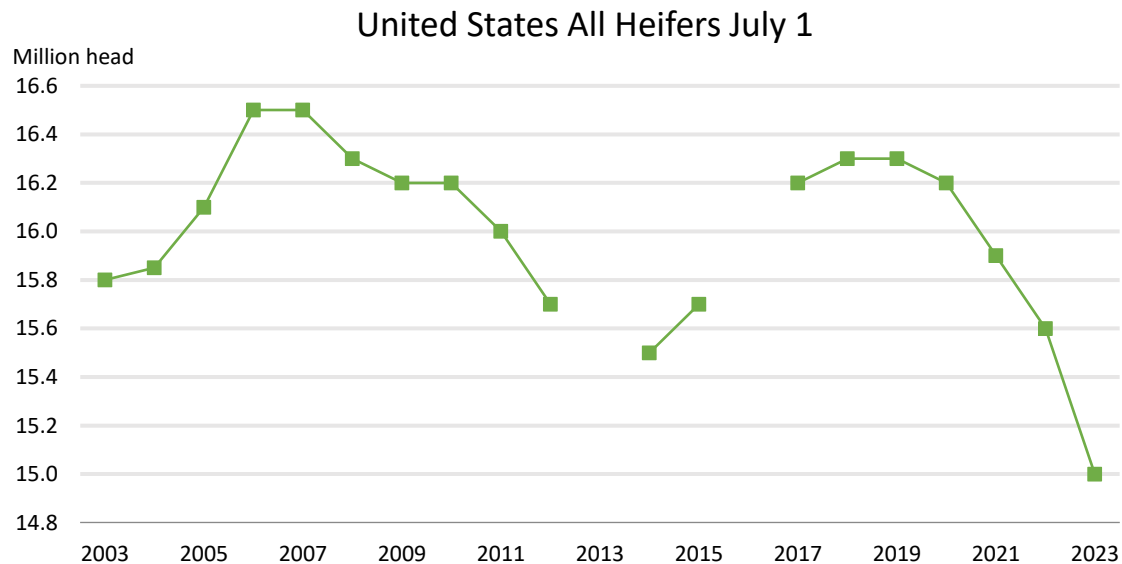
### United States Milk Cows July 1



The July 2013 and 2016 Cattle reports were not conducted due to reduced funding.

# United States July 1 Cattle

|                                 | 2022<br>(1,000 head) | 2023   | % Change from<br>Previous Year |     |
|---------------------------------|----------------------|--------|--------------------------------|-----|
| All heifers 500 pounds and over | 15,600               | 15,000 | ↓                              | 3.8 |
| Beef cow replacement            | 4,150                | 4,050  | ↓                              | 2.4 |
| Milk cow replacement            | 3,750                | 3,650  | ↓                              | 2.7 |
| Other heifers                   | 7,700                | 7,300  | ↓                              | 5.2 |

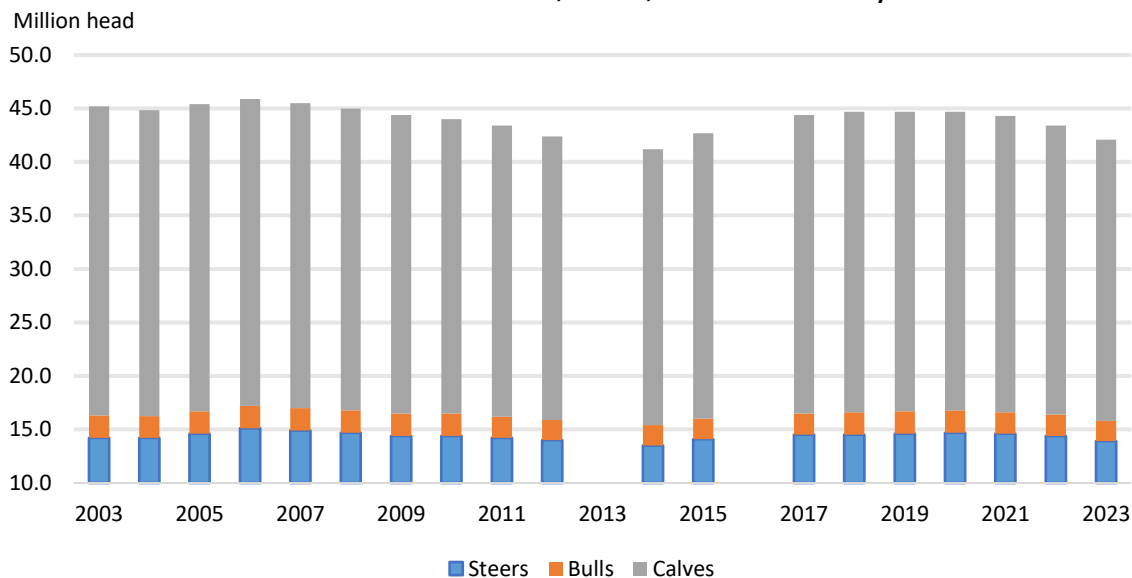


The July 2013 and 2016 Cattle reports were not conducted due to reduced funding.

# United States July 1 Cattle

|                            | 2022<br>(1,000 head) | 2023   | % Change from<br>Previous Year |     |
|----------------------------|----------------------|--------|--------------------------------|-----|
| Steers 500 pounds and over | 14,400               | 13,900 | ↓                              | 3.5 |
| Bulls 500 pounds and over  | 2,000                | 1,900  | ↓                              | 5.0 |
| Calves under 500 pounds    | 27,000               | 26,300 | ↓                              | 2.6 |

United States Steers, Bulls, and Calves July 1



The July 2013 and 2016 Cattle reports were not conducted due to reduced funding.

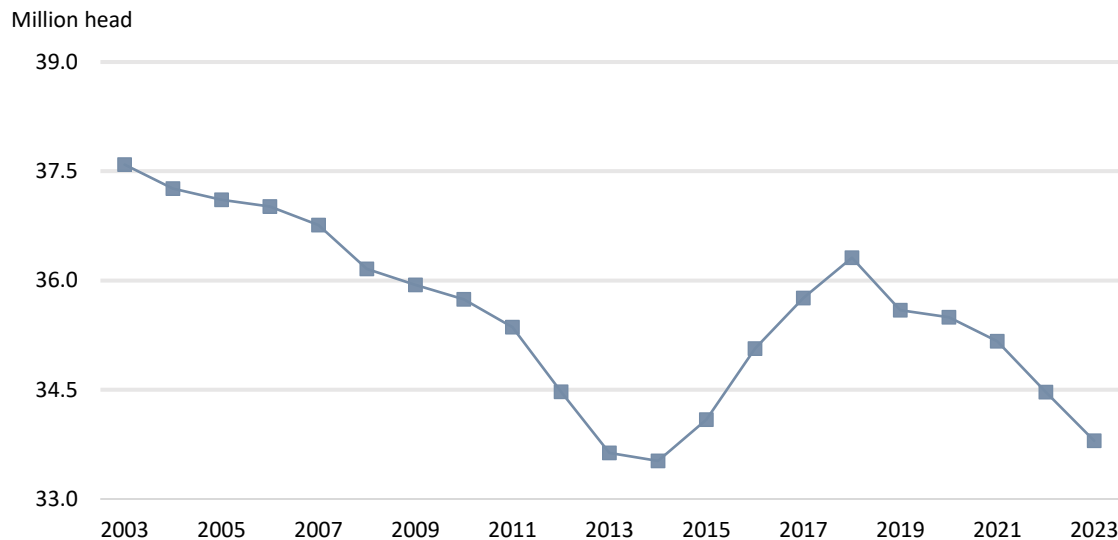


# United States July 1 Cattle



| Calf Crop            | 2022         | 2023     | % Change from Previous Year |     |
|----------------------|--------------|----------|-----------------------------|-----|
|                      | (1,000 head) |          |                             |     |
| January 1 – June 30  | 25,300.0     | 24,800.0 | ↓                           | 2.0 |
| July 1 – December 31 | 9,164.5      | 9,000.0  | ↓                           | 1.8 |
| Total                | 34,464.5     | 33,800.0 | ↓                           | 1.9 |

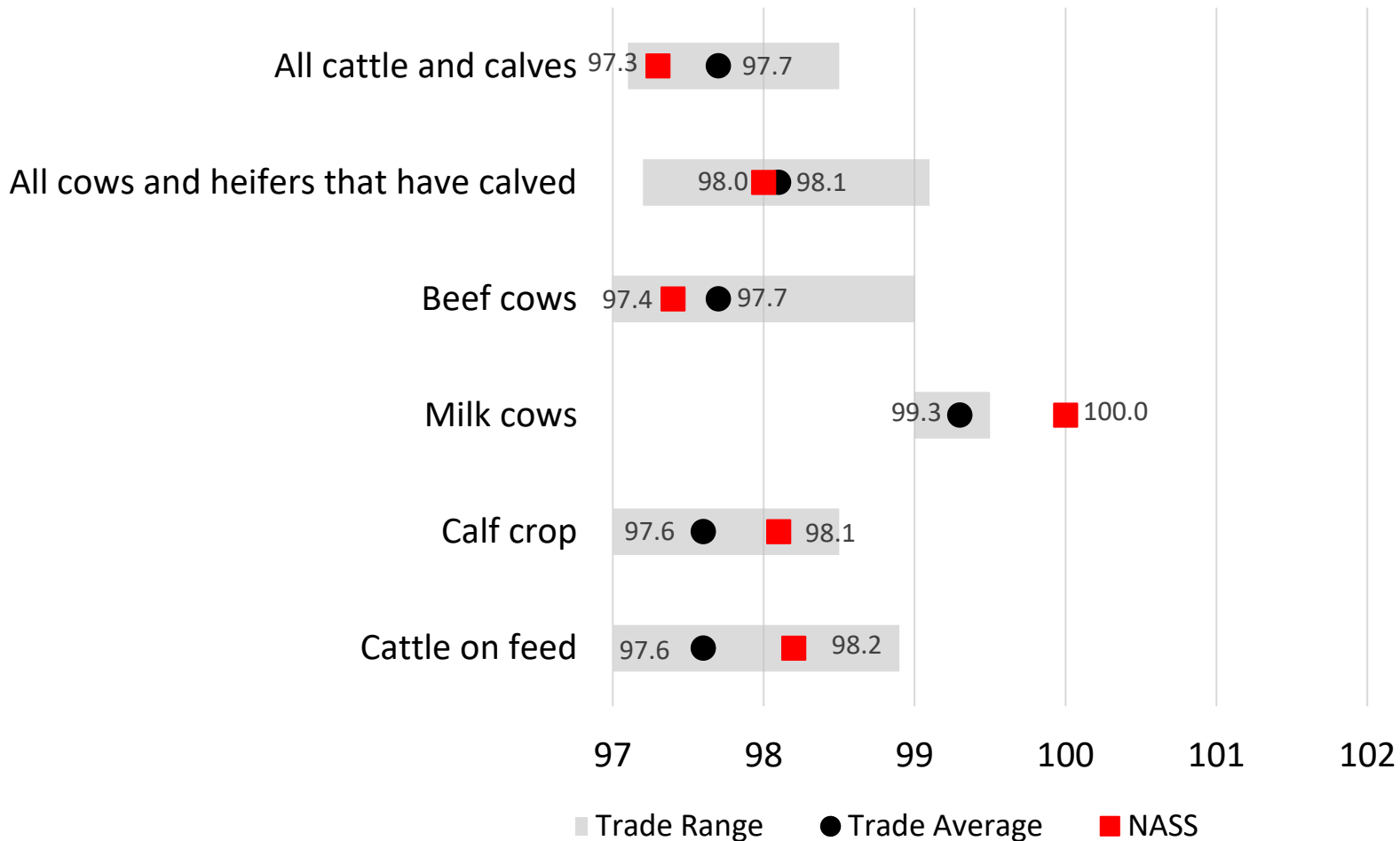
United States Calf Crop







# Trade Expectations Compared to NASS Estimates Percent of Previous Year

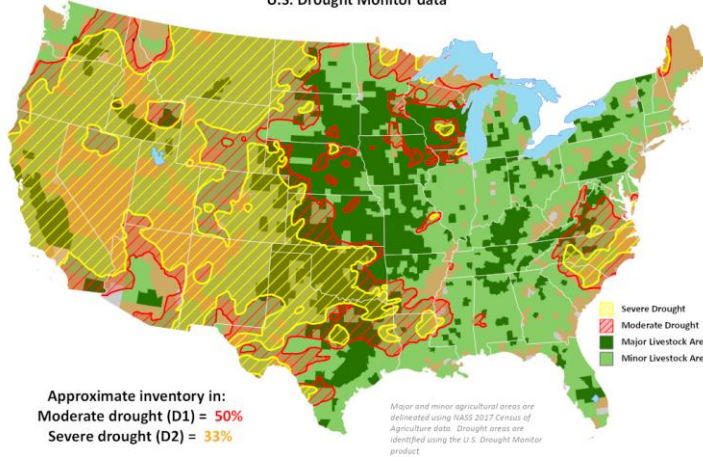


# United States July 1 Cattle Drought Maps

USDA United States Department of Agriculture  
 This product was prepared by the USDA Office of the Chief Economist (OCE) World Agricultural Outlook Board (WAOB)

## Cattle Areas in Drought

Reflects December 28, 2021  
 U.S. Drought Monitor data



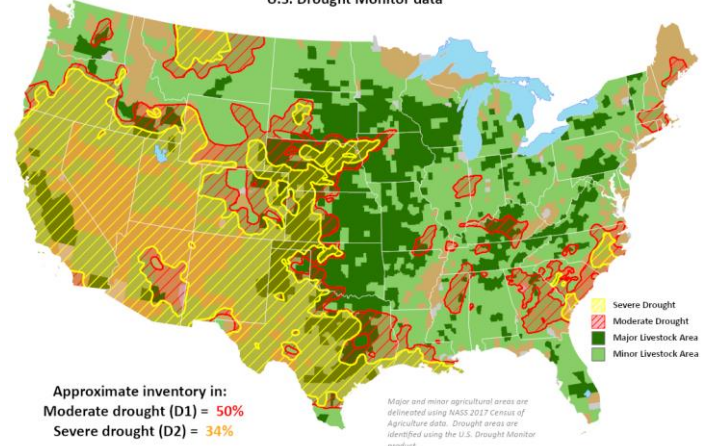
Approximate inventory in:  
 Moderate drought (D1) = 50%  
 Severe drought (D2) = 33%

Major and minor agricultural areas are delineated using NASS 2017 Census of Agriculture data. Drought areas are identified using the U.S. Drought Monitor product.

USDA United States Department of Agriculture  
 This product was prepared by the USDA Office of the Chief Economist (OCE) World Agricultural Outlook Board (WAOB)

## Cattle Areas in Drought

Reflects June 28, 2022  
 U.S. Drought Monitor data



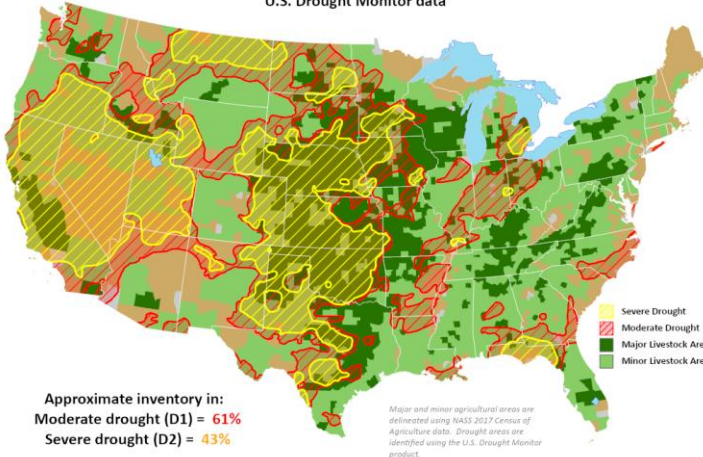
Approximate inventory in:  
 Moderate drought (D1) = 50%  
 Severe drought (D2) = 34%

Major and minor agricultural areas are delineated using NASS 2017 Census of Agriculture data. Drought areas are identified using the U.S. Drought Monitor product.

USDA United States Department of Agriculture  
 This product was prepared by the USDA Office of the Chief Economist (OCE) World Agricultural Outlook Board (WAOB)

## Cattle Areas in Drought

Reflects December 27, 2022  
 U.S. Drought Monitor data



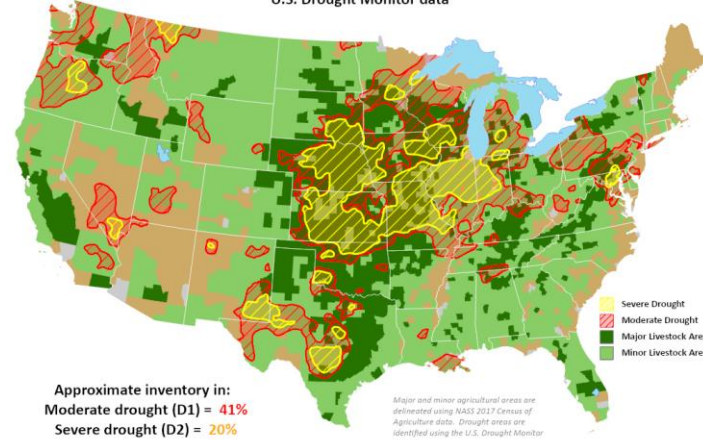
Approximate inventory in:  
 Moderate drought (D1) = 61%  
 Severe drought (D2) = 43%

Major and minor agricultural areas are delineated using NASS 2017 Census of Agriculture data. Drought areas are identified using the U.S. Drought Monitor product.

USDA United States Department of Agriculture  
 This product was prepared by the USDA Office of the Chief Economist (OCE) World Agricultural Outlook Board (WAOB)

## Cattle Areas in Drought

Reflects June 27, 2023  
 U.S. Drought Monitor data



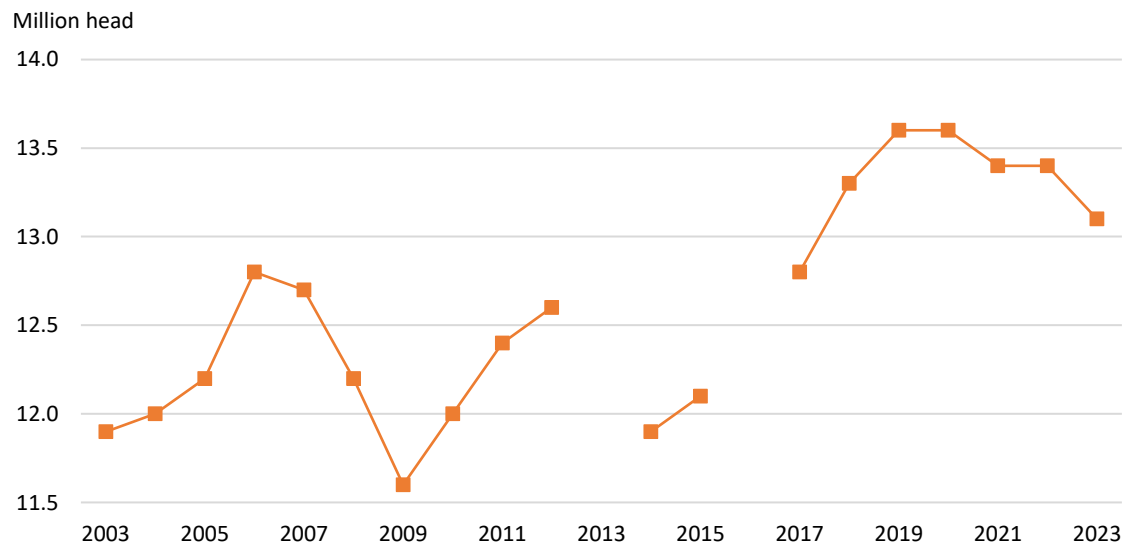
Approximate inventory in:  
 Moderate drought (D1) = 41%  
 Severe drought (D2) = 20%

Major and minor agricultural areas are delineated using NASS 2017 Census of Agriculture data. Drought areas are identified using the U.S. Drought Monitor product.

# United States July 1 Cattle

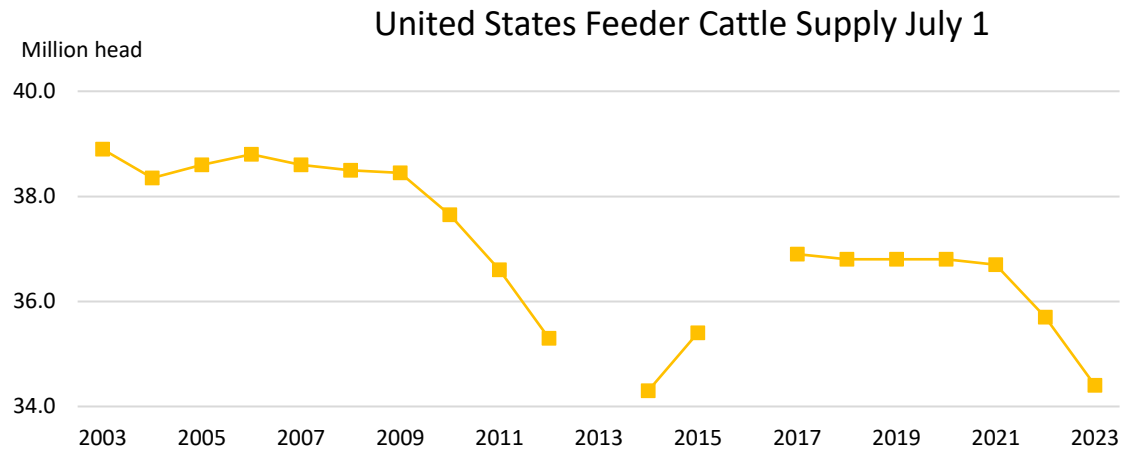
| Cattle on Feed                   | 2022         |                  | 2023         |                  |
|----------------------------------|--------------|------------------|--------------|------------------|
|                                  | (1,000 head) | Percent of Total | (1,000 head) | Percent of Total |
| Capacity of 1,000 head or more   | 11,405       | 85.1             | 11,204       | 85.5             |
| Capacity of less than 1,000 head | 1,995        | 14.9             | 1,896        | 14.5             |
| All cattle on feed               | 13,400       |                  | 13,100       |                  |

United States All Cattle on Feed July 1



The July 2013 and 2016 Cattle reports were not conducted due to reduced funding.

| Feeder Cattle Supply                         | 2022         | 2023   | % Change from Previous Year |     |
|----------------------------------------------|--------------|--------|-----------------------------|-----|
|                                              | (1,000 head) |        |                             |     |
| Calves under 500 pounds                      | 27,000       | 26,300 | ↓                           | 2.6 |
| Steers and other heifers 500 pounds and over | 22,100       | 21,200 | ↓                           | 4.1 |
| Total supply                                 | 49,100       | 47,500 | ↓                           | 3.3 |
| All cattle on feed                           | 13,400       | 13,100 | ↓                           | 2.2 |
| Feeder cattle supply                         | 35,700       | 34,400 | ↓                           | 3.6 |



The July 2013 and 2016 Cattle reports were not conducted due to reduced funding.



# Highlight of Upcoming Reports



|           |                                                                                     |
|-----------|-------------------------------------------------------------------------------------|
| July 28   | Agricultural Prices                                                                 |
| August 1  | Cotton System, Fats & Oils,<br>Flour Milling, Grain Crashings<br>Honey Bee Colonies |
| August 4  | Dairy Products<br>Cash Rents<br>Land Values                                         |
| August 11 | Crop Production                                                                     |
| August 18 | Cattle on Feed                                                                      |

<https://www.nass.usda.gov/Publications/index.php>

## STAT CHAT SERIES

@usda\_nass  
#STATCHAT

Join NASS's Livestock Branch Chief Travis Averill on Twitter using #StatChat to ask questions about the July *Cattle* report.

FRIDAY,  
July 21  
4PM ET





All Reports Available at

[www.nass.usda.gov](http://www.nass.usda.gov)

For Questions

(202) 720-3570

(800) 727-9540

[nass@usda.gov](mailto:nass@usda.gov)