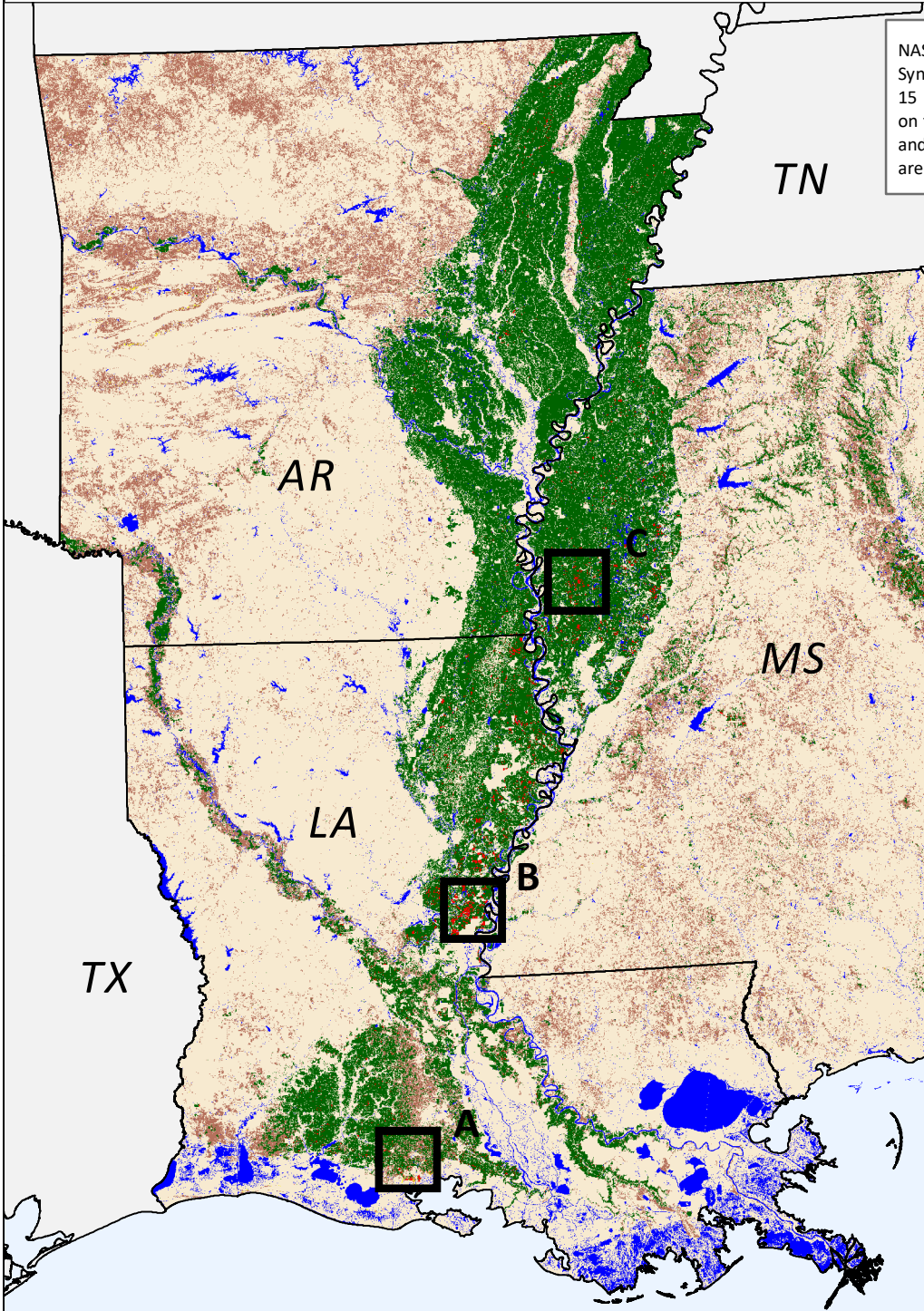
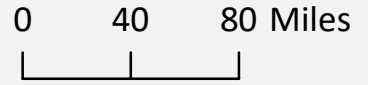


NASS 2020 Inundation Layer created using Sentinel-1A Synthetic Aperture Radar data acquired between August 15 and September 4, 2020. Crop information is based on the USDA NASS 2019 Cultivated Layer (planted acres) and the 2019 Cropland Data Layer (planted acres) and are not official NASS estimates.



Land Cover

- Cropland
- Inundated Cropland
- Pasture/Hay
- Inundated Pasture/Hay
- Other Land
- Water



State	Crop Type	Total Statewide Acres	Percent of Inundated Acres
Arkansas	Corn	770,000	0.16%
	Cotton	620,000	0.00%
	Rice	1,156,000	0.95%
	Soybeans	2,650,000	0.44%
	Aquaculture	-	0.18%
	Pasture/Hay	-	0.21%
Louisiana	Corn	570,000	5.97%
	Cotton	280,000	1.49%
	Rice	425,000	4.89%
	Soybeans	890,000	7.27%
	Sugarcane	469,000	3.74%
	Aquaculture	-	1.94%
Mississippi	Pasture/Hay	-	0.34%
	Corn	660,000	3.07%
	Cotton	710,000	0.00%
	Rice	117,000	0.67%
	Soybeans	1,660,000	2.59%
Aquaculture	-	0.24%	
Pasture/Hay	-	0.18%	

*Based on the USDA NASS 2019 Cultivated Data Layer and the 2019 Cropland Data Layer. These are not official NASS estimates.

