

Hurricane Idalia - August 2023

Assessment Period: August 30-31, 2023

Publication Date: September 14, 2023

USDA NASS

Disaster Monitoring Team



Event Summary

- **Location:** Southeastern United States, including Florida, Georgia, South Carolina, and North Carolina
- **Event:** Hurricane Idalia
 - Category 4 Atlantic hurricane
- **Timeframe:** August 30-31, 2023



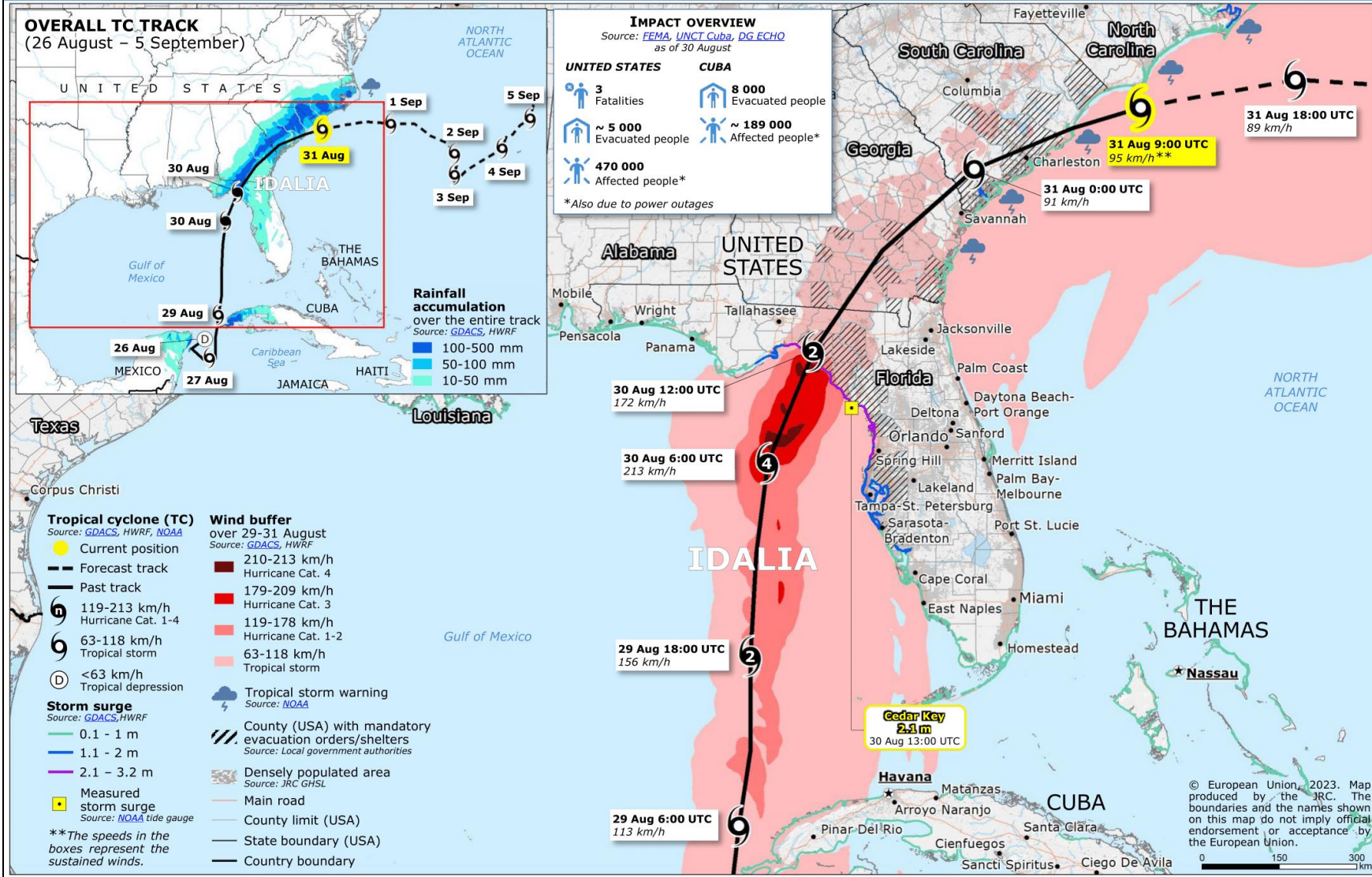
August 30, 2023, NOAA VIIRS



<https://www.gdacs.org/report.aspx?eventid=1001000&episodeid=29&eventtype=TC#:~:text=Tropical%20cyclone%20IDALIA%20made%20landfall,weakening%20as%20a%20tropical%20storm.>



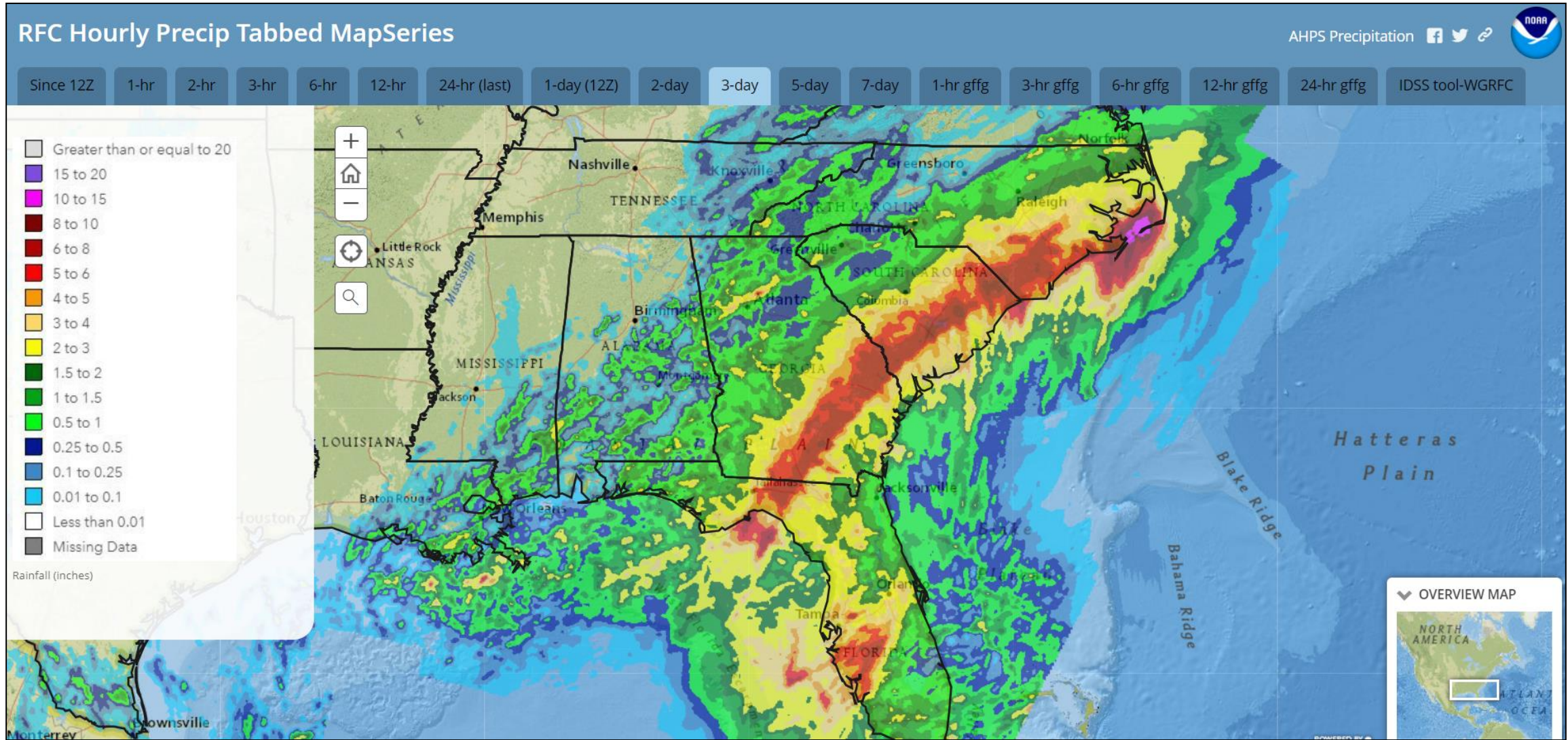
United States, Cuba | Tropical storm IDALIA



<https://www.gdacs.org/report.aspx?eventid=1001000&episodeid=29&eventtype=TC#:~:text=Tropical%20cyclone%20IDALIA%20made%20landfall,weakening%20as%20a%20tropical%20storm.>



Observed 3-Day Precipitation Levels: August 30 – September 1 (2023)



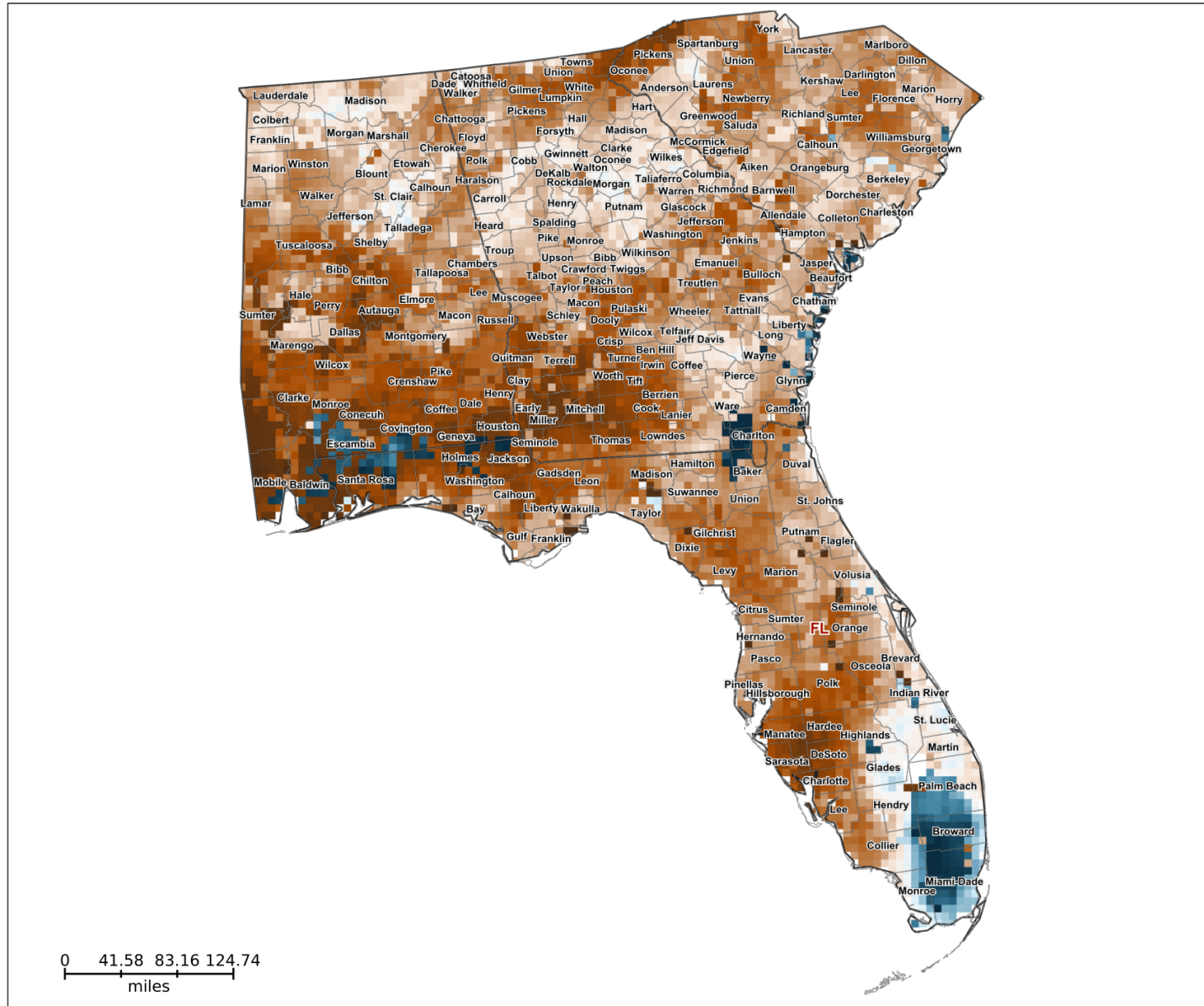
<https://noaa.maps.arcgis.com/apps/MapSeries/index.html?appid=ed433140c2a24b67aa9f19d2e3ea1977>














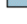



Pre-Event



SMAP Topsoil Anomaly 9km 8/21/23 - 8/27/23



SMAP Legend

-  <-70%
-  -70%~-50%
-  -50%~-40%
-  -40%~-30%
-  -30%~-20%
-  -20%~-10%
-  -10%~0%
-  0%
-  0%~10%
-  10%~20%
-  20%~30%
-  30%~40%
-  40%~50%
-  50%~70%
-  >70%

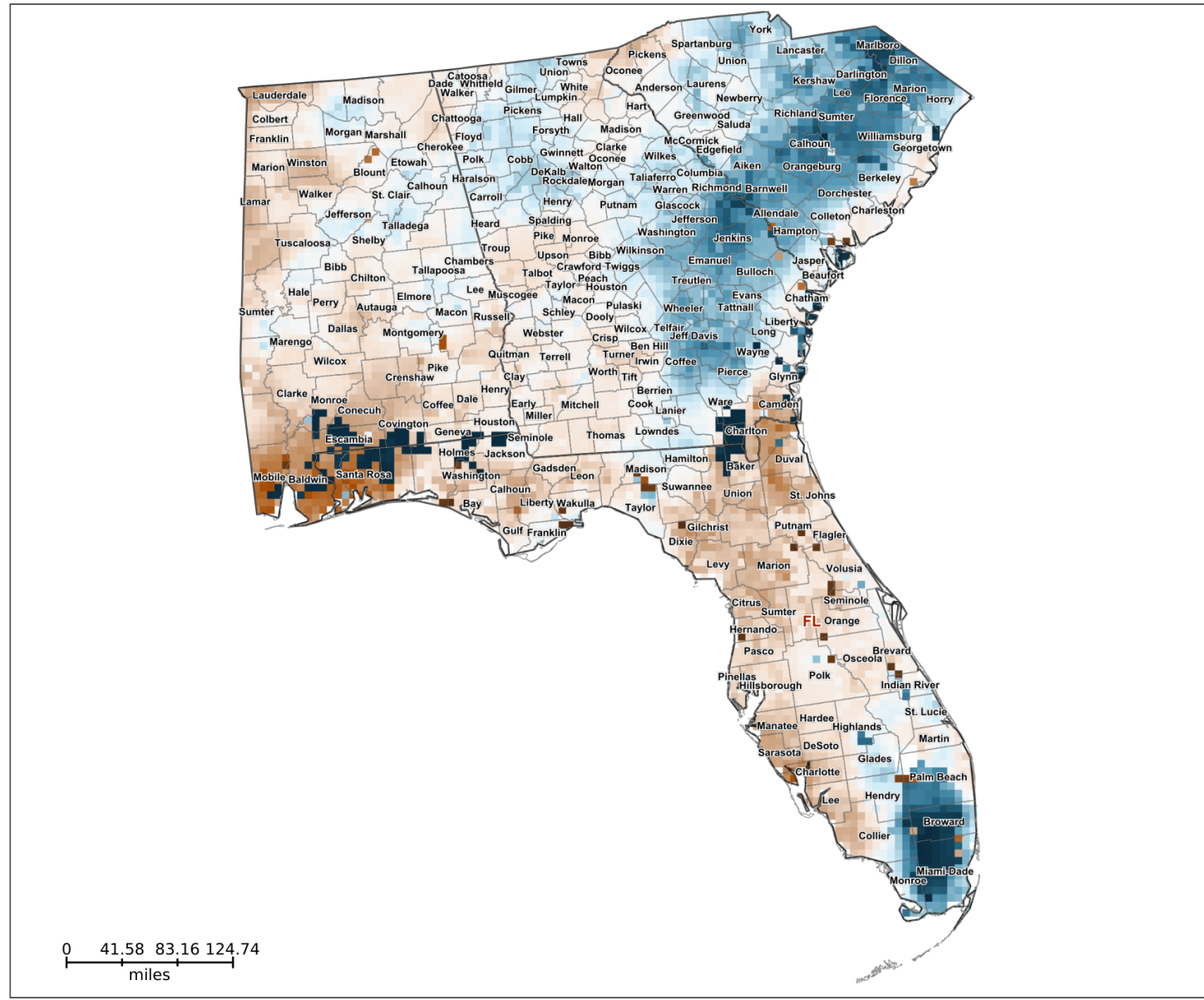
0 41.58 83.16 124.74
miles



Post-Event



SMAP Topsoil Anomaly 9km 8/28/23 - 9/3/23



SMAP Legend

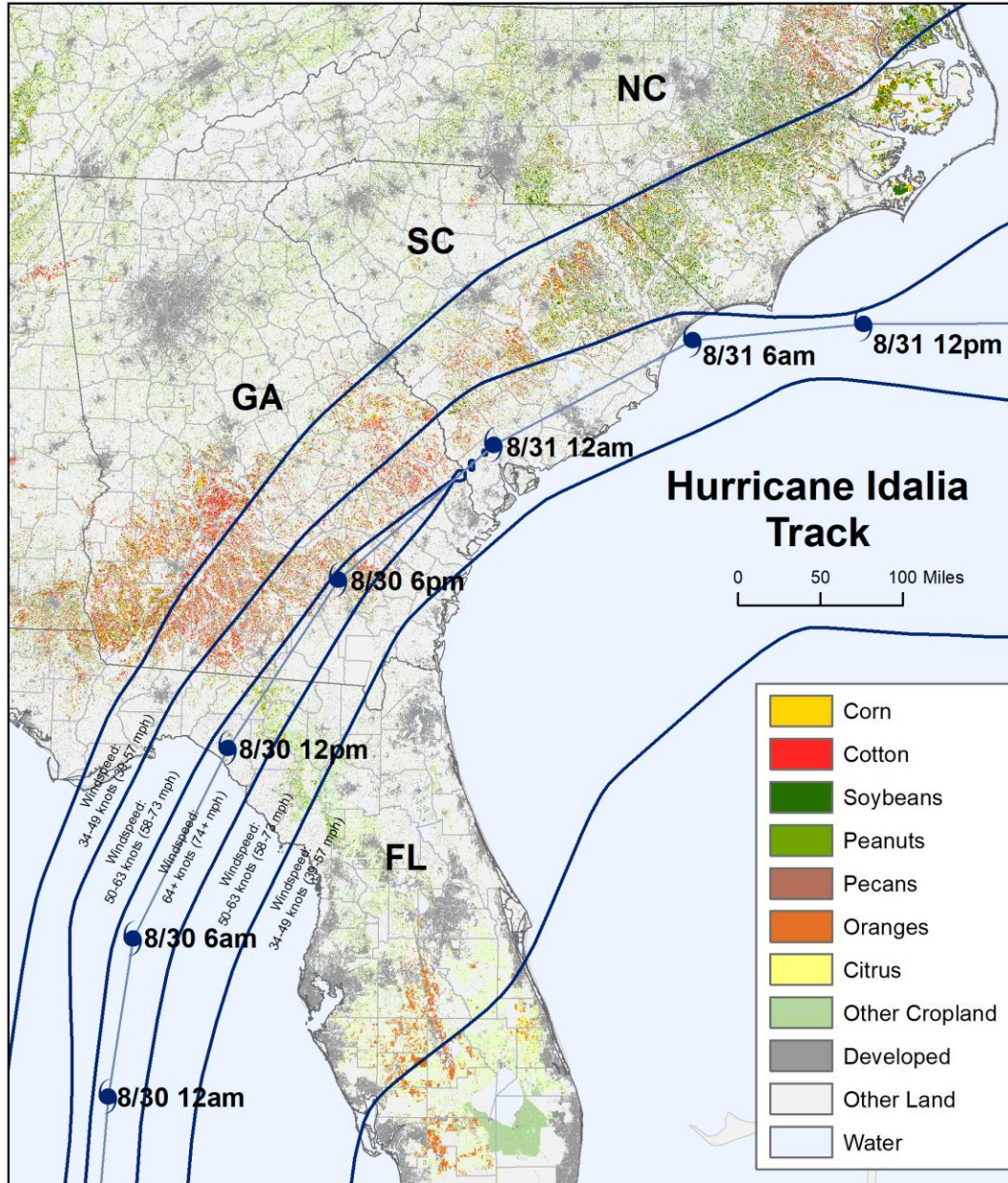
- <-70%
- 70%~-50%
- 50%~-40%
- 40%~-30%
- 30%~-20%
- 20%~-10%
- 10%~0%
- 0%
- 0%~10%
- 10%~20%
- 20%~30%
- 30%~40%
- 40%~50%
- 50%~70%
- >70%

0 41.58 83.16 124.74
miles





U.S. Agriculture Affected by Hurricane Idalia Winds - August 2023



North Carolina				
Crop Type	Statewide Total Acres	Percent within 64+ knots	Percent within 50+ knots (includes 50-63, 64+ knots)	Percent within 34+ knots (includes 34-49, 50-63, 64+ knots)
Corn	830,000	N/A	N/A	56.30%
Cotton	470,000	N/A	N/A	32.33%
Soybeans	1,700,000	N/A	N/A	46.93%
Peanuts	117,000	N/A	N/A	26.13%

South Carolina				
Crop Type	Statewide Total Acres	Percent within 64+ knots	Percent within 50+ knots (includes 50-63, 64+ knots)	Percent within 34+ knots (includes 34-49, 50-63, 64+ knots)
Corn	320,000	0.04%	19.30%	94.36%
Cotton	270,000	0.03%	20.43%	95.48%
Soybeans	405,000	0.01%	13.60%	93.11%
Peanuts	71,000	0.03%	29.45%	99.32%

Georgia				
Crop Type	Statewide Total Acres	Percent within 64+ knots	Percent within 50+ knots (includes 50-63, 64+ knots)	Percent within 34+ knots (includes 34-49, 50-63, 64+ knots)
Corn	425,000	4.42%	23.63%	50.17%
Cotton	1,290,000	4.36%	27.46%	60.90%
Soybeans	165,000	3.76%	19.07%	39.92%
Peanuts	685,000	4.59%	27.44%	58.04%
Pecans	147,000	2.52%	16.58%	40.22%

Florida				
Crop Type	Statewide Total Acres	Percent within 64+ knots	Percent within 50+ knots (includes 50-63, 64+ knots)	Percent within 34+ knots (includes 34-49, 50-63, 64+ knots)
Corn	85,000	28.14%	60.79%	69.97%
Cotton	106,000	1.87%	5.92%	8.68%
Peanuts	150,000	16.42%	34.80%	47.13%
Oranges	317,100	0.00%	0.00%	52.39%
Citrus	23,100	0.00%	0.00%	18.11%

Total statewide acres based on 2022 NASS official estimates for planted acres for corn, cotton, soybeans, and peanuts, and bearing acres for pecans, oranges, and citrus (not including oranges).

Percentages based on raw pixel counts from the 2022 Cropland Data Layer and are not official NASS estimates. Hurricane wind swath data obtained from NOAA National Hurricane Center.



Ground Photos: Reported Crop Damage (GA, FL)



Dixie, GA: Heavy damage to pecan orchards near the GA-FL border.

Photo Source: Special to AIC

Media Source: [Downed trees, twisted cotton: Georgia farms hit hard by Idalia](#)



Jennings, FL: Several hundred acres of eggplants and peppers lost by one grower.

Photo Source: De Broughton

Media Source: [Idalia hit Florida, Georgia agriculture](#)