

F·a·r·m F·u·n
in New Jersey



**USDA's National Agricultural Statistics Service
New Jersey Field Office – Troy Joshua, Director**

P.O. Box 330

Trenton, NJ 08625

Phone: (800) 328-0179 E-mail: nass-nj@nass.usda.gov

Access our reports via the Internet: www.nass.usda.gov/nj/

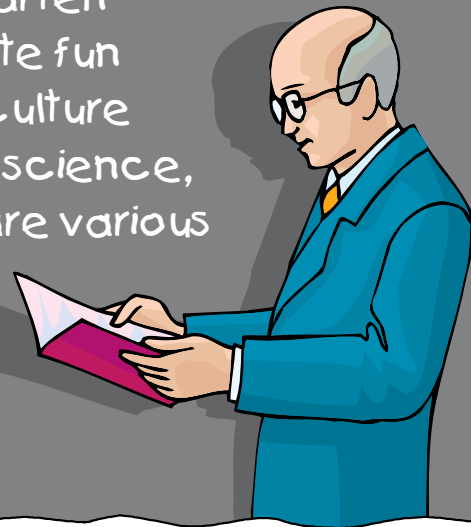


Free Educational Materials on the Internet

Note to Parents and Teachers: Our Agency offers a link on our Homepage geared toward children, called 'NASS Kids...Agriculture and Math Fun!' This site has agriculture-related word games, puzzles, jokes, quizzes, glossary, charts, and a coloring book. Also, you can find links to other agriculture-related sites, including Ag for Teachers!

Ag for Teachers

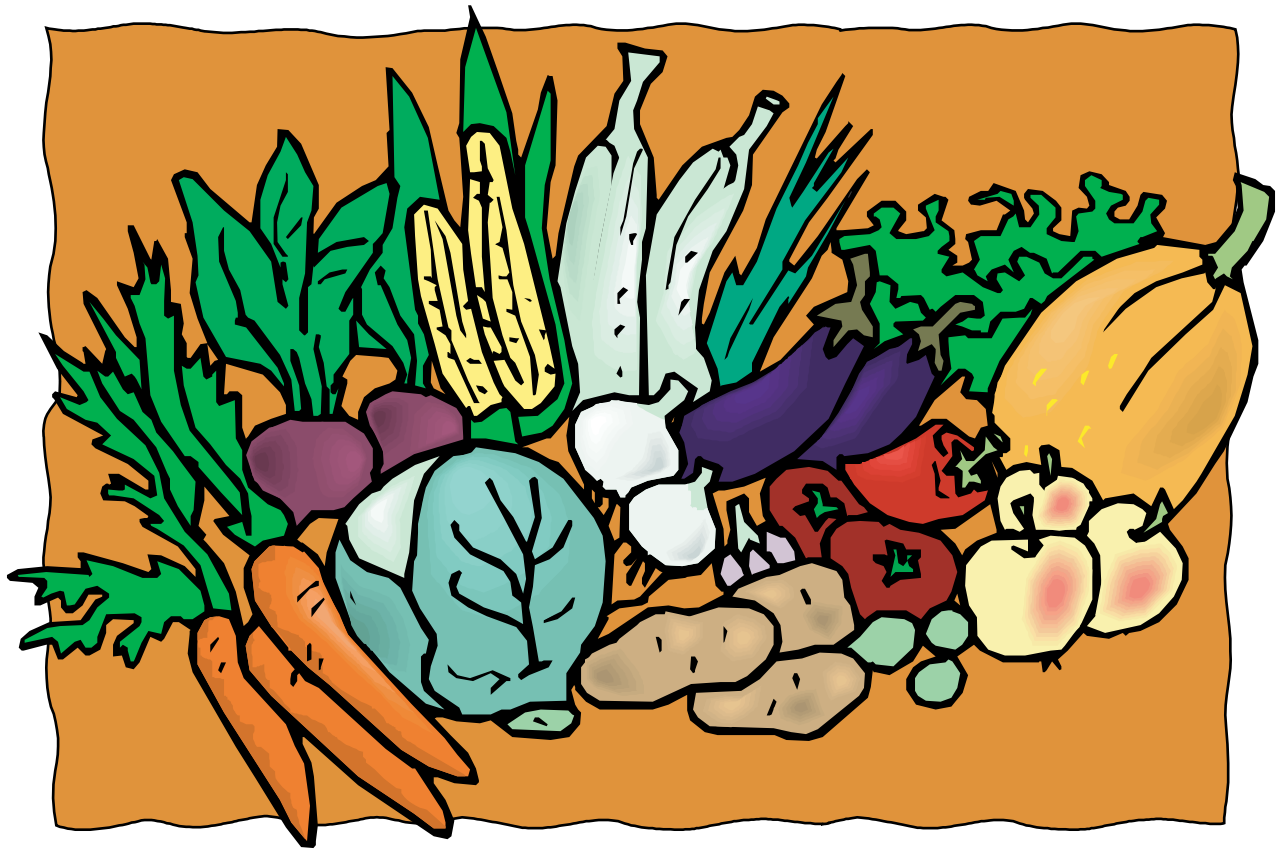
'Ag for Teachers' includes Agriculture Counts Lesson Plans, new for 2008. The lessons are structured for grades kindergarten through 12. The goal is to create fun lessons that incorporate agriculture into English, math, geography, science, and social studies. Featured are various lesson plans, classroom activities, and learning tools based on agriculture, math and computer science.



How can I get more copies of this activity book?

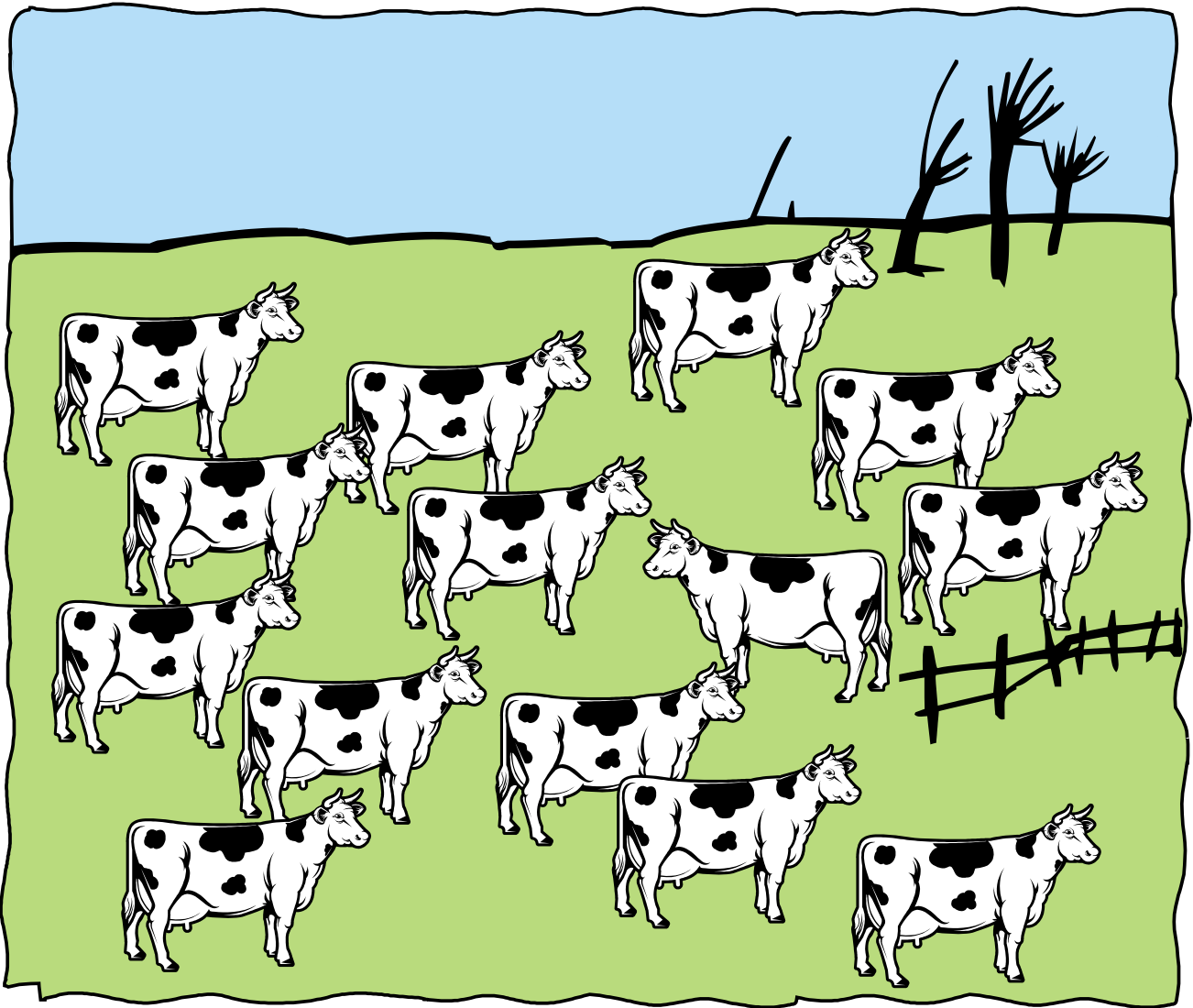
Due to budget limitations, multiple copies of this Activity Book are not available from the New Jersey Agricultural Statistics Service. The book is NOT copyrighted and you are welcome to make copies as needed. It is also available from our website at www.nass.usda.gov/nj/ where you can print selected pages or the entire book.

New Jersey Agriculture



What do you think of when you hear the word “agriculture”? The image of crops growing in a field or a barnyard full of animals may come to mind. But even if you don’t live on a farm, agriculture is all around you. By playing the games and coloring the pictures in this book you will learn about crops and animals produced in New Jersey.

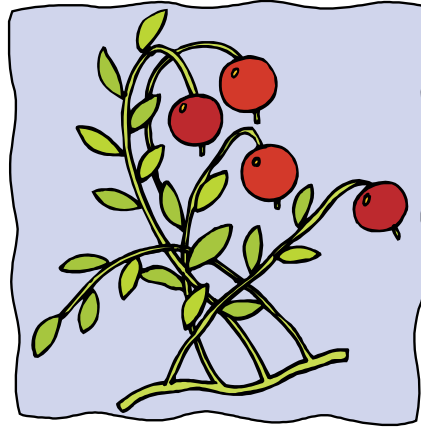
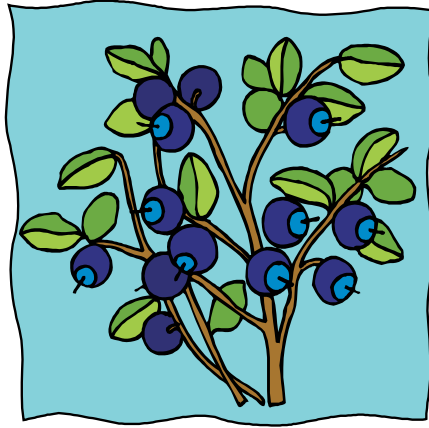
Got Milk?



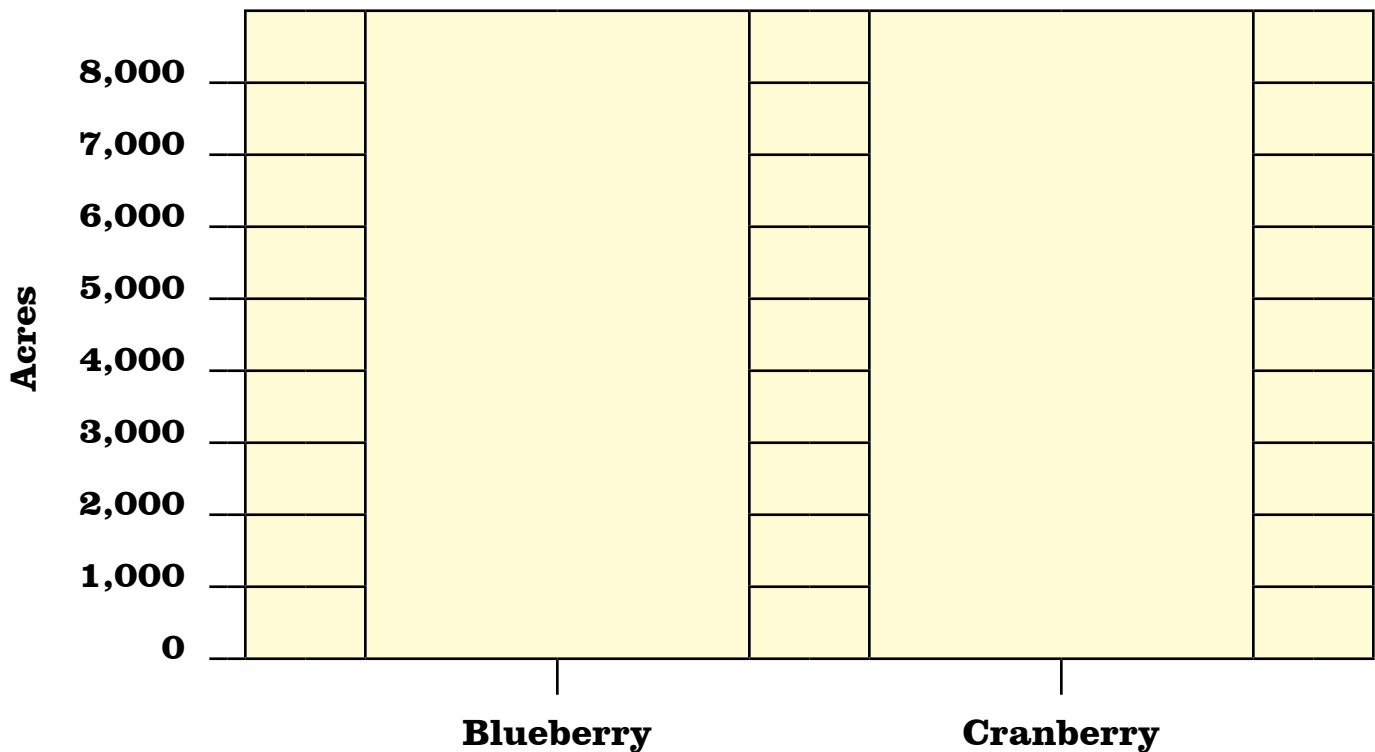
Which milk cow is different?

New Jersey dairy farms produced about 169 million pounds of milk in 2007. There were 190 farm operations with one or more milk cows in 2007. The value of milk produced by farmers totaled \$32,928,000 in 2007.

Make a Graph!



New Jersey Blueberry & Cranberry Acres Harvested



Make a bar chart showing the acres of blueberries and cranberries harvested in New Jersey. Color the blueberry bar blue and the cranberry bar red. There are about 7,600 acres of blueberries and 3,100 acres of cranberries harvested each year.

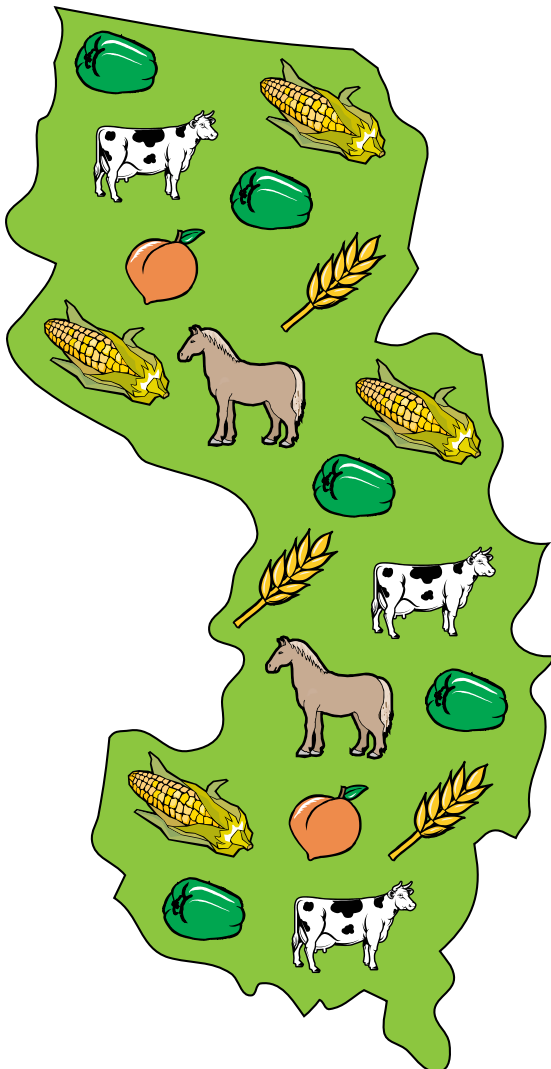
Taking a Survey

One, two, three, four!

You are counting. A **Survey** is a count.

The New Jersey Agricultural Statistics Service counts livestock (cows, pigs, sheep, chickens), and crops (corn, oats, wheat, hay, soybeans, potatoes, fruits, vegetables).

We need counts of livestock and crops. A survey answers big questions.



Can you count the animals and crops on the map?

Livestock

How many cows do you see? _____

How many horses do you see? _____

Crops

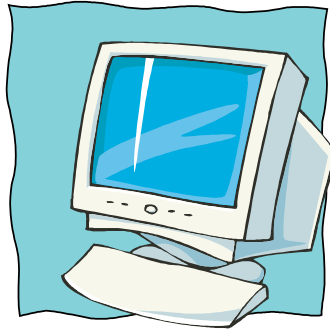
How many ears of corn do you see? _____

How many peaches do you see? _____

How many peppers do you see? _____

How many heads of wheat do you see? _____

Computer Kool



Statisticians use computers every day in their work. Can you find the following words in the word find puzzle above? Circle each word that you are able to find. Words may be found forward and backward (horizontally, vertically, and diagonally).

V K W N V I H S O T N I C A M
O R A B C F U R P S Y P S S O
S O E J O U T P U T X O O W T
P W F U M O U S E M W F O M H
T T L S P I O W A Q T K A O E
Q E O Z U X E R T W M O T U R
I N P U T A G S A X Y A S S B
E A P A E O T R E R P U N E O
X Y Y Y R T E U O A O N I P A
M O R P A C N E X Y P R I A R
K E Y B O A R D I I A E S D D
L I M P O N E O U O O D E S B
S E P R I N T I N G Y L N U S
T J P I O Q N E P Z X O W M U
E R S N O C I N T E R F A C E

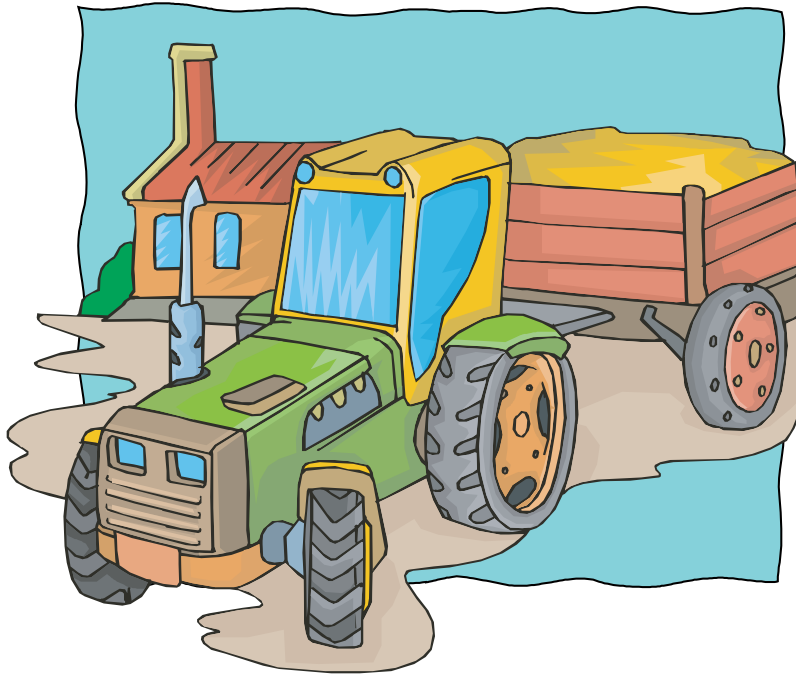
COMPUTER
PROGRAM
INPUT
MACINTOSH

SOFTWARE
OUTPUT
KEYBOARD
MOUSE

INTERNET
PRINTING
MOTHERBOARD
MOUSEPAD

FOLDER
NETWORK
INTERFACE
ICON

Farm Scramble



**Hey kids! Unscramble the words below to reveal a farm word.
The clues will help you!**

- rpcso** → What's grown in the fields? _____
- anrb** → What do the animals sleep in? _____
- sipg** → Pink, round little things. _____
- eeefn** → How do you keep the animals in the pasture? _____
- nyobsea** → Type of round bean _____
- osreh** → What rhymes with course? _____
- amrfer** → Who takes care of the animals? _____
- actortr** → What do farmers ride that pulls a plow in fields? _____
- ronc** → Yellow things you eat (good with salt and butter). _____
- taewh** → Grain - rhymes with sheet. _____

Color the Vegetables Grown in New Jersey



Count the Flowers

New Jersey farmers produce a lot of flowers, bushes, trees, and sod. In fact this is the largest group of crops grown in New Jersey. Greenhouse, nursery, sod, and Christmas tree producers had sales in 2006 of 390 million dollars.



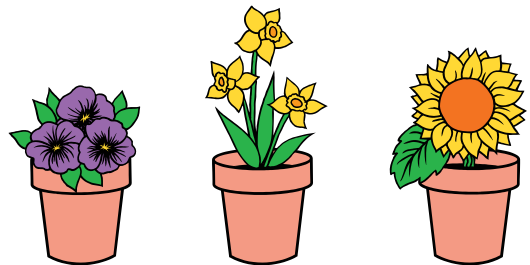
Count the Flowers

How many pansies? _____

How many daffodils? _____

How many sunflowers? _____

Key

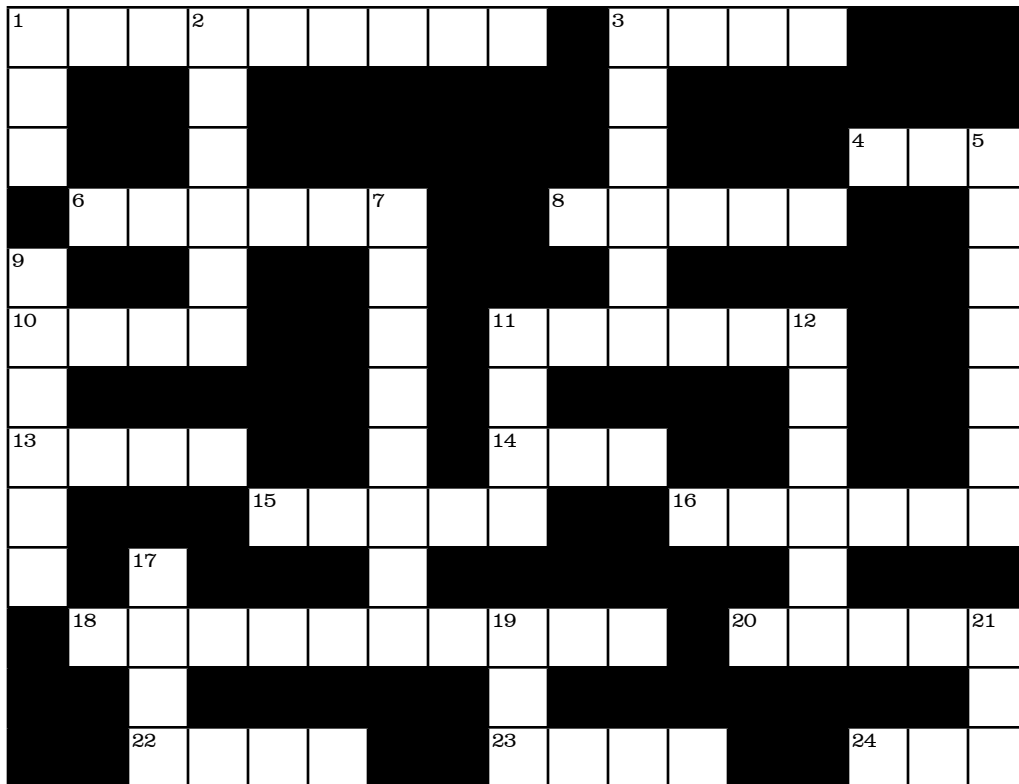


Pansies

Daffodils

Sunflowers

Agricultural Crossword Puzzle



ACROSS

1. Oleo ____ comes from corn and soybeans.
3. A baby cow or bull.
4. Where milk comes from.
6. Red fruit that grows on trees.
8. A freshwater fish in the salmon family.
10. A small grain popular for its use in cereal.
11. Cows and bulls on a farm or ranch. oil, flour and meal.
13. 43,560 square feet.
14. ____ bread.
15. A single small hard seed.
16. A cow that has not had a calf yet.
18. A product used with pancakes, waffles, etc (2 words)
20. Baked ____.
22. A male cattle.
23. A female horse.
24. A spout that is inserted into a maple tree.

DOWN

1. The sound a cow makes.
2. A purple or green fruit that grows on a vine in clusters.
3. Bugs Bunny's favorite food.
5. Rain, snow, sunshine, sleet, etc.
7. A legume whose seeds are used to make oil, flour and meal.
9. A spud.
11. ____ on the cob.
12. Horse.
17. Mary had a little ____.
19. Ewe's mate.
21. Maple syrup is made from ____.

Kids Jokes

Q: What's a cow's favorite vegetable?

A: A cowat!

Q: Why did the unwashed chicken cross the road twice?

A: Because he was a dirty double crosser!

Q: What do you call the story of The Three Little Pigs?

A: A pigtail!

Q: What did the farmer call the cow that would not give him any milk?

A: An udder failure!

Q: How do you take a pig to the hospital?

A: By hambulance!

Q: Why did the baby turkey bolt down his food?

A: Because he was a little gobbler!

Q: Why did the rooster cross the road?

A: To cockadoodle dooo something!

Q: What did the well mannered sheep say to his friend at the field gate?

A: After ewe!

Q: What game do cows play at parties?

A: Moosical chairs!

Q: What do you get if you cross a chicken with a cement mixer?

A: A brick-layer!

Q: How did the farmer find his lost cow?

A: He tractor down!

Q: What do you give a pony with a cold?

A: Cough Stirrup!

Q: Why did the farmer call his pig 'Ink'?

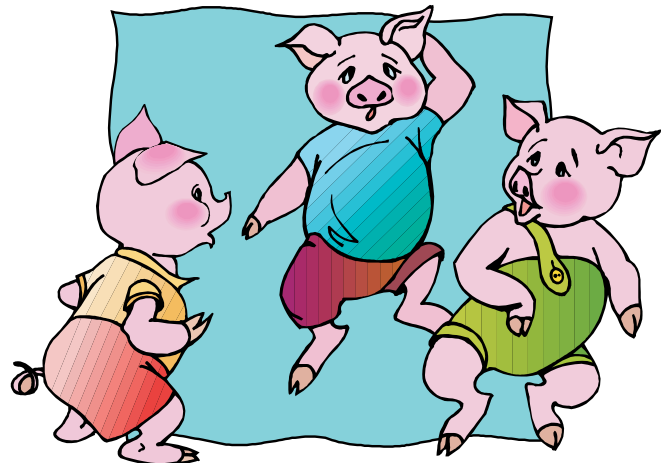
A: Because he kept running out of the pen!

Q: How do chickens dance?

A: Chick to chick!

Q: Why did the chicken cross the playground?

A: To get to the other slide!



Matching

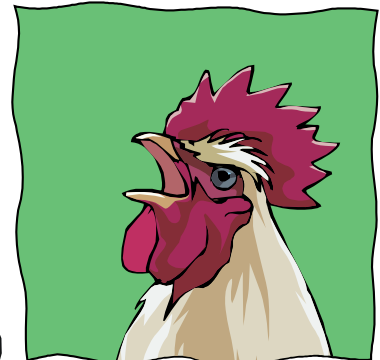
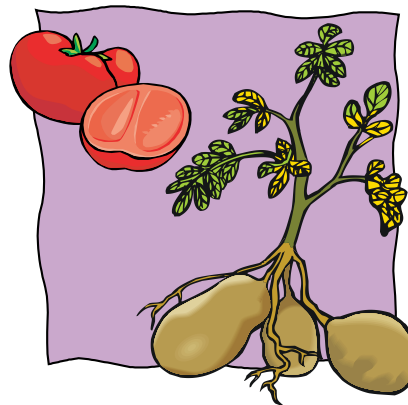
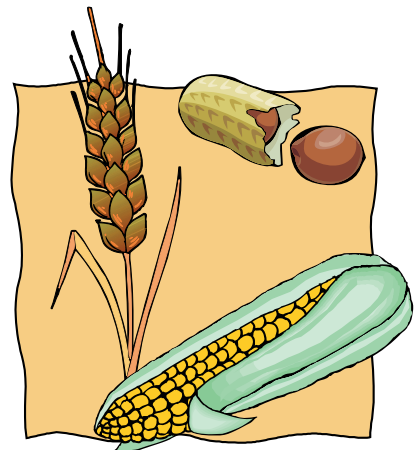
Match the products in column 1 with the animal or crop they came from in column 2. The items in column 2 may be used more than once.

Column 1

1. bacon _____
2. milk _____
3. spaghetti sauce _____
4. egg _____
5. corn meal _____
6. peanut butter _____
7. pork chops _____
8. flour _____
9. beef _____
10. cider _____
11. wool sweaters _____
12. french fries _____
13. jelly _____
14. McNuggets _____
15. ketchup _____
16. noodles _____
17. hamburger _____
18. tater tots _____
19. drumstick _____
20. chips _____

Column 2

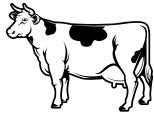
- a. chicken
- b. cow
- c. pig
- d. corn
- e. apples
- f. wheat
- g. grapes
- h. potatoes
- i. sheep
- j. peanuts
- k. tomatoes



Answer Key

> GOT MILK

Which milk cow is different?



> TAKING A SURVEY

Livestock

Number of cows 3
Number of horses 2

Crops

Number of ears of corn 4
Number of peaches 2
Number of peppers 5
Number of wheat 3

> FARM SCRAMBLE

- crops
- barn
- pigs
- fence
- soybean
- horse
- farmer
- tractor
- corn
- wheat

> COUNT THE FLOWERS

How many pansies? 7
How many daffodils? 4
How many sunflowers? 5

> MATCHING

- | | |
|-------|-------|
| 1. C | 11. I |
| 2. B | 12. H |
| 3. K | 13. G |
| 4. A | 14. A |
| 5. D | 15. K |
| 6. J | 16. F |
| 7. C | 17. B |
| 8. F | 18. H |
| 9. B | 19. A |
| 10. E | 20. H |

> COMPUTER KOOL

V	K	W	N	V	I	H	S	O	T	N	I	C	A	M
O	R	A	B	C	F	U	R	P	S	Y	P	S	S	O
S	O	E	J	O	U	T	P	U	T	X	O	O	W	T
P	W	F	U	M	O	U	S	E	M	W	F	O	M	H
T	T	L	S	P	I	O	W	A	Q	T	K	A	O	E
Q	E	O	Z	U	X	E	R	T	W	M	O	T	U	R
I	N	P	U	T	A	G	S	A	X	Y	A	S	S	B
E	A	P	A	E	O	T	R	E	R	P	U	N	E	O
X	Y	Y	Y	R	T	E	U	O	A	O	N	I	P	A
M	O	R	P	A	C	N	E	X	Y	P	R	I	A	R
K	E	Y	B	O	A	R	D	I	I	A	E	S	D	D
L	I	M	P	O	N	E	O	U	O	O	D	E	S	B
S	E	P	R	I	N	T	I	N	G	Y	L	N	U	S
T	J	P	I	O	Q	N	E	P	Z	X	O	W	M	U
E	R	S	N	O	C	I	N	T	E	R	F	A	C	E

> AGRICULTURAL CROSSWORD PUZZLE

1	M	A	R	2	G	A	R	I	N	E	3	C	A	L	F																
	O			R								A																			
	O			A								R		4	C	O	5	W													
		6	A	P	P	L	E	7	S			8	T	R	O	U	T		E												
9	P											O							A												
10	O	A	T	S						Y		11	C	A	T	T	L	12	E		T										
	T									B		O							Q		H										
13	A	C	R	E						E		14	R	Y	E				U		E										
	T									15	G	R	A	I	N				16	H	E	I	F	E	R						
	O									17	L									N											
										18	M	A	P	L	E	S	19	R	U	P		20	B	E	A	N	21	S			
											M									A								A			
											22	B	U	L	L					23	M	A	R	E				24	T	A	P



**USDA's National Agricultural Statistics Service
New Jersey Field Office – Troy Joshua, Director**

P.O. Box 330

Trenton, NJ 08625

Phone: (800) 328-0179 E-mail: nass-nj@nass.usda.gov

Access our reports via the Internet: www.nass.usda.gov/nj/



NASS offers a Kid's Page on the Internet

Please visit the NASS Kids Page for more puzzles, games and fun things to do!

NASS Kids Page

www.nass.usda.gov/Education_and_Outreach/NASS_Kids/index.html

Ag for Teachers

www.nass.usda.gov/Education_and_Outreach/Lesson_Plans/index.asp

Other sites:

New Jersey Agricultural Statistics Service

www.nass.usda.gov/nj

National Agricultural Statistics Service (NASS)

www.nass.usda.gov

New Jersey Department of Agriculture (NJDA)

www.state.nj.us/agriculture

United States Department of Agriculture (USDA)

www.usda.gov



**USDA's National Agricultural Statistics Service
New Jersey Field Office – Troy Joshua, Director**

P.O. Box 330

Trenton, NJ 08625

Phone: (800) 328-0179 E-mail: nass-nj@nass.usda.gov

Access our reports via the Internet: www.nass.usda.gov/nj/



Boys and Girls!

We hope you enjoyed playing the games and coloring the pictures in this booklet. We are grateful to our New Jersey farmers and their families for the food they provide and the wholesome milk and juices that we drink.

We are also grateful to them for completing our surveys throughout the year. This is how we gather our data about agriculture. A lot of people and agencies learn from this data, like - - -

-  the farmers themselves
-  magazines, newspapers and radio
-  farm businesses
-  farm associations
-  banks and lenders
-  schools and universities
-  farm cooperatives
-  government agencies
-  legislatures

We hope you have become more aware of agriculture in New Jersey and learned how important it is to the people who work hard to produce our food.

