



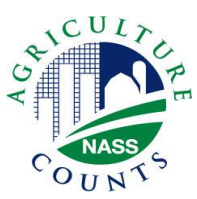
United States Department of Agriculture
National Agricultural Statistics Service



JULY CROP PRODUCTION
Executive Summary

JULY 11, 2012

8:30 AM



Contents



Field Crops	Fruit	Specialty Crops
Winter Wheat	Citrus	Tobacco
Other Spring Wheat	Apricots	Potatoes
Durum Wheat	Almonds	Lentils
Barley		Dry Edible Peas
Oats		Austrian Winter Peas



Survey Overview

	Ag Yield	Objective Yield
Survey Type	Farmer Reported	Field Measurement
Crops Included	Winter, Spring & Durum Wheat, Oats, Barley, Tobacco	Winter Wheat
States	35	10
Sample Size	~8,900	1,410
Collection Period	June 29 – July 6	June 24 – July 1



July 2012 Crop Production

Crop	Unit	July 2012	% Change from Previous Forecast	% Change from Previous Season
Winter Wheat				
Harvested	Mil Ac	35.0	* NC	+ 8.4
Yield	Bu/Ac	47.7	+ 0.8	+ 3.2
Production	Bil Bu	1.67	- 0.8	+ 11.8

* No change from June Acreage



July 2012 Crop Production

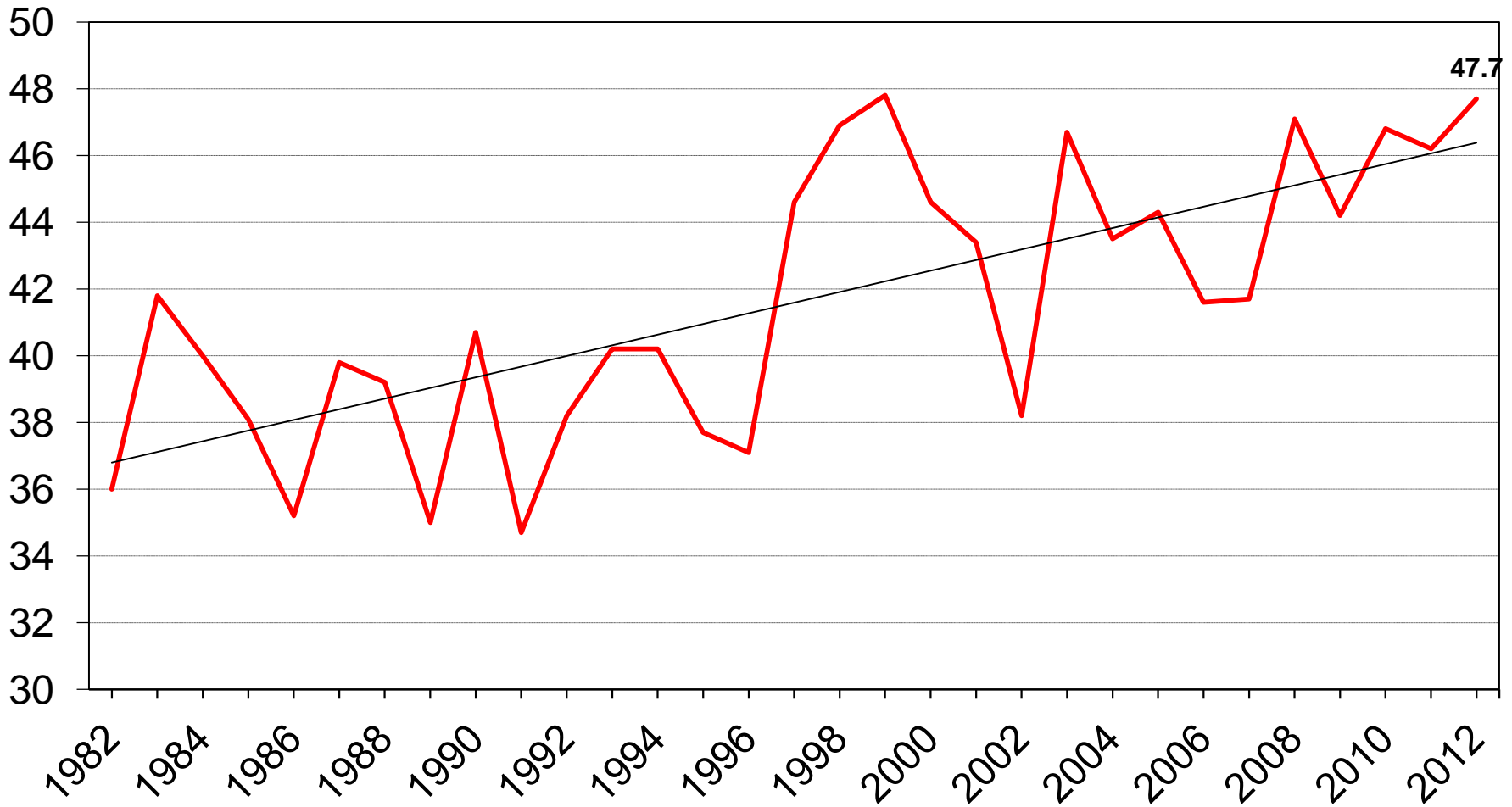
Crop	Unit	July 2012	% Change from Previous Forecast	% Change from Previous Season
Winter Wheat Production by Class				
Hard Red	Bil Bu	1.01	- 1.4	+ 29.4
Soft Red	Mil Bu	429	+ 0.1	- 6.2
White	Mil Bu	232	+ 0.2	- 9.5



U.S. Winter Wheat Yield



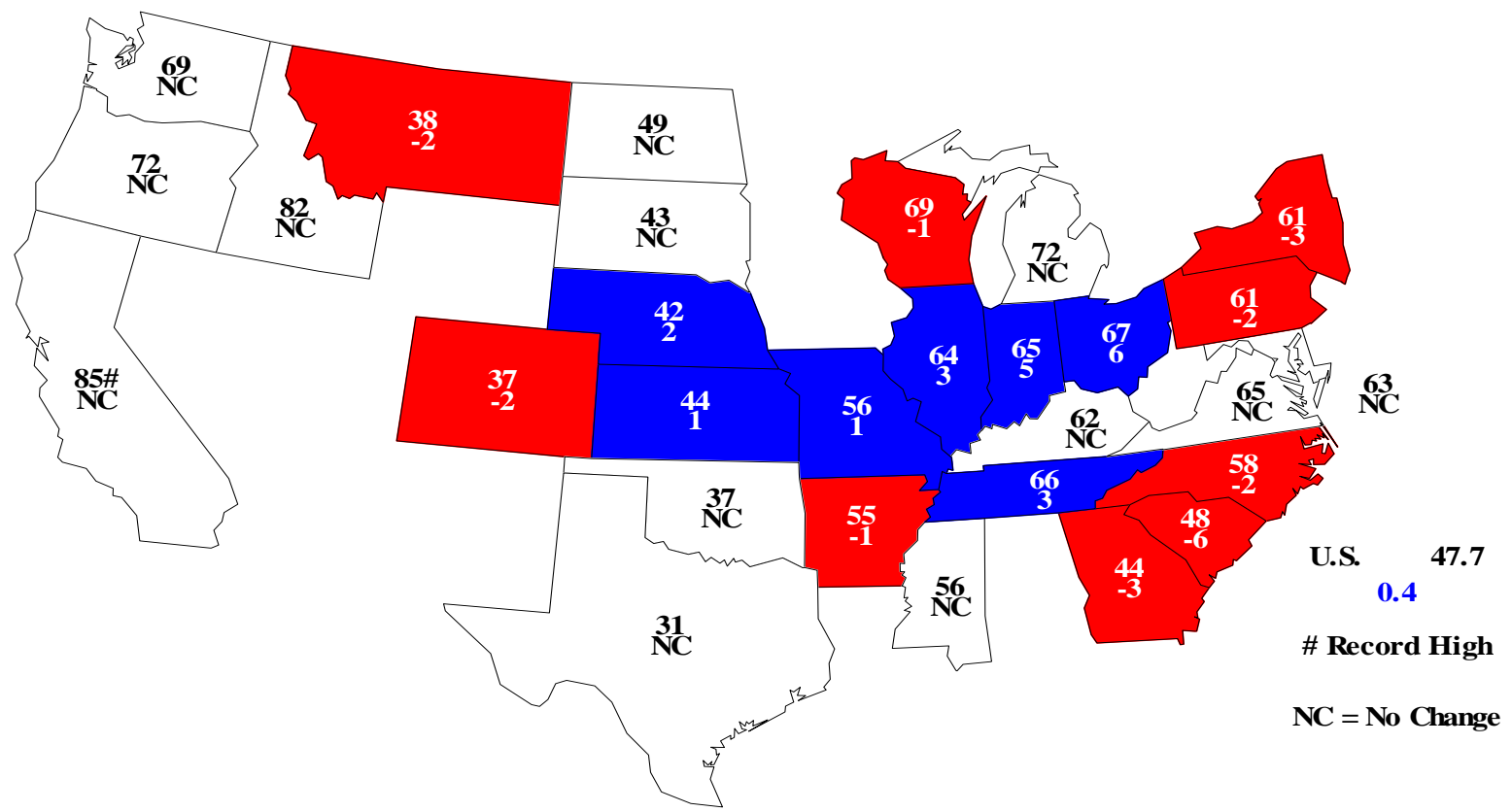
Bushels/acre





Winter Wheat Yield - July 1, 2012

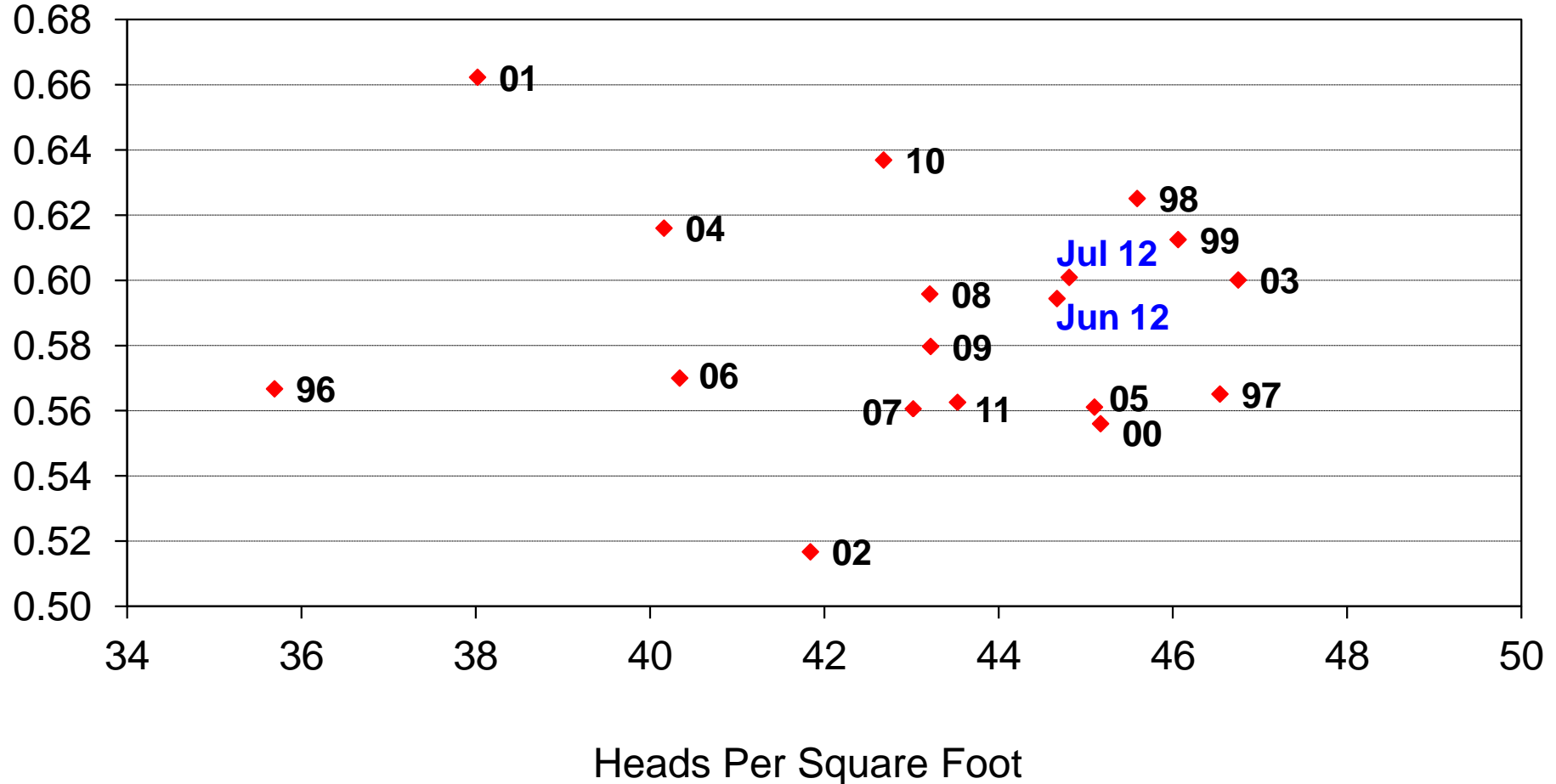
Bushels and Change From Previous Month





10-State Winter Wheat Region Derived Head Weight vs Heads Per Square Foot

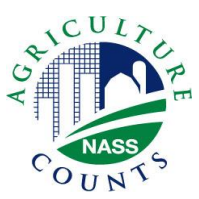
Grams/Head





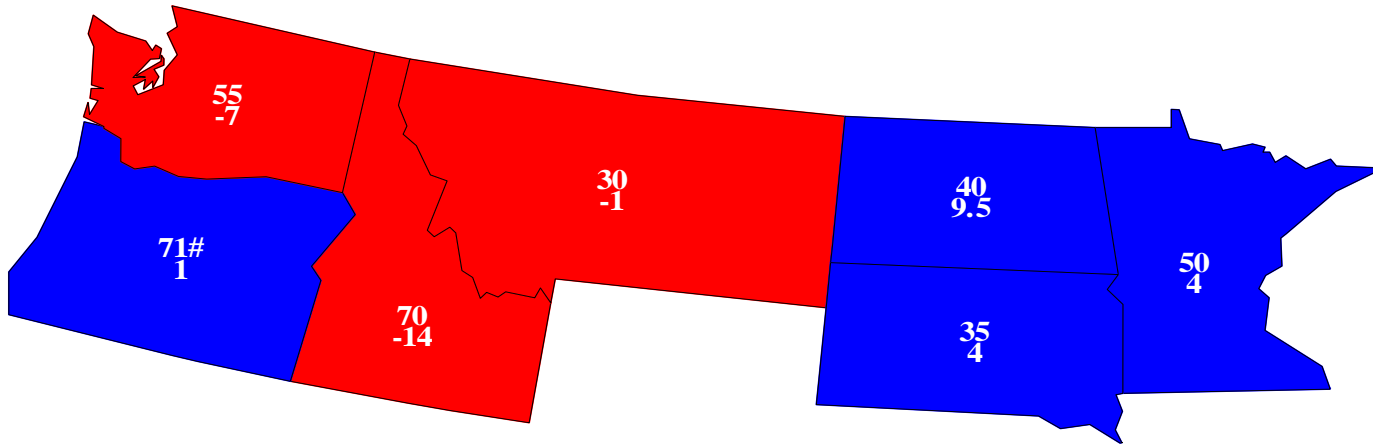
July 2012 Crop Production

Crop	Unit	July 2012	% Change from Previous Forecast	% Change from Previous Season
Other Spring Wheat				
Harvested	Mil Ac	11.7	NC	- 3.3
Yield	Bu/Ac	40.4	---	+ 7.2
Production	Mil Bu	472	---	+ 3.6



Other Spring Wheat Yield - July 1, 2012

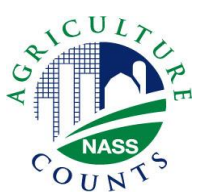
Bushels and Change From Previous Year



U.S. 40.4

2.7

Record High



July 2012 Crop Production

Crop	Unit	July 2012	% Change from Previous Forecast	% Change from Previous Season
Durum Wheat				
Harvested	Mil Ac	2.12	NC	+ 61.7
Yield	Bu/Ac	38.6	---	+ 0.3
Production	Mil Bu	82.0	---	+ 62.4



July 2012 Crop Production

Crop	Unit	July 2012	% Change from Previous Forecast	% Change from Previous Season
All Wheat				
Harvested	Mil Ac	48.8	NC	+ 6.8
Yield	Bu/Ac	45.6	---	+ 4.3
Production	Bil Bu	2.22	---	+ 11.2



July 2012 Crop Production

Crop	Unit	July 2012	% Change from Previous Forecast	% Change from Previous Season
Oats				
Harvested	Mil Ac	1.09	NC	+ 16.2
Yield	Bu/Ac	59.8	---	+ 4.7
Production	Mil Bu	65.3	---	+ 21.7
Barley				
Harvested	Mil Ac	3.27	NC	+ 46.0
Yield	Bu/Ac	66.3	---	- 4.7
Production	Mil Bu	217	---	+ 39.1



July 2012 Crop Production

Crop	Unit	July 2012	% Change from Previous Forecast	% Change from Previous Season
Oranges	Mil Tons	8.97	+ 0.2	+ 0.8
Grapefruit	Mil Tons	1.13	- 1.7	- 10.8
Lemons	Thou Tons	830	+ 2.2	- 9.8
Tangerines and Mandarins	Thou Tons	648	+ 7.3	+ 3.0



July 2012 Crop Production

Crop	Unit	July 2012	% Change from Previous Forecast	% Change from Previous Season
Apricots	Thou Tons	67.8	---	+ 1.7
Almonds, CA	Bil Lbs	2.10	---	+ 3.4
Tobacco				
Flue-Cured	Mil Lbs	432	---	+ 25.5



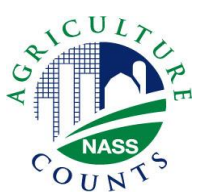
July 2012 Crop Production

Crop	Unit	July 2012	% Change from Previous Forecast	% Change from Previous Season
Summer Potatoes				
Harvested	Thou Ac	47.5	+ 1.1	+ 3.3
Yield	Cwt/Ac	342	---	+ 21.3
Production	Mil Cwt	16.3	---	+ 25.5
Fall Potatoes				
Planted	Mil Ac	1.00	---	+ 4.8
Harvested	Thou Ac	991	---	+ 5.5



July 2012 Crop Production

Crop	Unit	July 2012	% Change from Previous Season
Lentils			
Planted	Thou Ac	478	+ 11.7
Dry Edible Peas			
Planted	Thou Ac	600	+ 65.7
Austrian Winter Peas			
Planted	Thou Ac	19.0	+ 5.6



United States Department of Agriculture
National Agricultural Statistics Service

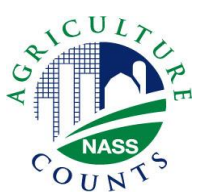


Upcoming Reports

July 20 Cattle

July 31 Agricultural Prices

August 10 Crop Production



United States Department of Agriculture
National Agricultural Statistics Service



All Reports Available At

www.nass.usda.gov

For Questions

202-720-2127

800-727-9540

nass@nass.usda.gov