



United States Department of Agriculture
National Agricultural Statistics Service



SEPTEMBER CROP PRODUCTION

Executive Summary

September 12, 2013

12:00 PM



Contents



Field Crops	Fruits/Nuts	Specialty Crops
Corn	Navel Oranges	Tobacco
Soybeans		Sugarbeets
Cotton		Sugarcane
Rice		
Peanuts		
Sorghum		

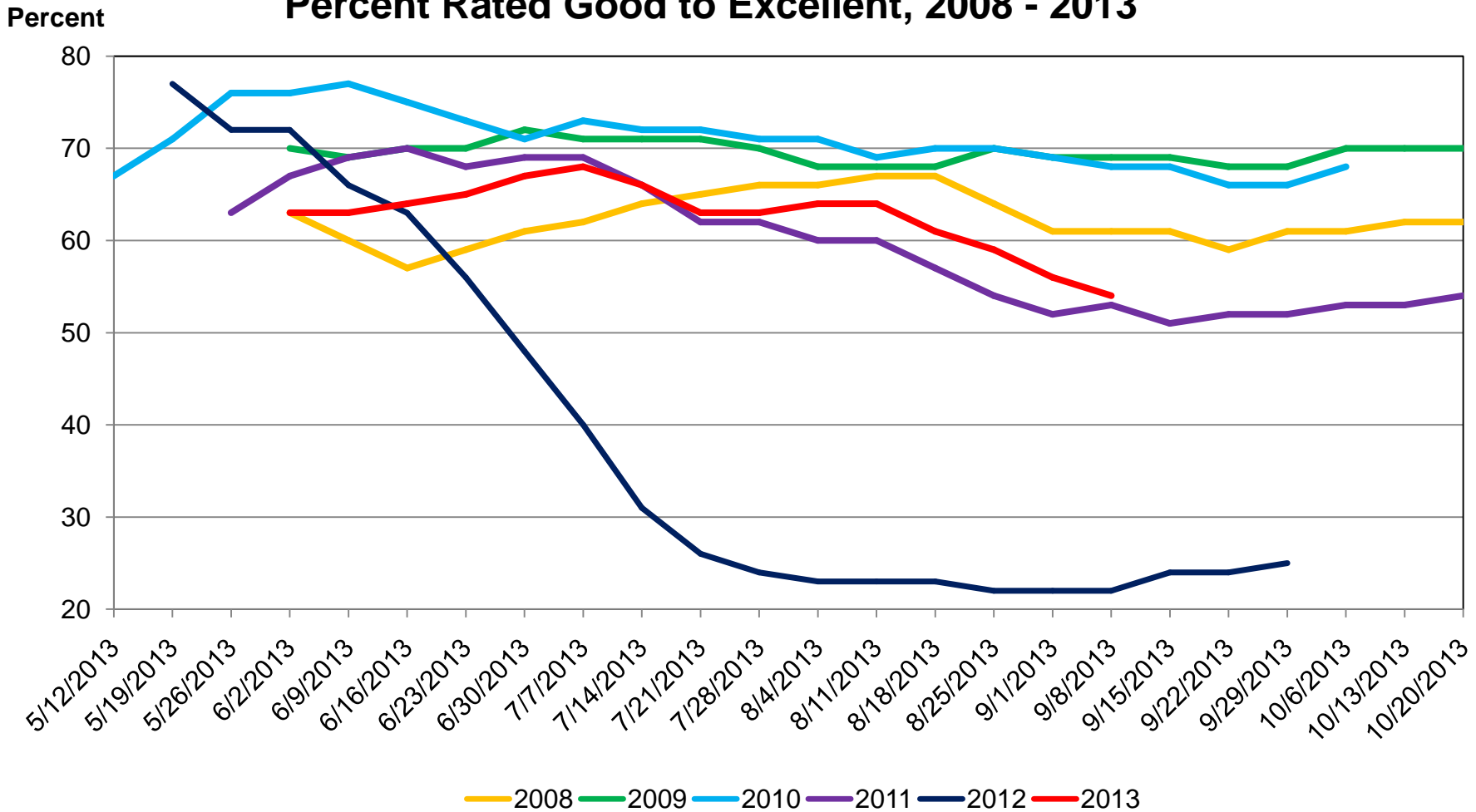


Survey Overview

	Ag Yield	Objective Yield
Survey Type	Farmer Reported	Field Measurement
Crops Included	Field Crops	Corn, Soybeans, Cotton
Sample Size	~ 11,500	4,972
Collection Period	Aug 29 – Sep 6	Aug 24 – Sep 1

U. S. Corn Condition

Percent Rated Good to Excellent, 2008 - 2013





September 2013 Crop Production

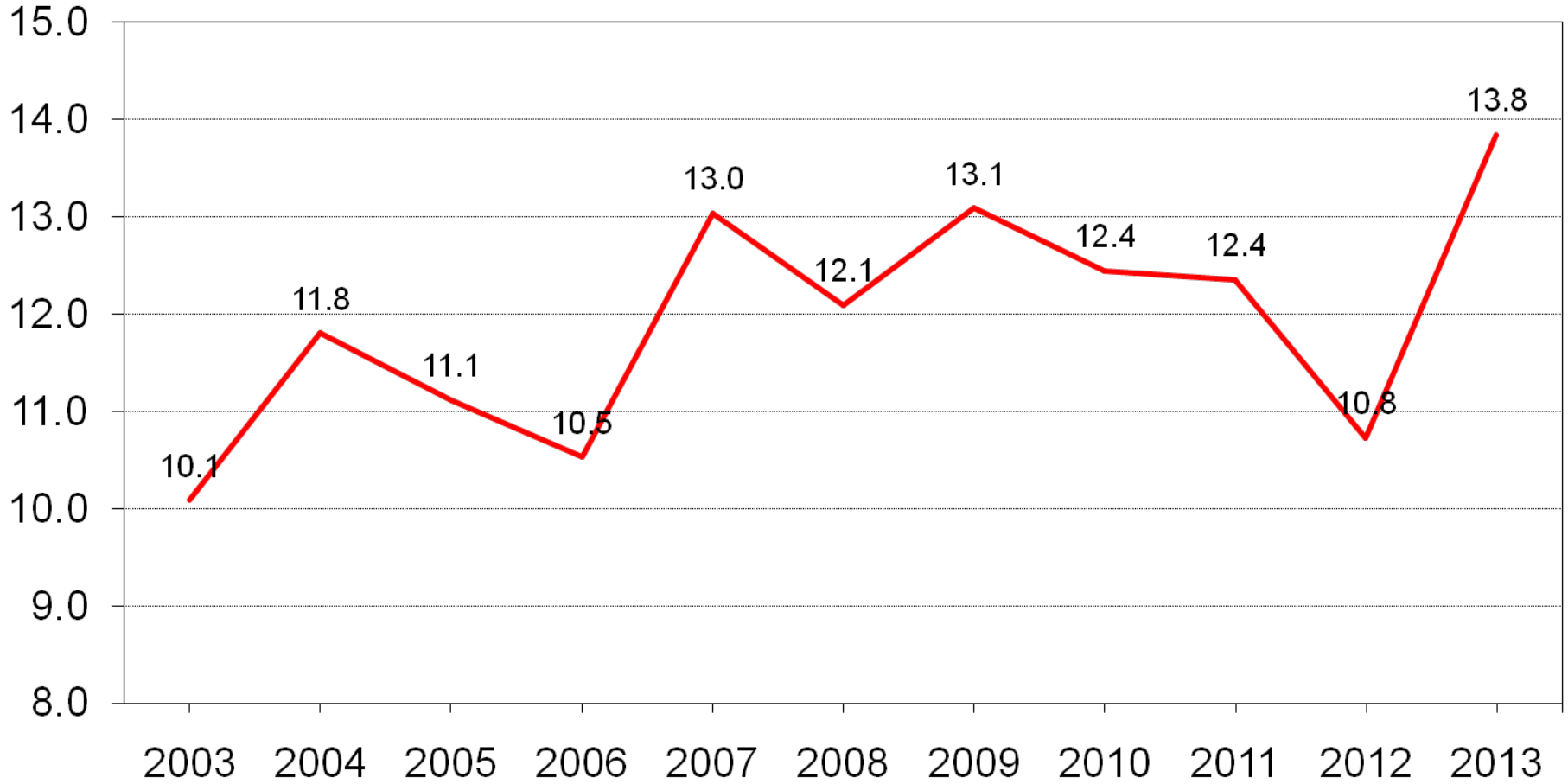
Crop	Unit	September 2013	% Change from Previous Forecast	% Change from Previous Season
Corn				
Harvested	Mil Ac	89.1	NC	+2.0
Yield	Bu/Ac	155.3	+0.6	+25.9
Production	Bil Bu	13.8	+0.6	+28.4



U.S. Corn Production



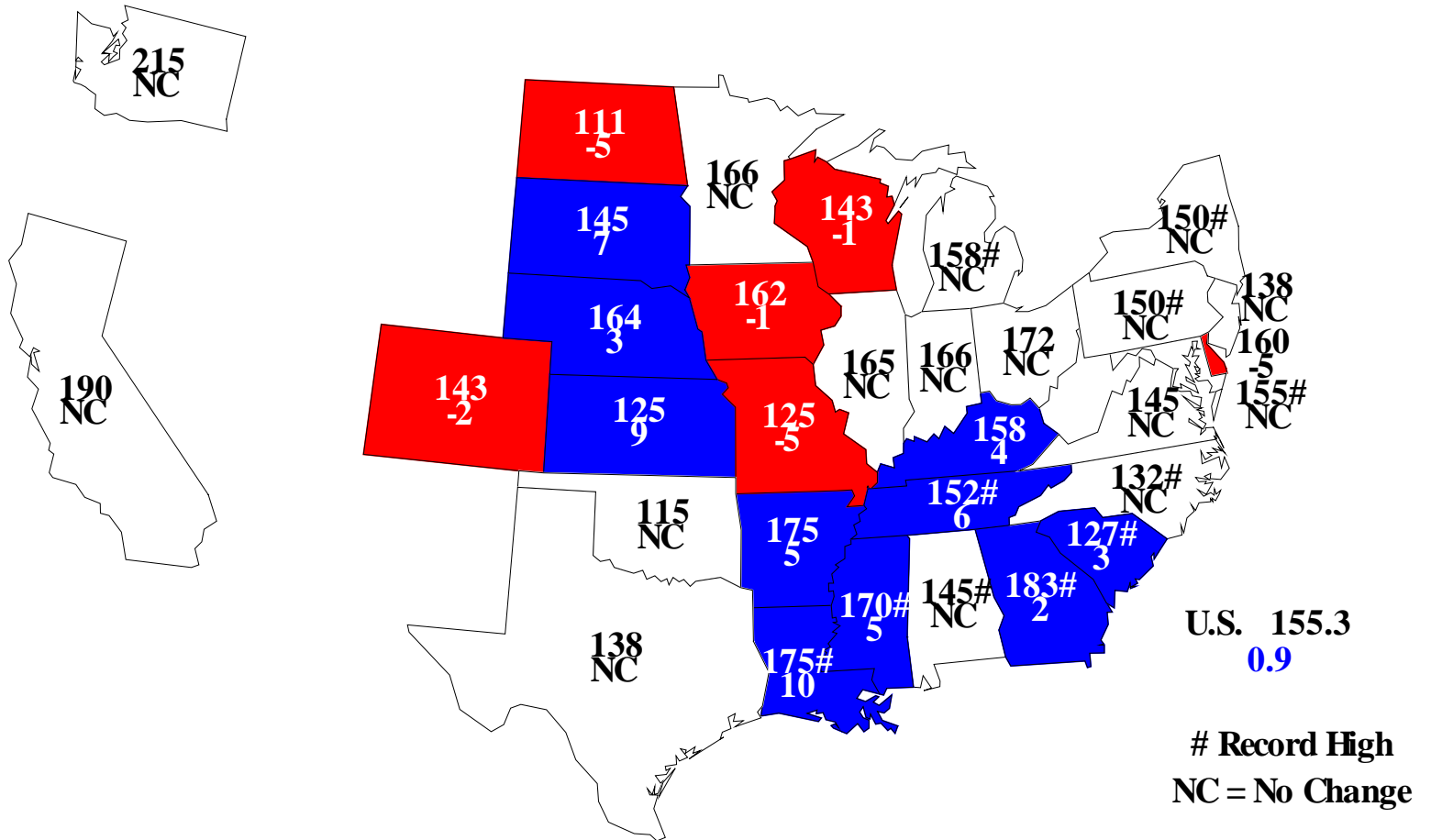
Billion bushels





Corn for Grain Yields, 2013

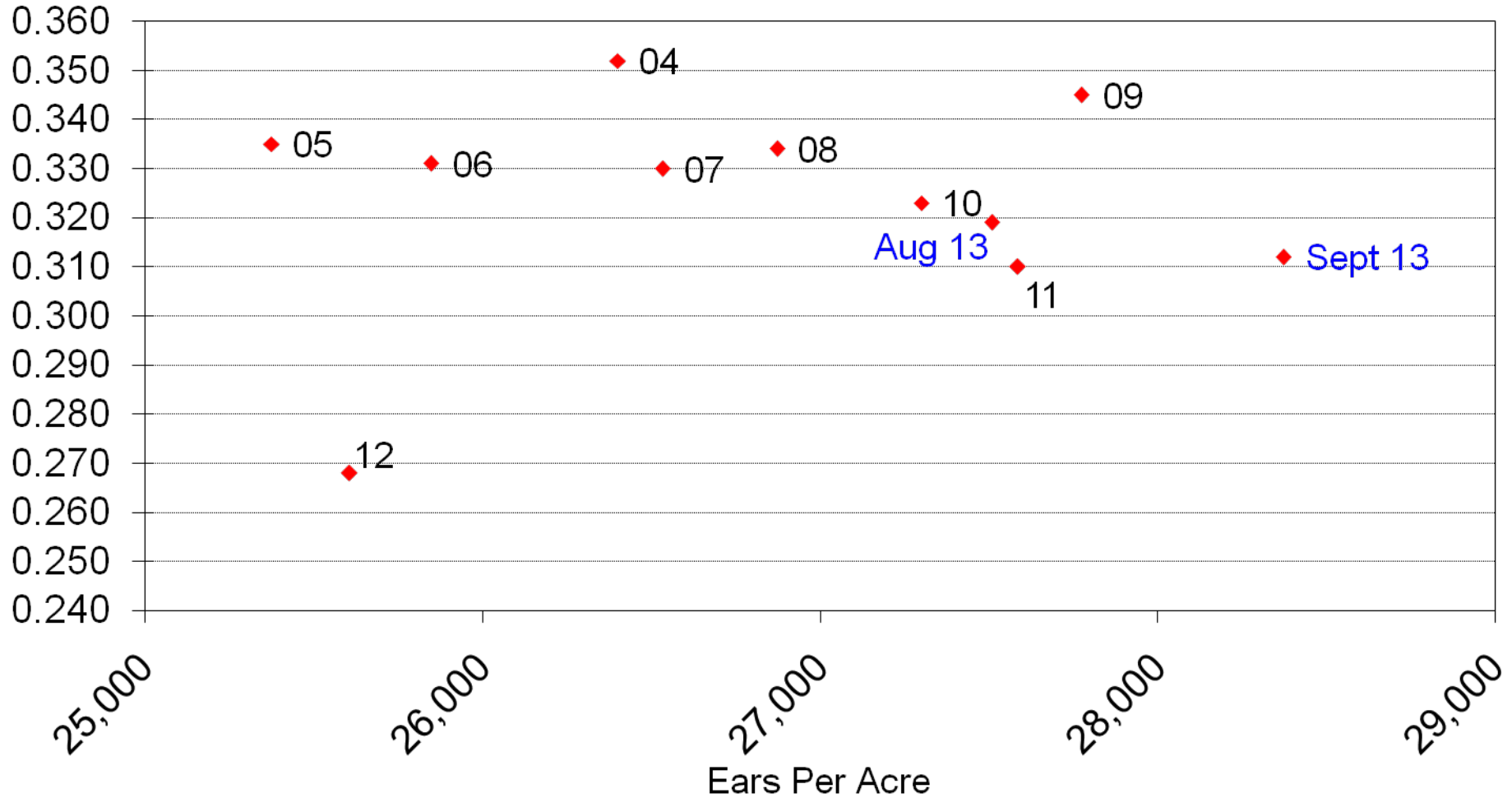
Bushels and Change From Previous Month





Corn Objective Yield Region Derived Grain Weight vs Ears per Acre

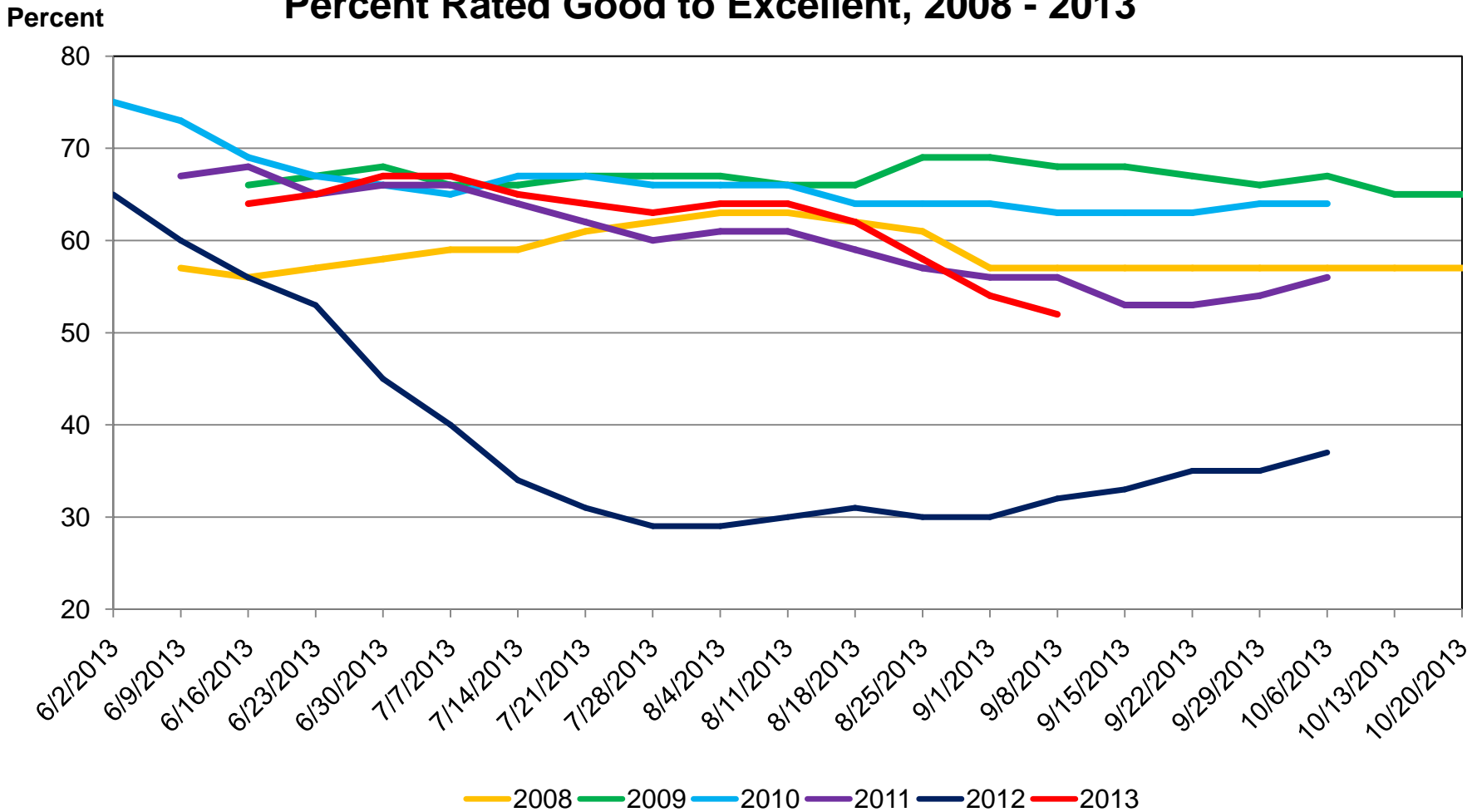
Lbs/Ear





U. S. Soybean Condition

Percent Rated Good to Excellent, 2008 - 2013





September 2013 Crop Production

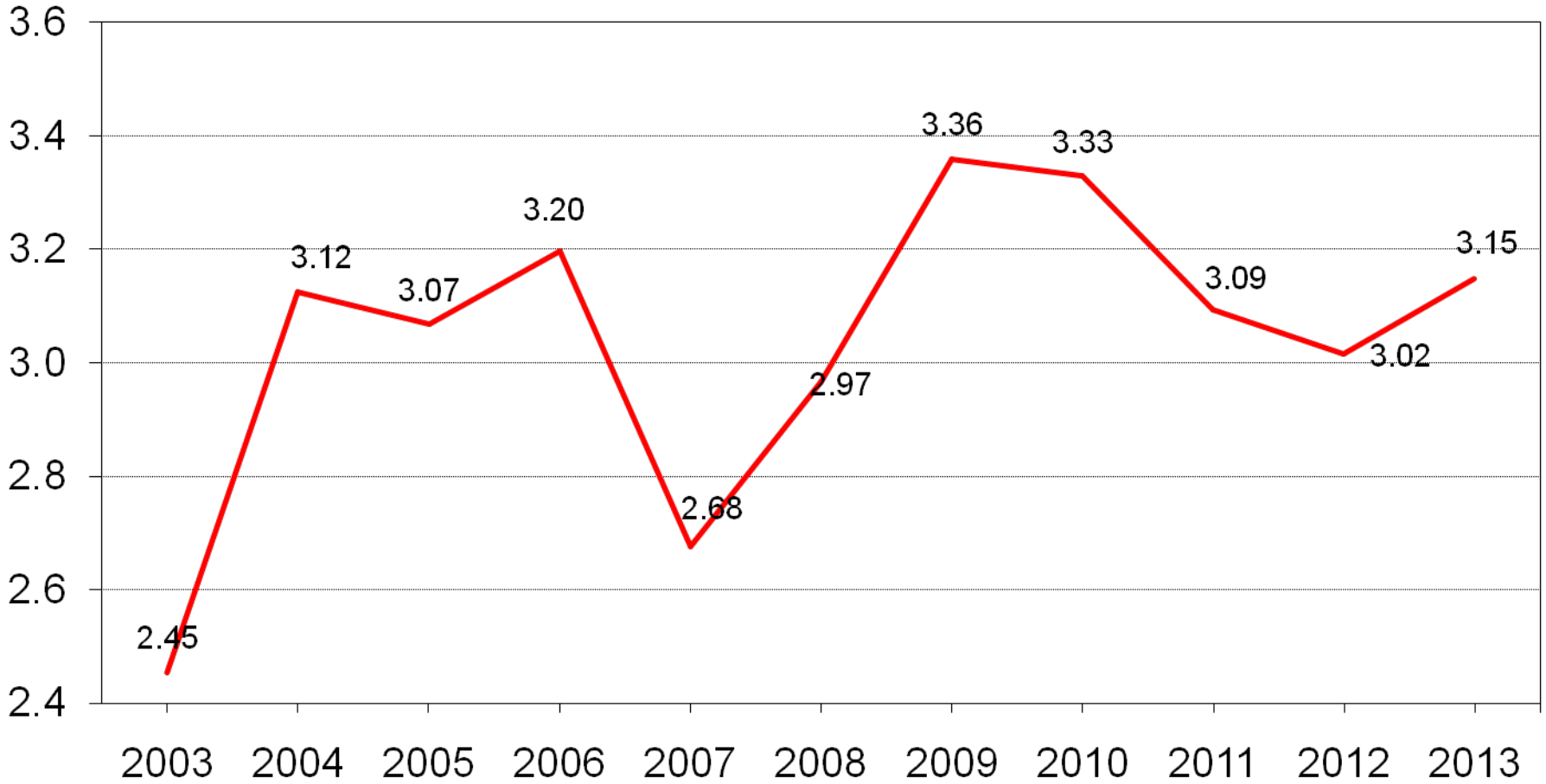
Crop	Unit	September 2013	% Change from Previous Forecast	% Change from Previous Season
Soybeans				
Harvested	Mil Ac	76.4	NC	+0.4
Yield	Bu/Ac	41.2	-3.3	+4.0
Production	Bil Bu	3.15	-3.3	+4.5



U.S. Soybean Production



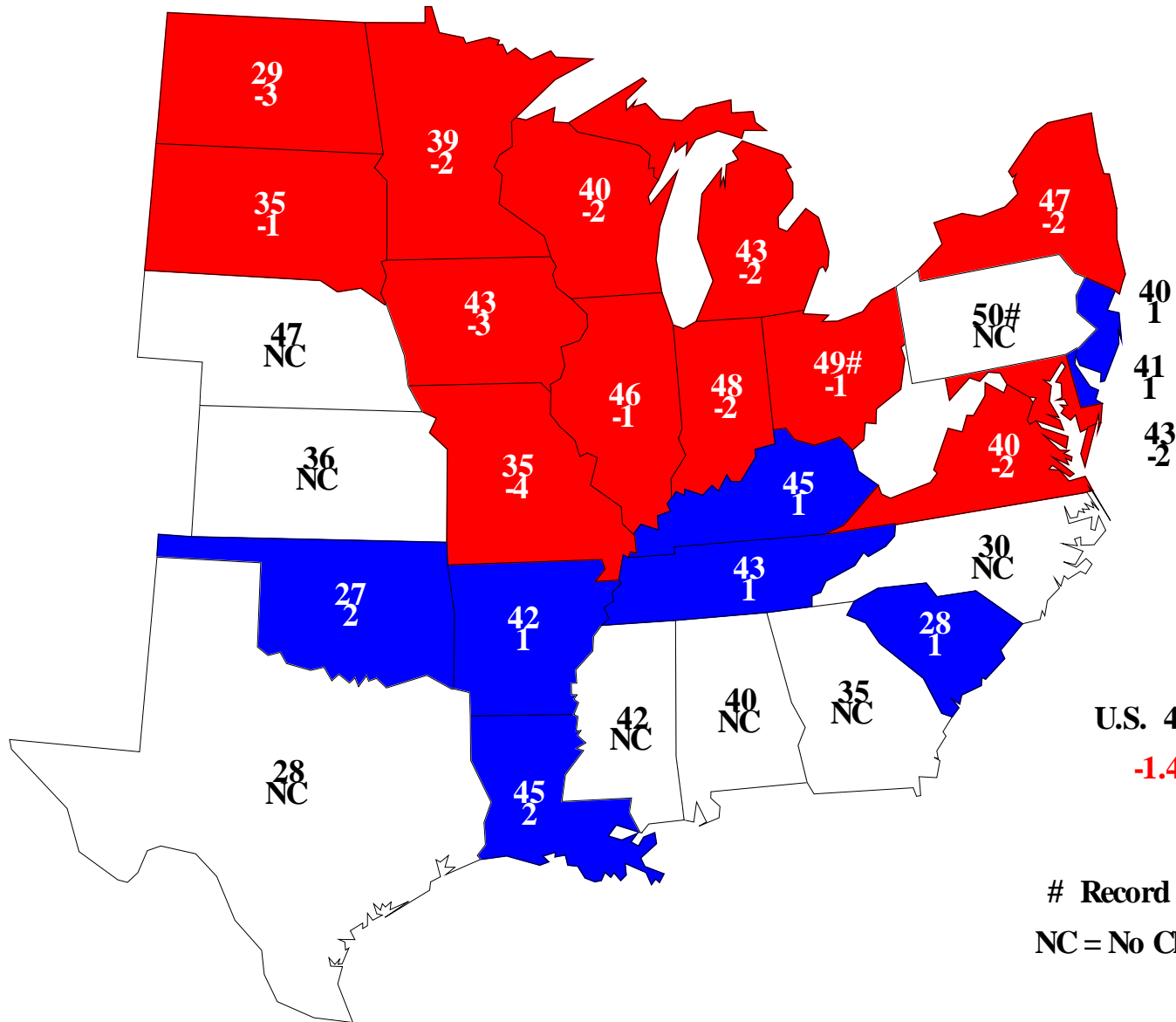
Billion bushels





Soybean Yields, September 1, 2013

Bushels and Change From Previous Month

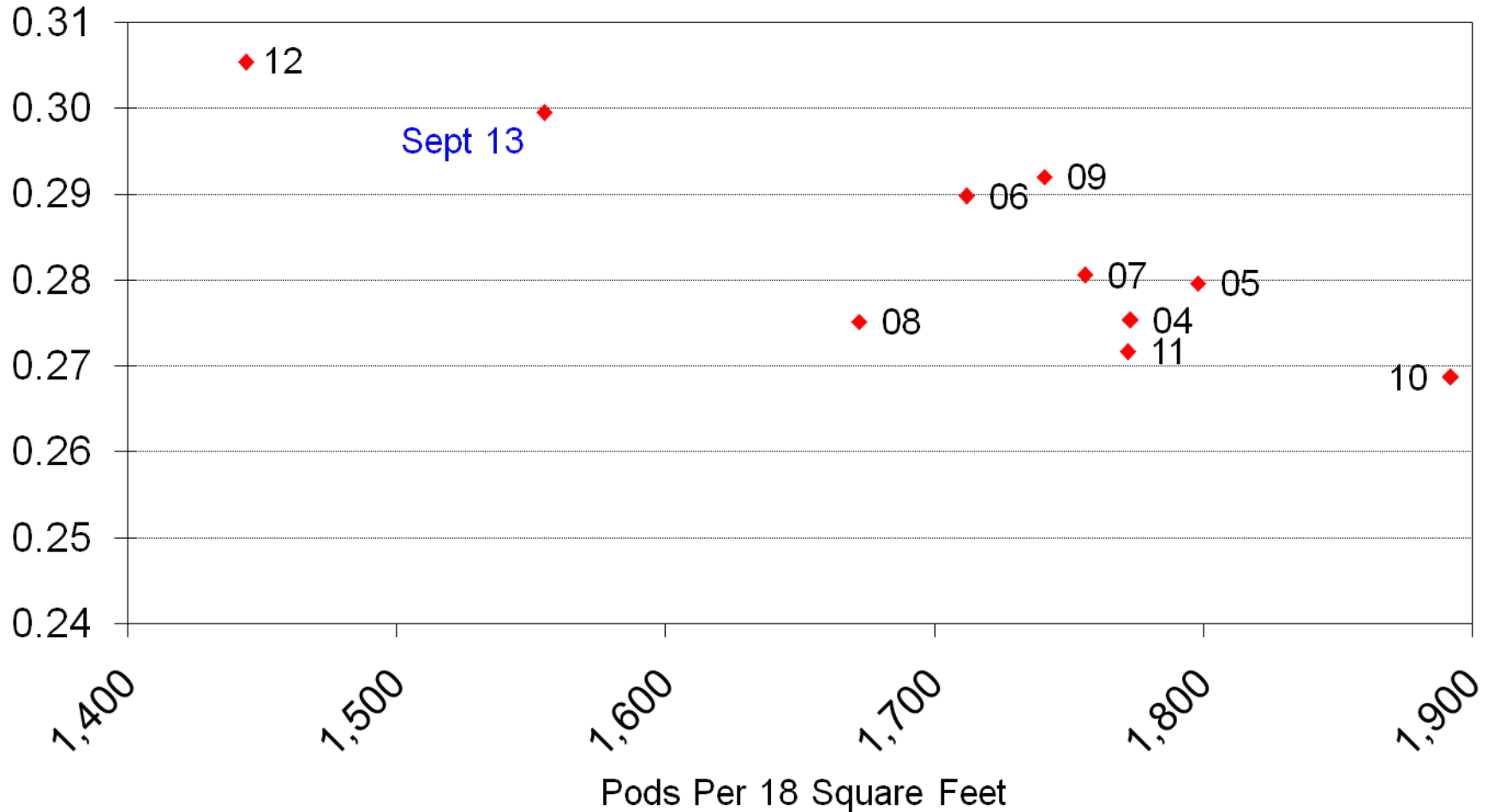




Soybean Objective Yield Region Derived Pod Weight vs Pod Count



Grams/Pod

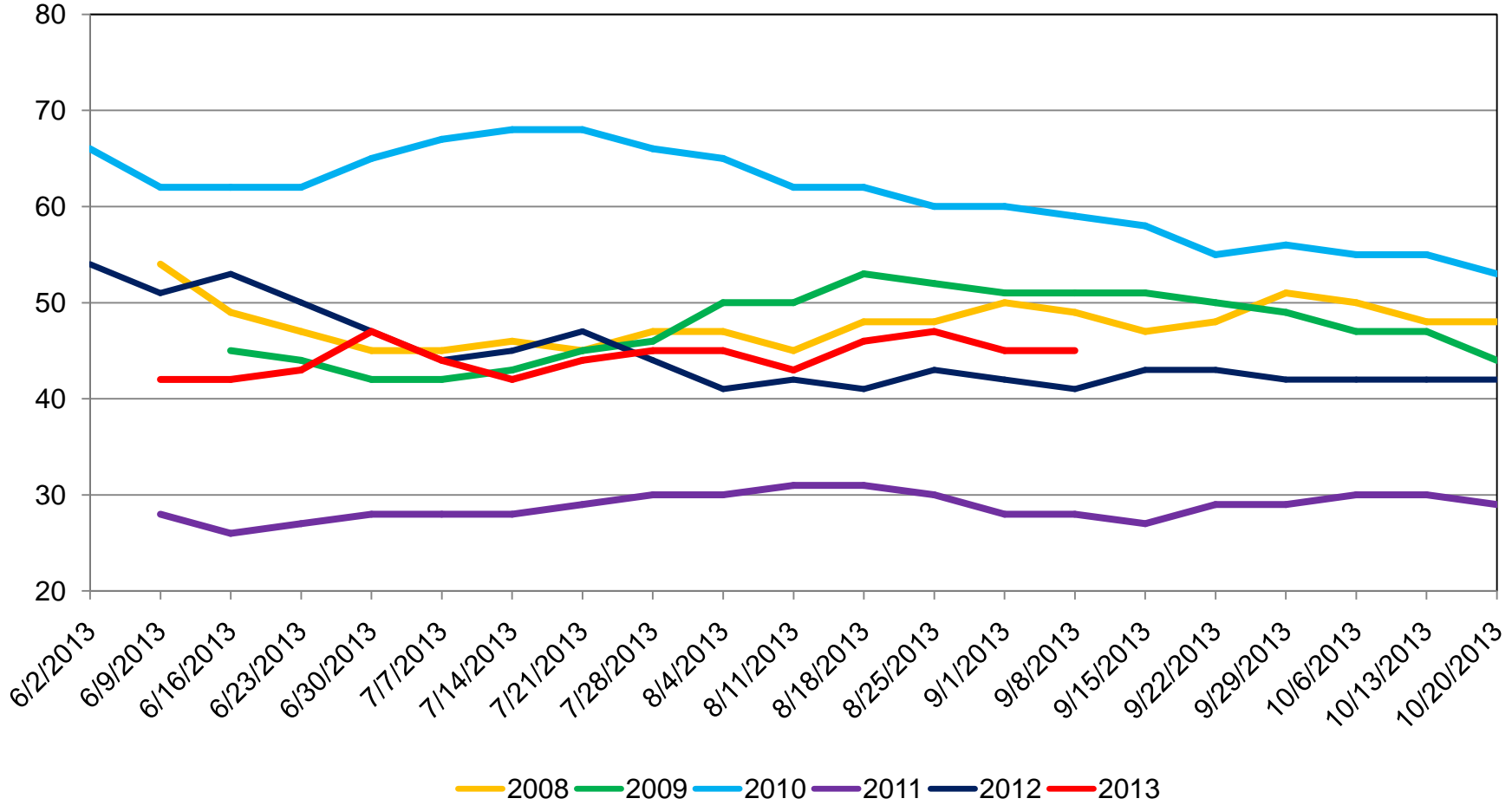




U. S. Cotton Condition

Percent Rated Good to Excellent, 2008 - 2013

Percent





September 2013 Crop Production

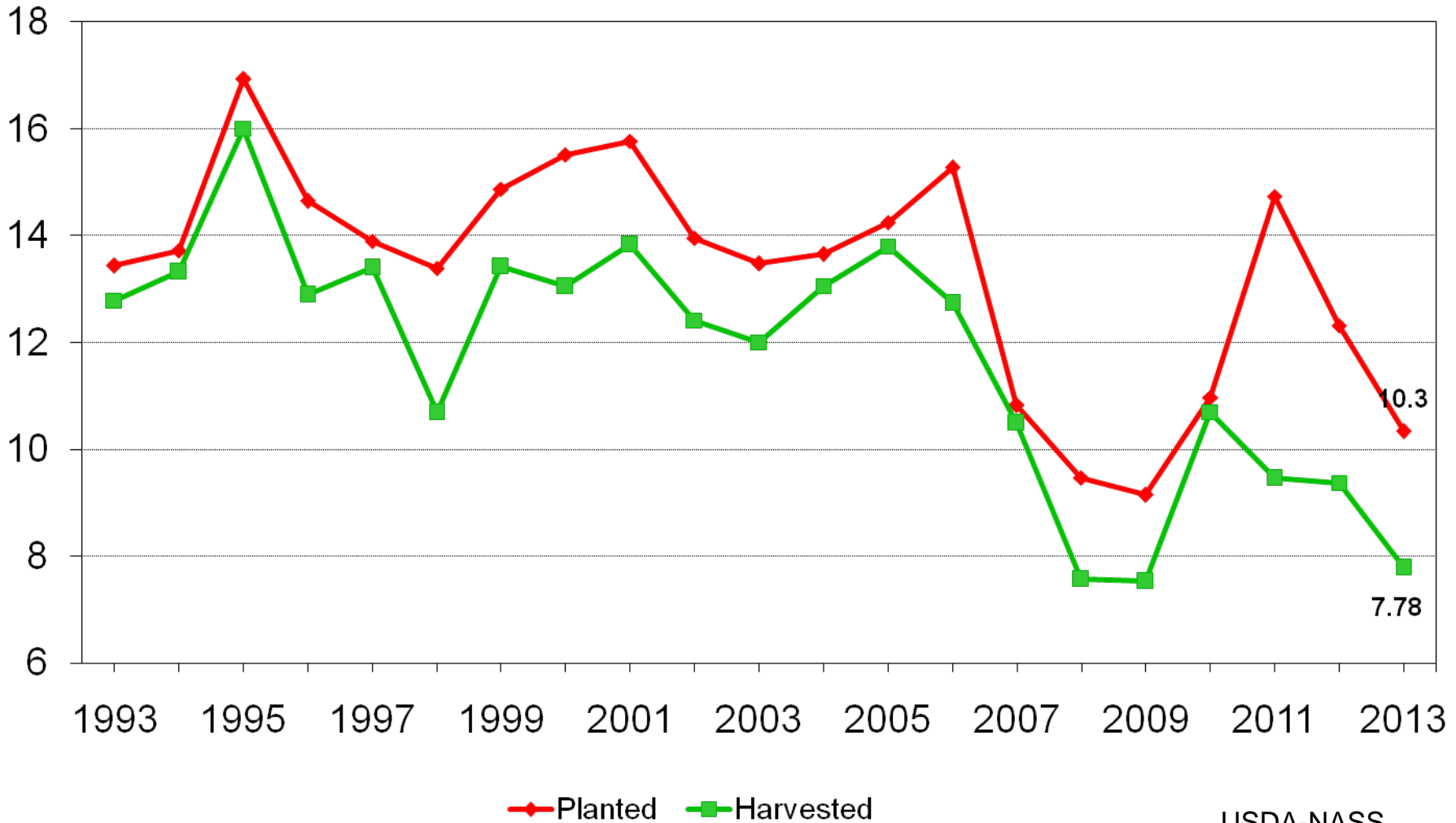
Crop	Unit	September 2013	% Change from Previous Forecast	% Change from Previous Season
Cotton				
Planted	Mil Ac	10.3	+1.3	-16.1
Harvested	Mil Ac	7.78	+1.0	-17.0
Yield	Lbs/Ac	796	-2.1	-10.3
Production	Mil Bales	12.9	-1.2	-25.5



U.S. All Cotton Acres



Million acres



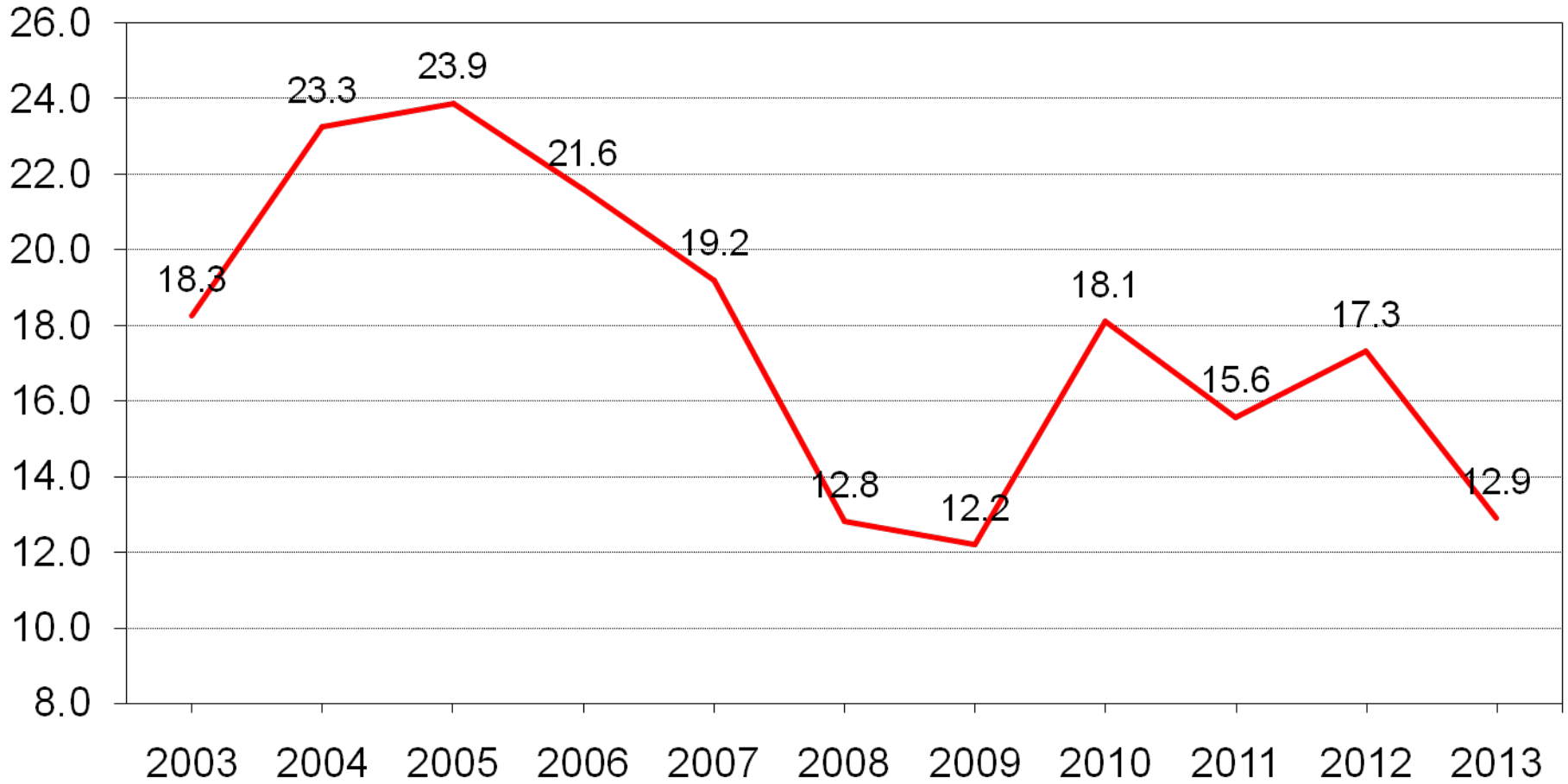
USDA-NASS
9-12-13



U.S. All Cotton Production



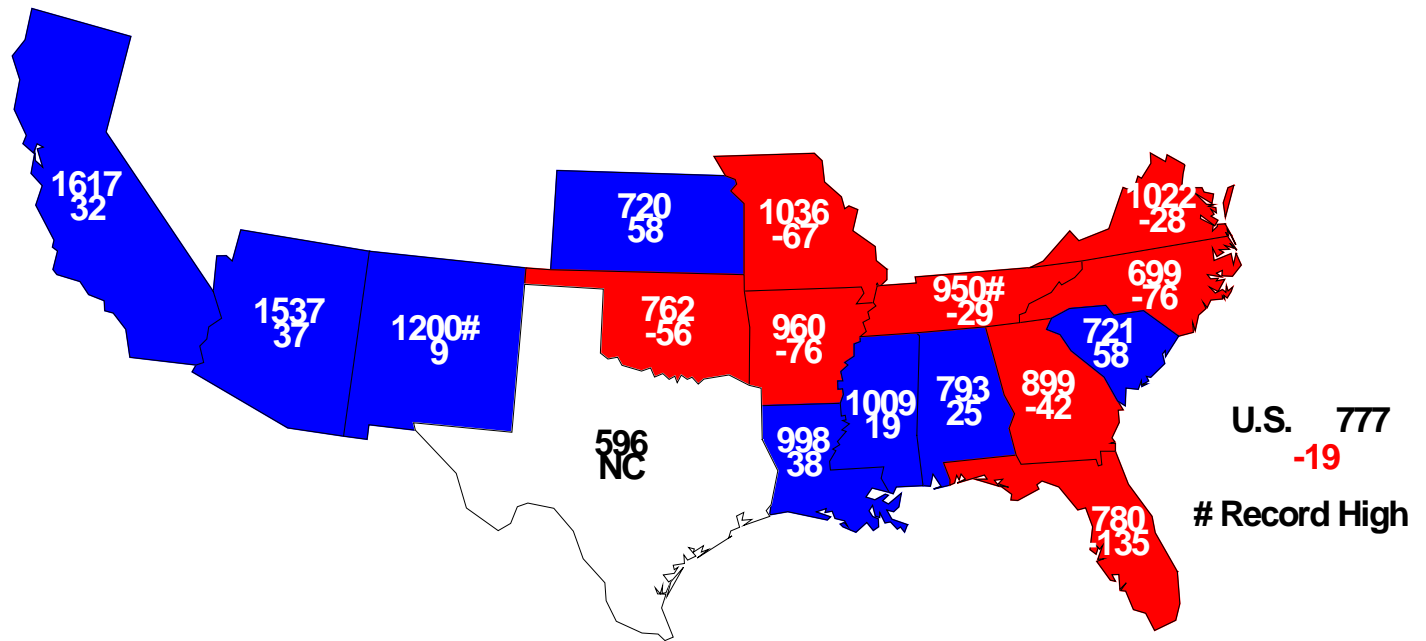
Million bales





Upland Cotton Yield, September 1, 2013

Pounds and Change From Previous Month





September 2013 Crop Production

Crop	Unit	September 2013	% Change from Previous Forecast	% Change from Previous Season
Rice				
Planted	Mil Ac	2.49	+0.6	-7.9
Harvested	Mil Ac	2.46	+0.6	-8.0
Yield	Lbs/Ac	7,511	+1.4	+0.8
Production	Mil Cwt	185	+2.0	-7.2



September 2013 Crop Production

Crop	Unit	September 2013	% Change from Previous Forecast	% Change from Previous Season
Peanuts				
Planted	Mil Ac	1.06	-3.6	-35.4
Harvested	Mil Ac	1.03	-3.1	-35.9
Yield	Lbs/Ac	3,603	-0.5	-14.1
Production	Bil Lbs	3.71	-3.6	-45.0



September 2013 Crop Production

Crop	Unit	September 2013	% Change from Previous Forecast	% Change from Previous Season
Sorghum	Mil Bu	396	+10.4	+60.4
All Tobacco	Mil Lbs	731	+1.0	-4.2
Sugarbeets	Mil Tons	30.9	+2.9	-12.3
Sugarcane	Mil Tons	31.3	+2.9	-3.0



September 2013 Crop Production

Crop	Unit	September 2013	% Change from Previous Forecast	% Change from Previous Season
Navel Oranges (CA)	Mil Tons	1.76	NA	-2.2



United States Department of Agriculture
National Agricultural Statistics Service

Upcoming Reports

September 19 Potato Annual Summary
Citrus Annual Summary

September 27 Quarterly Hogs and Pigs

September 30 Grain Stocks
Small Grains Summary

October 11 Crop Production



United States Department of Agriculture
National Agricultural Statistics Service



All Reports Available At

www.nass.usda.gov

For Questions

202-720-2127

800-727-9540

nass@nass.usda.gov