



United States Department of Agriculture
National Agricultural Statistics Service

September Crop Production
Executive Summary

Lance Honig, Chief
Crops Branch



Contents

Field Crops	Fruit & Nuts	Specialty Crops
Corn	Navel Oranges (CA)	Tobacco
Soybeans	Hazelnuts	Sugarbeets
Cotton	Walnuts	Sugarcane
Rice		
Peanuts		
Sorghum		



Survey Overview

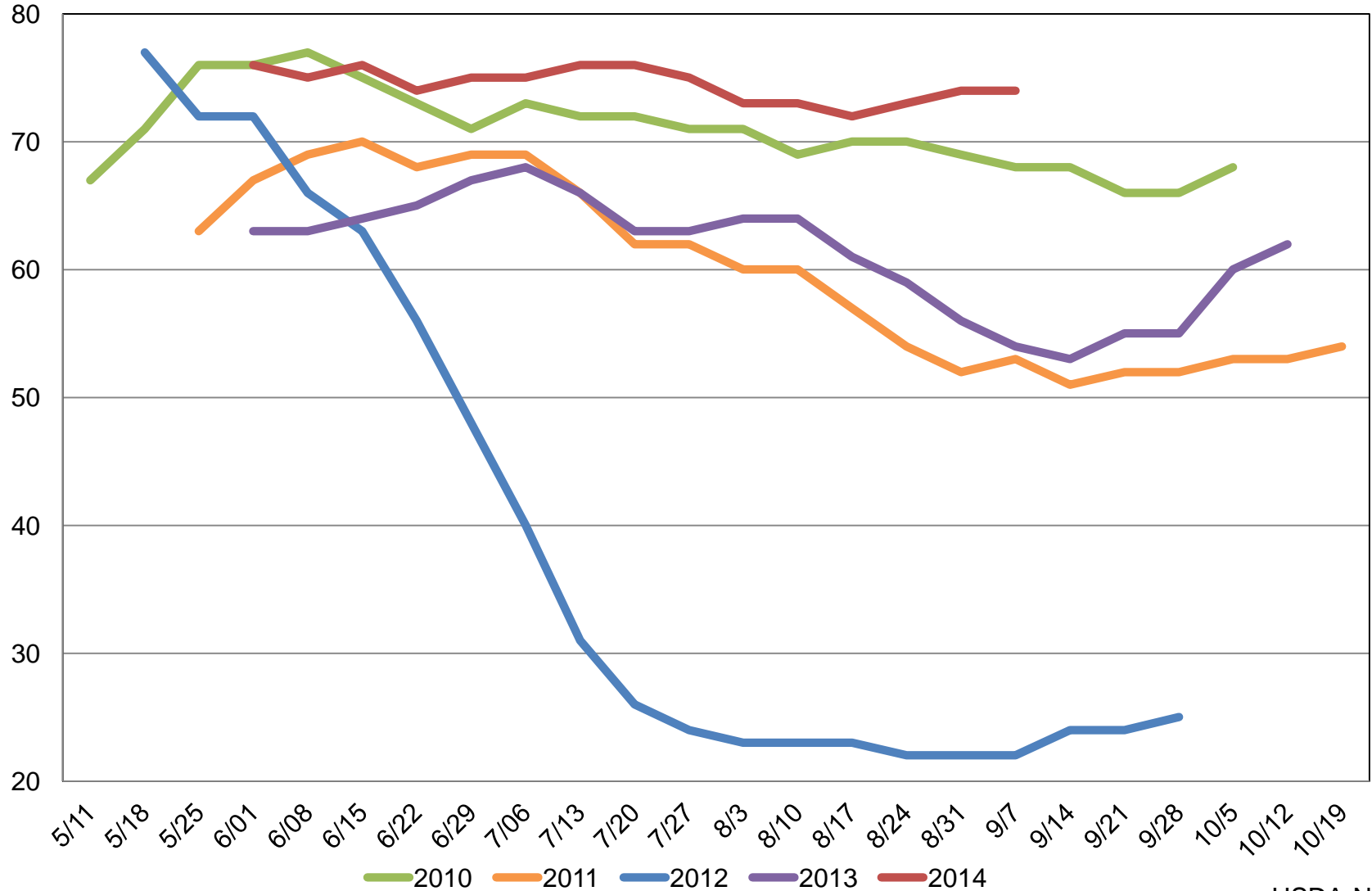
	Ag Yield	Objective Yield
Survey Type	Farmer Reported	Field Measurement
Crops Included	Field Crops	Corn, Cotton, Soybeans
Sample Size	11,984	4,972
Collection Period	Aug 27 – Sep 5	Aug 24 – Sept 2



U.S. Corn Condition

Percent Rated Good to Excellent

Percent





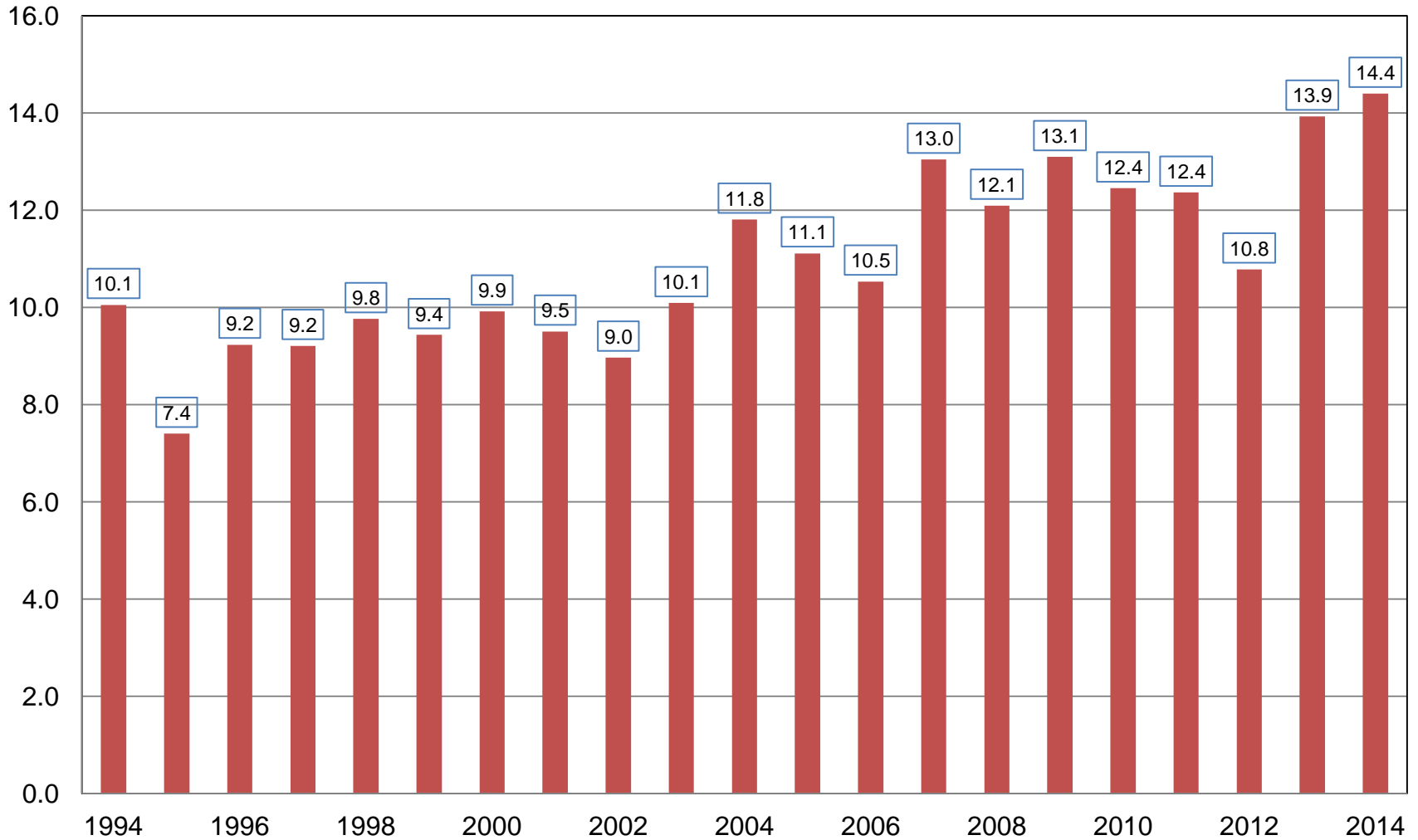
September 2014 Crop Production

Crop	Unit	September 2014	% Change From Previous Forecast	% Change From Previous Season
Corn				
Harvested	Mil Ac	83.8	NC	-4.4
Yield	Bu/Ac	171.7	+2.6	+8.1
Production	Bil Bu	14.4	+2.6	+3.4



Corn for Grain Production United States

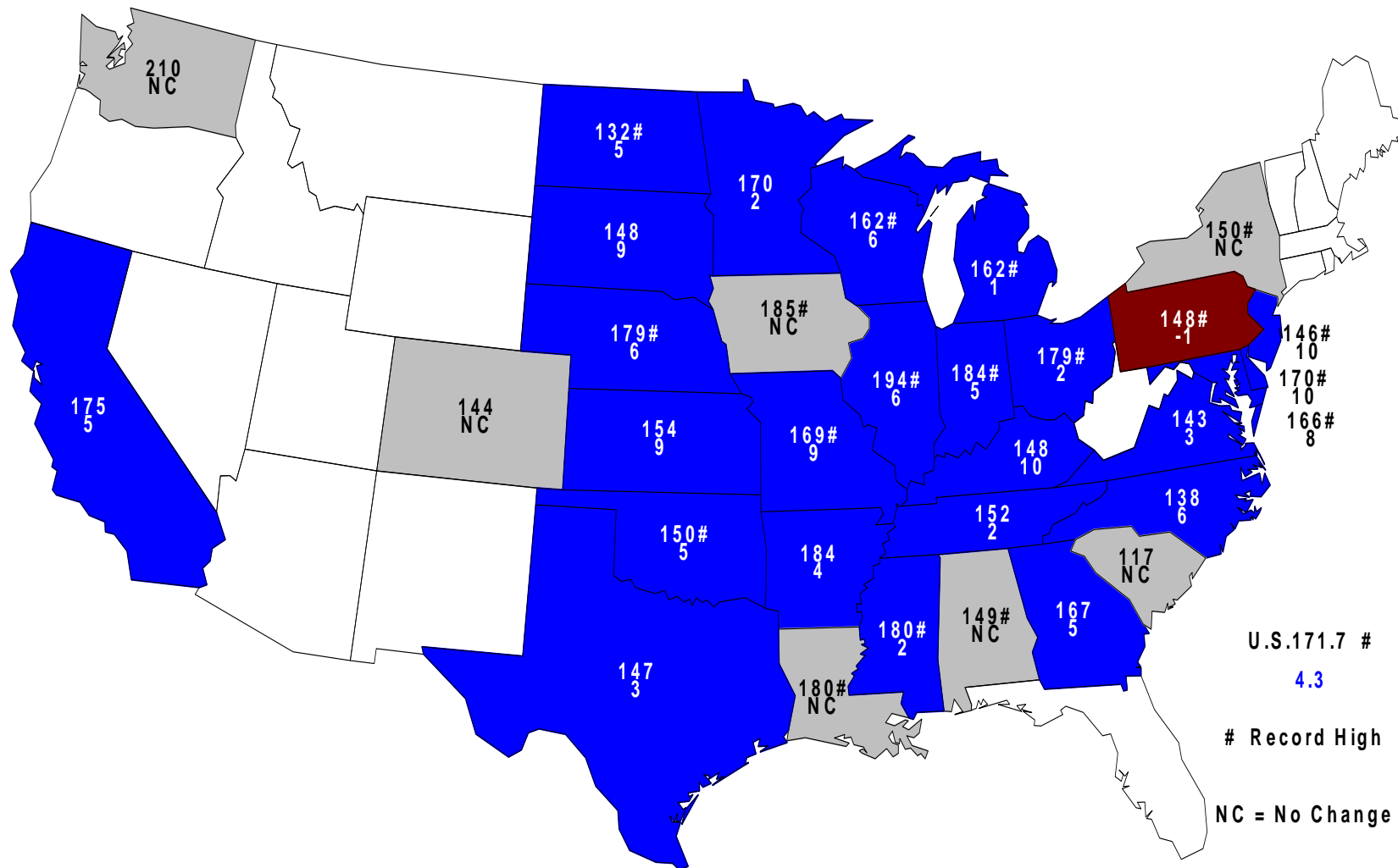
Billion Bushels





September 1, 2014 Corn Yield

Bushels and Change From Previous Month

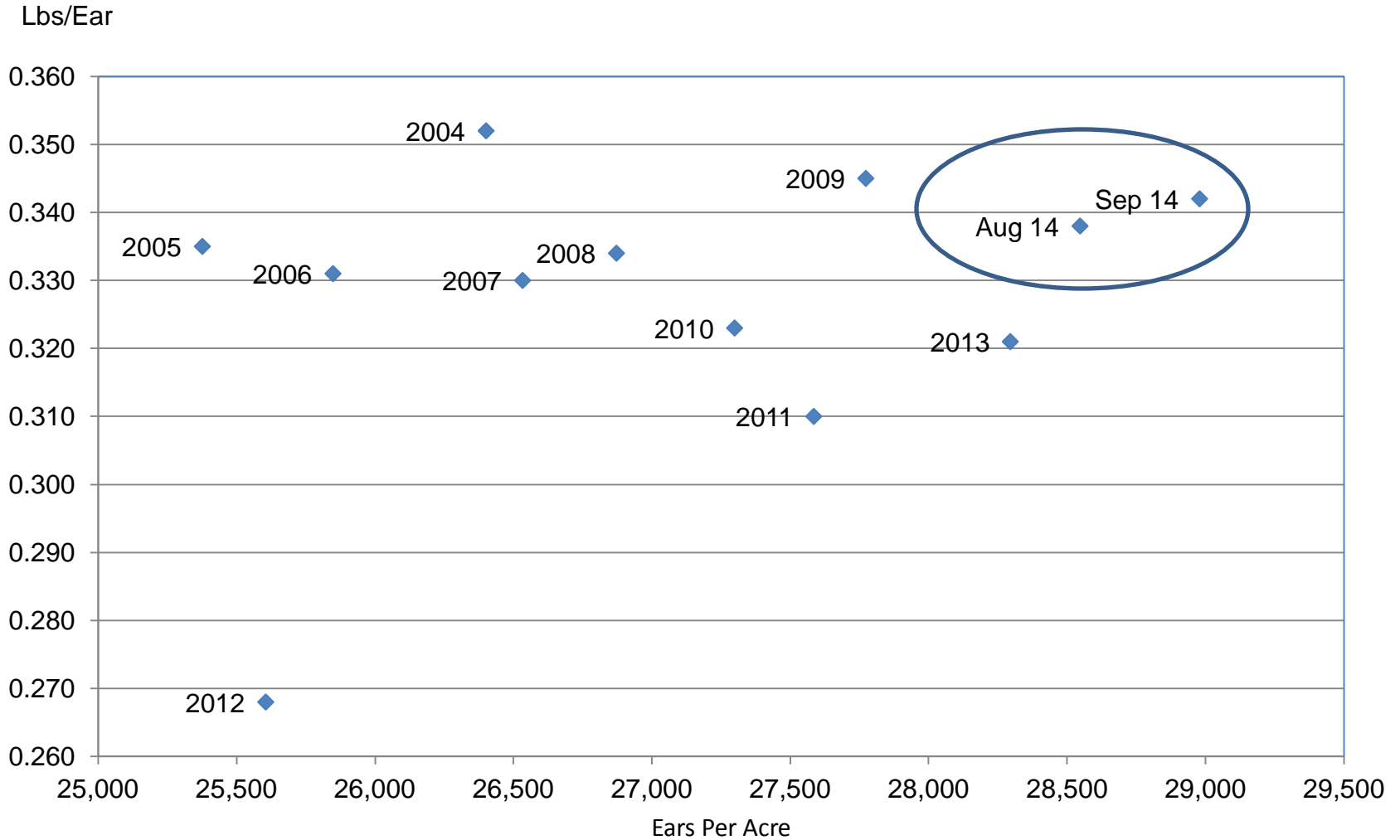


U.S. 171.7 #
4.3
Record High
NC = No Change



Corn Objective Yield Region

Ears Per Acre vs. Implied Ear Weight



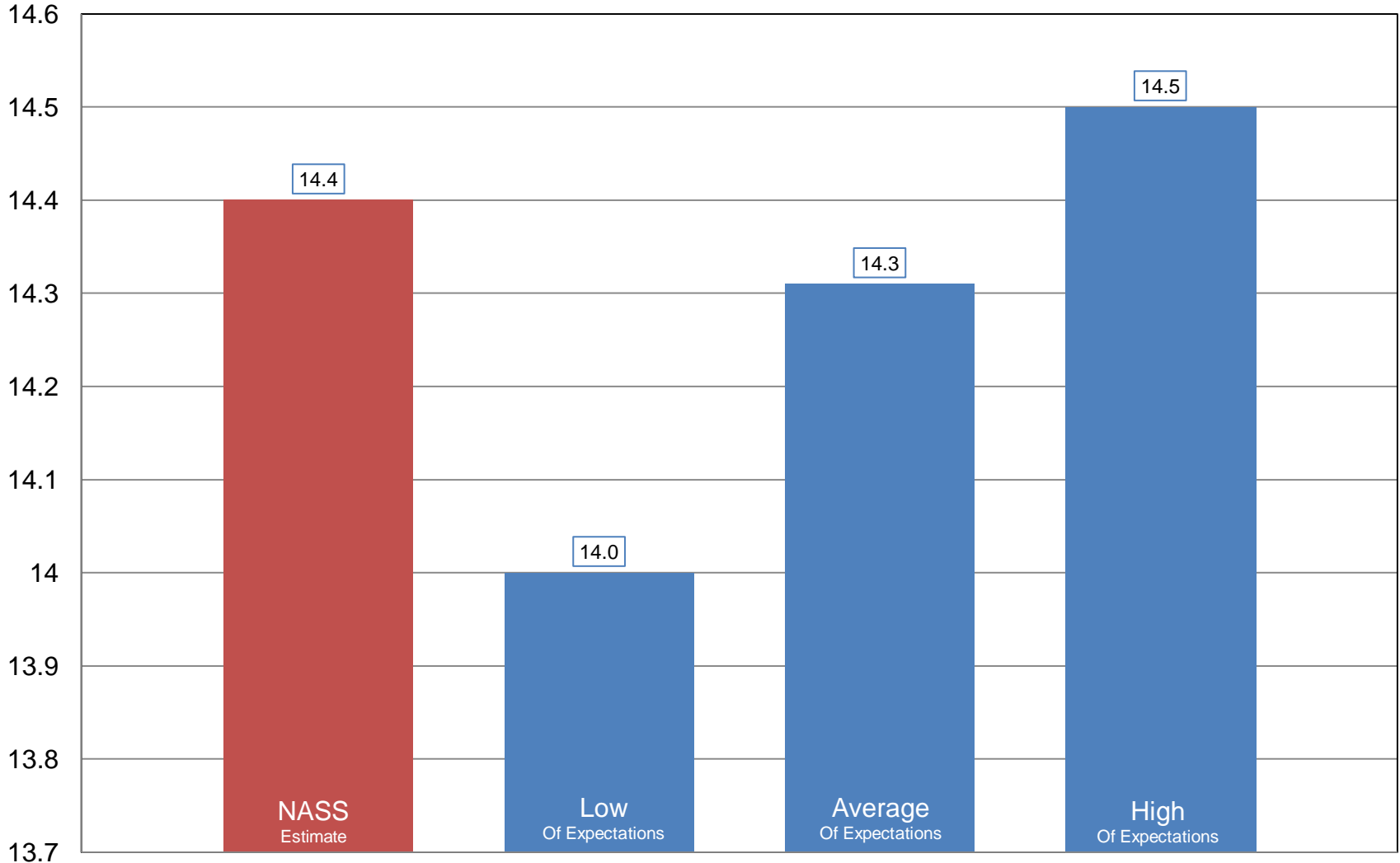
Implied Ear Weight = (Published Yield * 56) / Ears



NASS Estimate vs. Expectations

Corn Grain Production

Billion Bushels

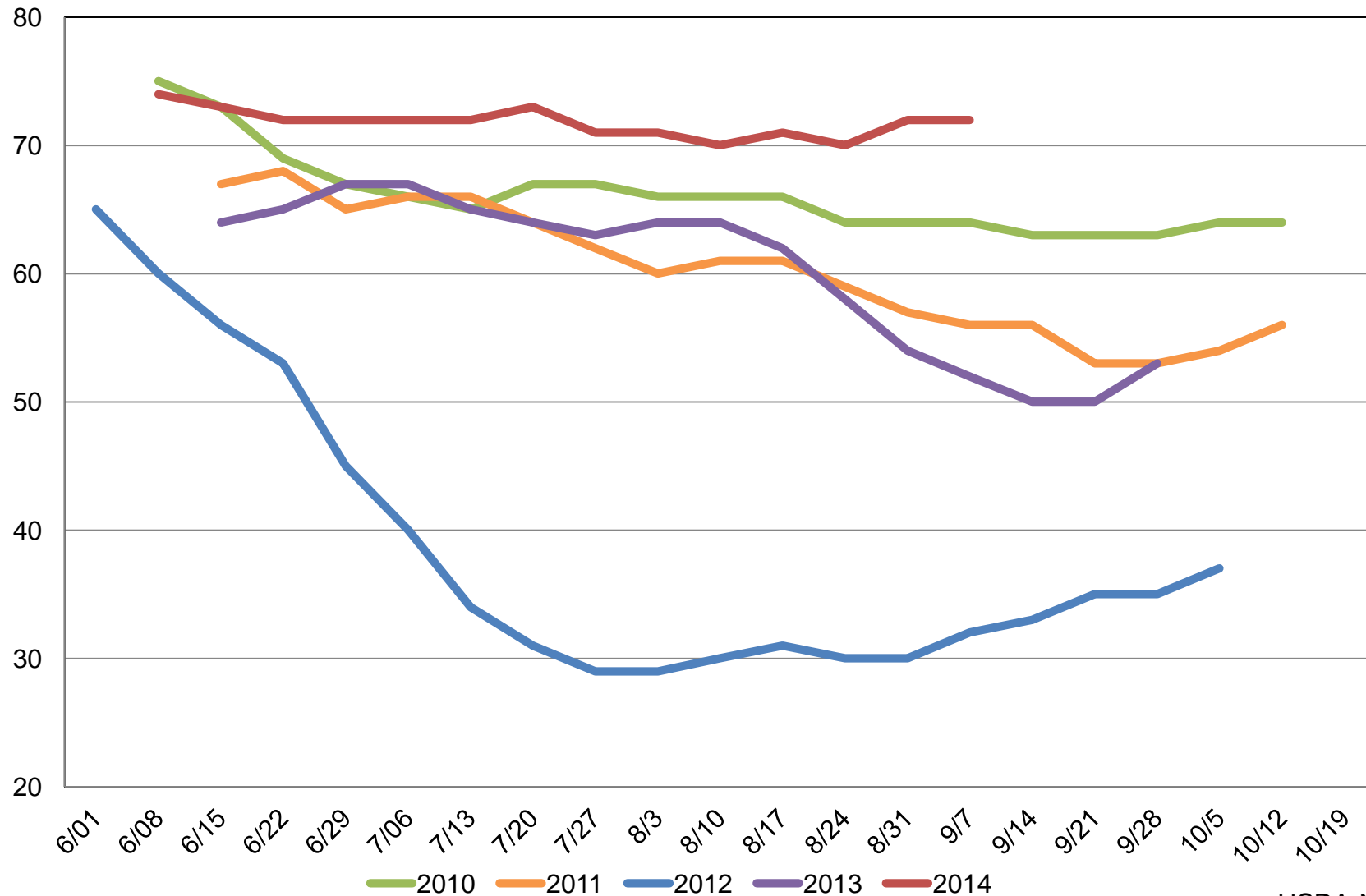




U.S. Soybean Condition

Percent Rated Good to Excellent

Percent



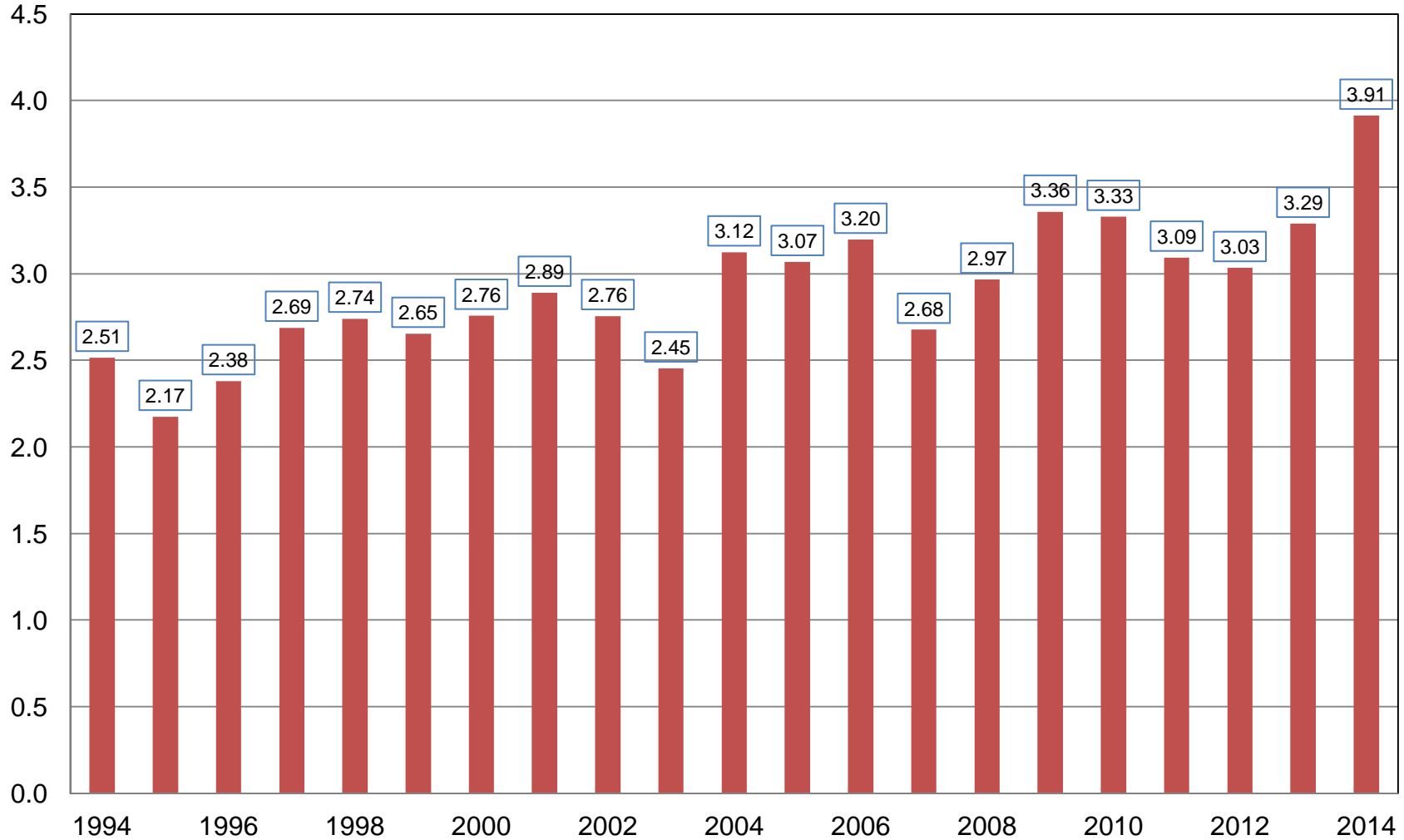


September 2014 Crop Production

Crop	Unit	September 2014	% Change From Previous Forecast	% Change From Previous Season
Soybeans				
Harvested	Mil Ac	84.1	NC	+10.8
Yield	Bu/Ac	46.6	+2.6	+7.6
Production	Bil Bu	3.91	+2.6	+19.0

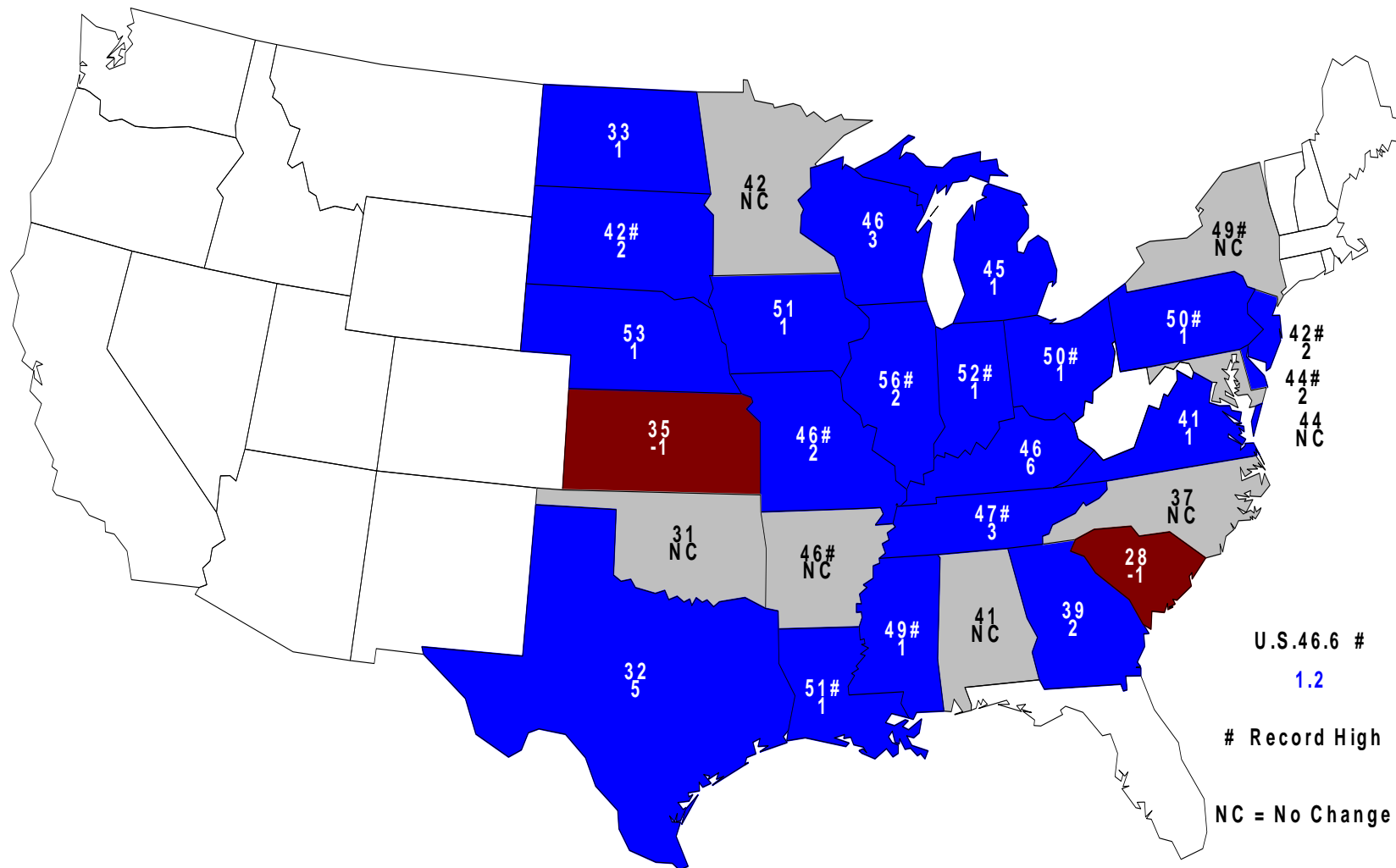
Soybean Production United States

Billion Bushels



September 1, 2014 Soybean Yield

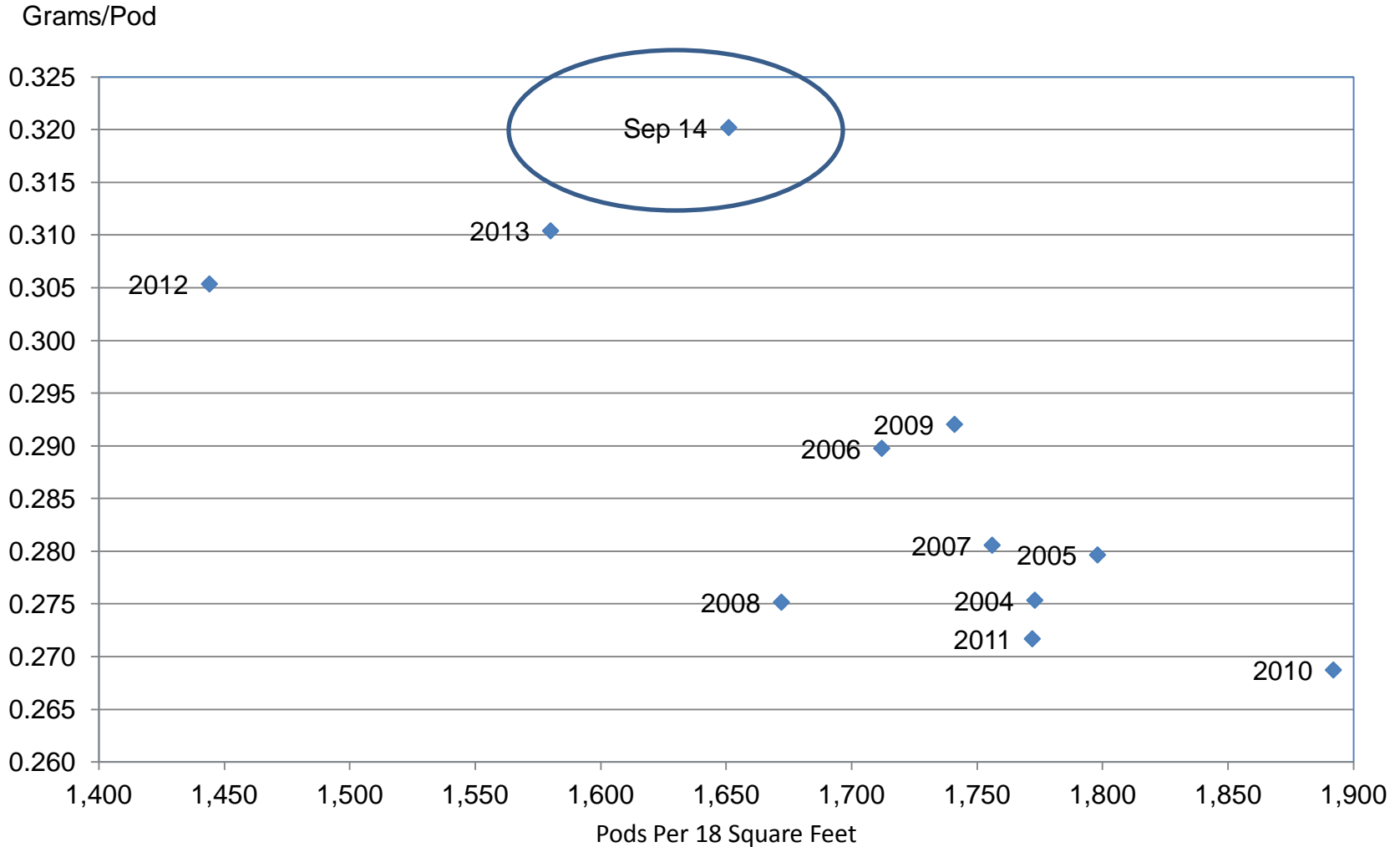
Bushels and Change From Previous Month





Soybean Objective Yield Region

Pods Per 18 Square Feet vs. Implied Pod Weight



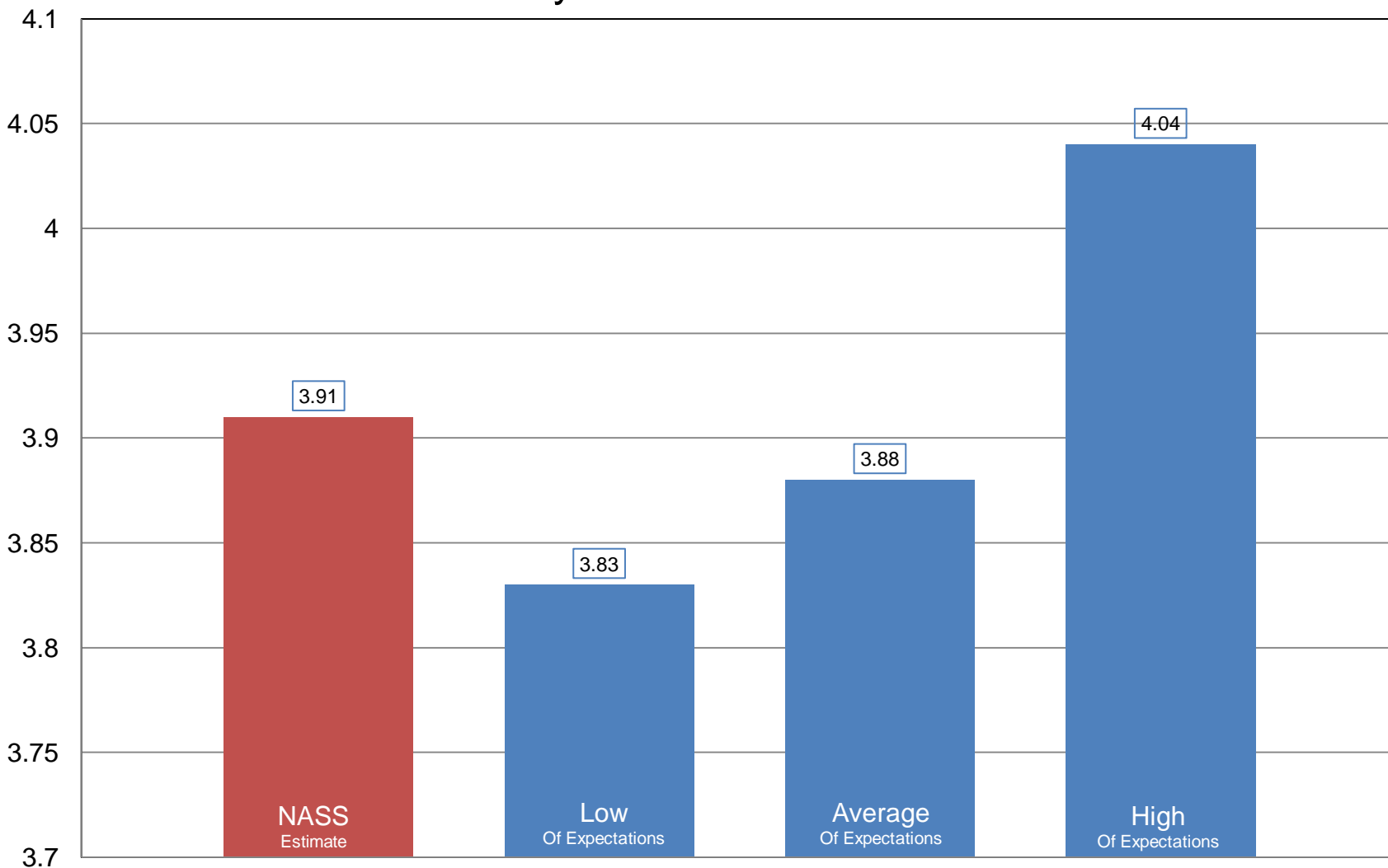
$$\text{Implied Pod Weight} = (\text{Published Yield} / \text{Pods}) / 0.0889$$



NASS Estimate vs. Expectations

Soybean Production

Billion Bushels

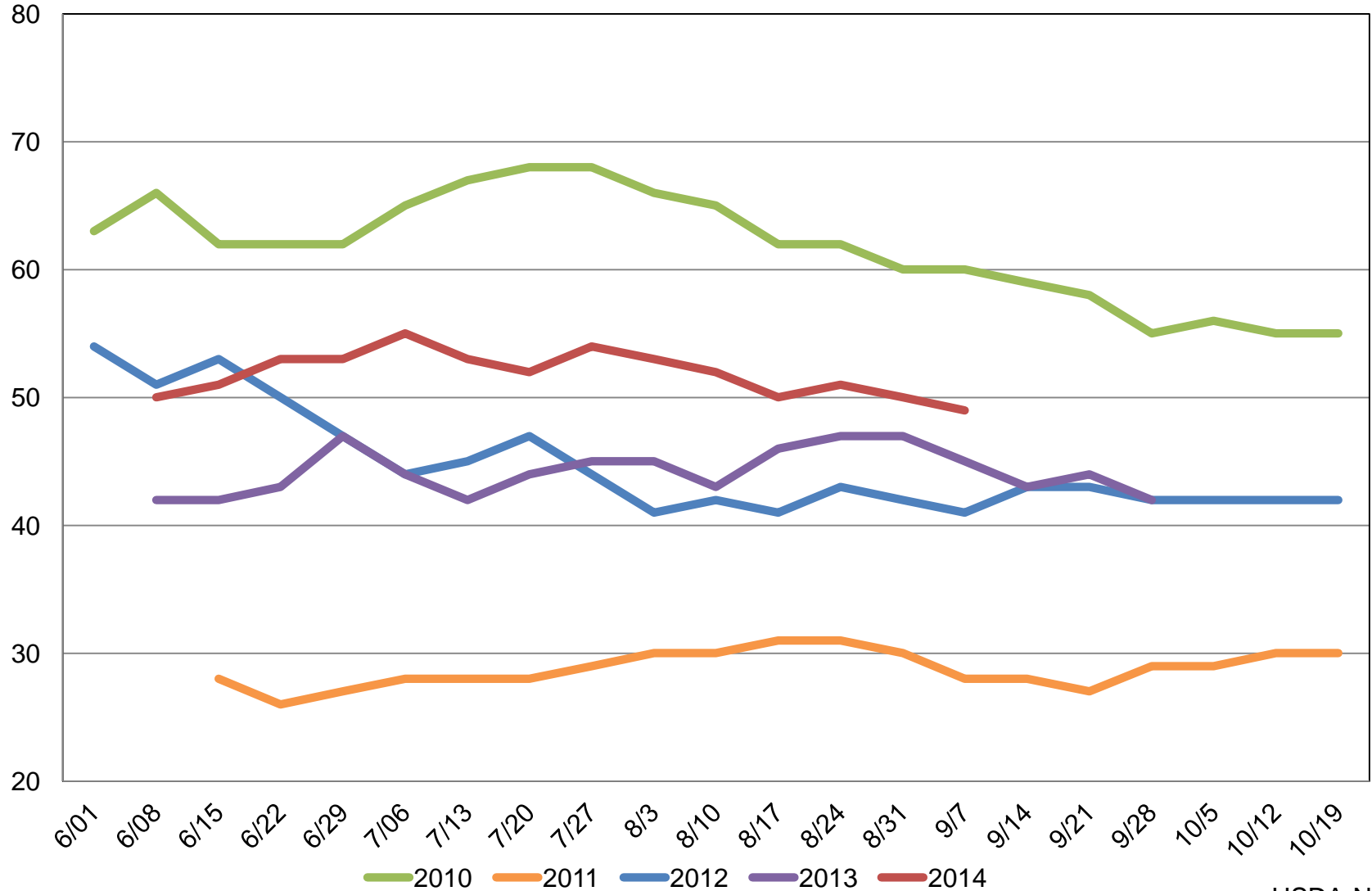




U.S. Cotton Condition

Percent Rated Good to Excellent

Percent



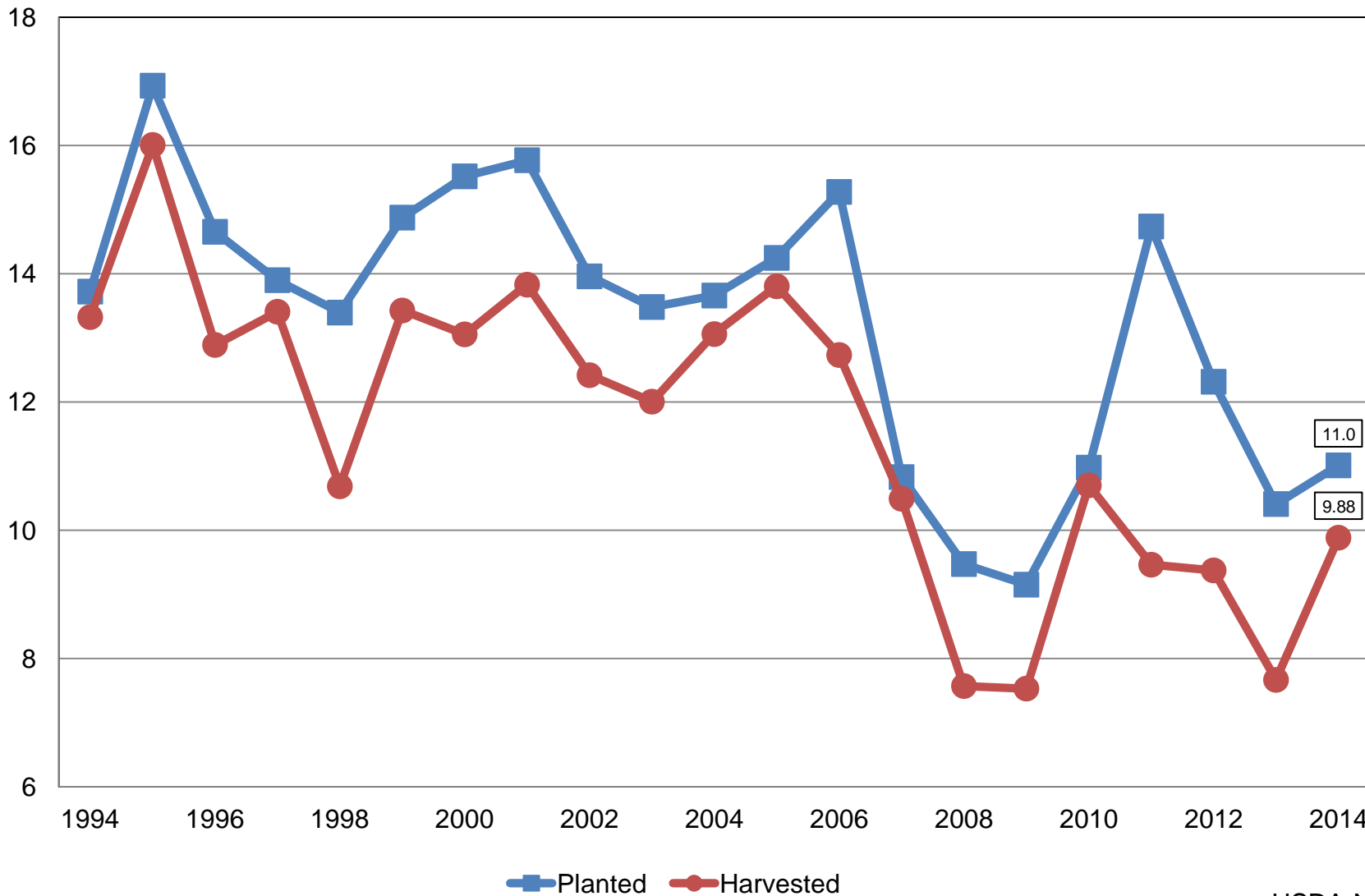


September 2014 Crop Production

Crop	Unit	September 2014	% Change From Previous Forecast	% Change From Previous Season
Cotton				
Planted	Mil Ac	11.0	-3.2	+5.8
Harvested	Mil Ac	9.88	-3.5	+31.0
Yield	Lbs/Ac	803	-2.1	-2.2
Production	Mil Bales	16.5	-5.5	+28.1

All Cotton Acres United States

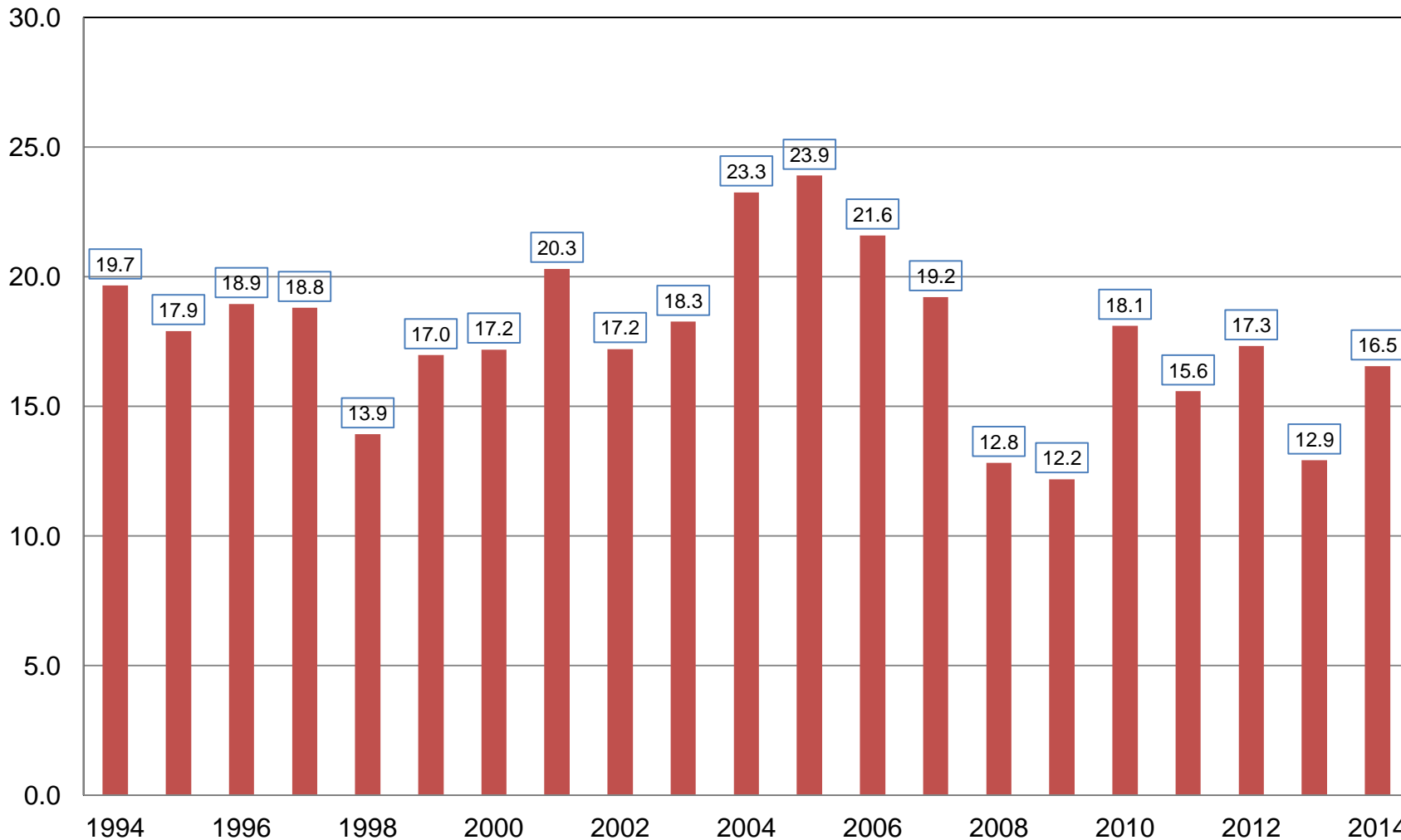
Million Acres





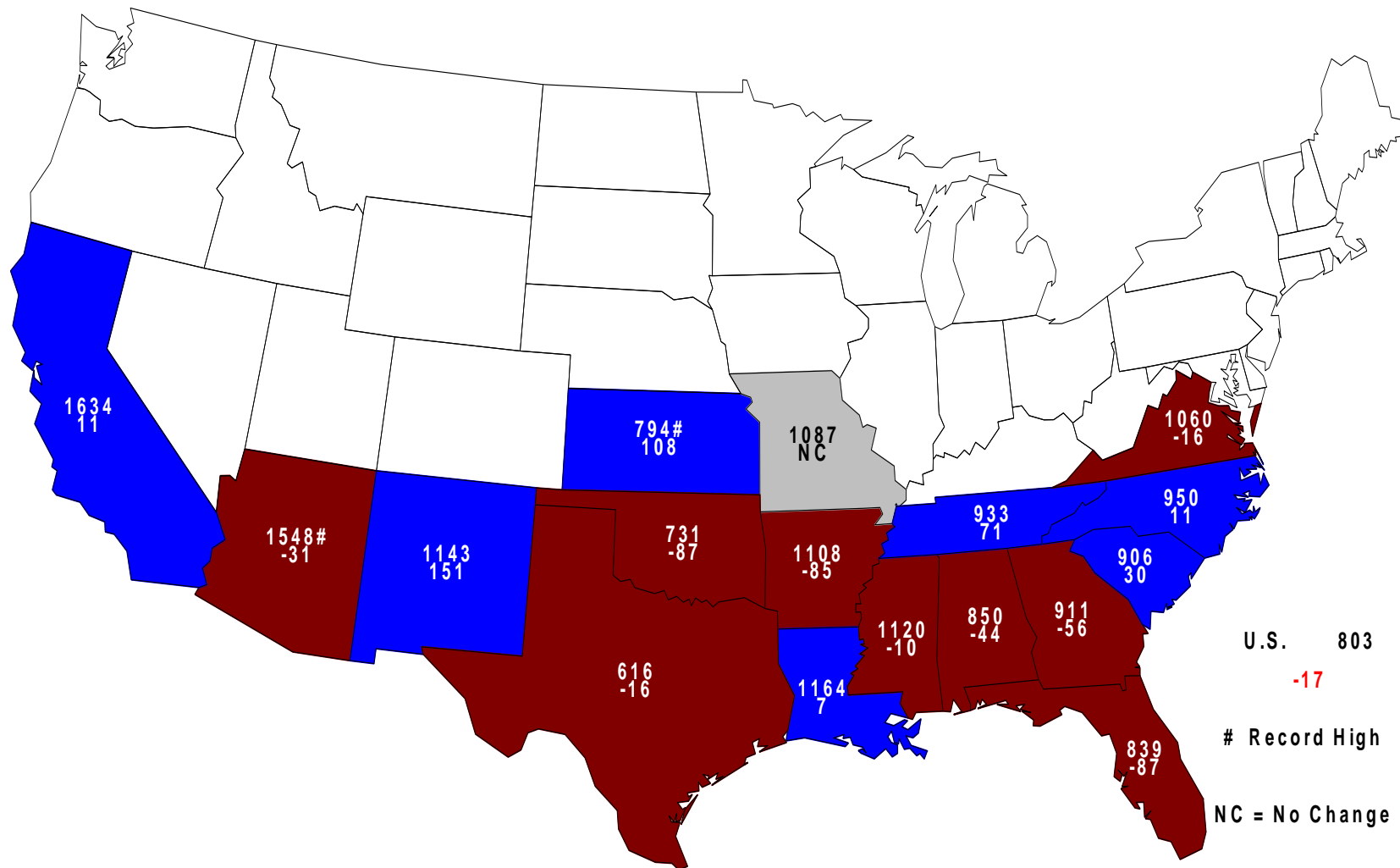
All Cotton Production United States

Million Bales



September 1, 2014 All Cotton Yield

Pounds and Change From Previous Month



U.S. 803

-17

Record High

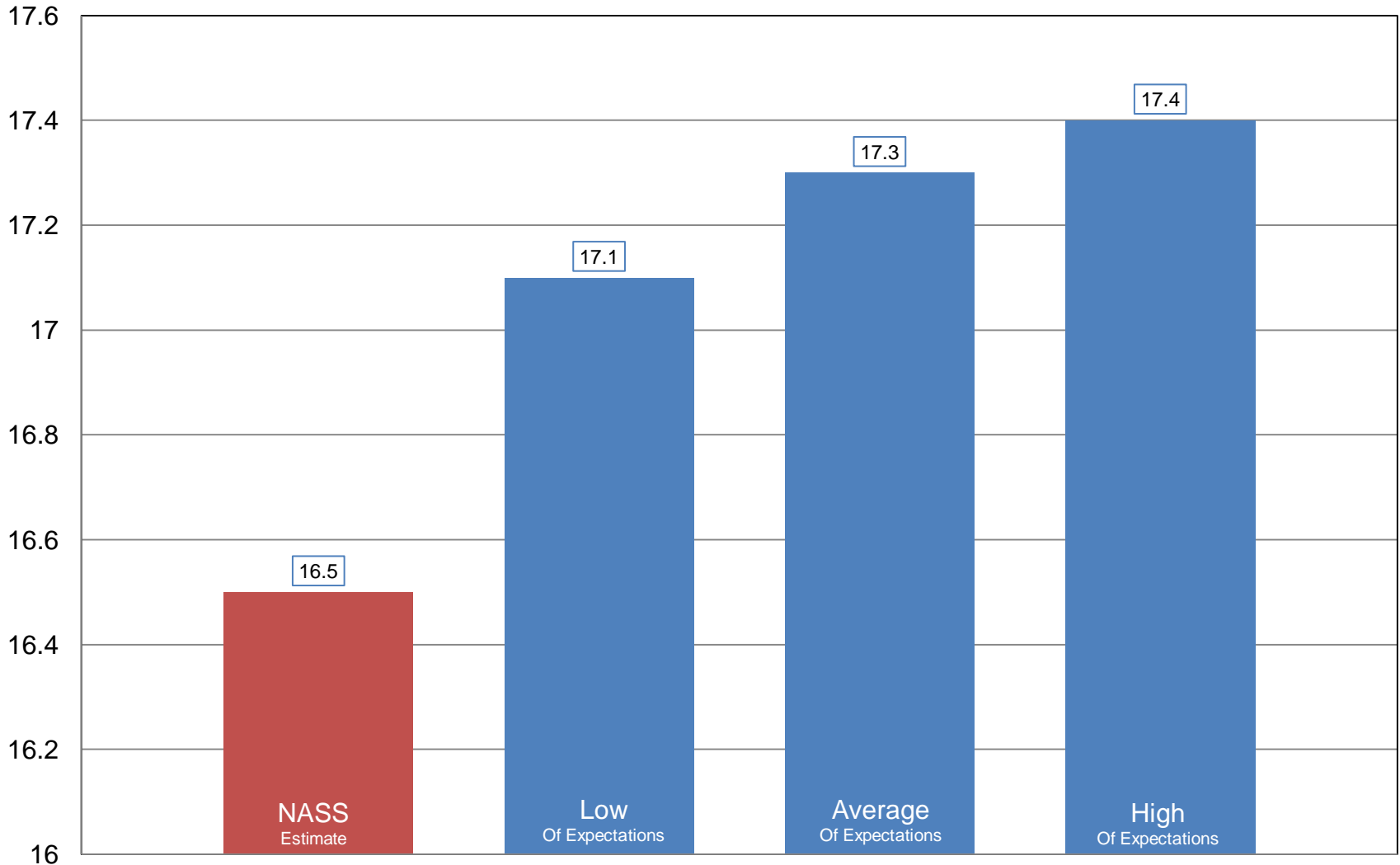
NC = No Change



NASS Estimate vs. Expectations

Cotton Production

Million Bales





September 2014 Crop Production

Crop	Unit	September 2014	% Change From Previous Forecast	% Change From Previous Season
Rice				
Planted	Mil Ac	2.93	-3.8	+17.8
Harvested	Mil Ac	2.91	-3.8	+17.9
Yield	Lbs/Ac	7,501	-0.8	-2.5
Production	Mil Cwt	218	-4.6	+14.9



September 2014 Crop Production

Crop	Unit	September 2014	% Change From Previous Forecast	% Change From Previous Season
Peanuts				
Planted	Mil Ac	1.34	+2.1	+25.8
Harvested	Mil Ac	1.31	+2.1	+25.4
Yield	Lbs/Ac	3,800	-4.1	-5.1
Production	Bil Lbs	4.97	-2.1	+19.0



September 2014 Crop Production

Crop	Unit	September 2014	% Change From Previous Forecast	% Change From Previous Season
Sorghum	Mil Bu	430	+0.2	+10.6
All Tobacco	Mil Lbs	829	+2.5	+14.6
Sugarbeets	Mil Tons	31.5	+4.6	-3.9
Sugarcane	Mil Tons	29.4	-0.1	-4.5



September 2014 Crop Production

Crop	Unit	September 2014	% Change From Previous Forecast	% Change From Previous Season
Navel Oranges (CA)	Mil Tons	1.62	---	-3.6
Hazelnuts (OR)	Thou Tons	36.0	---	-20.0
Walnuts (CA)	Thou Tons	545	---	+10.8



Upcoming Reports

Release Date	Report Title
September 18	Citrus Fruits Potatoes
September 19	Cattle on Feed
September 26	Hogs & Pigs
September 29	Ag Prices
September 30	Grain Stocks Small Grain Summary
October 10	Crop Production



United States Department of Agriculture
National Agricultural Statistics Service

All Reports Available At
www.nass.usda.gov

For Questions
202-720-2127
800-727-9540
nass@nass.usda.gov