



United States Department of Agriculture
National Agricultural Statistics Service

Crop Production - Annual
Grain Stocks
Rice Stocks
Cotton Ginnings
Winter Wheat Seedings
January Crop Production
Executive Summary

Lance Honig, Chief
Crops Branch



Contents

Field Crops	Stocks	Fruit & Nuts	Specialty Crops
Corn	Corn	Citrus	Potatoes
Soybeans	Soybeans		Sweet Potatoes
All Cotton	Sorghum		Peppermint Oil
Sorghum	Rice		Spearmint Oil
Rice	Hay		Taro (Hawaii)
Hay & Forge	All Wheat		Hops
Peanuts	Barley		
Proso Millet	Oats		
Minor Oil			
Sugarcane			
Sugarbeets			
Tobacco			
Pulse Crops			
Winter Wheat			



Survey Overview

	December Ag Survey
Survey Type	Farmer Reported
Collection Method	Mail, Phone, Internet, Personal Interview
Crops Included	Field Crops
States	All except HI
Sample Size	83,139
Collection Period	Nov 29 – Dec 19



Principal Crops Planted Acreage

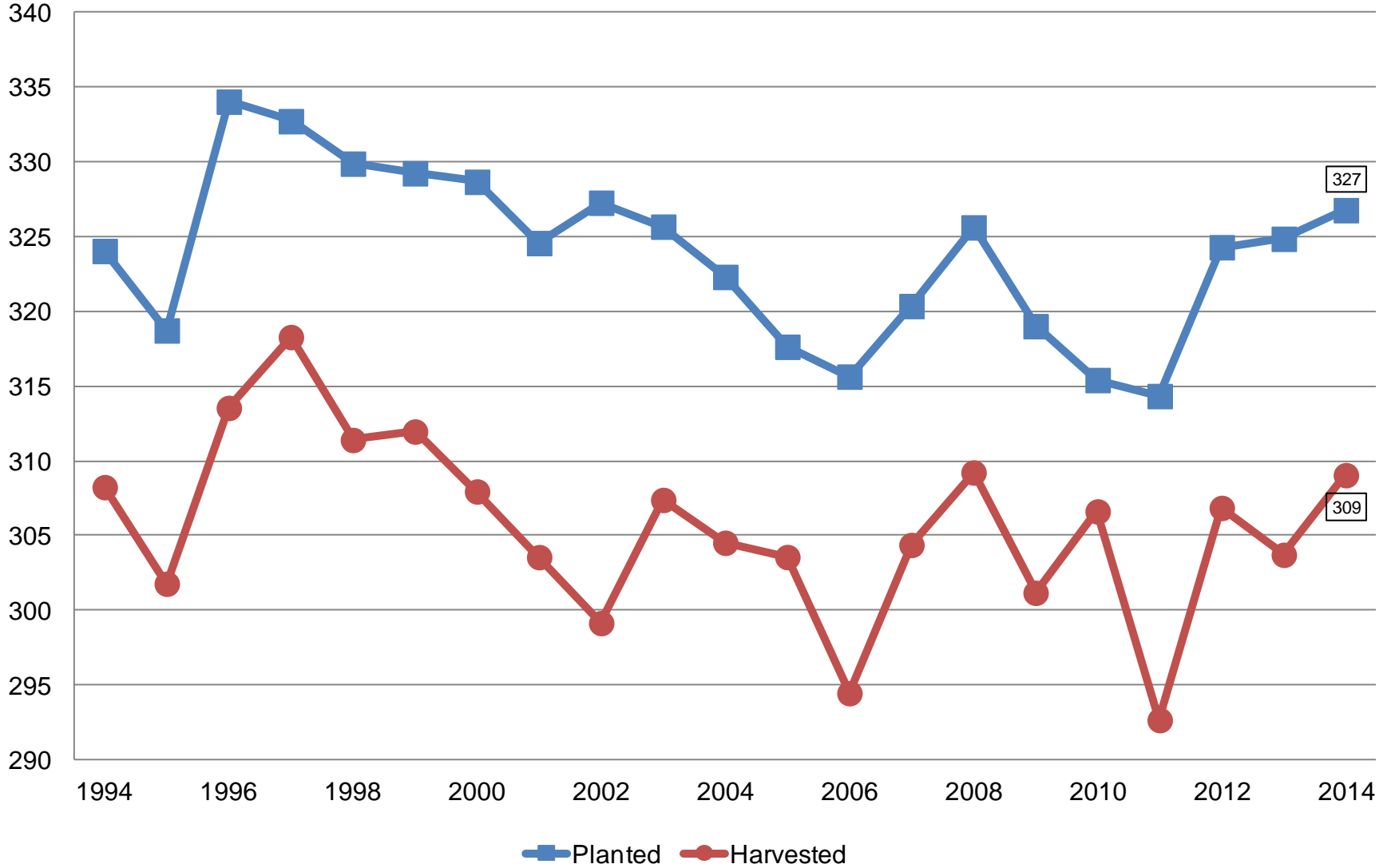
United States

Year	Principal Crops	Change From Previous Year
	<i>Million Acres</i>	
2005	317.6	-4.7
2006	315.6	-2.0
2007	320.4	+4.7
2008	325.6	+5.3
2009	319.0	-6.6
2010	315.4	-3.6
2011	314.3	-1.1
2012	324.3	+10.0
2013	324.9	+0.6
2014	326.8	+1.9



Principal Crops United States

Million Acres





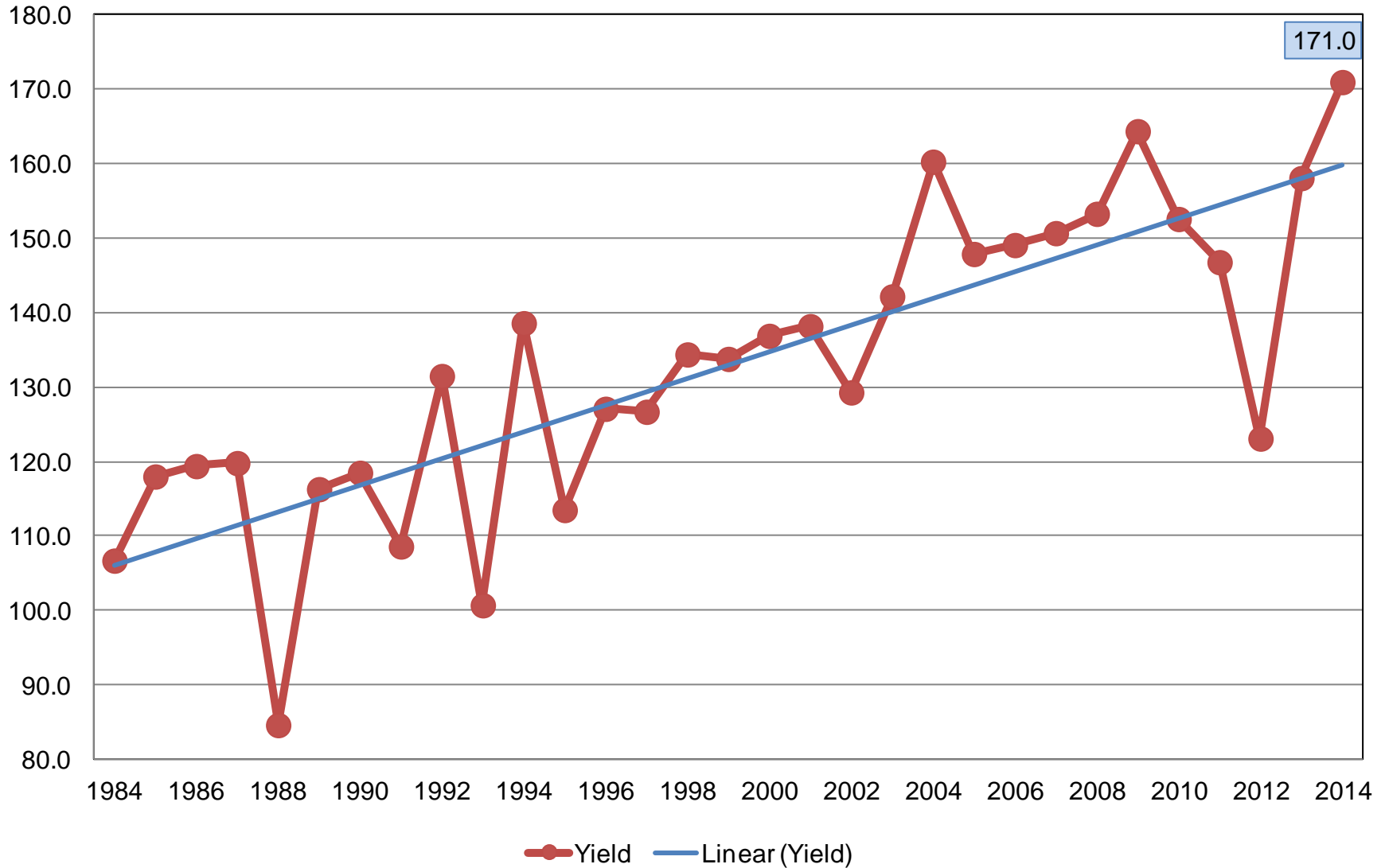
2014 Crop Production – Annual

Crop	Unit	January 2015	% Change From Previous Forecast	% Change From Previous Season
Corn				
Planted	Mil Ac	90.6	-0.3	-5.0
Harvested	Mil Ac	83.1	+<0.1	-4.9
Yield	Bu/Ac	171	-1.4	+8.2
Production	Bil Bu	14.2	-1.3	+2.8
Stocks	Bil Bu	11.2	NA	+7.2

Corn for Grain Yield

United States

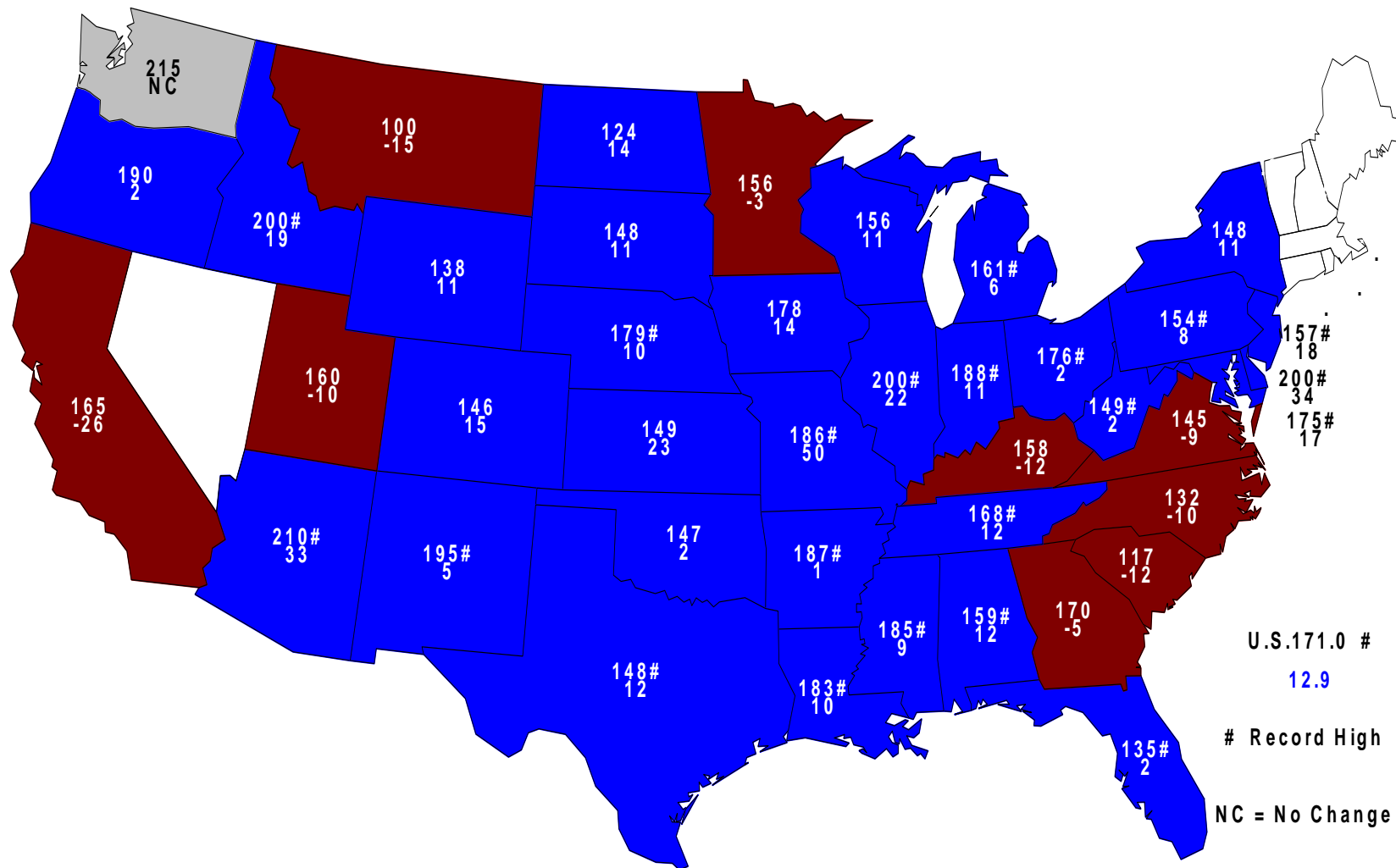
Bushels per Acre





2014 Corn Yield

Bushels and Change From Previous Year



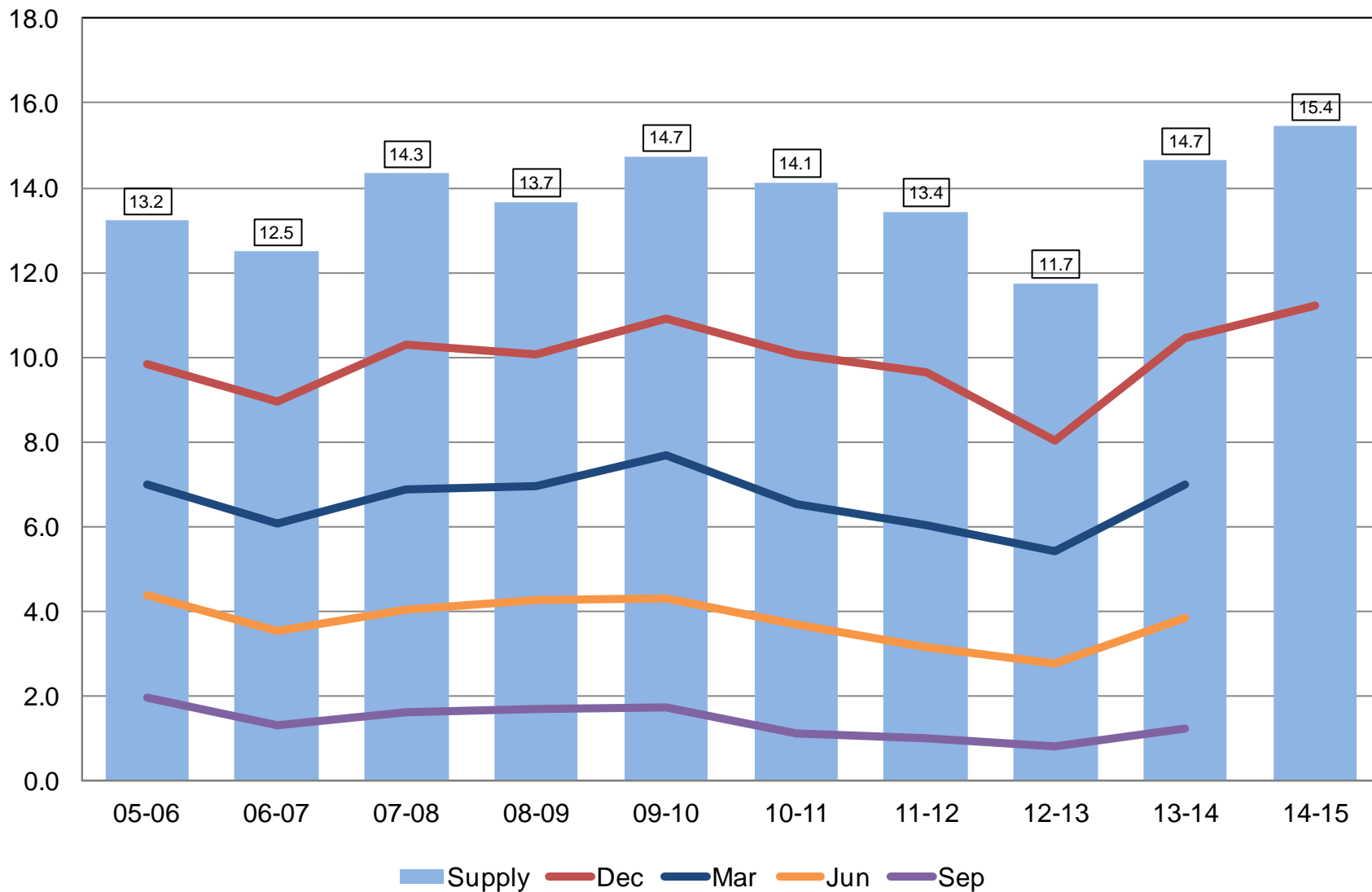
U.S. 171.0 #
12.9

Record High

NC = No Change

Corn Stocks United States

Billion Bushels



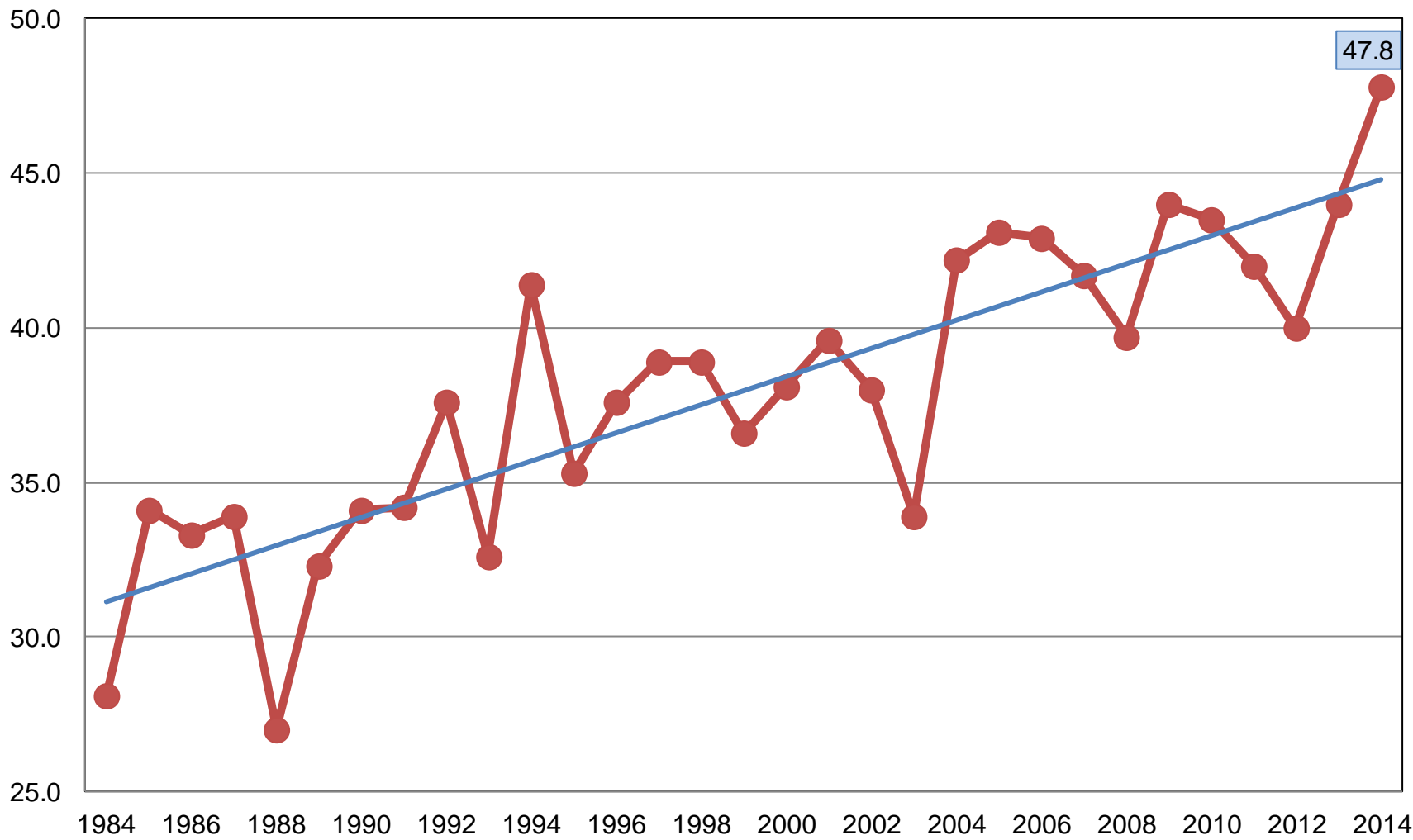


2014 Crop Production – Annual

Crop	Unit	January 2015	% Change From Previous Forecast	% Change From Previous Season
Soybeans				
Planted	Mil Ac	83.7	-0.6	+8.9
Harvested	Mil Ac	83.1	-0.4	+8.9
Yield	Bu/Ac	47.8	+0.6	+8.6
Production	Bil Bu	3.97	+0.3	+18.2
Stocks	Bil Bu	2.52	NA	+17.2

Soybean Yield United States

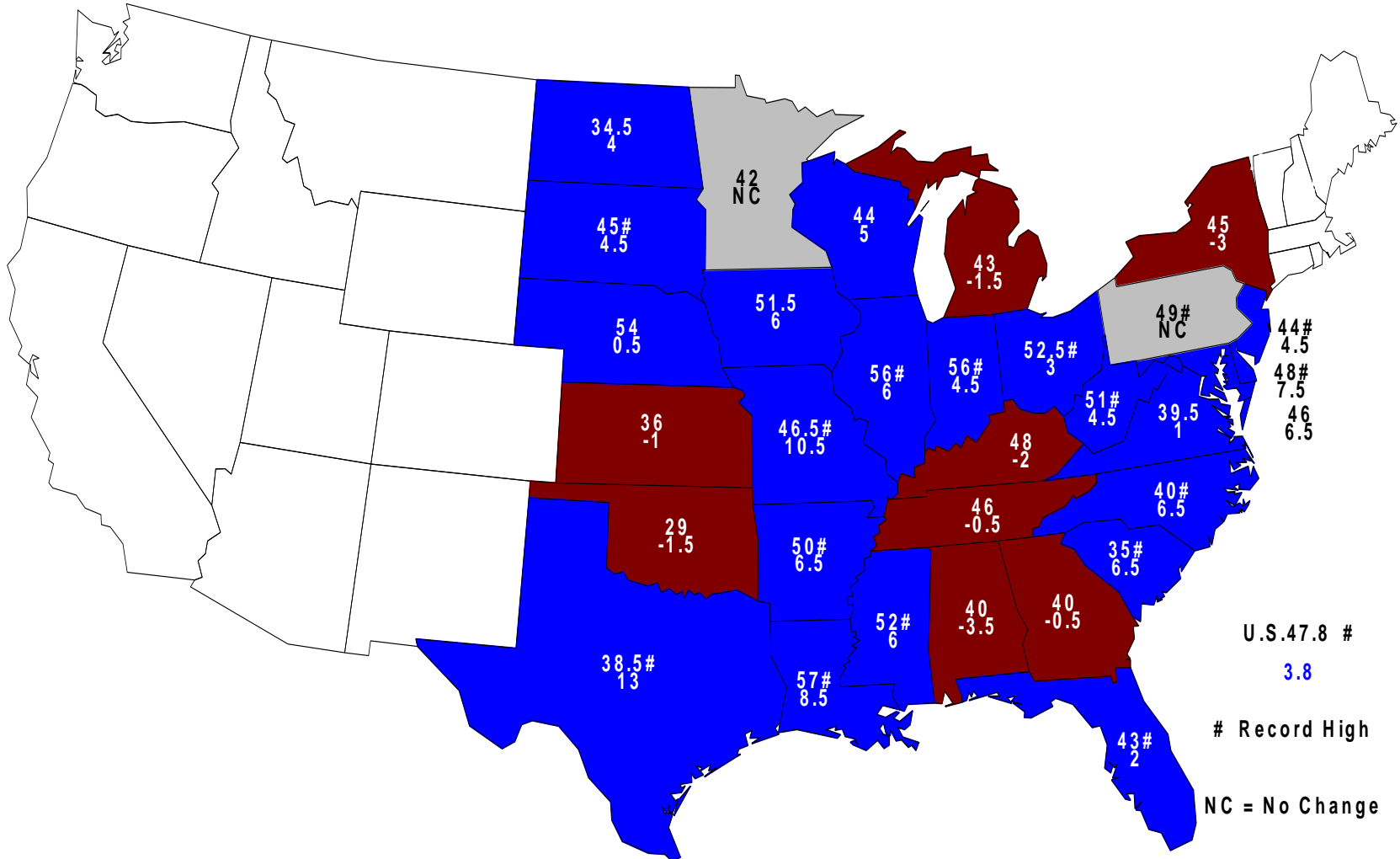
Bushels per Acre



● Yield — Linear (Yield)

2014 Soybean Yield

Bushels and Change From Previous Year

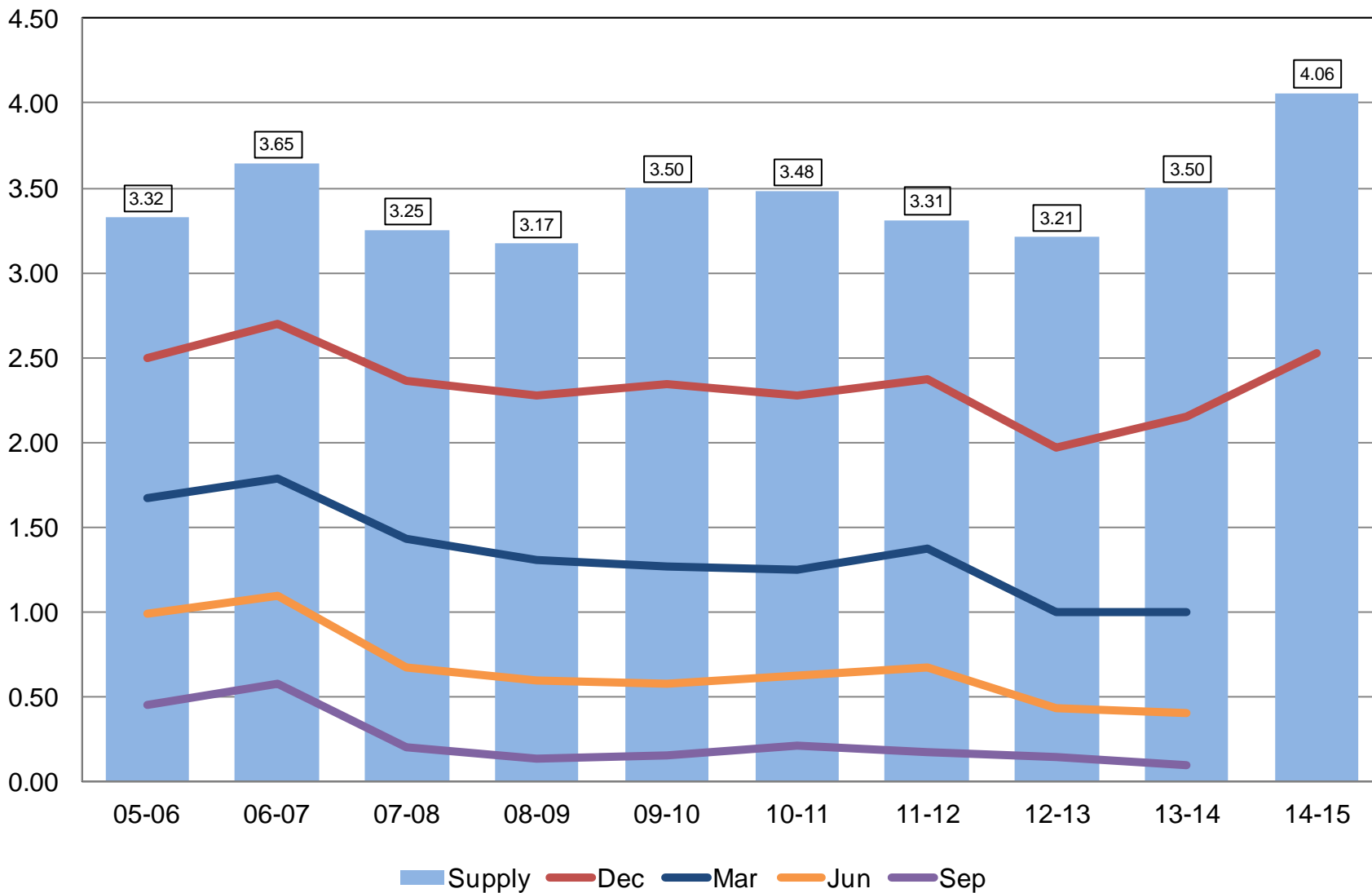


U.S. 47.8 #
3.8
Record High
NC = No Change



Soybean Stocks United States

Billion Bushels



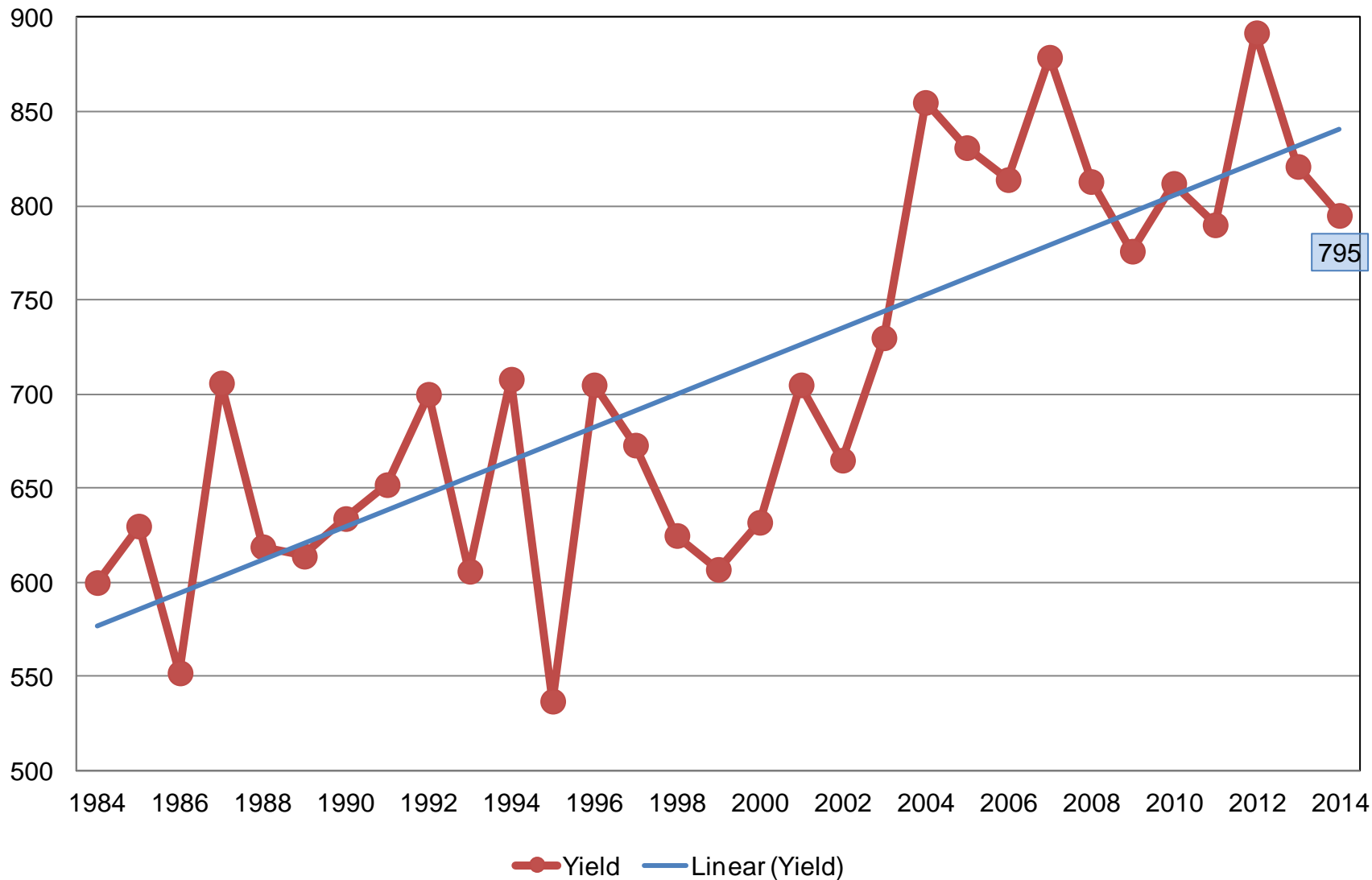


2014 Crop Production – Annual

Crop	Unit	January 2015	% Change From Previous Forecast	% Change From Previous Season
All Cotton				
Planted	Mil Ac	11.0	+0.2	+6.1
Harvested	Mil Ac	9.71	-1.8	+28.7
Yield	Lb/Ac	795	+2.8	-3.2
Production	Mil Bls	16.1	+1.0	+24.6

All Cotton Yield United States

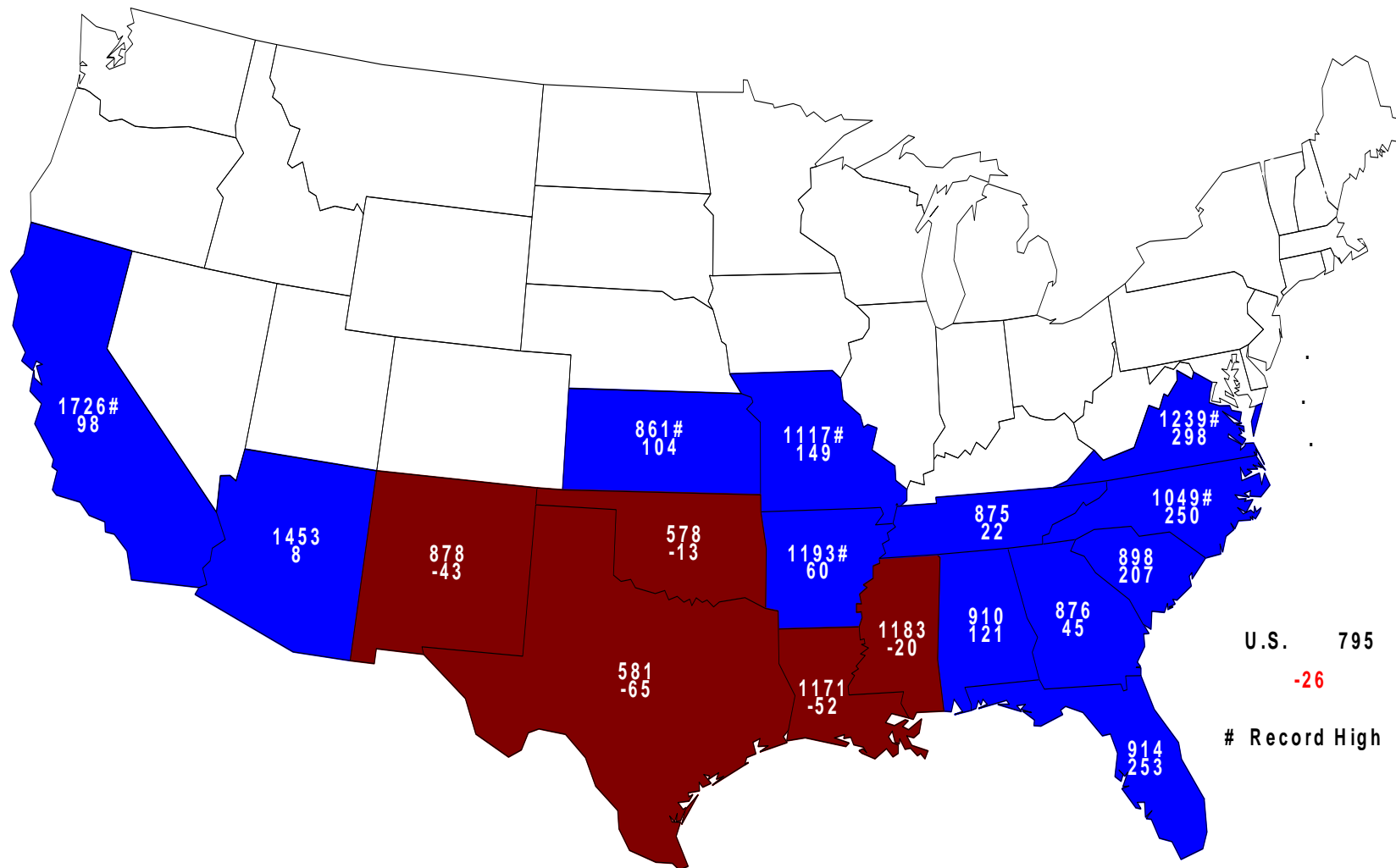
Pounds per Acre





2014 All Cotton Yield

Pounds and Change From Previous Year





2014 Crop Production – Annual

Crop	Unit	January 2015	% Change From Previous Forecast	% Change From Previous Season
Sorghum				
Planted	Mil Ac	7.14	-1.0	-11.6
Harvested	Mil Ac	6.40	+3.7	-2.8
Yield	Bu/Ac	67.6	+2.3	+13.4
Production	Mil Bu	433	+6.0	+10.3
Stocks	Mil Bu	229	NA	-1.0



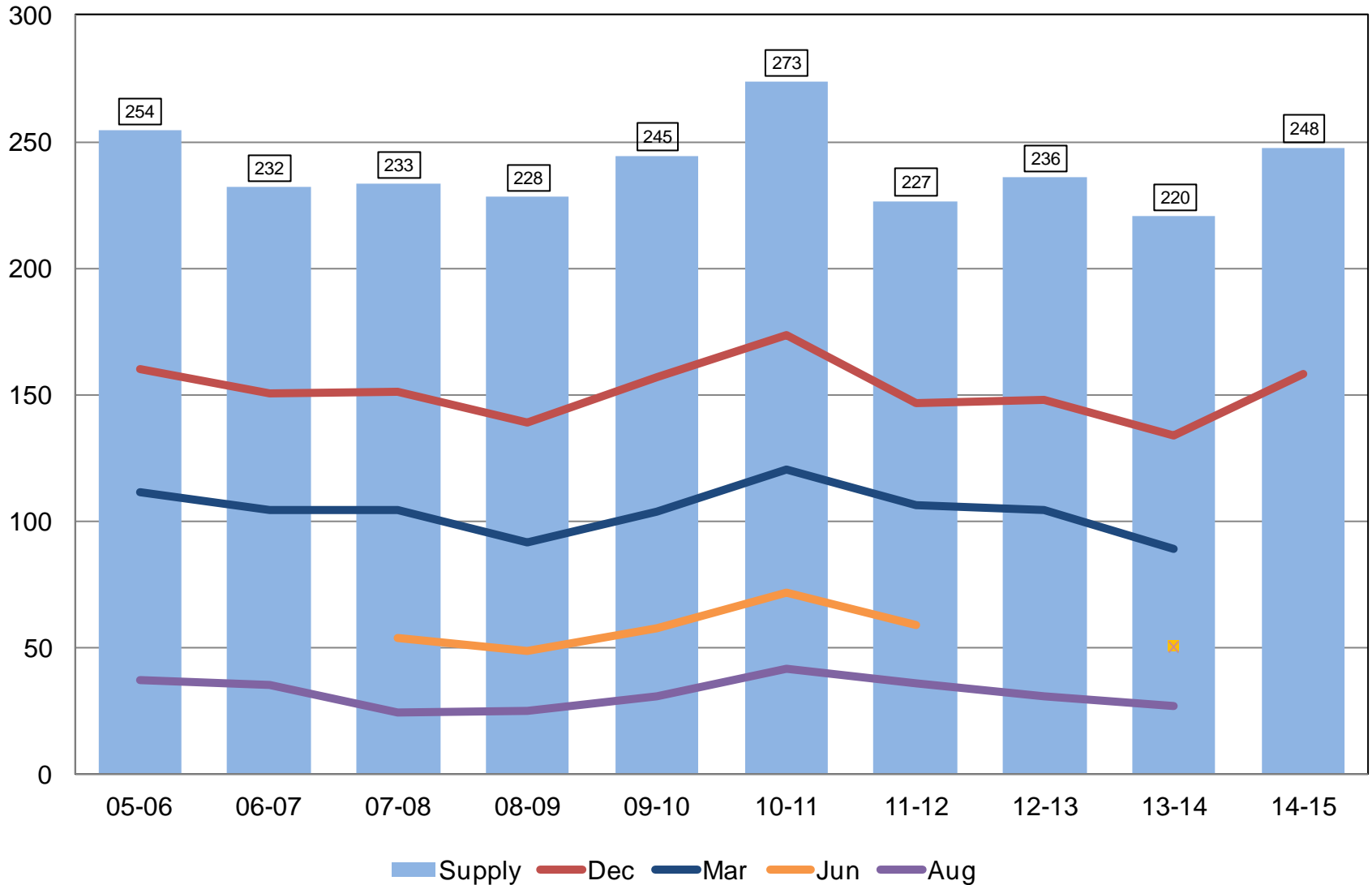
2014 Crop Production – Annual

Crop	Unit	January 2015	% Change From Previous Forecast	% Change From Previous Season
Rice				
Planted	Mil Ac	2.94	+0.3	+18.0
Harvested	Mil Ac	2.92	+0.3	+18.2
Yield	Lbs/Ac	7,572	-0.3	-1.6
Production	Mil Cwt	221	-<0.1	+16.4
Stocks	Mil Cwt	158	NA	+18.2



Rough Rice Stocks United States

Million Hundredweight



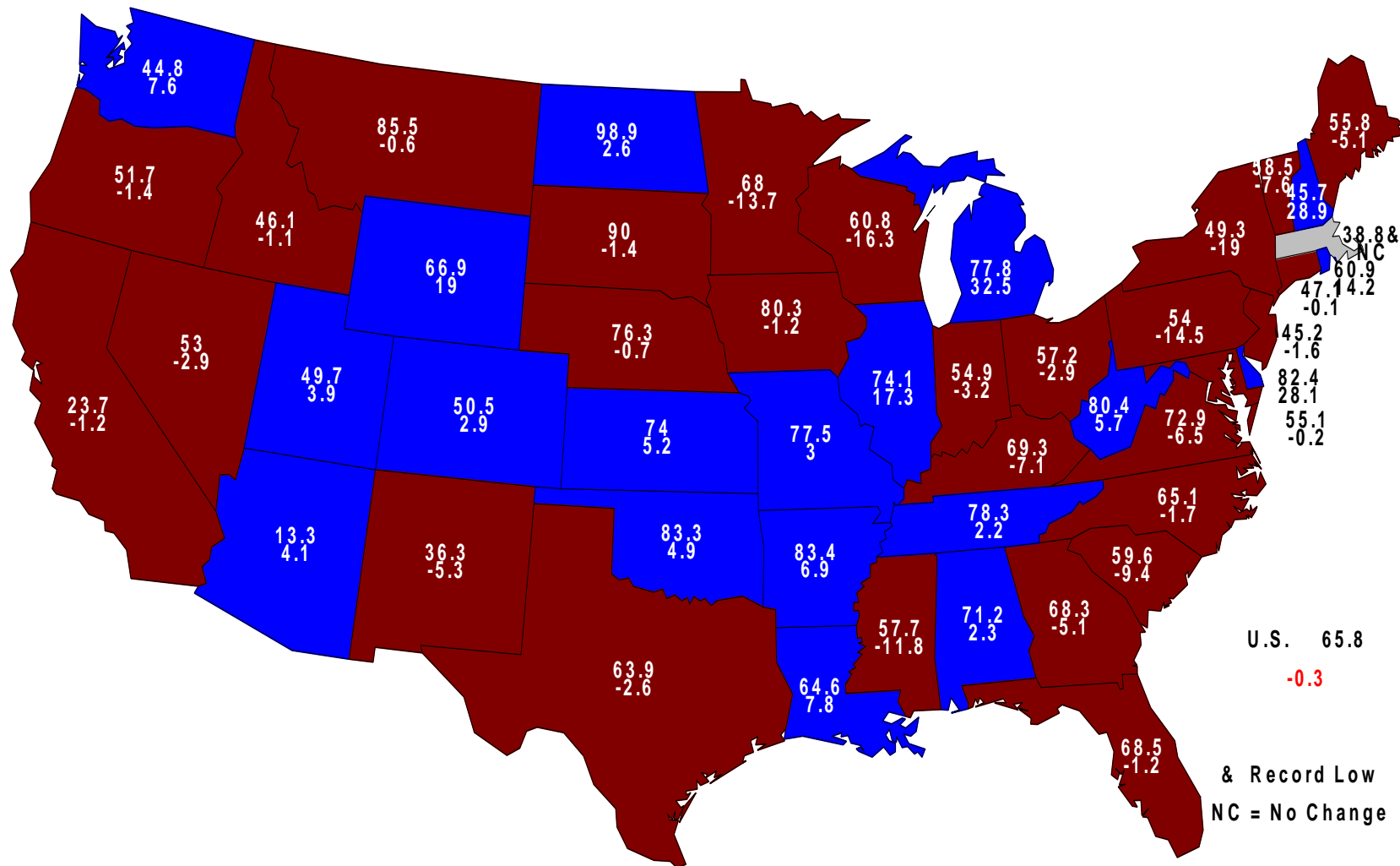


2014 Crop Production – Annual

Crop	Unit	January 2015	% Change From Previous Forecast	% Change From Previous Season
All Hay				
Harvested	Mil Ac	57.1	-1.0	-1.4
Yield	Tons/Ac	2.45	-5.0	+5.2
Production	Mil Tons	140	-6.0	+3.6
Stocks	Mil Tons	92.1	NA	+3.1

December 1, 2014 Hay Stocks/Production

Percent and Change From Previous Year



U.S. 65.8
-0.3

& Record Low
NC = No Change



2014 Crop Production – Annual

Crop	Unit	January 2015	% Change From Previous Forecast	% Change From Previous Season
Production				
All Other Hay	Mil Tons	78.4	-6.9	+0.7
Alfalfa Hay	Mil Tons	61.4	-4.8	+7.4
Proso Millet	Mil Bu	13.5	NA	-26.9
Peanuts	Bil Lbs	5.21	+3.3	+24.8



2014 Crop Production – Annual

Crop	Unit	January 2015	% Change From Previous Forecast	% Change From Previous Season
Production				
Canola	Bil Lbs	2.51	-0.4	+13.6
Cottonseed	Mil Tons	5.31	+1.1	+26.4
Flaxseed	Mil Bu	6.37	NA	+89.7
Mustard Seed	Mil Lbs	29.0	NA	-21.0
Rapeseed	Mil Lbs	2.59	NA	+33.5
Safflower	Mil Lbs	209	NA	-0.8
Sunflowers	Bil Lbs	2.21	-9.7	+9.5



2014 Crop Production – Annual

Crop	Unit	January 2015	% Change From Previous Forecast	% Change From Previous Season
Production				
Sugarcane	Mil Tons	30.9	-1.0	+0.4
Sugarbeets	Mil Tons	31.4	-<0.1	-4.3
All Tobacco	Mil Lbs	876	+3.3	+21.1



2014 Crop Production – Annual

Crop	Unit	January 2015	% Change From Previous Forecast	% Change From Previous Season
Production				
A. Winter Peas	Thou Cwt	225	-11.1	-1.3
Dry Peas	Mil Cwt	17.2	+2.9	+9.8
Dry Beans	Mil Cwt	29.2	+1.8	+18.8
Lentils	Mil Cwt	3.37	+3.4	-32.9
Wrinkled Seed	Thou Cwt	618	NA	+124.7



2014 Crop Production – Annual

Crop	Unit	January 2015	% Change From Previous Forecast	% Change From Previous Season
Production				
Potatoes, all	Mil Cwt	447	+0.9	+2.8
Sweet Potatoes	Mil Cwt	29.6	NA	+19.4
Peppermint Oil	Mil Lbs	5.69	NA	-6.9
Spearmint Oil	Mil Lbs	2.78	NA	-4.9
Taro (Hawaii)	Mil Lbs	3.24	NA	+4.5
Hops	Mil Lbs	71.0	NA	+2.5



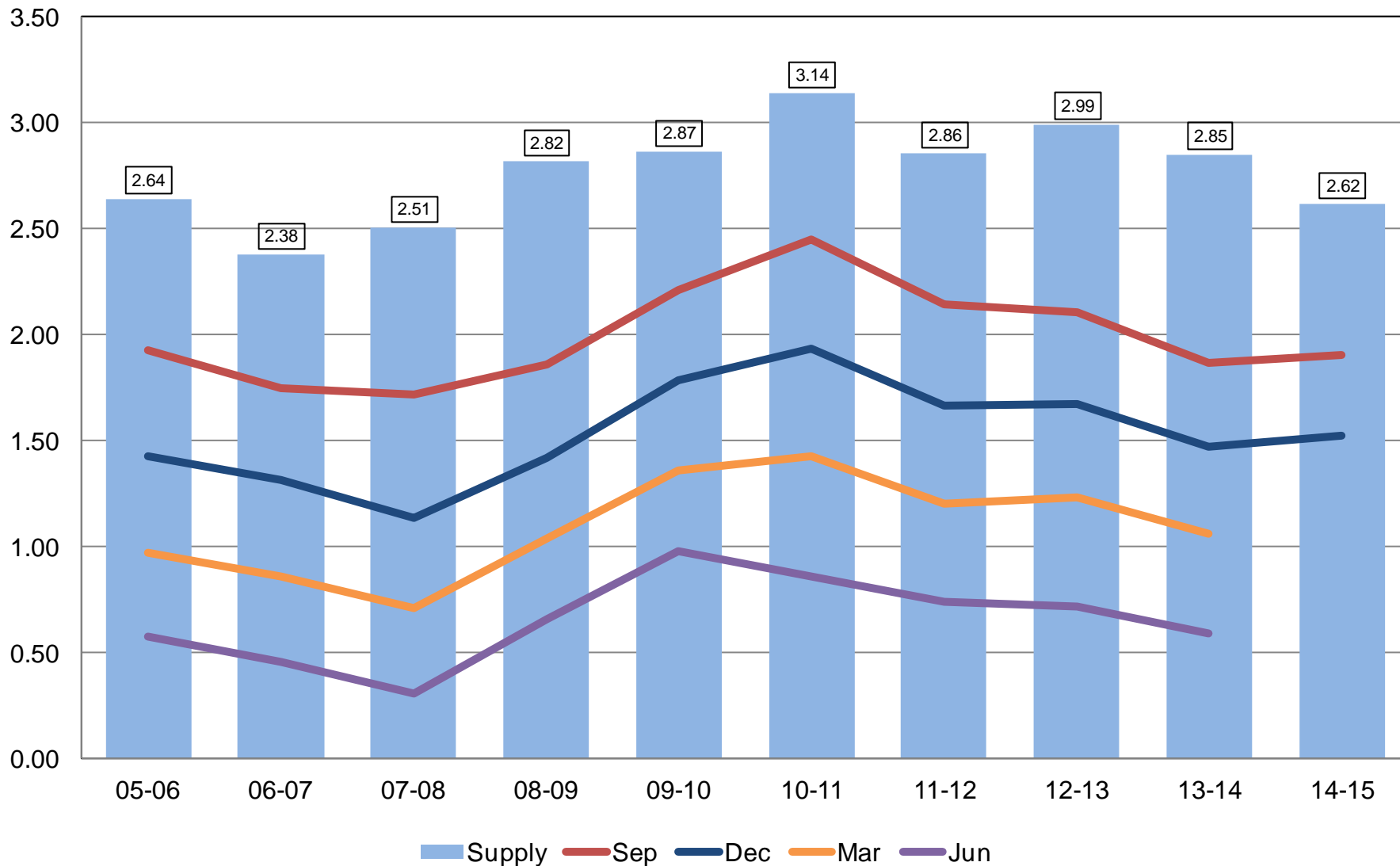
2014 Crop Production – Annual

Crop	Unit	January 2015	% Change From Previous Estimate	% Change From Previous Season
Stocks				
Wheat, All	Bil Bu	1.52	NA	+3.4
Barley	Mil Bu	158	NA	-6.9
Oats	Mil Bu	62.2	NA	+29.5



All Wheat Stocks United States

Billion Bushels





Winter Wheat Seedings

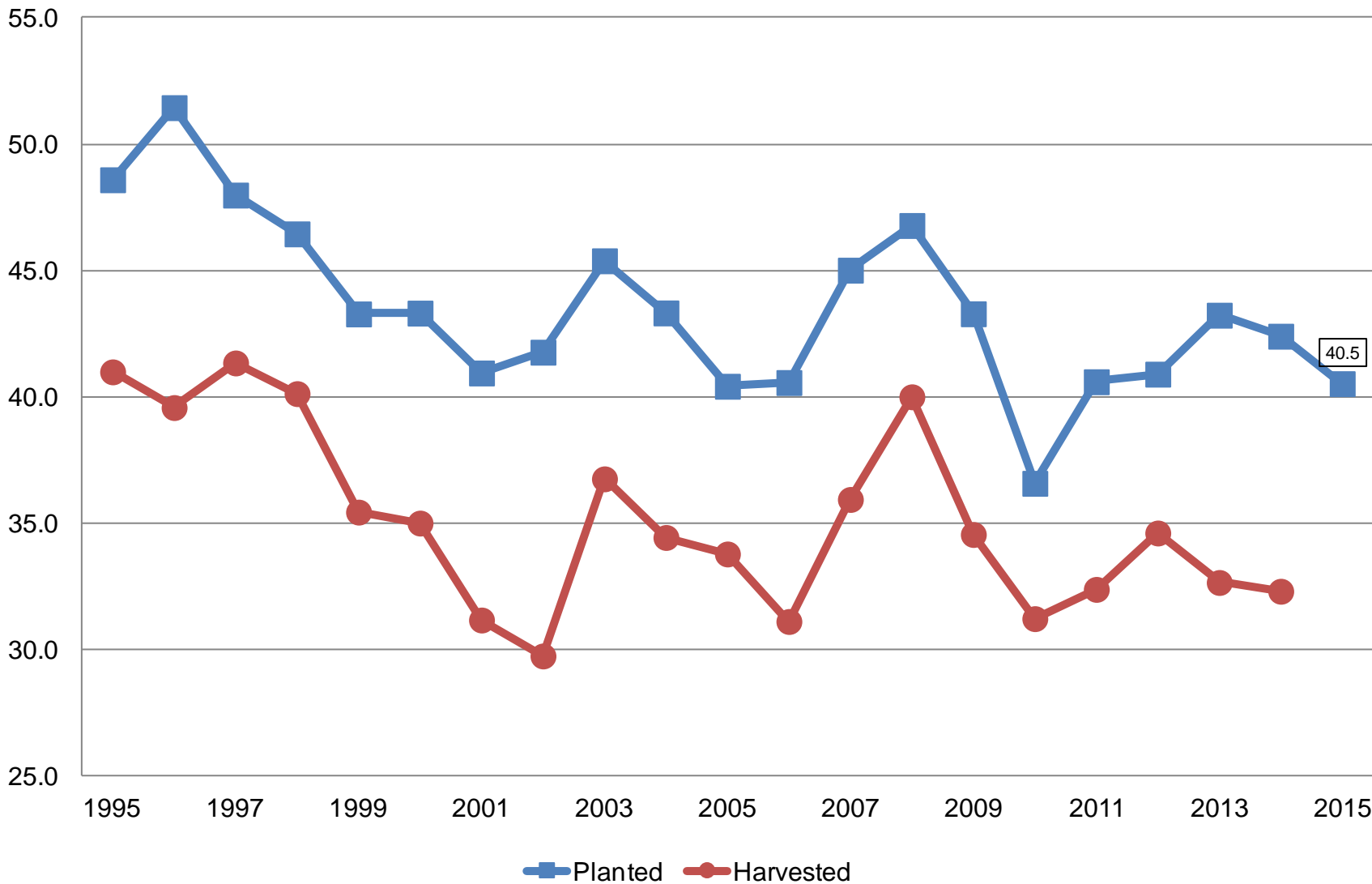
Crop	Unit	January 2015	% Change From Previous Forecast	% Change From Previous Season
Wheat, Winter Planted	Mil Ac	40.5	NA	-4.6



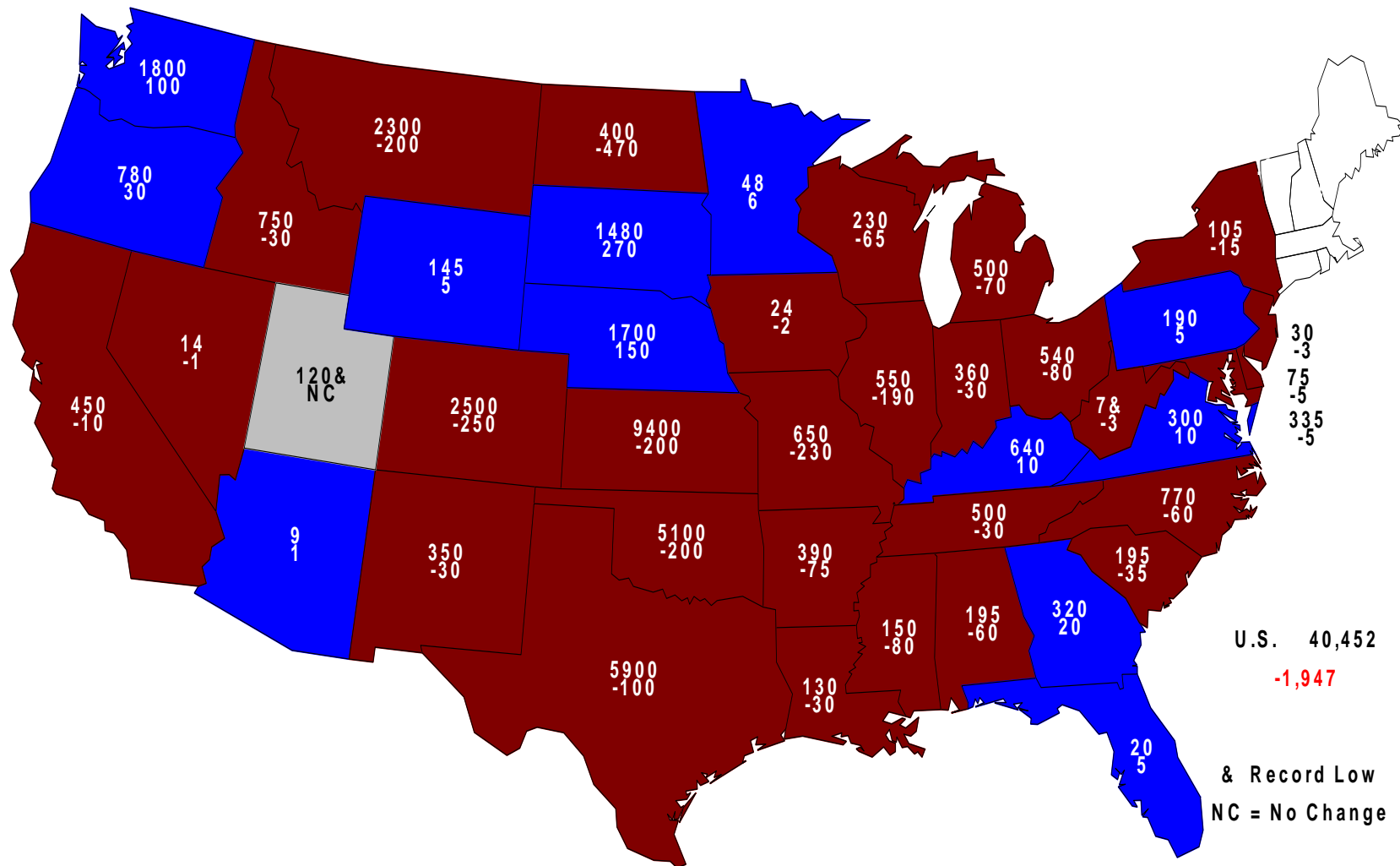
Winter Wheat Acres

United States

Million Acres



2015 Winter Wheat Planted Area (000) Acres and Change From Previous Year





Survey Overview

Florida Citrus

	Objective Surveys (Size and Drop)	Fruit Maturity	Row Count
Survey Type	Field Observations	Laboratory Tests	Field Observations
Crops Included	All except Fallglo tangerines	Oranges excl. Navels	Non-Valencia Oranges and Tangelos
Sample Size	1,695 groves	324 samples	59,992 rows
Collection Period	Dec 15-29	Dec 30-31	Dec 30-31
Test Period	--	Jan 5-6	



January 2015 Crop Production

Crop	Unit	January 2015	% Change From Previous Forecast	% Change From Previous Season
Production				
Oranges	Mil Tons	6.72	-3.5	-0.9
Grapefruit	Mil Tons	1.04	+1.0	-1.4
Lemons	Thou Tons	888	+5.7	+6.7
Tangelos	Thou Tons	36.0	NC	-10.0
Tangerines & Mandarins	Thou Tons	748	-2.6	+3.0



Upcoming Reports

Release Date	Report Title
January 23	Cotton Ginnings Cattle on Feed Noncitrus Fruits and Nut - Preliminary
January 29	Peanut Stocks and Processing Vegetables - Annual
January 30	Agricultural Prices, Cattle, and Sheep and Goats
February 10	Crop Production
February 24	Crop Values



United States Department of Agriculture
National Agricultural Statistics Service

All Reports Available At
www.nass.usda.gov

For Questions
202-720-2127
800-727-9540
nass@nass.usda.gov