



United States Department of Agriculture
National Agricultural Statistics Service

Prospective Plantings
Grain Stocks
Rice Stocks

Executive Summary

Lance Honig, Chief
Crops Branch



Contents

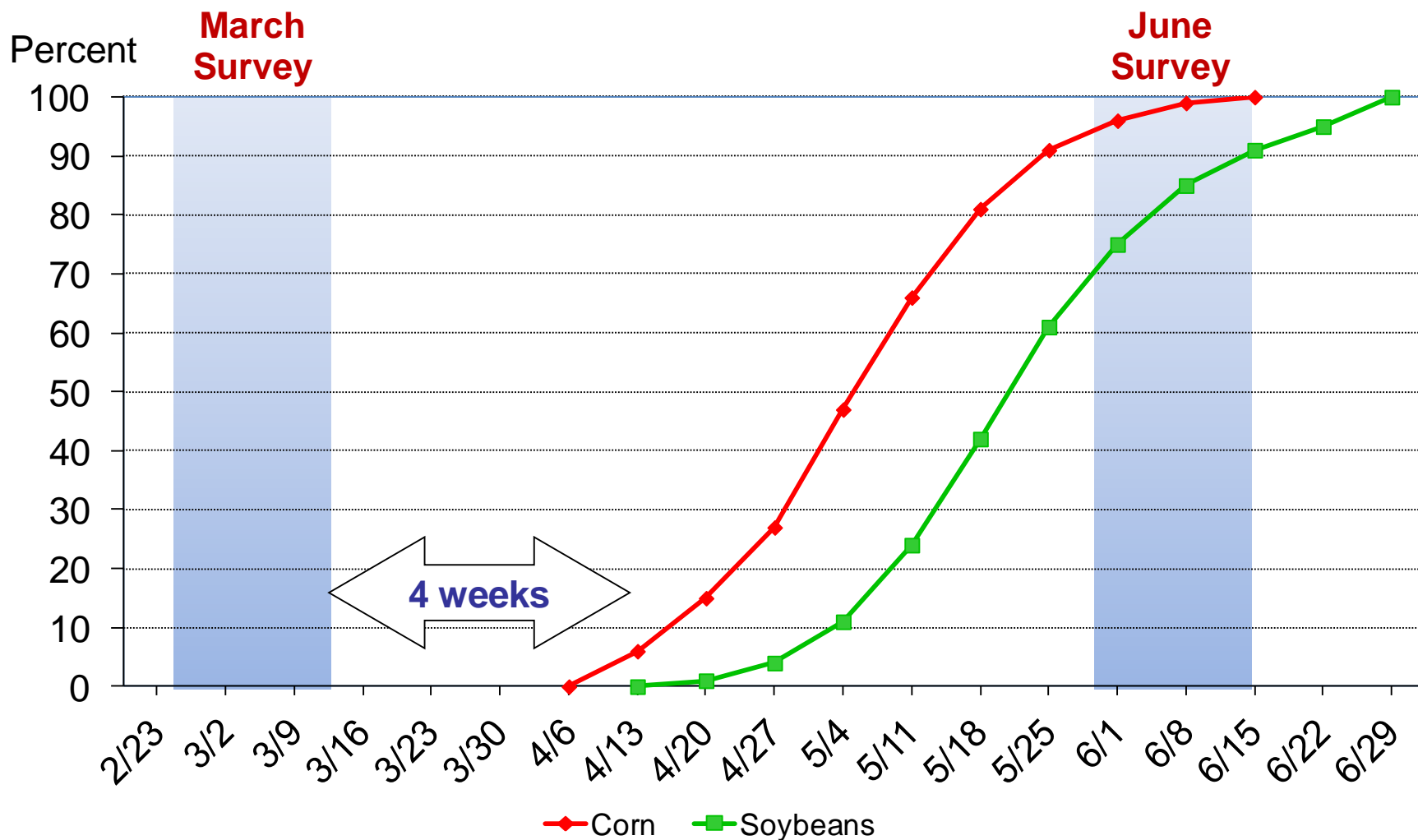
Field Crops	Stocks
Principal Crops Planted Acres	Corn
Feed Grain Acres	Soybeans
Food Grain Acres	Sorghum
Oilseed Acres	All Wheat
Other Crop Acres	Barley
	Oats
	Rough Rice

Survey Overview

	March Ag Survey	Off-Farm Grain Stock Survey
Survey Type	Farmer Reported	Reported
Collection Method	Mail, Phone, Internet, Personal Interview	Mail, Phone, Internet, Personal Interview
Crops Included	Acreage Intentions, On-Farm Stocks	Grains and Oilseed On Hand
States	All except AK and HI	All except AK, HI, and NV
Sample Size	84,347	~ 8,700 Facilities
Collection Period	Feb 27 – Mar 18	Feb 27 – Mar 19

Acreage Intentions vs. Actual Planted Acres

Usual Planting Progress





Principal Crops Planted Acreage

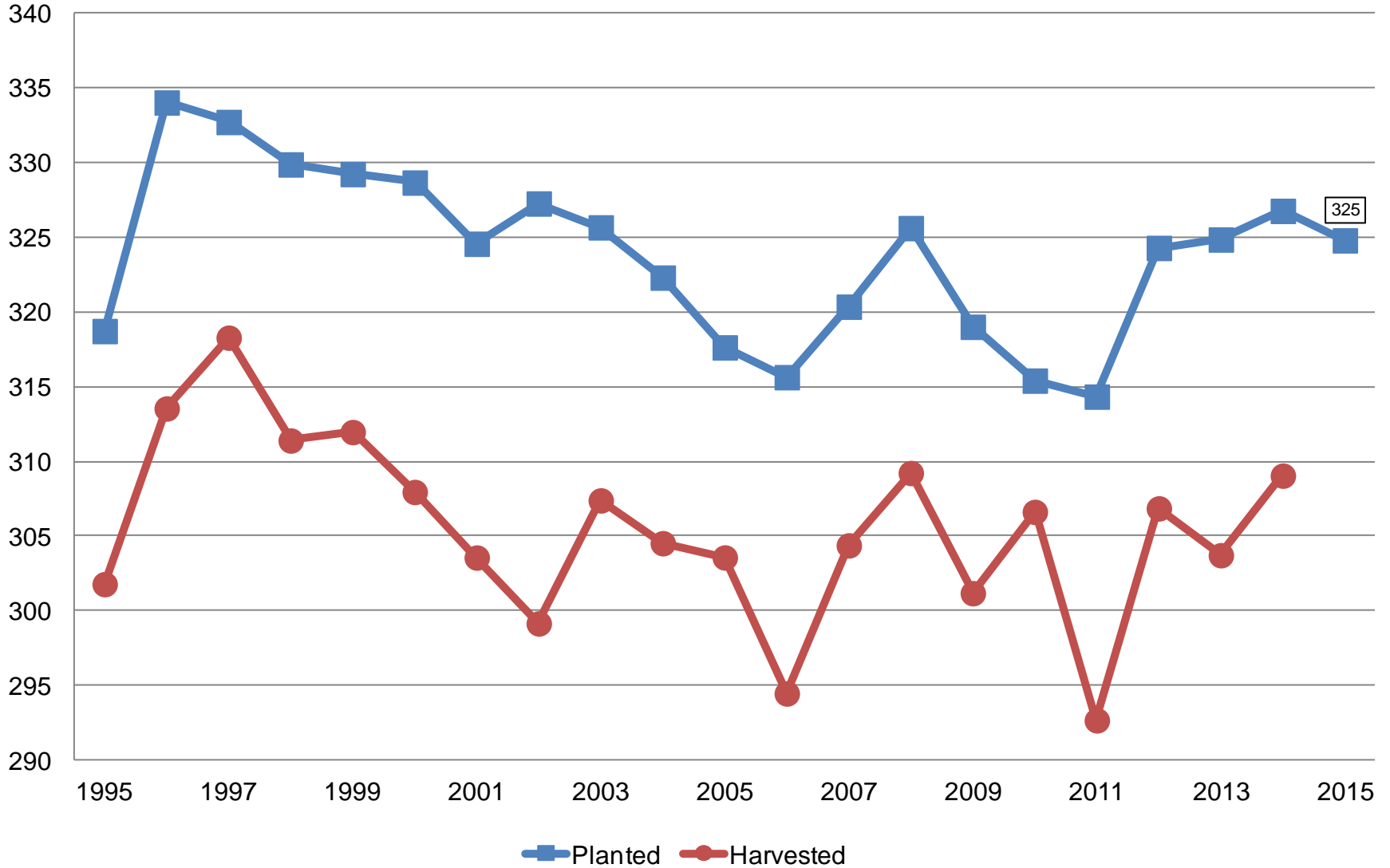
United States

Year	Principal Crops	Change From Previous Year
	<i>Million Acres</i>	
2006	315.6	-2.0
2007	320.4	+4.7
2008	325.6	+5.3
2009	319.0	-6.6
2010	315.4	-3.6
2011	314.3	-1.1
2012	324.3	+10.0
2013	324.9	+0.6
2014	326.8	+1.9
2015	324.8	-2.0



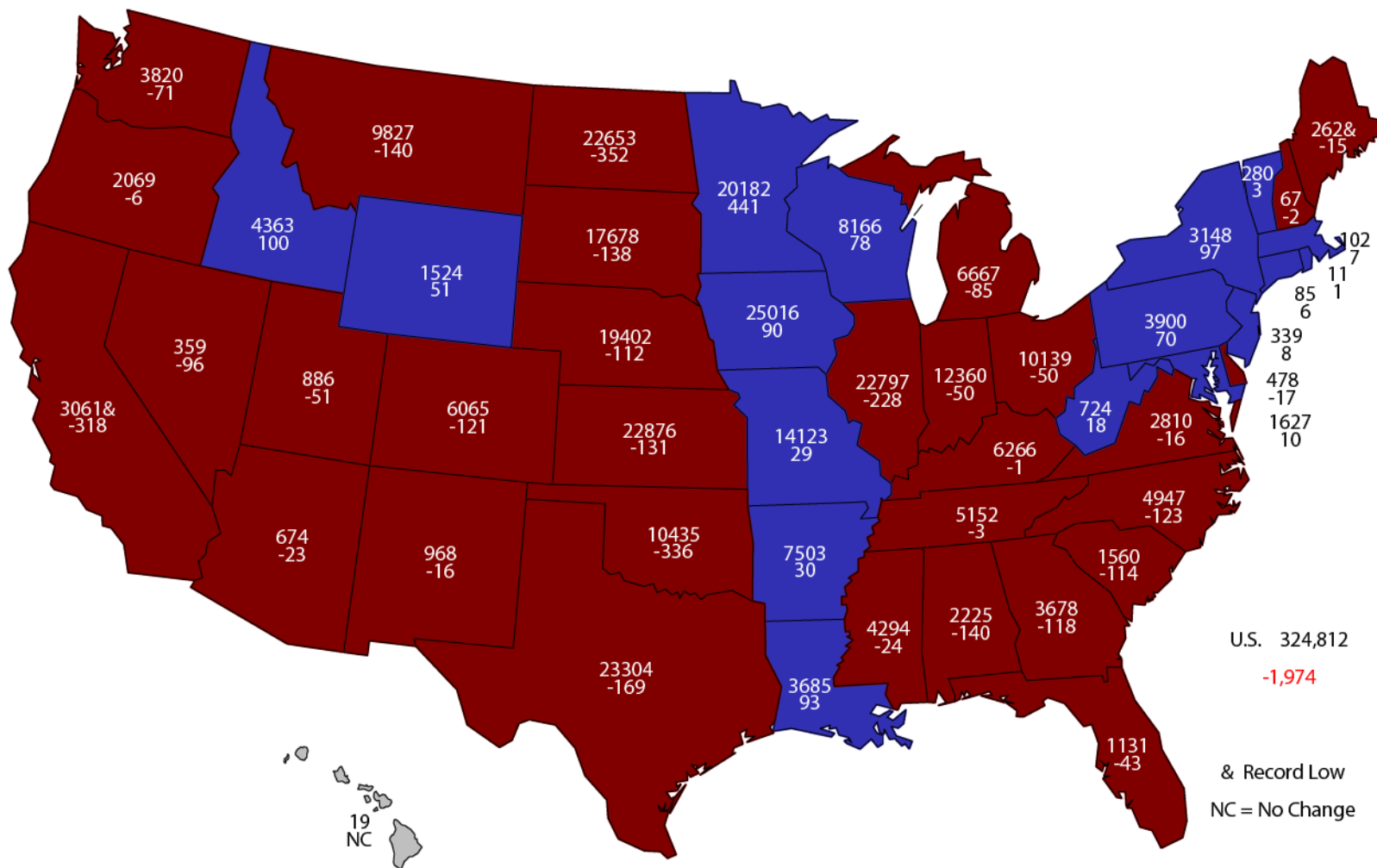
Principal Crops United States

Million Acres



2015 Principal Crops Planted Area

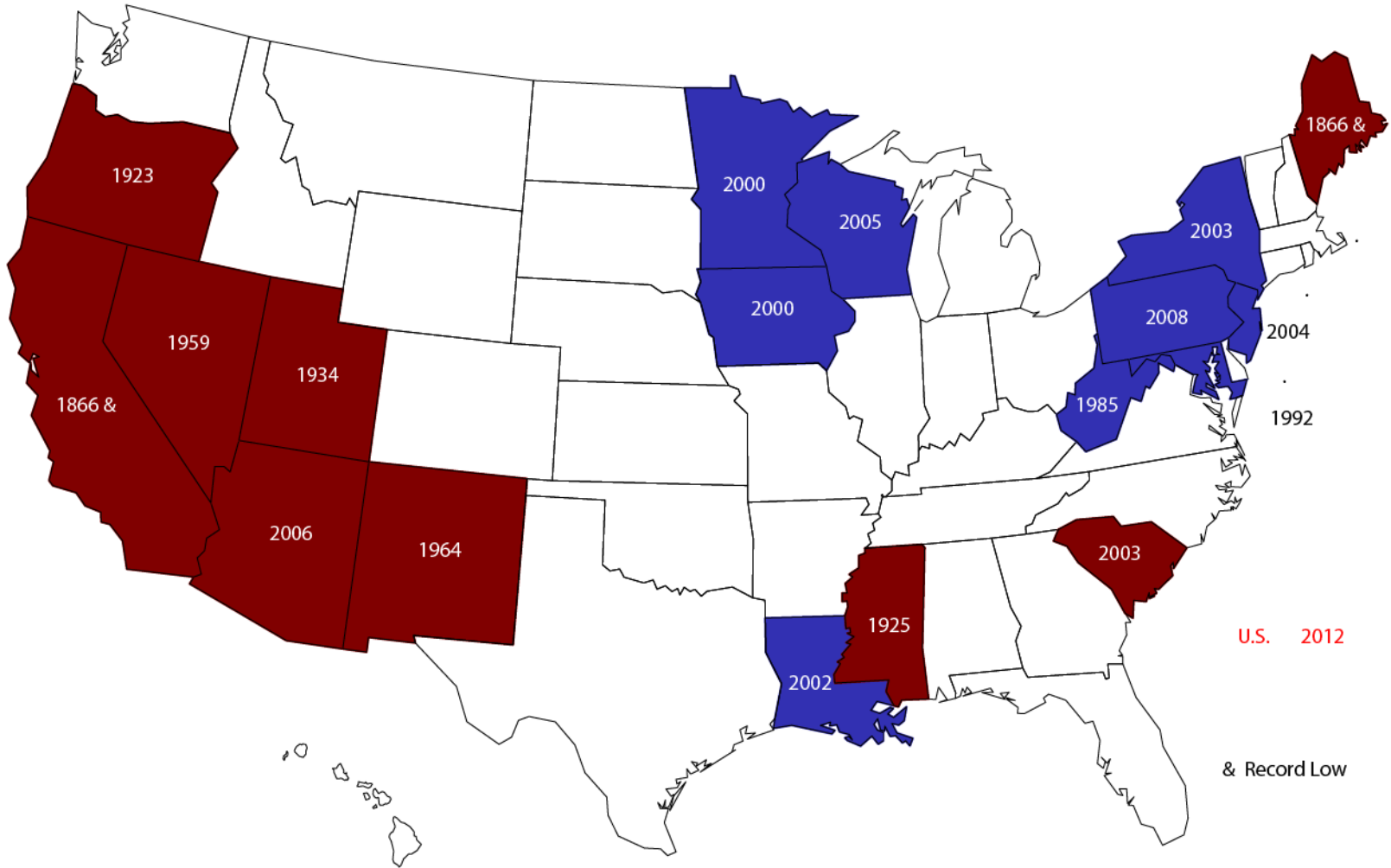
(000) Acres and Change From Previous Year



U.S. 324,812
 -1,974
 & Record Low
 NC = No Change

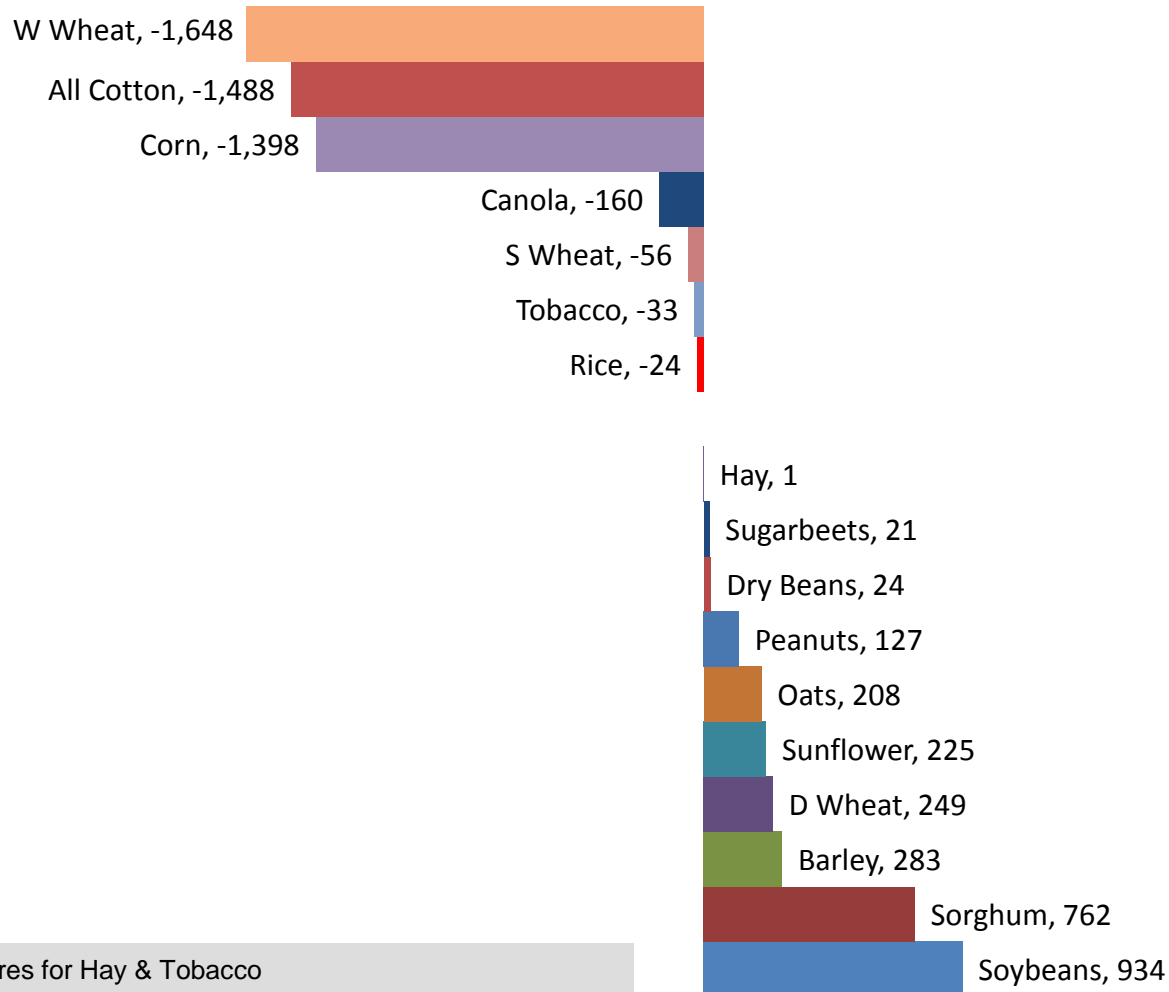
2015 Principal Crops Planted Area

Highest (Blue) / Lowest (Red) Since Year Shown



Change in Planted Acres (000)

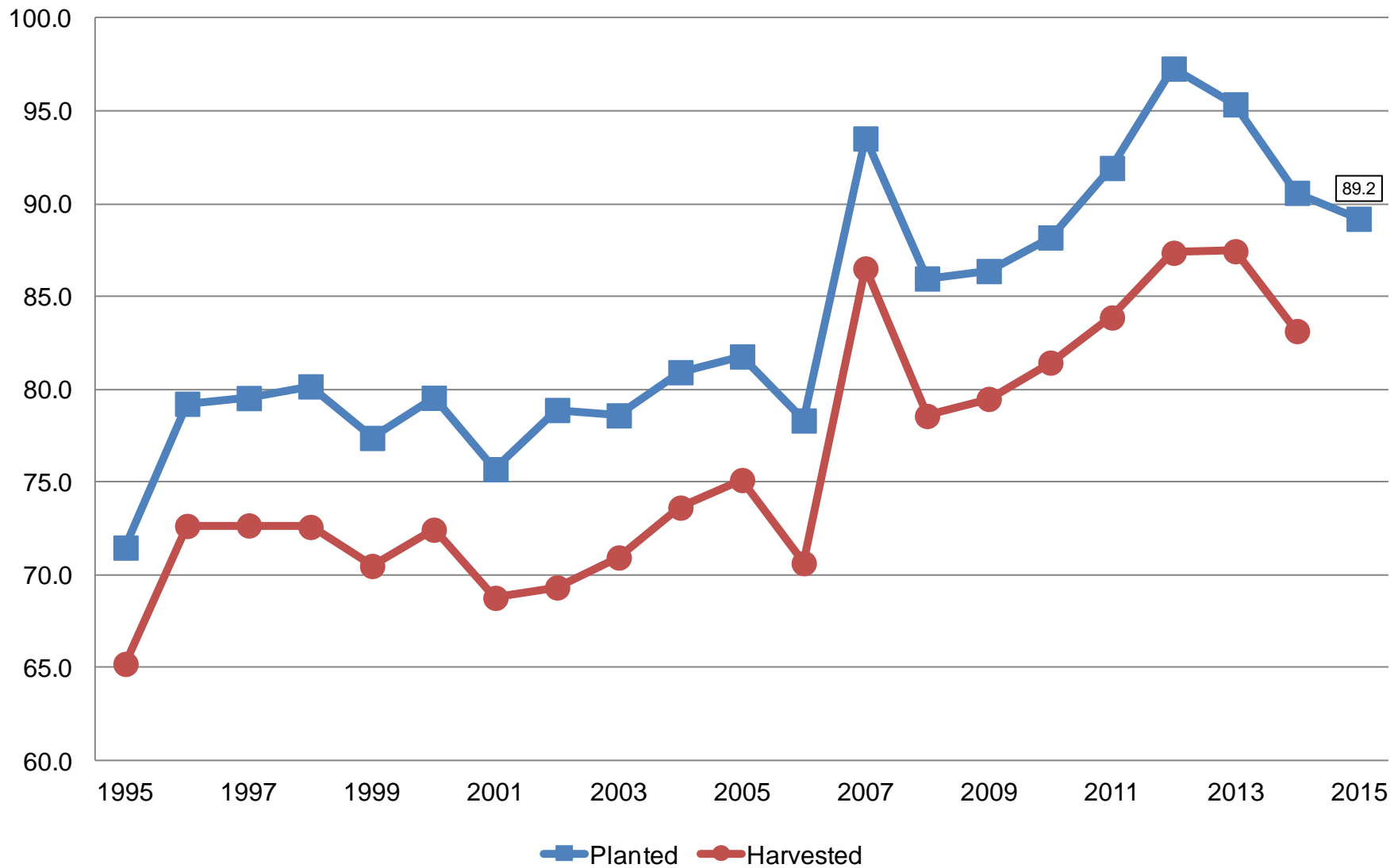
2015 Compared With 2014





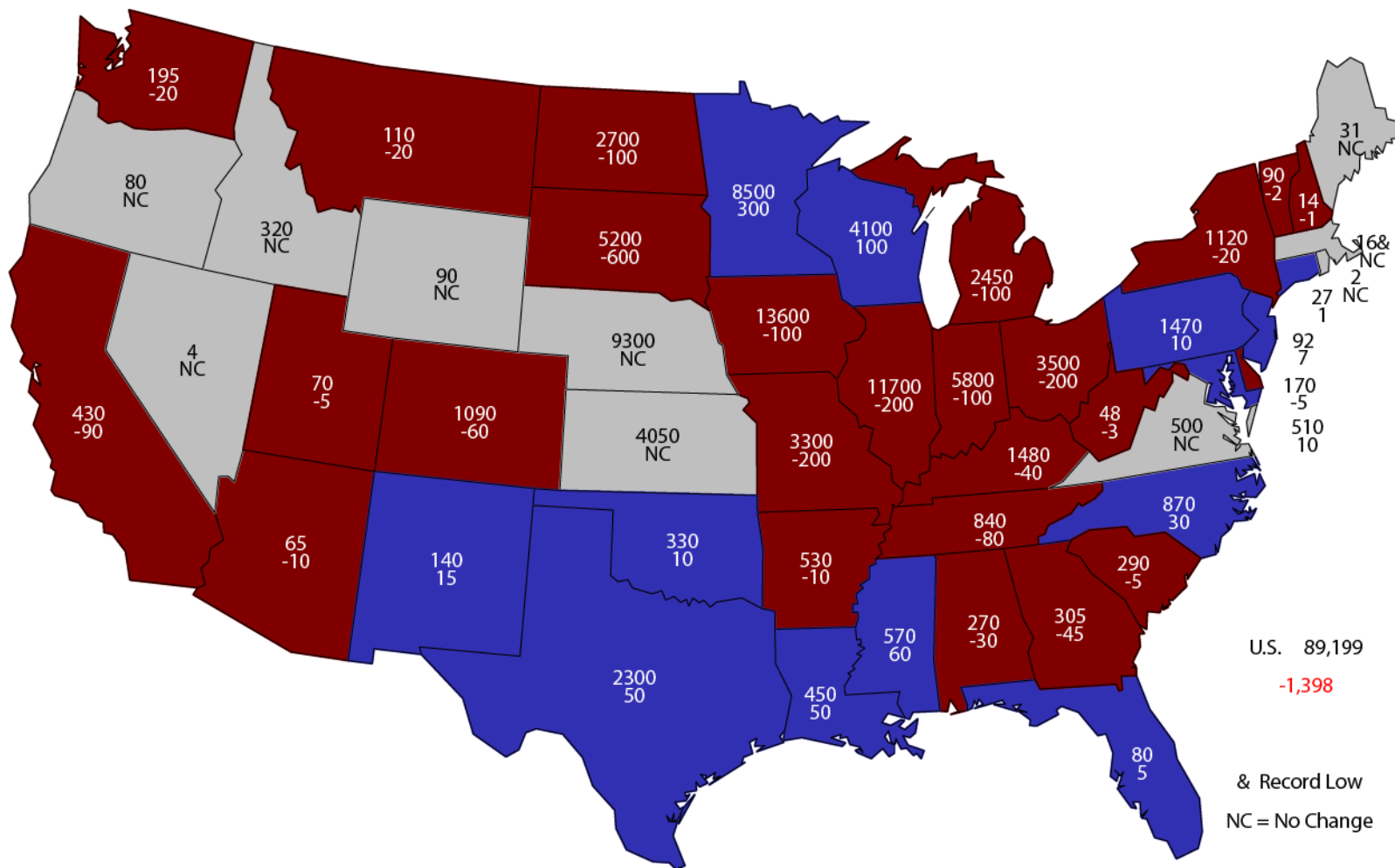
Corn Acres United States

Million Acres



2015 Corn Planted Area

(000) Acres and Change From Previous Year

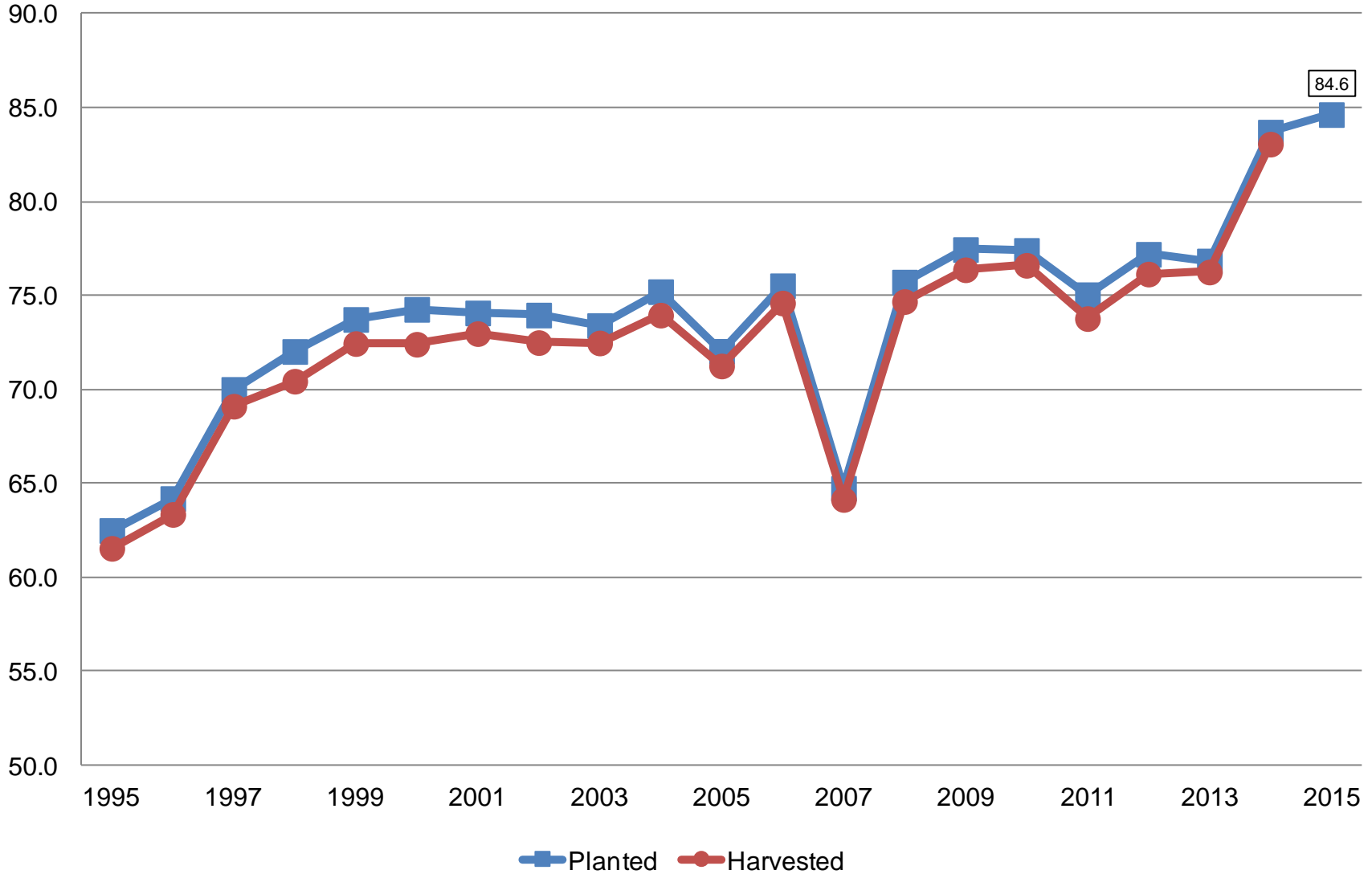


U.S. 89,199
-1,398
 & Record Low
 NC = No Change



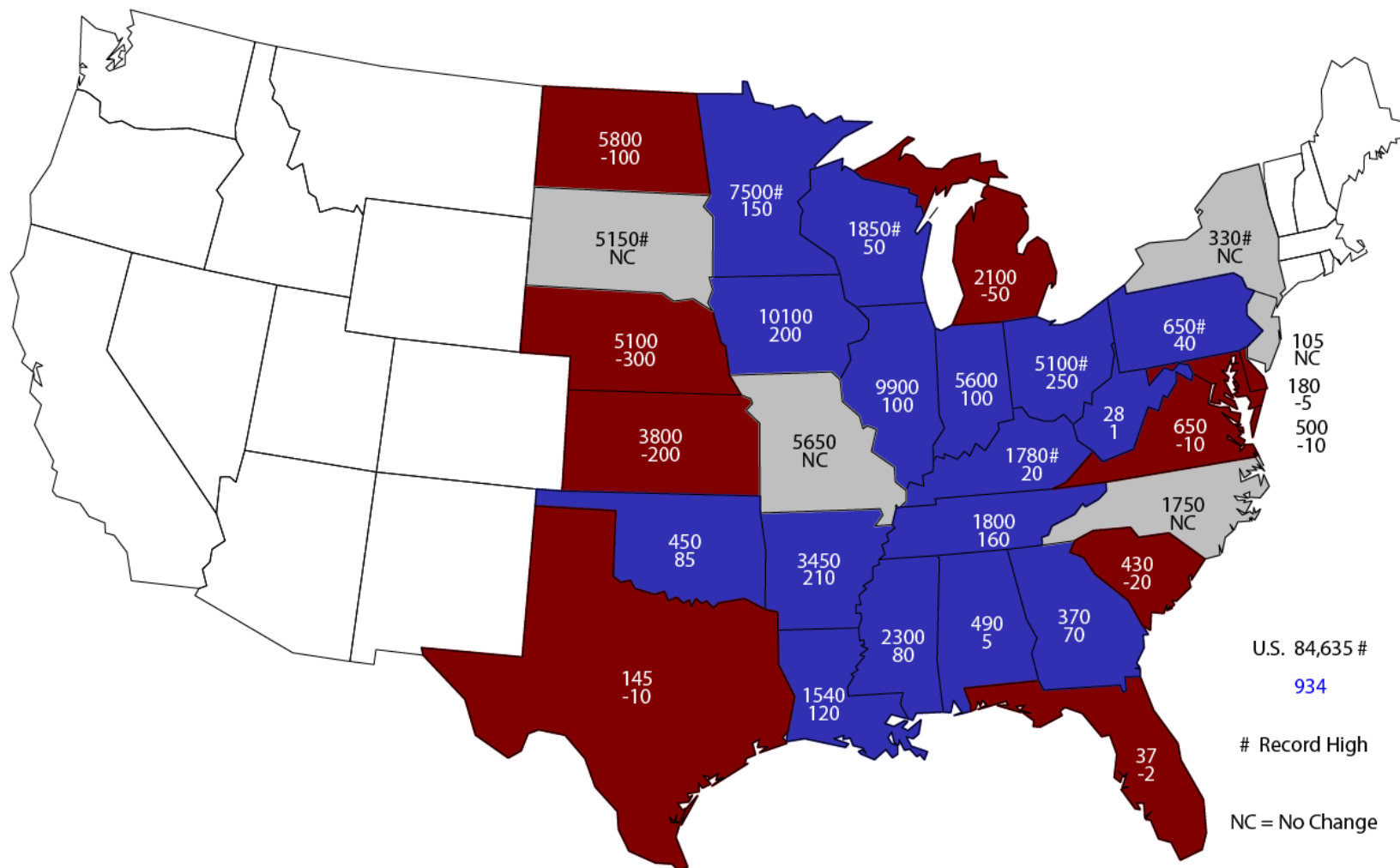
Soybean Acres United States

Million Acres



2015 Soybean Planted Area

(000) Acres and Change From Previous Year



U.S. 84,635 #

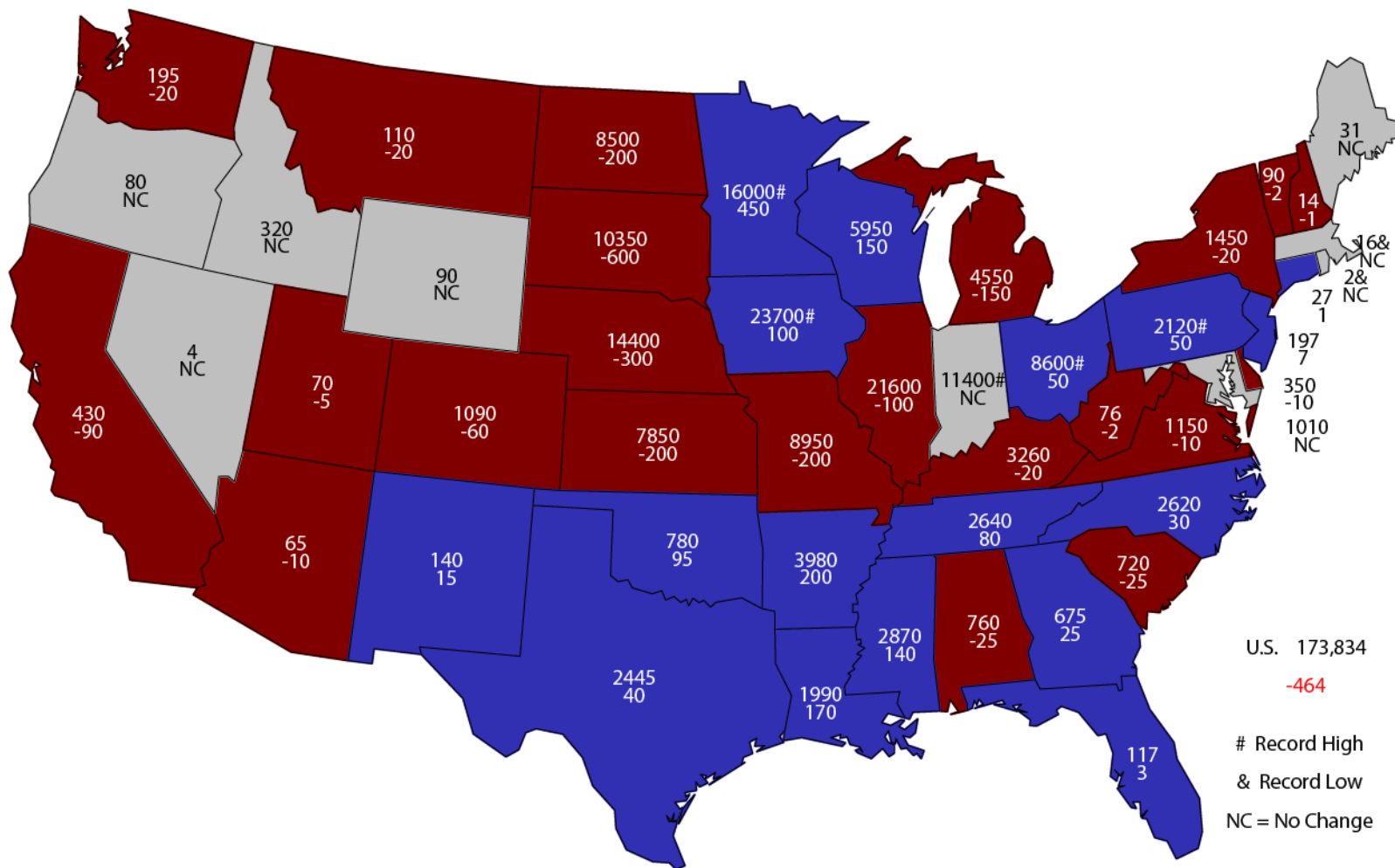
934

Record High

NC = No Change

2015 Combined Corn & Soybean Planted Area

(000) Acres and Change From Previous Year

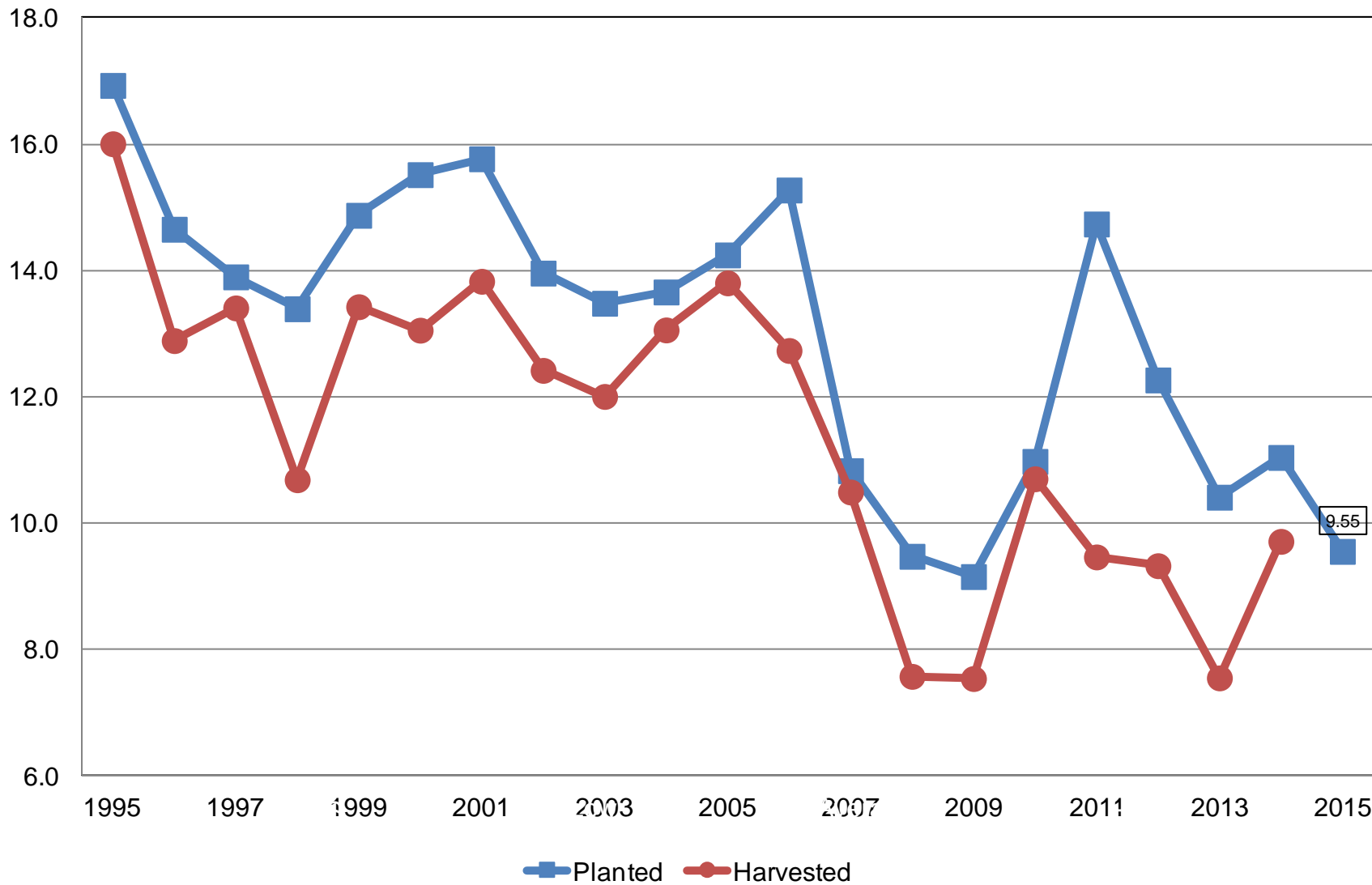


U.S. 173,834
-464

Record High
& Record Low
NC = No Change

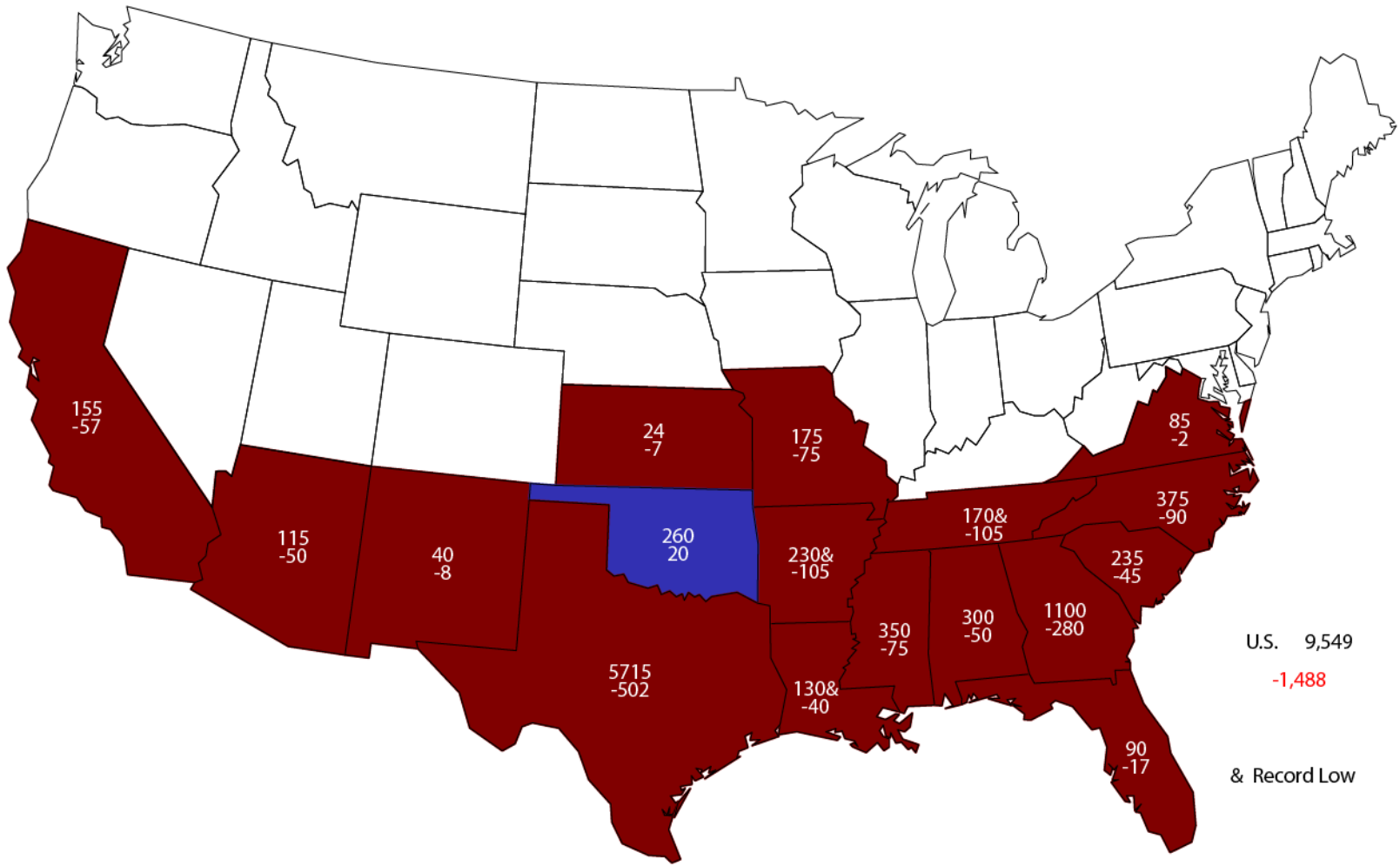
All Cotton Acres United States

Million Acres



2015 All Cotton Planted Area

Acres (000) and Change From Previous Year



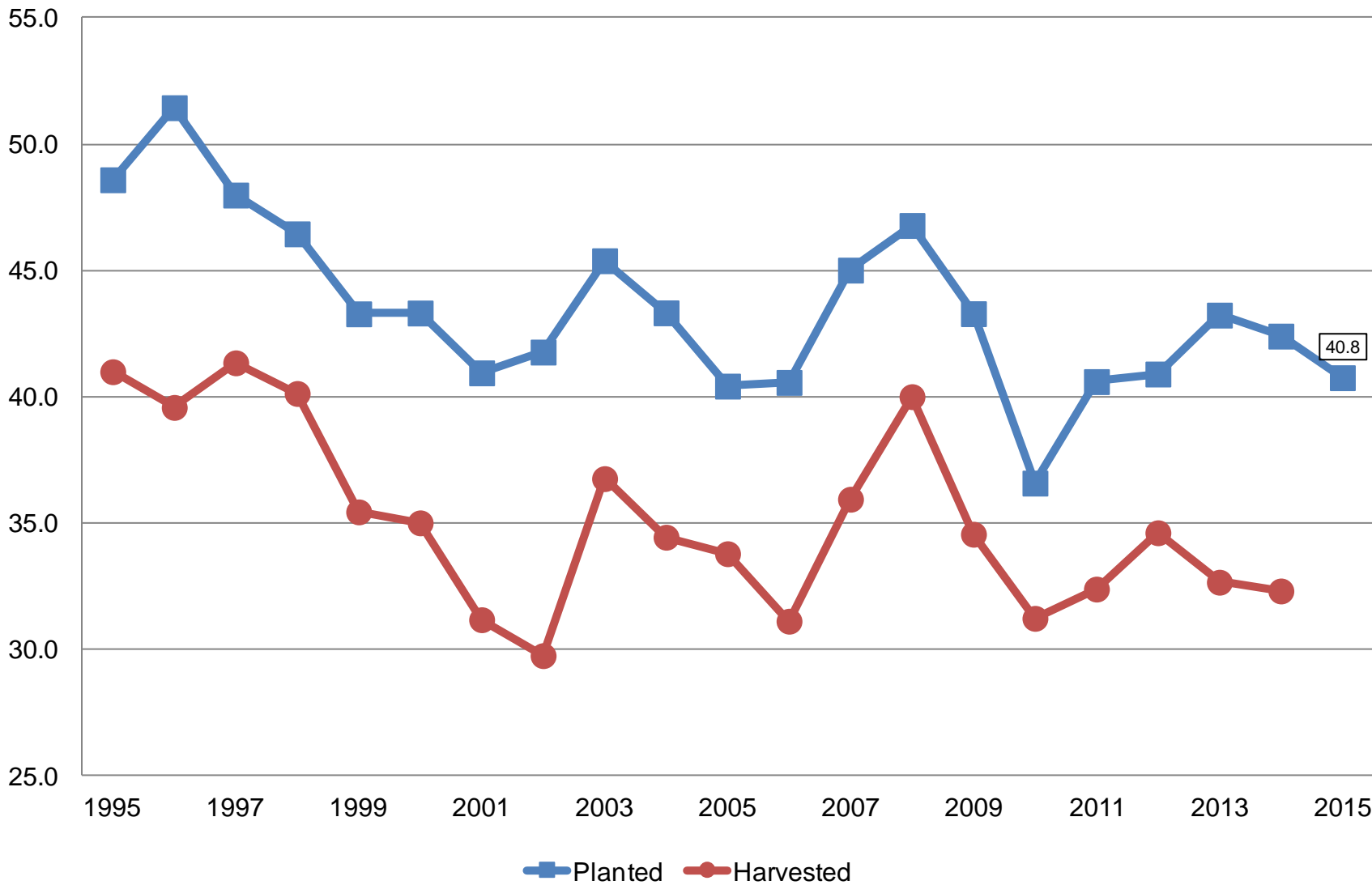
U.S. 9,549
 -1,488
 & Record Low



Winter Wheat Acres

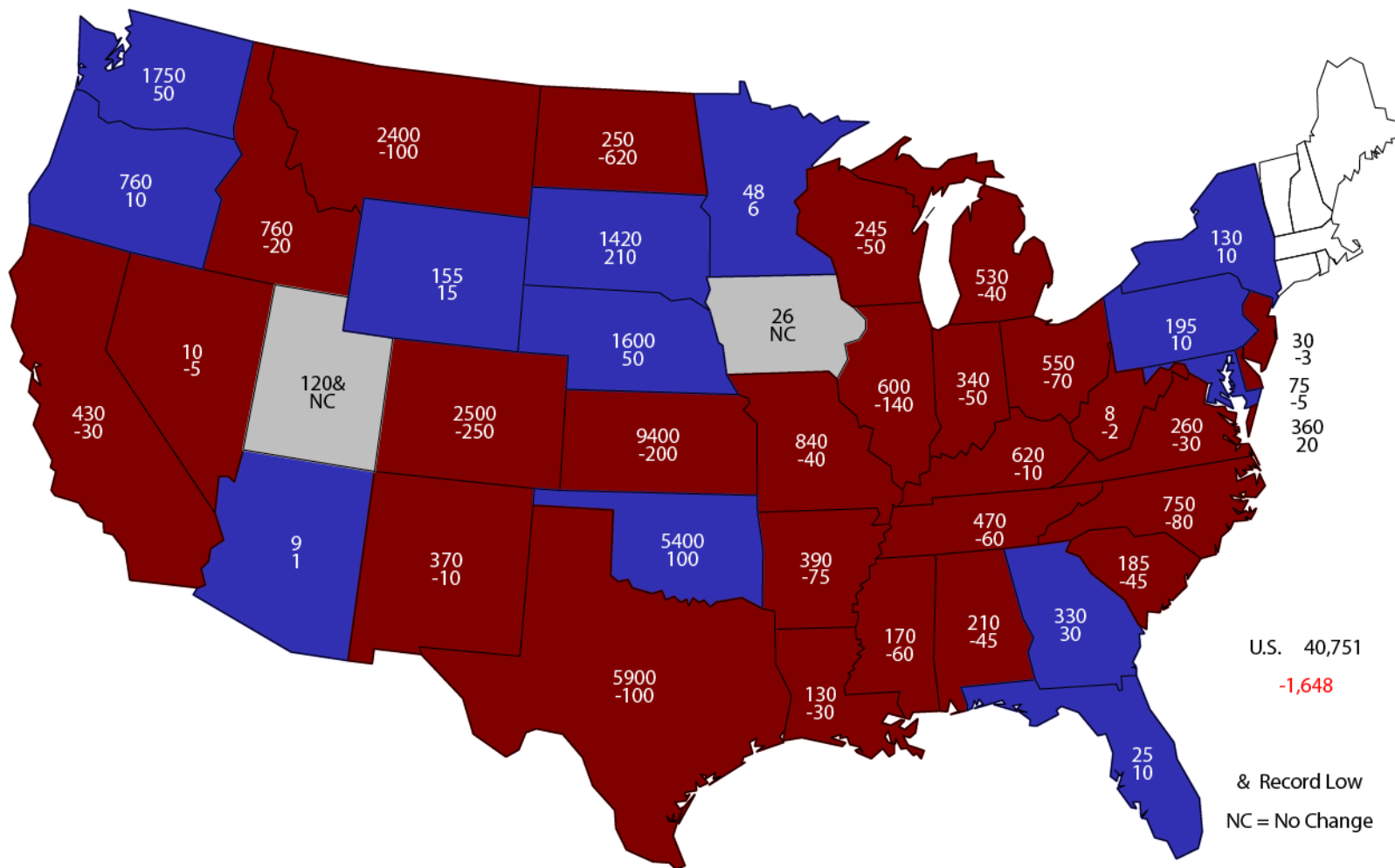
United States

Million Acres



2015 Winter Wheat Planted Area

(000) Acres and Change From Previous Year



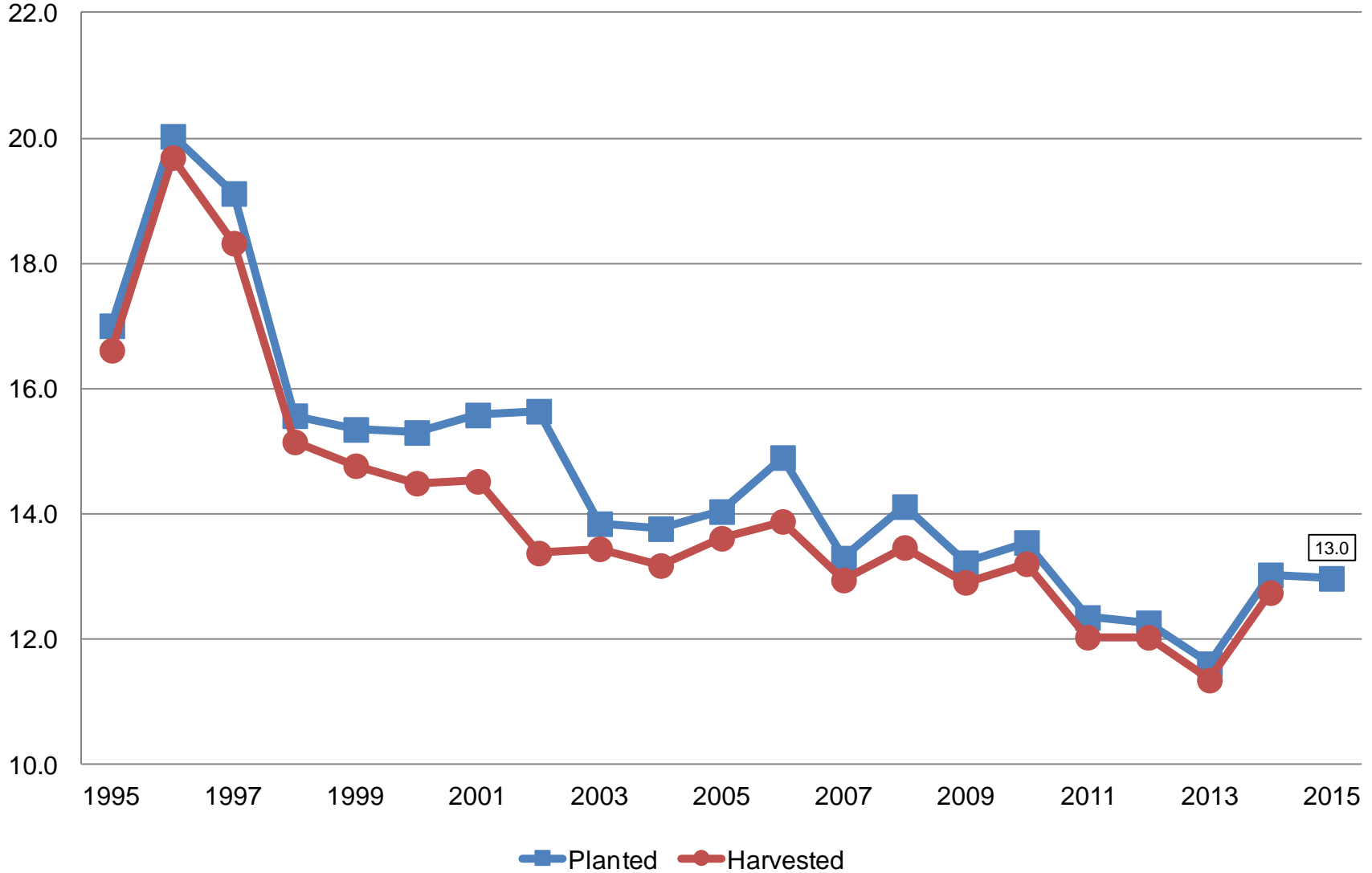
U.S. 40,751
-1,648

& Record Low
NC = No Change



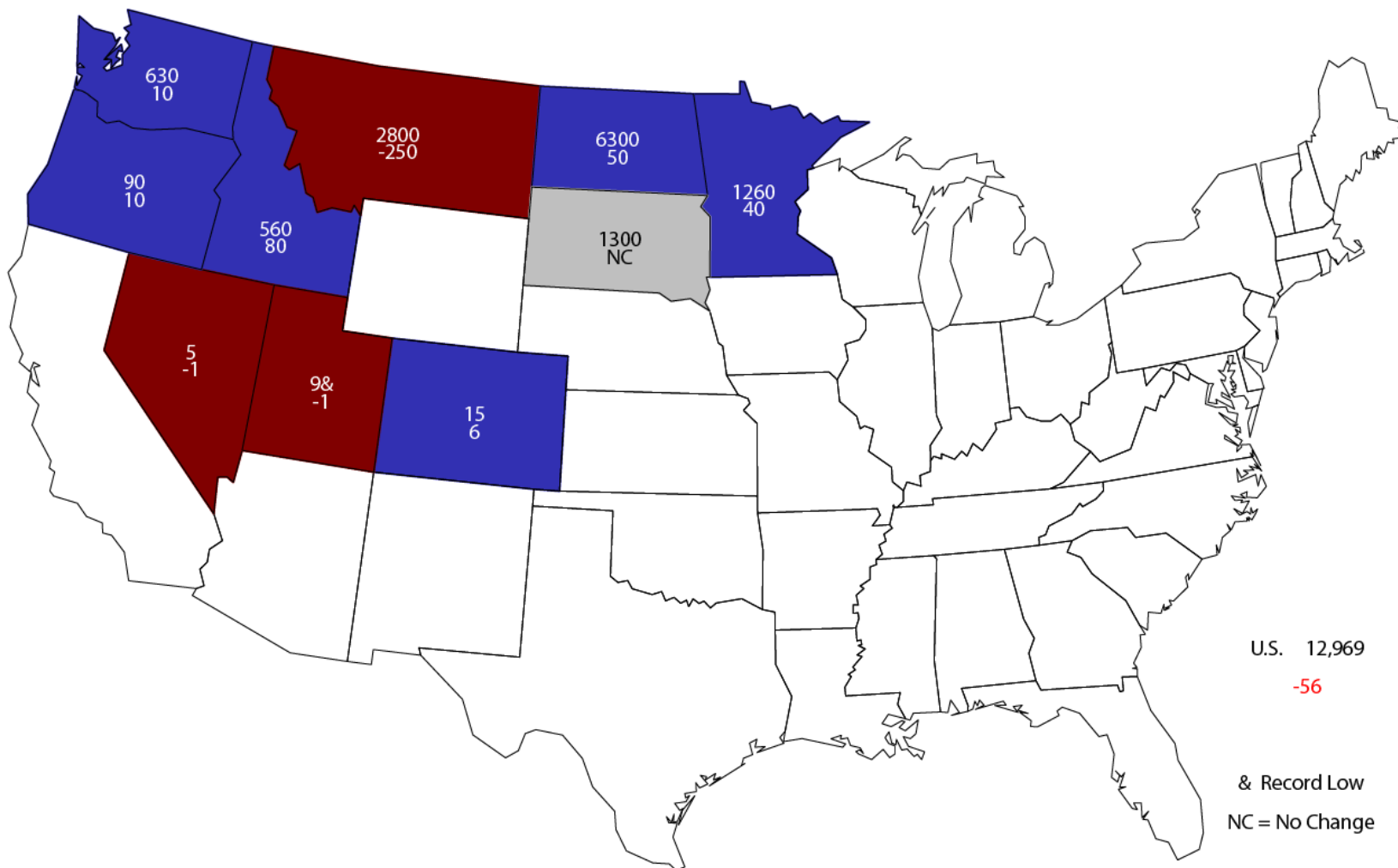
Other Spring Wheat Acres United States

Million Acres



2015 Other Spring Wheat Planted Area

(000) Acres and Change From Previous Year



U.S. 12,969
-56

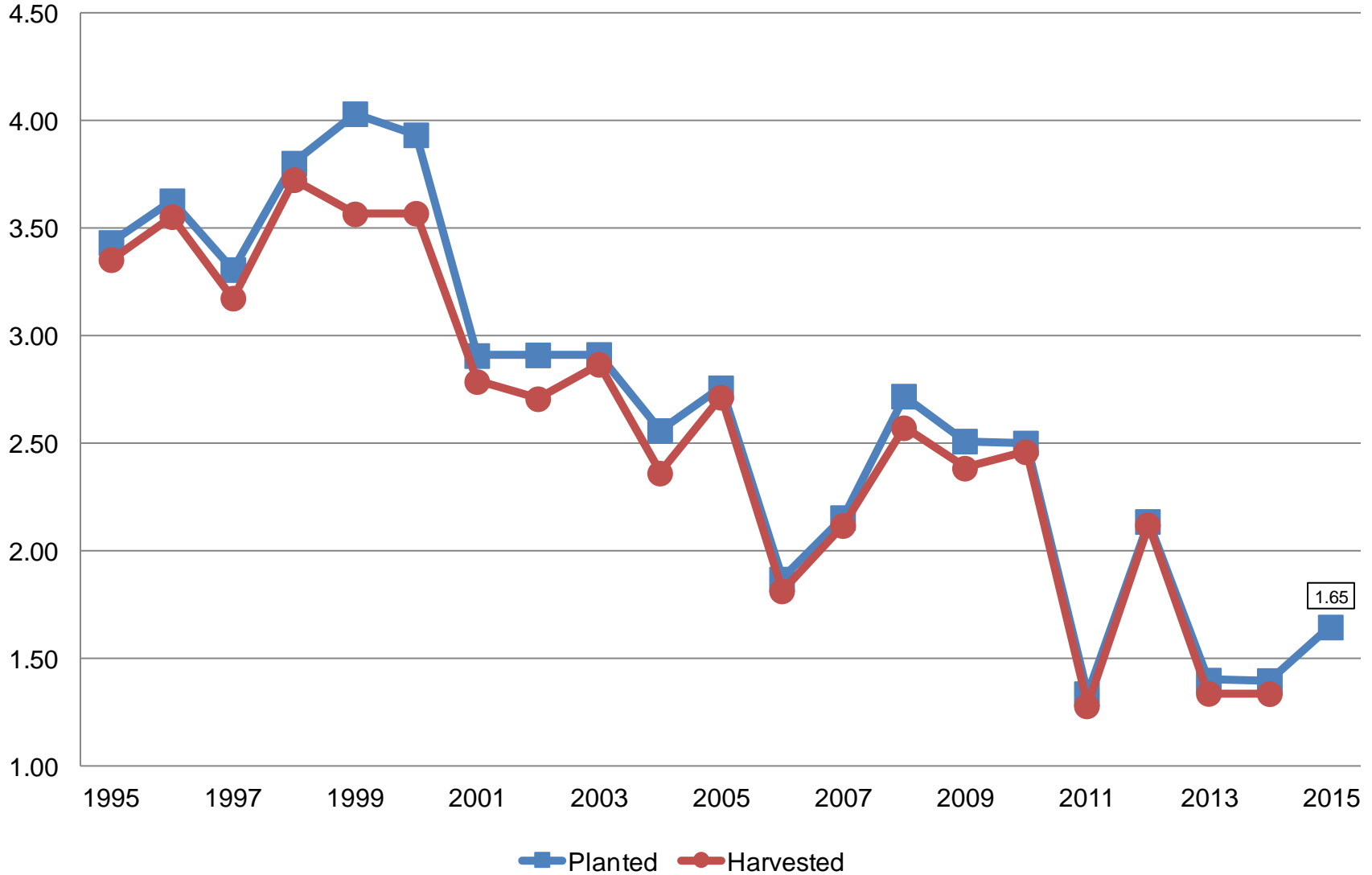
& Record Low
NC = No Change



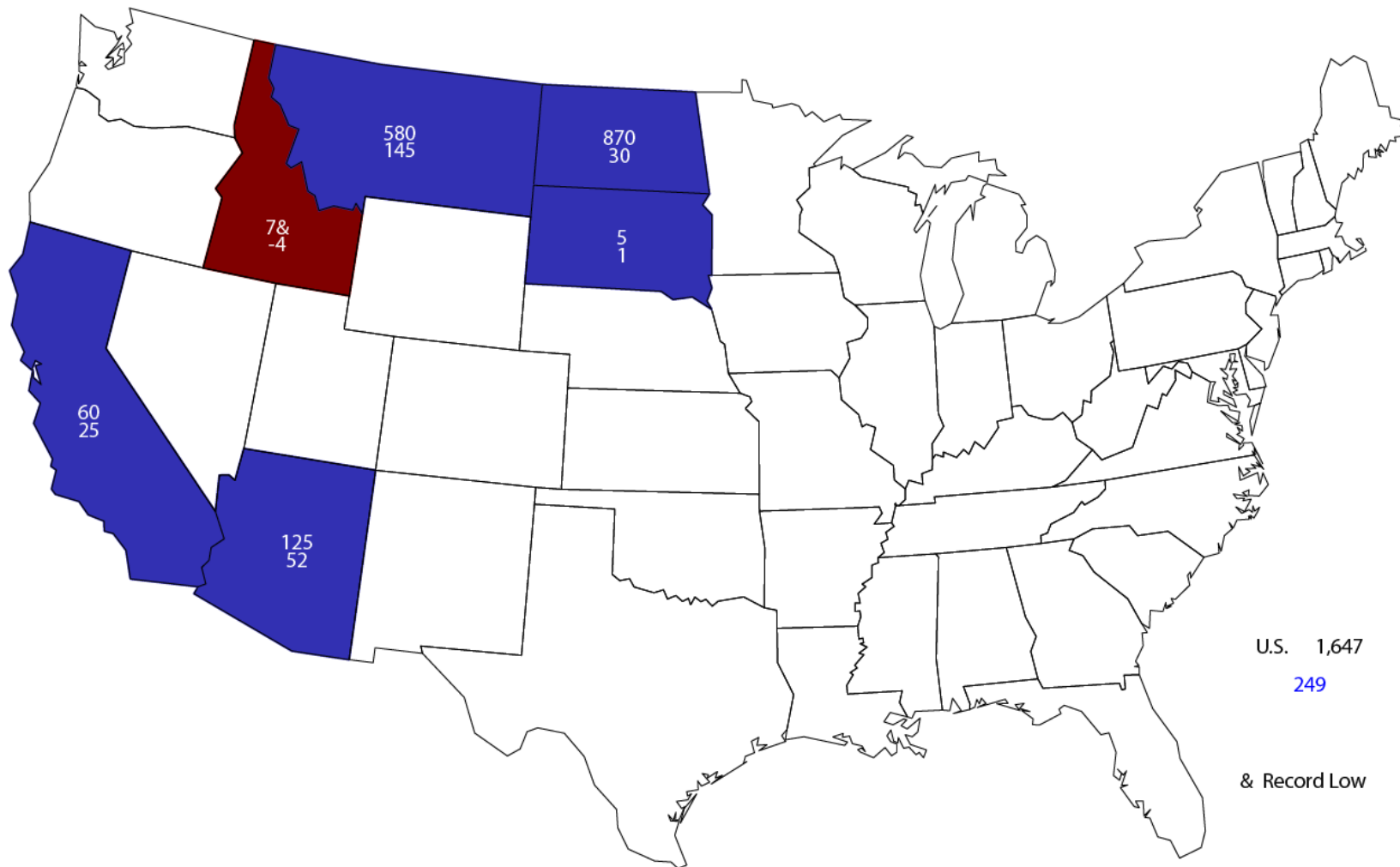
Durum Wheat Acres

United States

Million Acres



2015 Durum Wheat Planted Area (000) Acres and Change From Previous Year



U.S. 1,647
249

& Record Low



March 2015 Prospective Plantings

Crop	Unit	March 2015	% Change From Previous Forecast	% Change From Previous Season
Feed Grains				
Corn	Mil Ac	89.2	NA	-1.5
Sorghum	Mil Ac	7.90	NA	+10.7
Oats	Mil Ac	2.93	NA	+7.6
Barley	Mil Ac	3.26	NA	+9.5



March 2015 Prospective Plantings

Crop	Unit	March 2015	% Change From Previous Forecast	% Change From Previous Season
Food Grains				
Wheat, All	Mil Ac	55.4	NA	-2.6
Wheat, Winter	Mil Ac	40.8	+0.7	-3.9
Wheat, Spring	Mil Ac	13.0	NA	-0.4
Wheat, Durum	Mil Ac	1.65	NA	+17.8
Rice	Mil Ac	2.92	NA	-0.8



March 2015 Prospective Plantings

Crop	Unit	March 2015	% Change From Previous Forecast	% Change From Previous Season
Oilseeds				
Soybeans	Mil Ac	84.6	NA	+1.1
Peanuts	Mil Ac	1.48	NA	+9.4
Sunflower	Mil Ac	1.79	NA	+14.4
Canola	Mil Ac	1.55	NA	-9.3
Flaxseed	Thou Ac	401	NA	+28.9
All Cotton	Mil Ac	9.55	NA	-13.5



March 2015 Prospective Plantings

Crop	Unit	March 2015	% Change From Previous Forecast	% Change From Previous Season
Other Crops				
All Hay	Mil Ac	57.1	NA	+<0.1
Sugarbeets	Mil Ac	1.18	NA	+1.8
Tobacco	Thou Ac	345	NA	-8.7
Spring Potatoes	Thou Ac	73.0	NA	-1.1
Dry Edible Beans	Mil Ac	1.74	NA	+1.4
Dry Edible Peas	Mil Ac	1.01	NA	+7.5
A. Winter Peas	Thou Ac	20.0	NA	-16.7
Lentils	Thou Ac	385	NA	+37.0
Sweet Potatoes	Thou Ac	138	NA	+0.3



March 2015 Grain Stocks

Crop	Unit	March 2015	% Change From Previous Estimate	% Change From Previous Year
Stocks				
Corn	Bil Bu	7.74	NA	+10.5
Soybeans	Bil Bu	1.33	NA	+34.2
Sorghum	Mil Bu	119	NA	-32.5
Rice	Mil Cwt	112	NA	+26.4

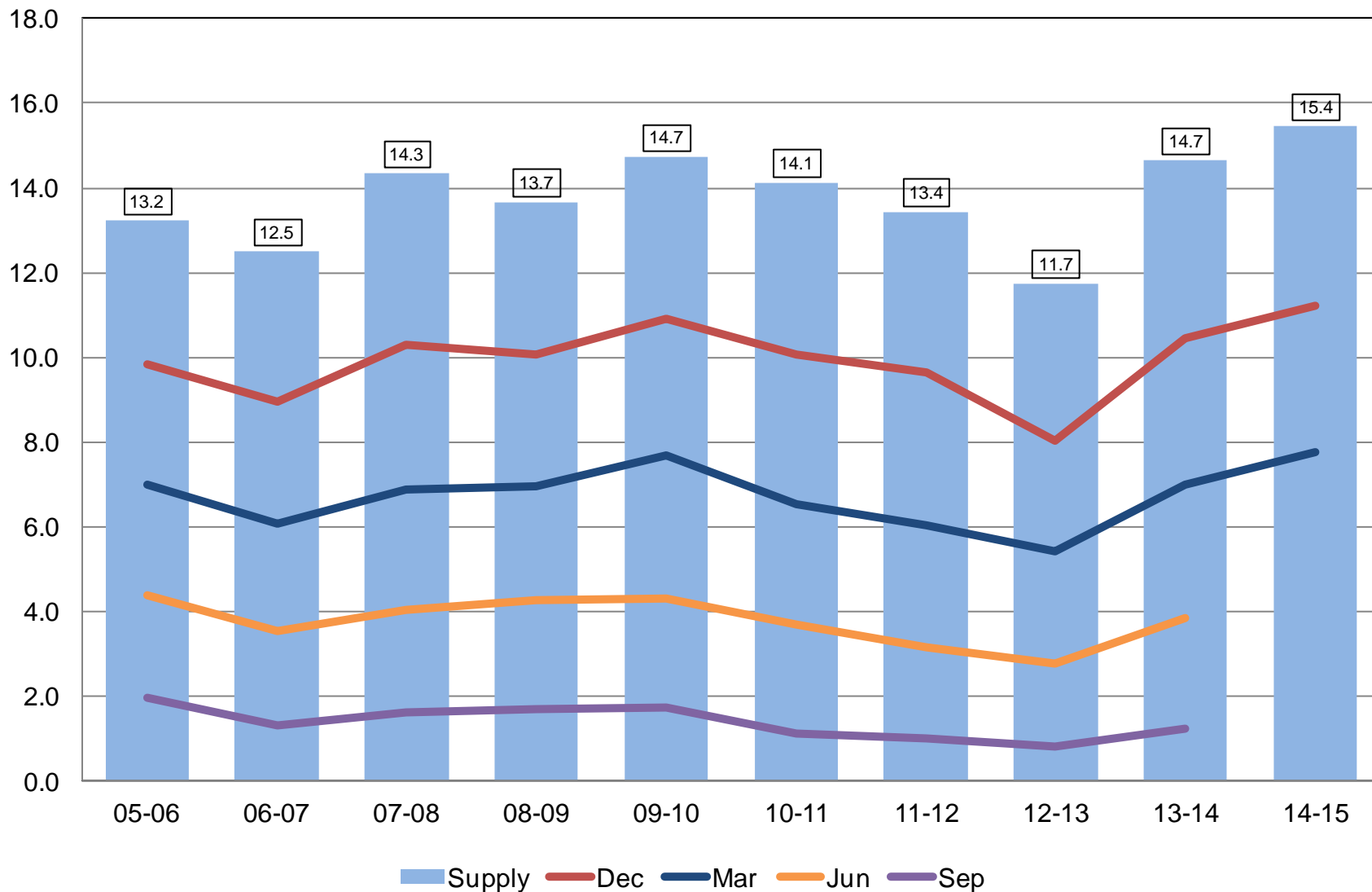


March 2015 Grain Stocks

Crop	Unit	March 2015	% Change From Previous Estimate	% Change From Previous Year
Stocks				
Wheat, All	Bil Bu	1.12	NA	+6.4
Barley	Mil Bu	118	NA	-3.0
Oats	Mil Bu	59.4	NA	+69.0

Corn Stocks United States

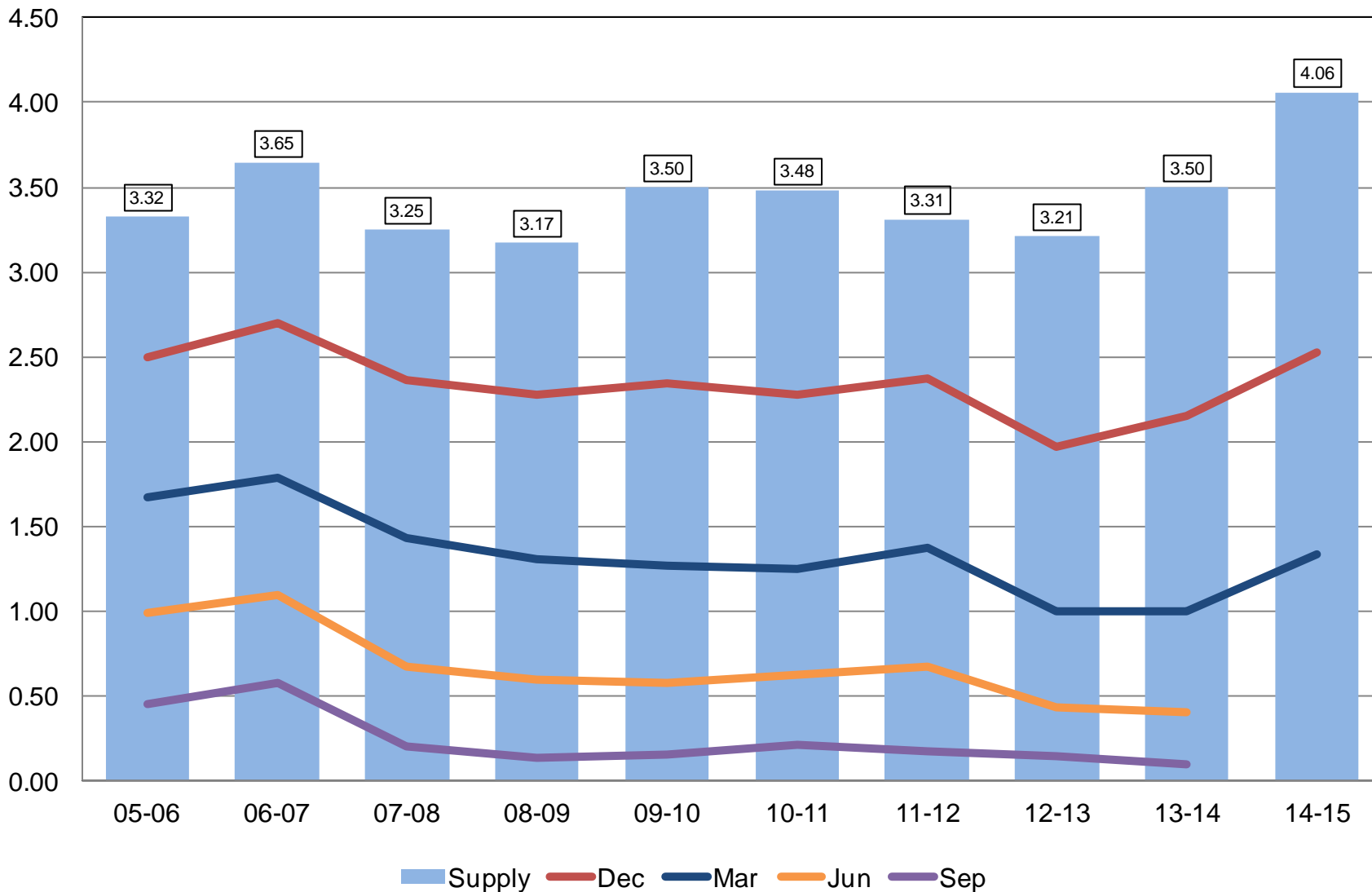
Billion Bushels





Soybean Stocks United States

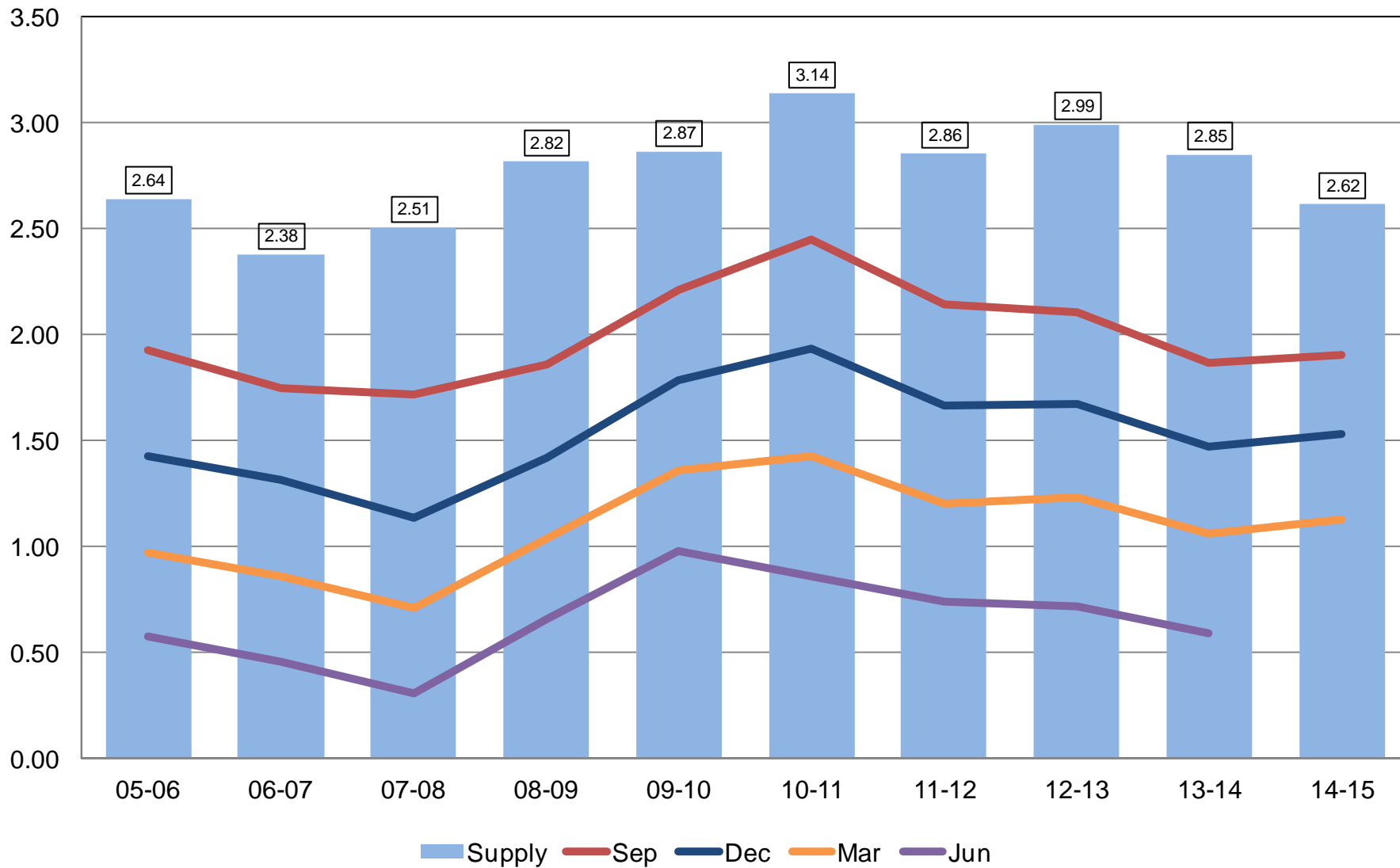
Billion Bushels





All Wheat Stocks United States

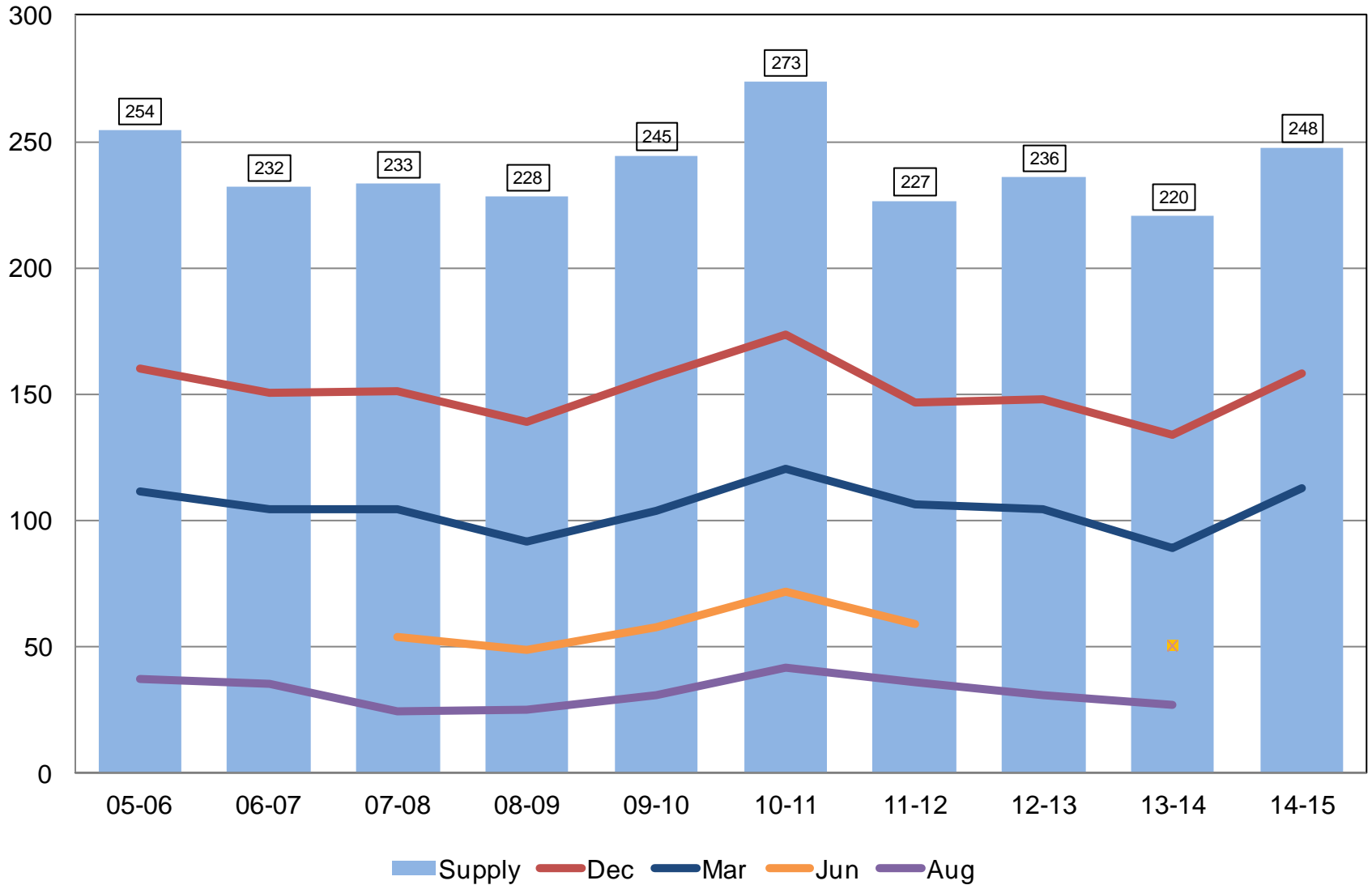
Billion Bushels





Rough Rice Stocks United States

Million Hundredweight





Upcoming Reports

Release Date	Report Title
April 1	CAIR: Grain Crushings
April 6	Crop Progress
April 9	Crop Production
April 24	Cattle on Feed
April 30	Agricultural Prices
May 1	CAIR: Cotton CAIR: Flour Millings CAIR: Grain Crushing



United States Department of Agriculture
National Agricultural Statistics Service

All Reports Available At
www.nass.usda.gov

For Questions
202-720-2127
800-727-9540
nass@nass.usda.gov