



United States Department of Agriculture
National Agricultural Statistics Service

May Crop Production
Executive Summary

Lance Honig, Chief
Crops Branch



Contents

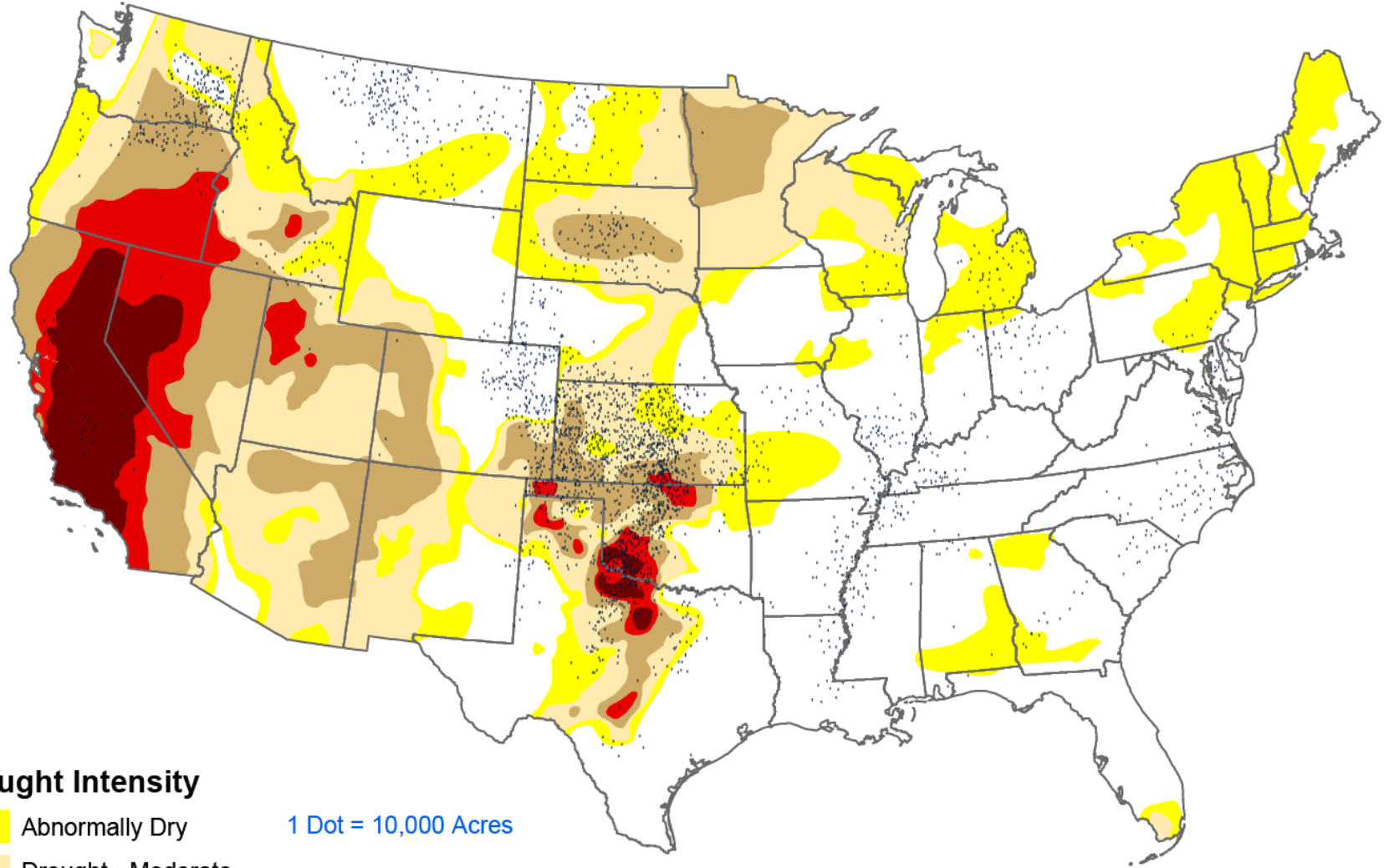
Field Crops	Fruit & Nuts	Specialty Crops
Winter Wheat	Citrus	Taro (Hawaii)
Hay Stocks	Peaches (CA)	
Cotton	Almonds (CA)	
Tobacco		
Potatoes		



Survey Overview

	Ag Yield	Objective Yield
Survey Type	Farmer Reported	Field Measurement
Crops Included	Winter and Durum Wheat and Hay Stocks	Winter Wheat
States	All except AK and HI	KS, OK, TX
Sample Size	12,394	355
Collection Period	Apr 24-May 7	Apr 24-May 1

U.S. Drought Intensity For May 5, 2015 Compared With Winter Wheat Acreage



Drought Intensity

- Abnormally Dry
- Drought - Moderate
- Drought - Severe
- Drought - Extreme
- Drought - Exceptional

1 Dot = 10,000 Acres

Sources:

2012 Census of Agriculture, USDA-NASS
 U.S. Drought Monitor (<http://drought.unl.edu/dm/monitor.html>)
 National Drought Mitigation Center
 U.S. Department of Agriculture
 National Oceanic and Atmospheric Administration 5-12-15

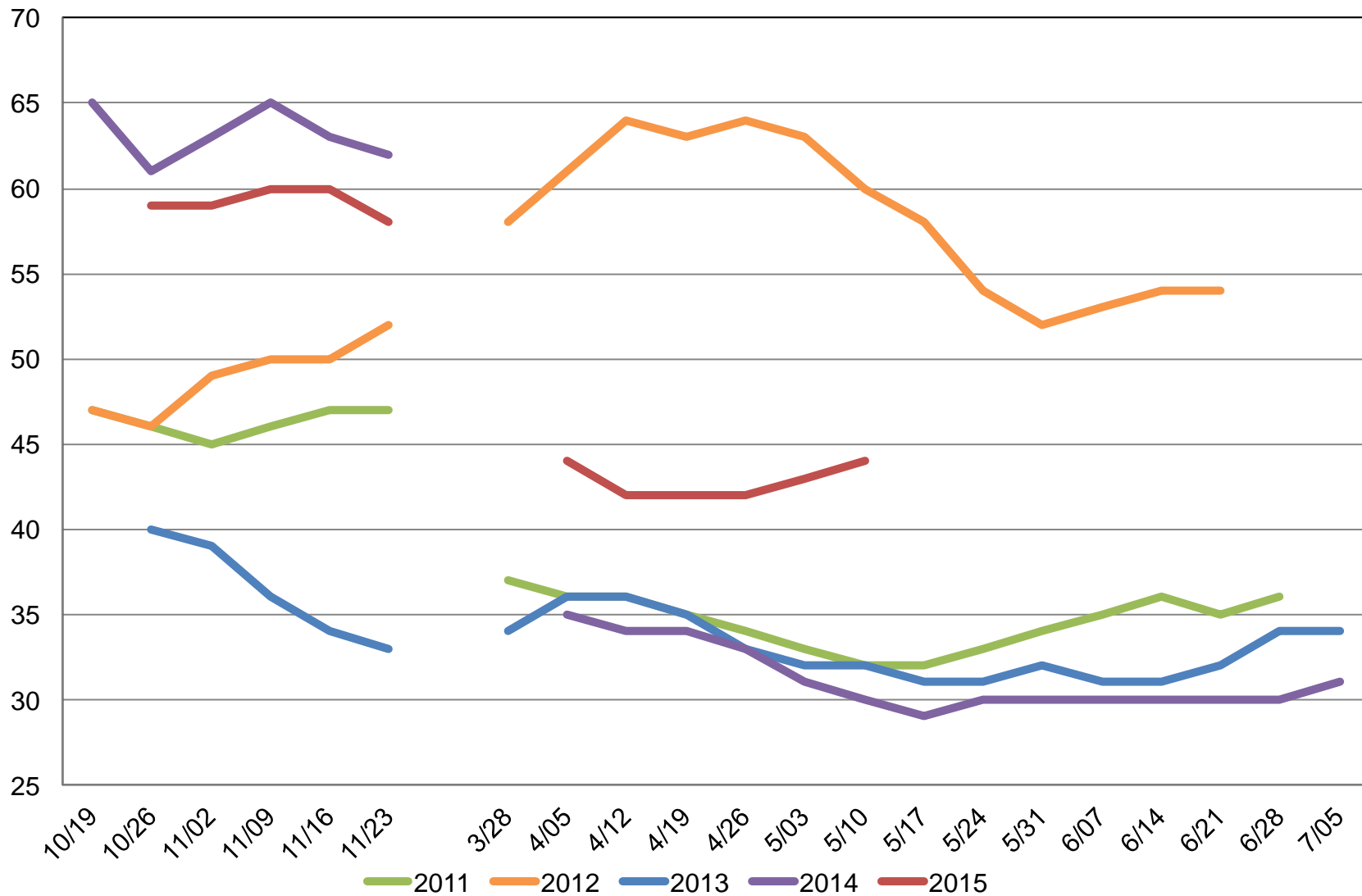
USDA-NASS



U.S. Winter Wheat Condition

Percent Rated Good to Excellent

Percent





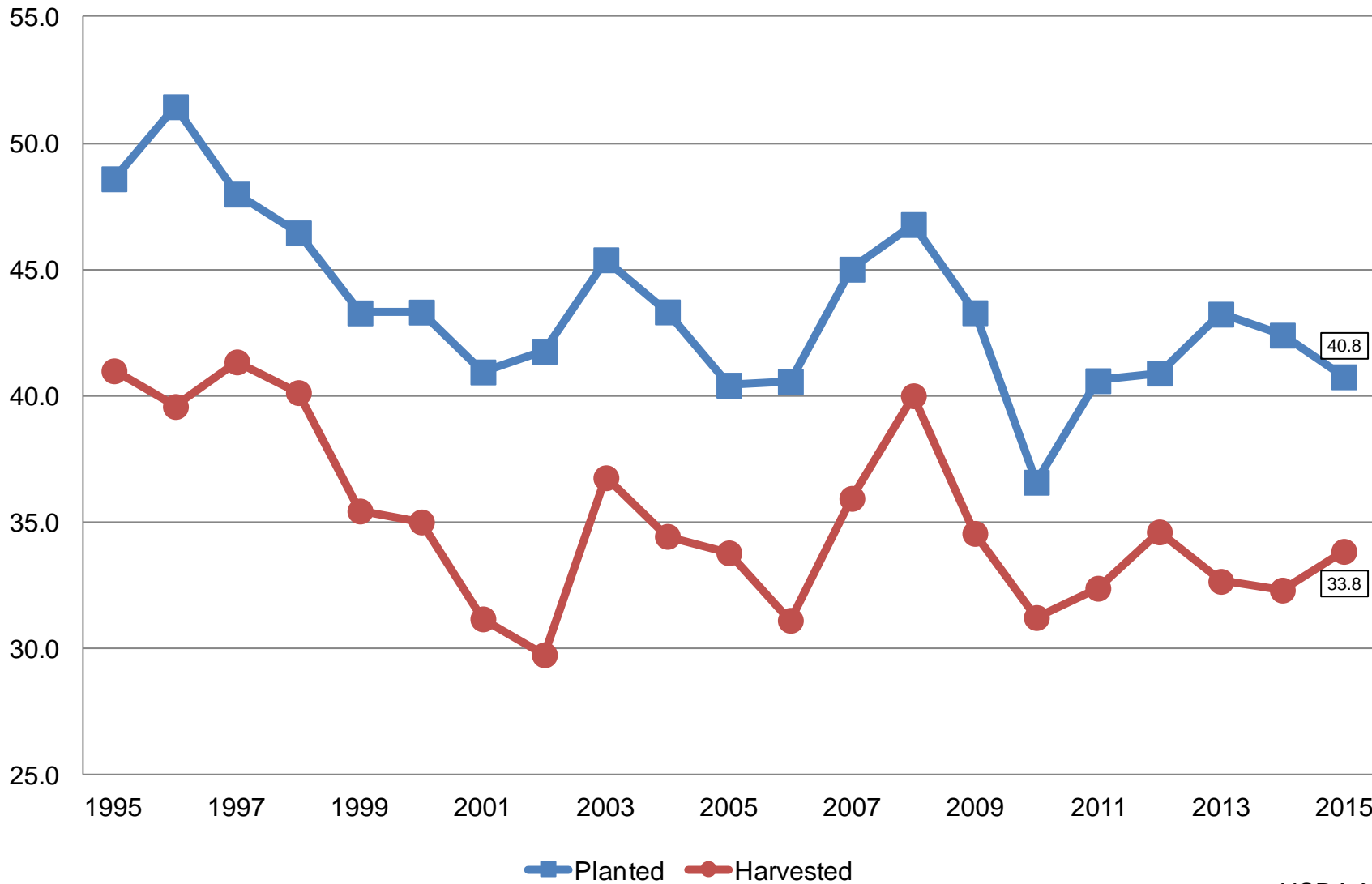
May 2015 Crop Production

Crop	Unit	May 2015	% Change From Previous Forecast	% Change From Previous Season
Wheat, Winter				
Harvested	Mil Ac	33.8	NA	+4.7
Yield	Bu/Ac	43.5	NA	+2.1
Production	Bil Bu	1.47	NA	+6.8

Winter Wheat Acres

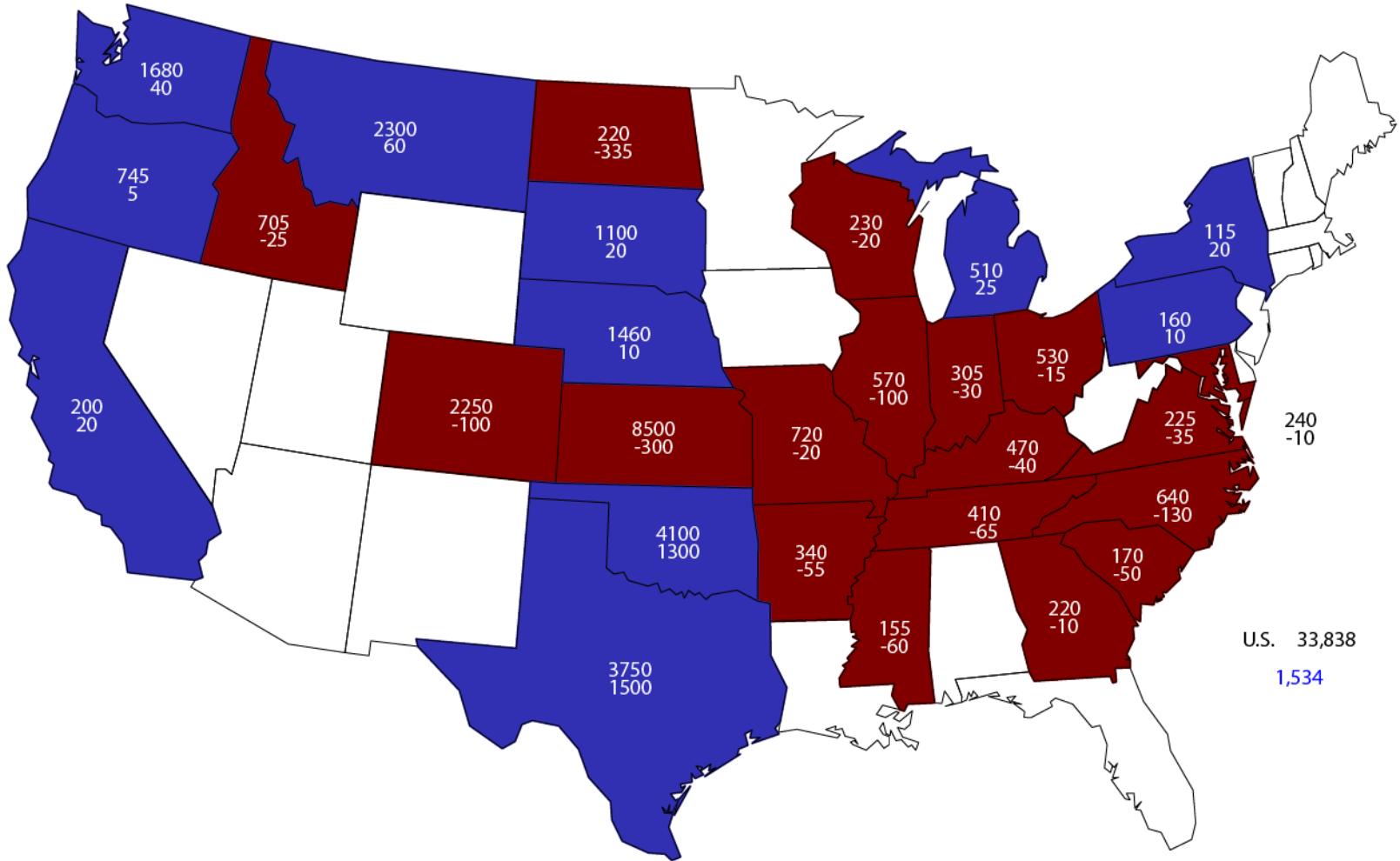
United States

Million Acres



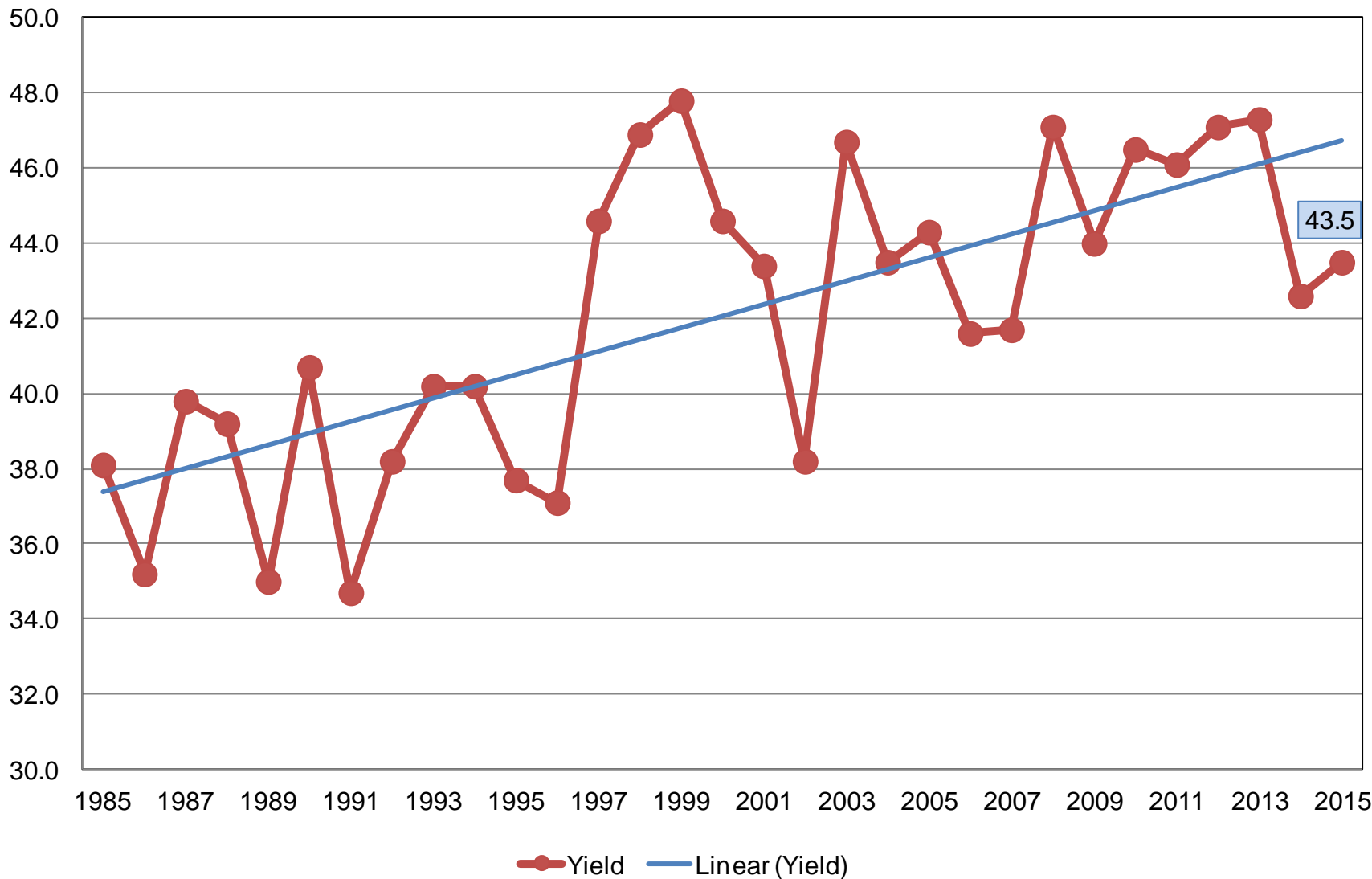
2015 Winter Wheat Harvested Area

(000) Acres and Change From Previous Year



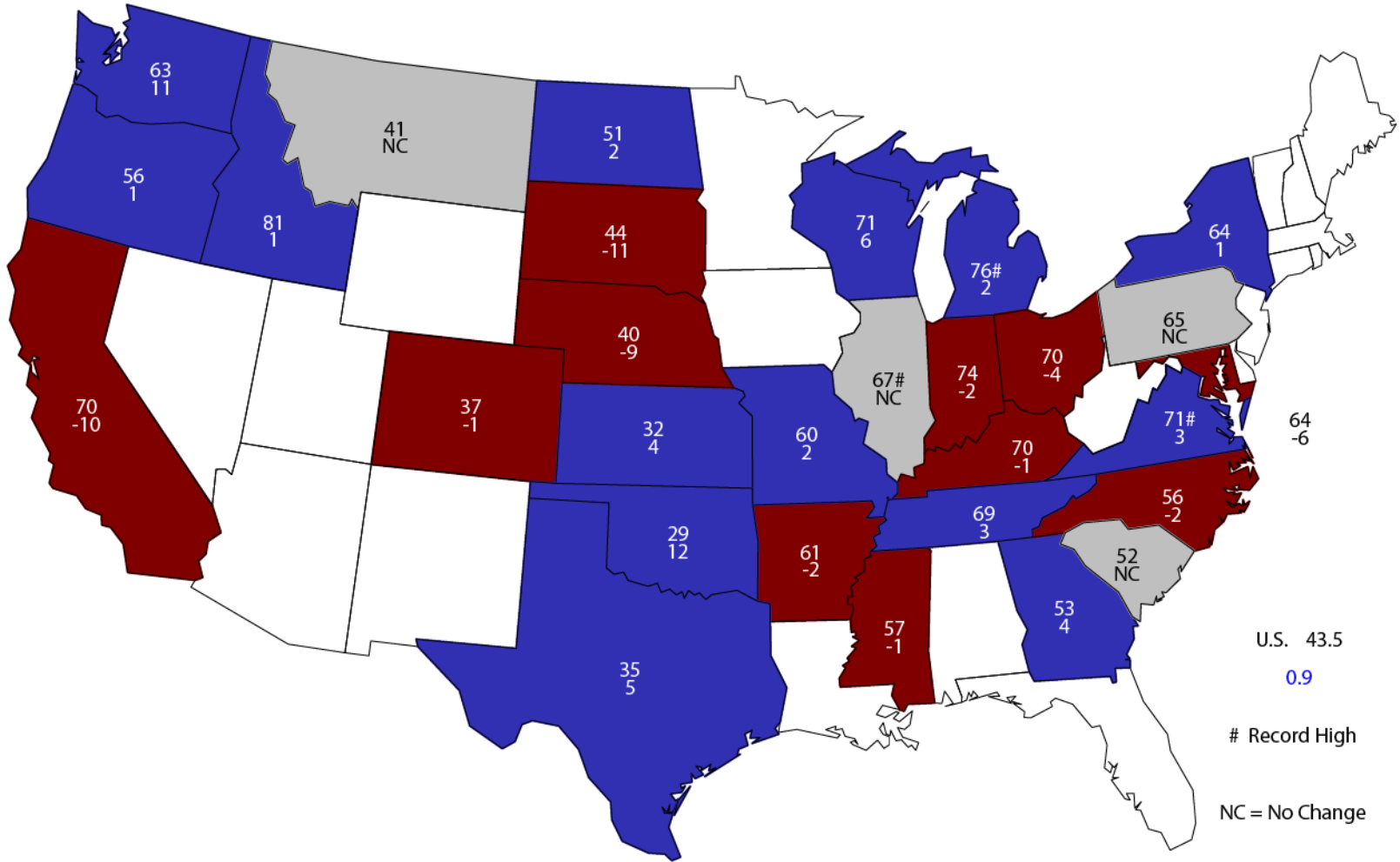
Winter Wheat Yield United States

Bushels per Acre



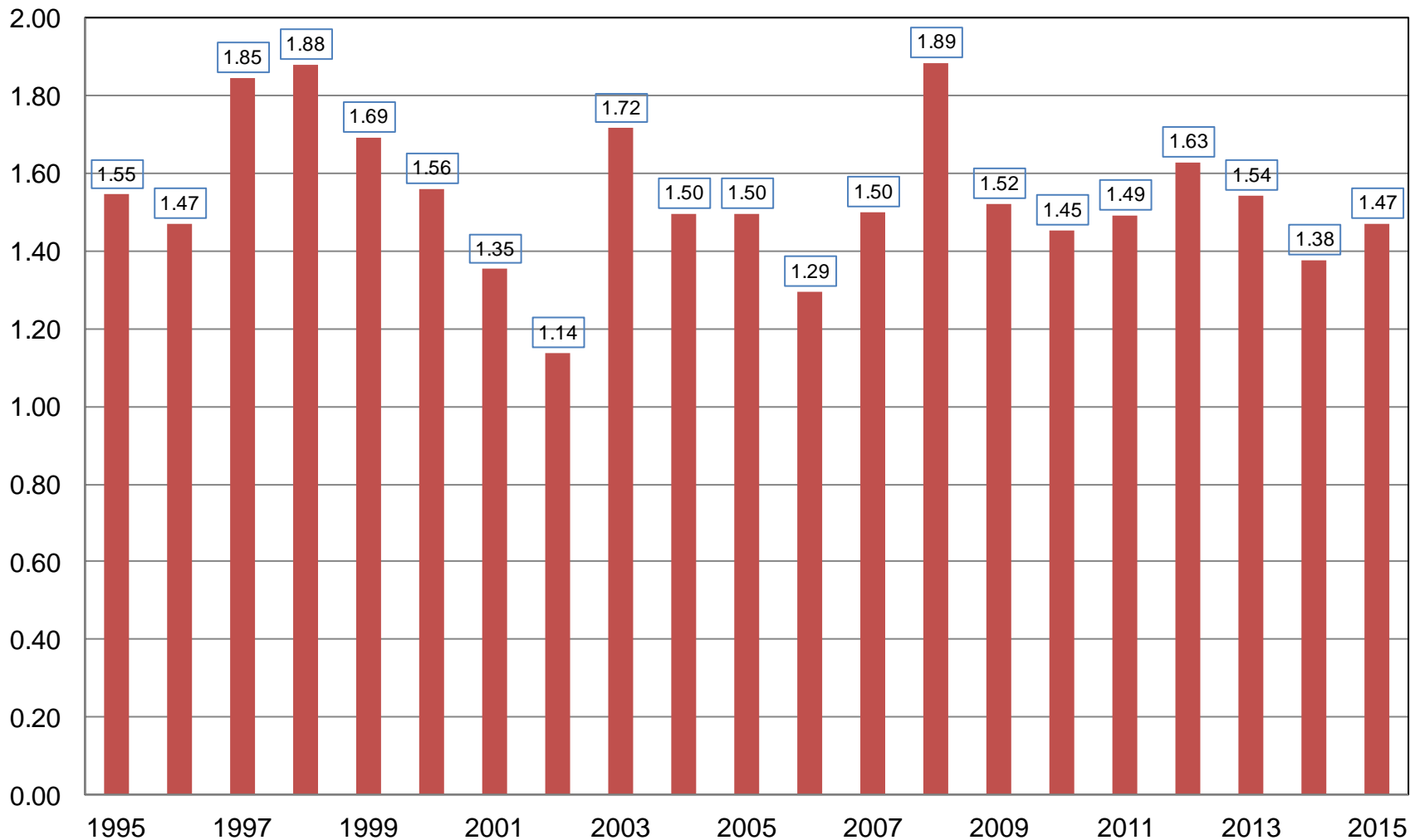
2015 Winter Wheat Yield

Bushels and Change From Previous Year



Winter Wheat Production United States

Billion Bushels



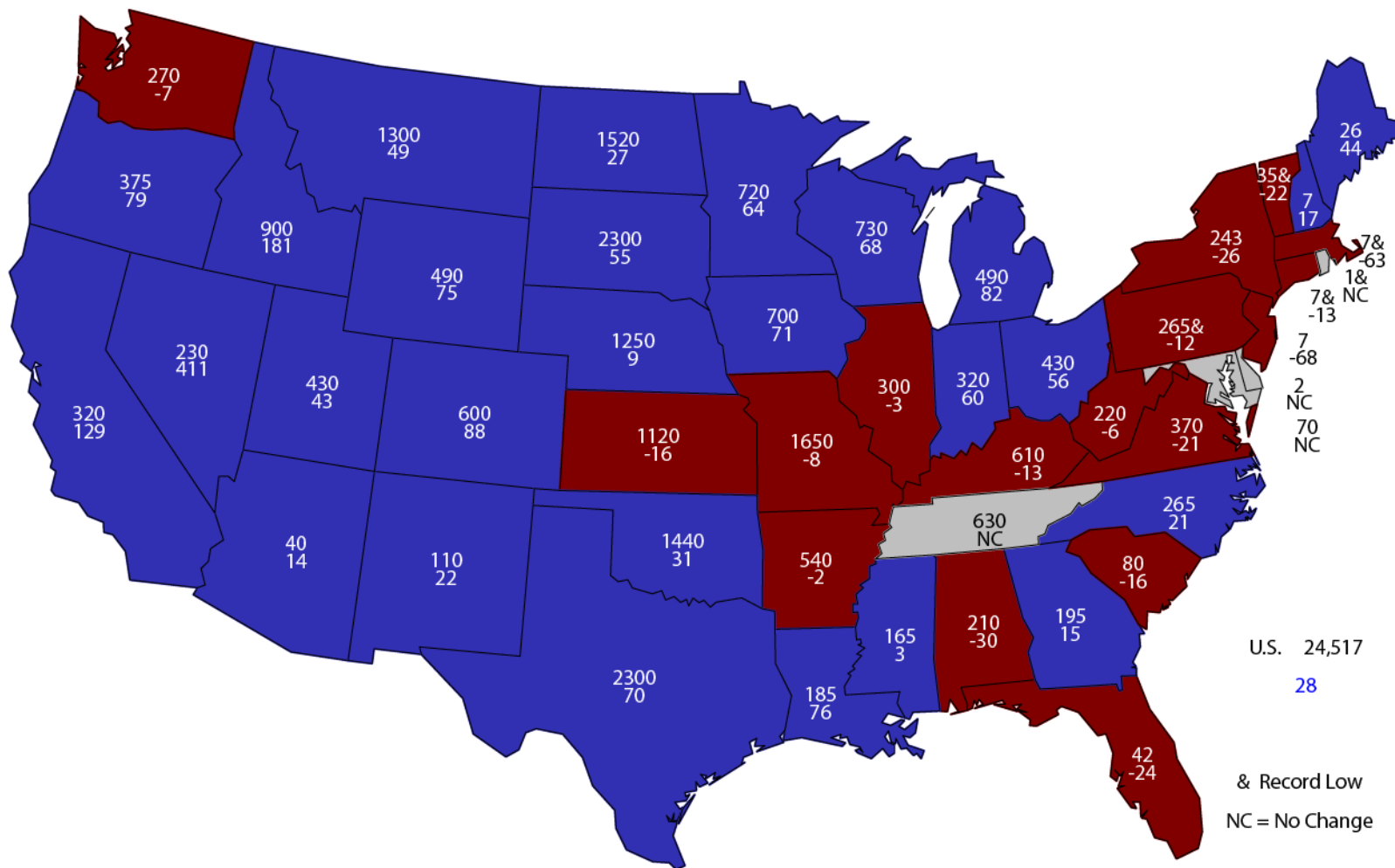


May 2015 Crop Production

Crop	Unit	May 2015	% Change From Previous Forecast	% Change From Previous Season
All Hay				
Stocks	Mil Tons	24.5	NA	+27.9

May 1, 2015 Hay Stocks

(000) Tons and Percent Change From Previous Year



U.S. 24,517
28

& Record Low
NC = No Change



Survey Overview

Florida Citrus

	Objective Surveys (Size and Drop)	Fruit Maturity	Row Count
Survey Type	Field Observations	Laboratory Tests	Field Observations
Crops Included	Valencias	Valencias	Oranges, Grapefruit, Late Tangerines
Sample Size	682 Groves	72 Samples	170,524 Rows
Collection Period	Apr. 22-29	May 4-5	May 4-5
Test Period		May 6	



May 2015 Crop Production

Crop	Unit	May 2015	% Change From Previous Forecast	% Change From Previous Season
Production				
Oranges	Mil Tons	6.43	-3.8	-4.9
Grapefruit	Thou Tons	980	-0.5	-6.4
Tangelos	Thou Tons	32.0	NC	-20.0
Tangerines & Mandarins	Thou Tons	758	NC	+3.3



May 2015 Crop Production

Crop	Unit	May 2015	% Change From Previous Forecast	% Change From Previous Season
Production				
Spring Potatoes	Mil Cwt	20.1	NA	-11.2
Almonds (CA)	Bil Lbs	1.85	NA	-1.1
Peaches (CA)	Thou Tons	566	NA	-8.1
Taro (Hawaii)	Mil Lbs	3.24	NC	+4.5



May 2015 Crop Production

Crop	Unit	May 2015	% Change From Previous Estimate	% Change From Previous Season
All Cotton				
Planted	Mil Ac	11.0	+<0.1	+6.1
Harvested	Mil Ac	9.35	-3.7	+23.9
Yield	Lb/Ac	838	+5.4	+2.1
Production	Mil Bls	16.3	+1.5	+26.4



May 2015 Crop Production

Crop	Unit	May 2015	% Change From Previous Estimate	% Change From Previous Season
All Tobacco				
Harvested	Thou Ac	378	NC	+6.4
Yield	Lbs/Ac	2316	NC	+13.9
Production	Mil Lbs	876	NC	+21.1



Upcoming Reports

Release Date	Report Title
May 22	Cattle on Feed
May 28	Agricultural Prices
June 1	CAIR: Cotton CAIR: Grain Crushings
June 4	Floriculture Crops
June 10	Crop Production
June 26	Quarterly Hogs and Pigs
June 30	Acreage Grain Stocks Rice Stocks



United States Department of Agriculture
National Agricultural Statistics Service

All Reports Available At
www.nass.usda.gov

For Questions
202-720-2127
800-727-9540
nass@nass.usda.gov