



United States Department of Agriculture
National Agricultural Statistics Service



Hogs & Pigs Inventory
December 1, 2015

Executive Briefing



Survey Overview



December Hogs & Pigs

Data Collection Period

November 30 – December 14

Sample Size

11,116

Collection Methods

Mail, Telephone, Internet, Face-to-Face Interview

Primary Data Items

Total Inventory: by class, weight group, and quarter
sows farrowing, pig crop, and pigs per litter



U.S. Hogs and Pigs Revisions



Survey	Item	Initial Estimate (1,000 head)	Previous Revision (1,000 head)	Current Revision (1,000 head)	Net Revision (1,000 head)	Current Estimate (1,000 head)
June 1, 2015	All Hogs and Pigs	66,900	0 0.0%	+165 +0.2%	+165 +0.2%	67,065
	Pig Crop	29,563		+30 +0.1%		29,593
September 1, 2015	All Hogs and Pigs	68,395		-220 -0.3%		68,175



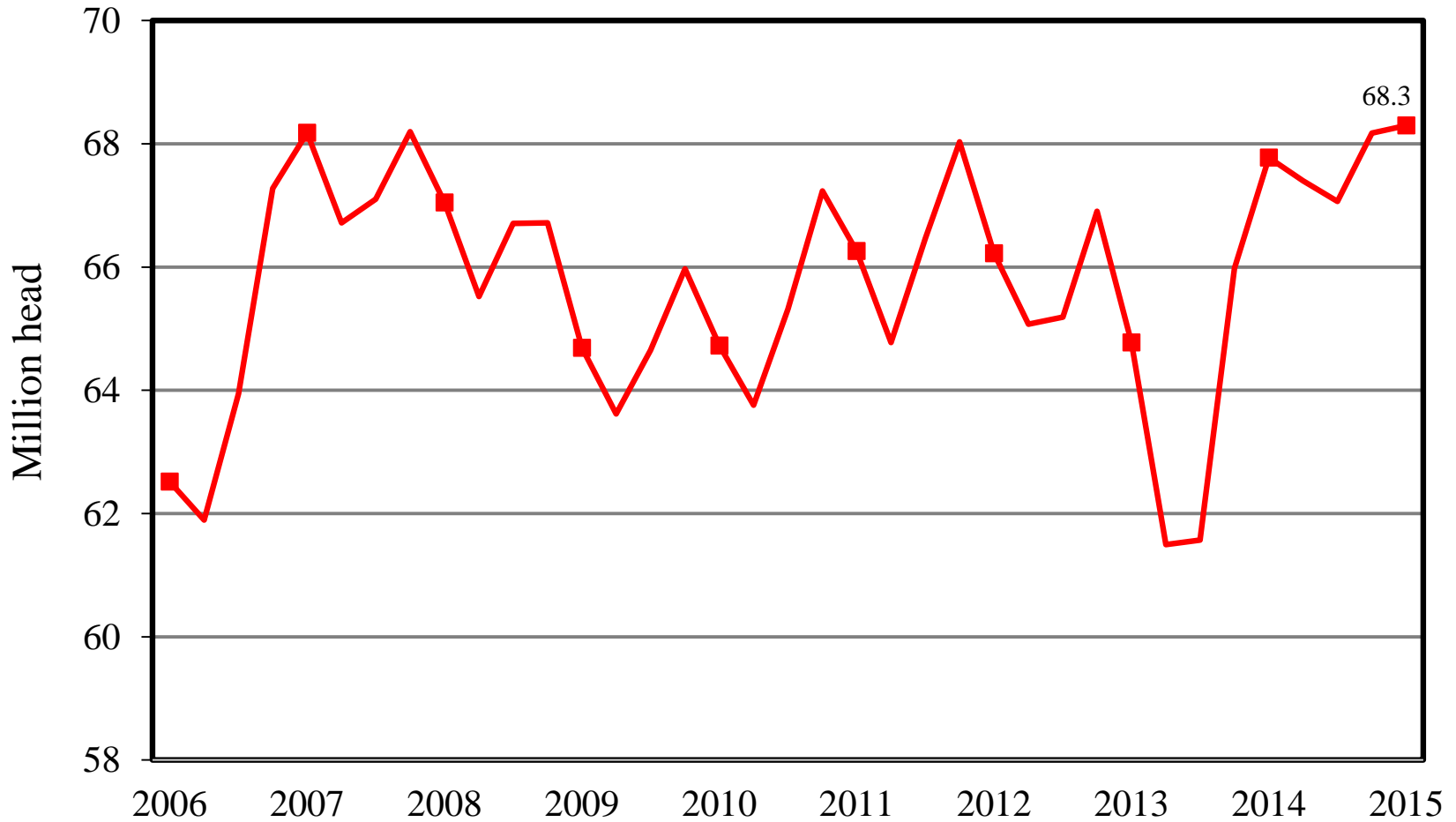
U.S. Hogs & Pigs December 1



Items	2014	2015	% PY
	1,000 head		
All Hogs & Pigs	67,776	68,299	101
Breeding Hogs	5,939	6,002	101
Market Hogs	61,838	62,297	101
180 lbs & over	11,671	12,296	105
120-179 lbs	13,000	13,210	102
50-119 lbs	17,366	17,282	100
less than 50 lbs	19,801	19,508	99
Sows Farrowed	2,994	2,875	96
Pig Crop	30,633	30,271	99
	number		
Pigs per Litter	10.23	10.53	103
	1,000 head		
December-February Farrowings	2,895	2,840	98
March-May Farrowings	2,854	2,850	100

U.S. Quarterly Hogs & Pigs

2006 - 2015





NASS Estimates Compared to Trade Expectations Percent of Previous Year

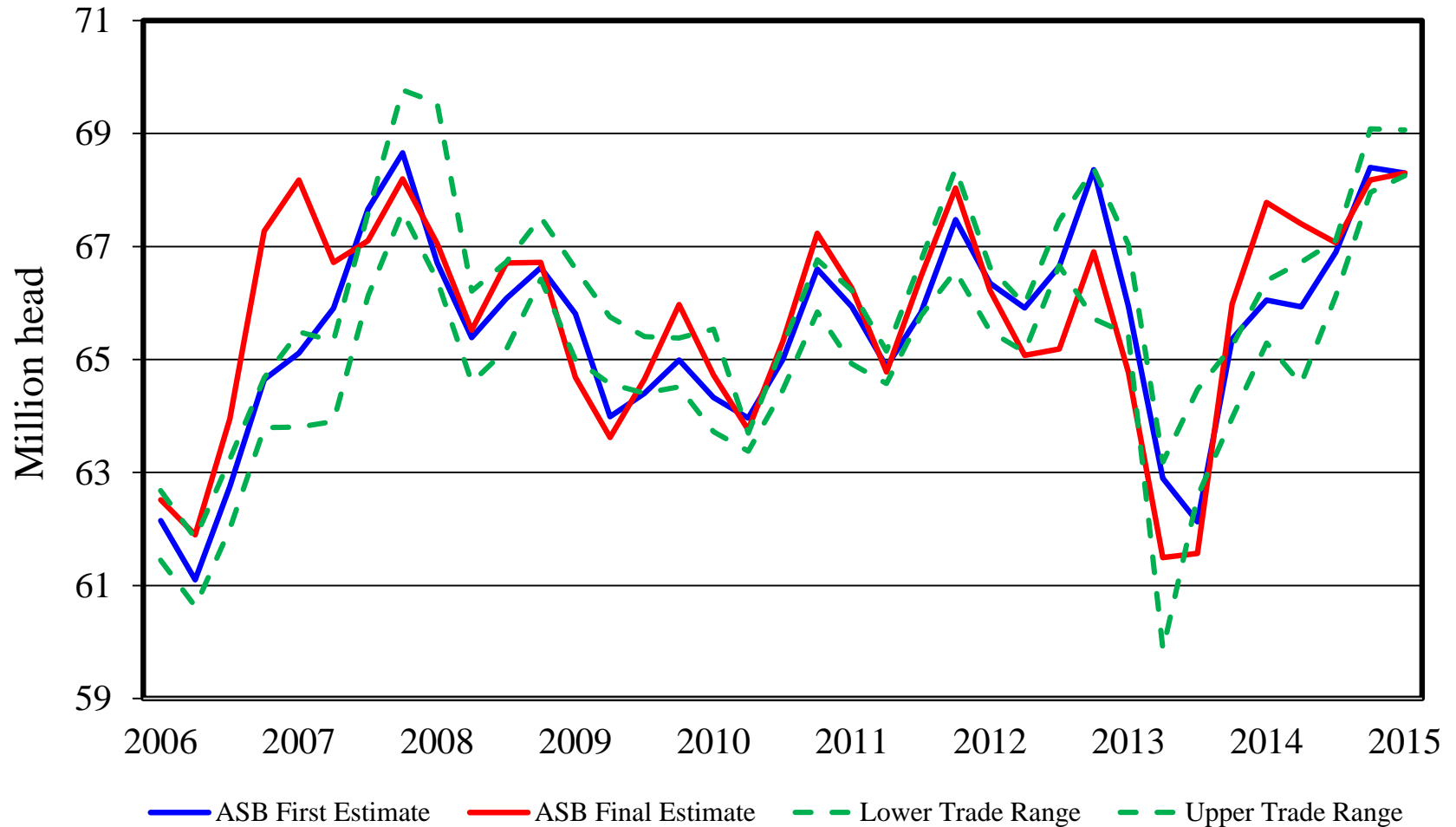


Inventory Items	NASS Estimate	Trade Average	Trade Range
All Hogs & Pigs	100.8%	101.4%	100.7% – 101.9%
Breeding Hogs	101.1%	100.9%	100.0% – 102.1%
Market Hogs	100.7%	101.5%	100.7% – 102.2%
Sep – Nov Pig Crop	98.8%	99.7%	99.2% – 100.2%
Farrowing Intentions			
Dec 2015 – Feb 2016	98.1%	99.6%	98.6% – 100.3%
Mar – May 2016	99.9%	100.5%	98.5% – 103.3%

All Hogs and Pigs

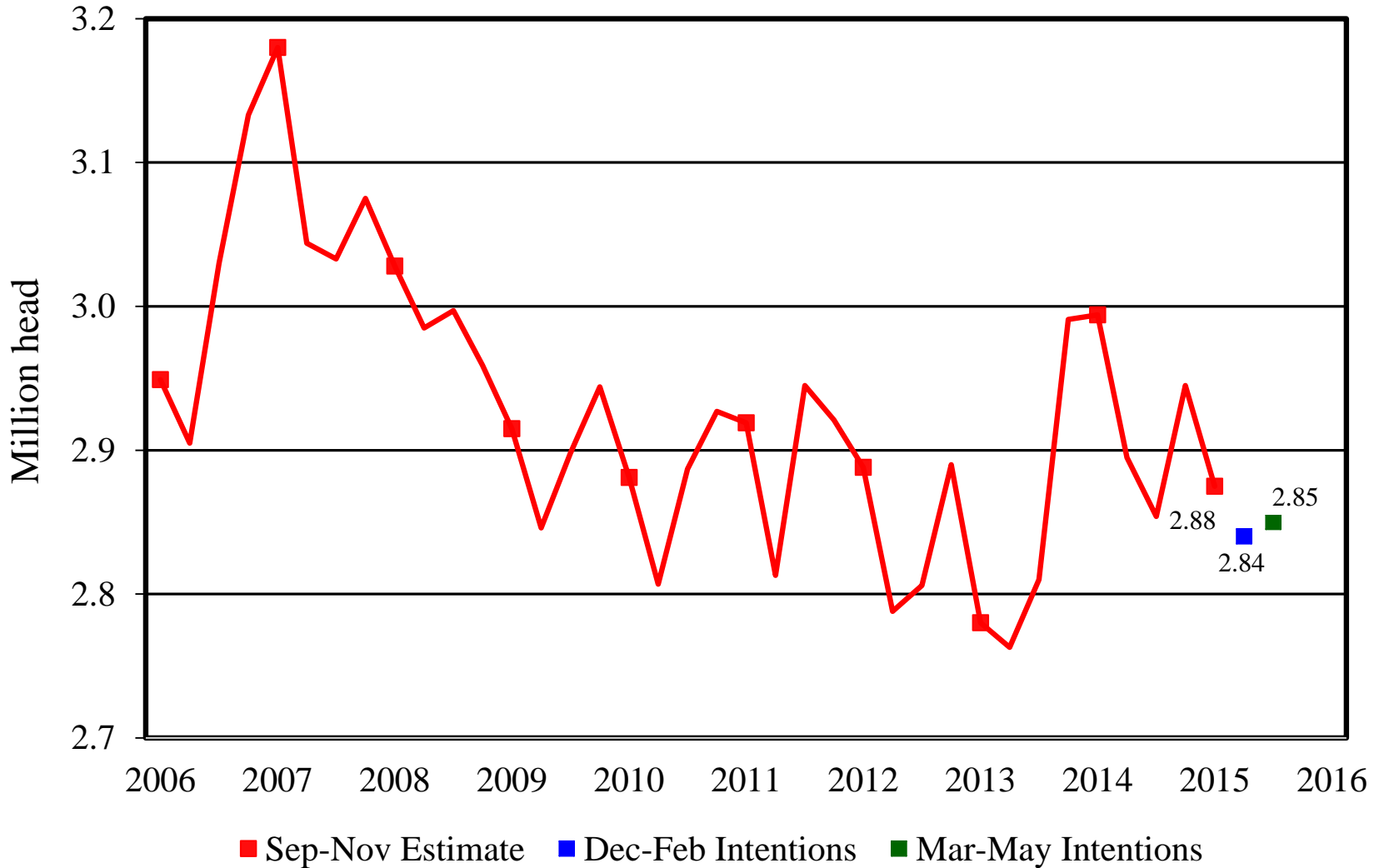
First Estimate Versus Final Estimate

2006 - 2015



U.S. Quarterly Sows Farrowed

2006-2015





Breeding Herd Inventory

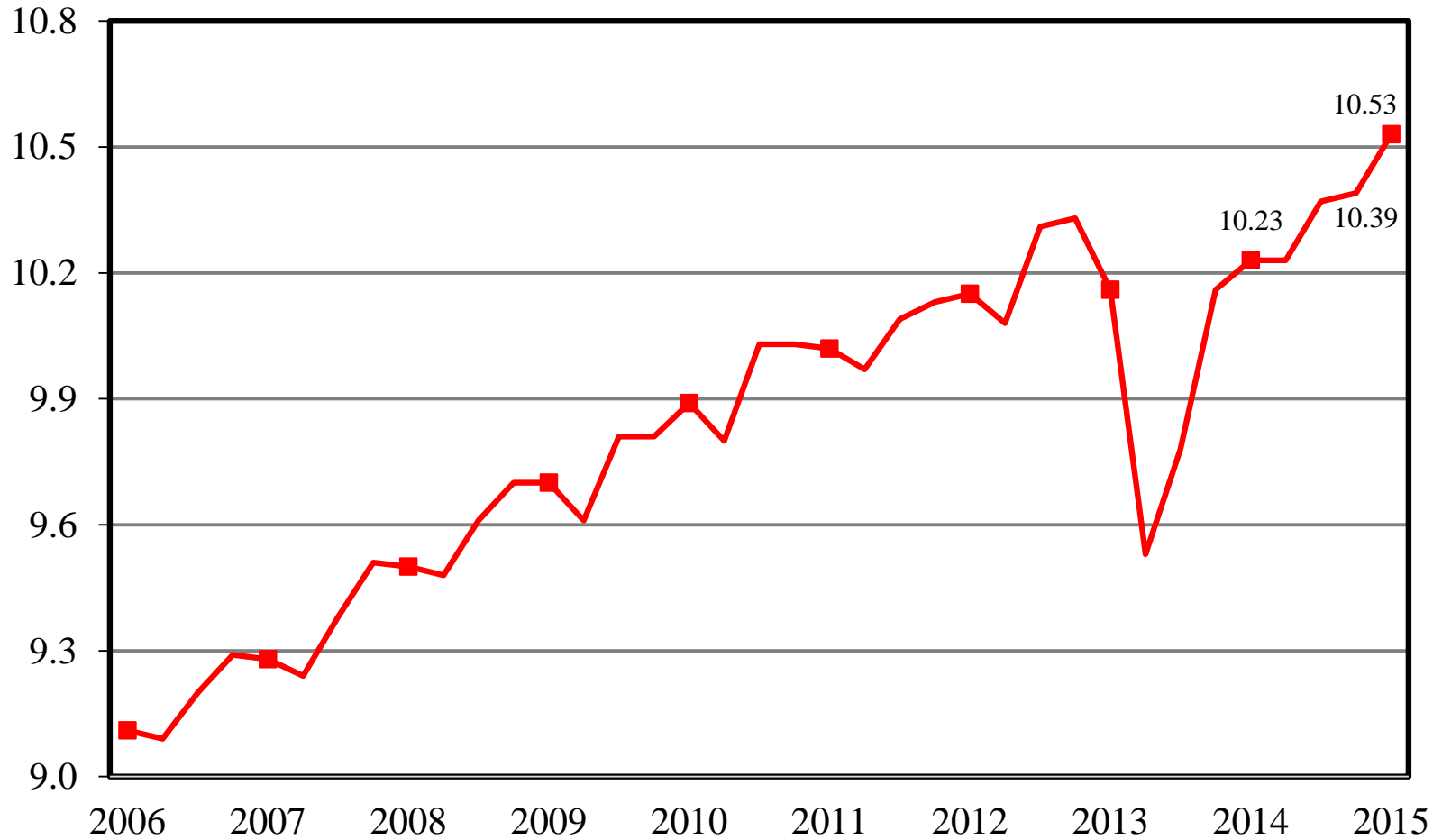
Disposition & Utilization



Year	Sep 1 Estimate (1,000 head)	Slaughter (1,000 head)	Additions (1,000 head)	Dec 1 Estimate (1,000 head)	Sow Utilization (Percent)
2006	6,099	947	965	6,116	48
2007	6,208	976	1,001	6,233	51
2008	6,061	964	965	6,062	50
2009	5,875	941	917	5,850	50
2010	5,770	849	858	5,778	50
2011	5,806	880	877	5,803	50
2012	5,788	887	918	5,819	50
2013	5,816	826	767	5,757	48
2014	5,920	801	821	5,939	51
2015	5,986	797	814	6,002	48

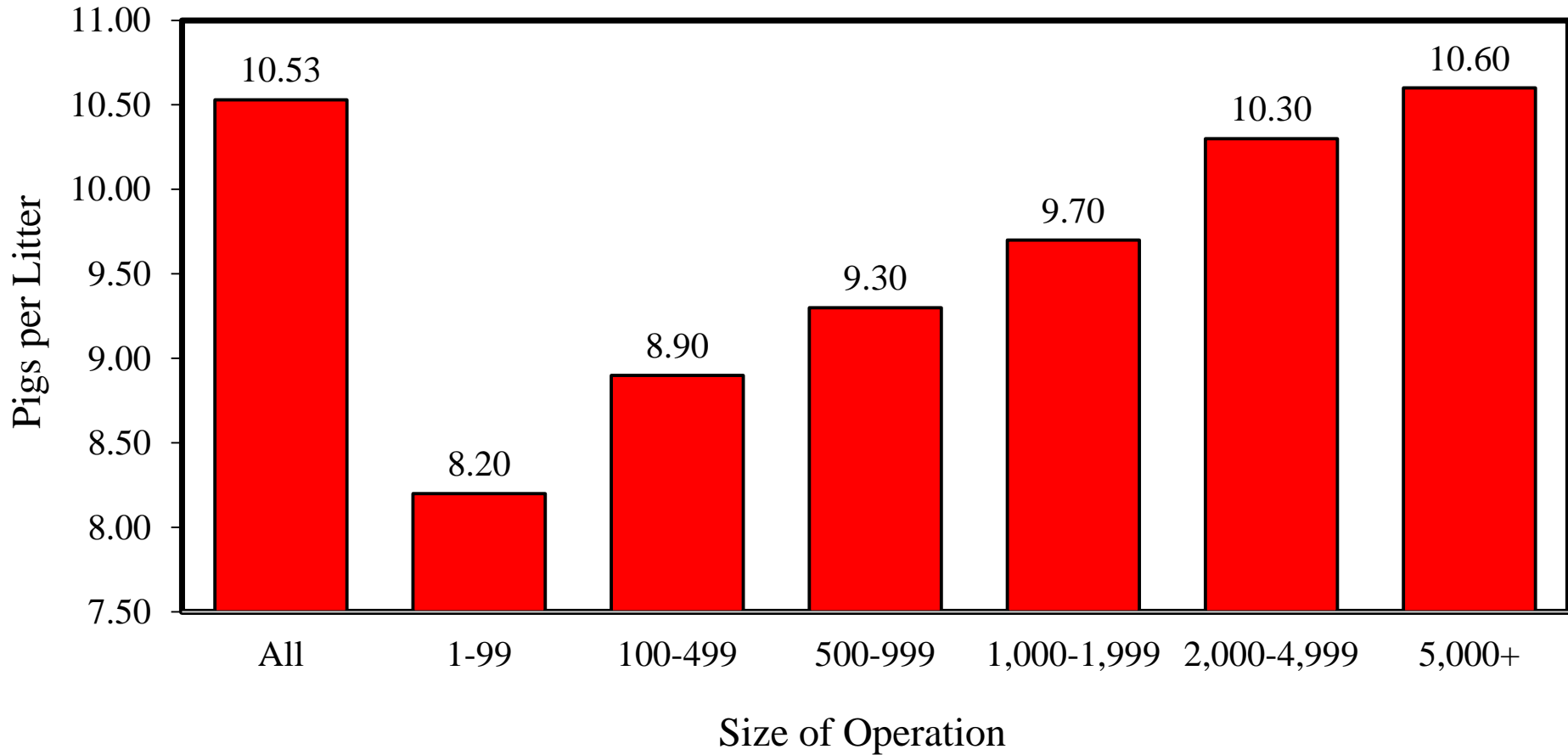
U.S. Quarterly Pigs per Litter

2006-2015



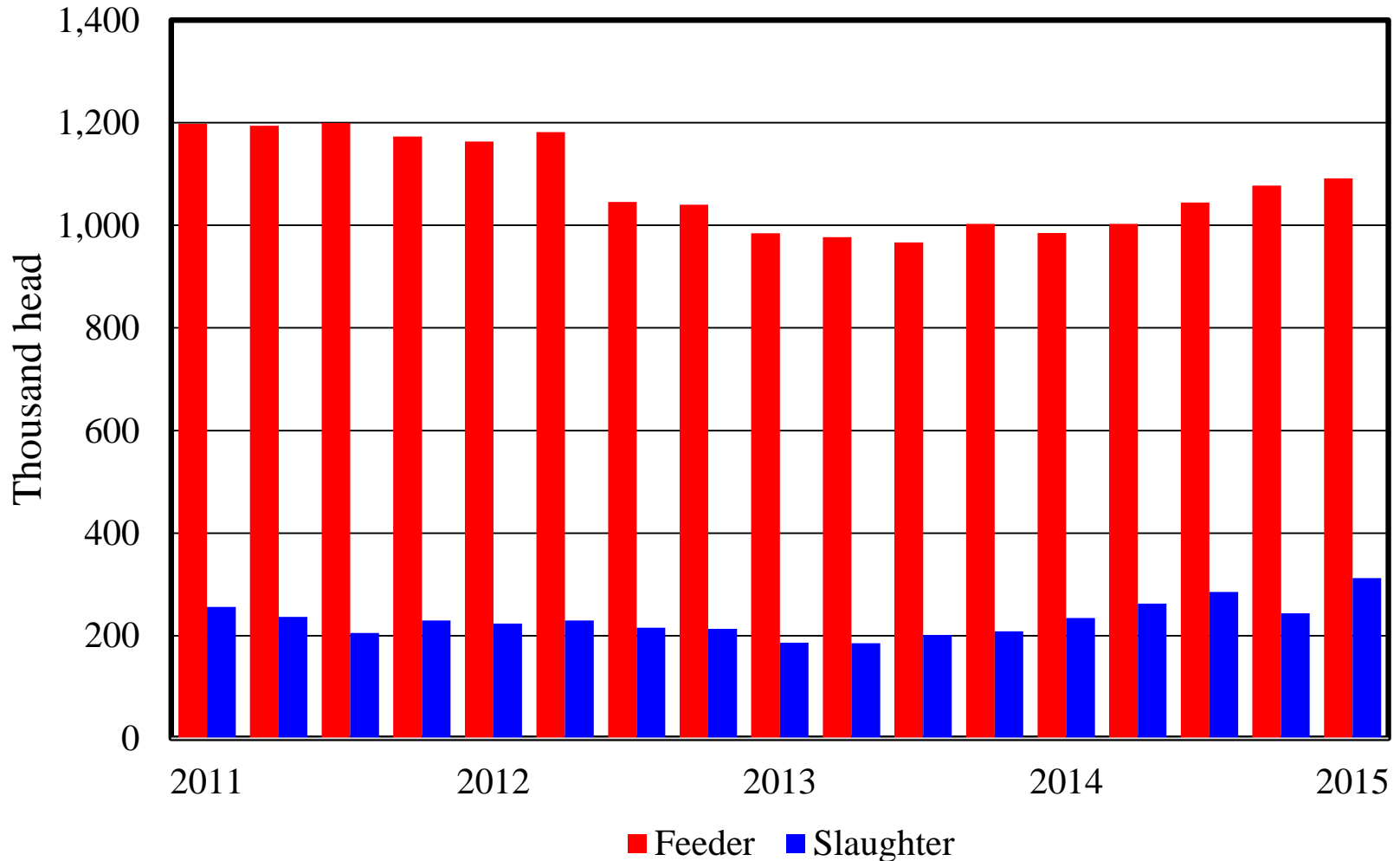
USDA U.S. Pigs per Litter by Size of Operation

September-November 2015

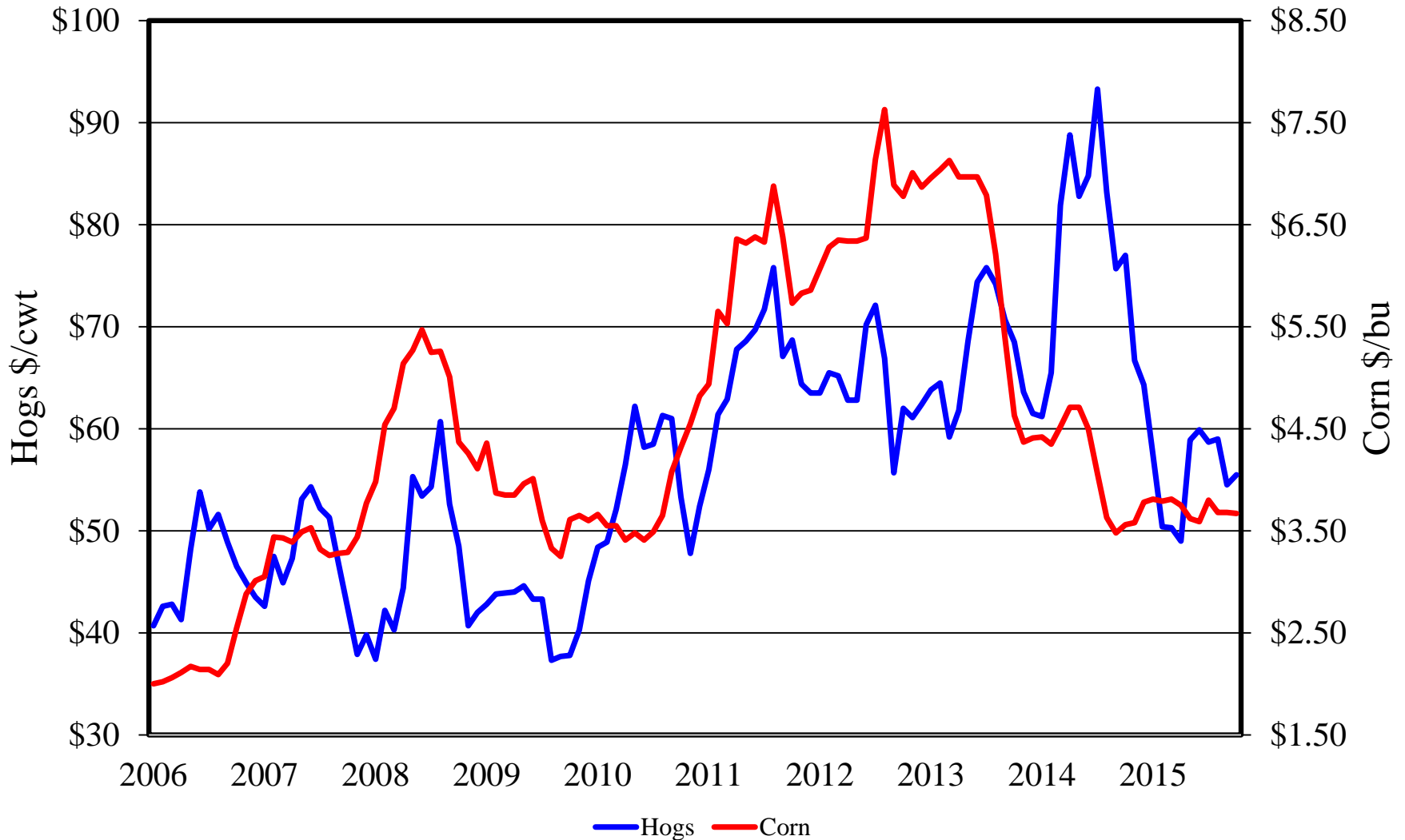


Canadian Imports by Quarter

Feeder Pigs and Slaughter Hogs



U.S. Prices Received by Farmers for Hogs & Corn





Upcoming NASS Reports



Release Date	Report Title
December 30	Agricultural Prices
January 4	Cotton System Consumption and Stocks Grain Crushings and Co-Products Production Fats and Oils: Oilseed Crushings, Production, Consumption and Stocks
January 12	Cotton Ginnings Grain Stocks Crop Production Crop Production – Annual
January 22	Cattle on Feed Milk Production
January 29	Cattle Sheep & Goats Agricultural Prices



United States Department of Agriculture
National Agricultural Statistics Service



All Reports Available At
www.nass.usda.gov

For Questions

(202) 720-3570

(800) 727-9540

nass@nass.usda.gov