



United States Department of Agriculture
National Agricultural Statistics Service

September Crop Production
Executive Summary

Lance Honig, Chief
Crops Branch



Contents

Field Crops	Fruit & Nuts	Specialty Crops
Corn	Navel Oranges (CA)	Tobacco
Soybeans	Hazelnuts	Sugarbeets
Cotton	Walnuts	Sugarcane
Rice		
Peanuts		
Sorghum		



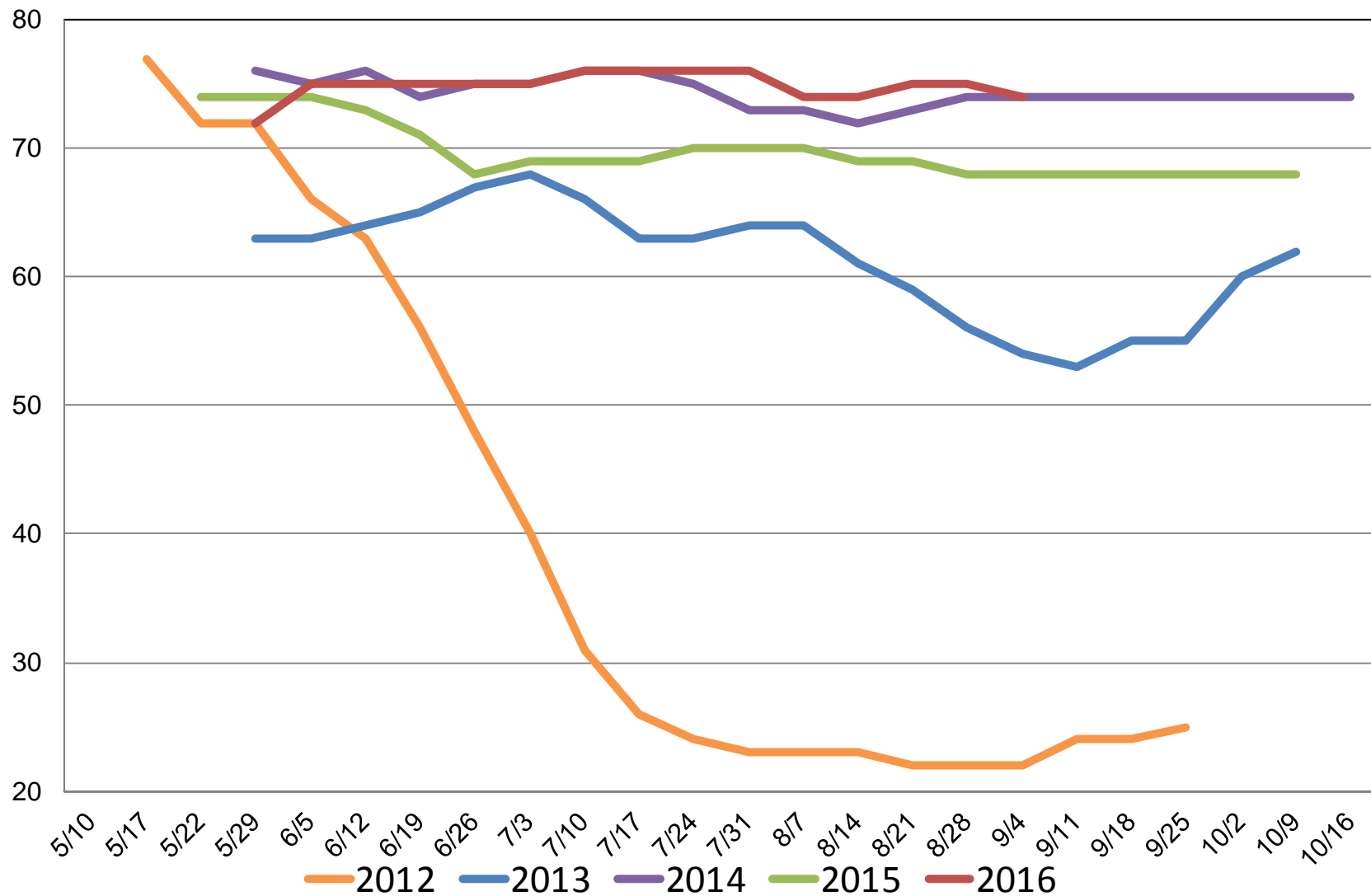
Survey Overview

	Ag Yield	Objective Yield
Survey Type	Farmer Reported	Field Measurement
Crops Included	Field Crops	Corn, Cotton, Soybeans
Sample Size	10,347	4,952
Collection Period	Aug 30 – Sep 7	Aug 25 – Sept 1

U.S. Corn Condition

Percent Rated Good to Excellent

Percent



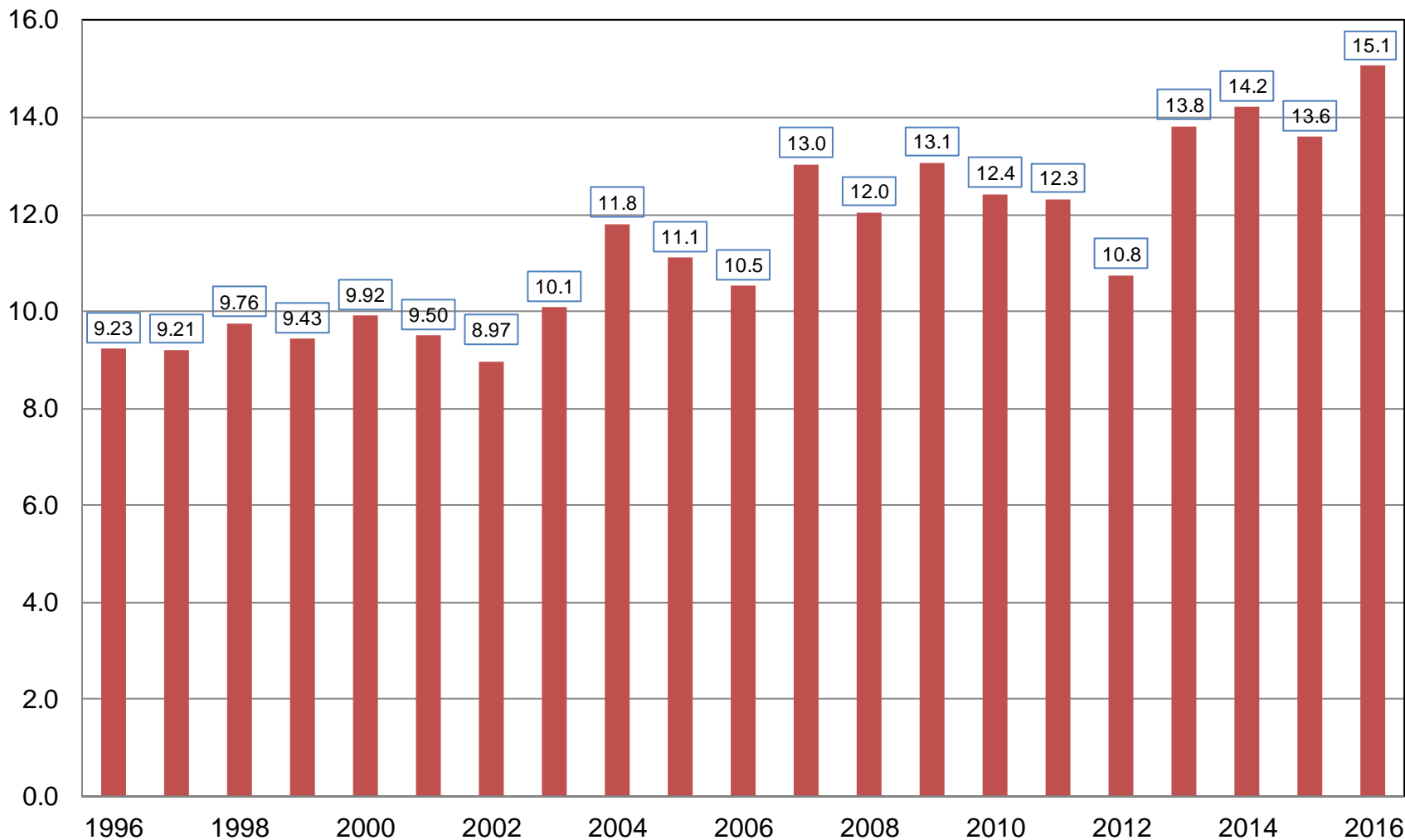


September 2016 Crop Production

Crop	Unit	September 2016	% Change From Previous Estimate	% Change From Previous Season
Corn				
Planted	Mil Ac	94.1	NC	+7.0
Harvested	Mil Ac	86.6	NC	+7.2
Yield	Bu/Ac	174.4	-0.4	+3.6
Production	Bil Bu	15.1	-0.4	+11.0

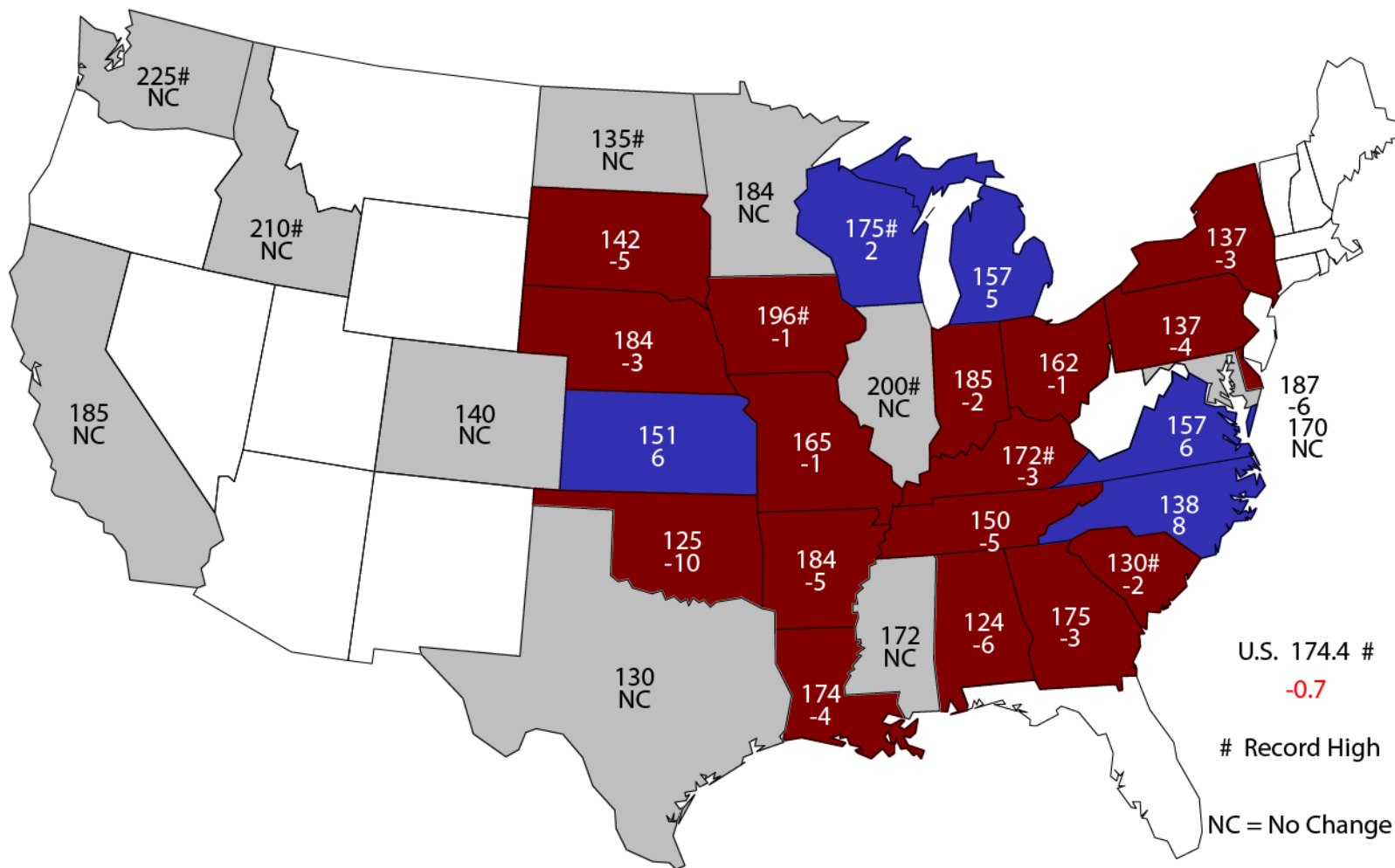
Corn for Grain Production United States

Billion Bushels



September 1, 2016 Corn Yield

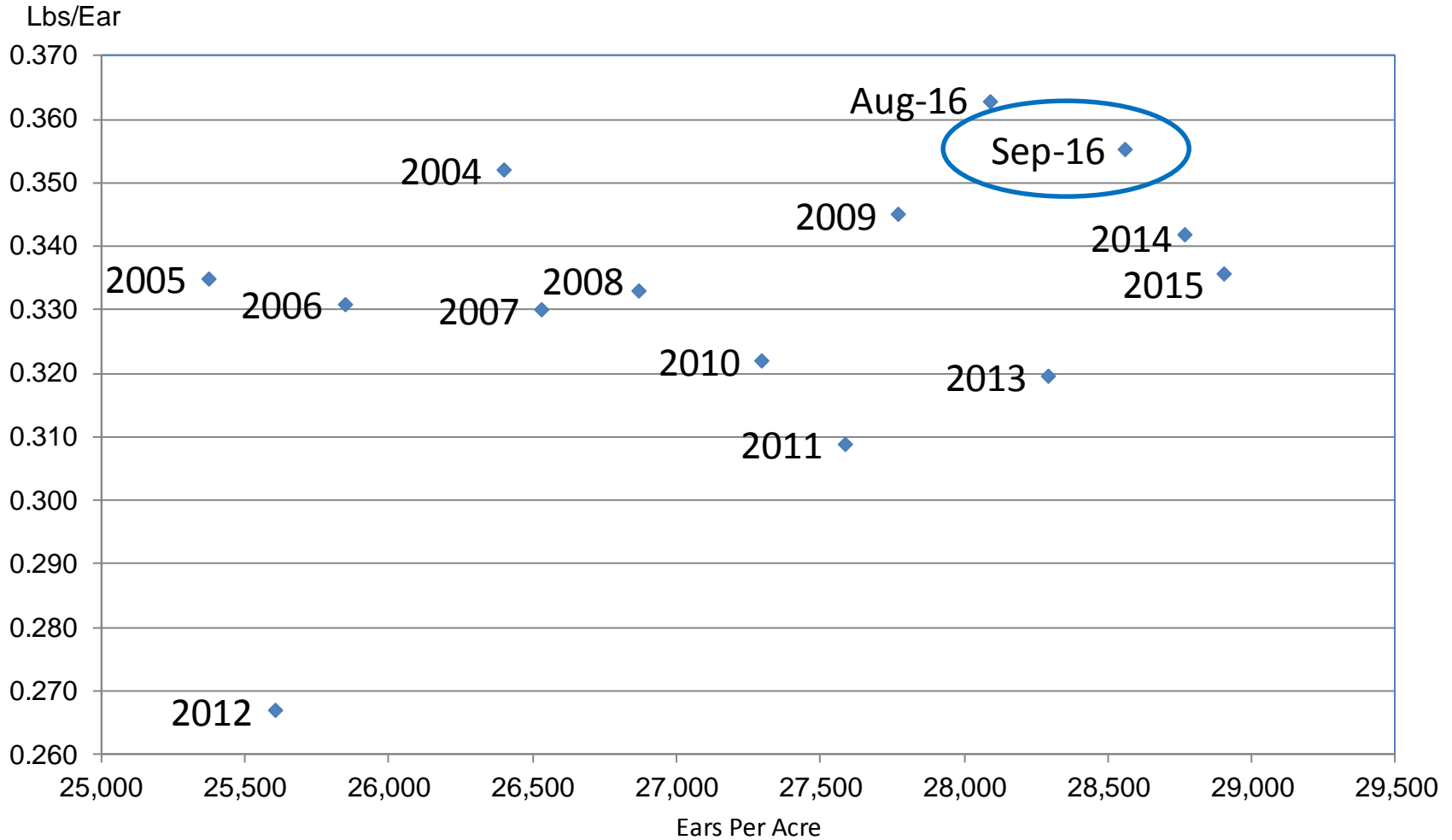
Bushels and Change From Previous Month



U.S. 174.4 #
 -0.7
 # Record High
 NC = No Change

Corn Objective Yield Region

Ears Per Acre vs. Implied Ear Weight



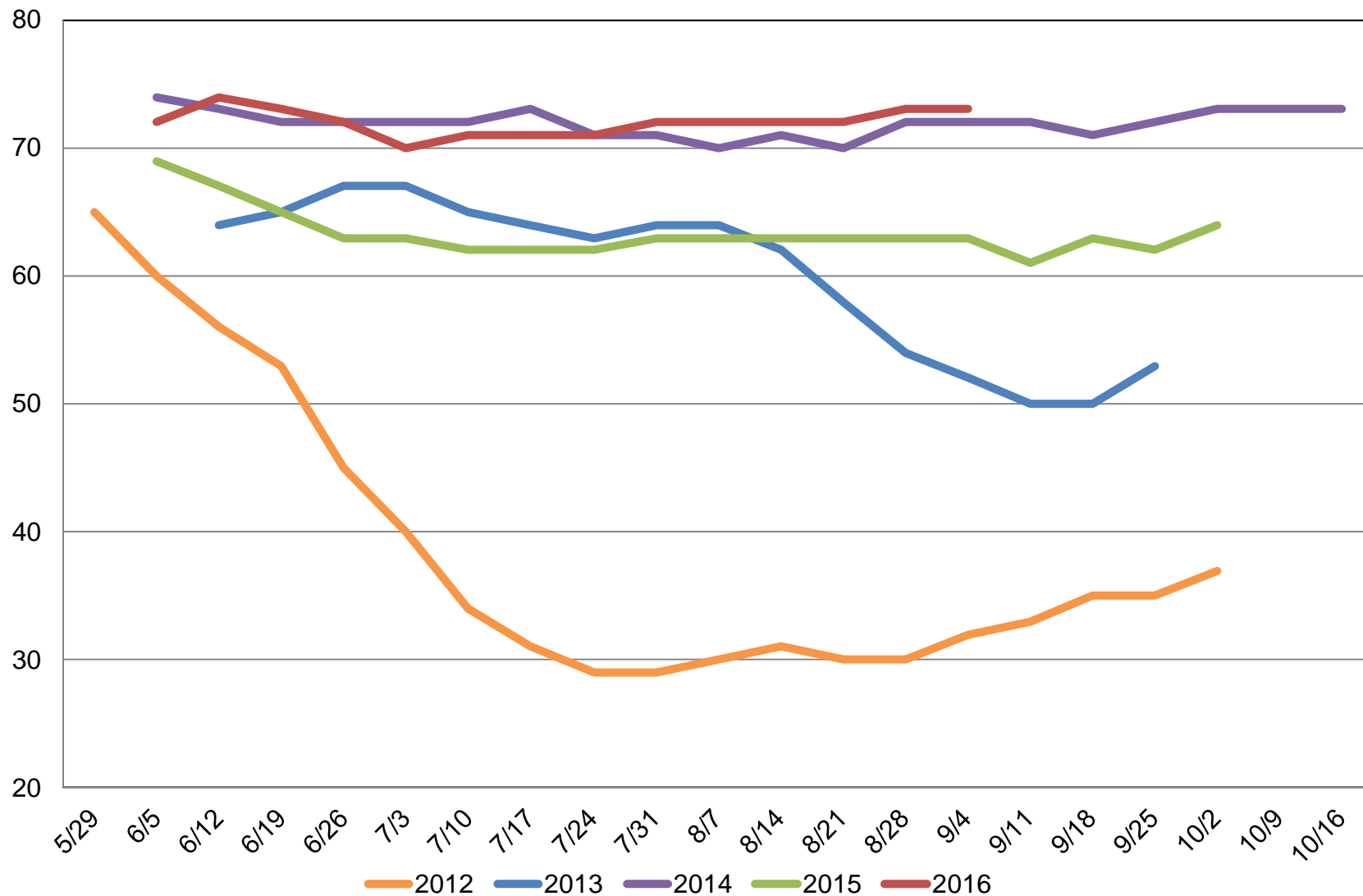
Implied Ear Weight = (Published Yield * 56) / Ears



U.S. Soybean Condition

Percent Rated Good to Excellent

Percent





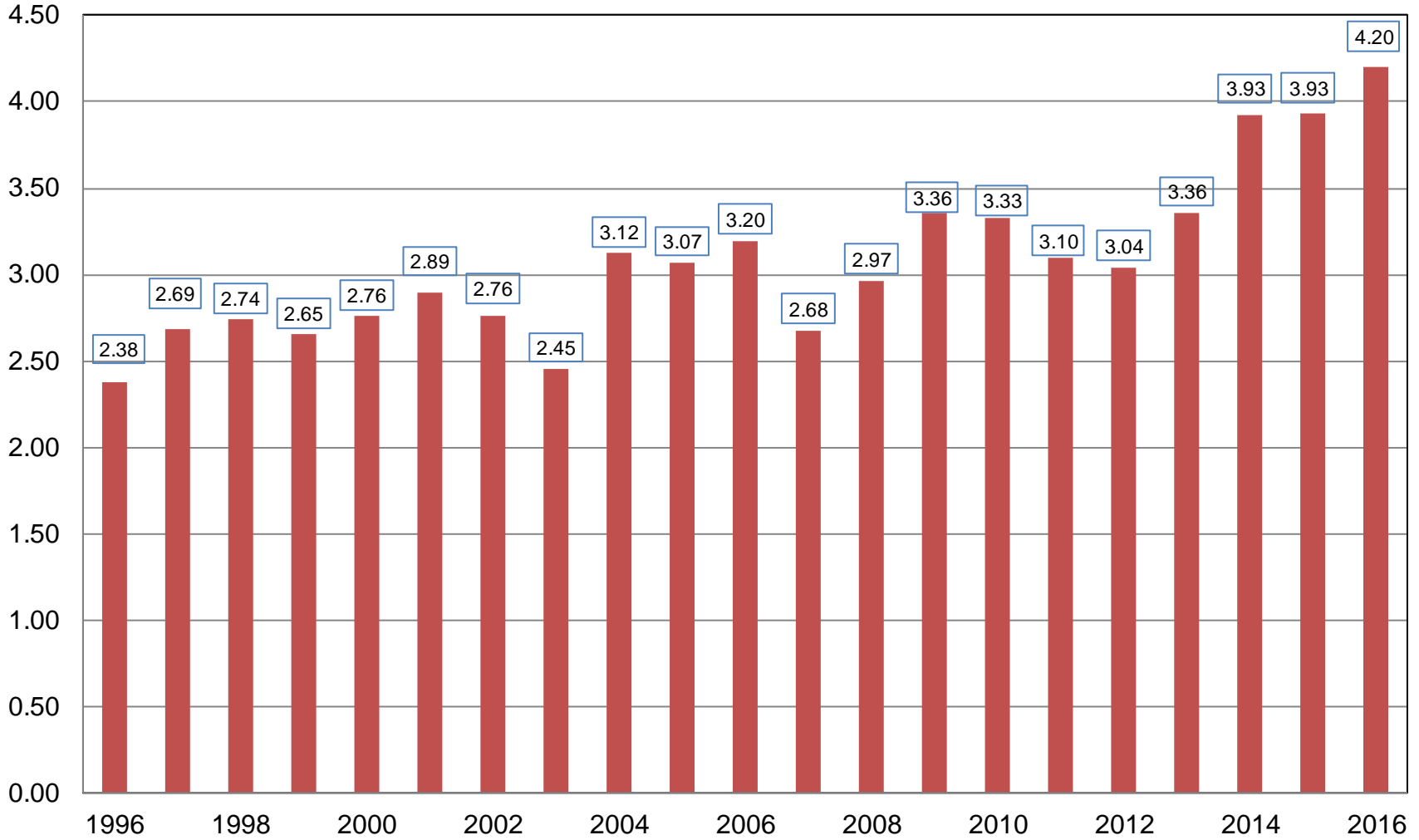
September 2016 Crop Production

Crop	Unit	September 2016	% Change From Previous Estimate	% Change From Previous Season
Soybeans				
Planted	Mil Ac	83.7	NC	+1.3
Harvested	Mil Ac	83.0	NC	+1.5
Yield	Bu/Ac	50.6	+3.5	+5.4
Production	Bil Bu	4.20	+3.5	+6.9



Soybean Production United States

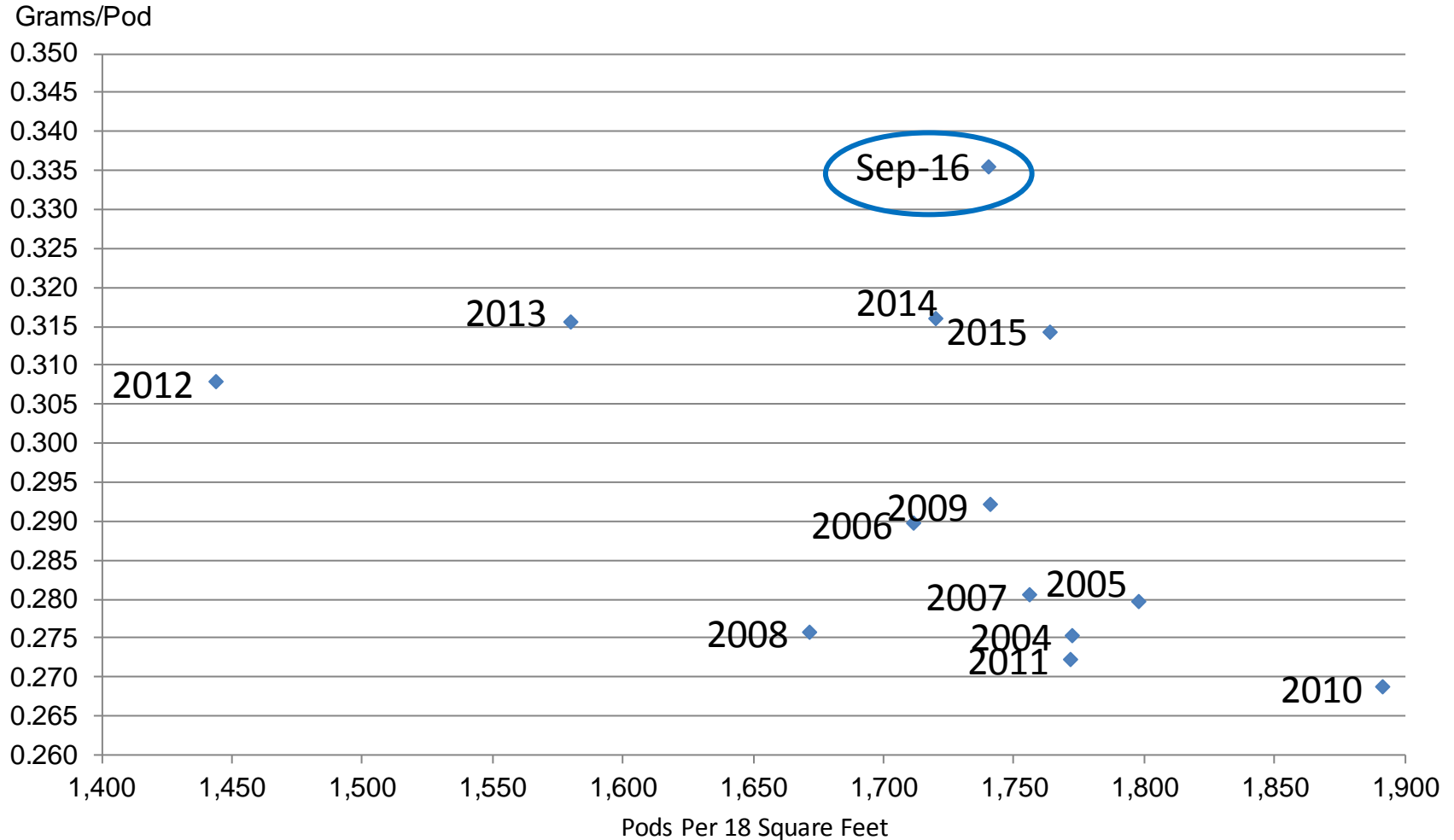
Billion Bushels





Soybean Objective Yield Region

Pods Per 18 Square Feet vs. Implied Pod Weight



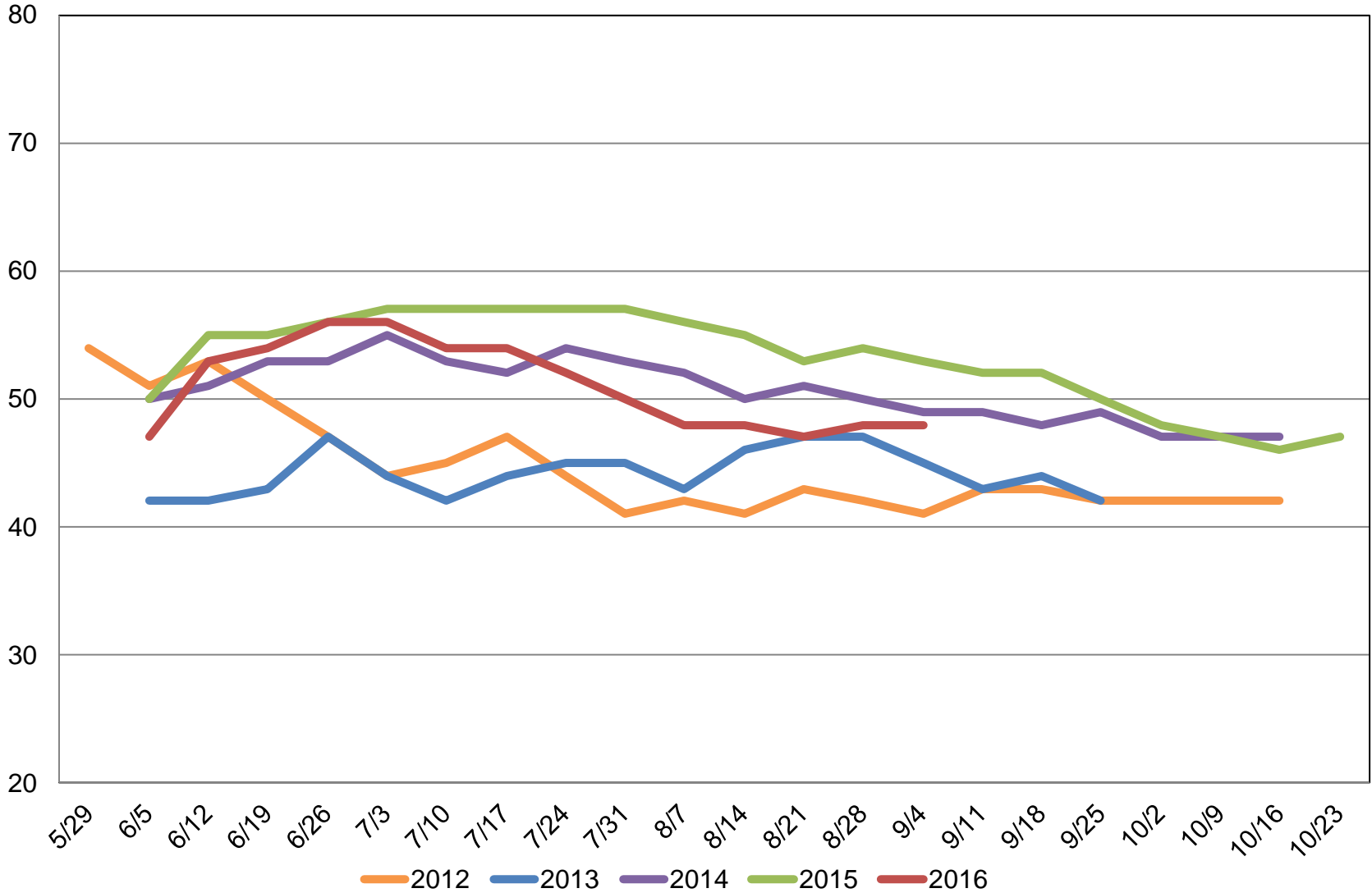
Implied Pod Weight = (Published Yield / Pods) / 0.0889



U.S. Cotton Condition

Percent Rated Good to Excellent

Percent





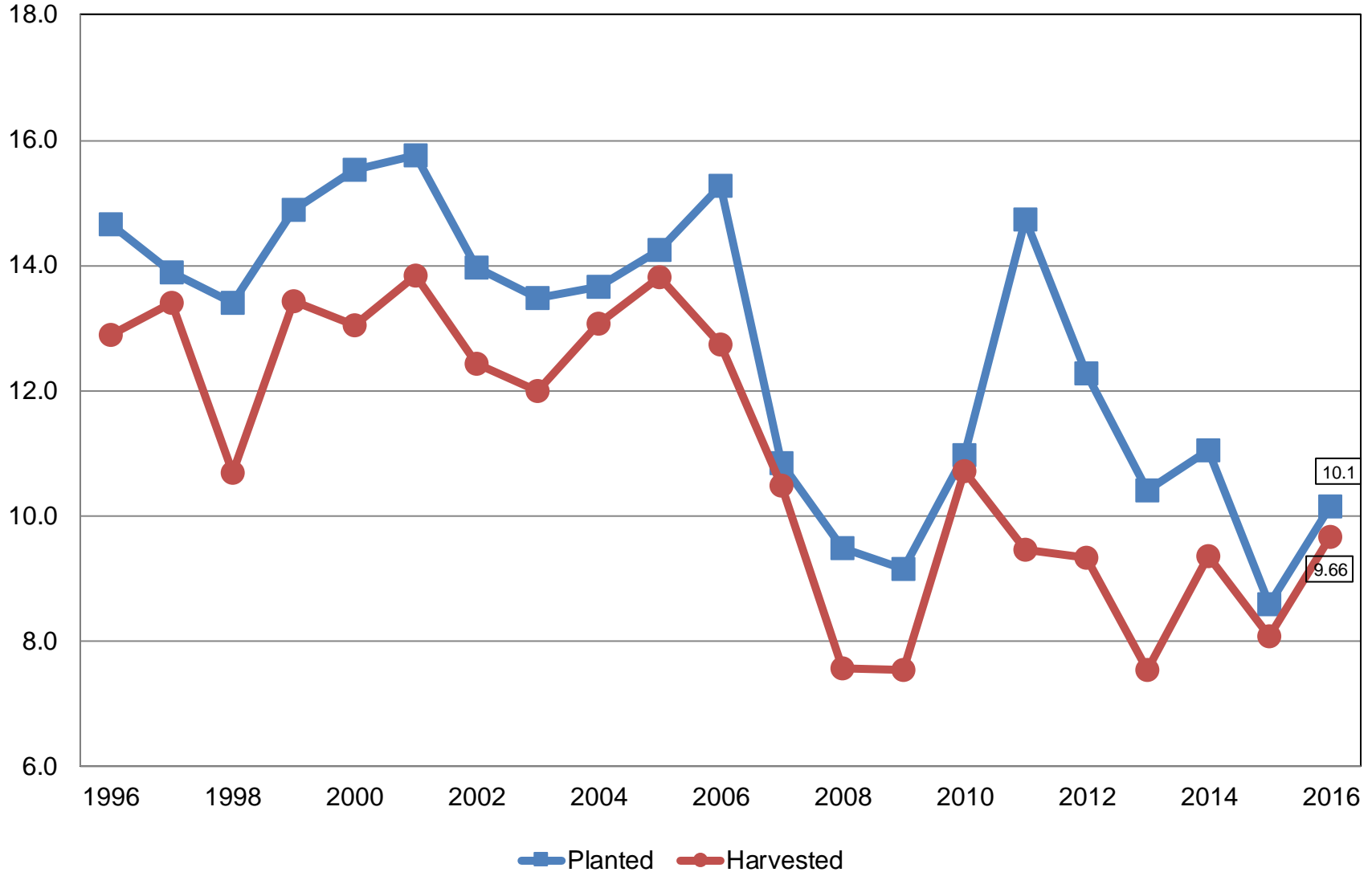
September 2016 Crop Production

Crop	Unit	September 2016	% Change From Previous Estimate	% Change From Previous Season
All Cotton				
Planted	Mil Ac	10.1	+1.2	+18.2
Harvested	Mil Ac	9.66	+1.3	+19.6
Yield	Lb/Ac	802	+0.3	+4.7
Production	Mil Bls	16.1	+1.7	+25.2



All Cotton Acres United States

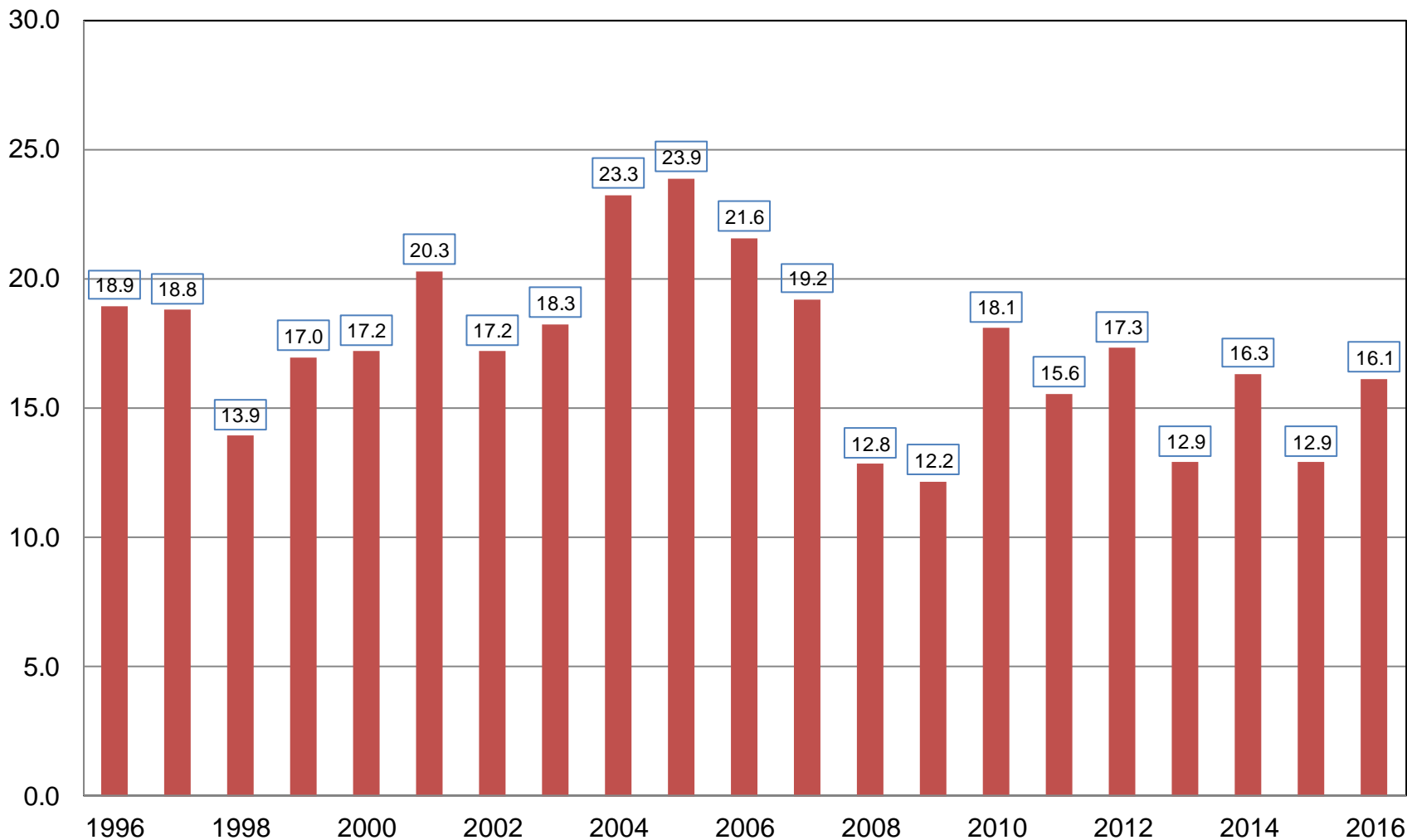
Million Acres





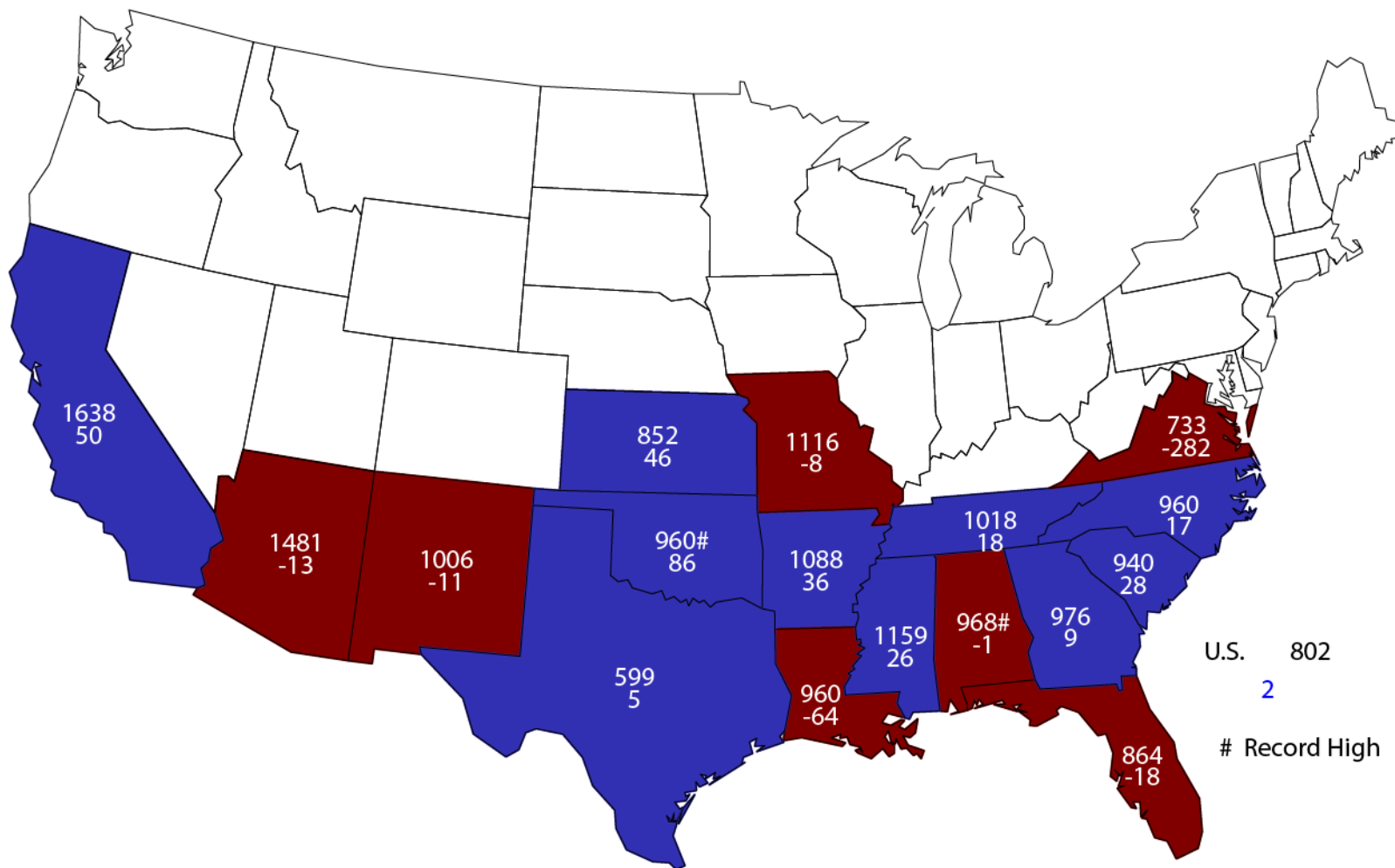
All Cotton Production United States

Million Bales



September 1, 2016 All Cotton Yield

Pounds and Change From Previous Month



U.S. 802
2
Record High



September 2016 Crop Production

Crop	Unit	September 2016	% Change From Previous Forecast	% Change From Previous Season
Rice				
Planted	Mil Ac	3.18	-1.0	+21.7
Harvested	Mil Ac	3.13	-1.8	+21.7
Yield	Lbs/Ac	7,569	-1.2	+1.3
Production	Mil Cwt	237	-2.9	+23.3



September 2016 Crop Production

Crop	Unit	September 2016	% Change From Previous Forecast	% Change From Previous Season
Peanuts				
Planted	Mil Ac	1.67	+7.0	+2.9
Harvested	Mil Ac	1.59	+3.7	+1.3
Yield	Lbs/Ac	4,044	+1.4	+2.0
Production	Bil Lbs	6.42	+5.0	+3.3



September 2016 Crop Production

Crop	Unit	September 2016	% Change From Previous Forecast	% Change From Previous Season
Sorghum	Mil Bu	488	+2.9	-18.1
All Tobacco	Mil Lbs	687	-1.4	-4.1
Sugarbeets	Mil Tons	35.8	-0.5	+1.3
Sugarcane	Mil Tons	34.0	+2.6	+5.5



September 2016 Crop Production

Crop	Unit	September 2016	% Change From Previous Forecast	% Change From Previous Season
Navel Oranges (CA)	Mil Tons	1.68	NA	-7.7
Hazelnuts (OR)	Thou Tons	38.0	NA	+22.6
Walnuts (CA)	Thou Tons	670	NA	+11.1



Upcoming Reports

Release Date	Report Title
September 15	Potatoes Certified Organic
September 23	Cattle on Feed
September 29	Ag Prices
September 30	Hogs and Pigs Grain Stocks Small Grains Summary
October 3	CAIR: Cotton System CAIR: Fats & Oils CAIR: Grain Crushings
October 12	Crop Production



United States Department of Agriculture
National Agricultural Statistics Service

All Reports Available At
www.nass.usda.gov

For Questions
202-720-2127
800-727-9540
nass@nass.usda.gov