



United States Department of Agriculture  
**National Agricultural Statistics Service**

---

---



Hogs & Pigs Inventory  
March 30, 2017

Executive Briefing



# Survey Overview



## March Hogs & Pigs

|                        |  |
|------------------------|--|
| Data Collection Period | February 28 – March 17   |
| Sample Size            | 7,541  |
| Collection Methods     | Mail, Telephone, Internet, Face-to-Face Interview  |
| Primary Data Items     | Total Inventory: by class, weight group, and quarter;<br>Sows Farrowing; Pig Crop; and Pigs per Litter |



# U.S. Hogs and Pigs Revisions



| Survey            | Item              | Initial Estimate<br>(1,000 head) | Previous Revision<br>(1,000 head) | Current Revision<br>(1,000 head) | Net Revision<br>(1,000 head) | Current Estimate<br>(1,000 head) |
|-------------------|-------------------|----------------------------------|-----------------------------------|----------------------------------|------------------------------|----------------------------------|
| September 1, 2016 | All Hogs and Pigs | 70,851                           | +435<br>+0.6%                     | +600<br>+0.8%                    | +1035<br>+1.5%               | 71,886                           |
|                   | Pig Crop          | 31,983                           | +4<br>+0.01%                      | +344<br>+1.1%                    | +348<br>+1.1%                | 32,331                           |
| December 1, 2016  | All Hogs and Pigs | 71,500                           |                                   |                                  |                              | 71,500                           |



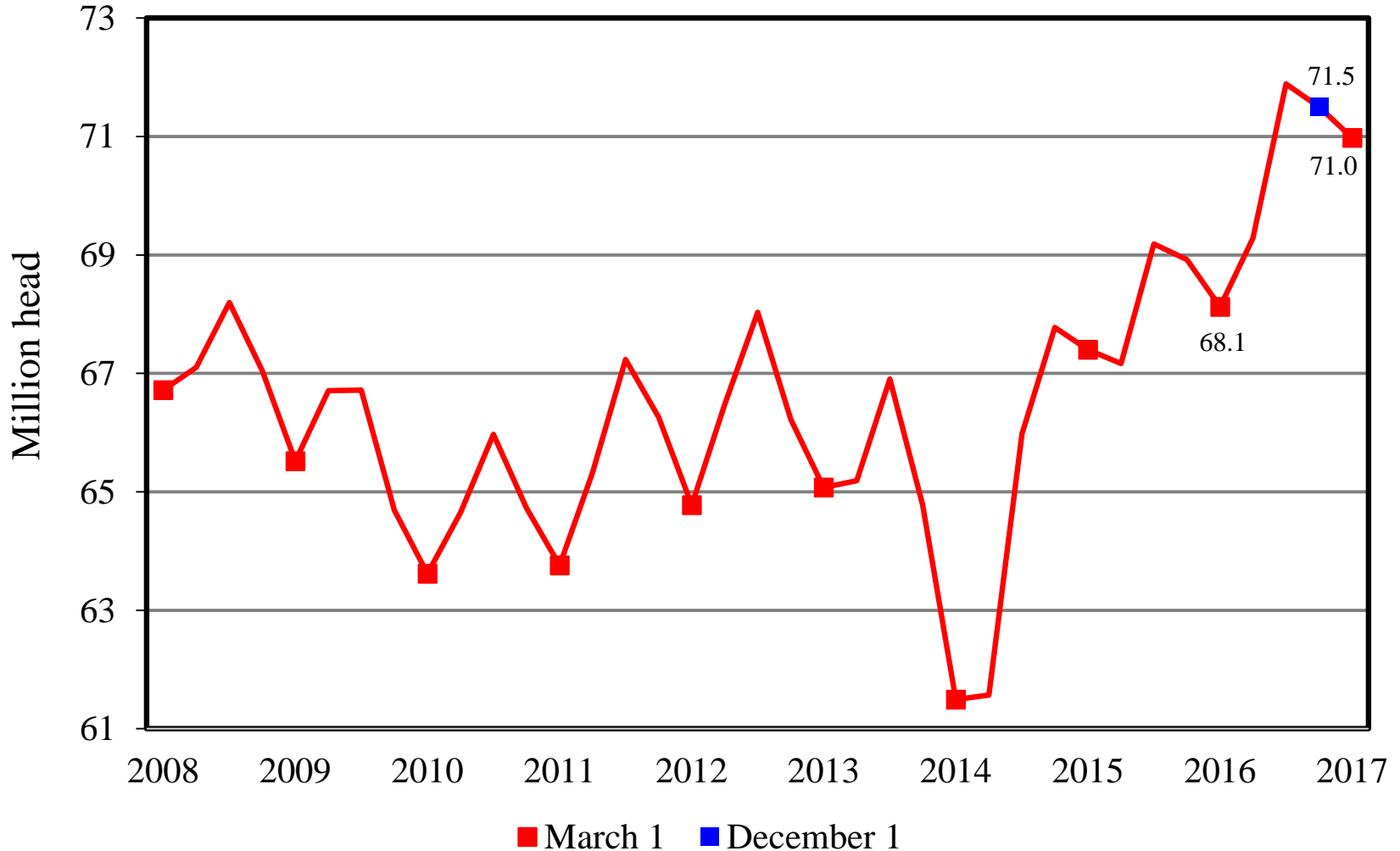
# U.S. Hogs & Pigs March 1



| Item               | 2016       | 2017   | % PY |
|--------------------|------------|--------|------|
|                    | 1,000 head |        |      |
| All Hogs & Pigs    | 68,124     | 70,976 | 104  |
| Breeding Hogs      | 5,980      | 6,068  | 101  |
| Market Hogs        | 62,144     | 64,908 | 104  |
| less than 50 lbs   | 19,897     | 20,617 | 104  |
| 50-119 lbs         | 17,198     | 17,902 | 104  |
| 120-179 lbs        | 13,819     | 14,570 | 105  |
| 180 lbs & over     | 11,229     | 11,819 | 105  |
| Sows Farrowed      | 2,927      | 3,010  | 103  |
| Pig Crop           | 30,139     | 31,400 | 104  |
|                    | number     |        |      |
| Pigs per Litter    | 10.30      | 10.43  | 101  |
|                    | 1,000 head |        |      |
| Mar-May Farrowings | 2,968      | 3,010  | 101  |
| Jun-Aug Farrowings | 3,057      | 3,045  | 100  |

# U.S. Quarterly Hogs & Pigs

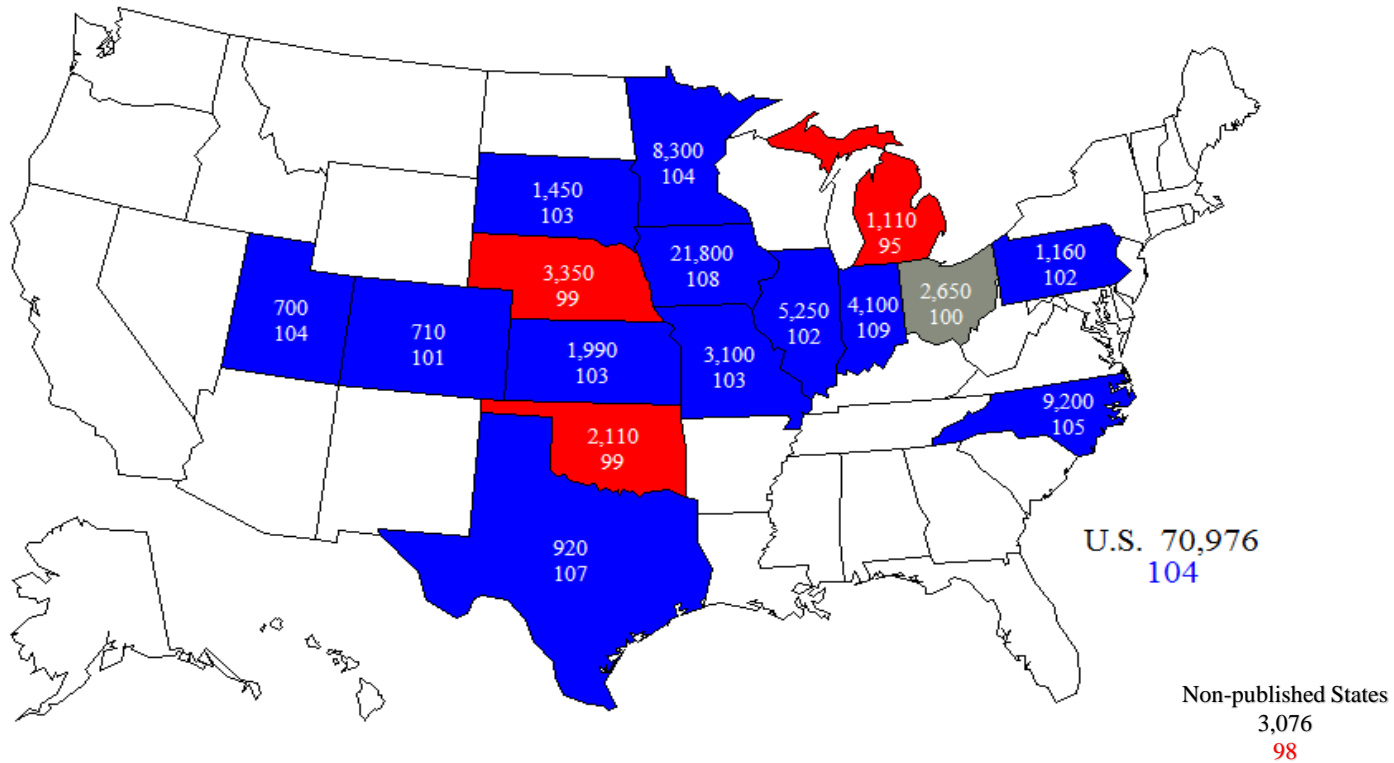
## 2008 - 2017



# March 1, 2017

## Hogs and Pigs Inventory

### (1,000) Head and Percent of Previous Year



Inventory      ■ Down      ■ Up      ■ No Change



# NASS Estimates Compared to Trade Expectations Percent of Previous Year

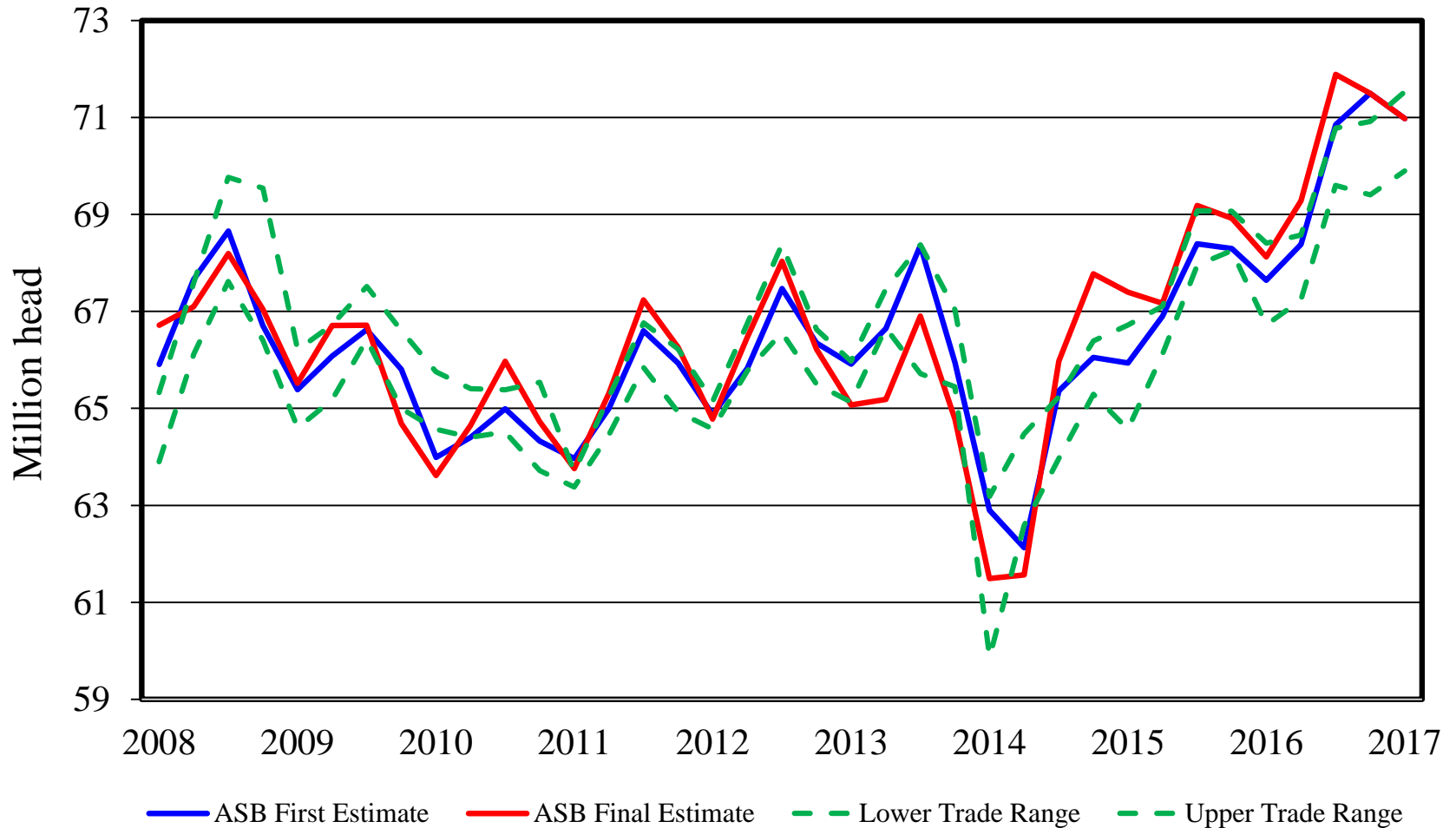


| Inventory Items      | NASS Estimate | Trade Average | Trade Range     |
|----------------------|---------------|---------------|-----------------|
| All Hogs & Pigs      | 104.2%        | 103.9%        | 102.6% – 105.0% |
| Breeding Hogs        | 101.5%        | 101.7%        | 101.0% – 102.3% |
| Market Hogs          | 104.4%        | 104.1%        | 102.7% – 105.1% |
| Dec – Feb Pig Crop   | 104.2%        | 103.4%        | 101.9% – 105.0% |
| Farrowing Intentions |               |               |                 |
| Mar – May 2017       | 101.4%        | 101.4%        | 100.7% – 103.0% |
| Jun – Aug 2017       | 99.6%         | 101.6%        | 100.7% – 103.0% |

# All Hogs and Pigs

## First Estimate Versus Final Estimate

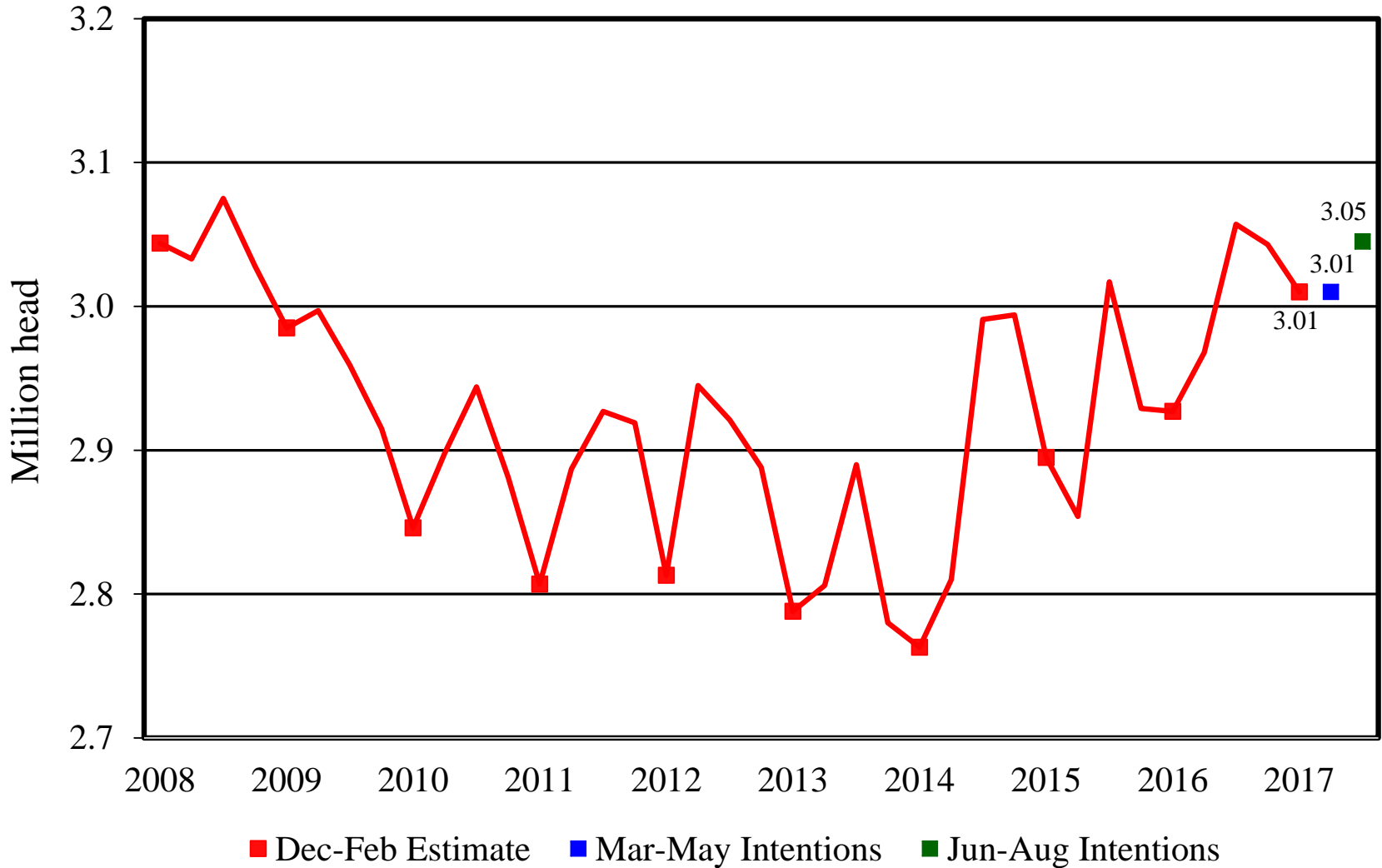
### 2008 - 2017





# U.S. Quarterly Sows Farrowed

## 2008-2017





# Breeding Herd Inventory

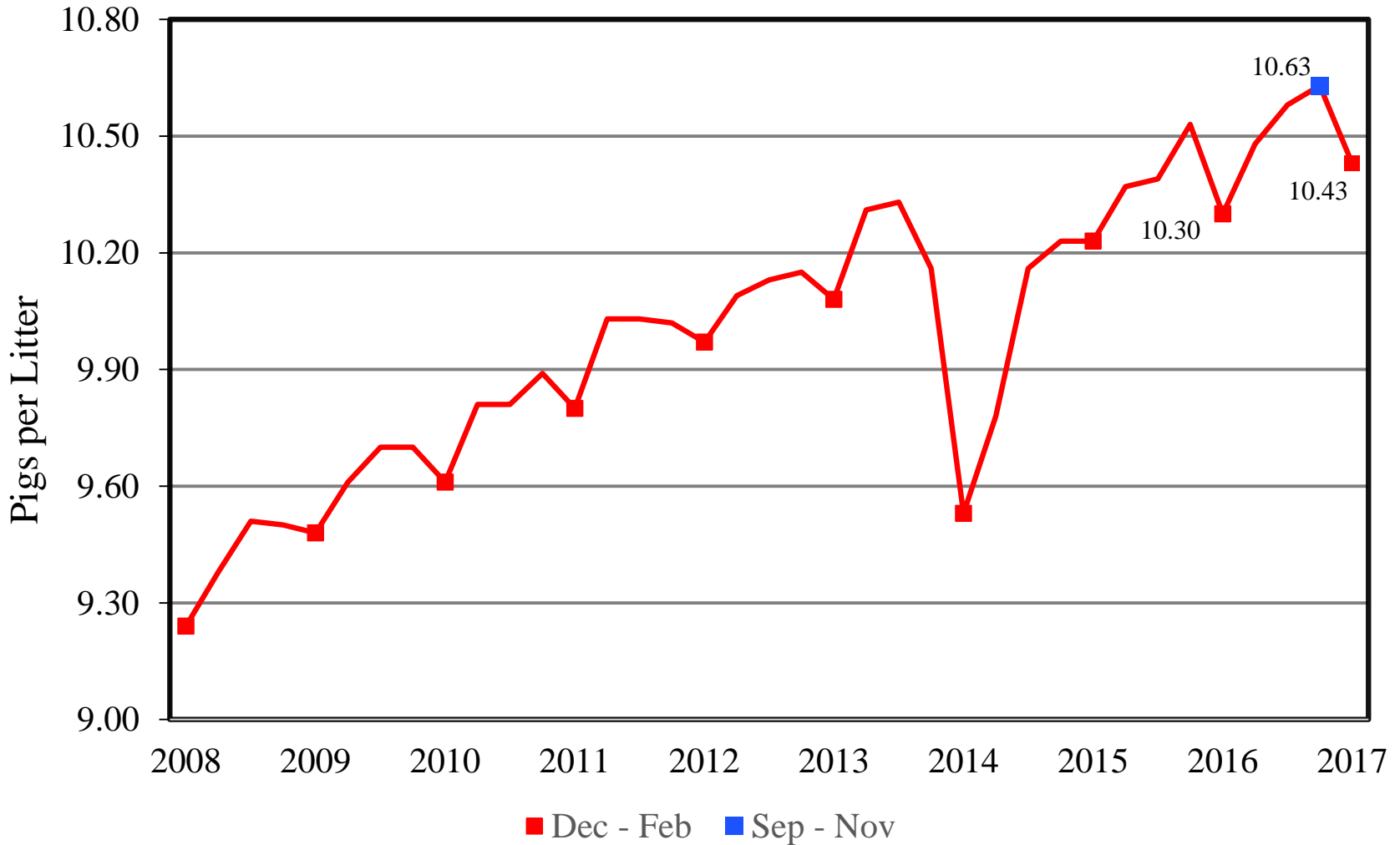
## Disposition & Utilization



| Year | Dec 1<br>Estimate<br>(1,000 head) | Slaughter<br>(1,000 head) | Additions<br>(1,000 head) | Mar 1<br>Estimate<br>(1,000 head) | Sow<br>Utilization<br>(Percent) |
|------|-----------------------------------|---------------------------|---------------------------|-----------------------------------|---------------------------------|
| 2008 | 6,233                             | 953                       | 920                       | 6,200                             | 49                              |
| 2009 | 6,062                             | 877                       | 807                       | 5,992                             | 49                              |
| 2010 | 5,850                             | 846                       | 756                       | 5,760                             | 49                              |
| 2011 | 5,778                             | 792                       | 802                       | 5,788                             | 49                              |
| 2012 | 5,803                             | 823                       | 840                       | 5,820                             | 48                              |
| 2013 | 5,819                             | 805                       | 819                       | 5,834                             | 48                              |
| 2014 | 5,757                             | 779                       | 873                       | 5,851                             | 48                              |
| 2015 | 5,939                             | 792                       | 835                       | 5,982                             | 49                              |
| 2016 | 6,002                             | 782                       | 760                       | 5,980                             | 49                              |
| 2017 | 6,090                             | 802                       | 780                       | 6,068                             | 49                              |

# U.S. Quarterly Pigs per Litter

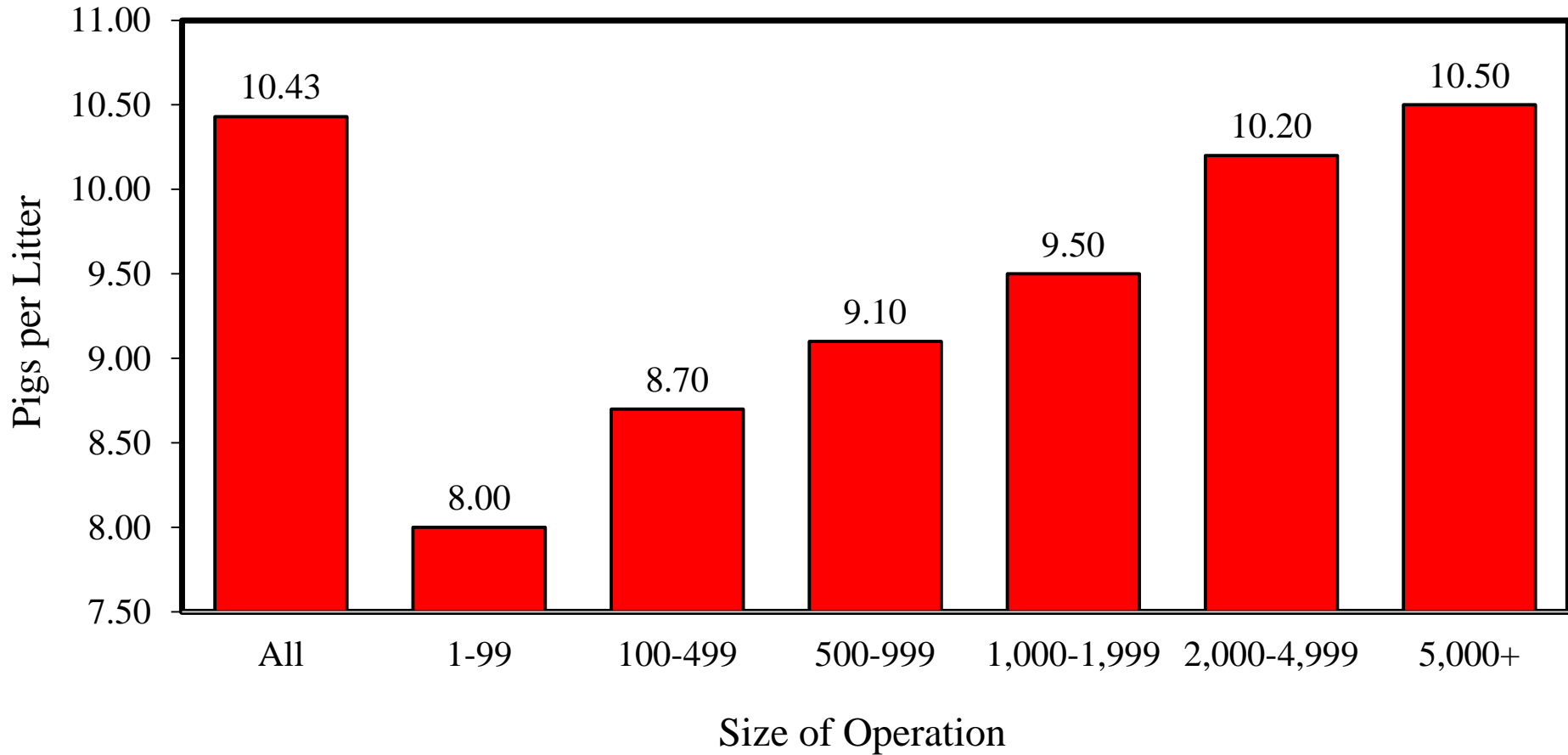
## 2008-2017



# USDA U.S. Pigs per Litter by Size of Operation

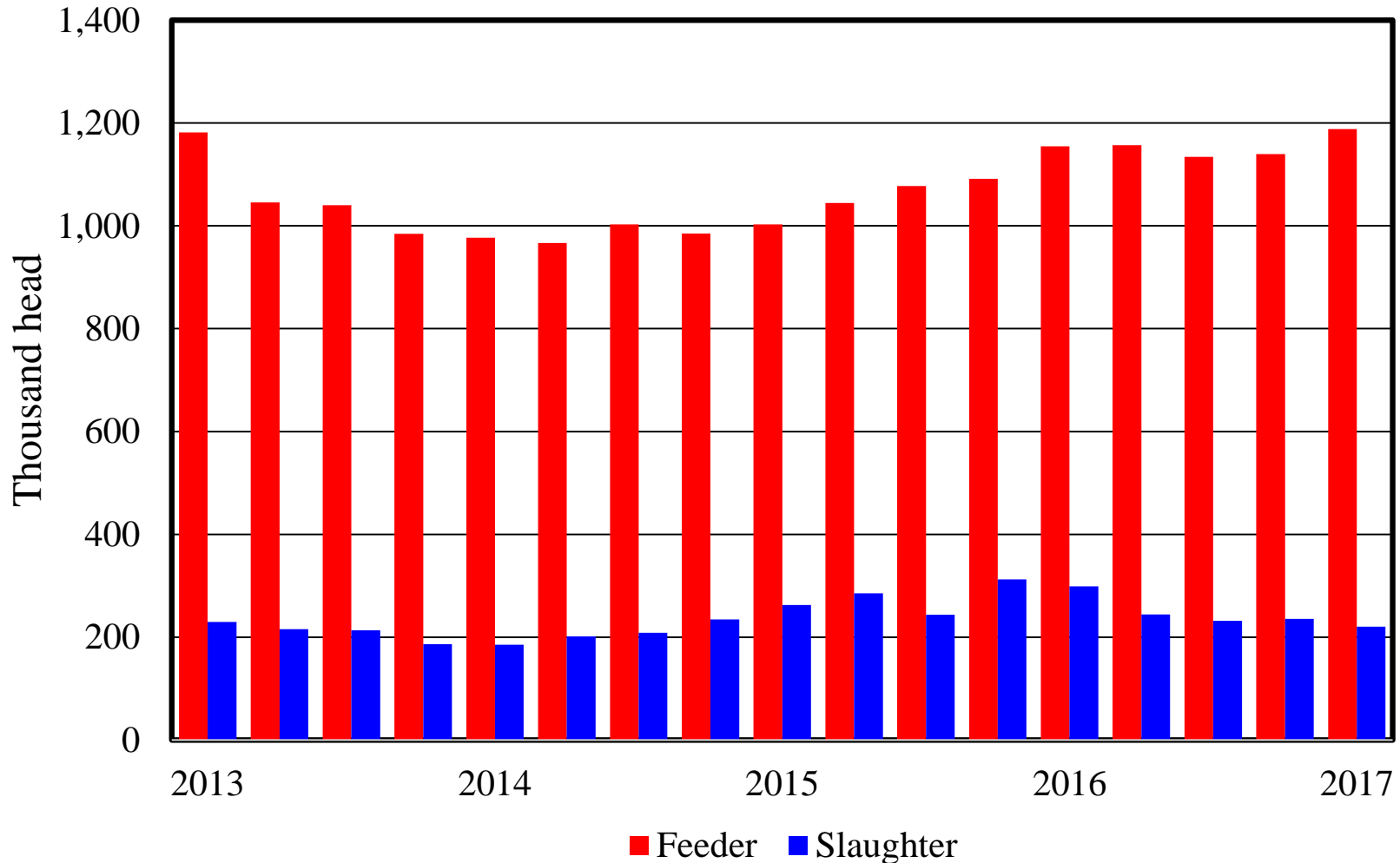


December 2016 - February 2017

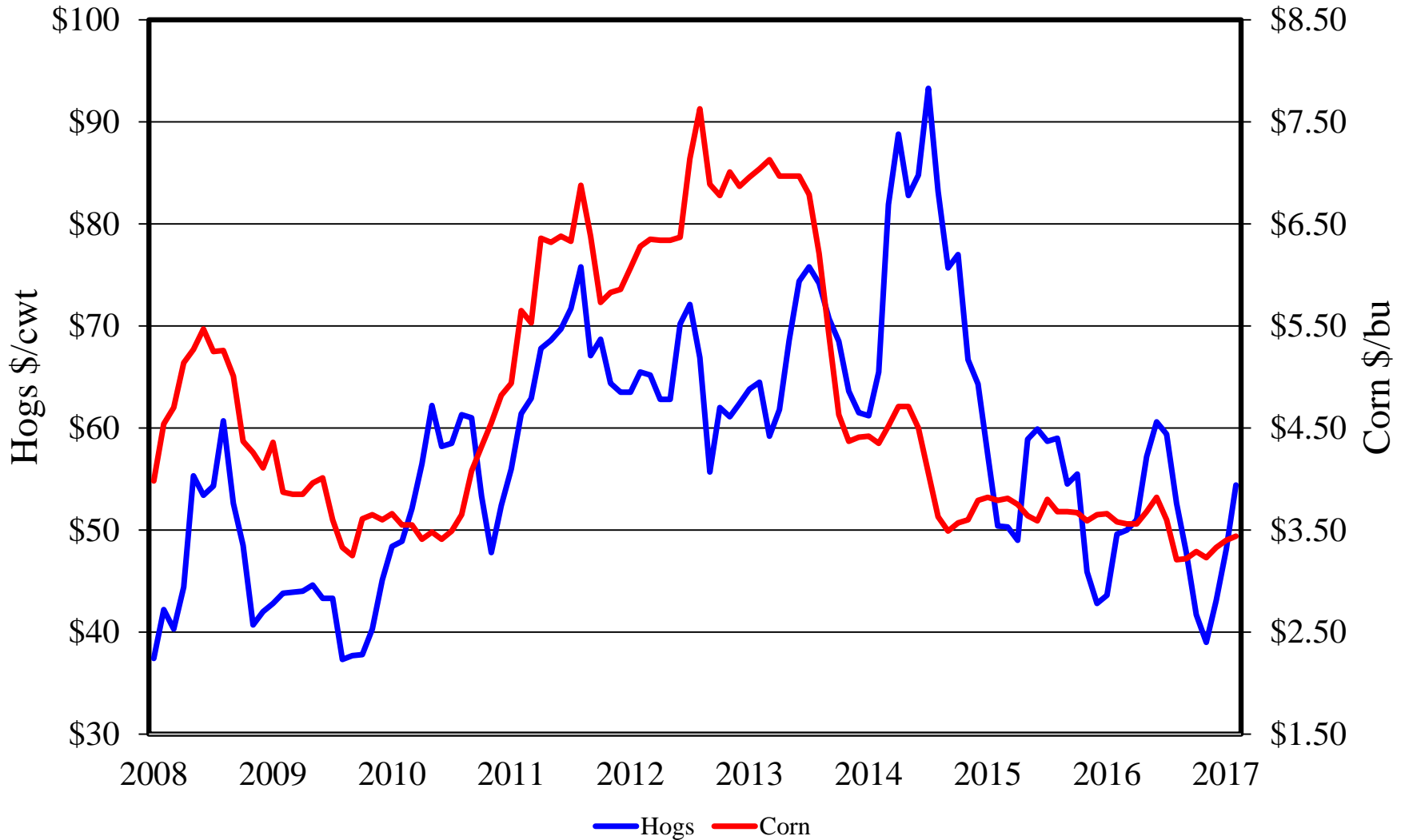


# Canadian Imports by Quarter

## Feeder Pigs and Slaughter Hogs



# U.S. Prices Received by Farmers for Hogs & Corn





# Upcoming NASS Reports



| Release Date | Report Title  |
|--------------|---|
| March 31     | Grain Stocks, Rice Stocks,<br>Prospective Plantings                               |
| April 3      | Cotton System, Fats & Oils, Grain Crushings                                       |
| April 11     | Crop Production   |
| April 20     | Milk Production   |
| April 21     | Cattle on Feed  |
| April 27     | Production, Disposition, & Income:<br>Meat Animals, Milk<br>Annual Dairy Products |
| April 28     | Poultry – Production and Value  |



United States Department of Agriculture  
**National Agricultural Statistics Service**

---

---



All Reports Available At  
[www.nass.usda.gov](http://www.nass.usda.gov)

For Questions  
(202) 720-3570  
(800) 727-9540  
[nass@nass.usda.gov](mailto:nass@nass.usda.gov)