



United States Department of Agriculture  
**National Agricultural Statistics Service**

---

---



Quarterly Hogs and Pigs  
December 22, 2017

Executive Briefing



# Survey Overview



## December Hogs and Pigs

Data Collection Period	November 30 – December 12
Sample Size	9,226
Collection Methods	Mail, Telephone, Internet, Face-to-Face Interview
Primary Data Items	Total Inventory: by class, weight group, and quarter; Sows Farrowing; Pig Crop; and Pigs per Litter



# U.S. Hogs and Pigs Revisions



Survey	Item	Initial Estimate (1,000 head)	Previous Revision (1,000 head)	Current Revision (1,000 head)	Net Revision (1,000 head)	Current Estimate (1,000 head)
December 1, 2016	All Hogs and Pigs	71,500	+25 +0.03%	+20 +0.03%	+45 +0.06%	71,545
March 1, 2017	All Hogs and Pigs	70,976	-305 -0.4%	+30 +0.04%	-275 -0.4%	70,701
June 1, 2017	All Hogs and Pigs	71,650	-220 -0.3%	-420 -0.6%	-640 -0.9%	71,010
	Pig Crop	32,264	No revision	-474 -1.5%	-474 -1.5%	31,790
September 1, 2017	All Hogs and Pigs	73,549	No revision	-250 -0.3%	-250 -0.3%	73,299



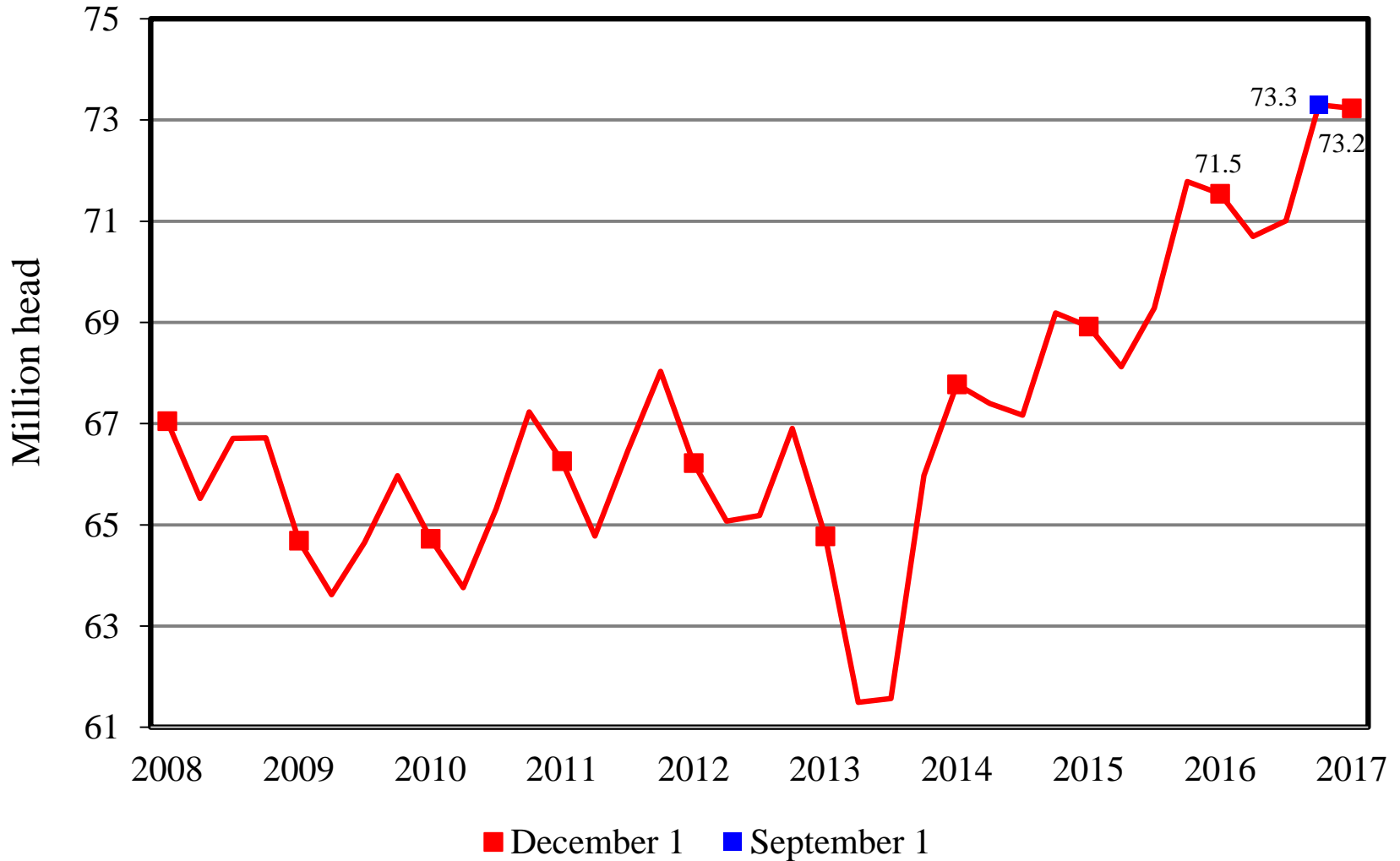
# U.S. Hogs and Pigs December 1



Item	2016	2017	% PY
	1,000 head		
All Hogs and Pigs	71,545	73,230	102
Breeding Hogs	6,110	6,179	101
Market Hogs	65,435	67,051	102
less than 50 lbs	20,887	21,447	103
50-119 lbs	18,102	18,549	102
120-179 lbs	13,786	14,105	102
180 lbs & over	12,660	12,949	102
Sows Farrowed	3,046	3,109	102
Pig Crop	32,372	33,399	103
	number		
Pigs per Litter	10.63	10.74	101
	1,000 head		
Dec-Feb Farrowings	2,986	3,070	103
Mar-May Farrowings	3,014	3,083	102

# U.S. Quarterly Hogs and Pigs

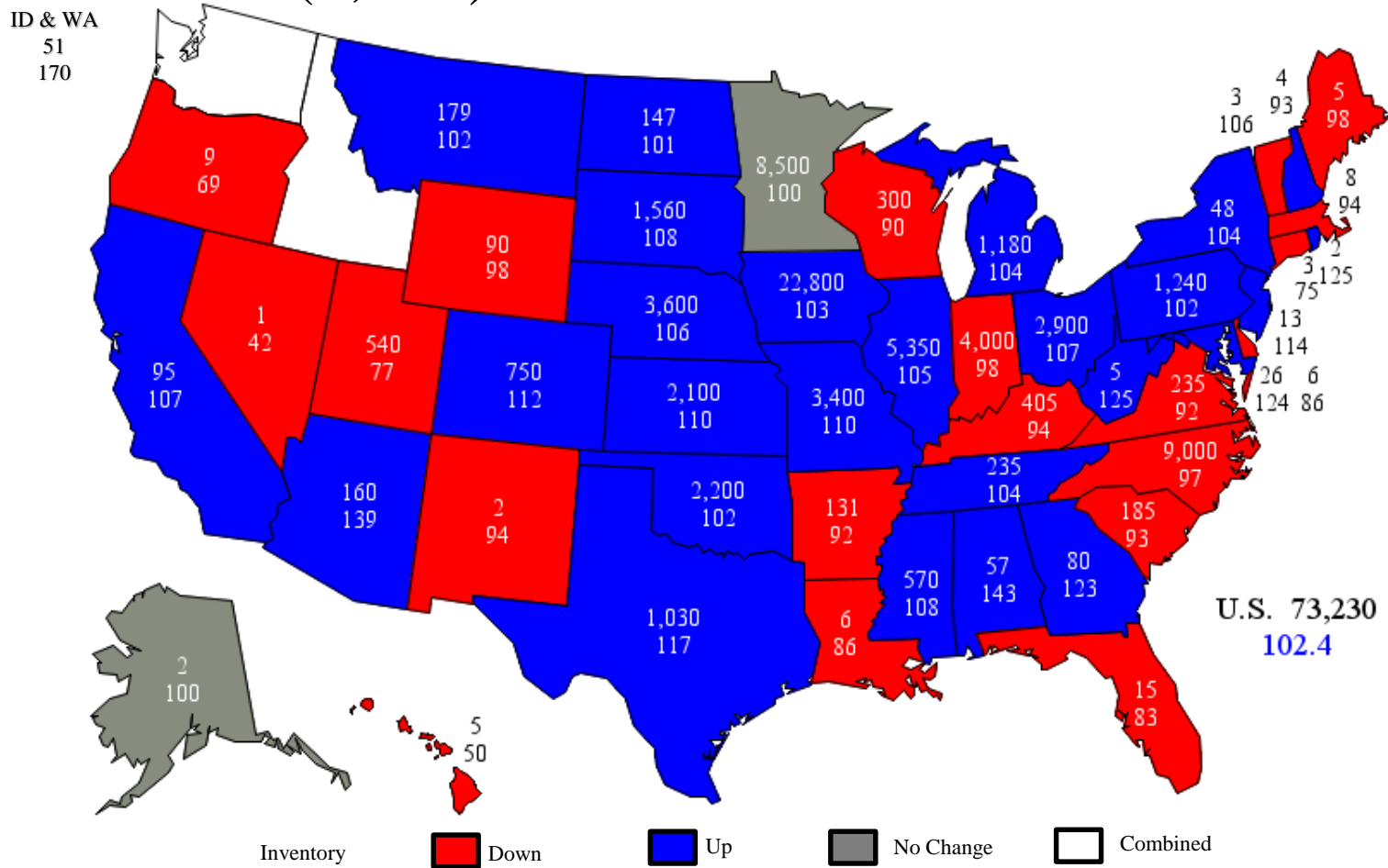
## 2008 - 2017



# December 1, 2017

## Hogs and Pigs Inventory

### Head (1,000) and Percent of Previous Year





# Trade Expectations Compared to NASS Estimates Percent of Previous Year

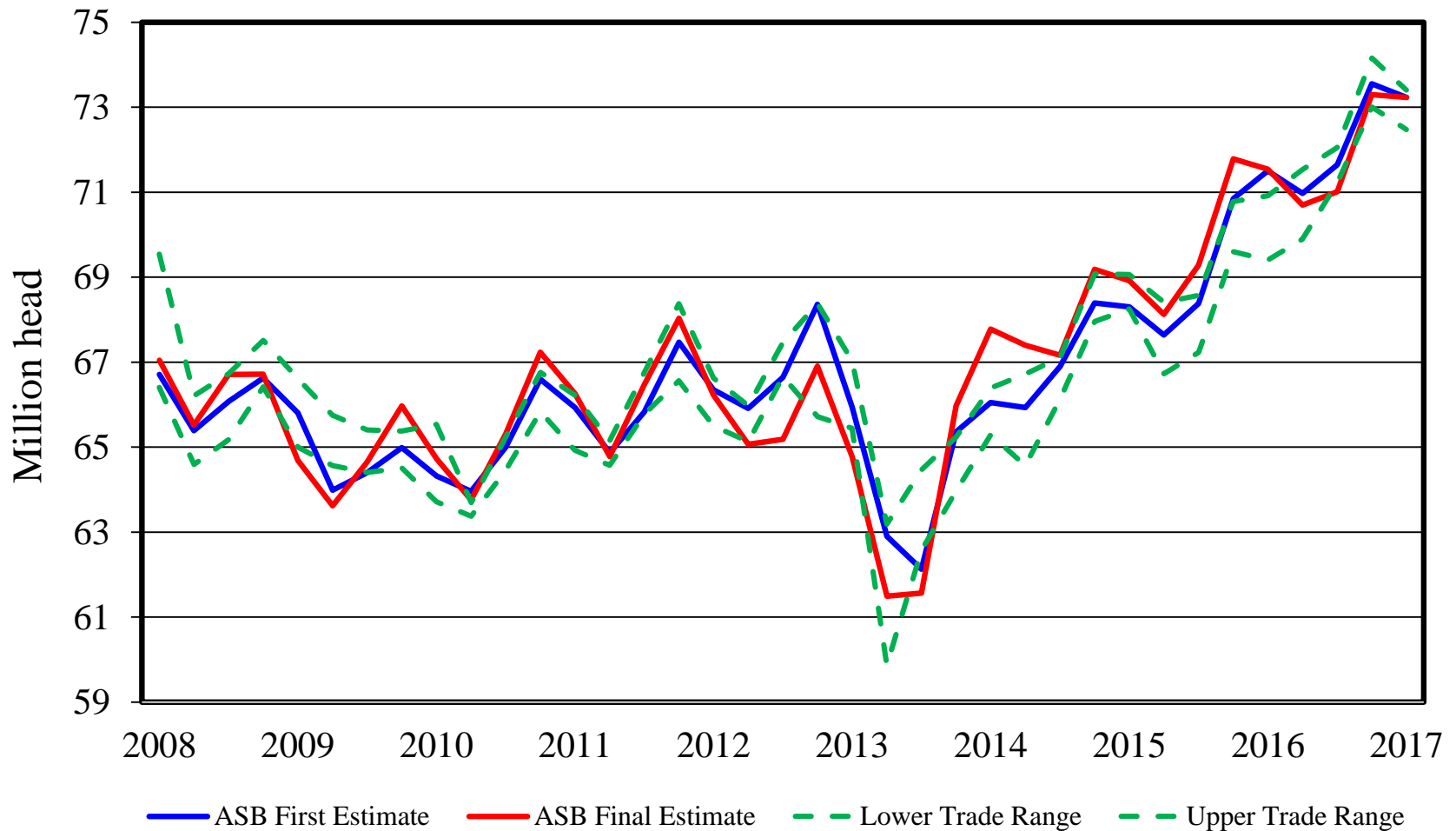


Inventory Items	NASS Estimate	Trade Average	Trade Range
All Hogs and Pigs	102.4%	102.0%	101.3% – 102.6%
Breeding Hogs	101.1%	100.8%	100.0% – 101.6%
Market Hogs	102.5%	102.1%	101.3% – 102.8%
Sep – Nov Pig Crop	103.2%	102.0%	101.5% – 103.0%
Farrowing Intentions			
Dec – Feb	102.8%	101.1%	99.5% – 101.8%
Mar – May	102.3%	101.2%	100.0% – 102.1%

# All Hogs and Pigs

## First Estimate Versus Final Estimate

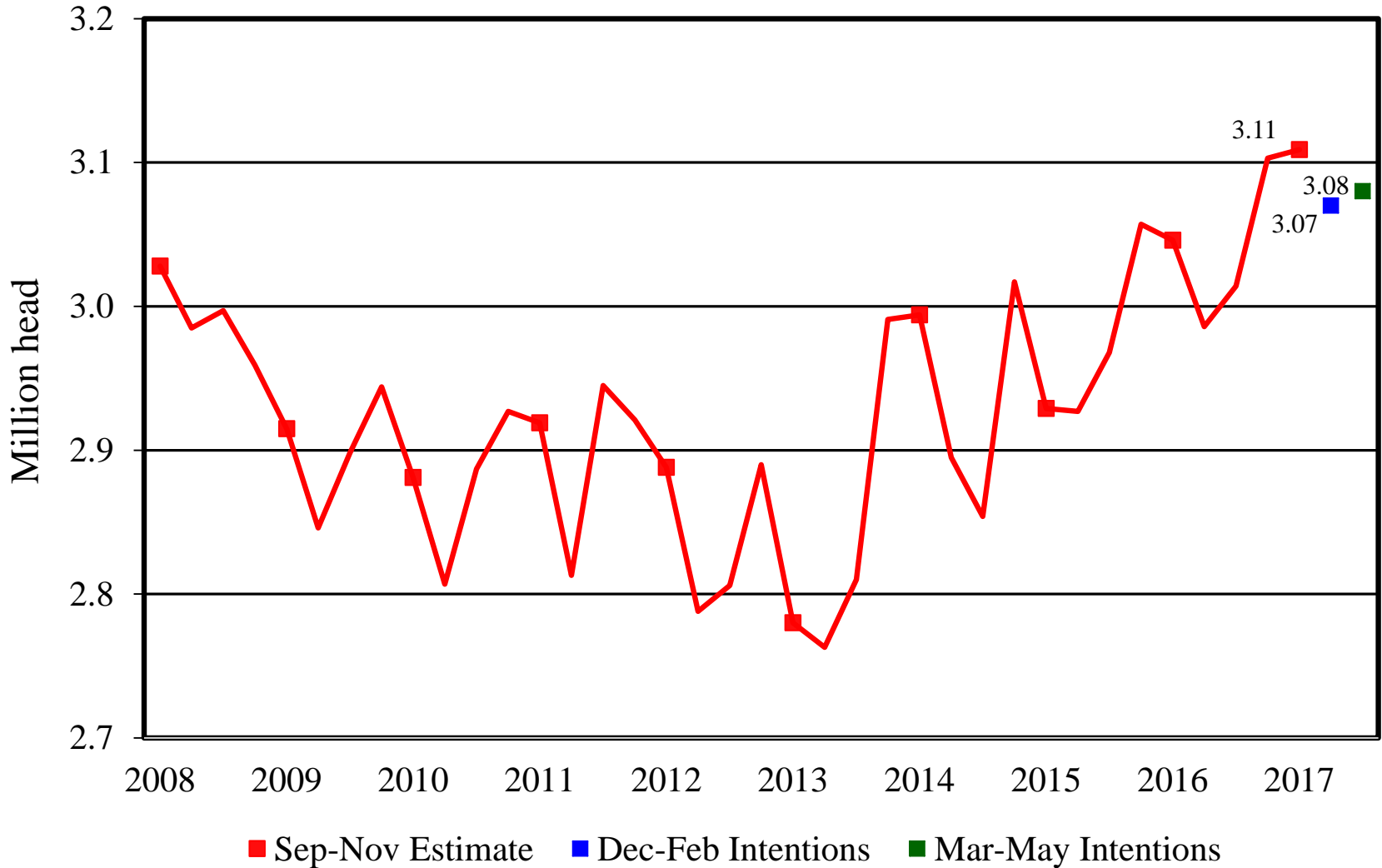
### 2008 - 2017





# U.S. Quarterly Sows Farrowed

## 2008-2017





# Breeding Herd Inventory

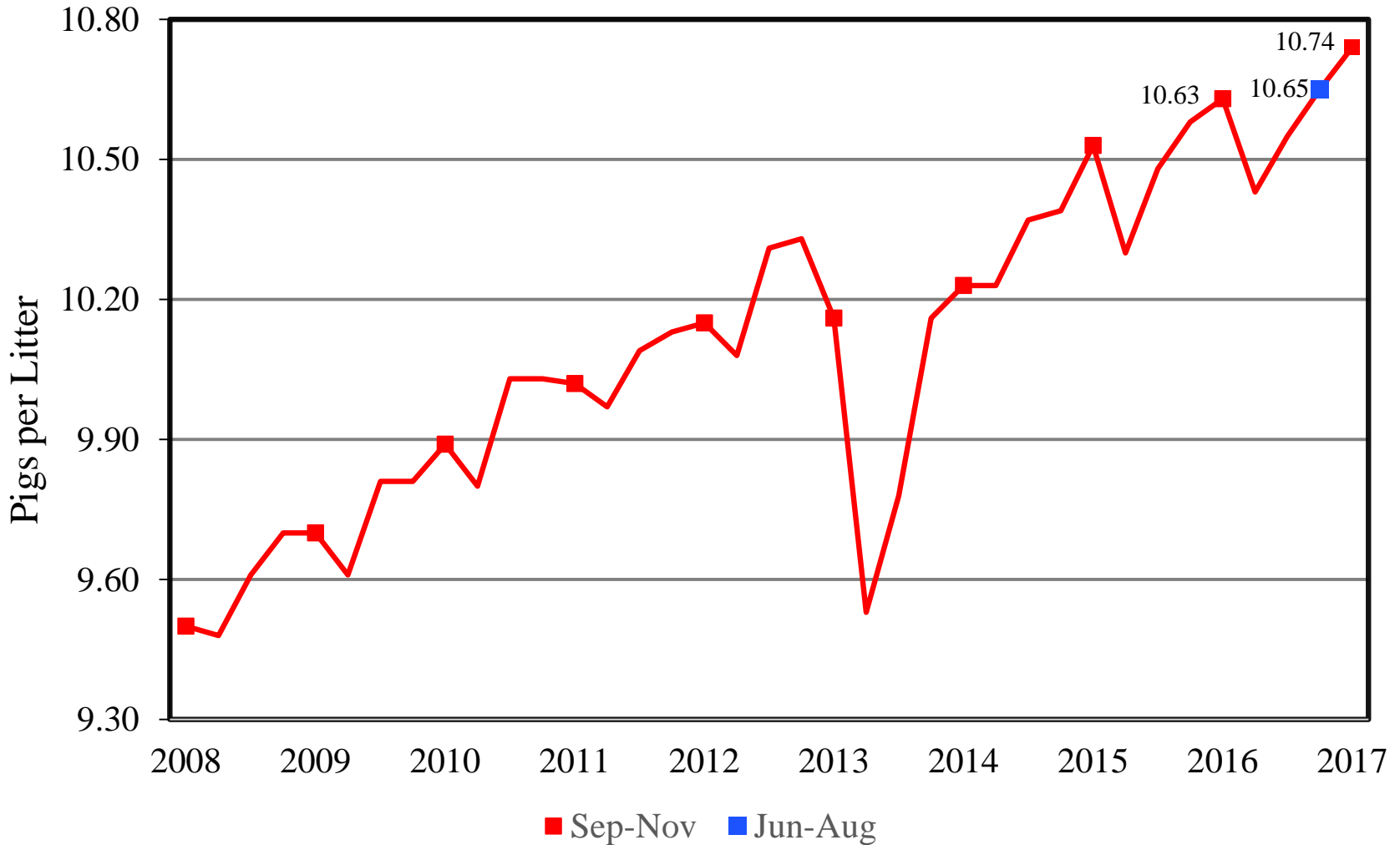
## Disposition and Utilization



Year	Sep 1 Estimate (1,000 head)	Slaughter (1,000 head)	Additions (1,000 head)	Dec1 Estimate (1,000 head)	Sow Utilization (Percent)
2008	6,061	964	965	6,062	50
2009	5,875	941	917	5,850	50
2010	5,770	849	858	5,778	50
2011	5,806	880	877	5,803	50
2012	5,788	887	918	5,819	50
2013	5,816	826	767	5,757	48
2014	5,920	802	822	5,939	51
2015	5,986	772	789	6,002	49
2016	6,016	825	919	6,110	51
2017	6,117	839	901	6,179	51

# U.S. Quarterly Pigs per Litter

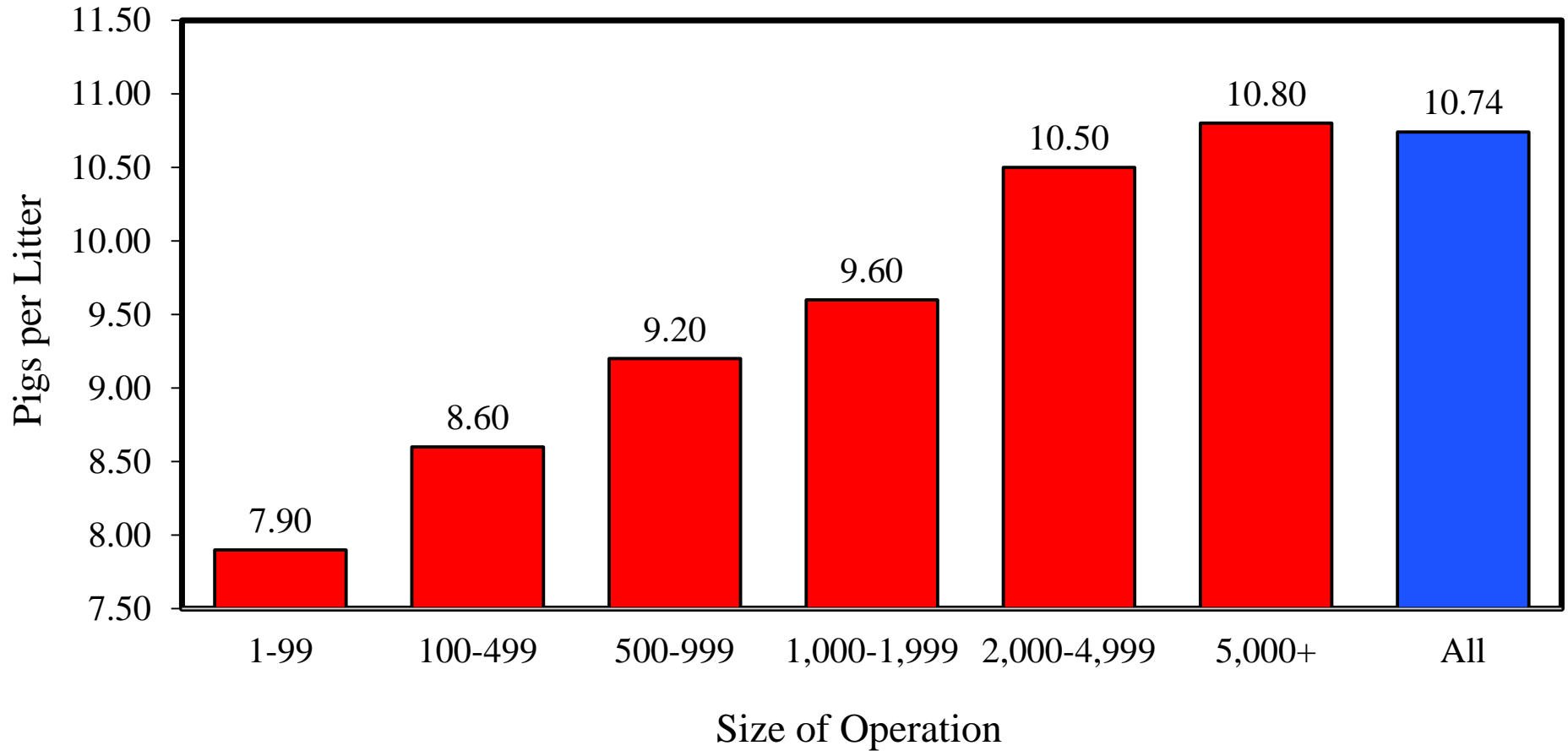
## 2008-2017



# USDA U.S. Pigs per Litter by Size of Operation

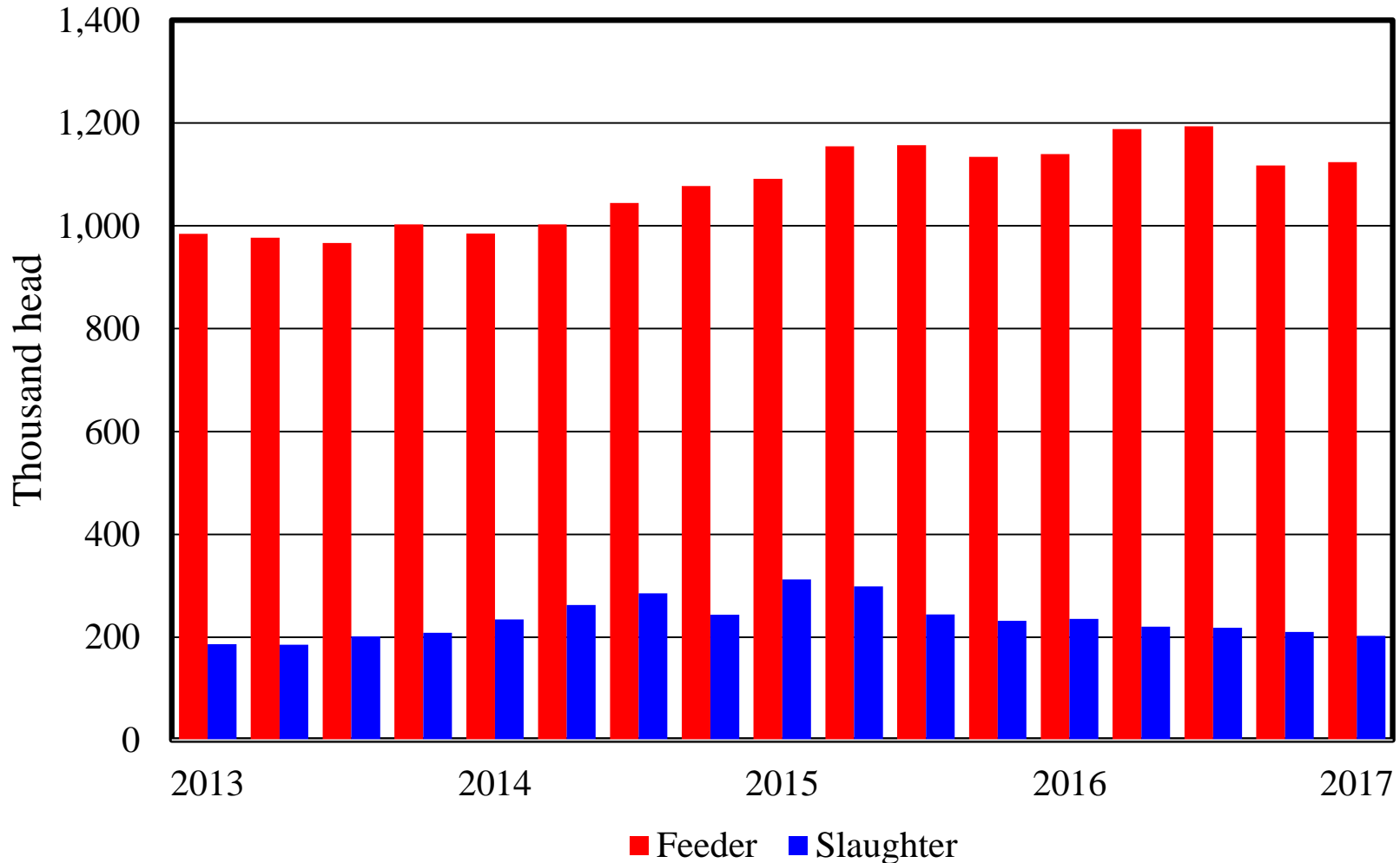


September - November 2017

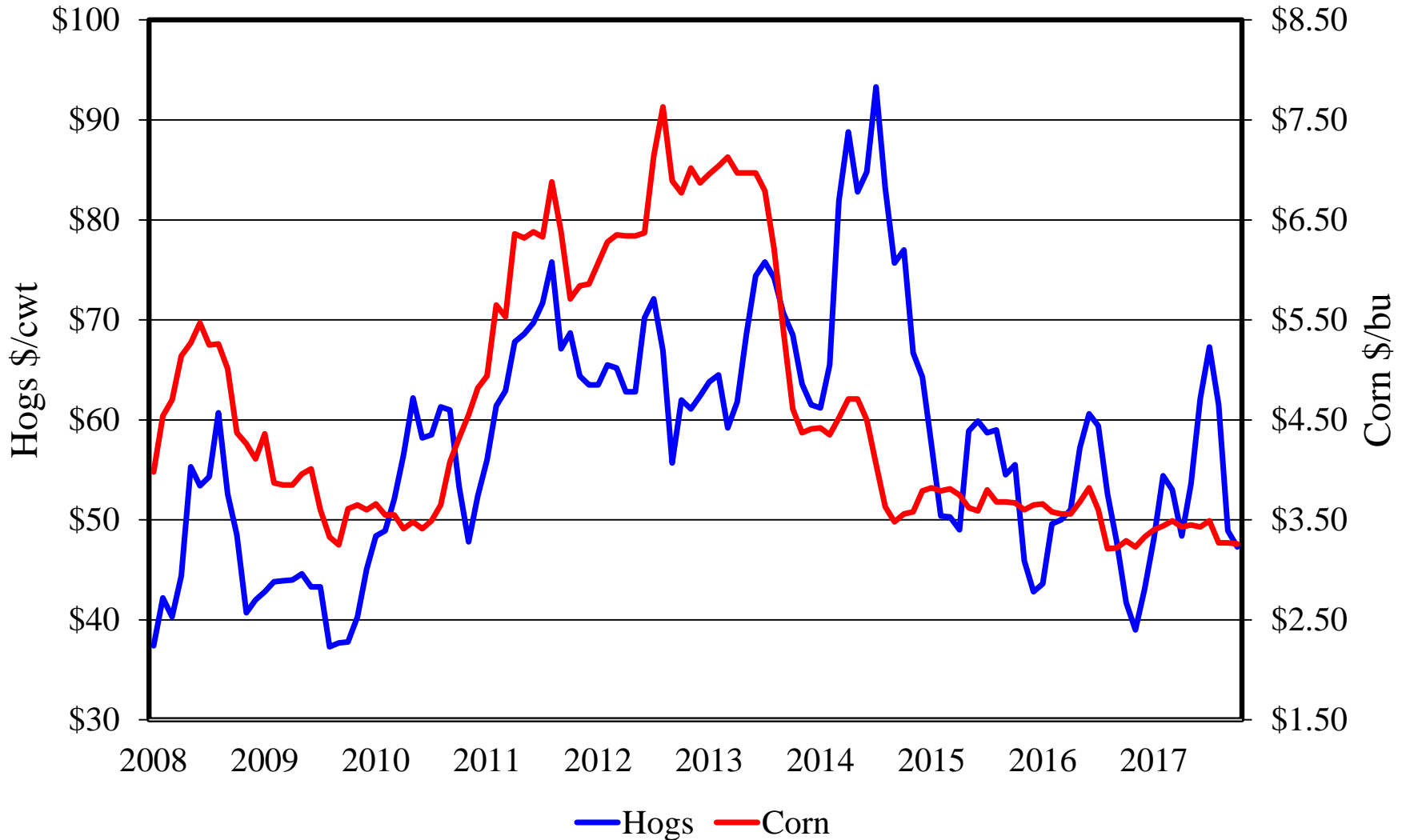


# Canadian Imports by Quarter

## Feeder Pigs and Slaughter Hogs



# U.S. Prices Received by Farmers for Hogs and Corn





# Upcoming NASS Reports



Release Date	Report Title
December 28, 2017	Agricultural Prices
January 2, 2018	Cotton System, Fats & Oils, Grain Crushings
January 12, 2018	Crop Production Crop Production Annual Grain Stocks
January 23, 2018	Milk Production
January 26, 2018	Cattle on Feed
January 31, 2018	Cattle Sheep and Goats



United States Department of Agriculture  
**National Agricultural Statistics Service**

---

---



United States Department of Agriculture

USDA's  
94th  
Annual

**Agricultural Outlook Forum**  
**THE ROOTS OF PROSPERITY**

February 22-23, 2018 • Crystal Gateway Marriott Hotel, Arlington, Virginia





United States Department of Agriculture  
**National Agricultural Statistics Service**

---

---



All Reports Available At  
[www.nass.usda.gov](http://www.nass.usda.gov)

For Questions  
(202) 720-3570  
(800) 727-9540  
[nass@nass.usda.gov](mailto:nass@nass.usda.gov)