



United States Department of Agriculture
National Agricultural Statistics Service

Crop Production - Annual
Grain Stocks
Rice Stocks
Cotton Ginnings
Winter Wheat and Canola Seedings
January Crop Production
Executive Summary

Lance Honig, Chief
Crops Branch



Contents

Field Crops	Stocks	Fruit & Nuts	Specialty Crops
Corn	Corn	Citrus	Potatoes
Soybeans	Soybeans		Sweet Potatoes
All Cotton	Sorghum		Peppermint Oil
Sorghum	Rice		Spearmint Oil
Rice	Hay		Hops
Hay & Forage	All Wheat		Taro (Hawaii)
Peanuts	Barley		
Proso Millet	Oats		
Minor Oilseeds			
Sugarcane			
Sugarbeets			
Tobacco			
Pulse Crops			
Winter Wheat			

Survey Overview

	December Ag Survey	Off-Farm Grain Stocks
Survey Type	Farmer Reported	Off-Farm Grain Stock Facilities
Collection Method	Mail, Phone, Internet, Personal Interview	Mail, Phone, Internet, Personal Interview
Crops Included	Field Crops	Corn, Soybeans, All Wheat, Durum Wheat, Barley, Oats, Sorghum, Pulse Crops
States	All except HI	All except AK, HI, and NV
Sample Size	81,782	~8,500
Collection Period	Nov 29 – Dec 19	Nov 29 – Dec 20



Principal Crops Planted Acreage

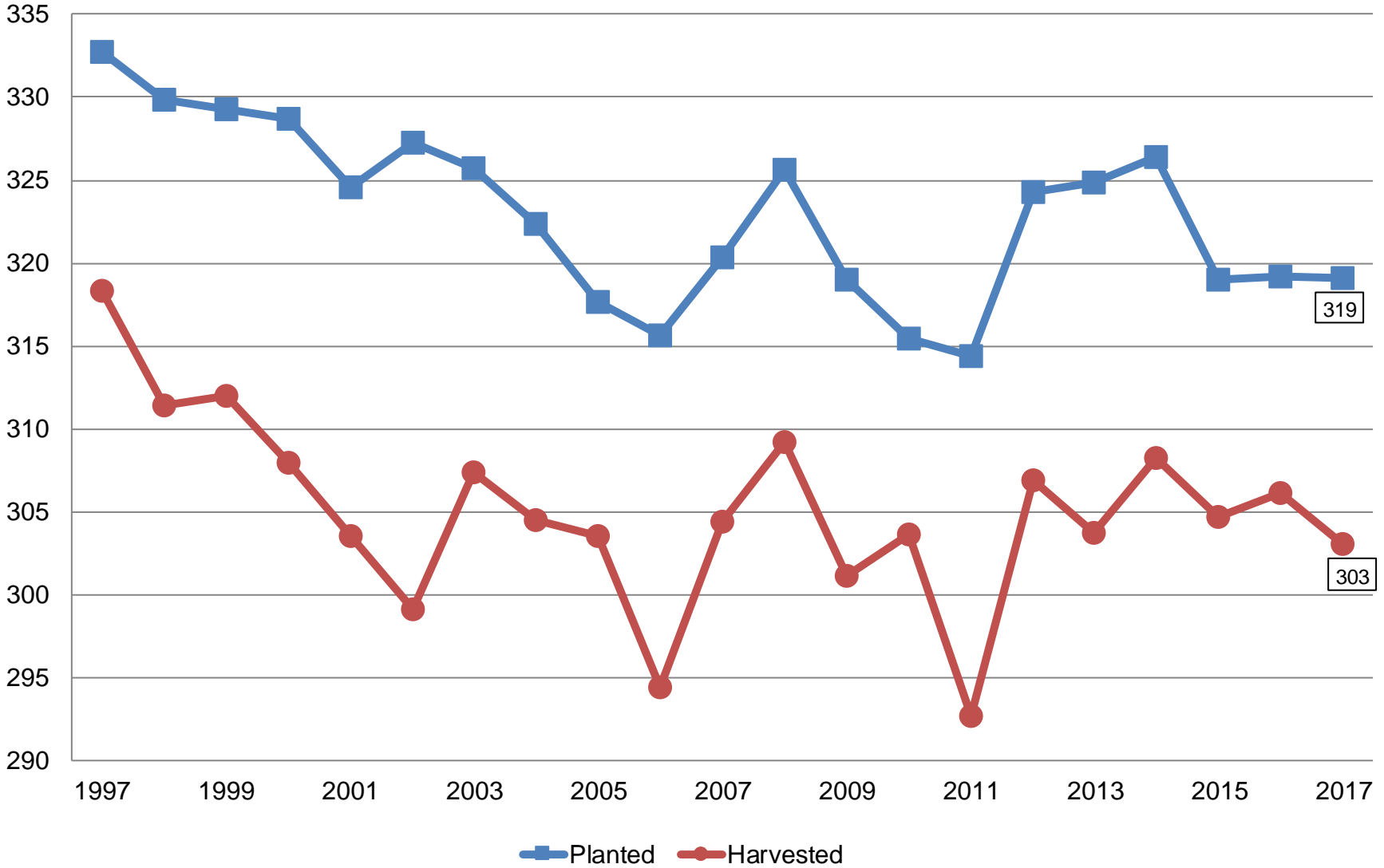
United States

Year	Principal Crops	Change From Previous Year
	<i>Million Acres</i>	
2008	325.6	+5.3
2009	319.0	-6.6
2010	315.4	-3.6
2011	314.3	-1.1
2012	324.3	+10.0
2013	324.9	+0.6
2014	326.4	+1.5
2015	319.0	-7.5
2016	319.2	+0.3
2017	319.1	-0.1



Principal Crops United States

Million Acres





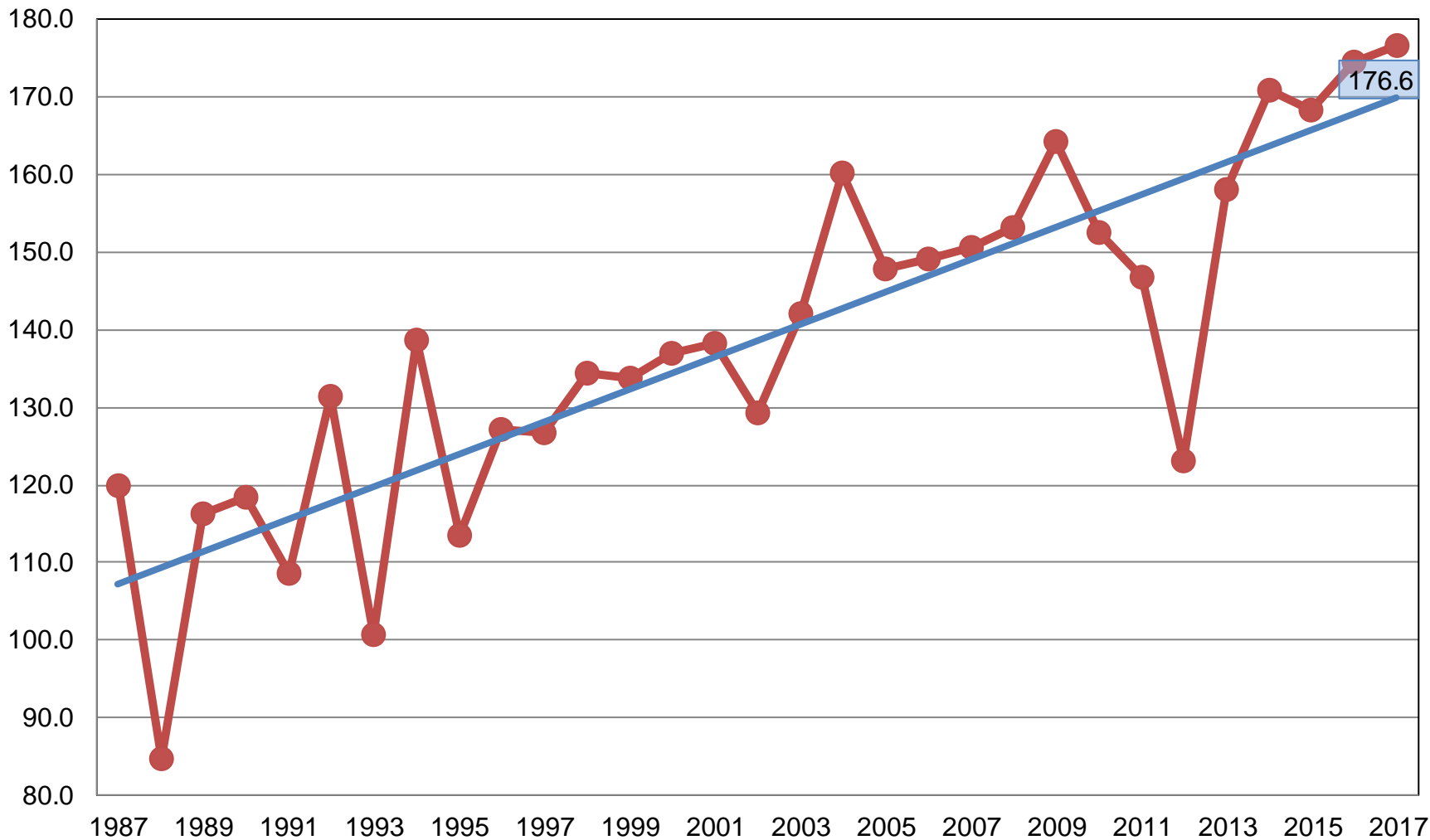
2017 Crop Production – Annual

Crop	Unit	January 2018	% Change From Previous Forecast	% Change From Previous Season
Corn				
Planted	Mil Ac	90.2	-0.3	-4.1
Harvested	Mil Ac	82.7	-0.5	-4.7
Yield	Bu/Ac	176.6	+0.7	+1.1
Production	Bil Bu	14.6	+0.2	-3.6
Stocks	Bil Bu	12.5	NA	+1.1

Corn for Grain Yield

United States

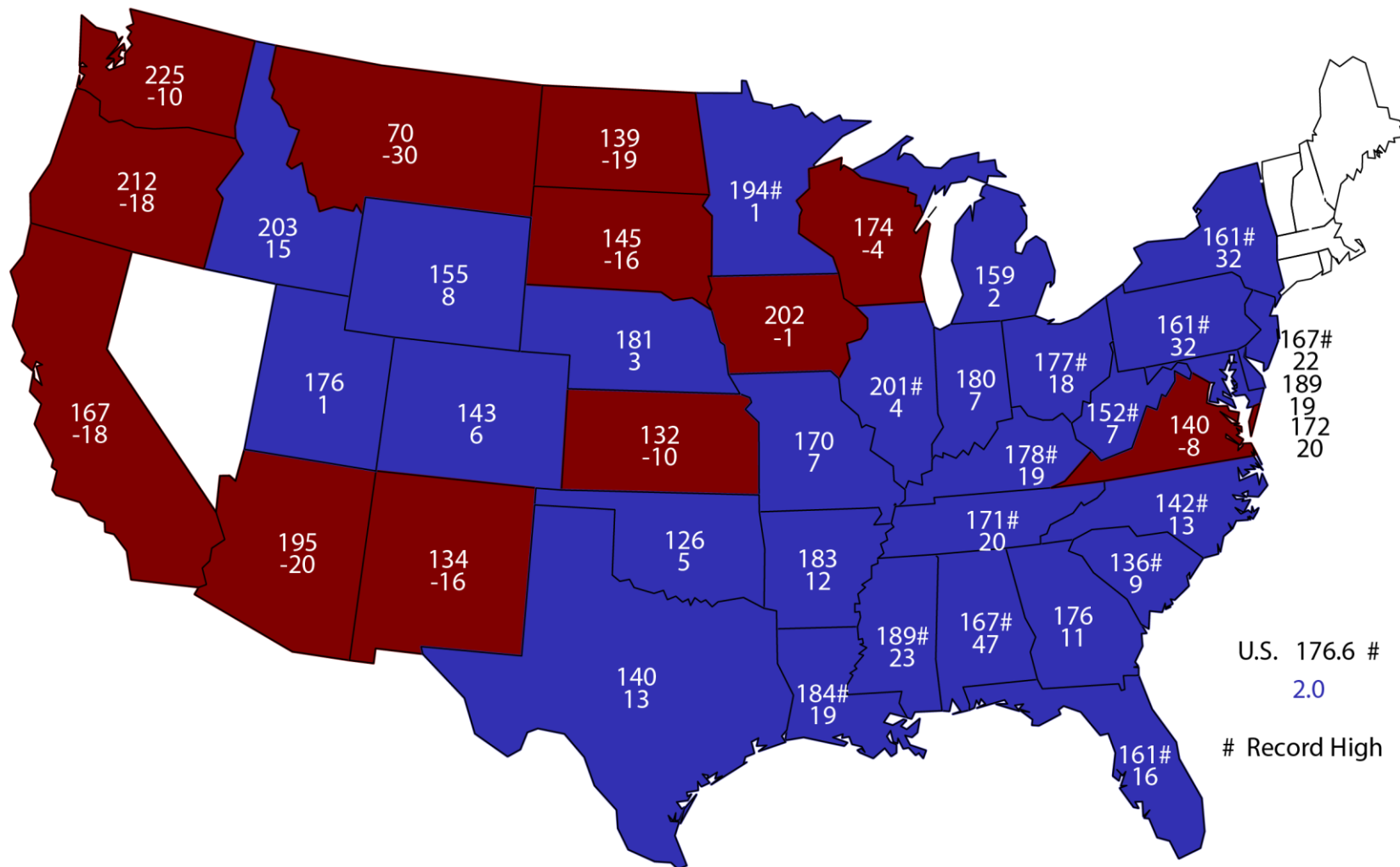
Bushels per Acre



Yield Linear (Yield)

2017 Corn Yield

Bushels and Change From Previous Year

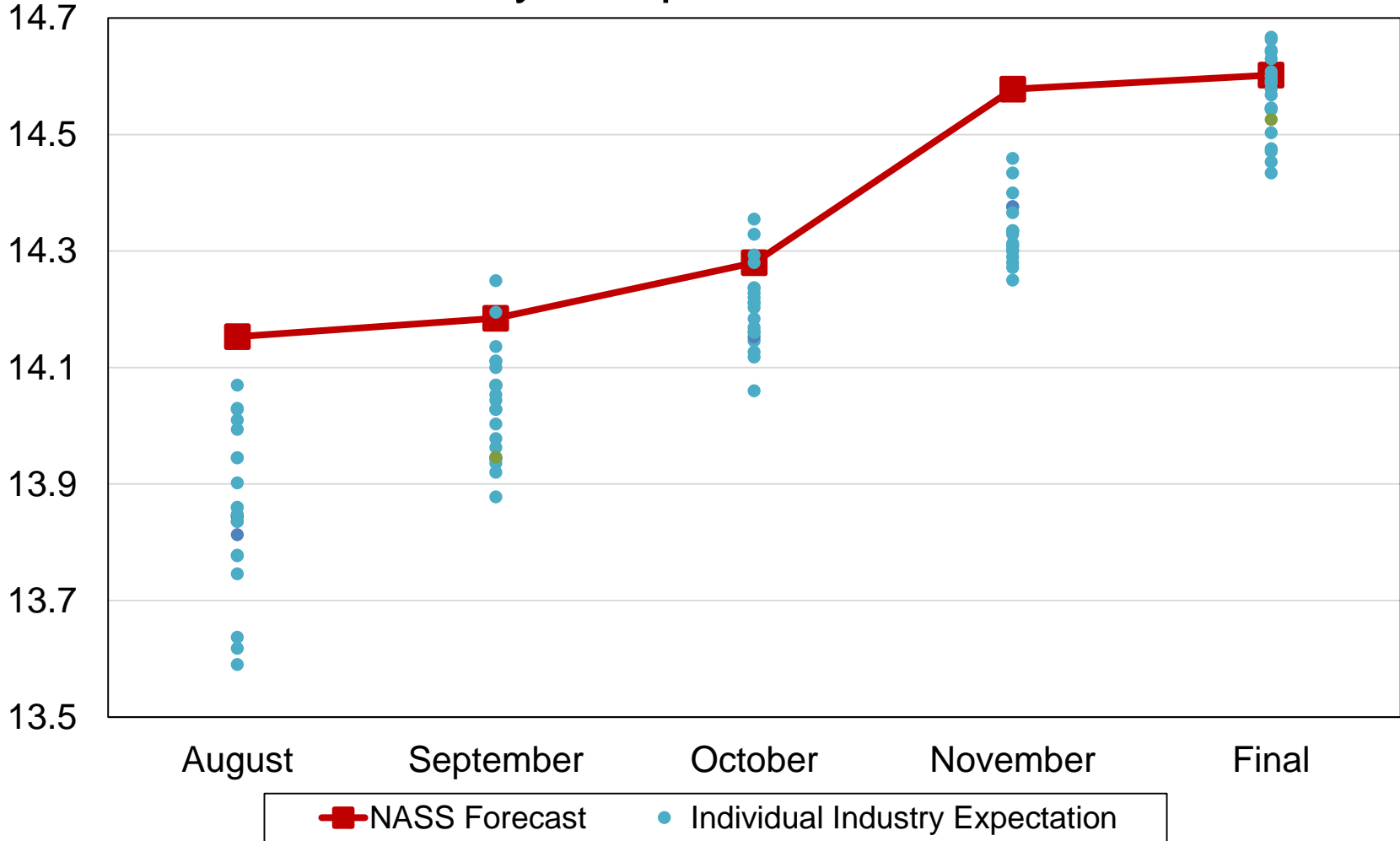


U.S. 176.6 #
2.0

Record High

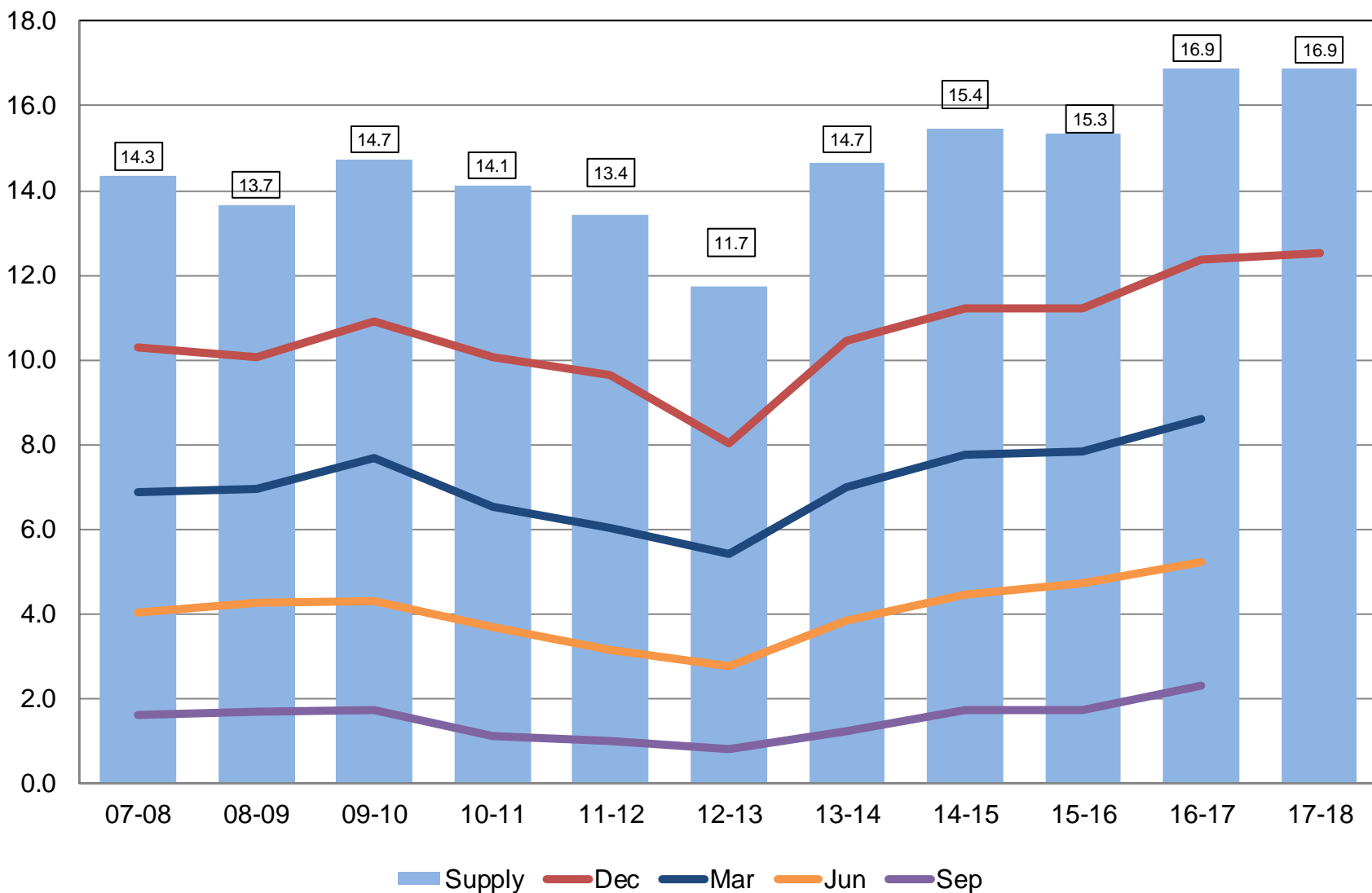
2017 United States Corn Production Trade Analyst Expectations vs NASS

Billion Bushels



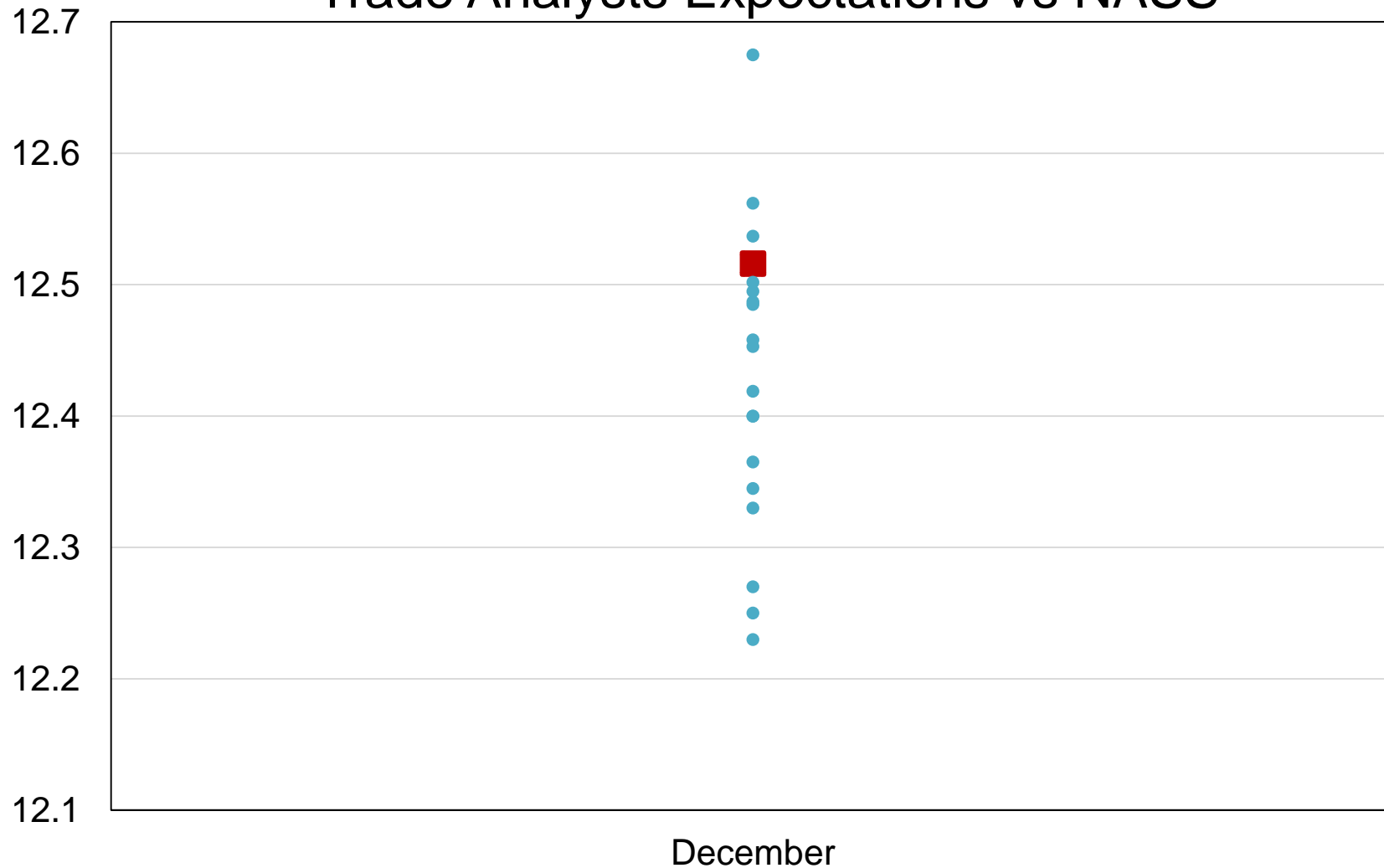
Corn Stocks United States

Billion Bushels



2017 United States Corn Stocks Trade Analysts Expectations vs NASS

Billion Bushels



NASS Estimate Individual Industry Expectation

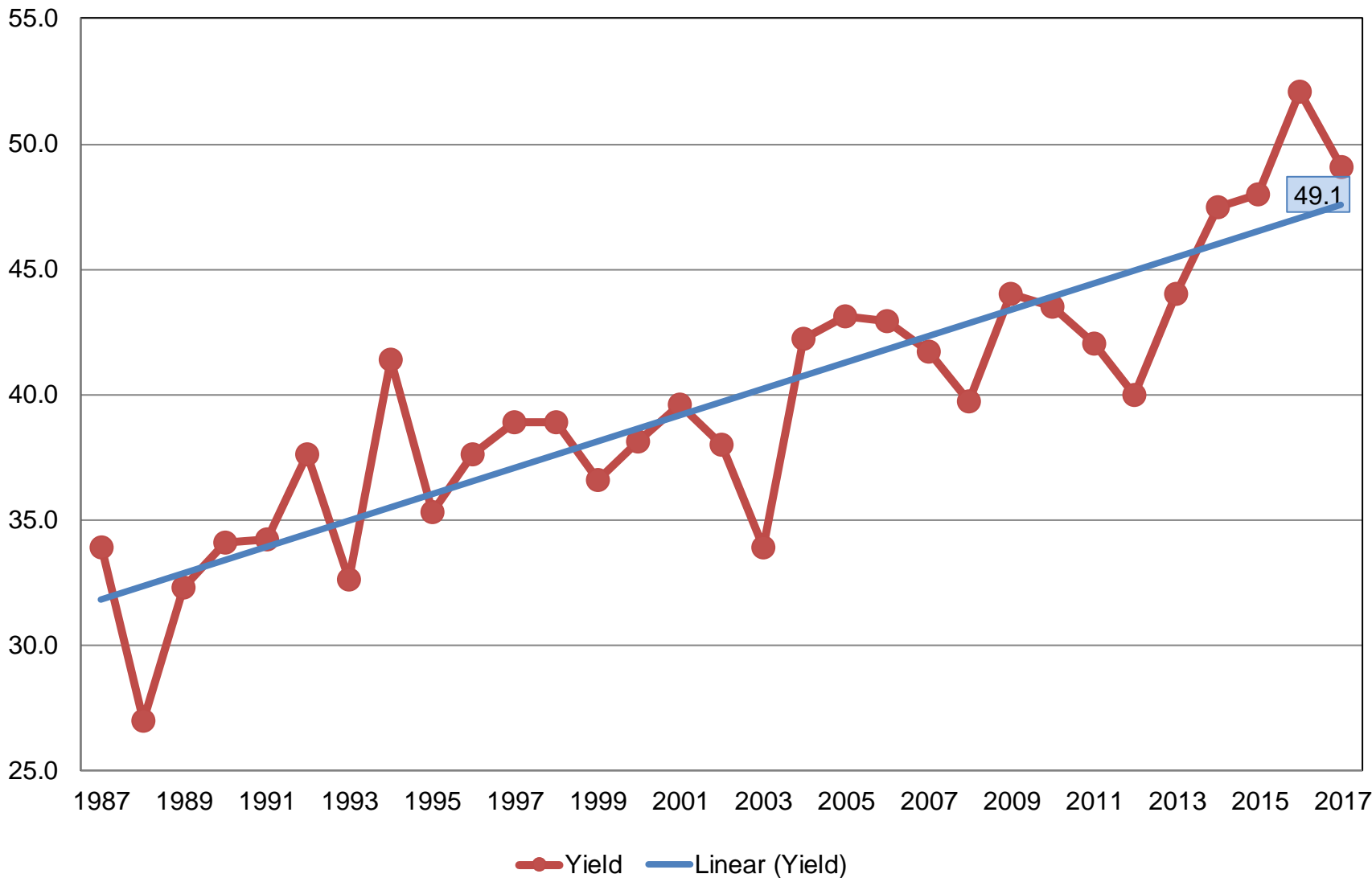


2017 Crop Production – Annual

Crop	Unit	January 2018	% Change From Previous Forecast	% Change From Previous Season
Soybeans				
Planted	Mil Ac	90.1	-0.1	+8.0
Harvested	Mil Ac	89.5	+0.1	+8.3
Yield	Bu/Ac	49.1	-0.8	-5.6
Production	Bil Bu	4.39	-0.8	+2.2
Stocks	Bil Bu	3.16	NA	+8.9

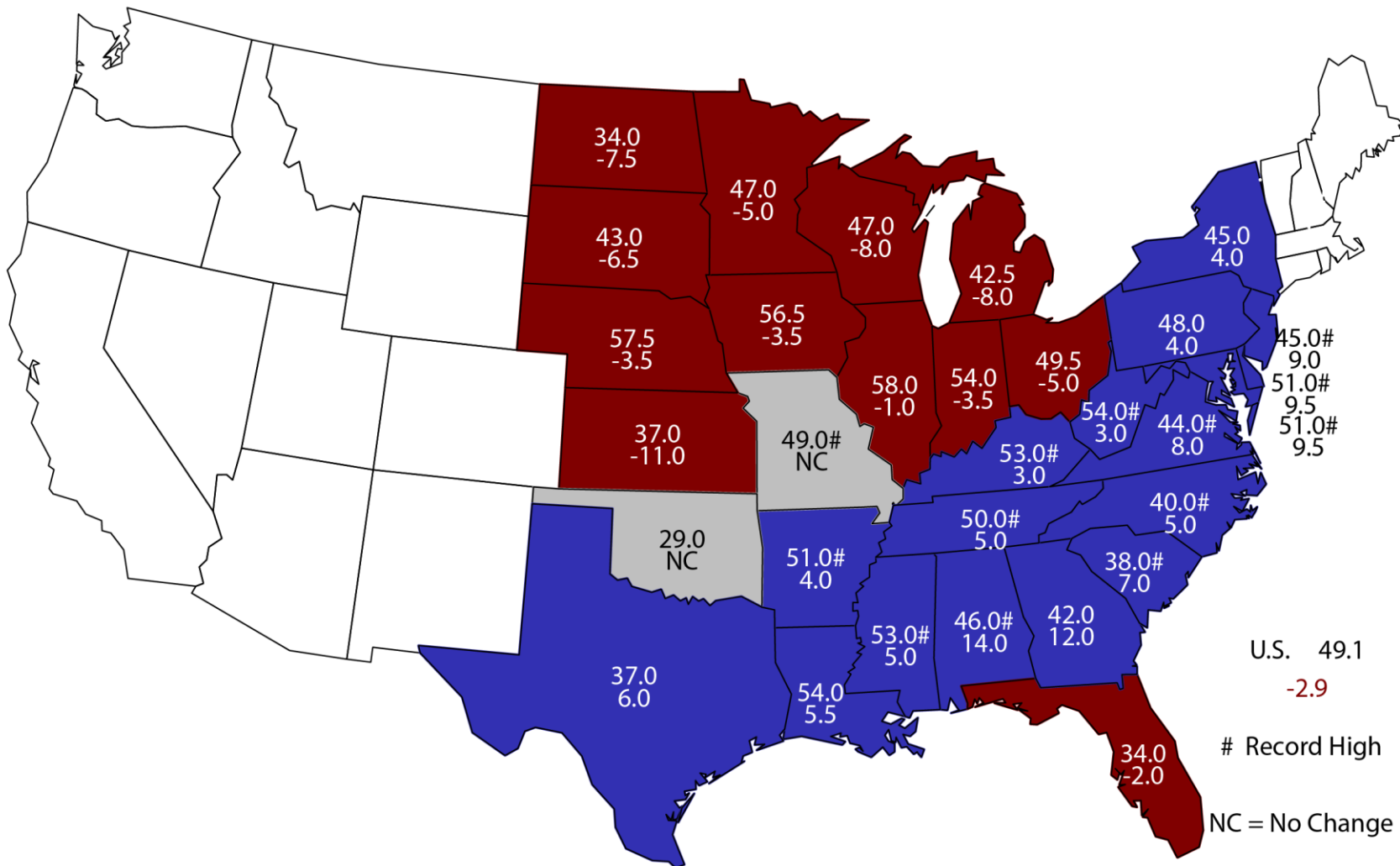
Soybean Yield United States

Bushels per Acre



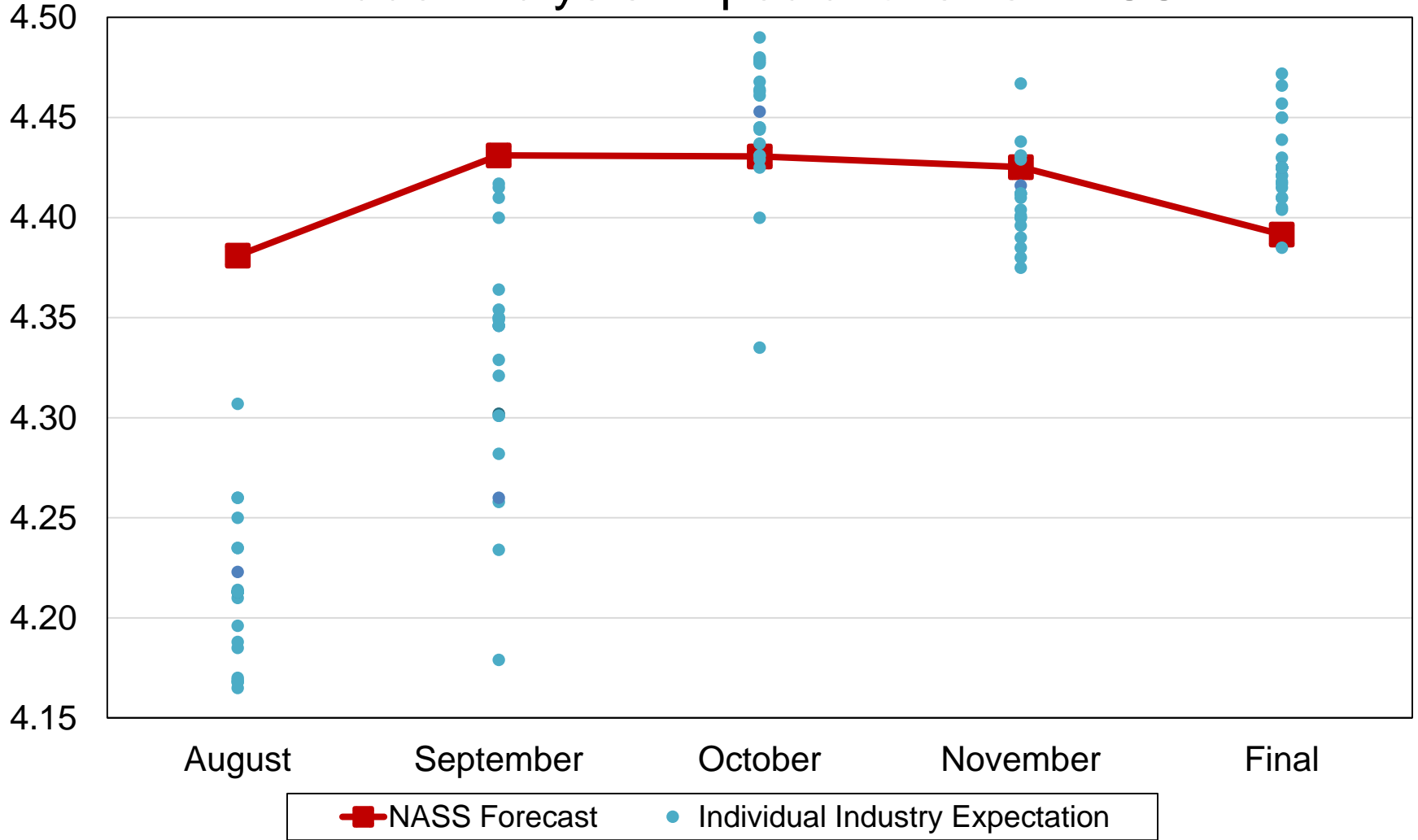
2017 Soybean Yield

Bushels and Change From Previous Year



2017 United States Soybean Production Trade Analysts Expectations vs NASS

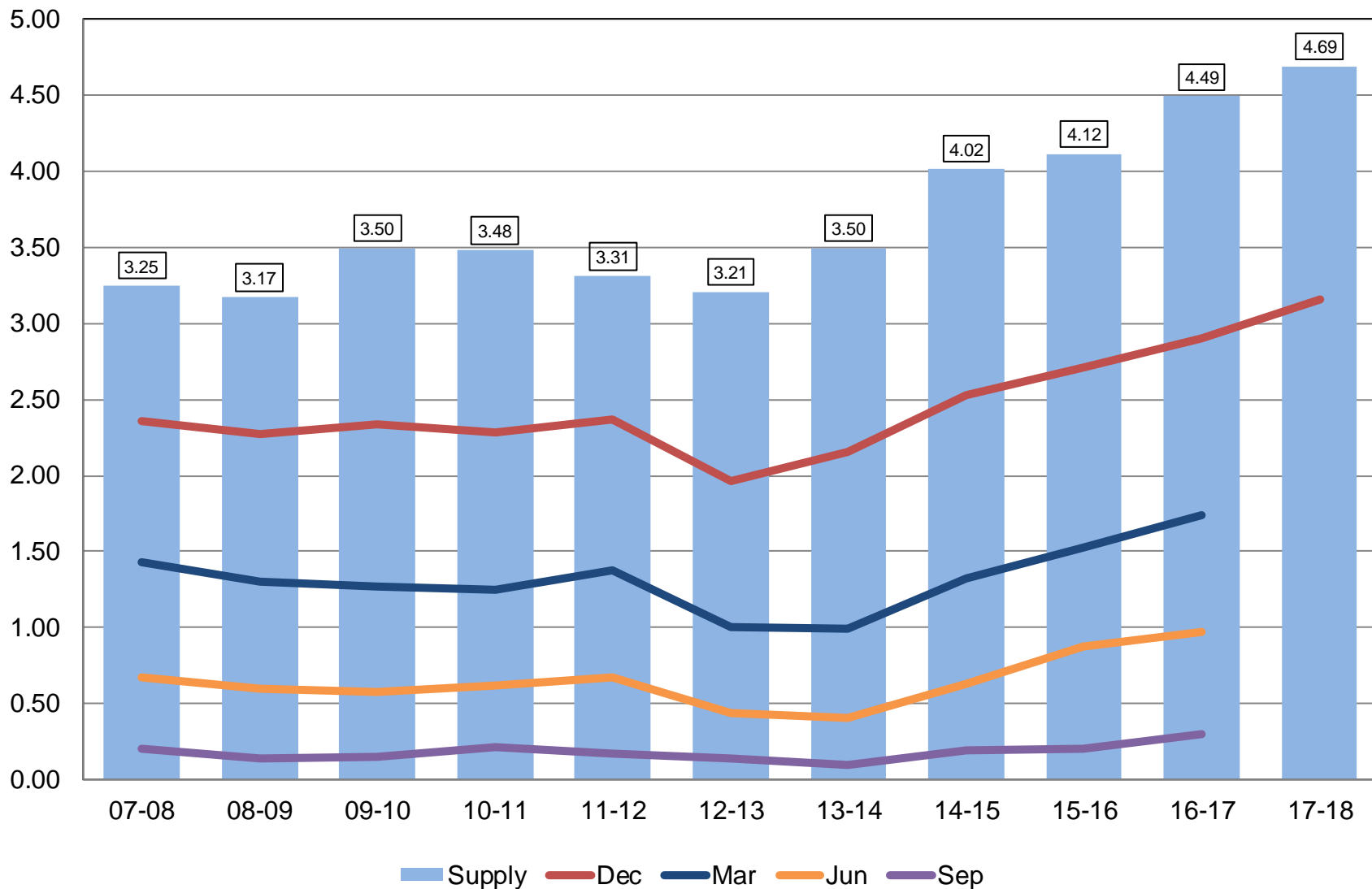
Billion Bushels





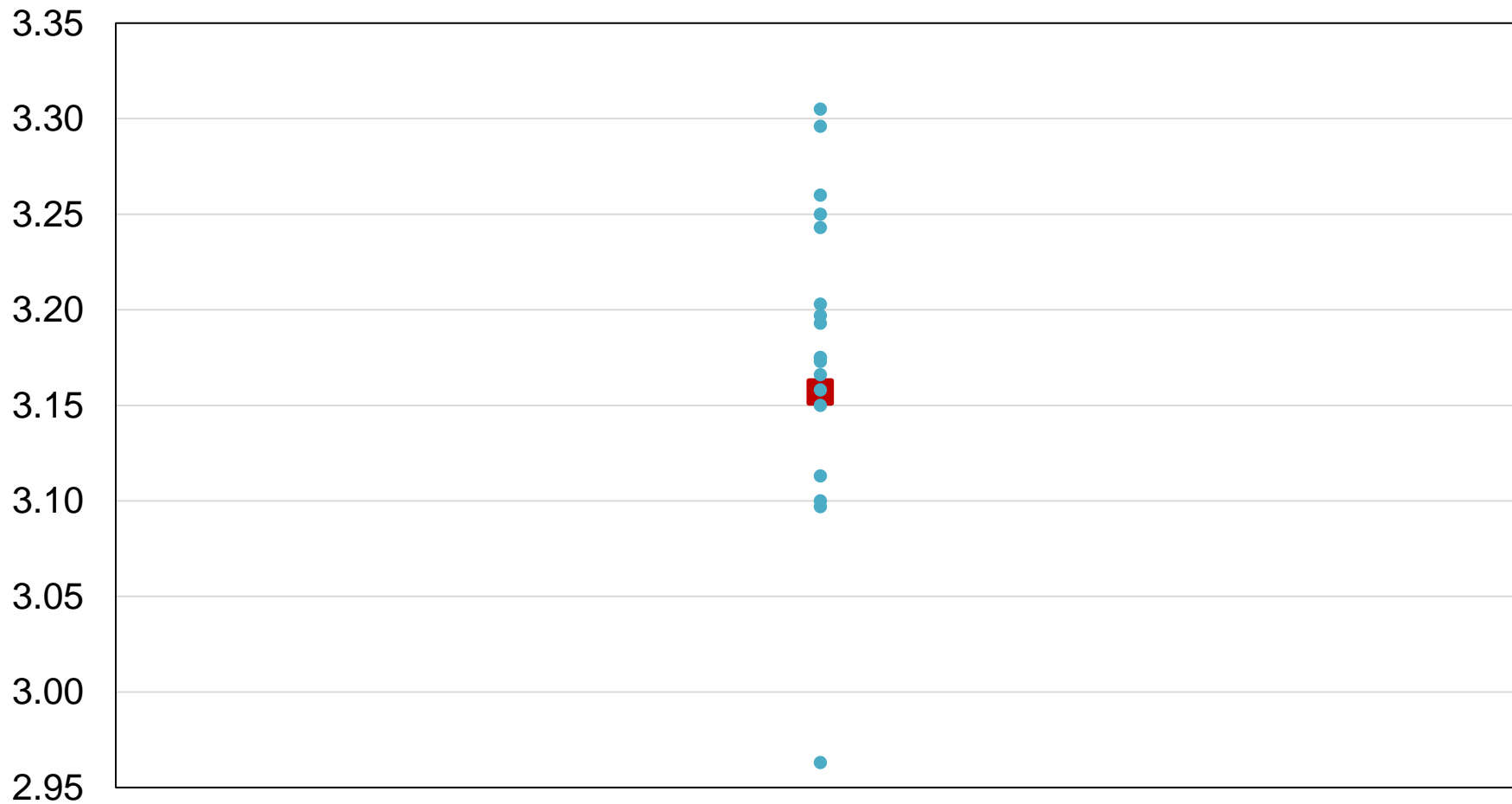
Soybean Stocks United States

Billion Bushels

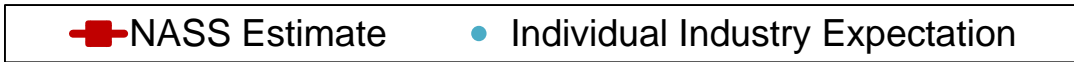


2017 United States Soybean Stocks Trade Analysts Expectations vs NASS

Billion Bushels



December



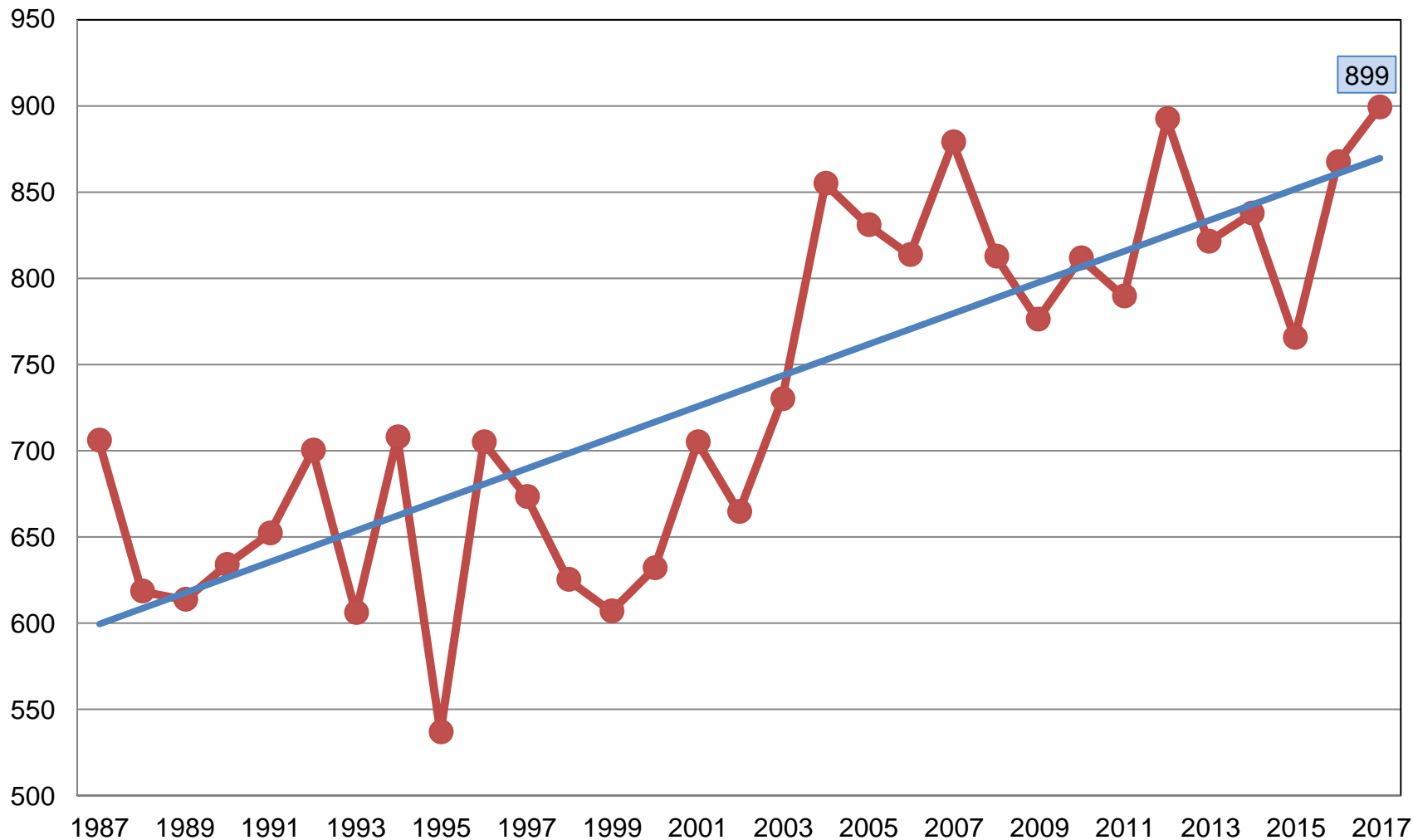


2017 Crop Production – Annual

Crop	Unit	January 2018	% Change From Previous Forecast	% Change From Previous Season
All Cotton				
Planted	Mil Ac	12.6	-0.1	+25.2
Harvested	Mil Ac	11.3	-0.5	+19.4
Yield	Lb/Ac	899	-0.3	+3.7
Production	Mil Bls	21.3	-0.8	+23.8
Cottonseed				
Production	Mil Tons	6.73	-0.9	+25.3

All Cotton Yield United States

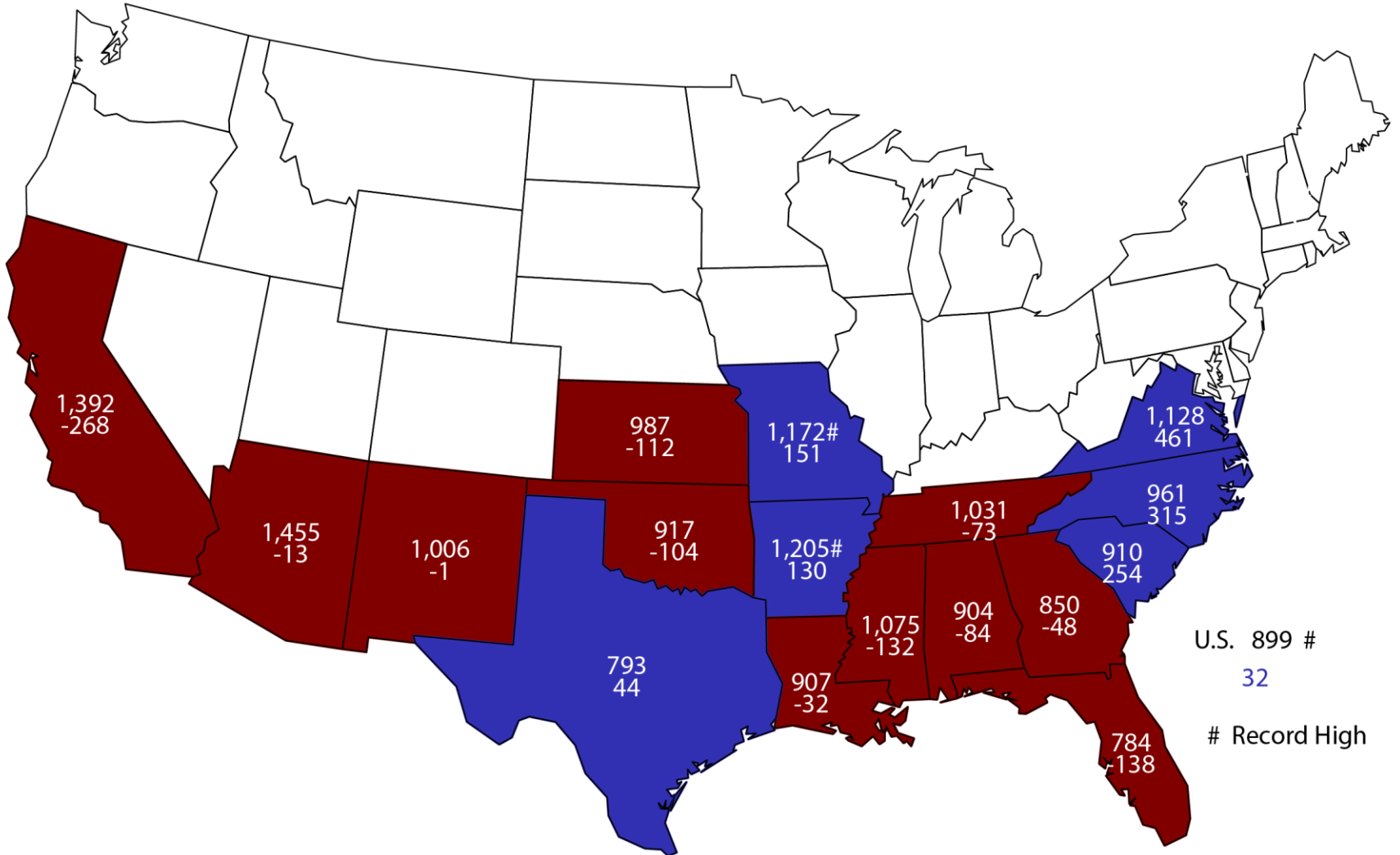
Pounds per Acre



● Yield — Linear (Yield)

2017 All Cotton Yield

Pounds and Change From Previous Year





2017 Crop Production – Annual

Crop	Unit	January 2018	% Change From Previous Forecast	% Change From Previous Season
Sorghum				
Planted	Mil Ac	5.63	-1.5	-15.9
Harvested	Mil Ac	5.05	-0.1	-18.1
Yield	Bu/Ac	72.1	+2.4	-7.4
Production	Mil Bu	364	+2.3	-24.2
Stocks	Mil Bu	226	NA	-26.9



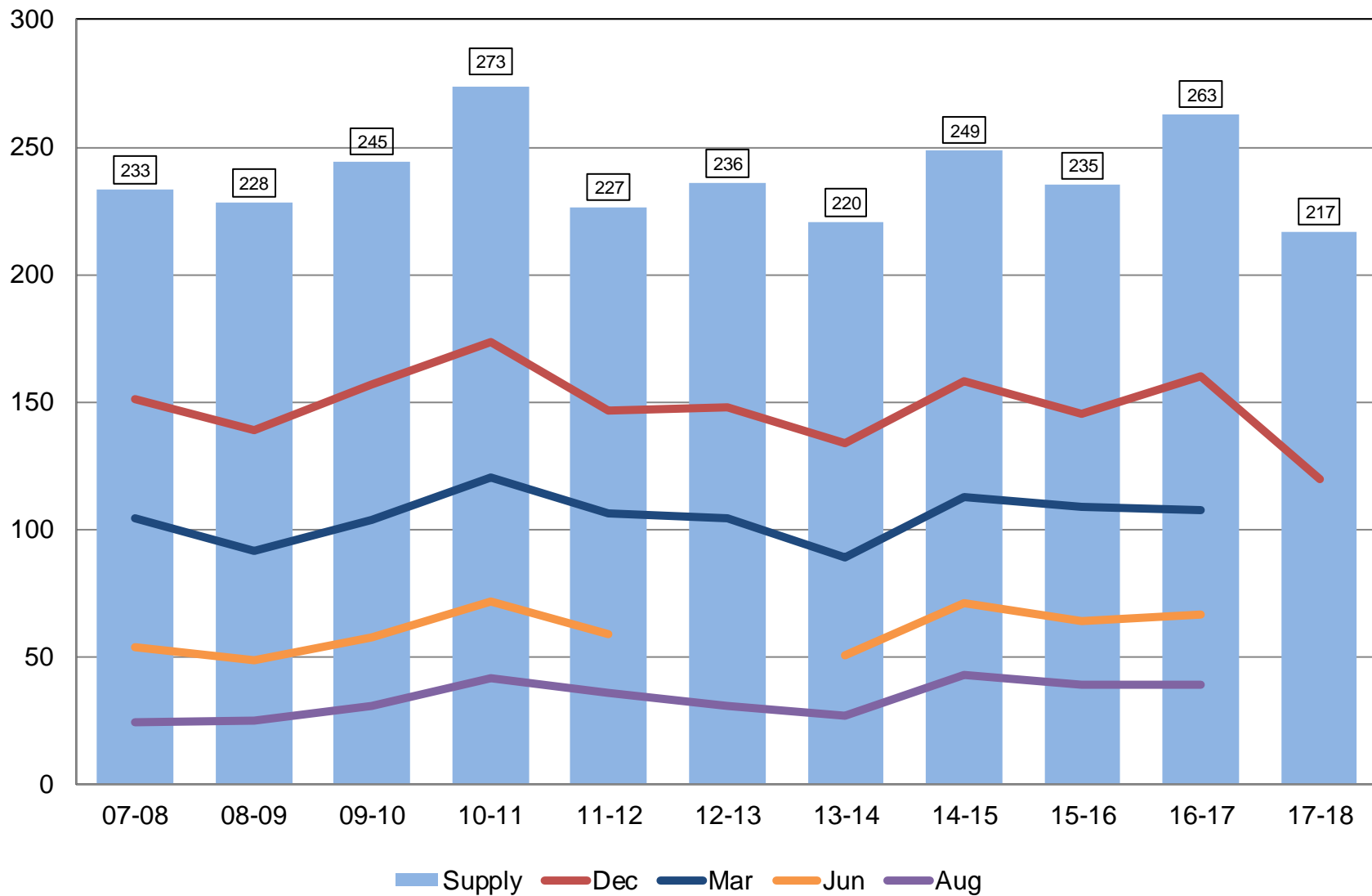
2017 Crop Production – Annual

Crop	Unit	January 2018	% Change From Previous Forecast	% Change From Previous Season
Rice				
Planted	Mil Ac	2.46	-1.0	-21.8
Harvested	Mil Ac	2.37	-0.7	-23.3
Yield	Lbs/Ac	7,507	+0.6	+3.7
Production	Mil Cwt	178	-0.1	-20.5
Stocks	Mil Cwt	120	NA	-25.4



Rough Rice Stocks United States

Million Hundredweight



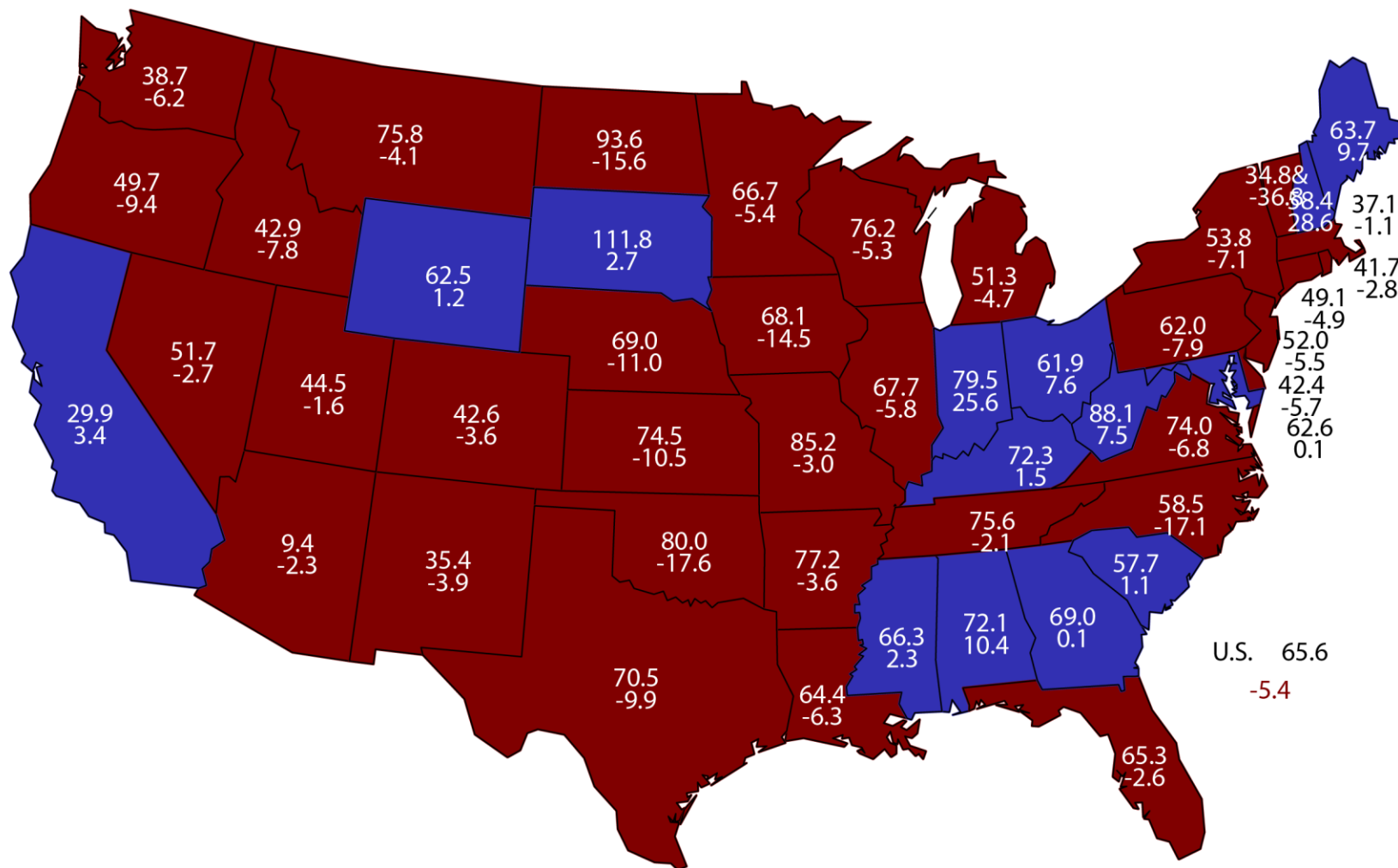


2017 Crop Production – Annual

Crop	Unit	January 2018	% Change From Previous Forecast	% Change From Previous Season
All Hay				
Harvested	Mil Ac	53.8	+0.5	+0.6
Yield	Tons/Ac	2.44	-0.8	-3.2
Production	Mil Tons	131	-0.3	-2.6
Stocks	Mil Tons	86.2	NA	-10.0

December 1, 2017 Hay Stocks/Production

Percent and Change From Previous Year





2017 Crop Production – Annual

Crop	Unit	January 2018	% Change From Previous Forecast	% Change From Previous Season
Production				
All Other Hay	Mil Tons	76.4	+0.7	-0.4
Alfalfa Hay	Mil Tons	55.1	-1.7	-5.5
Proso Millet	Mil Bu	14.6	NA	+16.0
Peanuts	Bil Lbs	7.23	-5.3	+29.6



2017 Crop Production – Annual

Crop	Unit	January 2018	% Change From Previous Forecast	% Change From Previous Season
Production				
Canola	Bil Lbs	3.12	+11.2	+1.0
Flaxseed	Mil Bu	3.84	NA	-55.6
Mustard Seed	Mil Lbs	60.3	NA	-37.4
Rapeseed	Mil Lbs	20.8	NA	+7.4
Safflower	Mil Lbs	180	NA	-17.7
Sunflowers	Bil Lbs	2.17	+19.8	-18.2



2017 Crop Production – Annual

Crop	Unit	January 2018	% Change From Previous Forecast	% Change From Previous Season
Production				
Sugarcane	Mil Tons	32.2	+0.4	+0.4
Sugarbeets	Mil Tons	35.3	-2.0	-4.3
All Tobacco	Mil Lbs	710	-1.9	+13.0



2017 Crop Production – Annual

Crop	Unit	January 2018	% Change From Previous Forecast	% Change From Previous Season
Production				
A. Winter Peas	Thou Cwt	125	-10.1	-72.8
Dry Peas	Mil Cwt	14.2	-7.7	-48.9
Dry Beans	Mil Cwt	35.8	+1.5	+24.9
Lentils	Mil Cwt	7.48	+0.3	-41.5
Wrinkled Seed	Thou Cwt	357	NA	-18.7



2017 Crop Production – Annual

Crop	Unit	January 2018	% Change From Previous Forecast	% Change From Previous Season
Production				
Potatoes	Mil Cwt	441	<+0.1	<-0.1
Sweet Potatoes	Mil Cwt	35.6	NA	+13.0
Peppermint Oil	Mil Lbs	5.78	NA	+1.1
Spearmint Oil	Mil Lbs	2.80	NA	-12.8
Taro (Hawaii)	Mil Lbs	3.69	NA	+5.2
Hops	Mil Lbs	104	NA	+19.8



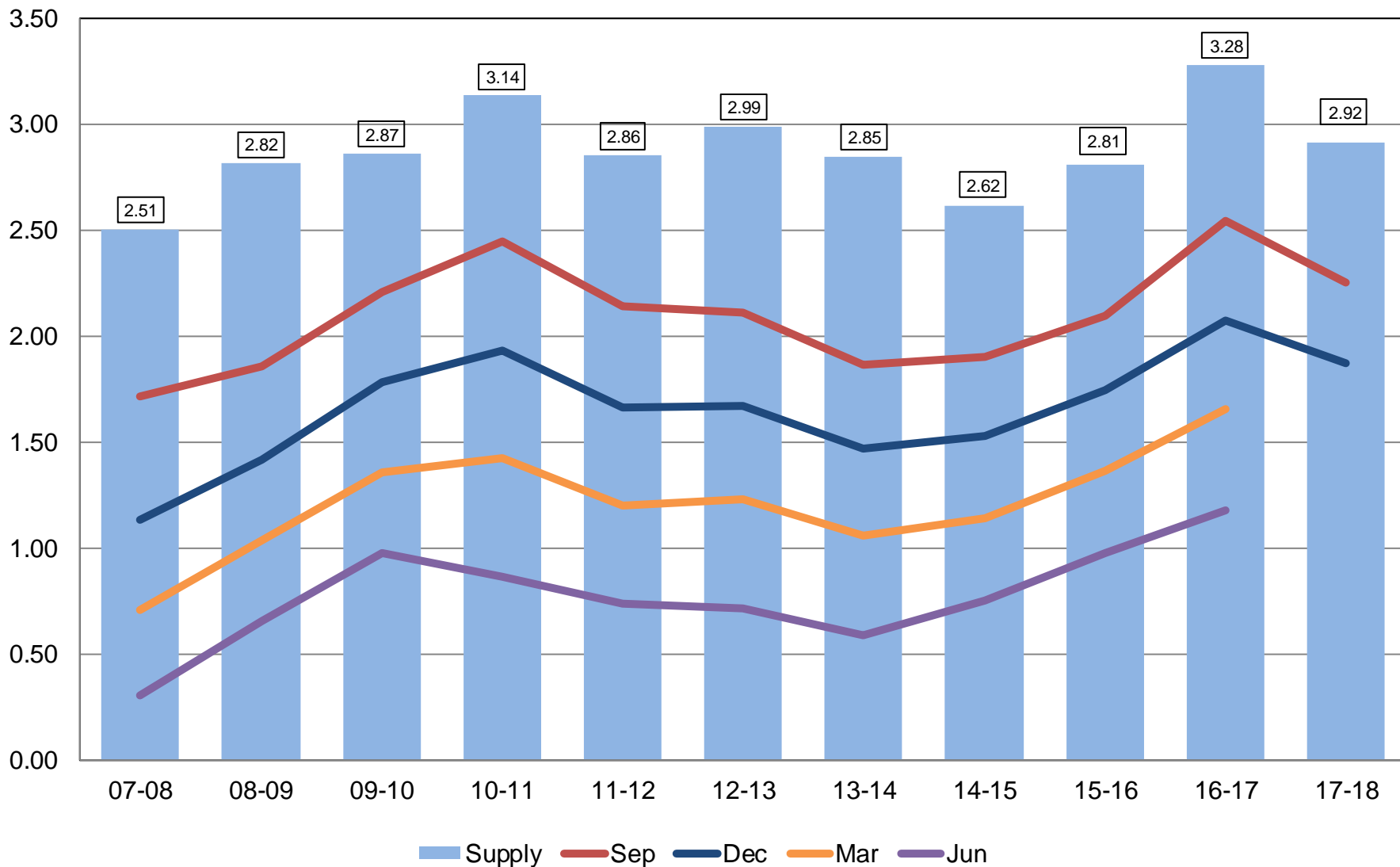
2017 Crop Production – Annual

Crop	Unit	January 2018	% Change From Previous Estimate	% Change From Previous Year
Stocks				
All Wheat	Bil Bu	1.87	NA	-9.9
Barley	Mil Bu	155	NA	-19.4
Oats	Mil Bu	66.8	NA	-11.5



All Wheat Stocks United States

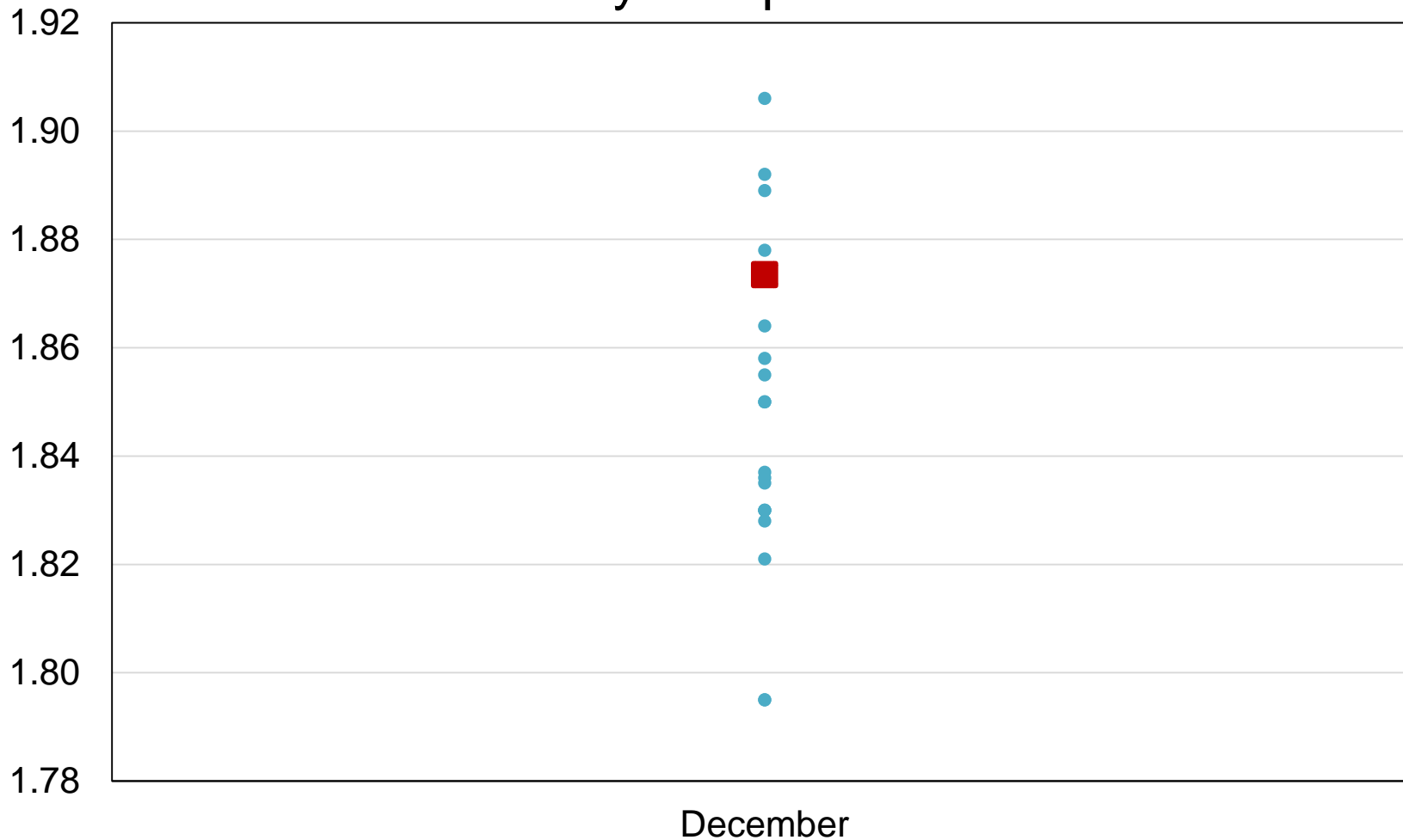
Billion Bushels





2017 United States All Wheat Stocks Trade Analyst Expectations vs NASS

Billion Bushels



 NASS Estimate  Individual Industry Expectation



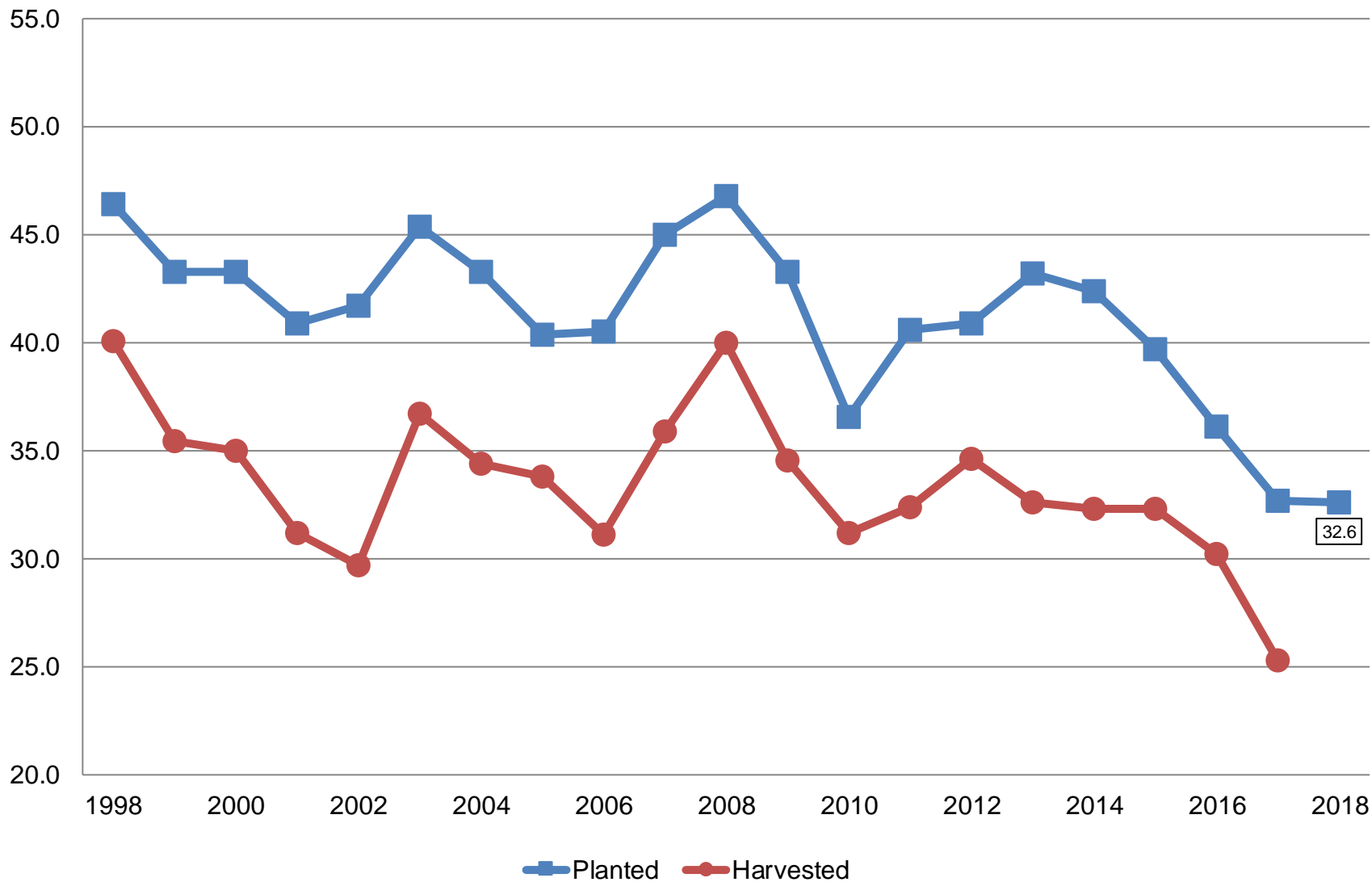
Winter Wheat Seedings

Crop	Unit	January 2018	% Change From Previous Forecast	% Change From Previous Season
Wheat, Winter				
Planted	Mil Ac	32.6	NA	-0.3



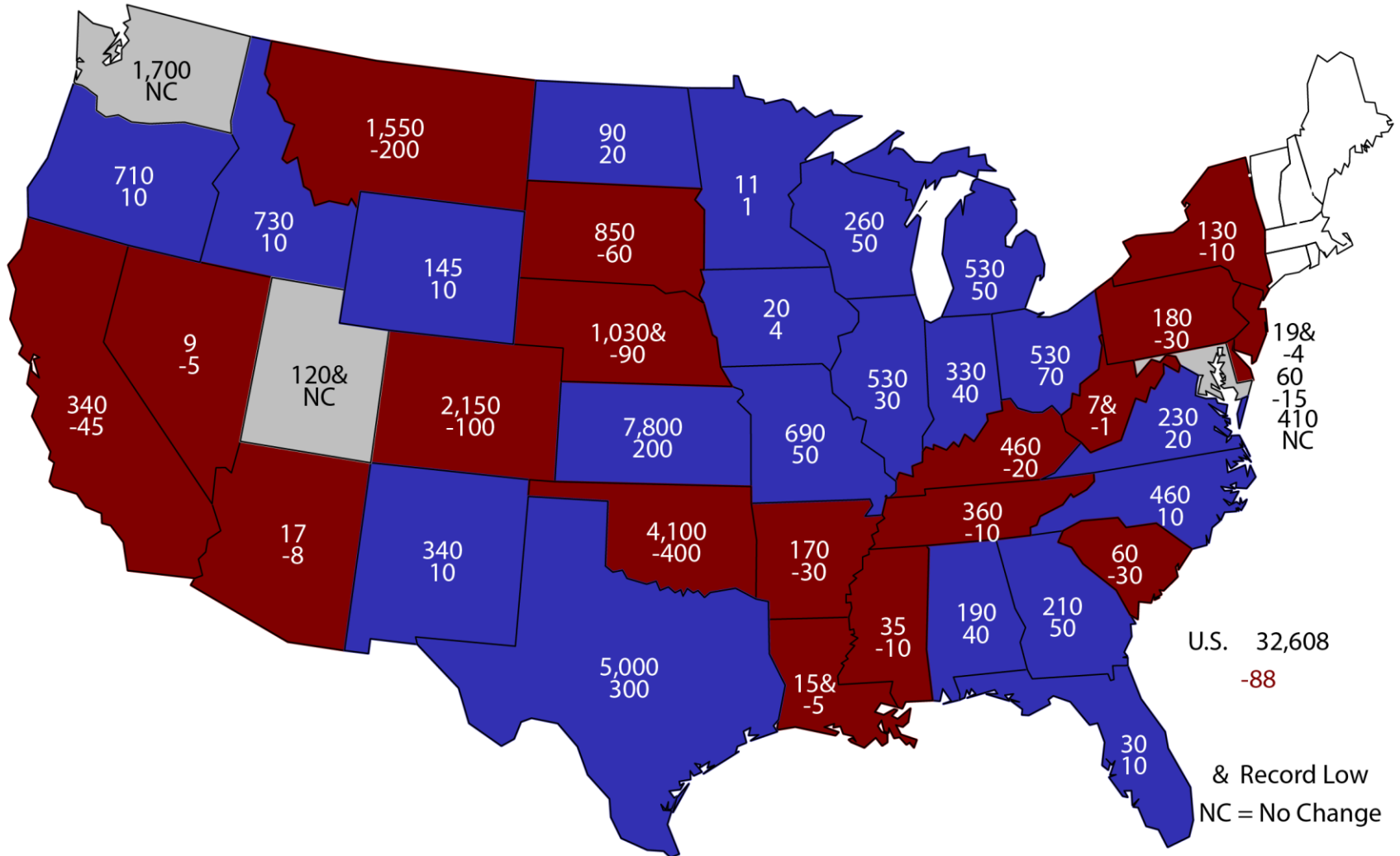
Winter Wheat Acres United States

Million Acres



2018 Winter Wheat Planted Area

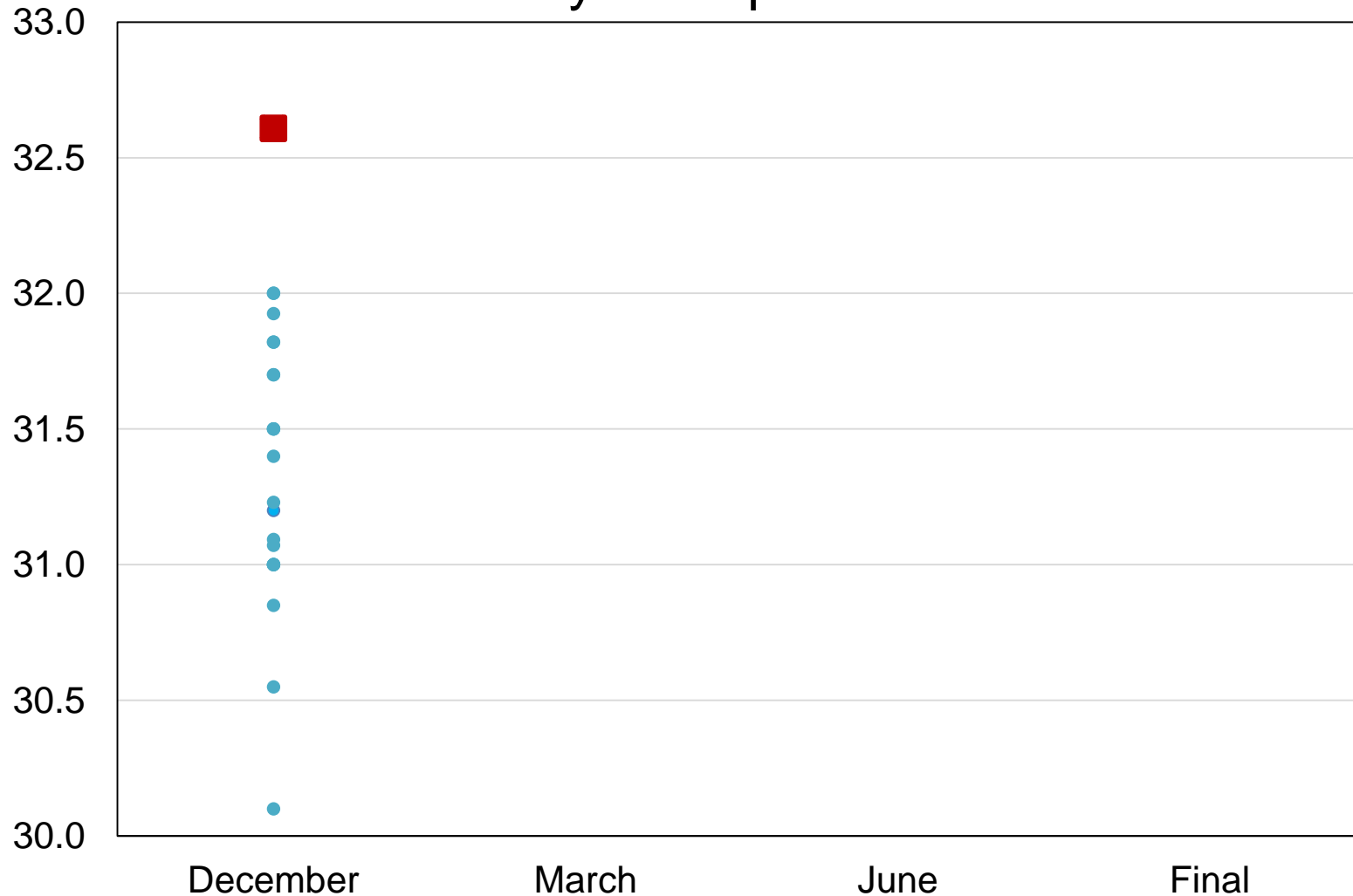
(000) Acres and Change From Previous Year



& Record Low
NC = No Change

2018 United States Winter Wheat Acres Trade Analysts Expectations vs NASS

Million Acres



■ NASS Estimate
 ● Individual Industry Expectation



Survey Overview

Florida Citrus

	Objective Measurement
Survey Type	Field Measurement
Crops Included	Oranges, Grapefruit, Tangerines
Sample Size	1,732 groves
Collection Period	December 11-22



January 2018 Crop Production

Crop	Unit	January 2018	% Change From Previous Forecast	% Change From Previous Season
Production				
Oranges	Mil Tons	3.99	+0.2	-22.8
Grapefruit	Thou Tons	530	-8.3	-22.3
Lemons	Thou Tons	870	-3.8	-1.8
Tangerines & Mandarins	Thou Tons	881	-8.5	-14.7



Upcoming Reports

Release Date	Report Title
January 22	Cotton Ginnings
January 26	Cattle on Feed
January 30	Agricultural Prices
January 31	Cattle Sheep and Goats
February 1	CAIR: Cotton System CAIR: Fats and Oils CAIR: Flour Millings CAIR: Grain Crushings
February 8	Cotton Ginnings Crop Production
February 22	County Estimates Corn, Soybeans, Sorghum, Sunflower

**USDA's
94th
Annual**

Agricultural Outlook Forum

THE ROOTS OF PROSPERITY

February 22-23, 2018

**Crystal Gateway Marriott Hotel
Arlington, Virginia**



2017 CENSUS OF AGRICULTURE

YOUR VOICE. YOUR FUTURE. YOUR OPPORTUNITY.

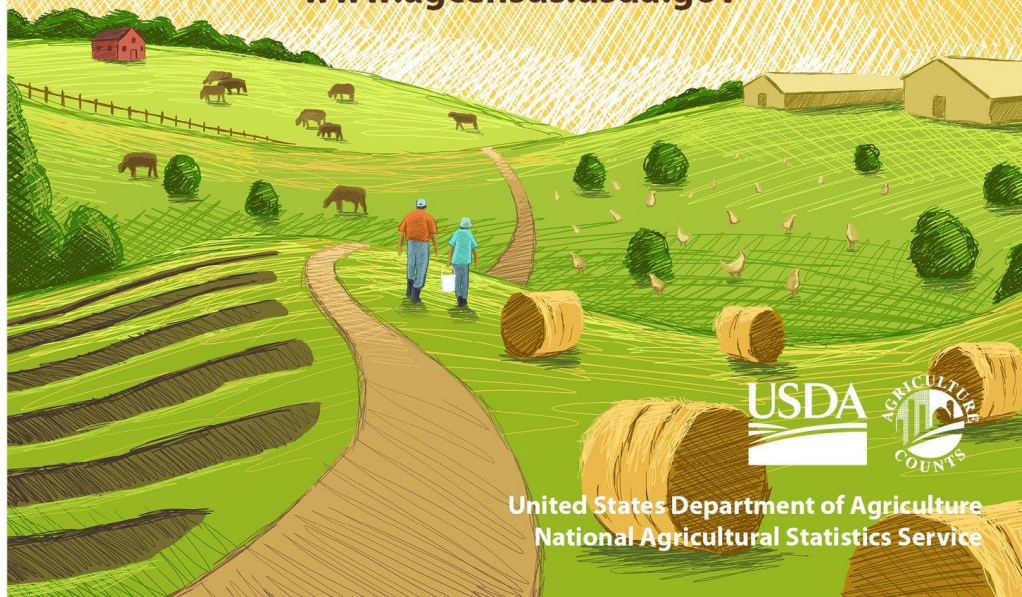
Respond Now

Be counted. Answers to the Census of Agriculture can help grow your farm's future, shape farm programs, and boost services for communities and the industry.

Respond Online. www.agcounts.usda.gov

*For assistance completing the census,
call toll-free (888) 424-7828.*

www.agcensus.usda.gov



United States Department of Agriculture
National Agricultural Statistics Service

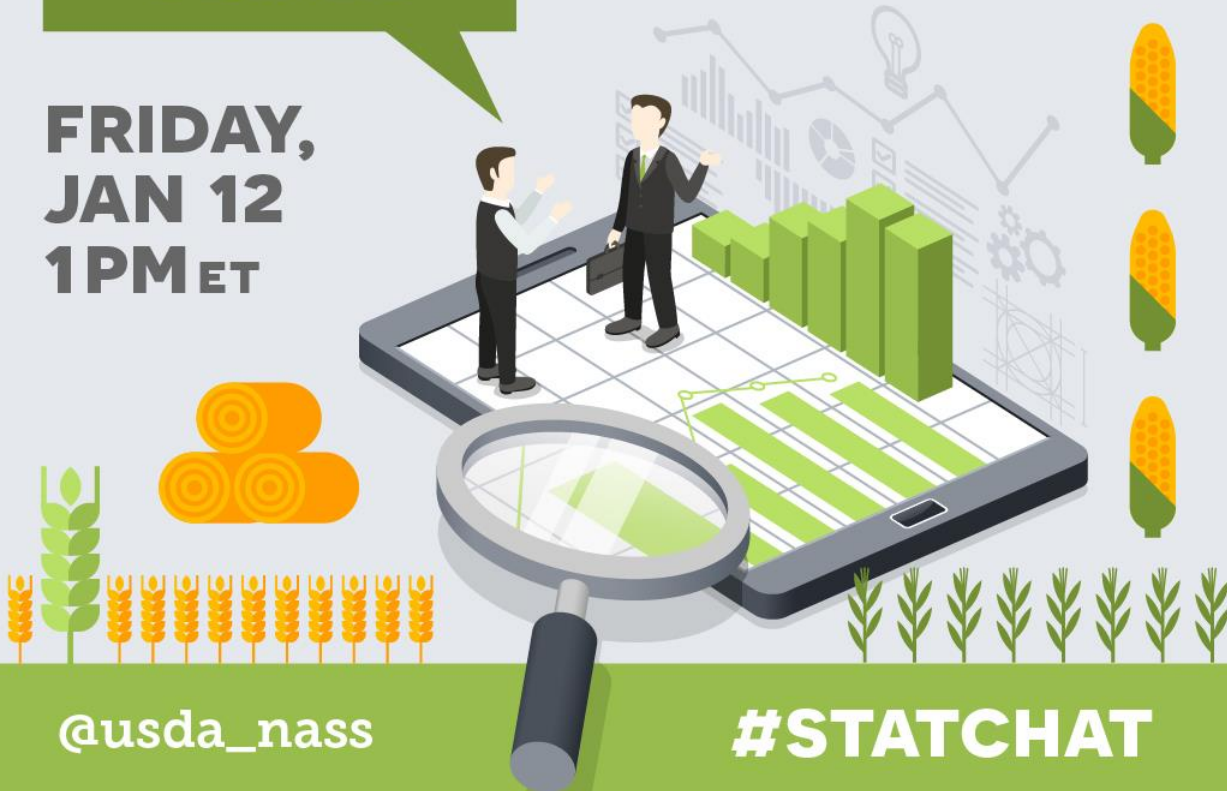
USDA-NASS
1-12-18



STAT CHAT SERIES

Join @usda_nass
using #StatChat to
ask NASS's Lance
Honig about the
Crop Production and
Grain Stocks reports.

**FRIDAY,
JAN 12
1PM ET**



@usda_nass

#STATCHAT

USDA-NASS
1-12-18



United States Department of Agriculture
National Agricultural Statistics Service

All Reports Available At
www.nass.usda.gov

For Questions
202-720-2127
800-727-9540
nass@nass.usda.gov