



United States Department of Agriculture  
**National Agricultural Statistics Service**

---

---

**August Crop Production**  
Executive Summary

Lance Honig, Chief  
Crops Branch



# Contents

Field Crops	Fruit and Nuts	Specialty Crops
Corn	Peaches	Dry Beans
Soybeans	Apples	Tobacco
Cotton	Pears	Sugarbeets
Wheat	Grapes	Sugarcane
Oats	Cranberries	Hops
Barley		Summer Potatoes
Sorghum		
Alfalfa & Other Hay		
Rice		
Peanuts		



# Survey Overview

	<b>Ag Yield</b>	<b>Objective Yield</b>
Survey Type	Farmer Reported	Field Measurement
Crops Included	Field Crops	Corn, Soybeans, Cotton, and Winter Wheat
Sample Size	21,646	4,544
Collection Period	July 30 – Aug 6	July 25 – Aug 1



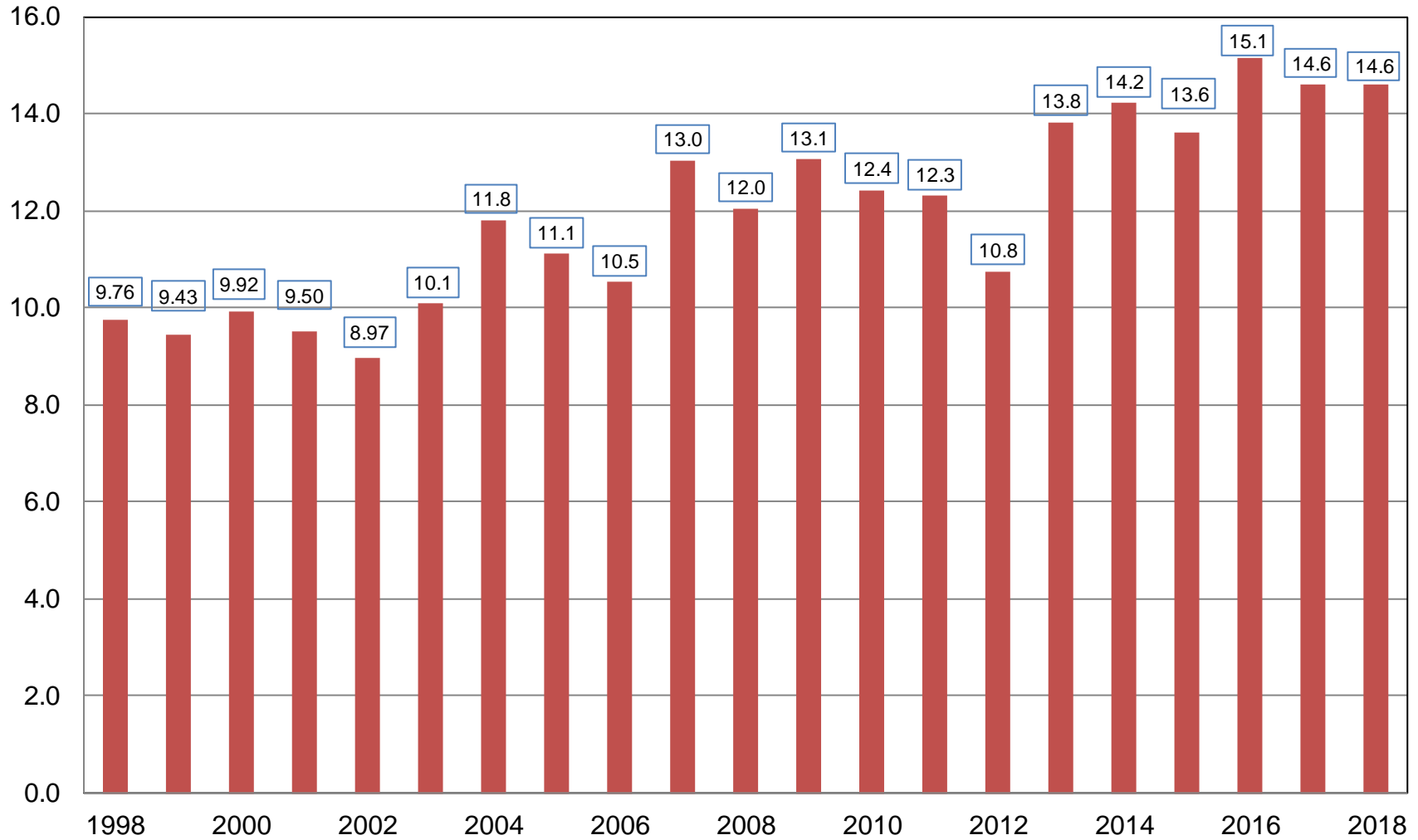
# August 2018 Crop Production

Crop	Unit	August 2018	% Change From Previous Forecast	% Change From Previous Season
Corn				
Planted	Mil Ac	89.1	NC	-1.2
Harvested	Mil Ac	81.8	NC	-1.1
Yield	Bu/Ac	178.4	NA	+1.0
Production	Bil Bu	14.6	NA	-0.1



# Corn for Grain Production United States

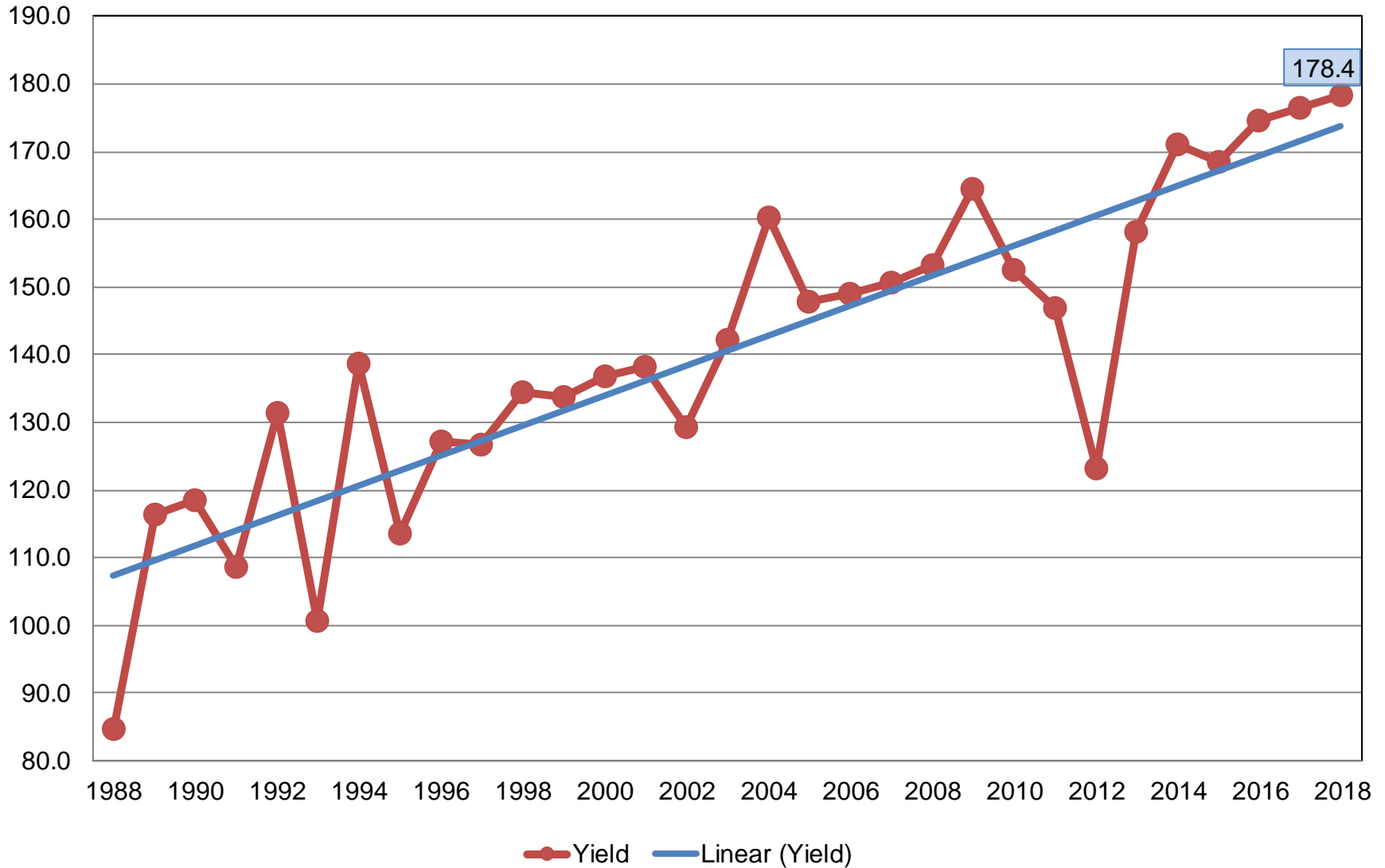
Billion Bushels





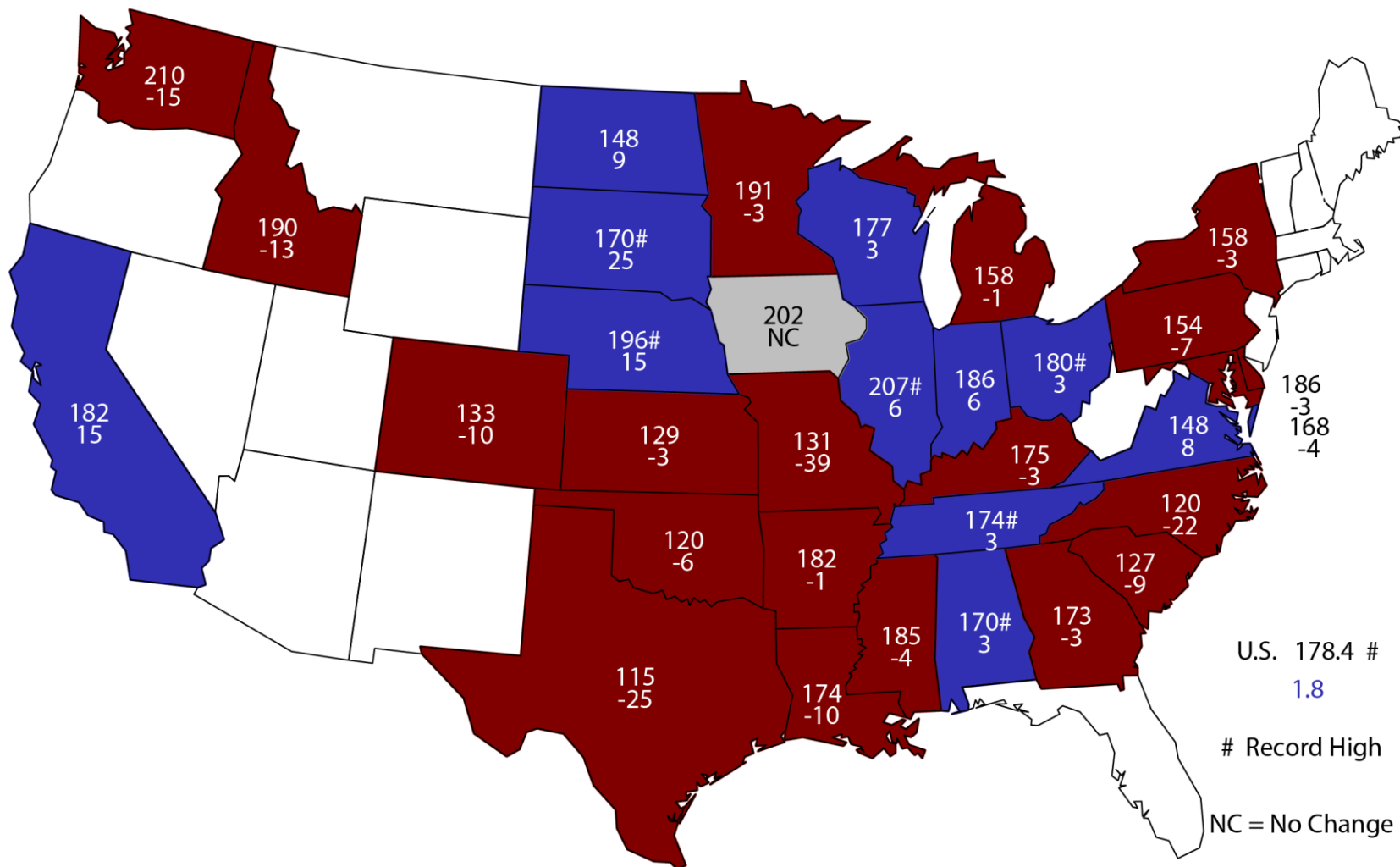
# Corn for Grain Yield United States

Bushels per Acre



# August 1, 2018 Corn Yield

## Bushels and Change From Previous Year

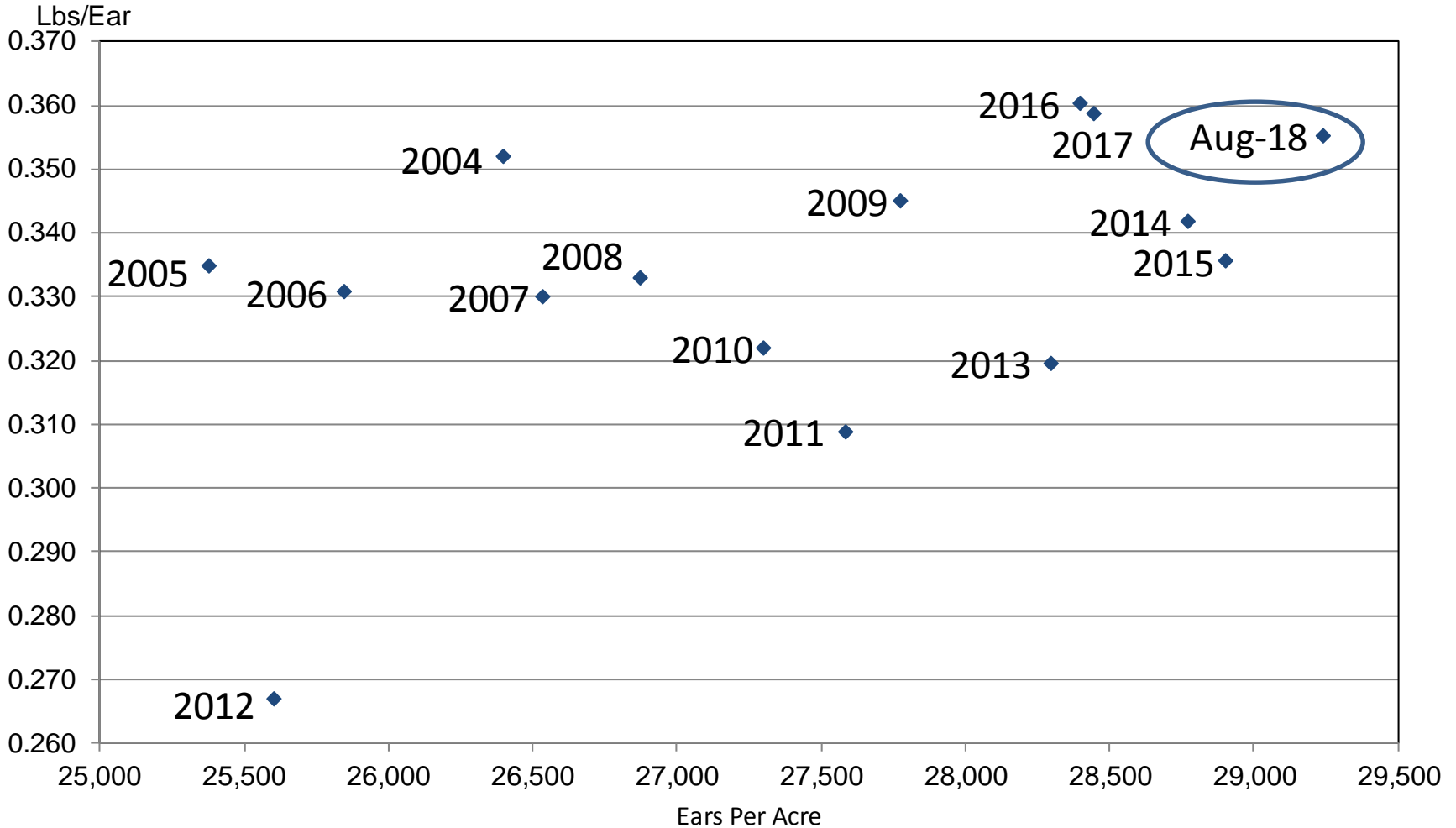


U.S. 178.4 #  
 1.8  
 # Record High  
 NC = No Change



# Corn Objective Yield Region

## Ears Per Acre vs. Implied Ear Weight

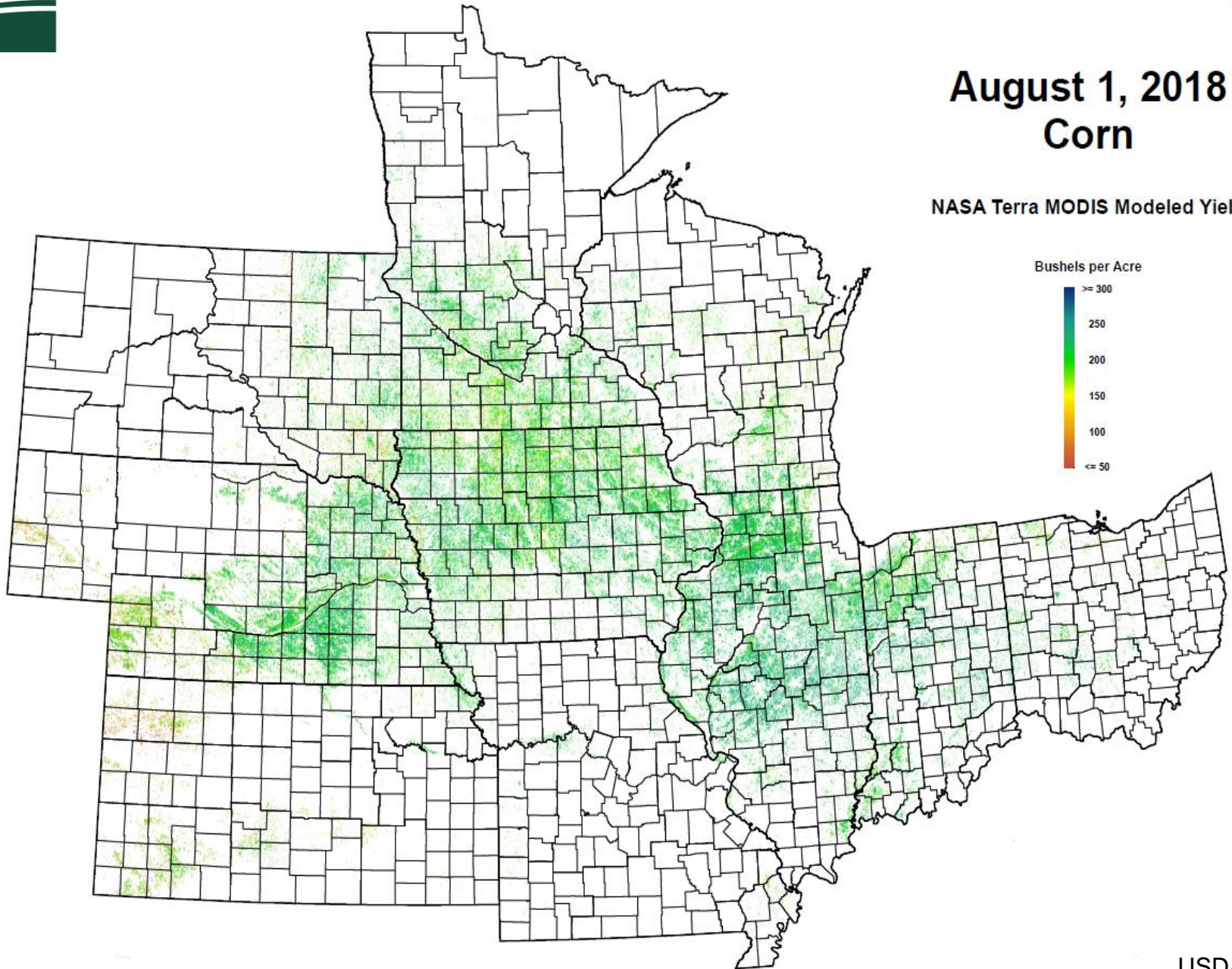


$$\text{Implied Ear Weight} = (\text{Published Yield} * 56) / \text{Ears}$$



# August 1, 2018 Corn

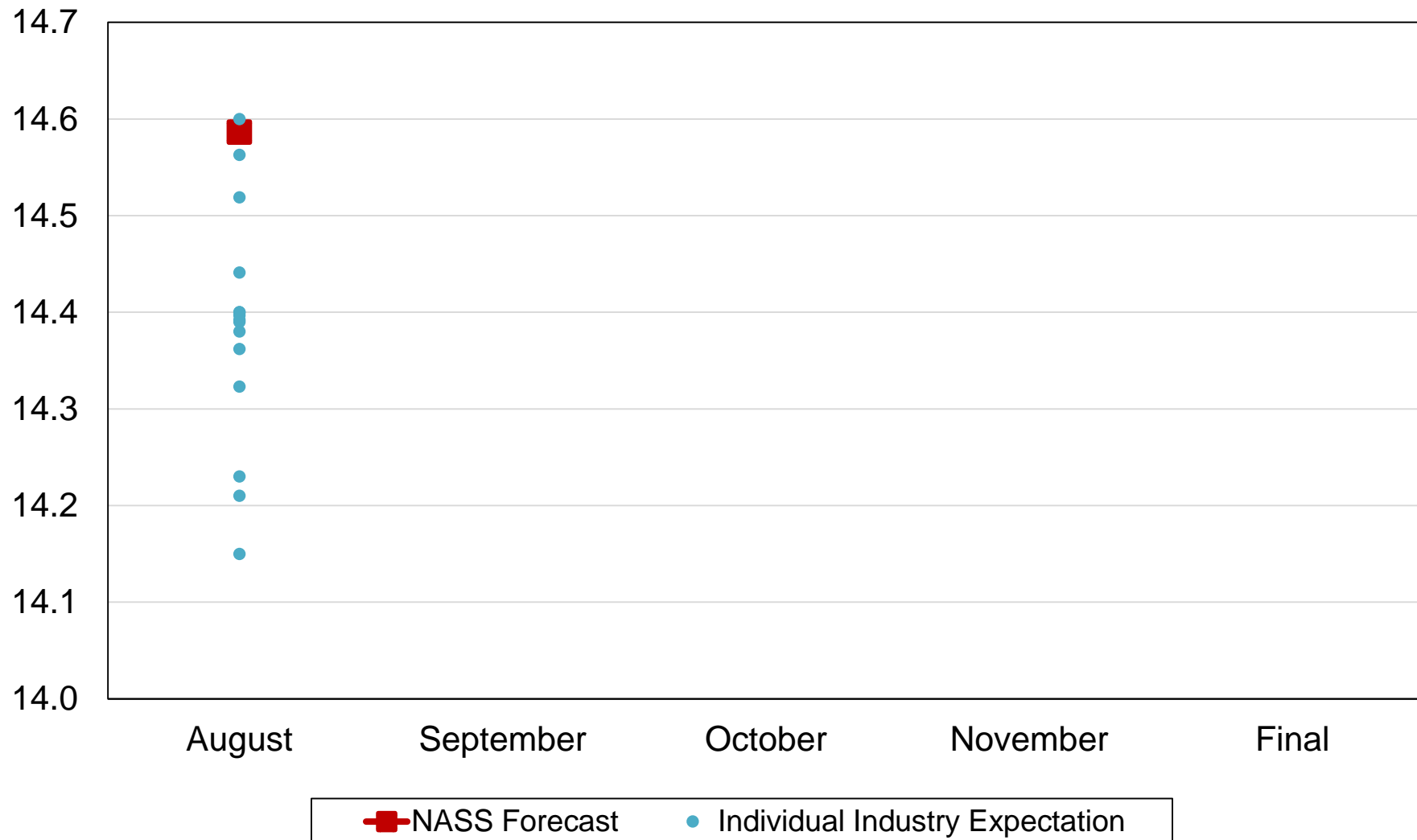
NASA Terra MODIS Modeled Yield





# 2018 United States Corn Production Industry Expectations vs NASS

Billion Bushels





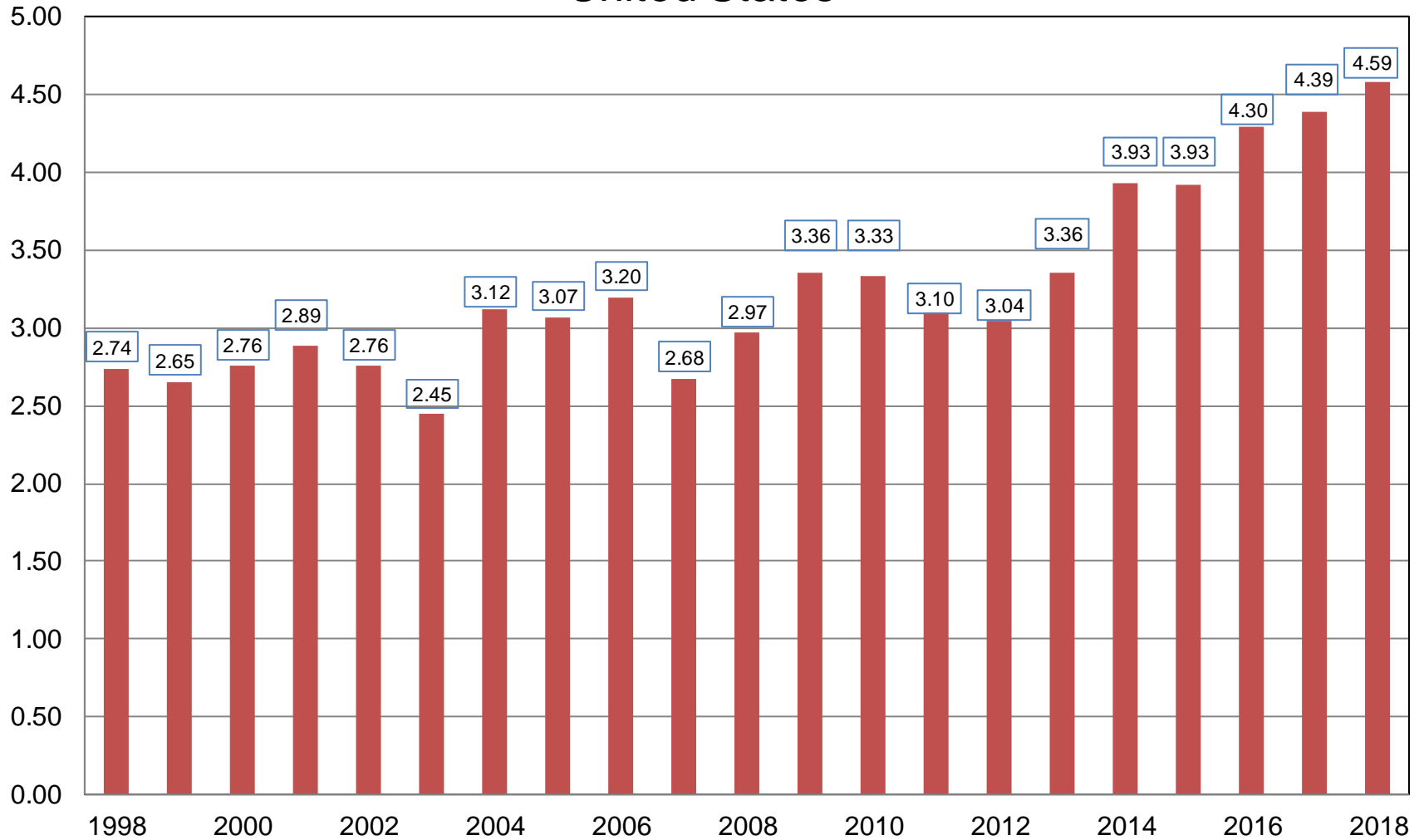
# August 2018 Crop Production

Crop	Unit	August 2018	% Change From Previous Forecast	% Change From Previous Season
Soybeans				
Planted	Mil Ac	89.6	NC	-0.6
Harvested	Mil Ac	88.9	NC	-0.7
Yield	Bu/Ac	51.6	NA	+5.1
Production	Bil Bu	4.59	NA	+4.4



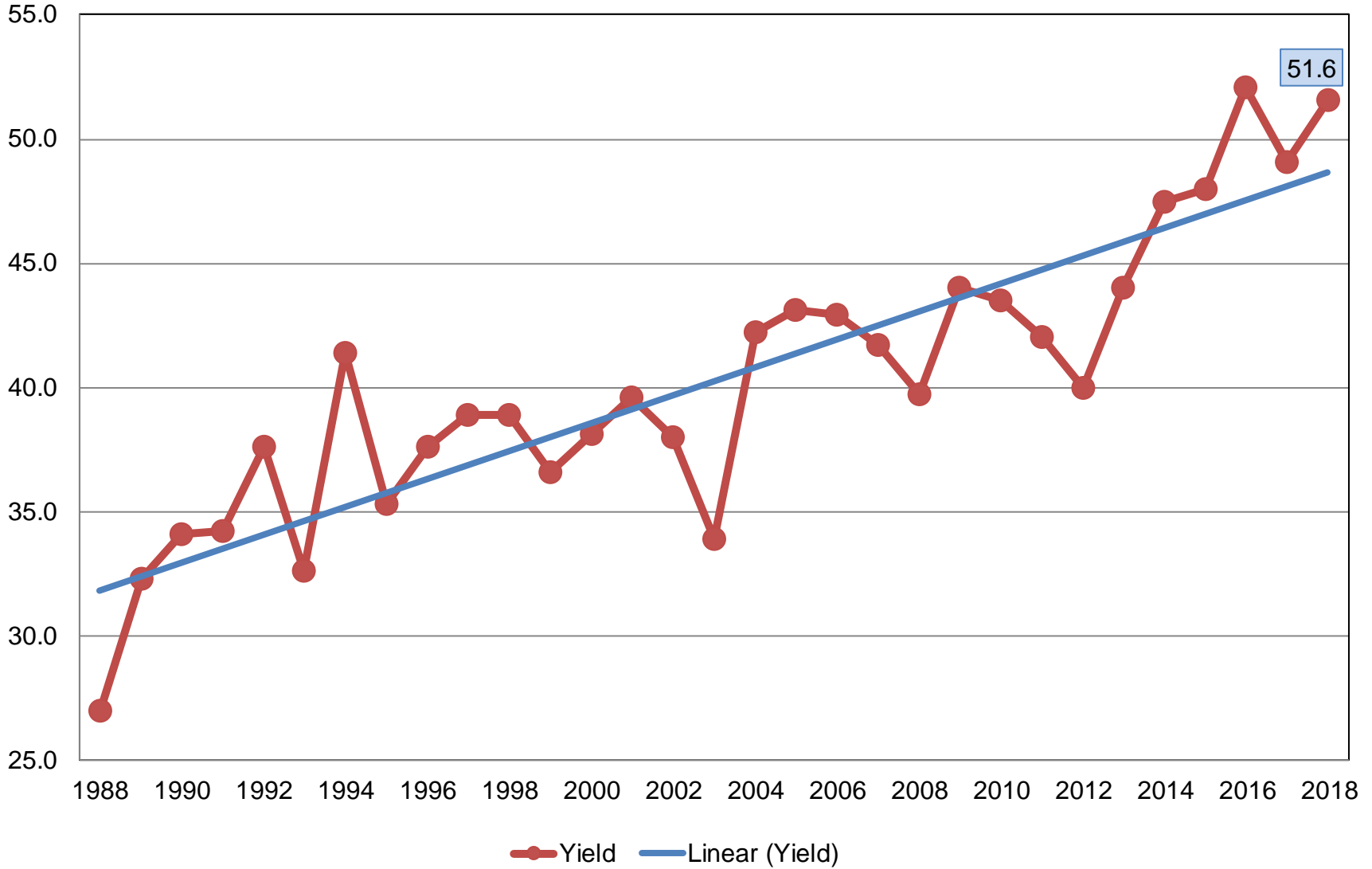
# Soybean Production United States

Billion Bushels



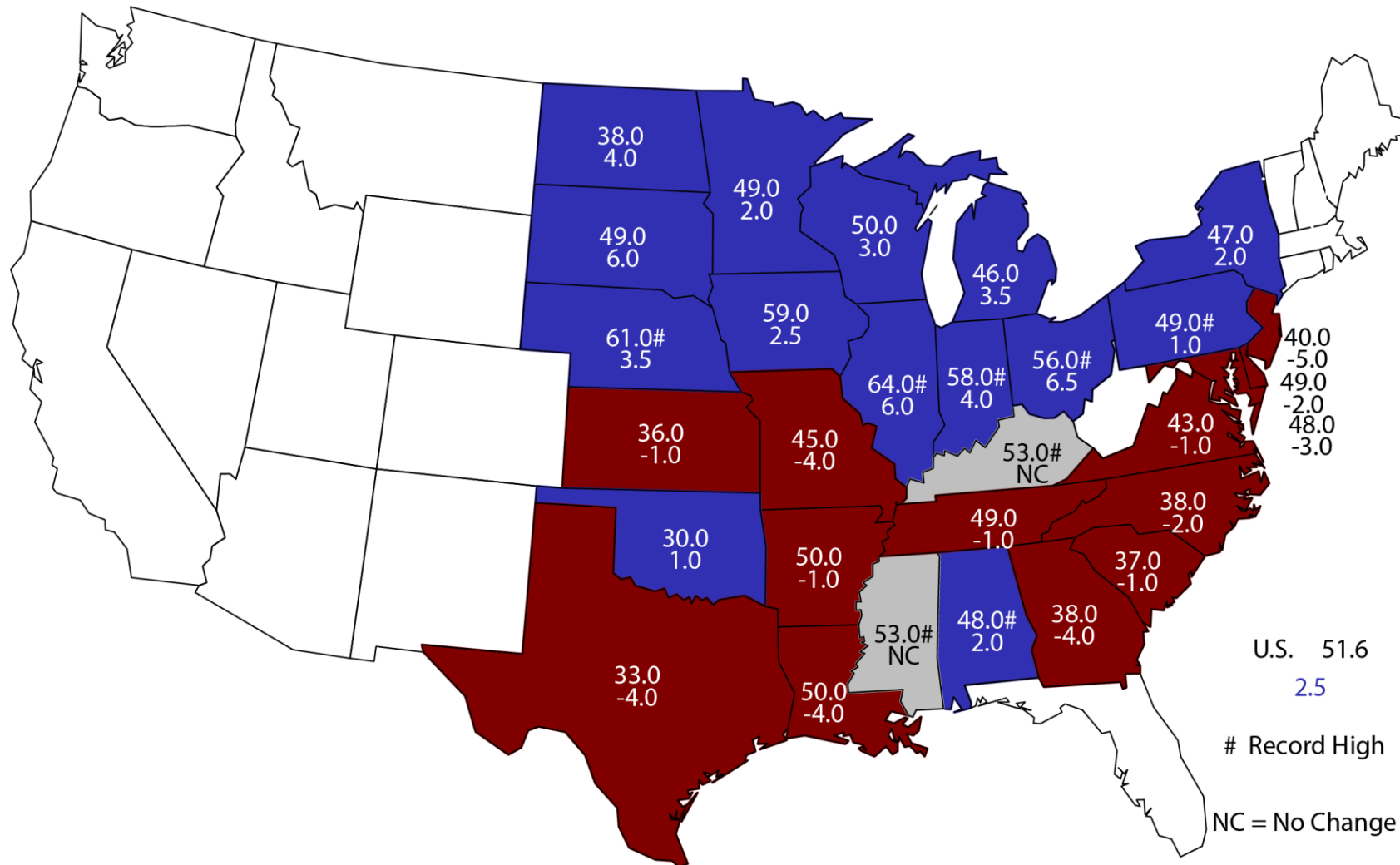
# Soybean Yield United States

Bushels per Acre



# August 1, 2018 Soybean Yield

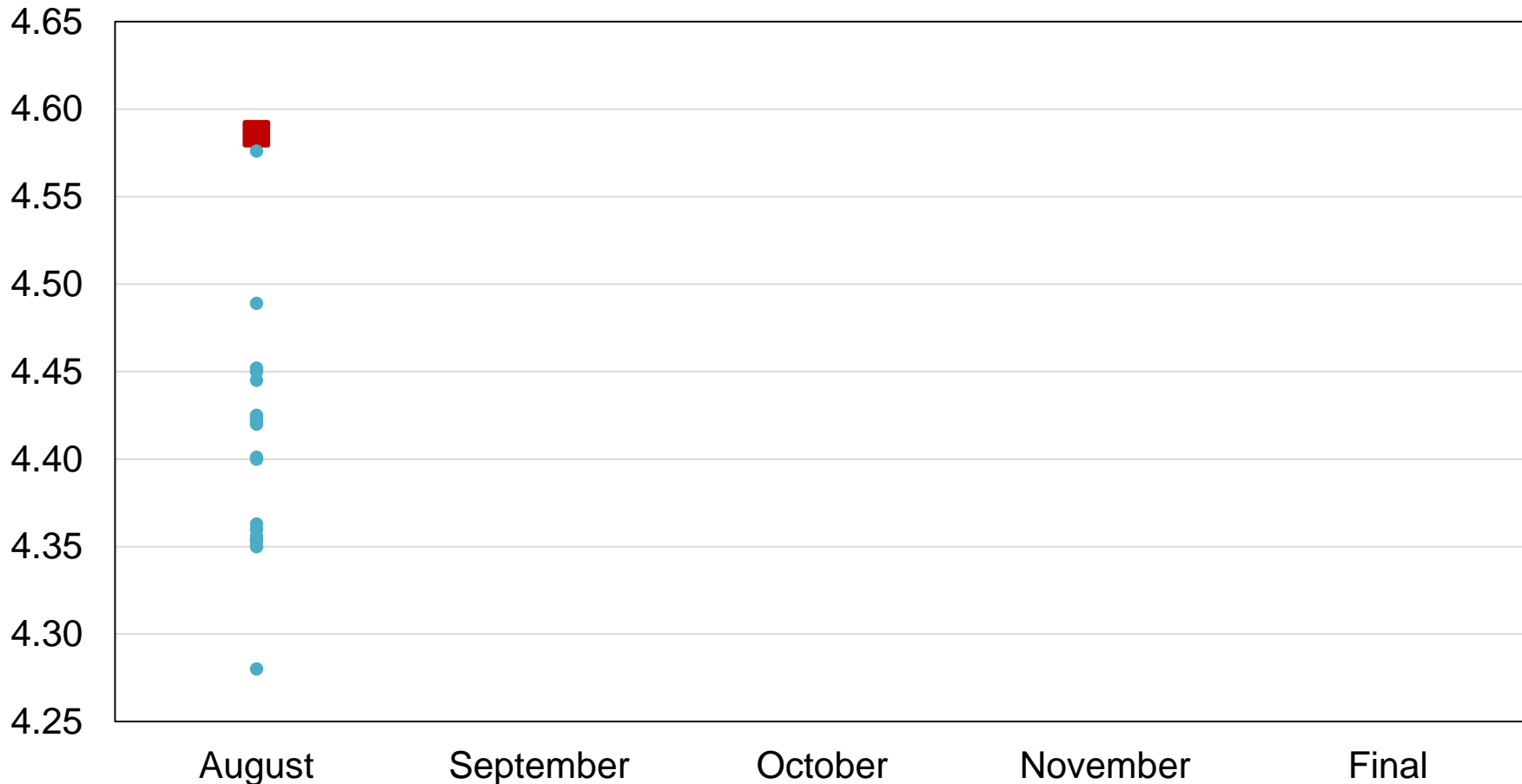
## Bushels and Change From Previous Year



# Record High  
 NC = No Change

# 2018 United States Soybean Production Industry Expectations vs NASS

Billion Bushels



■ NASS Forecast     
 ● Individual Industry Expectation



# August 2018 Crop Production

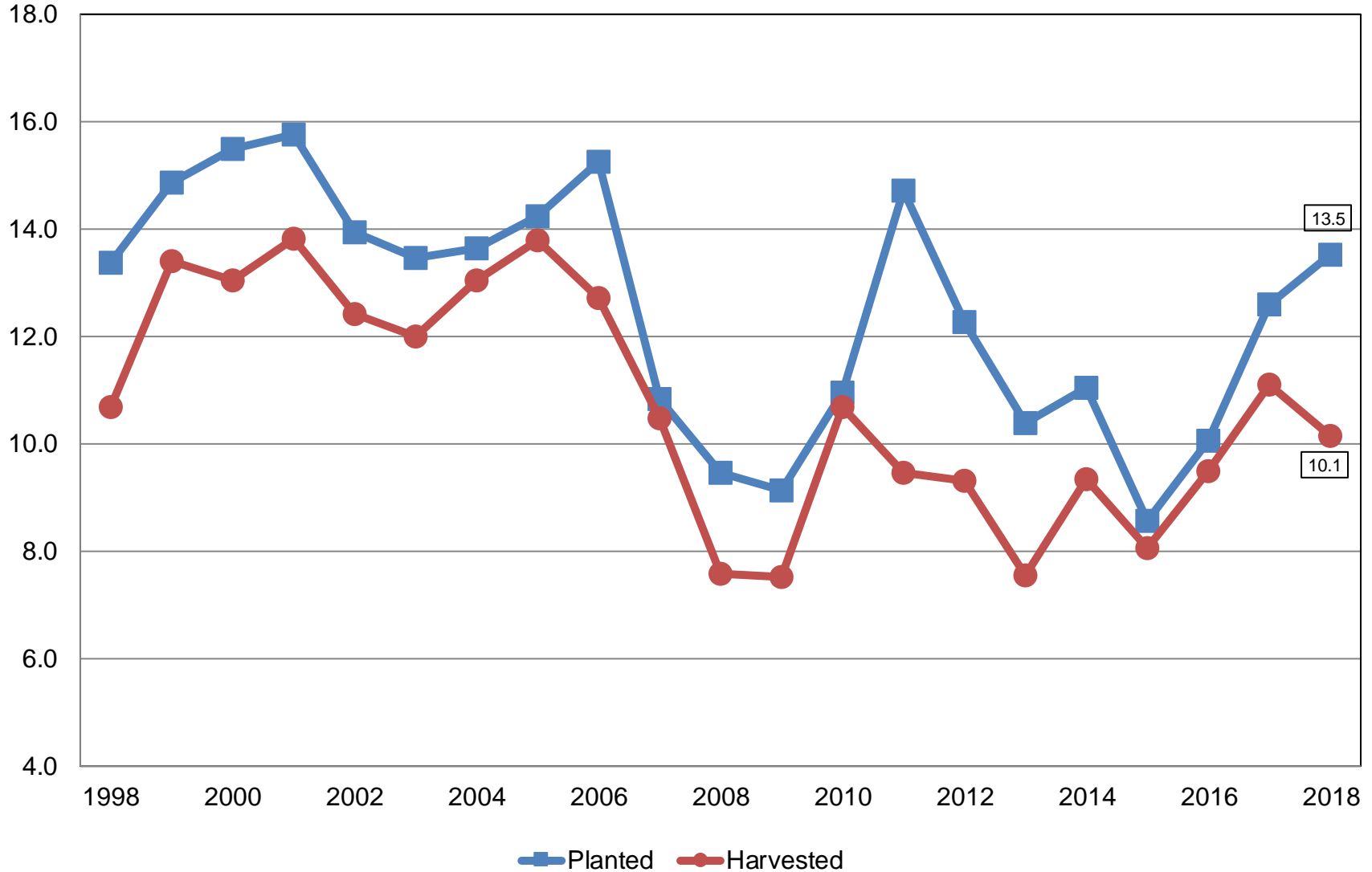
Crop	Unit	August 2018	% Change From Previous Forecast	% Change From Previous Season
All Cotton				
Planted	Mil Ac	13.5	NC	+7.2
Harvested	Mil Ac	10.1	NA	-8.7
Yield	Lb/Ac	911	NA	+0.7
Production	Mil Bls	19.2	NA	-8.1





# All Cotton Acres United States

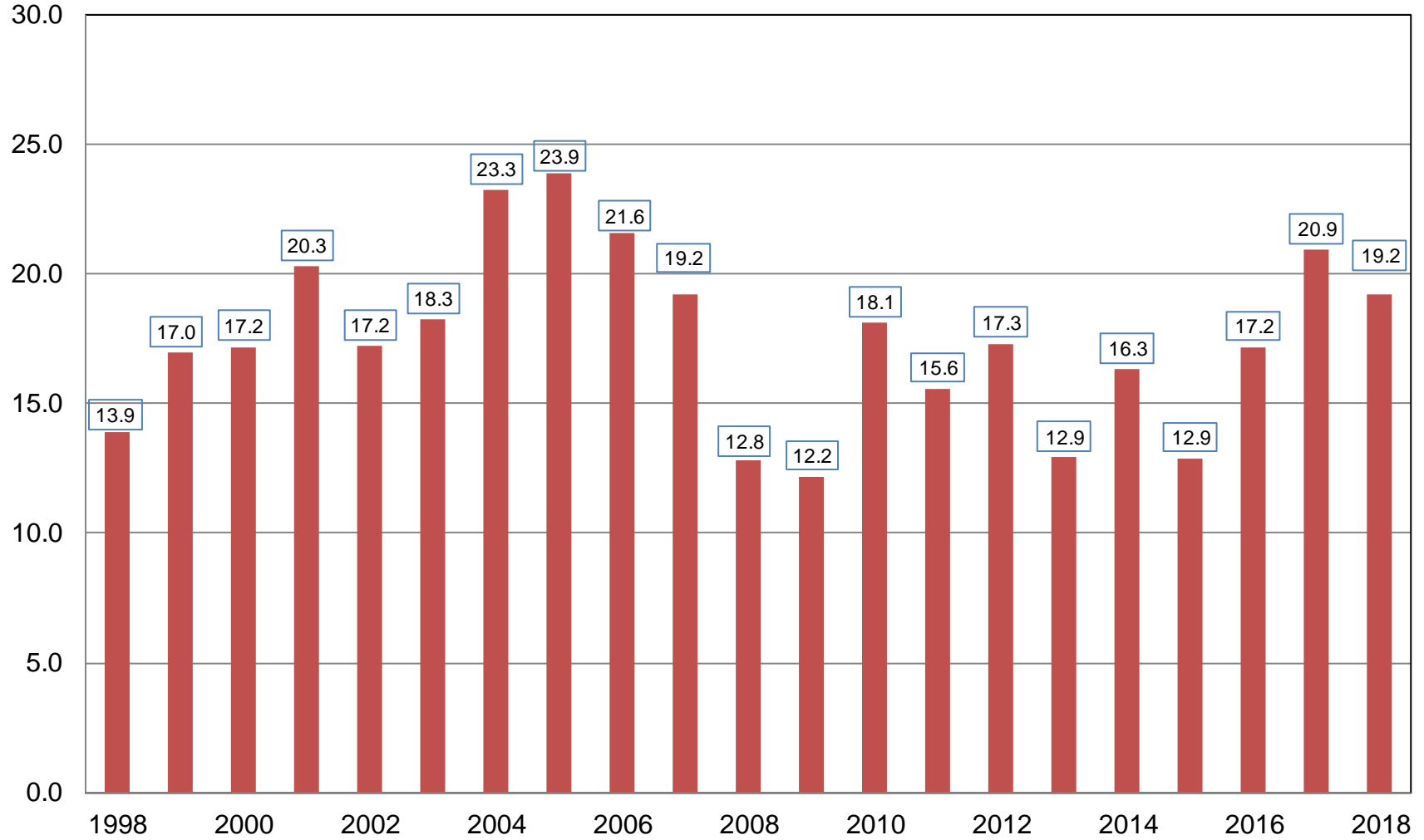
Million Acres





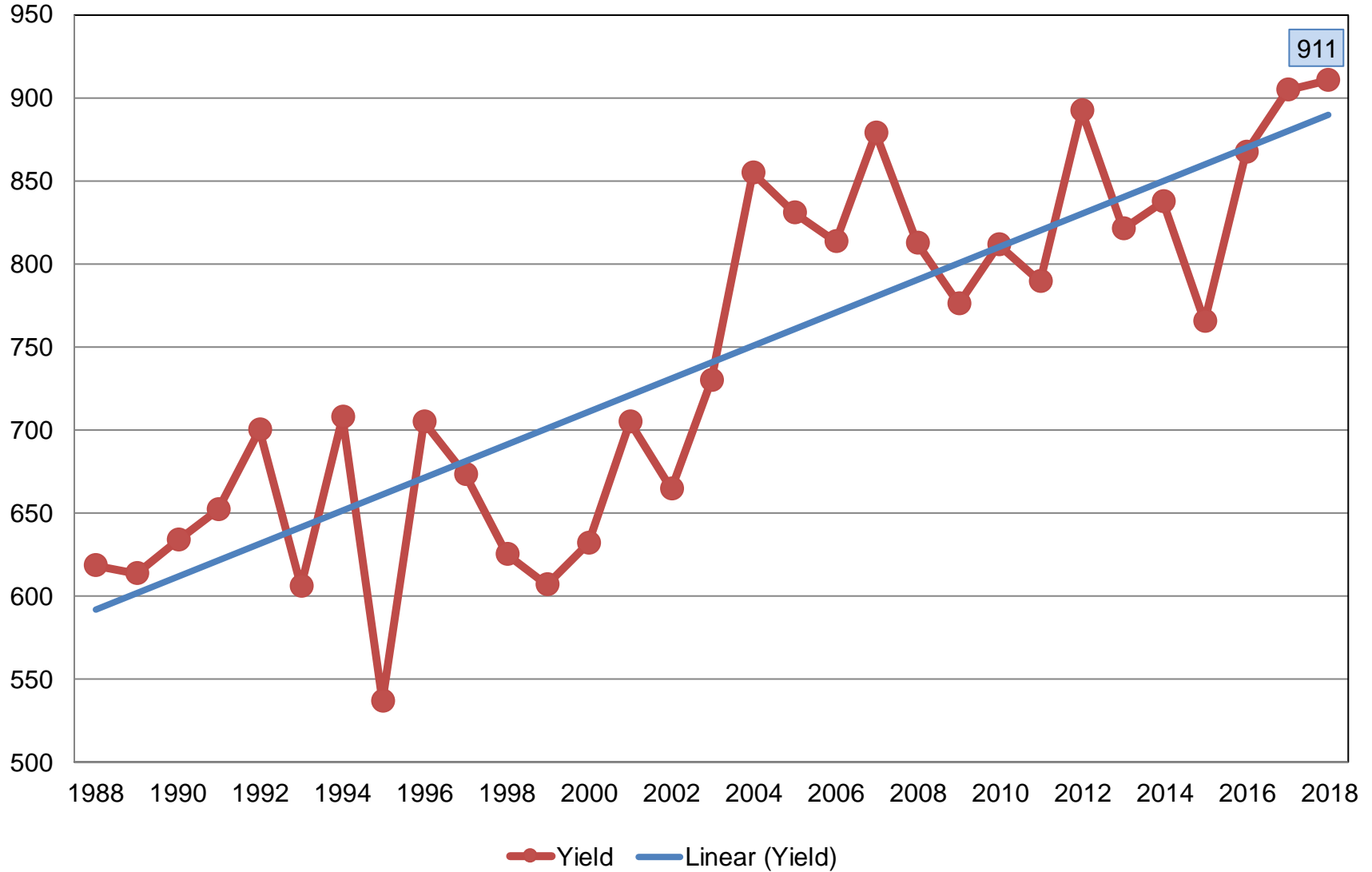
# All Cotton Production United States

Million Bales



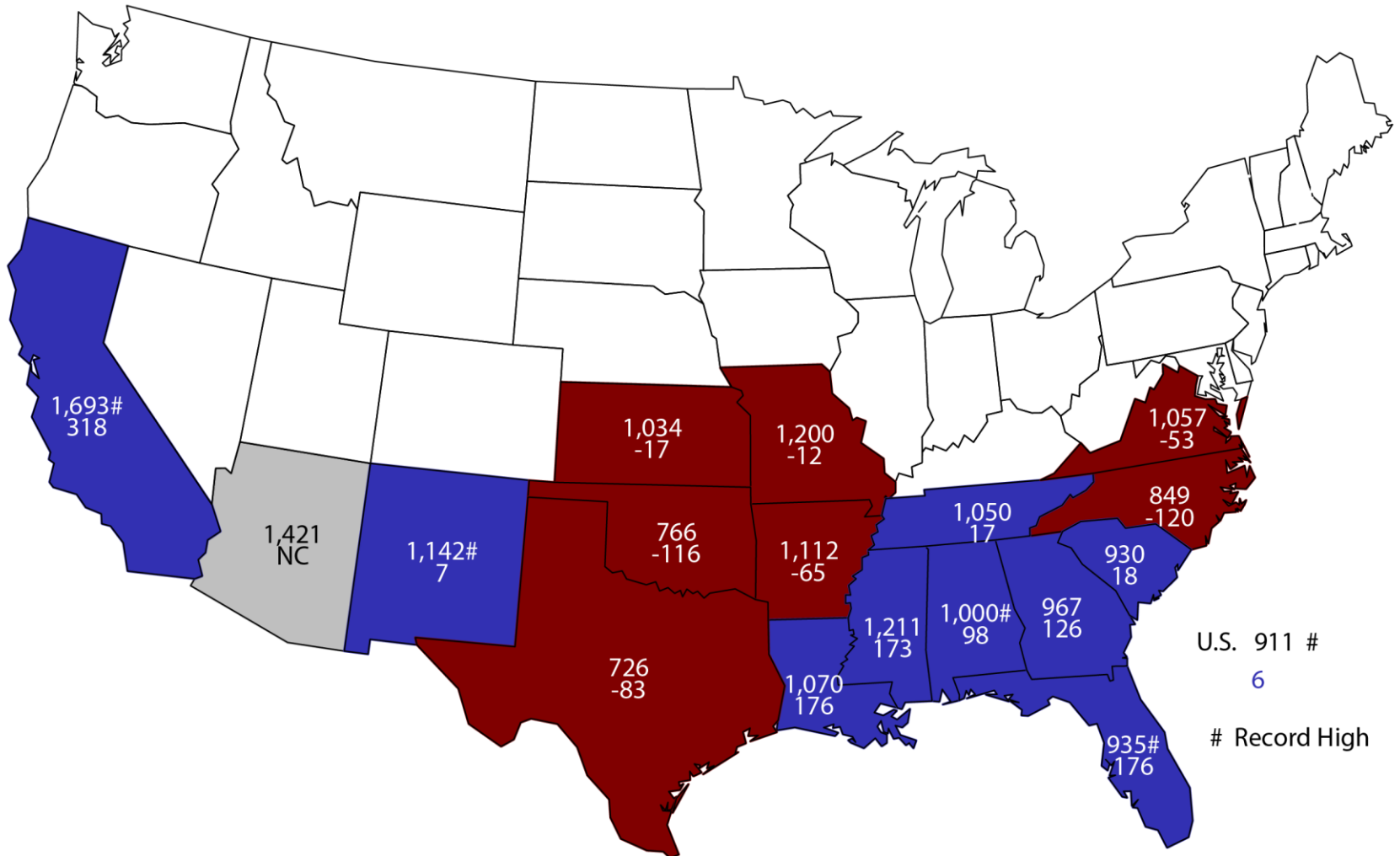
# All Cotton Yield United States

Pounds per Acre



# August 1, 2018 All Cotton Yield

## Pounds and Change From Previous Year



U.S. 911 #  
6  
# Record High

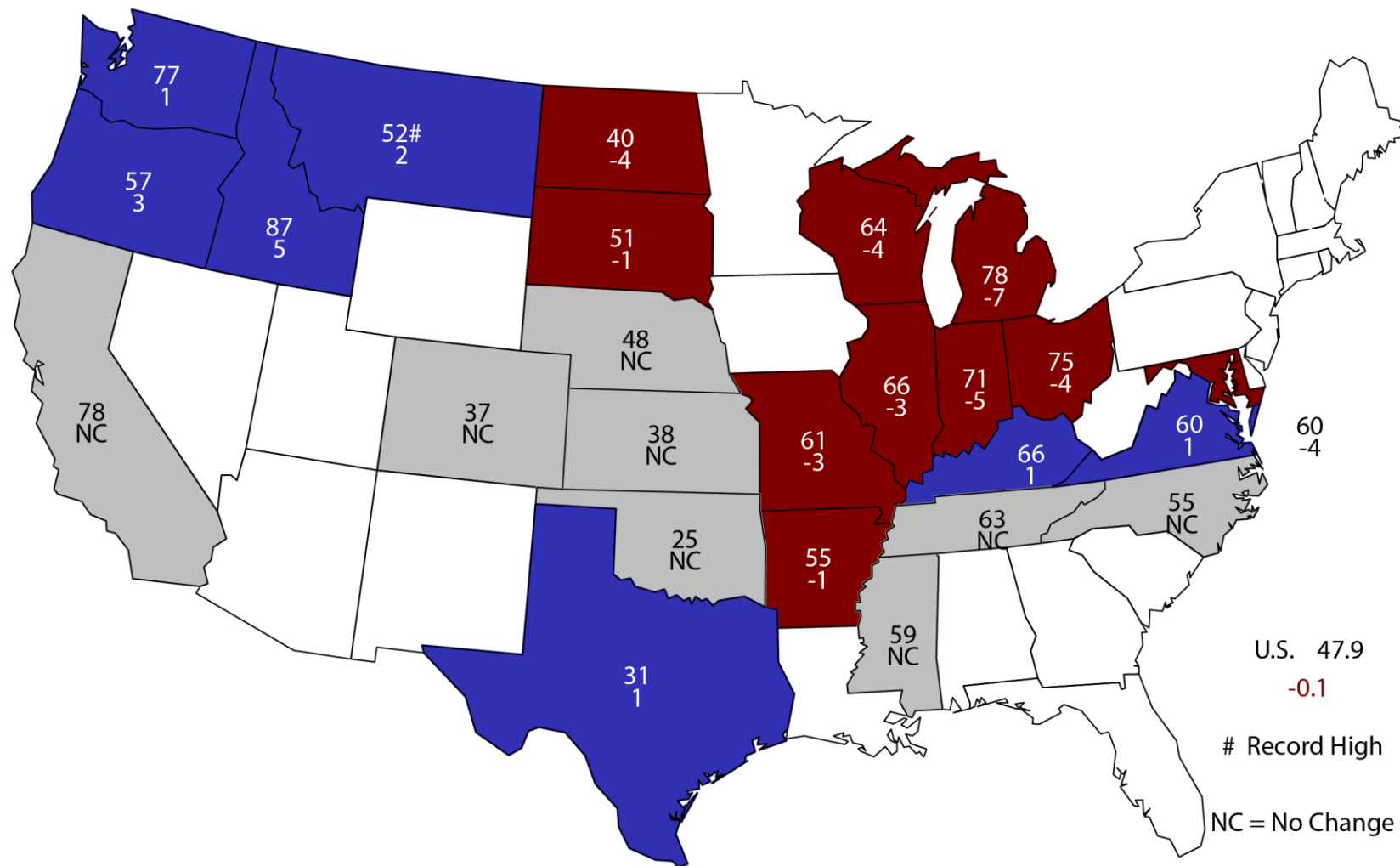


# August 2018 Crop Production

Crop	Unit	August 2018	% Change From Previous Forecast	% Change From Previous Season
Winter Wheat				
Harvested	Mil Ac	24.8	-0.1	-1.9
Yield	Bu/Ac	47.9	-0.2	-4.6
Production	Bil Bu	1.19	-0.3	-6.3
Other Spring Wheat				
Harvested	Mil Ac	12.9	NC	+27.0
Yield	Bu/Ac	47.6	NC	+16.1
Production	Mil Bu	614	+<0.1	+47.5
Durum Wheat				
Harvested	Mil Ac	1.84	NC	-13.8
Yield	Bu/Ac	39.9	-2.0	+55.3
Production	Mil Bu	73.4	-1.9	+33.7
All Wheat				
Production	Bil Bu	1.88	-0.2	+7.8

# August 1, 2018 Winter Wheat Yield

## Bushels and Change From Previous Estimate



U.S. 47.9  
-0.1

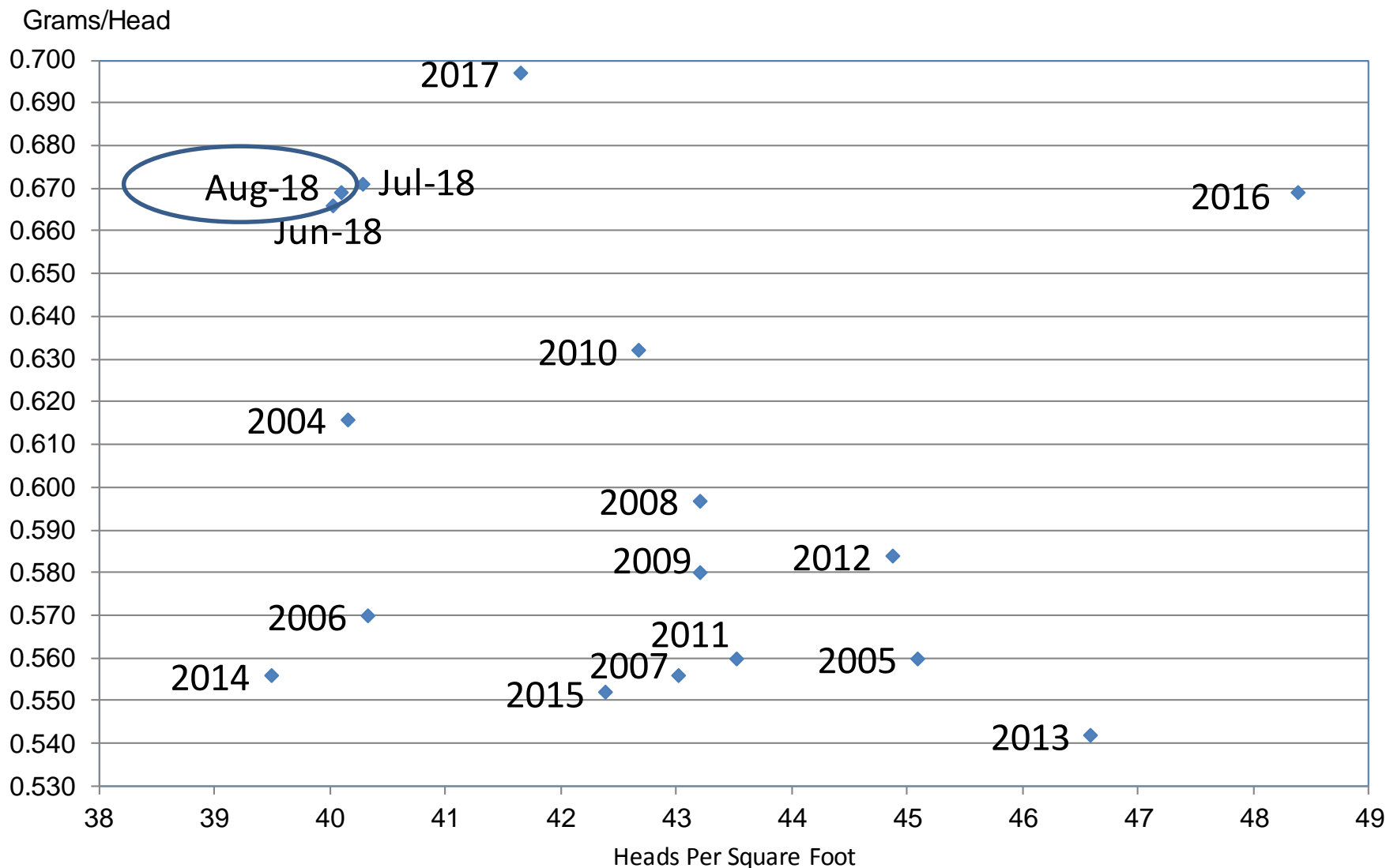
# Record High

NC = No Change



# Wheat Objective Yield Region

## Heads Per Square Foot vs. Implied Head Weight

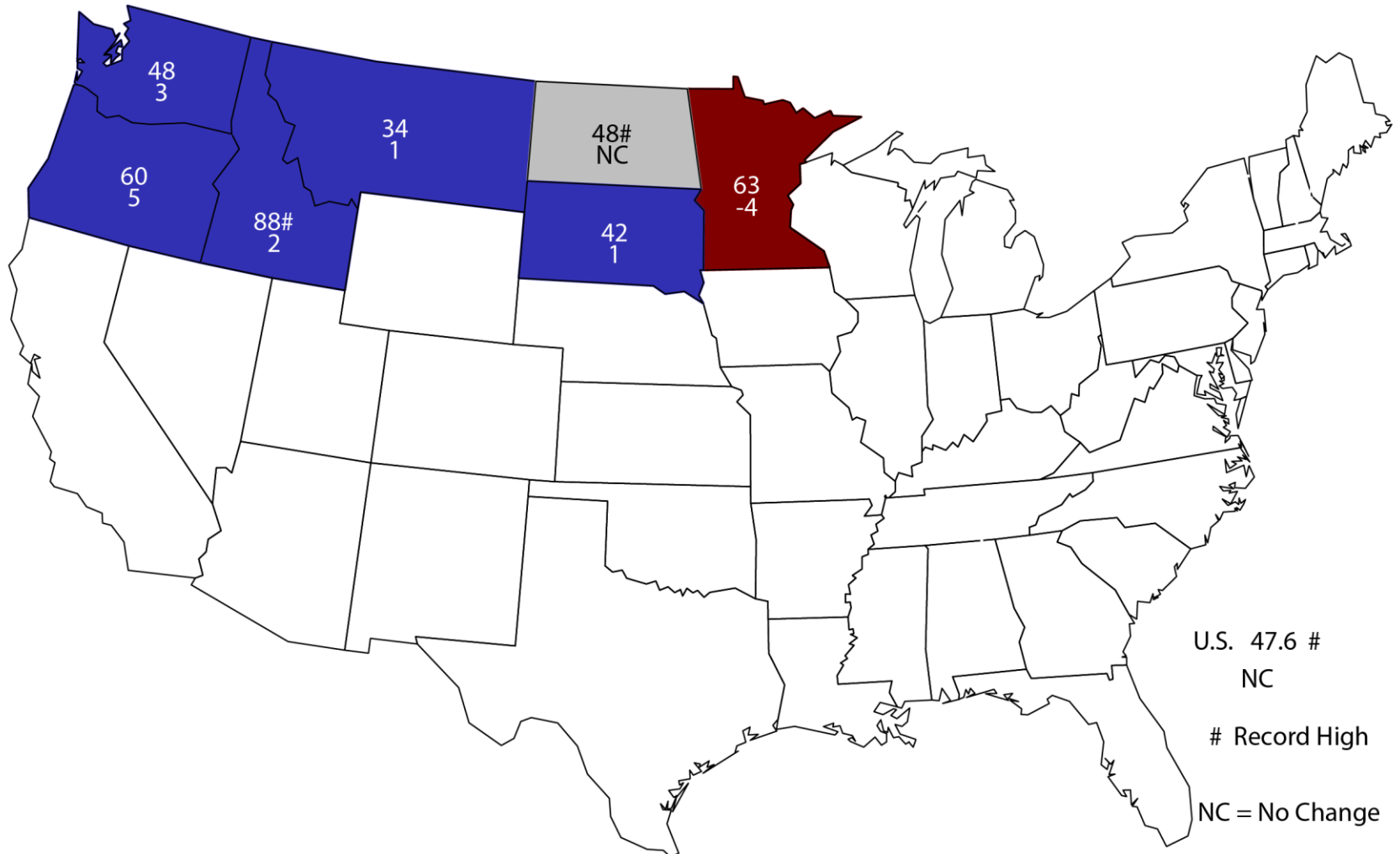


Implied Head Weight = Published Yield / (Heads\*1.6006)



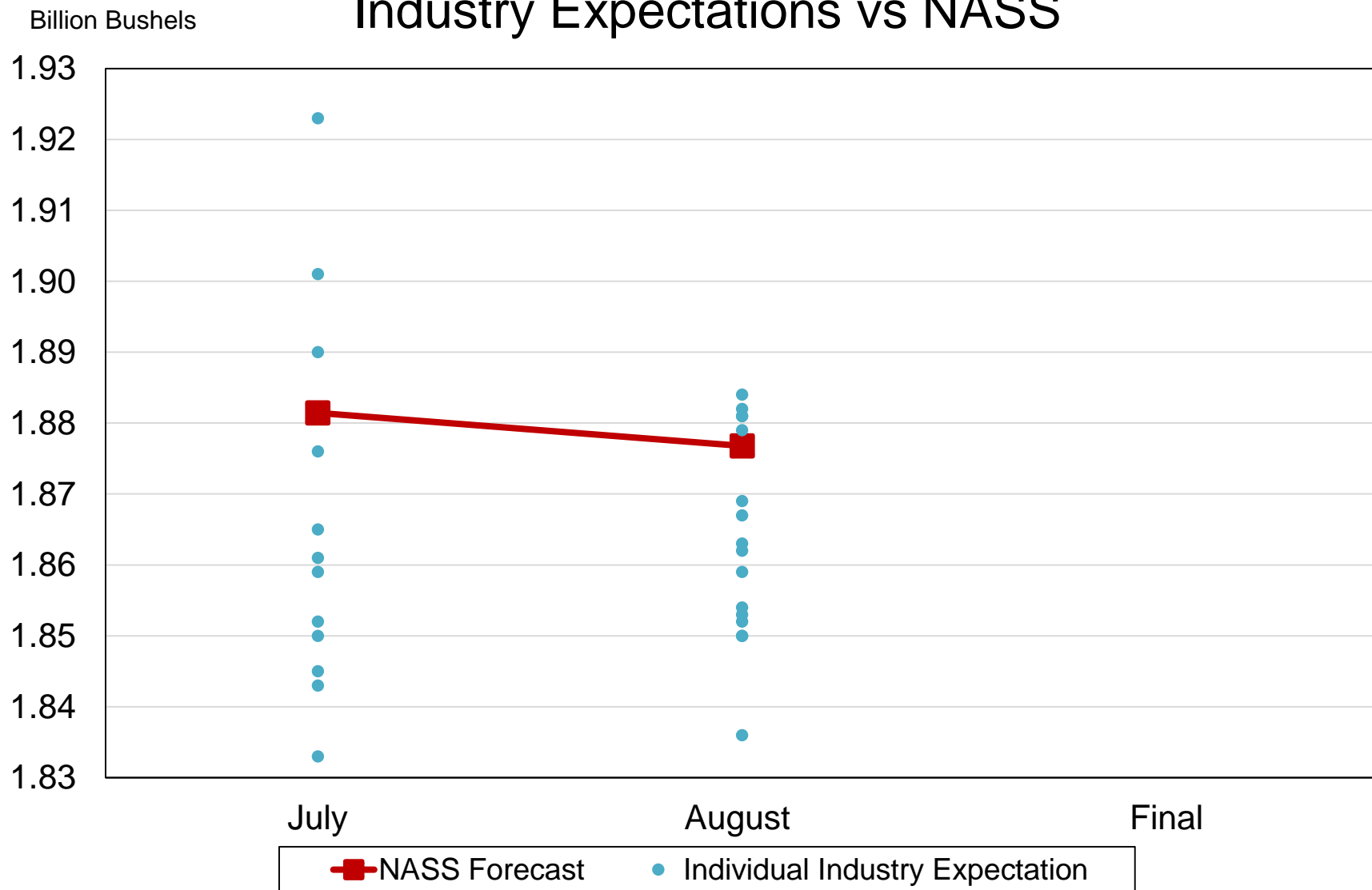
# August 1, 2018 Other Spring Wheat Yield

## Bushels and Change From Previous Estimate





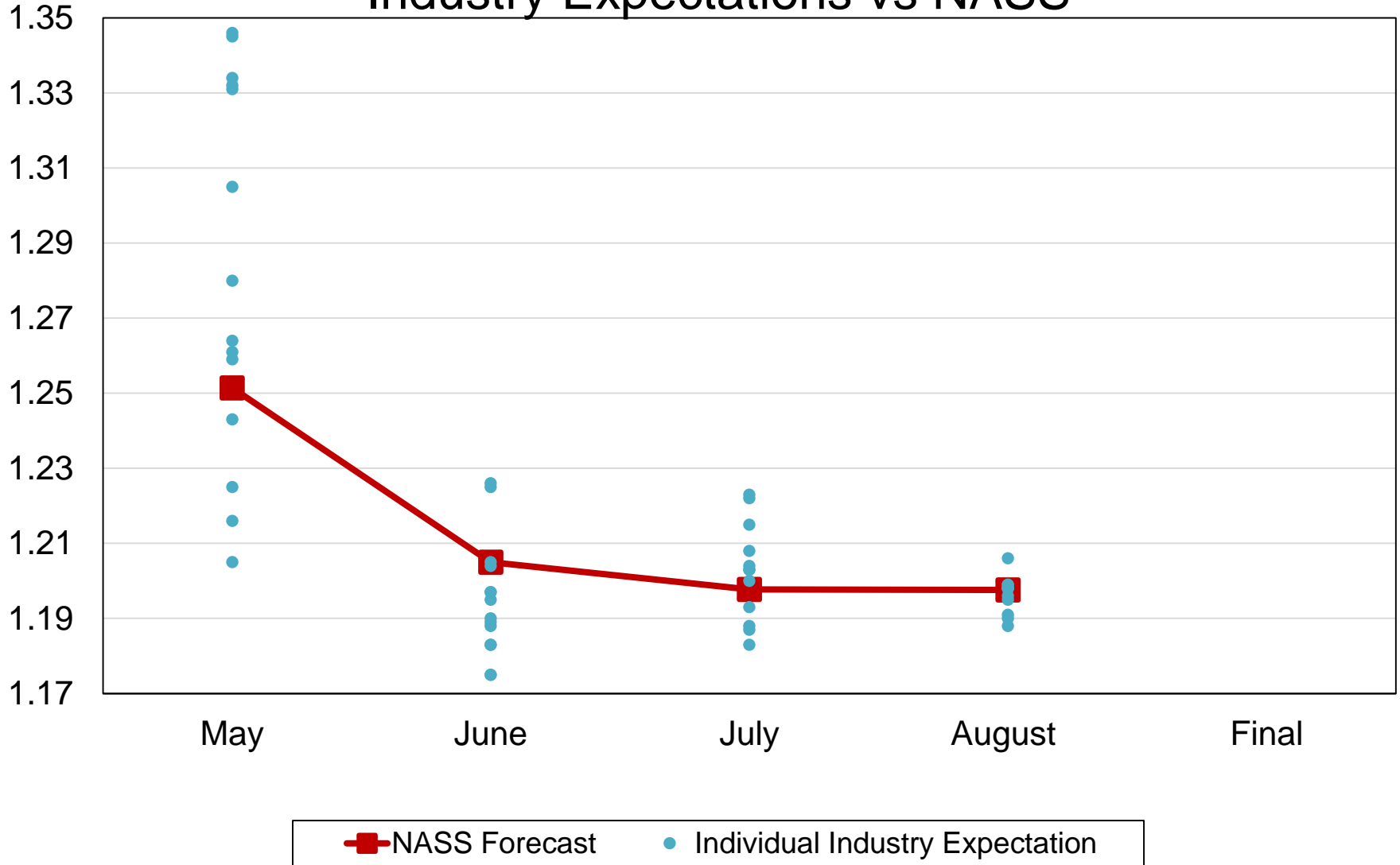
# 2018 United States All Wheat Production Industry Expectations vs NASS





# 2018 United States Winter Wheat Production Industry Expectations vs NASS

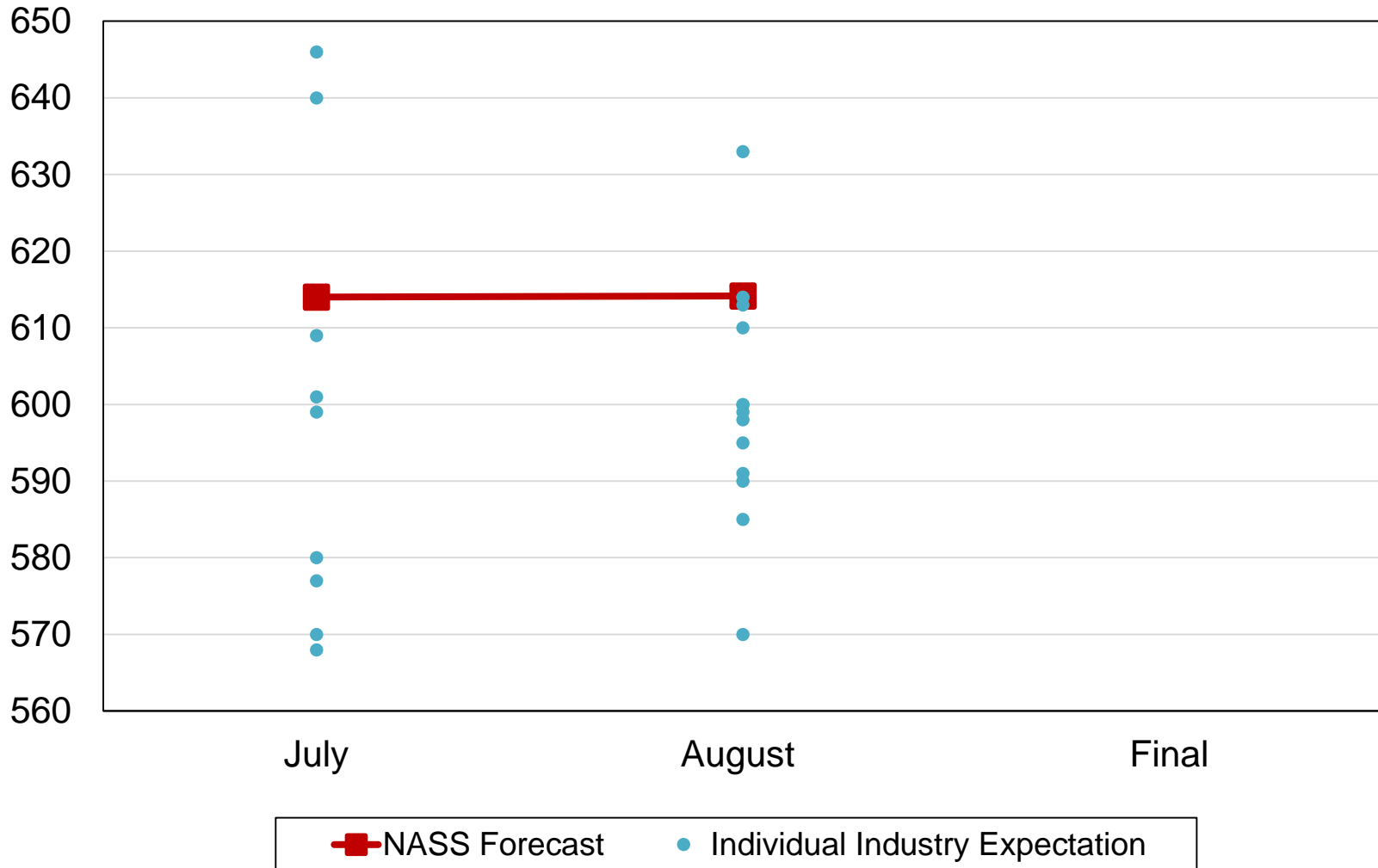
Billion Bushels





# 2018 United States Other Spring Wheat Production Industry Expectations vs NASS

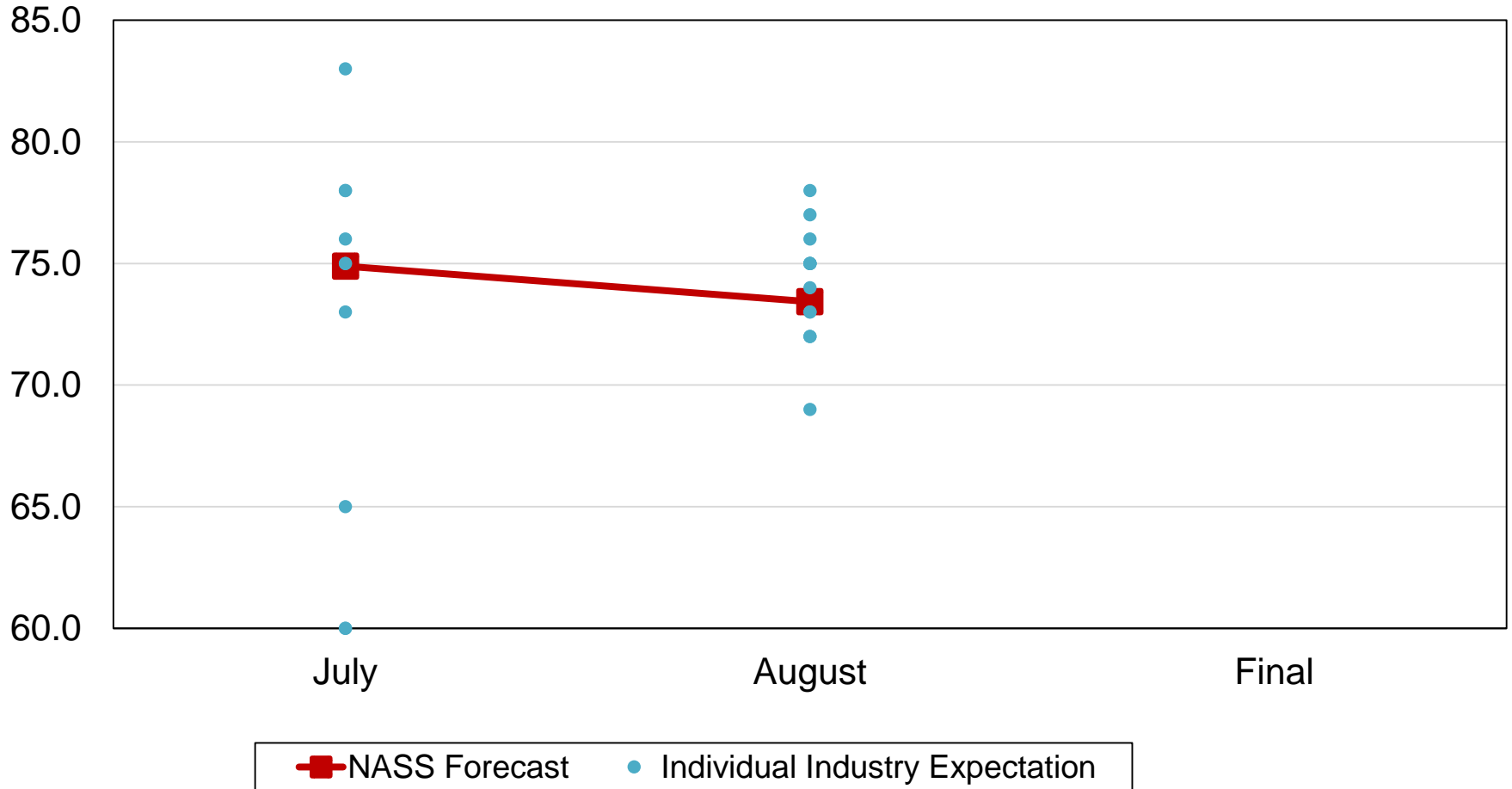
Million Bushels





# 2018 United States Durum Wheat Production Industry Expectations vs NASS

Million Bushels





# August 2018 Crop Production

Crop	Unit	August 2018	% Change From Previous Forecast	% Change From Previous Season
Oats	Mil Bu	65.7	-1.1	+33.0
Barley	Mil Bu	156	+1.0	+10.0
Sorghum	Mil Bu	375	NA	+3.2
Alfalfa Hay	Mil Tons	57.8	NA	+4.9
Other Hay	Mil Tons	70.7	NA	-7.4
Rice	Mil Cwt	211	NA	+18.3
Peanuts	Bil Lbs	6.09	NA	-15.8



# August 2018 Crop Production

Crop	Unit	August 2018	% Change From Previous Forecast	% Change From Previous Season
All Tobacco	Mil Lbs	647	NA	-8.9
Dry Beans	Mil Cwt	35.9	NA	+0.3
Sugarbeets	Mil Tons	35.3	NA	-0.2
Sugarcane	Mil Tons	32.6	NA	-2.0
Summer Potatoes	Mil Cwt	19.8	NA	-8.9



# August 2018 Crop Production

Crop	Unit	August 2018	% Change From Previous Forecast	% Change From Previous Season
Peaches	Thou Tons	732	NA	+5.1
Apples	Bil Lbs	11.5	NA	+0.4
Pears	Thou Tons	739	NA	+0.2
Grapes	Mil Tons	7.66	NA	+4.0
Hops	Mil Lbs	106	NA	+1.3
Cranberries	Mil Bbls	8.63	NA	+3.1



# Upcoming Reports

Release Date	Report Title
August 24	Cattle on Feed Rice Stocks
August 28	Citrus Fruits
August 29	Agricultural Prices
September 4	CAIR: Cotton, Fats & Oils, and Grain Crushings
September 12	Cotton Ginnings Crop Production





Join @USDA\_NASS  
using #StatChat for our  
monthly Twitter chat  
following the August 10  
*Crop Production* report.

Ask Lance Honig,  
NASS Crop Branch  
Chief, about the  
U.S. crop statistics.

# STAT CHAT SERIES

**#STATCHAT**



**FRIDAY, AUGUST 10 @ 1PM ET**

Tweet questions  
**@usda\_nass**  
in advance or live.

USDA-NASS  
8-10-18



United States Department of Agriculture  
**National Agricultural Statistics Service**

---

---

**All Reports Available At**  
[www.nass.usda.gov](http://www.nass.usda.gov)

**For Questions**  
202-720-2127  
800-727-9540  
[nass@nass.usda.gov](mailto:nass@nass.usda.gov)