



United States Department of Agriculture
National Agricultural Statistics Service

June Crop Production
Executive Summary

Lance Honig, Chief
Crops Branch



Contents

Field Crops	Fruit & Nuts	Specialty Crops
Winter Wheat	Citrus	Maple Syrup
	Prunes	
	Sweet Cherries	
	Tart Cherries	



Survey Overview

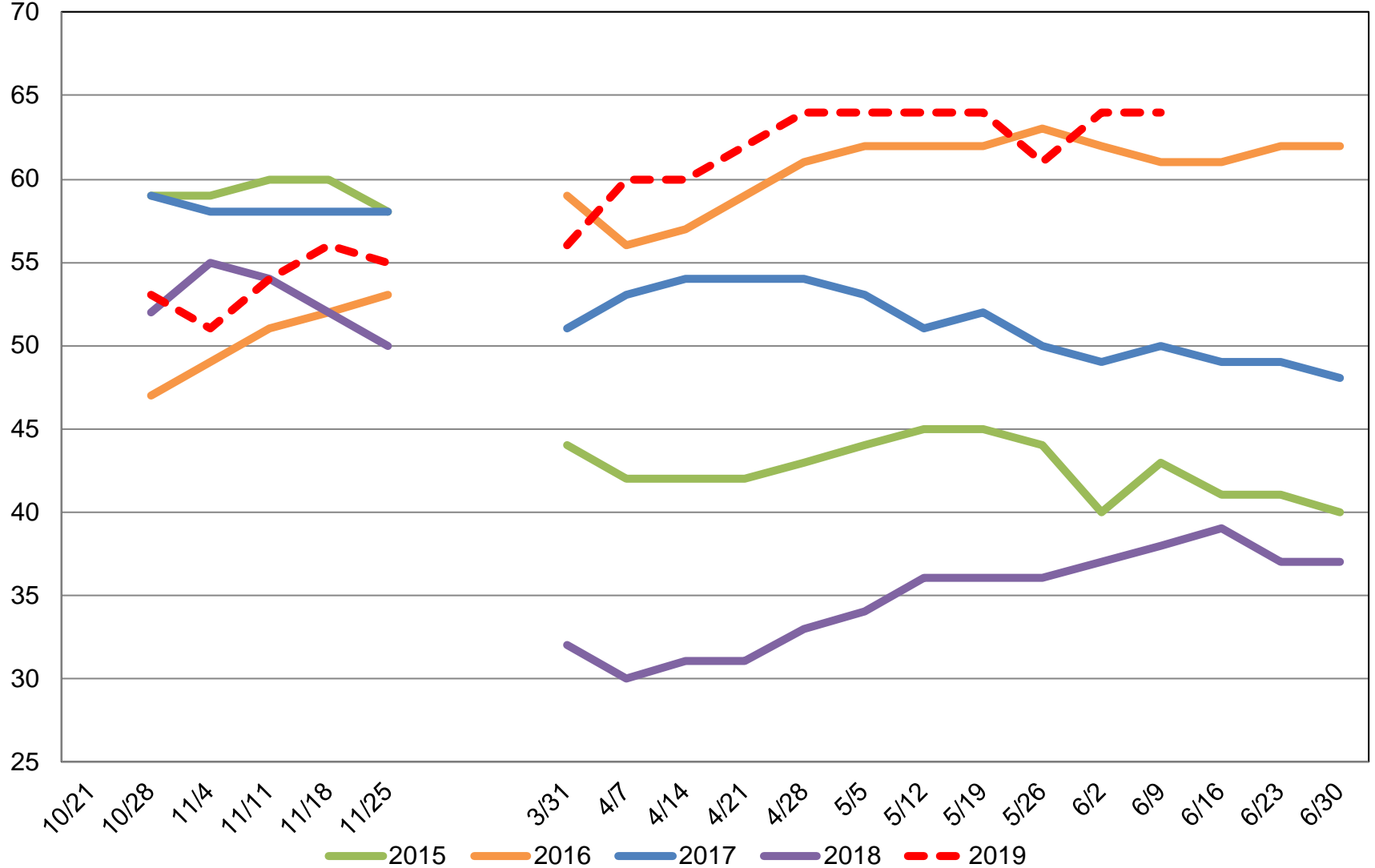
	Ag Yield	Objective Yield
Survey Type	Farmer Reported	Field Measurement
Crops Included	Winter and Durum Wheat	Winter Wheat
States	26	10
Sample Size	3,430	825
Collection Period	May 30 - June 6	May 25 - June 1



U.S. Winter Wheat Condition

Percent Rated Good to Excellent

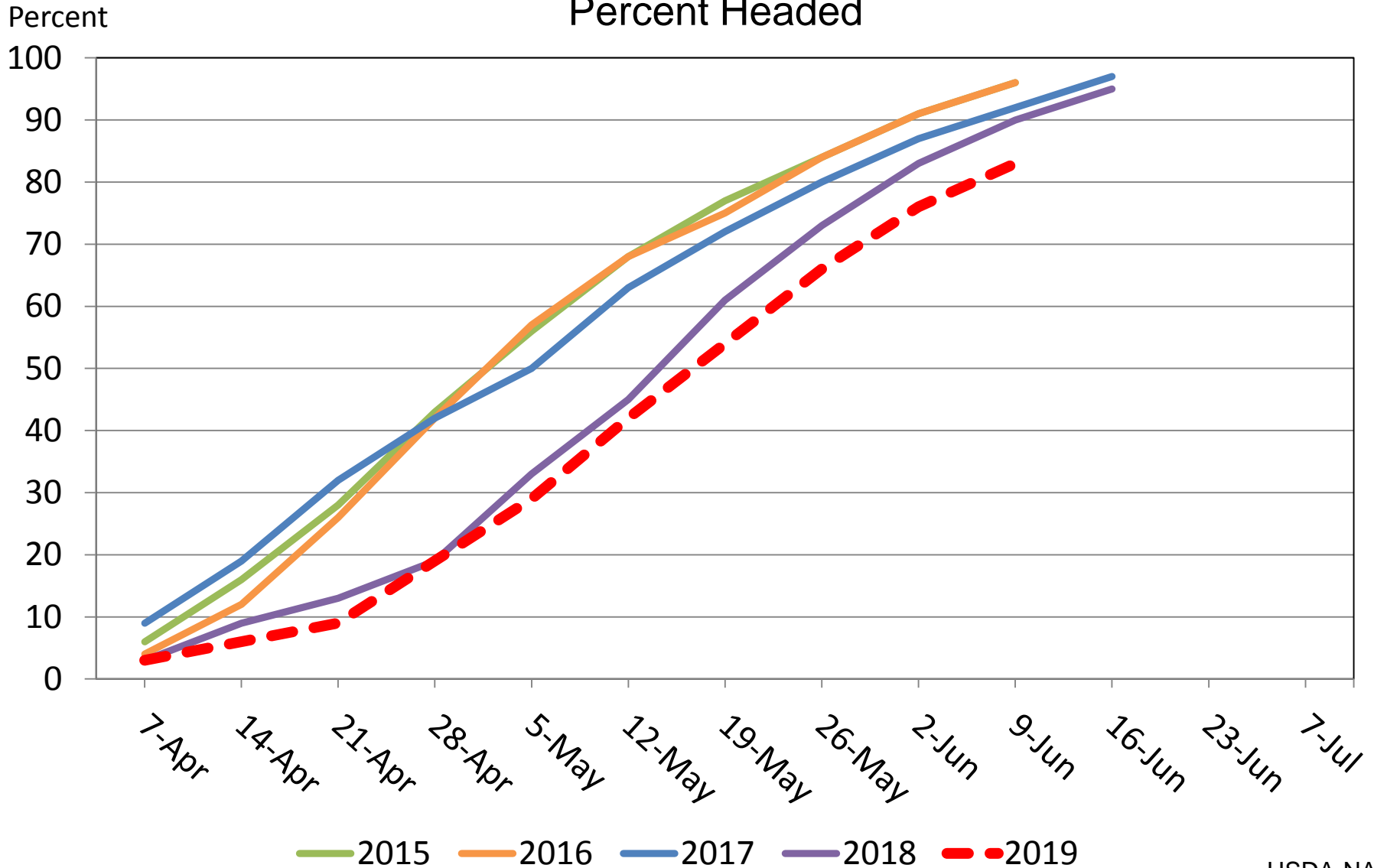
Percent





U.S. Winter Wheat Progress

Percent Headed





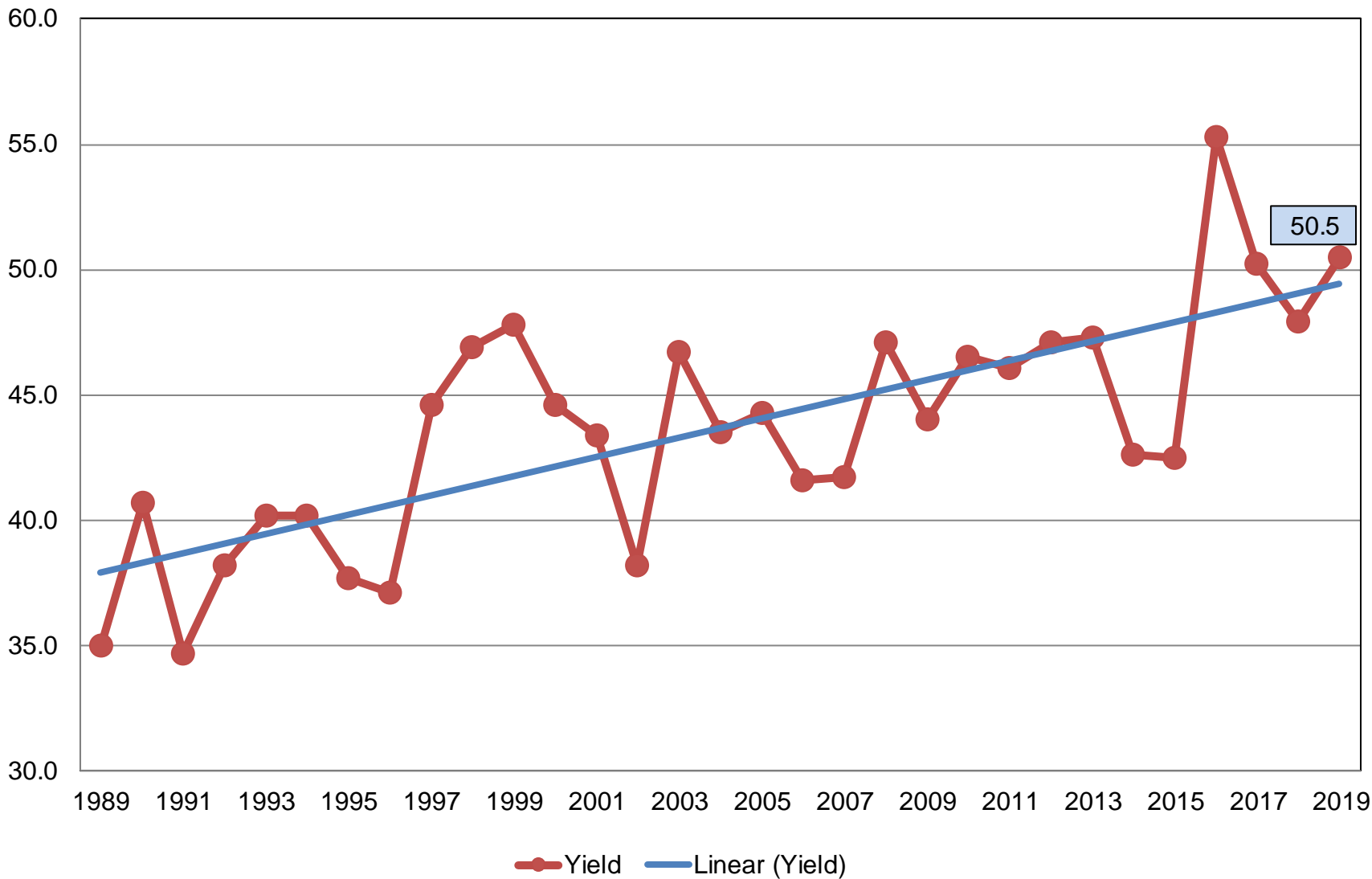
June 2019 Crop Production

Crop	Unit	June 2019	% Change From Previous Forecast	% Change From Previous Season
Wheat, Winter				
Harvested	Mil Ac	25.2	NC	+1.9
Yield	Bu/Ac	50.5	+0.4	+5.4
Production	Bil Bu	1.27	+0.5	+7.6
Production by Class				
Hard Red	Mil Bu	794	+1.8	+20.0
Soft Red	Mil Bu	258	-2.4	-9.5
White	Mil Bu	222	-0.8	-6.1



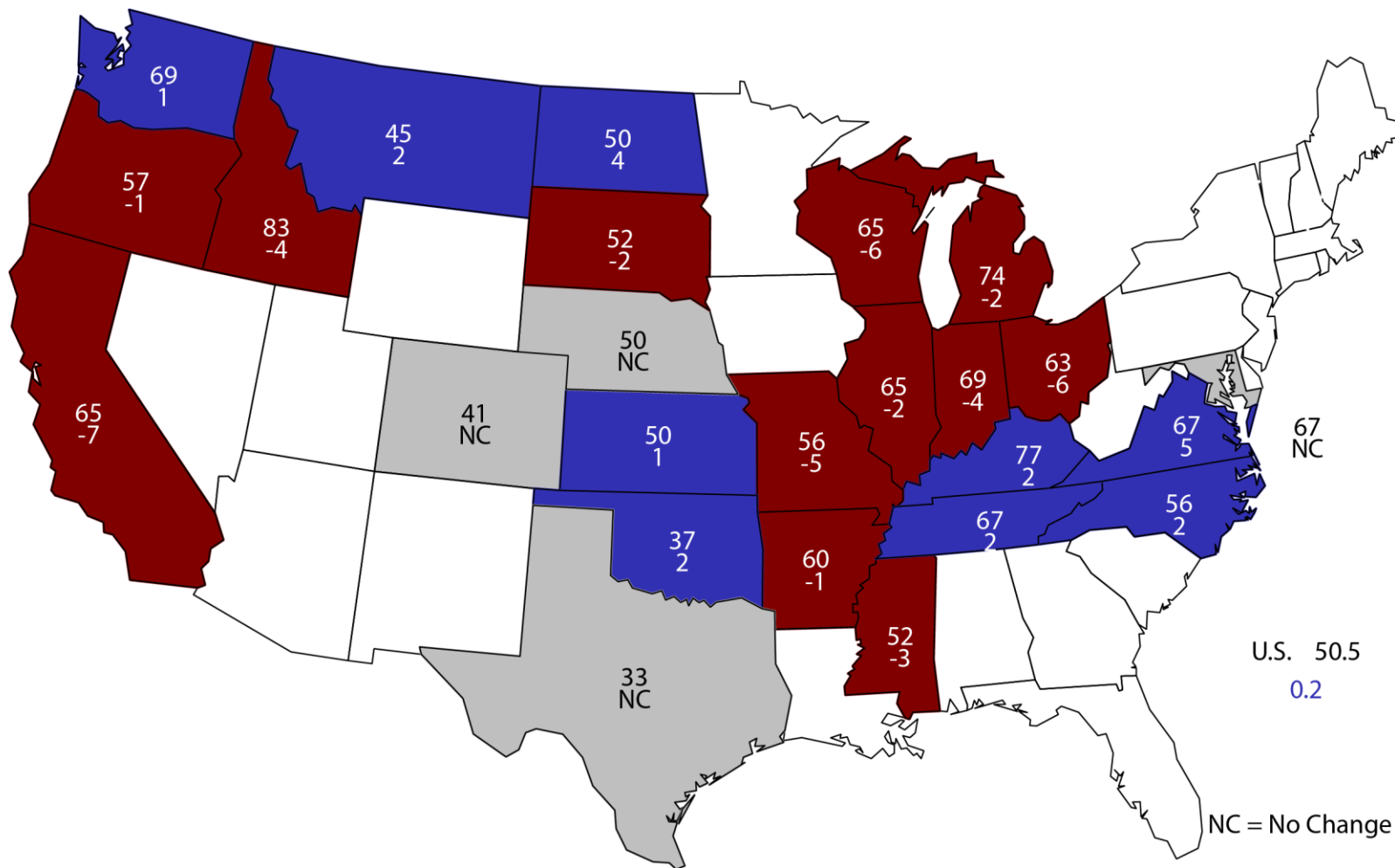
Winter Wheat Yield United States

Bushels per Acre



June 1, 2019 Winter Wheat Yield

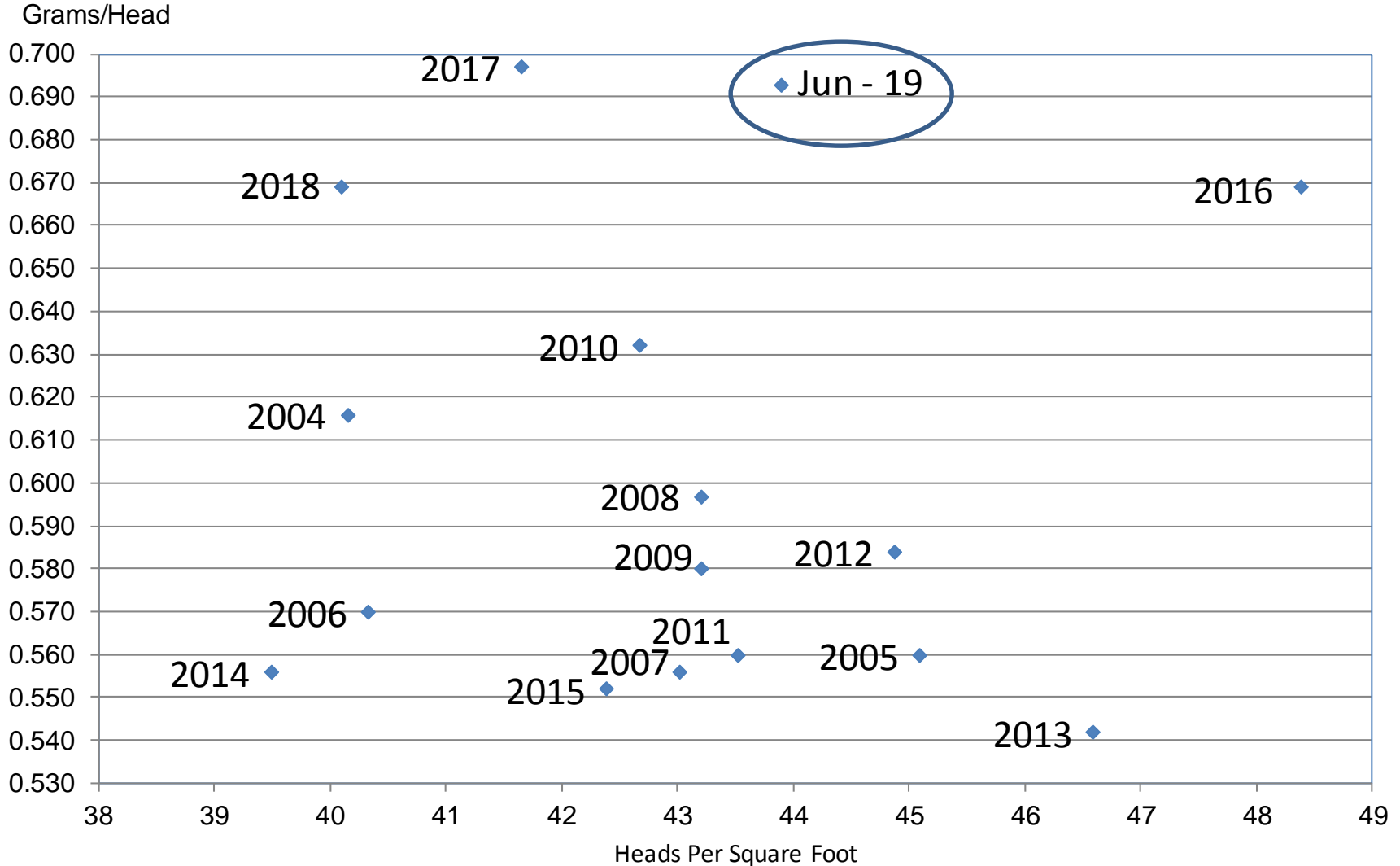
Bushels and Change From Previous Estimate





Wheat Objective Yield Region

Heads Per Square Foot vs. Implied Head Weight

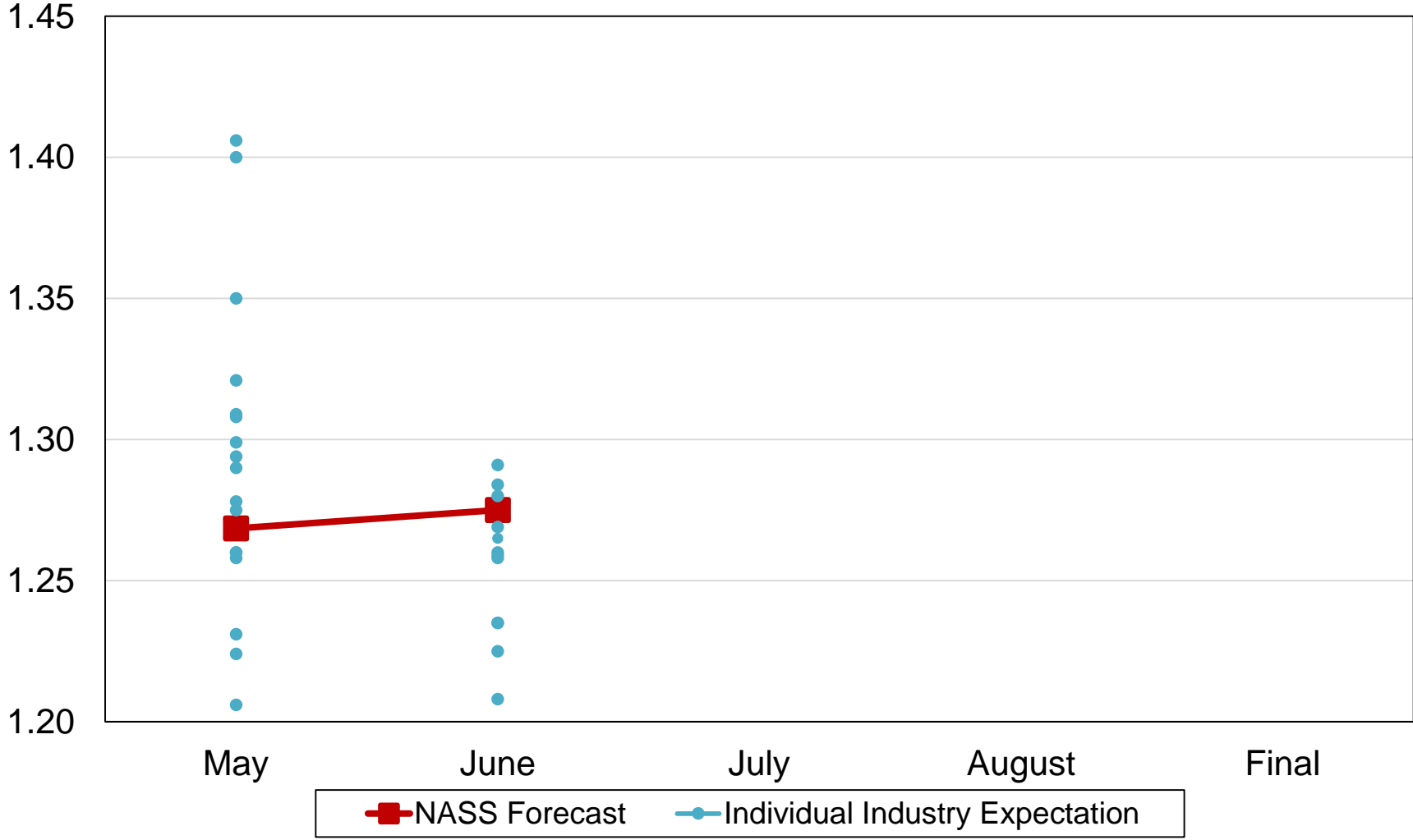


Implied Head Weight = Published Yield / (Heads*1.6006)



2019 United States Winter Wheat Production Industry Expectations vs NASS

Billion Bushels





June 2019 Crop Production

Crop	Unit	June 2019	% Change From Previous Forecast	% Change From Previous Season
Production				
Oranges	Mil Tons	5.25	-0.8	+33.8
Grapefruit	Thou Tons	604	-0.5	+16.8
Tangerines & Mandarins	Thou Tons	927	-0.1	+15.3



June 2019 Crop Production

Crop	Unit	June 2019	% Change From Previous Forecast	% Change From Previous Season
Production				
Maple Syrup	Mil Gal	4.24	NA	+1.0
Prunes, dried	Thou Tons	110	NA	+37.5
Sweet Cherries	Thou Tons	362	NA	+13.2
Tart Cherries	Mil Lbs	290	NA	-17.7



Upcoming Reports

Release Date	Report Title
June 13	Potato Stocks
June 18	Noncitrus Fruits and Nuts – Ann.
June 21	Cattle on Feed
June 27	Agricultural Prices Hogs and Pigs
June 28	Acreage Grain Stocks Rice Stocks
July 1	CAIR: Cotton System, Fats & Oils, and Grain Crushings
July 11	Crop Production

STAT CHAT SERIES

You can tweet questions in advance to [@usda_nass](https://twitter.com/usda_nass).

#STATCHAT

Join [@usda_nass](https://twitter.com/usda_nass) on Twitter using [#StatChat](https://twitter.com/hashtag/StatChat) on Tuesday, June 11 at 1 p.m. ET to discuss the *Crop Production* report with Lance Honig.

**TUESDAY,
JUNE 11
1PM ET**





United States Department of Agriculture
National Agricultural Statistics Service

All Reports Available At
www.nass.usda.gov

For Questions
202-720-2127
800-727-9540
nass@usda.gov