



United States Department of Agriculture  
**National Agricultural Statistics Service**

---

---

**November Crop Production**  
Executive Summary

Lance Honig, Chief  
Crops Branch



# Contents

| Field Crops | Specialty Crops |
|-------------|-----------------|
| Corn        | Sugarbeets      |
| Soybeans    | Sugarcane       |
| Cotton      | Potatoes        |
| Rice        |                 |
| Peanuts     |                 |
| Sorghum     |                 |
| Cottonseed  |                 |
| Wheat       |                 |
| Oats        |                 |
| Barley      |                 |



# Survey Overview

|                   | <b>Ag Yield</b> | <b>Objective Yield</b> |
|-------------------|-----------------|------------------------|
| Survey Type       | Farmer Reported | Field Measurement      |
| Crops Included    | Field Crops     | Corn, Cotton, Soybeans |
| Sample Size       | 8,346           | 2,905                  |
| Collection Period | Oct 30 – Nov 5  | Oct 25 – Nov 1         |



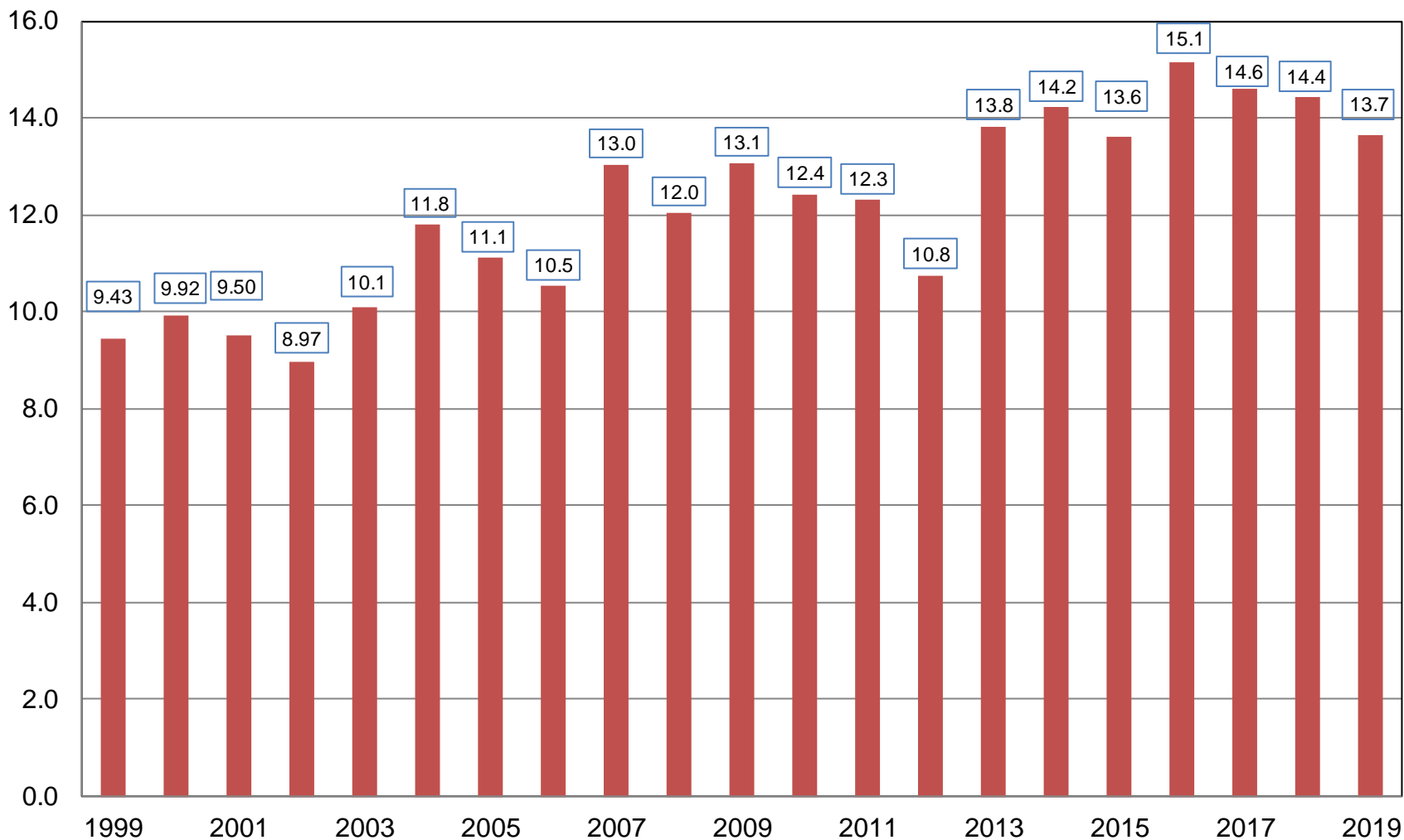
# November 2019 Crop Production

| Crop       | Unit   | November 2019 | % Change From Previous Forecast | % Change From Previous Season |
|------------|--------|---------------|---------------------------------|-------------------------------|
| Corn       |        |               |                                 |                               |
| Harvested  | Mil Ac | 81.8          | NC                              | +0.1                          |
| Yield      | Bu/Ac  | 167.0         | -0.8                            | -5.3                          |
| Production | Bil Bu | 13.7          | -0.9                            | -5.3                          |



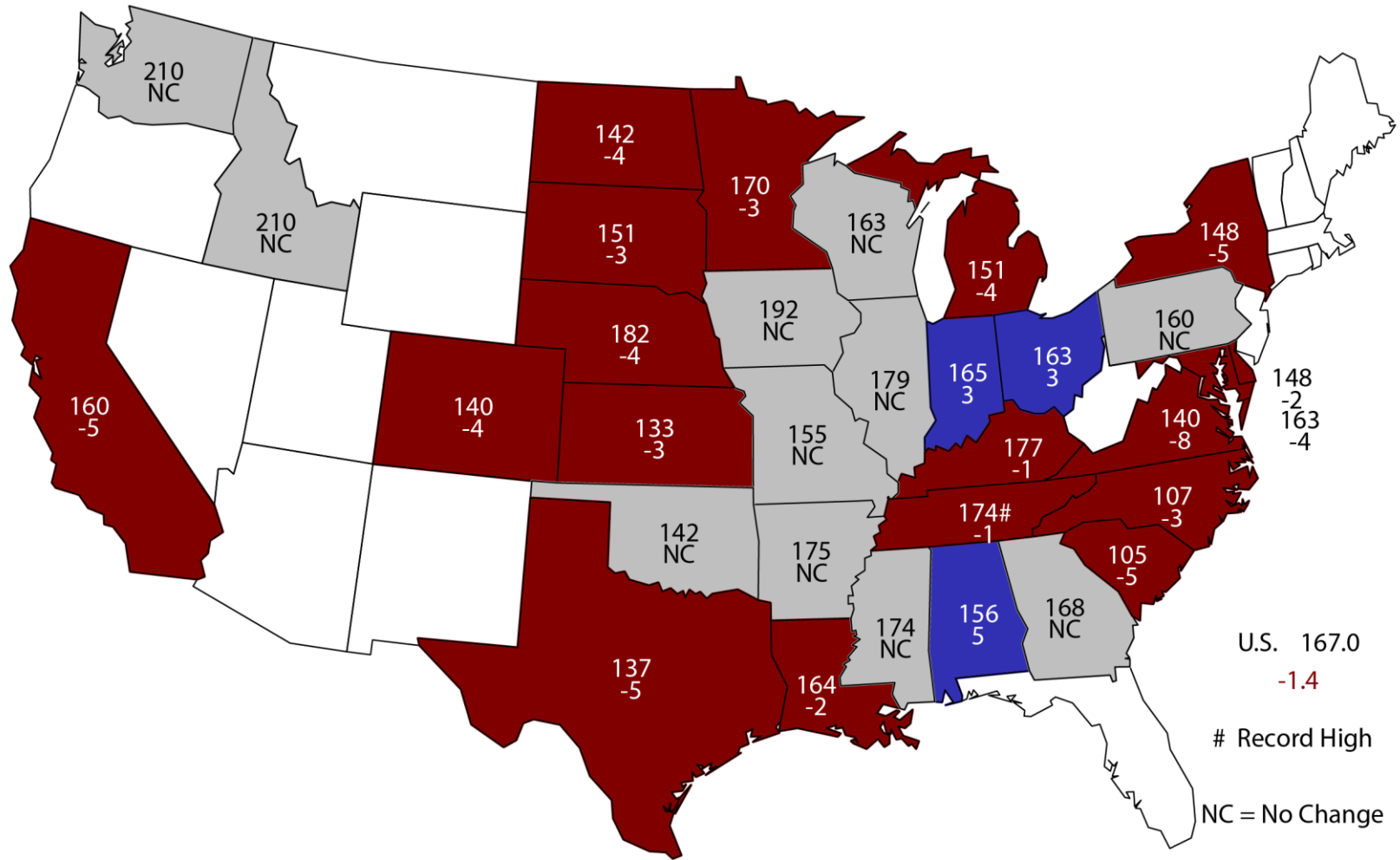
# Corn for Grain Production United States

Billion Bushels



# November 1, 2019 Corn Yield

## Bushels and Change From Previous Forecast



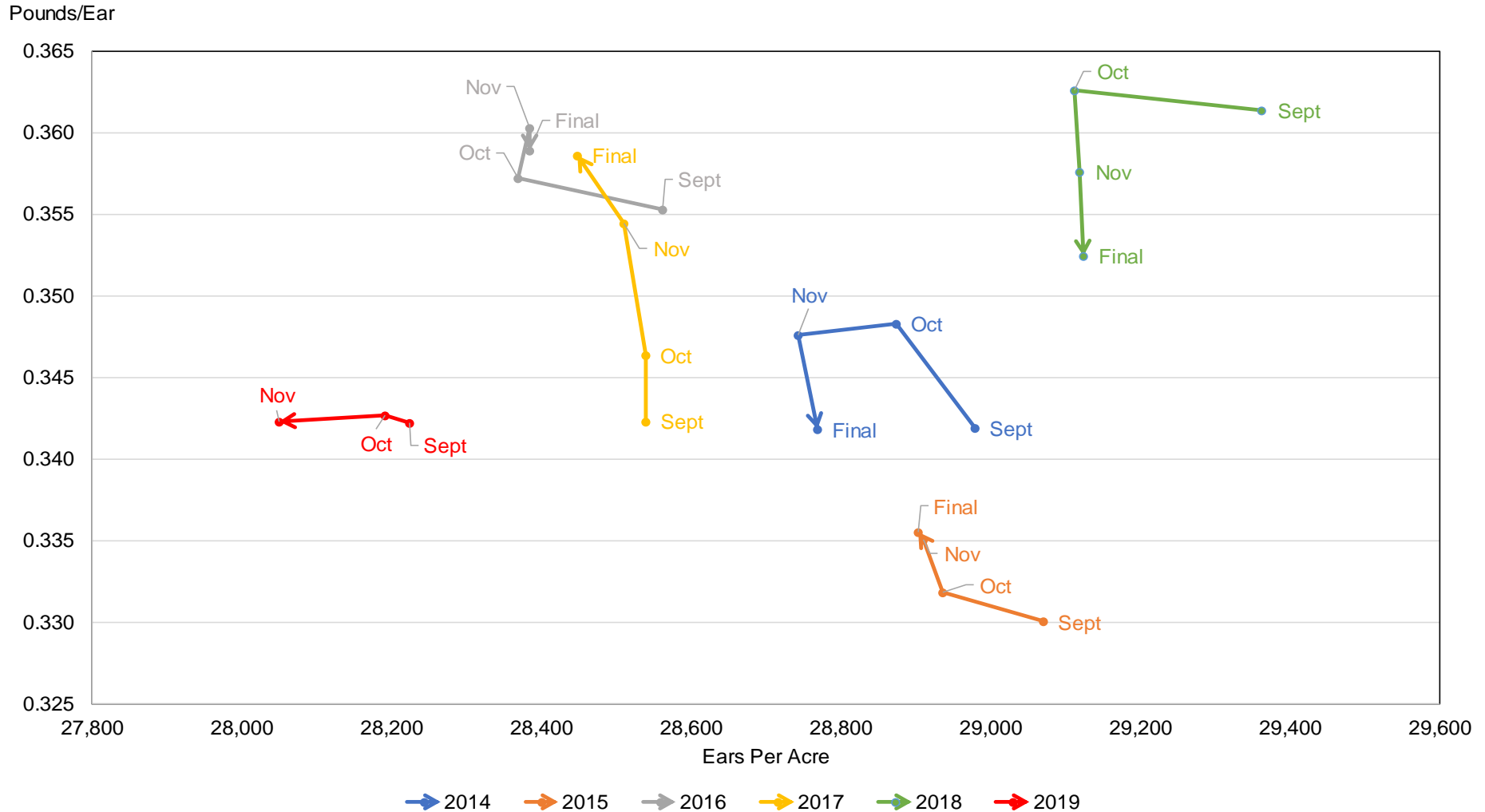
U.S. 167.0  
 -1.4  
 # Record High  
 NC = No Change



# Corn Objective Yield Region

## Ears per Acre vs. Implied Ear Weight

Note: Implied Ear Weight is only calculated for display purposes. Ears per Acre are from survey.



Implied Ear Weight = Published Yield \* 56 / Ears per Acre



# Corn Objective Yield - November

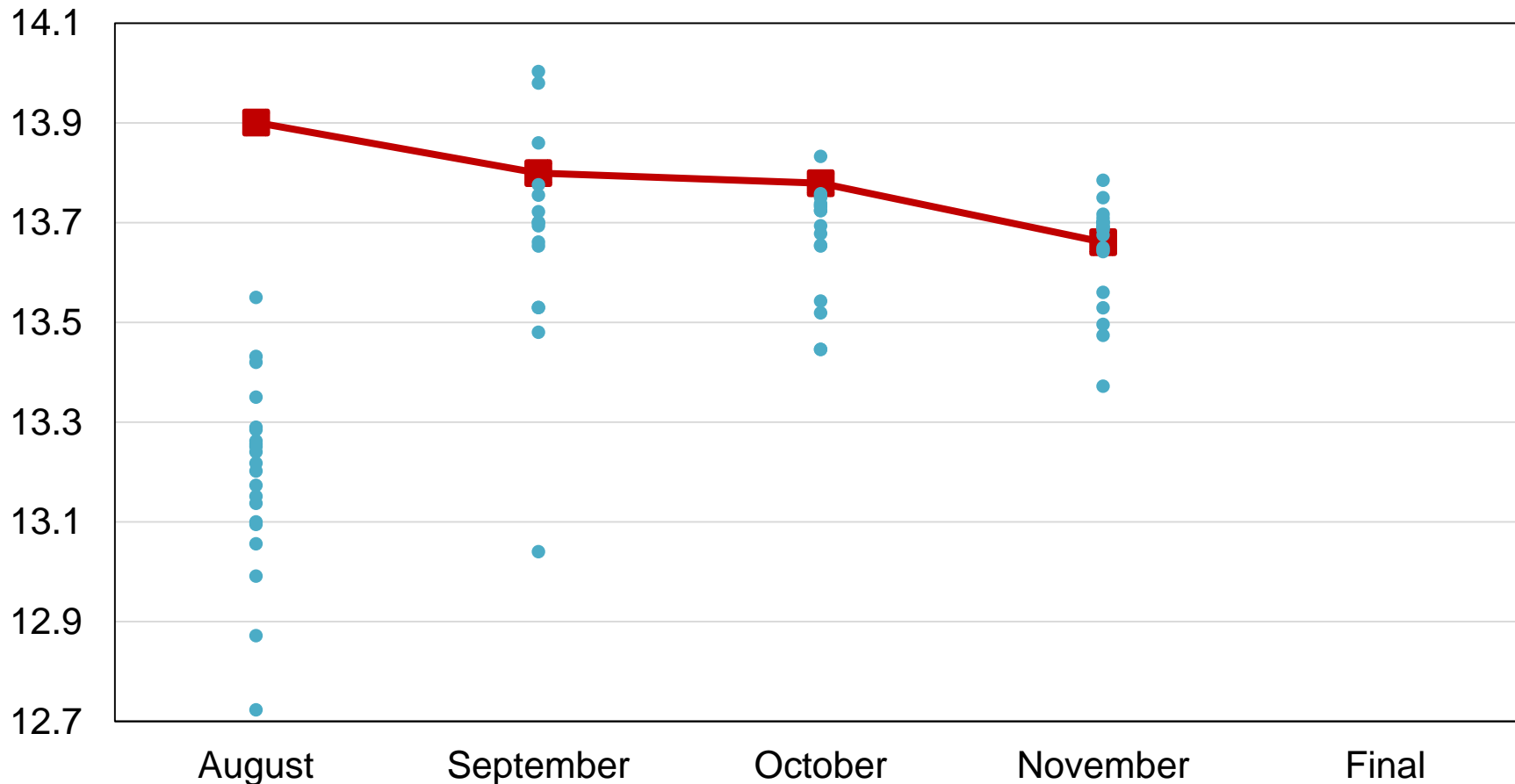
## Percent of Samples Processed in the Lab

| Year | Dent Stage     | Mature |
|------|----------------|--------|
|      | <i>Percent</i> |        |
| 2015 | < 0.5          | 96     |
| 2016 | < 0.5          | 96     |
| 2017 | < 0.5          | 96     |
| 2018 | < 0.5          | 96     |
| 2019 | 1              | 94     |



# 2019 United States Corn Production Industry Expectations vs NASS

Billion Bushels



■ NASS Forecast    
 ● Individual Industry Expectation



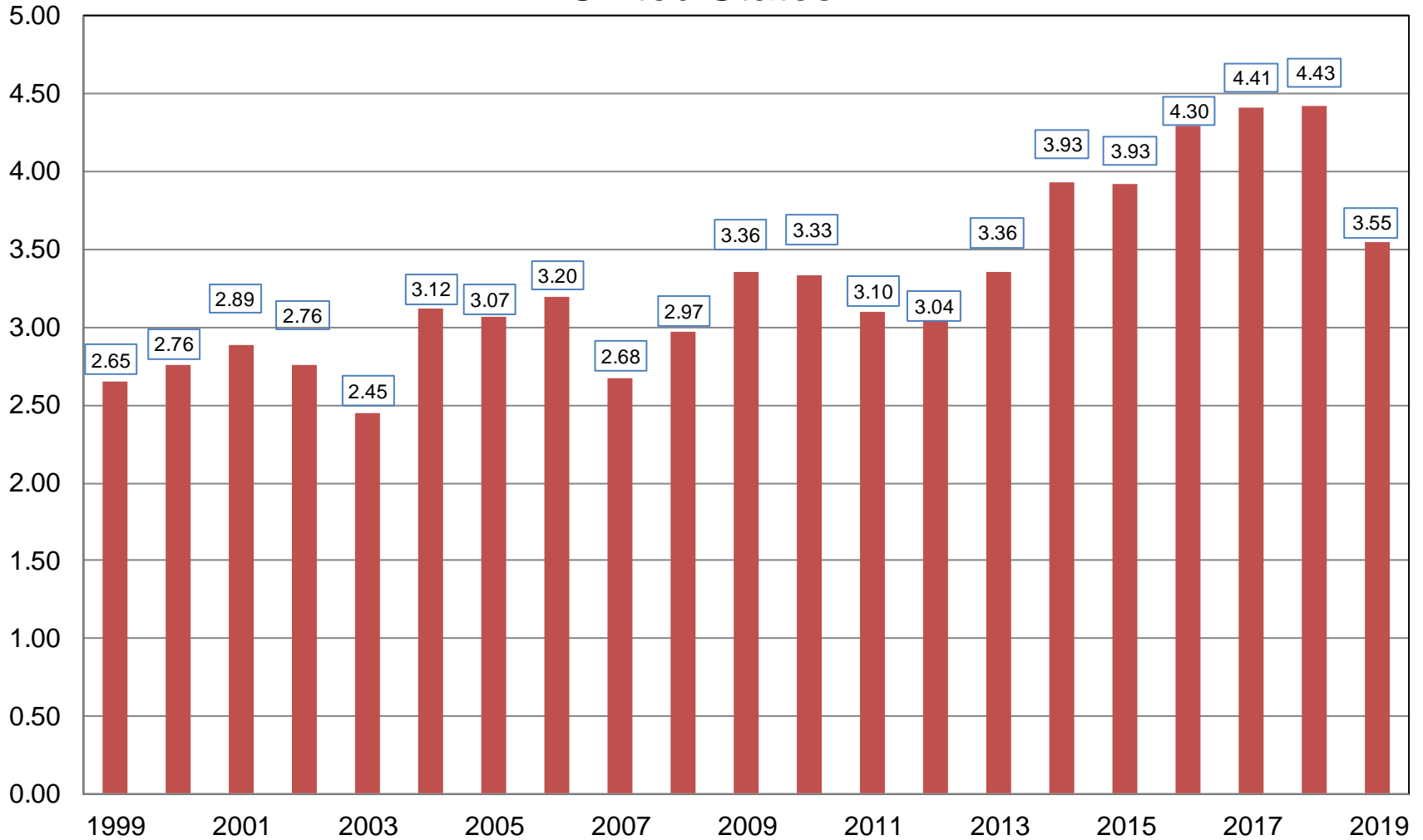
# November 2019 Crop Production

| Crop       | Unit   | November 2019 | % Change From Previous Forecast | % Change From Previous Season |
|------------|--------|---------------|---------------------------------|-------------------------------|
| Soybeans   |        |               |                                 |                               |
| Harvested  | Mil Ac | 75.6          | NC                              | -13.7                         |
| Yield      | Bu/Ac  | 46.9          | NC                              | -7.3                          |
| Production | Bil Bu | 3.55          | -<0.1                           | -19.8                         |



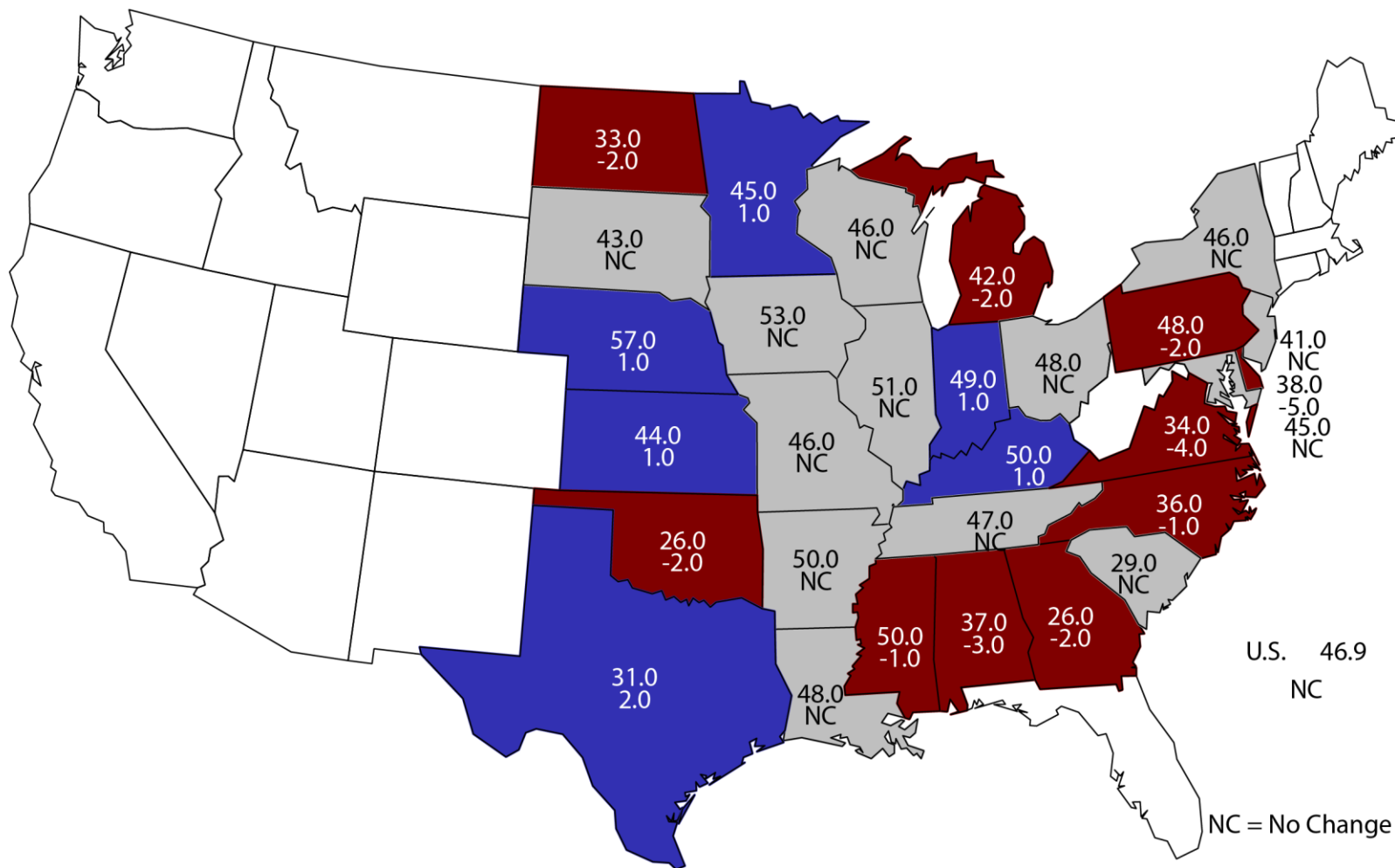
# Soybean Production United States

Billion Bushels



# November 1, 2019 Soybean Yield

## Bushels and Change From Previous Forecast

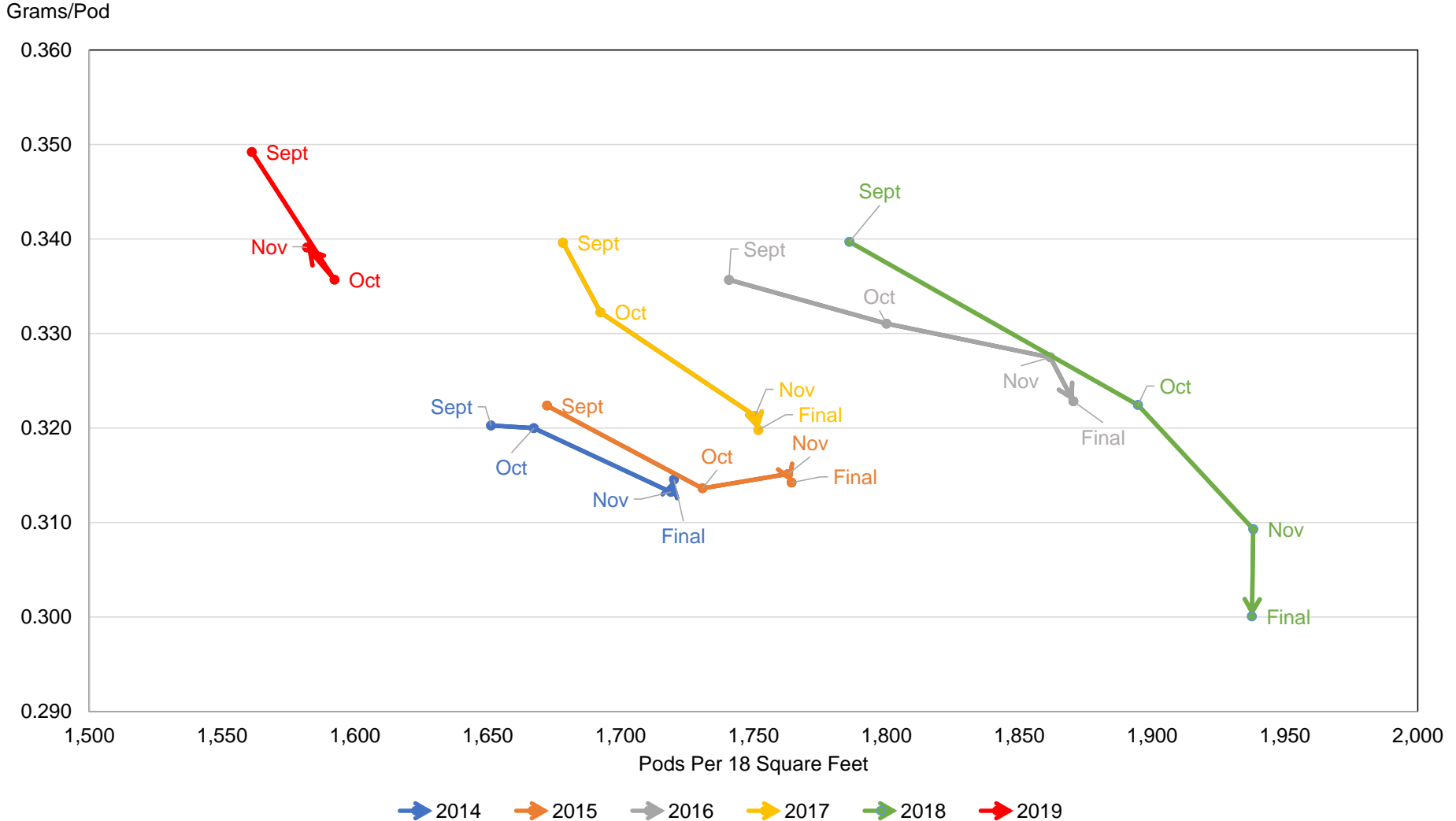




# Soybean Objective Yield Region

## Pods per 18 Square Feet vs. Implied Pod Weight

Note: Implied Pod Weight is only calculated for display purposes. Pods per 18 Square Feet are from survey.



$$\text{Implied Pod Weight} = \text{Published Yield} / \text{Pods per 18 Square Feet} / 0.0889$$



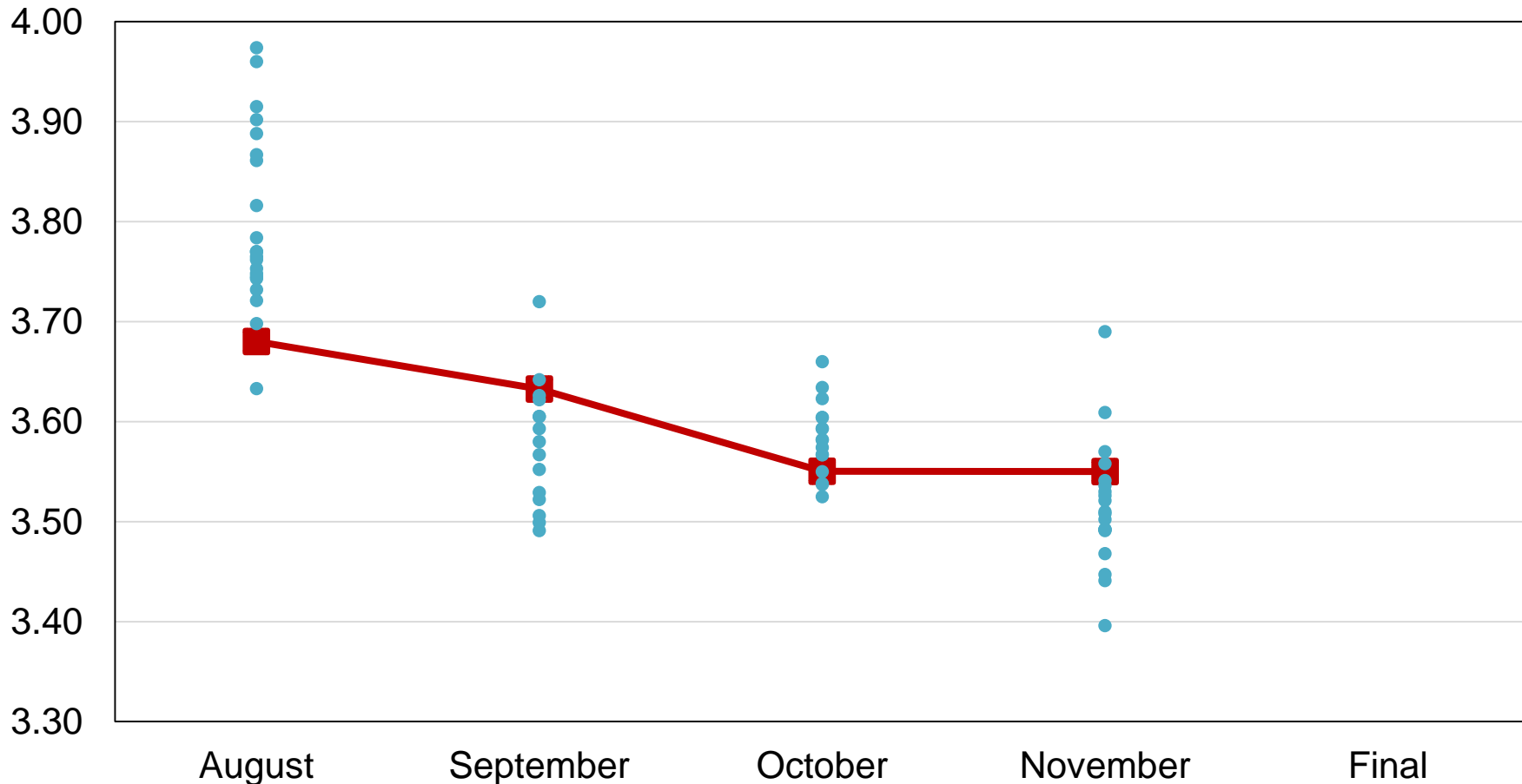
# Soybean Objective Yield - November

## Percent of Samples Processed in the Lab

| Year | Mature         |
|------|----------------|
|      | <i>Percent</i> |
| 2015 | 95             |
| 2016 | 93             |
| 2017 | 93             |
| 2018 | 93             |
| 2019 | 91             |

# 2019 United States Soybean Production Industry Expectations vs NASS

Billion Bushels



■ NASS Forecast     
 ● Individual Industry Expectation



# November 2019 Crop Production

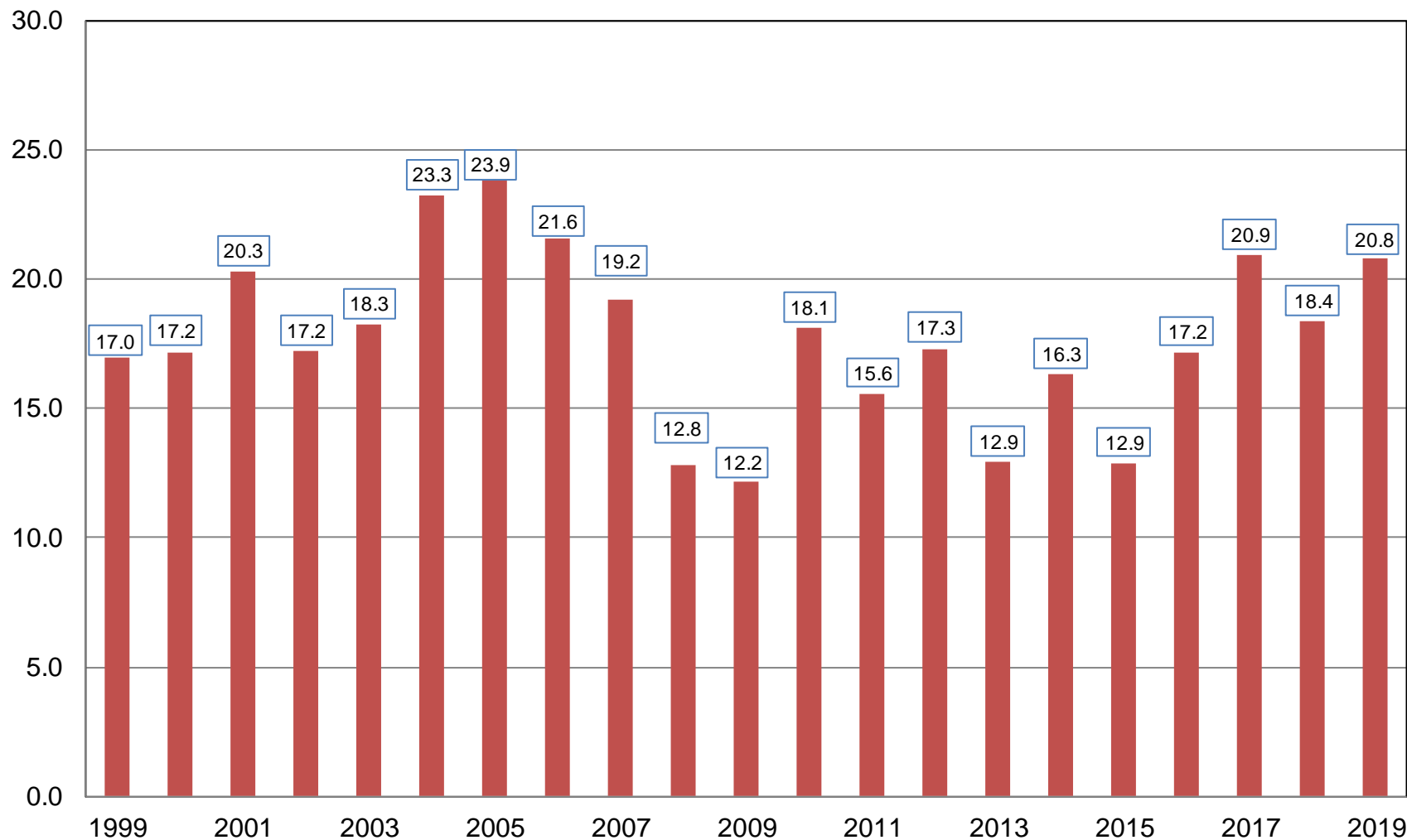
| Crop       | Unit    | November 2019 | % Change From Previous Forecast | % Change From Previous Season |
|------------|---------|---------------|---------------------------------|-------------------------------|
| All Cotton |         |               |                                 |                               |
| Harvested  | Mil Ac  | 12.5          | NC                              | +22.6                         |
| Yield      | Lb/Ac   | 799           | -4.1                            | -7.5                          |
| Production | Mil Bls | 20.8          | -4.1                            | +13.3                         |





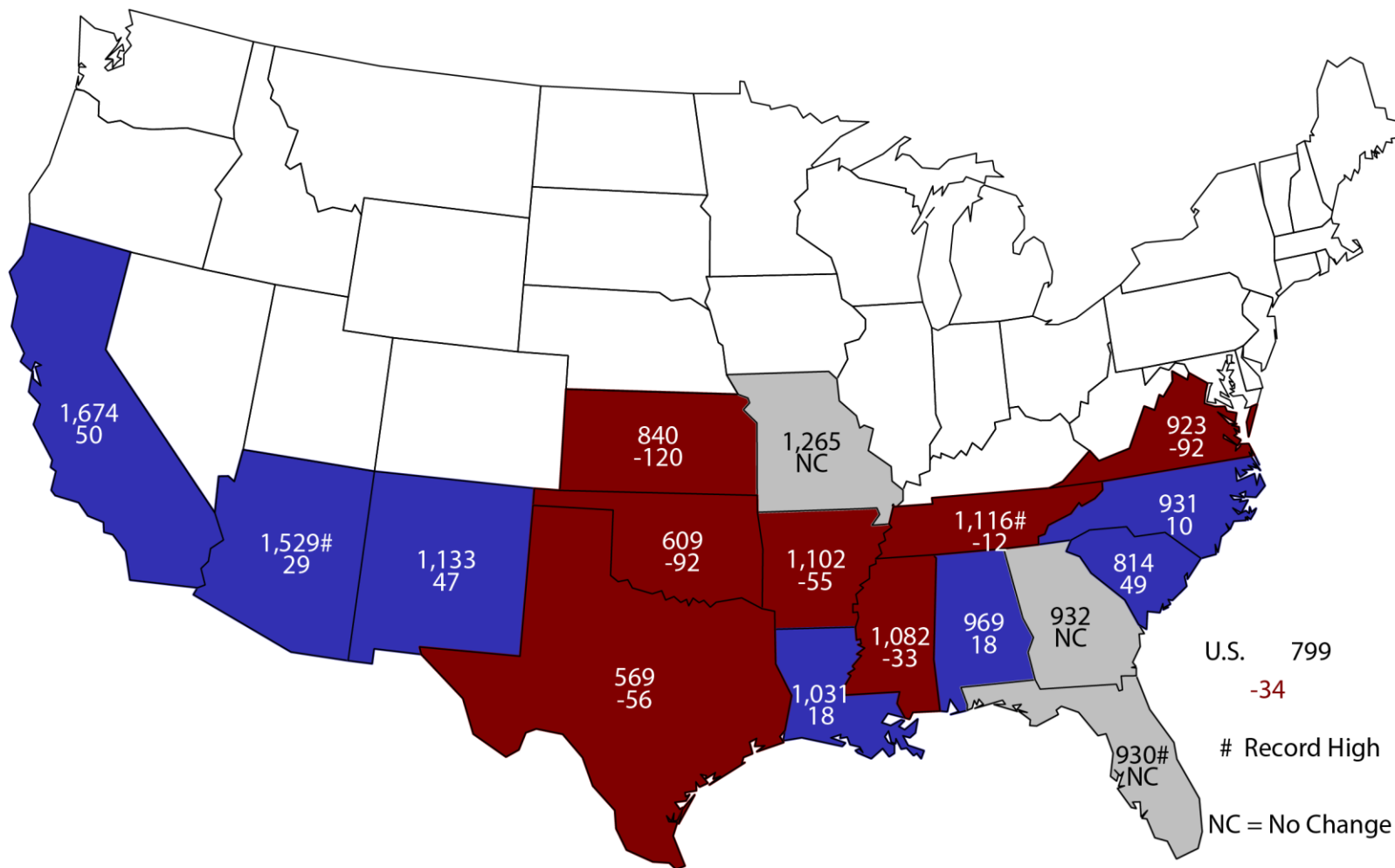
# All Cotton Production United States

Million Bales



# November 1, 2019 All Cotton Yield

## Pounds and Change From Previous Forecast



U.S. 799  
-34

# Record High

NC = No Change



# November 2019 Crop Production

| Crop       | Unit    | November 2019 | % Change From Previous Forecast | % Change From Previous Season |
|------------|---------|---------------|---------------------------------|-------------------------------|
| Rice       |         |               |                                 |                               |
| Harvested  | Mil Ac  | 2.48          | NC                              | -15.0                         |
| Yield      | Lbs/Ac  | 7,587         | -0.4                            | -1.4                          |
| Production | Mil Cwt | 188           | -0.4                            | -16.2                         |



# November 2019 Crop Production

| Crop       | Unit    | November 2019 | % Change From Previous Forecast | % Change From Previous Season |
|------------|---------|---------------|---------------------------------|-------------------------------|
| Peanuts    |         |               |                                 |                               |
| Harvested  | Mil Ac  | 1.38          | NC                              | +0.7                          |
| Yield      | Lbs/Ac  | 4,080         | +2.9                            | +2.0                          |
| Production | Bil Lbs | 5.64          | +2.9                            | +2.7                          |



# November 2019 Crop Production

| Crop       | Unit   | November 2019 | % Change From Previous Forecast | % Change From Previous Season |
|------------|--------|---------------|---------------------------------|-------------------------------|
| Sorghum    |        |               |                                 |                               |
| Harvested  | Mil Ac | 4.72          | NC                              | -6.8                          |
| Yield      | Bu/Ac  | 75.9          | +2.7                            | +5.3                          |
| Production | Mil Bu | 358           | +2.6                            | -2.0                          |



# November 2019 Crop Production

| Crop       | Unit     | November 2019 | % Change From Previous Forecast | % Change From Previous Season |
|------------|----------|---------------|---------------------------------|-------------------------------|
| Production |          |               |                                 |                               |
| Sugarcane  | Mil Tons | 34.0          | -2.2                            | -1.5                          |
| Sugarbeets | Mil Tons | 29.5          | -12.2                           | -11.0                         |



# November 2019 Crop Production

| Crop       | Unit     | November 2019 | % Change From Previous Forecast | % Change From Previous Year |
|------------|----------|---------------|---------------------------------|-----------------------------|
| Production |          |               |                                 |                             |
| Cottonseed | Mil Tons | 6.45          | -4.0                            | +14.6                       |
| Potatoes   | Mil Cwt  | 422           | NA                              | -6.1                        |



# Small Grain Annual Summary 2019

| Crop          | Unit   | November 2019 | % Change From Previous Estimate | % Change From Previous Season |
|---------------|--------|---------------|---------------------------------|-------------------------------|
| Wheat, Spring |        |               |                                 |                               |
| Harvested     | Mil Ac | 11.7          | -6.2                            | -9.6                          |
| Yield         | Bu/Ac  | 48.2          | -0.2                            | -0.2                          |
| Production    | Mil Bu | 562           | -6.3                            | -9.8                          |





# Small Grain Annual Summary 2019

| Crop         | Unit   | November 2019 | % Change From Previous Estimate | % Change From Previous Season |
|--------------|--------|---------------|---------------------------------|-------------------------------|
| Wheat, Durum |        |               |                                 |                               |
| Harvested    | Mil Ac | 1.18          | -8.9                            | -40.5                         |
| Yield        | Bu/Ac  | 45.7          | +2.0                            | +15.7                         |
| Production   | Mil Bu | 53.8          | -6.9                            | -31.1                         |
| Stocks       | Mil Bu | 88.4          | -4.8                            | -1.8                          |



# Small Grain Annual Summary 2019

| Crop       | Unit   | November 2019 | % Change From Previous Estimate | % Change From Previous Season |
|------------|--------|---------------|---------------------------------|-------------------------------|
| Wheat, All |        |               |                                 |                               |
| Harvested  | Mil Ac | 37.2          | -2.3                            | -6.2                          |
| Yield      | Bu/Ac  | 51.7          | +0.2                            | +8.6                          |
| Production | Bil Bu | 1.92          | -2.1                            | +1.9                          |
| Stocks     | Bil Bu | 2.34          | -1.7                            | -1.9                          |



# Small Grain Annual Summary 2019

| Crop       | Unit   | November 2019 | % Change From Previous Estimate | % Change From Previous Season |
|------------|--------|---------------|---------------------------------|-------------------------------|
| Barley     |        |               |                                 |                               |
| Harvested  | Mil Ac | 2.18          | -1.4                            | +10.1                         |
| Yield      | Bu/Ac  | 77.7          | +0.4                            | +0.3                          |
| Production | Mil Bu | 170           | -1.0                            | +10.4                         |
| Stocks     | Mil Bu | 190           | -0.9                            | +8.6                          |



# Small Grain Annual Summary 2019

| Crop       | Unit   | November 2019 | % Change From Previous Estimate | % Change From Previous Season |
|------------|--------|---------------|---------------------------------|-------------------------------|
| Oats       |        |               |                                 |                               |
| Harvested  | Mil Ac | 0.826         | -1.9                            | -4.5                          |
| Yield      | Bu/Ac  | 64.3          | -0.2                            | -0.9                          |
| Production | Mil Bu | 53.1          | -1.9                            | -5.3                          |
| Stocks     | Mil Bu | 60.1          | -1.8                            | -19.6                         |



# Upcoming Reports

| Release Date | Report Title  |
|--------------|---|
| November 13  | Census: Irrigation and Water Management               |
| November 21  | Farm Labor  |
| November 22  | Cattle on Feed  |
| November 25  | Cotton Ginnings                                       |
| November 27  | Agricultural Prices                                   |
| December 2   | CAIR: Cotton System, Fats & Oils, and Grain Crushings |
| December 10  | Crop Production<br>Cotton Ginnings                    |

**STAT  
CHAT  
SERIES**

Join @usda\_nass using #StatChat to ask NASS's Lance Honig about the *Crop Production* report.

@usda\_nass

**#STATCHAT**



**FRI  
NOV 8  
1PM ET**





United States Department of Agriculture  
**National Agricultural Statistics Service**

---

---

**All Reports Available At**  
[www.nass.usda.gov](http://www.nass.usda.gov)

**For Questions**  
202-720-2127  
800-727-9540  
[nass@nass.usda.gov](mailto:nass@nass.usda.gov)