



United States Department of Agriculture  
**National Agricultural Statistics Service**

---

---



Cattle Inventory  
Sheep and Goats Inventory  
January 1, 2020

Executive Briefing



# Survey Overviews



	Cattle	Sheep and Goats
Data collection period	December 31 – January 16	
Sample size	35,100	21,600
Collection methods	Mail, telephone, internet, face-to-face interview	
Primary data items	Total inventory, inventory by class, calf crop	Total inventory, inventory by class, lamb/kid crop

# U.S. Cattle and Calves Revisions

Survey	Item	Initial Estimate (1,000 head)	Current Revision (1,000 head)	Current Estimate (1,000 head)
July 1, 2018	All cattle and calves	103,200.0	-200.0 -0.2%	102,800.0
	Calf crop	36,500.0	-187.3 -0.5%	36,312.7
January 1, 2019	All cattle and calves	94,759.7	45.0 0.0%	94,804.7
	Calf crop	36,402.7	-90.0 -0.2%	36,312.7
July 1, 2019	All cattle and calves	103,000.0	-100.0 -0.1%	102,900.0
	Calf crop	36,300.0	-240.4 -0.7%	36,059.6



# U.S. Cattle Inventory January 1



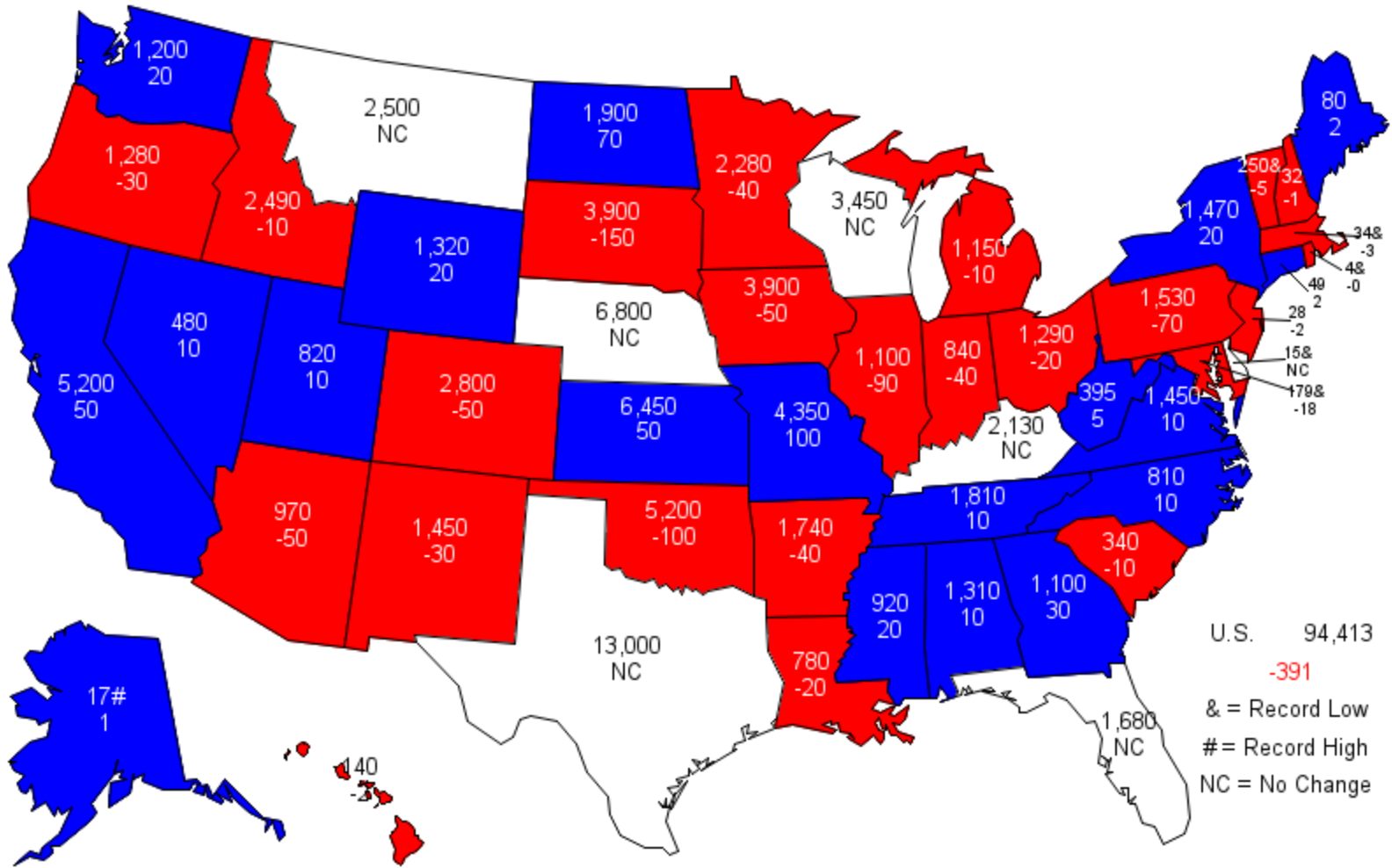
Items	2019 (1,000 head)	2020 (1,000 head)	% PY
All cattle and calves	94,805	94,413	100
All cows and heifers that have calved	41,044	40,651	99
Beef cows	31,691	31,317	99
Milk cows	9,353	9,335	100
All heifers 500 pounds and over	20,210	20,114	100
For beef cow replacement	5,885	5,772	98
Beef replacements expected to calve	3,529	3,499	99
For milk cow replacement	4,702	4,637	99
Milk replacements expected to calve	3,006	2,931	98
Other heifers	9,624	9,706	101
Steers 500 pounds and over	16,758	16,671	99
Bulls 500 pounds and over	2,253	2,237	99
Calves under 500 pounds	14,540	14,739	101
All cattle on feed	14,368	14,668	102
Previous year calf crop	36,313	36,060	99

Totals may not add due to rounding

January 31, 2020

# January 1, 2020 All Cattle and Calves

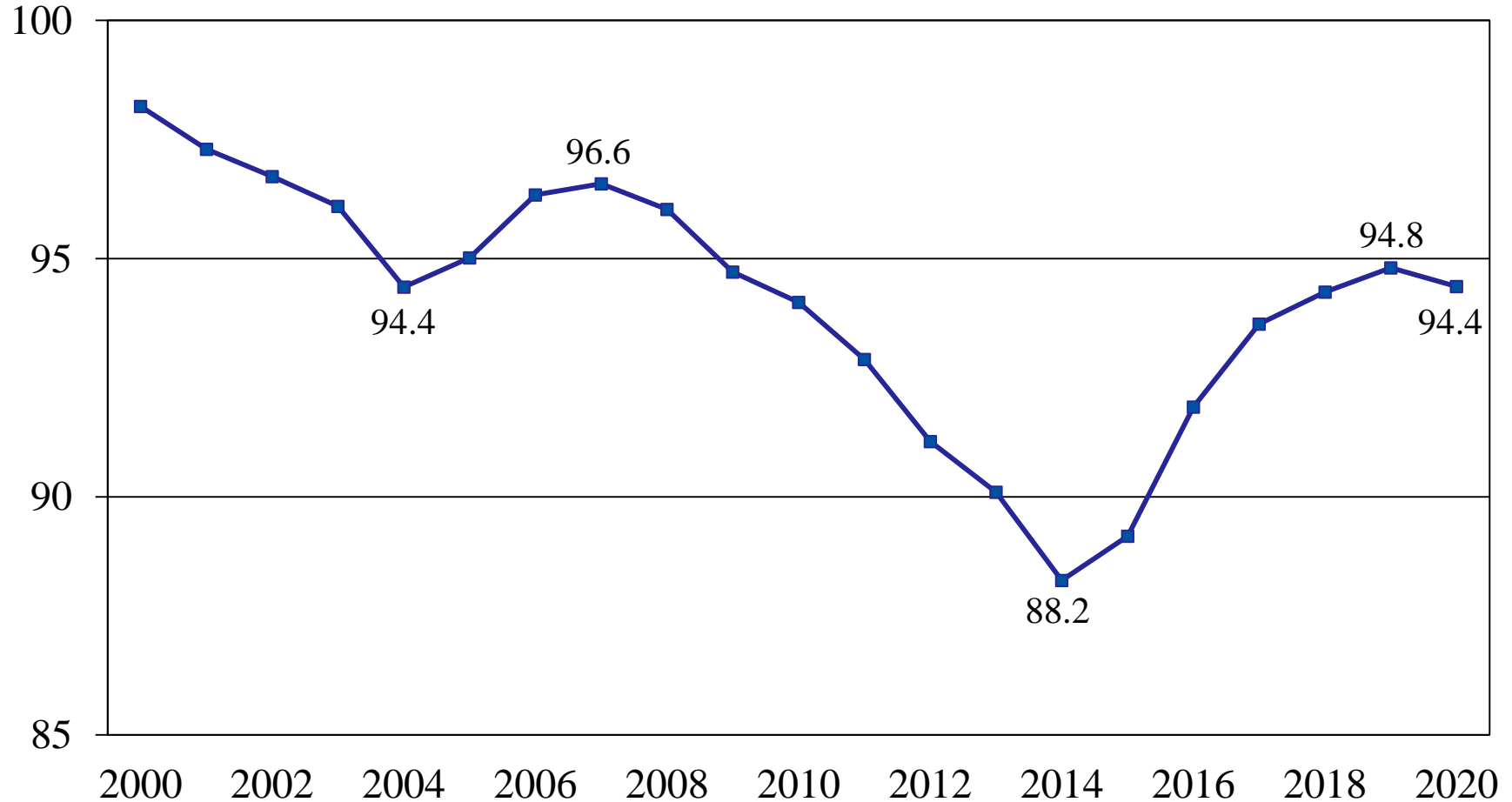
(000) Head and Number Change from Previous Year



U.S. 94,413  
 -391  
 & = Record Low  
 # = Record High  
 NC = No Change

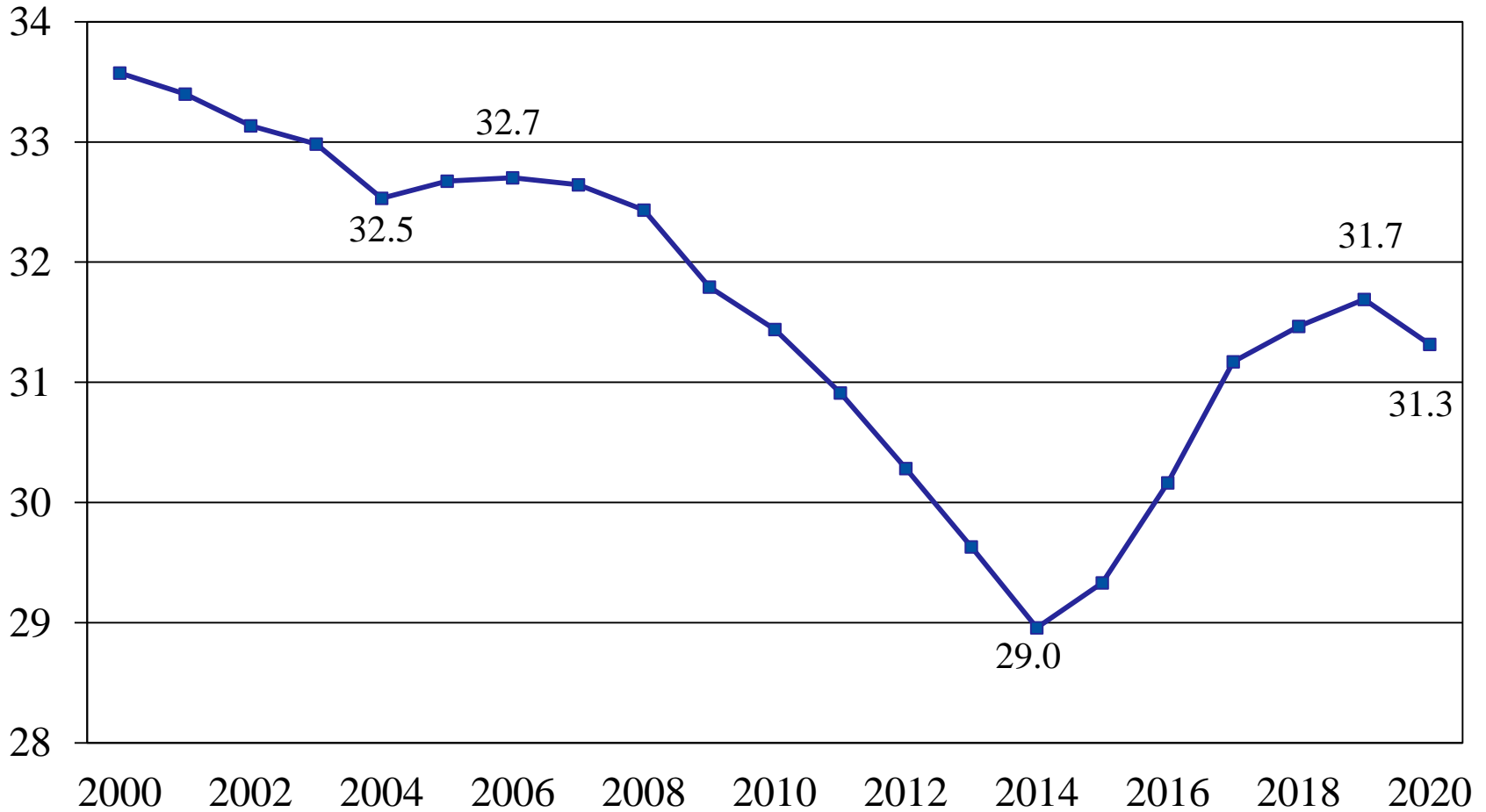
# U.S. All Cattle and Calves

Million head

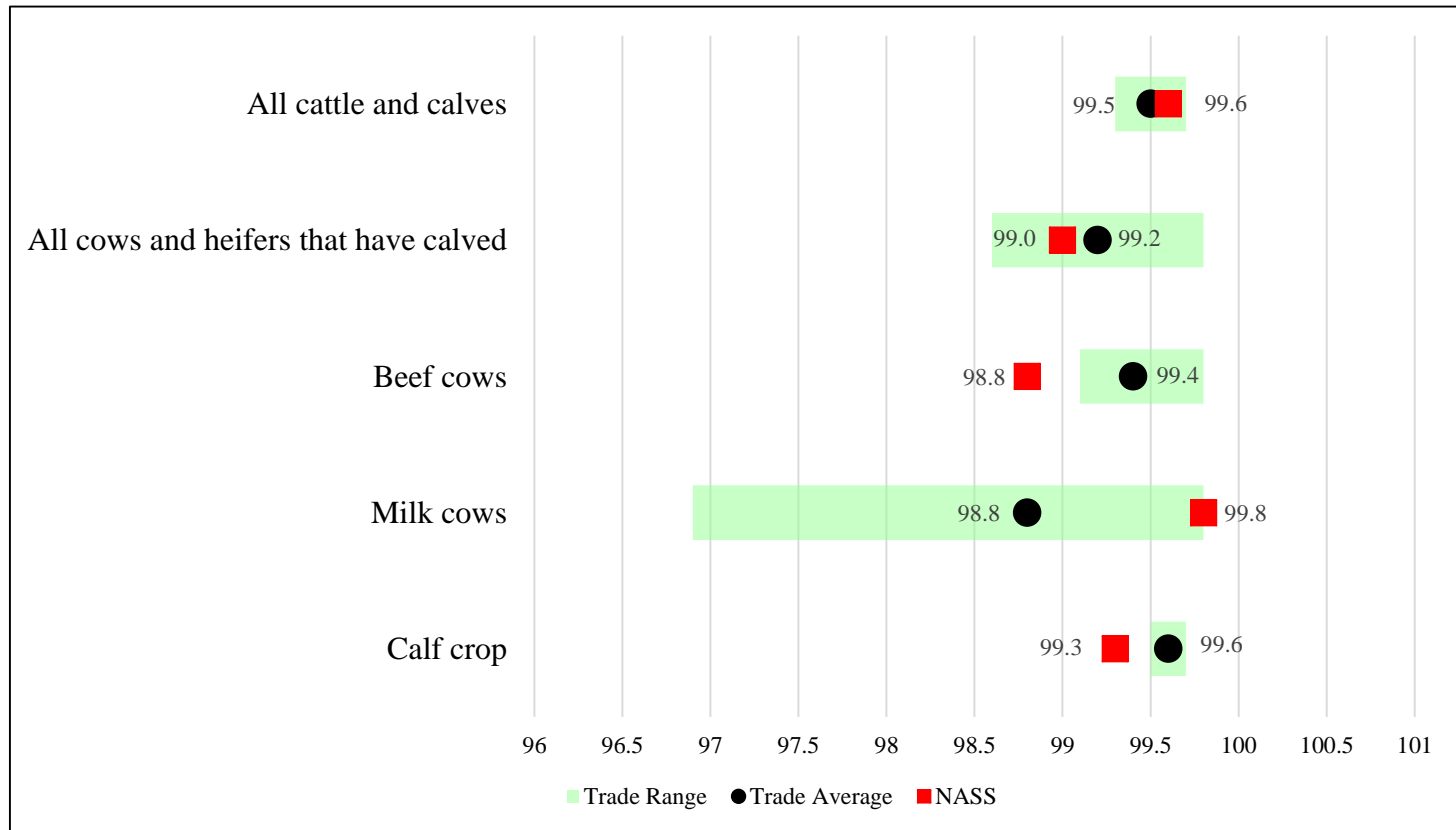


# U.S. Beef Cows

Million head



# Trade Expectations Compared to NASS Estimates as Percent of Previous Year

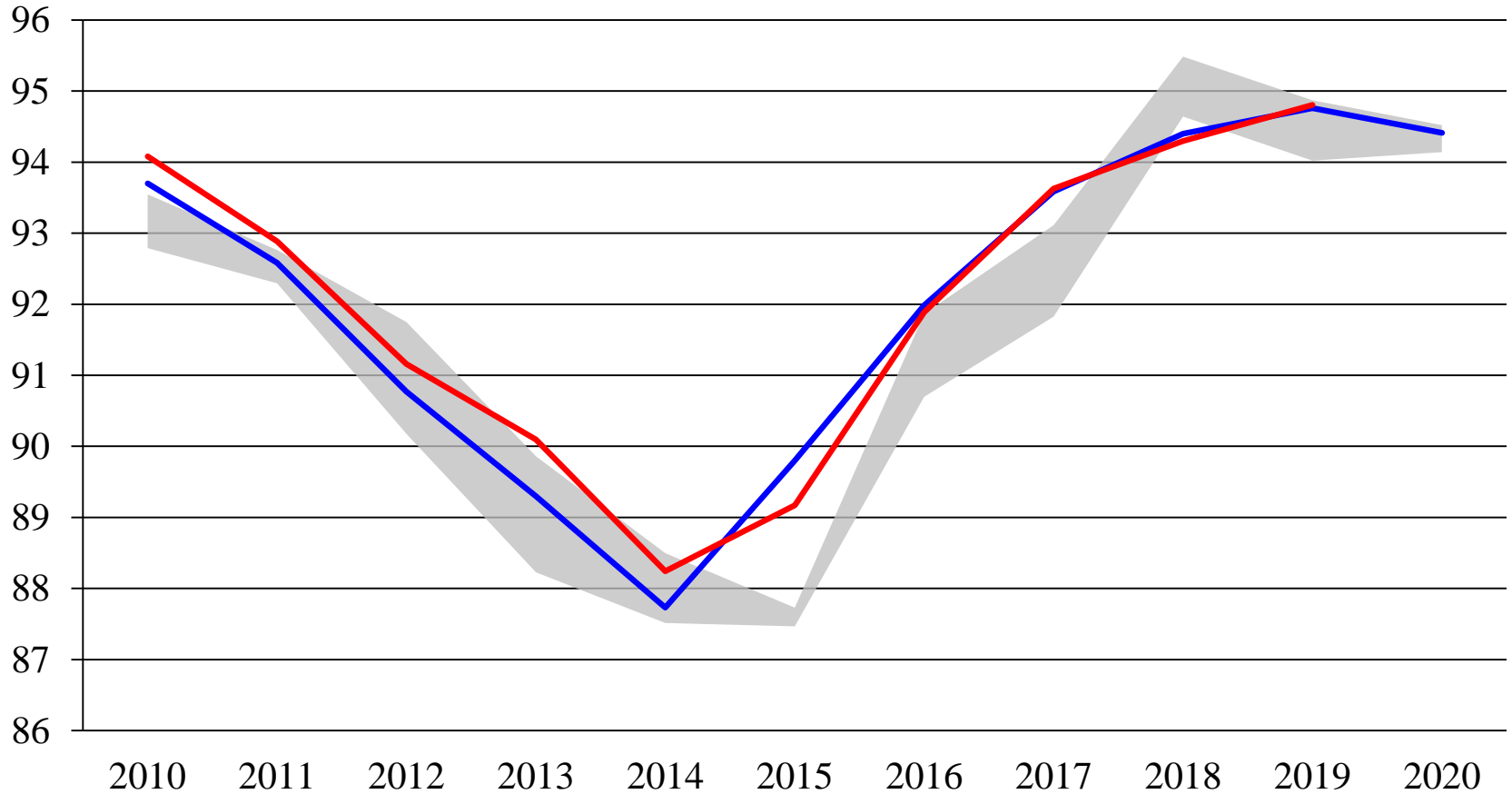




# All Cattle and Calves Inventory

## First Estimate versus Final Estimate

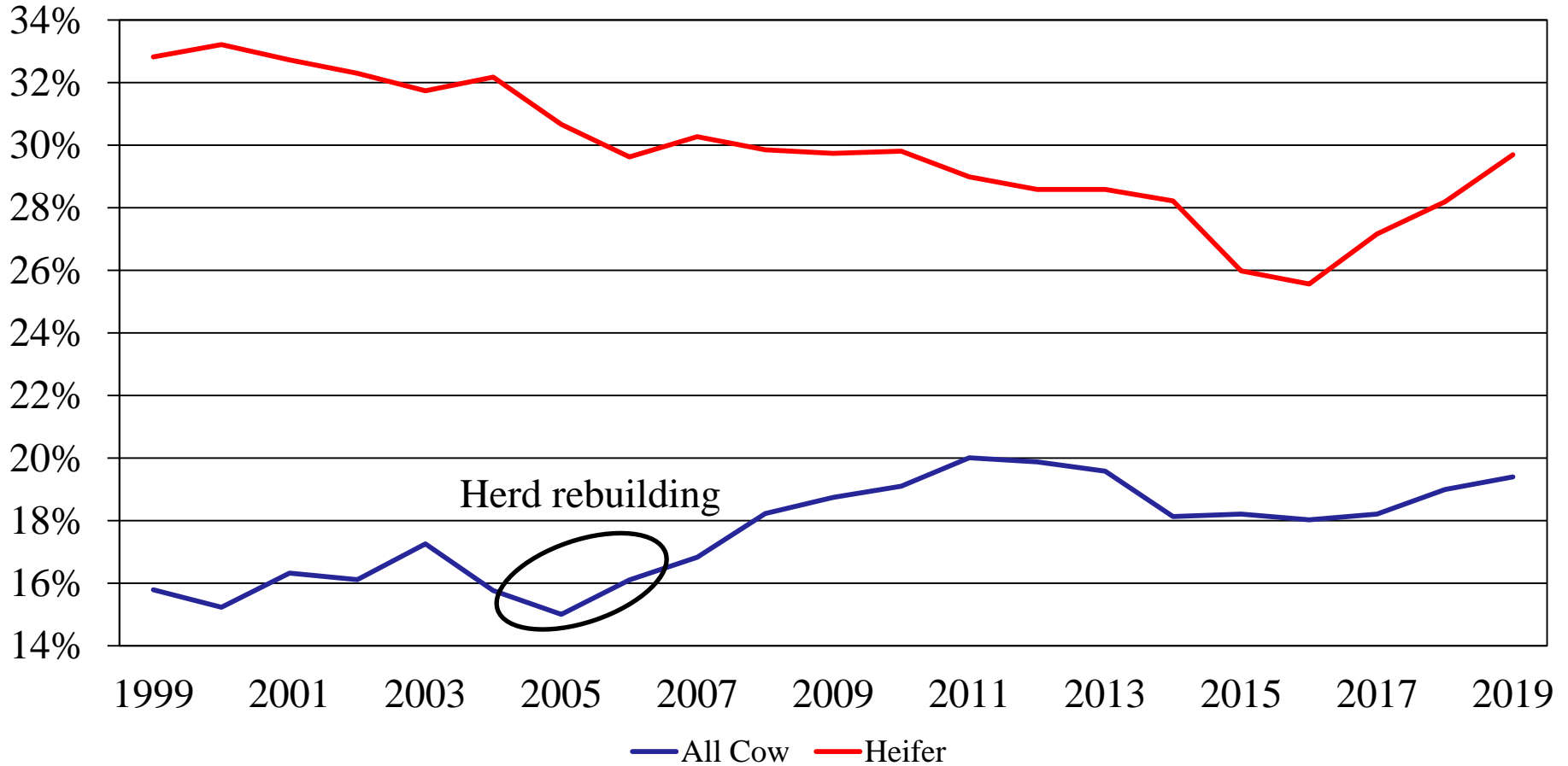
Million head



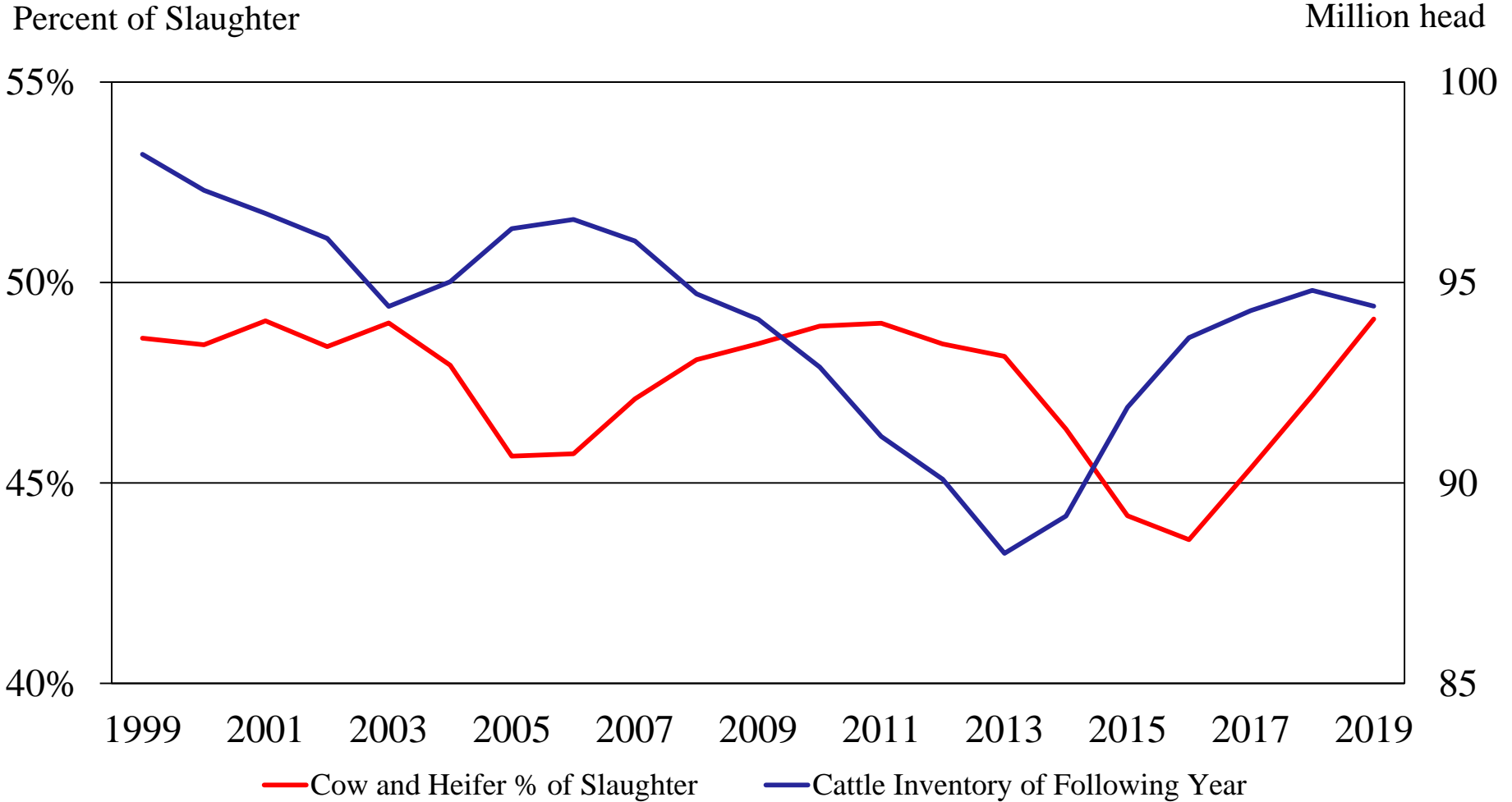
Lower Trade Range    Trade Range    ASB First Estimate    ASB Final Estimate

# All Cow & Heifer Slaughter as a Percent of Total Slaughter

Percent of Slaughter



# Cattle Inventory vs Cow and Heifer Slaughter as a Percent of Slaughter as a Percent of Slaughter





# U.S. Cattle on Feed on January 1



Item	2019 (1,000 head)	2020 (1,000 head)	% PY
Capacity of 1,000 head or more	11,690	11,958	102
Percent of total	81.4%	81.5%	
Capacity of less than 1,000 head	2,678	2,710	101
Percent of total	18.6%	18.5%	
All cattle on feed	14,368	14,668	102



# U.S. Feeder Cattle Supply on January 1



Item	2019 (1,000 head)	2020 (1,000 head)	% PY
Calves under 500 pounds	14,540	14,739	101
Steers and other heifers 500 pounds and over	26,381	26,377	100
Total supply	40,921	41,116	100
All cattle on feed	14,368	14,668	102
Feeder cattle supply	26,553	26,448	100
Number grazing on small grain pasture, 3 States	1,900	1,610	85
Kansas, Oklahoma, Texas			

Totals may not add due to rounding

January 31, 2020



# U.S. Sheep and Lambs Revisions

Survey	Item	Initial Estimate (1,000 head)	Current Revision	Current Estimate (1,000 head)
January 1, 2019	All sheep and lambs	5,230	No Revision	5,230
	Lamb crop	3,235	No Revision	3,235



# U.S. Sheep and Lambs Inventory January 1

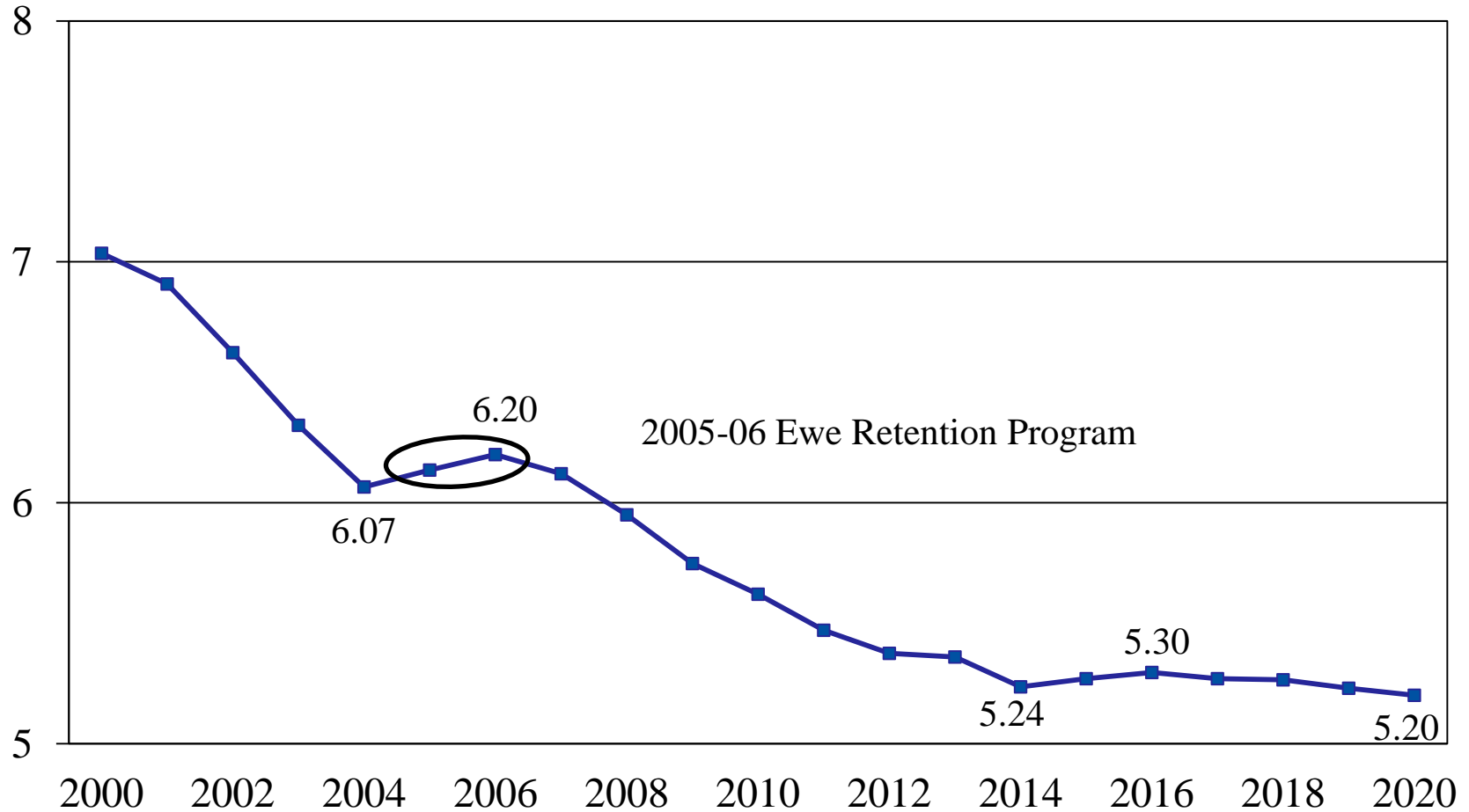
Items	2019 (1,000 head)	2020 (1,000 head)	% PY
All sheep and lambs	5,230	5,200	99
Market	1,410	1,390	99
Breeding	3,820	3,810	100
Replacement lambs under one year old	650	660	102
Ewes one year old and older	3,000	2,980	99
Rams one year old and older	170	170	100
Previous year lamb crop	3,235	3,230	100

Totals may not add due to rounding

January 31, 2020

# U.S. All Sheep and Lambs Inventory

Million head





# U.S. Goats and Kids Revisions

Survey	Item	Initial Estimate (1,000 head)	Current Revision (1,000 head)	Current Estimate (1,000 head)
January 1, 2019	All goats and kids	2,622	No Revision	2,622
	Kid crop	1,638	-3 -0.2%	1,635



# U.S. Goats and Kids Inventory January 1



Items	2019 (1,000 head)	2020 (1,000 head)	% PY
All goats and kids	2,622	2,660	101
Market	474	478	101
Breeding	2,148	2,182	102
Replacement kids under one year old	393	400	102
Does one year old and older	1,595	1,619	102
Bucks one year old and older	160	163	102
Previous year kid crop	1,635	1,640	100

Totals may not add due to rounding



# U.S. Goat Inventory by Type January 1



Items	2019 (1,000 head)	2020 (1,000 head)	% PY
All goats	2,622	2,660	101
Meat and other	2,055	2,090	102
Milk	430	440	102
Angora	137	130	95

Totals may not add due to rounding

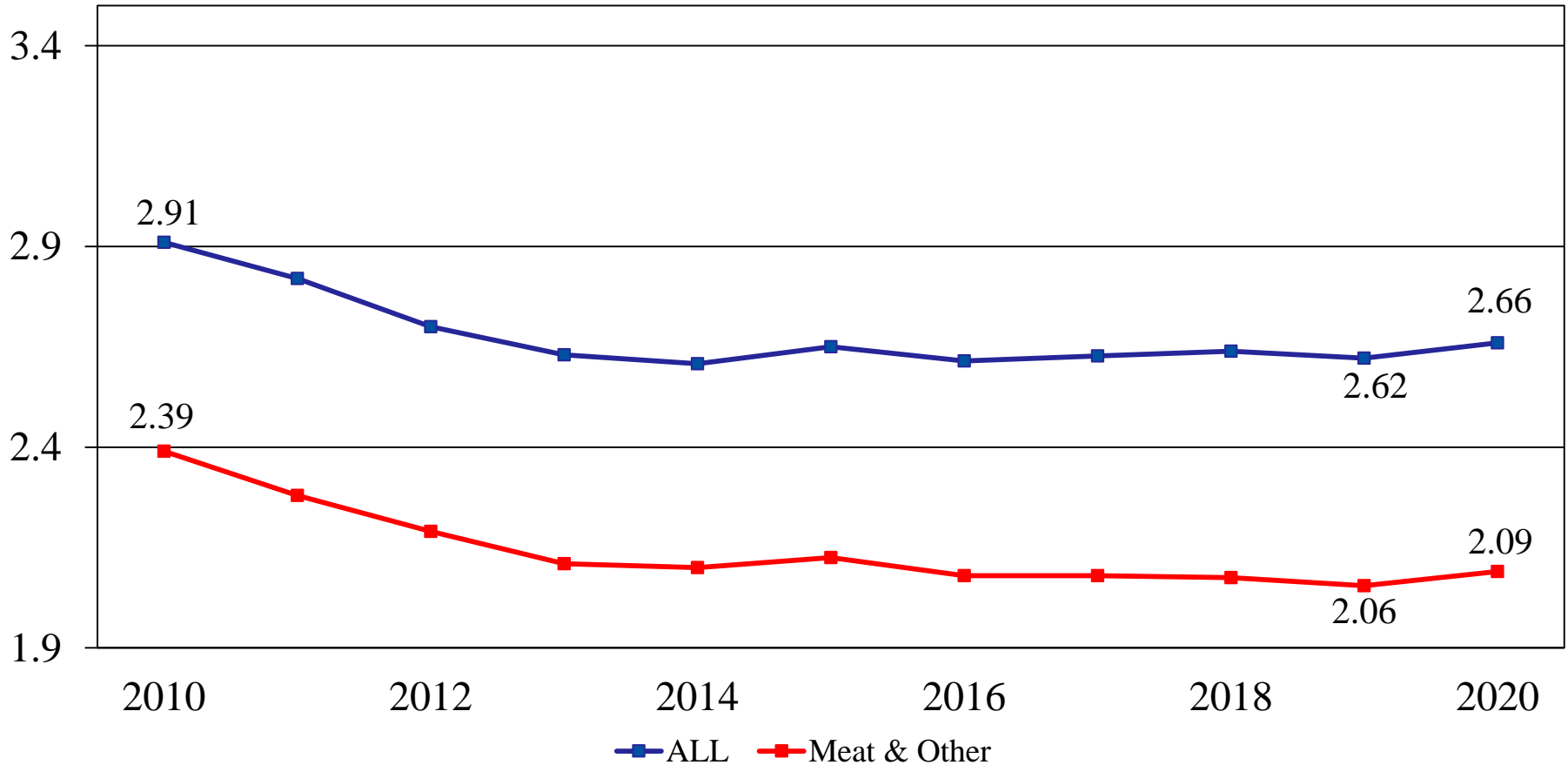
January 31, 2020



# U.S. All Goats and Kids Inventory versus Meat and Other Goats and Kids Inventory



Million head






# Upcoming NASS Reports



Release Date	Report Title
February 3	CAIR: Cotton System, Fats & Oils, Flour Milling, and Grain Crushings
February 4	Dairy Products
February 11	Crop Production
February 20	Farms & Land in Farms Livestock Slaughter Milk Production
February 21	Cattle on Feed
February 24	Cold Storage
February 28	Agricultural Prices Cold Storage – Annual

 United States Department of Agriculture

# USDA's **Agricultural Outlook Forum** **96th Annual** *The Innovation Imperative: Shaping the Future of Agriculture*

February 21-22, 2020 • Crystal Gateway Marriott Hotel, Arlington, Virginia

## The Agricultural Outlook Forum

- **USDA's largest annual gathering and the agricultural sector's premiere event**
- **Brings together more than 1,500 sector leaders and professionals to connect and discuss current and key emerging issues in agriculture**
- **More than 30 sessions covering commodity markets and outlook, international trade, agricultural policy, as well as cutting edge topics that will influence the future of agriculture**





United States Department of Agriculture  
**National Agricultural Statistics Service**

---



All Reports Available At  
[www.nass.usda.gov](http://www.nass.usda.gov)

For Questions  
(202) 720-3570  
(800) 727-9540  
[nass@nass.usda.gov](mailto:nass@nass.usda.gov)