

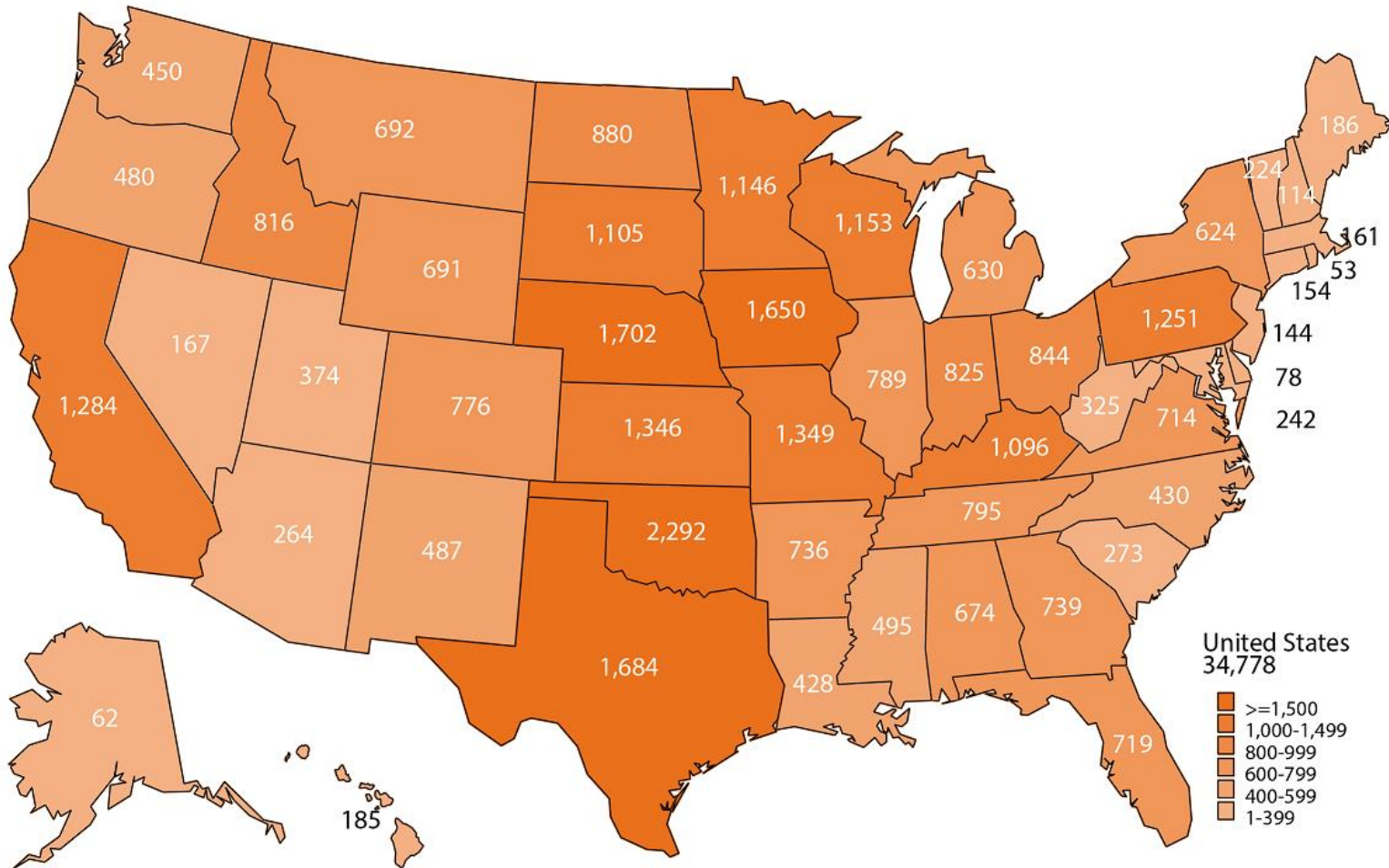


January Cattle and Sheep and Goats

Agricultural Statistics Board Briefing

Travis Averill, Chief
Livestock Branch

January 2022 Cattle Survey Sample Sizes

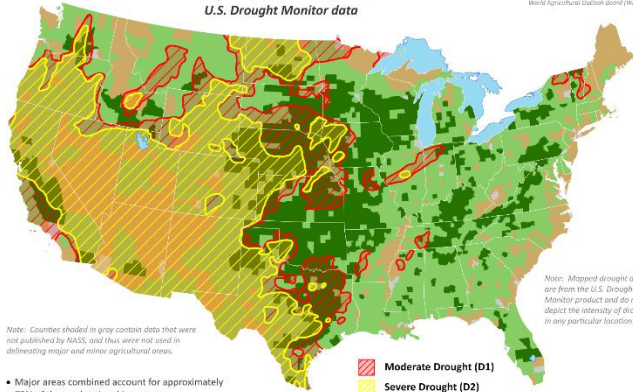


January 2022 Cattle Survey Drought Maps

U.S. Cattle Areas Experiencing Drought

Reflects December 29, 2020
U.S. Drought Monitor data

USDA United States Department of Agriculture
This product was prepared by the USDA Office of the Chief Economist (OCE) World Agricultural Outlook Board (WAOB)



Note: Mapped drought areas are from the U.S. Drought Monitor product and do not depict the intensity of drought in any particular location.

Note: Counties shaded in gray contain data that were not published by NASS, and thus were not used in delineating major and minor agricultural areas.

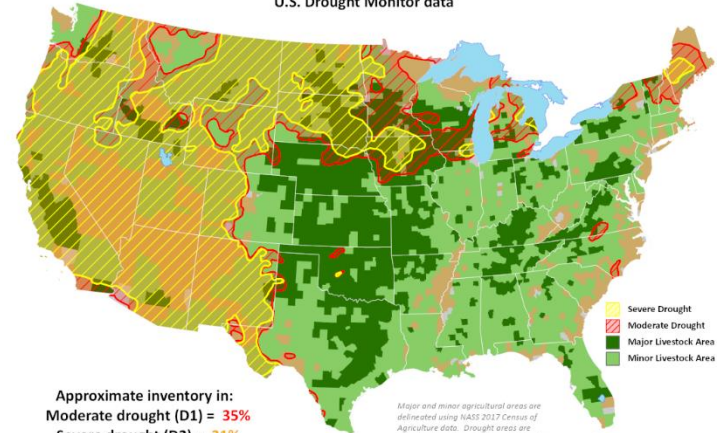
- Major areas combined account for approximately 75% of the total national inventory.
- Major and minor areas combined account for approximately 99% of the total national inventory.
- Major and minor areas are derived from NASS 2017 Census of Agriculture data.

Moderate Drought (D1)
Severe Drought (D2)
Major Livestock Area
Minor Livestock Area

Cattle Areas in Drought

Reflects June 29, 2021
U.S. Drought Monitor data

USDA United States Department of Agriculture
This product was prepared by the USDA Office of the Chief Economist (OCE) World Agricultural Outlook Board (WAOB)



Approximate inventory in:
Moderate drought (D1) = 35%
Severe drought (D2) = 21%

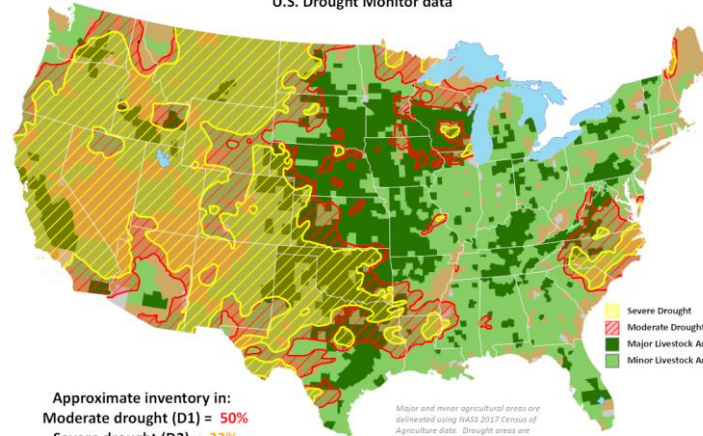
Major and minor agricultural areas are delineated using NASS 2017 Census of Agriculture data. Drought areas are identified using the U.S. Drought Monitor product.

Severe Drought
Moderate Drought
Major Livestock Area
Minor Livestock Area

Cattle Areas in Drought

Reflects December 28, 2021
U.S. Drought Monitor data

USDA United States Department of Agriculture
This product was prepared by the USDA Office of the Chief Economist (OCE) World Agricultural Outlook Board (WAOB)



Approximate inventory in:
Moderate drought (D1) = 50%
Severe drought (D2) = 33%

Major and minor agricultural areas are delineated using NASS 2017 Census of Agriculture data. Drought areas are identified using the U.S. Drought Monitor product.

Severe Drought
Moderate Drought
Major Livestock Area
Minor Livestock Area



U.S. Cattle and Calves Revisions



Survey	Item	Initial Estimate (1,000 head)	Current Revision (1,000 head)	Net Revision (1,000 head)	Current Estimate (1,000 head)
July 1, 2020	All cattle and calves	103,000.0	+100.0	-700.0	102,300.0
	Calf crop	35,800.0	+360.0	-304.5	35,495.5
January 1, 2021	All cattle and calves	93,594.5	+195.0	+195.0	93,789.5
	Calf crop	35,135.5	+360.0	+360.0	35,495.5
July 1, 2021	All cattle and calves	100,900.0	-100.0	-100.0	100,800.0
	Calf crop	35,100.0	-14.6	-14.6	35,085.4



January 1 Cattle and Calves

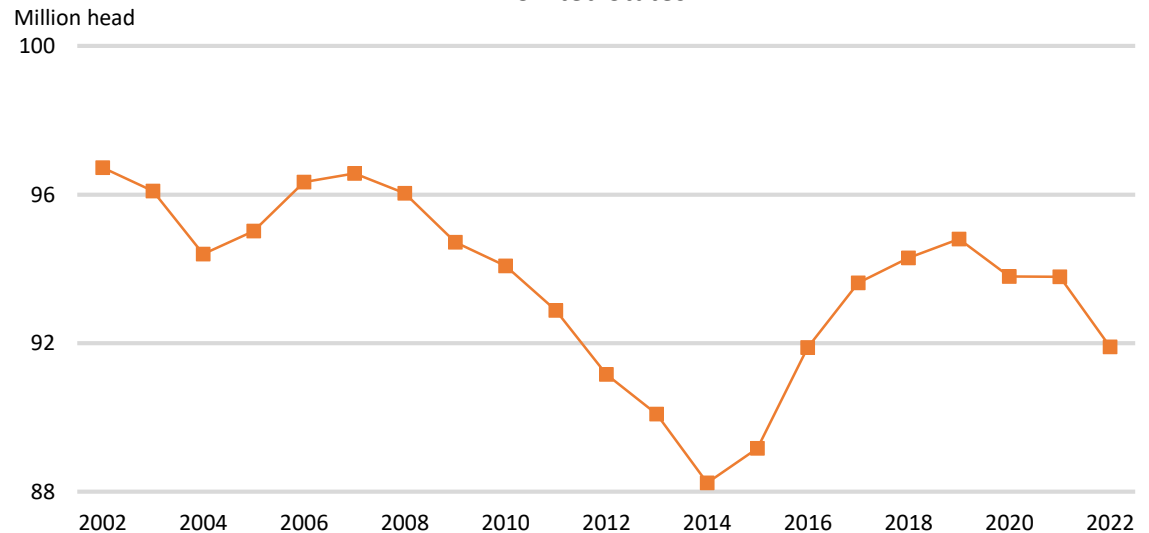


United States	2021	2022	% Change from Previous Year	
	(1,000 head)			
All cattle and calves	93,789.5	91,901.6	↓	2.0

Top 5 States Inventory
(1,000 head)

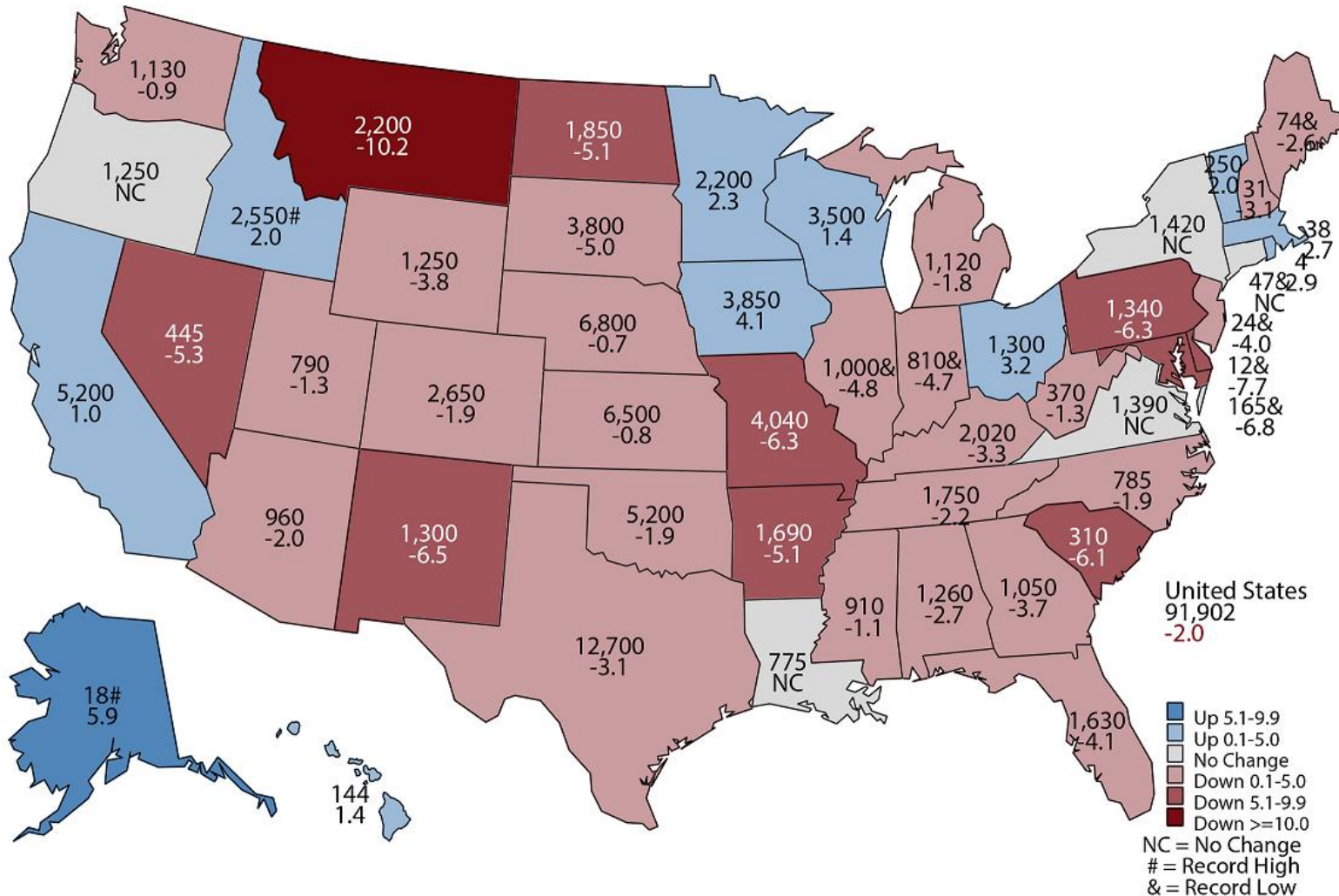
Texas	12,700
Nebraska	6,800
Kansas	6,500
California	5,200
Oklahoma	5,200

January 1 All Cattle and Calves
United States



January 1, 2022 Cattle and Calves

(1,000) Head and Percent Change from Previous Year

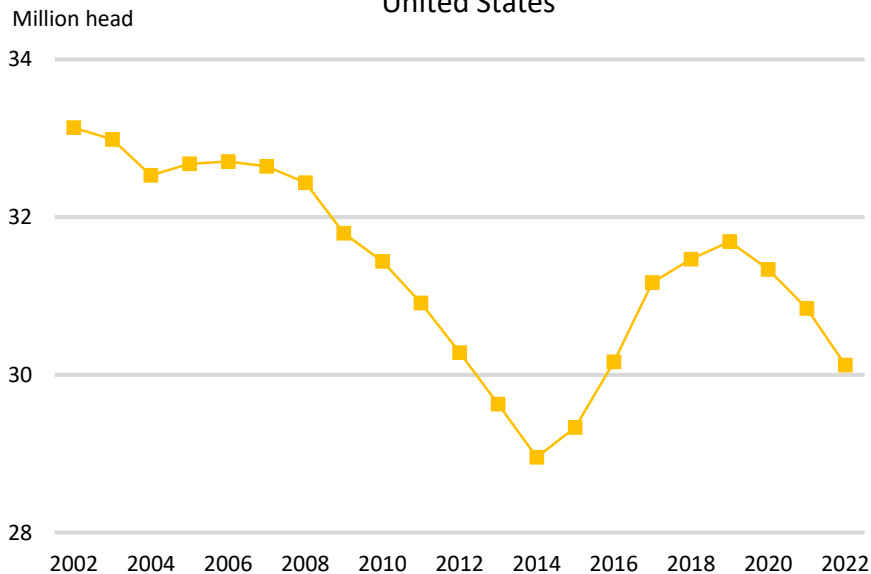


United States

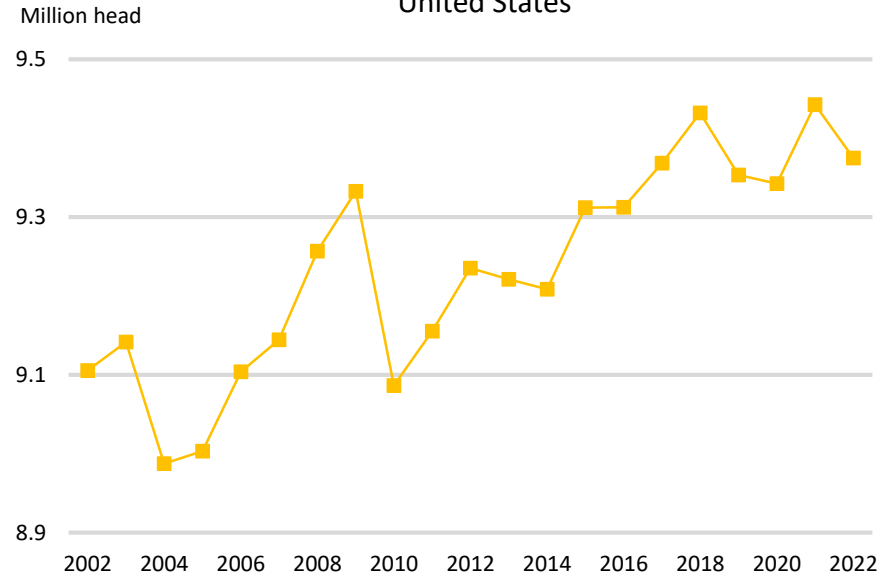
All cows and heifers that have calved
 Beef cows
 Milk cows

2021 (1,000 head)	2022	% Change from Previous Year	
40,286.0	39,500.1	↓	2.0
30,843.6	30,125.1	↓	2.3
9,442.4	9,375.0	↓	0.7

January 1 Beef Cows
United States

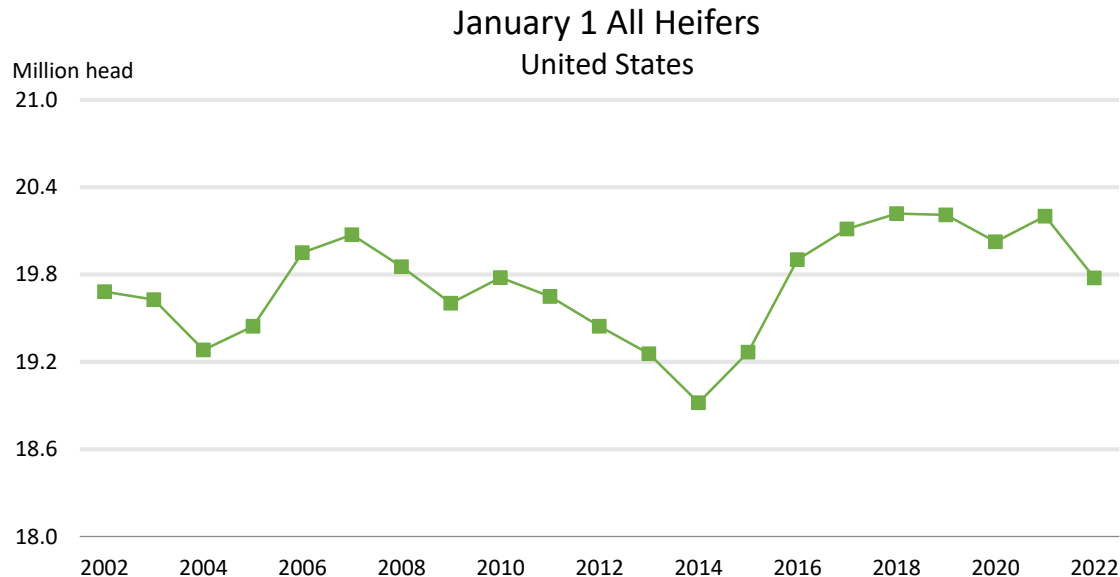


January 1 Milk Cows
United States



January 1 Heifers

United States	2021	2022	% Change from Previous Year	
	(1,000 head)			
All heifers 500 pounds and over	20,200.1	19,776.0	↓	2.1
Beef cow replacement	5,803.1	5,611.5	↓	3.3
Milk cow replacement	4,608.5	4,450.6	↓	3.4
Other heifers	9,788.5	9,713.9	↓	0.8



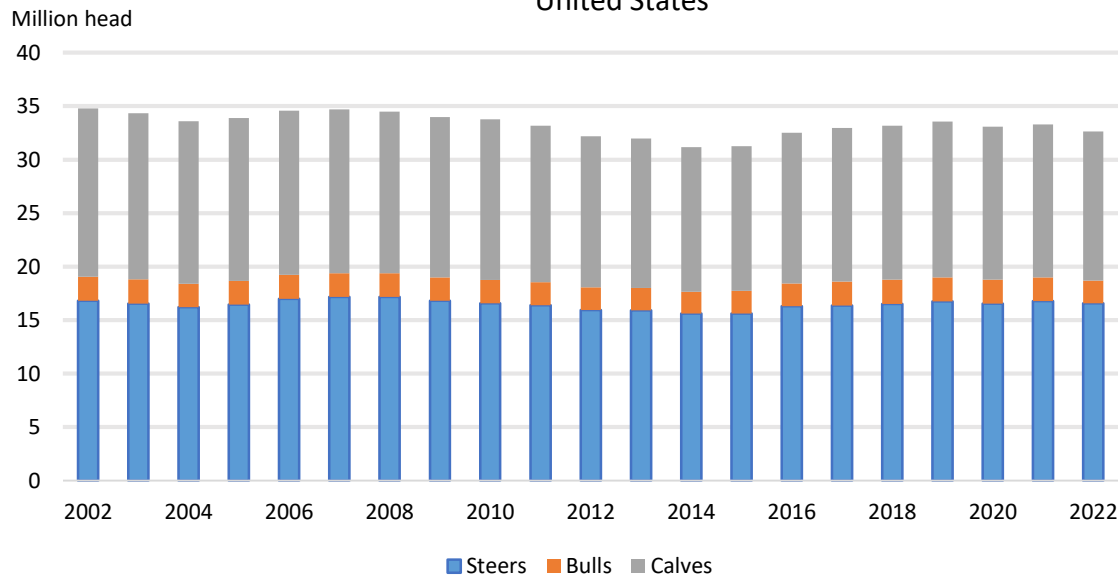


January 1 Steers, Bulls, and Calves

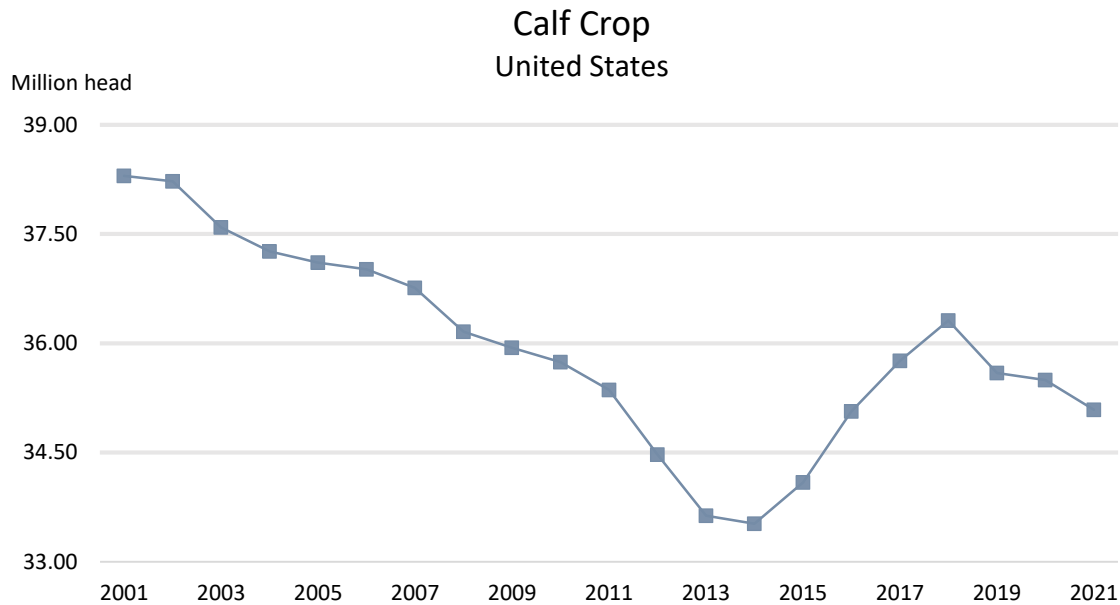


United States	2021 (1,000 head)	2022	% Change from Previous Year	
Steers 500 pounds and over	16,787.8	16,579.7	↓	1.2
Bulls 500 pounds and over	2,210.5	2,109.6	↓	4.6
Calves under 500 pounds	14,305.1	13,936.2	↓	2.6

January 1 Steers, Bulls, and Calves
United States

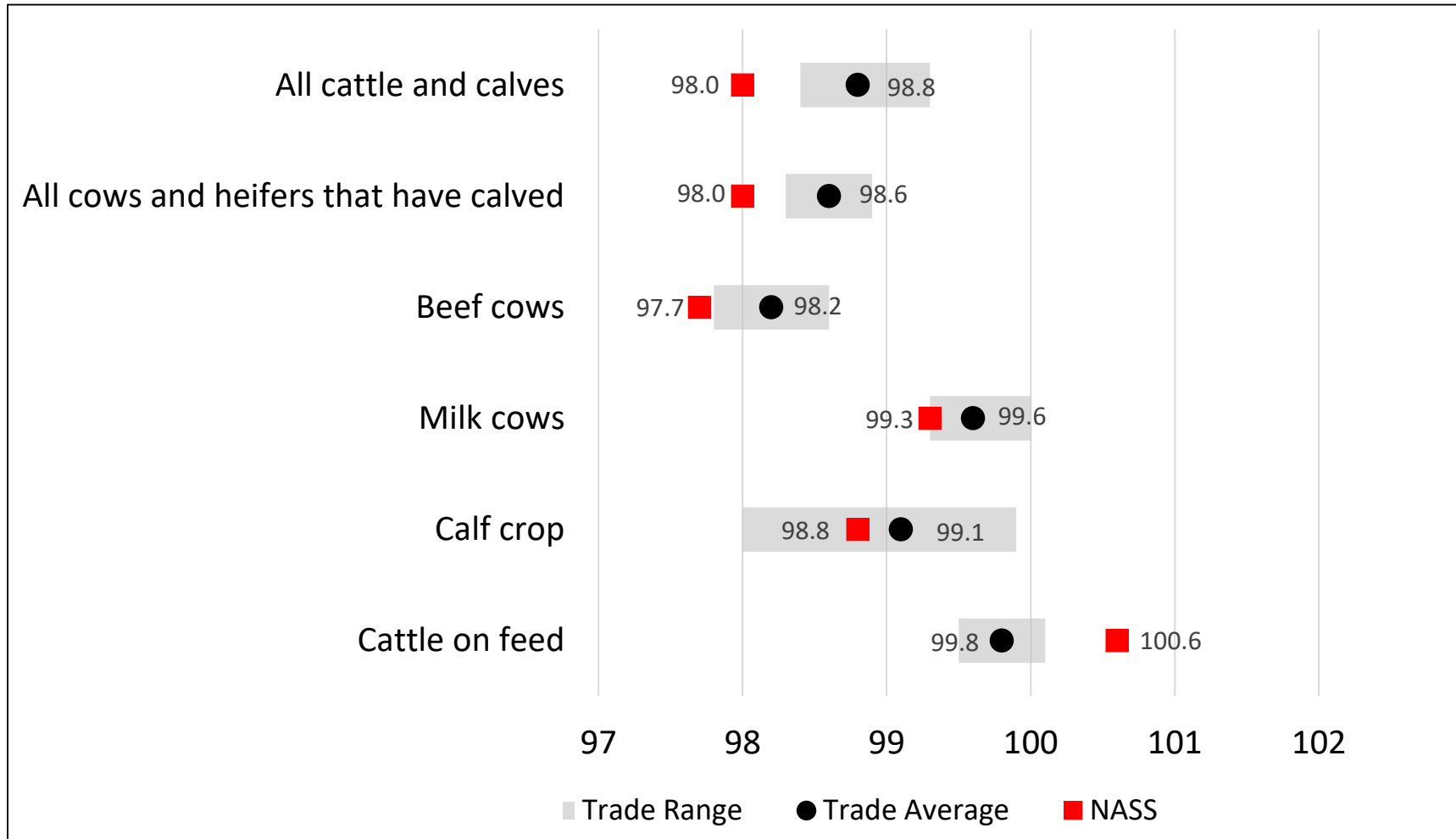


United States	2020 (1,000 head)	2021	% Change from Previous Year	
January 1 – June 30	25,850.0	25,630.0	↓	0.9
July 1 – December 31	9,645.5	9,455.4	↓	2.0
Total	35,495.5	35,085.4	↓	1.2



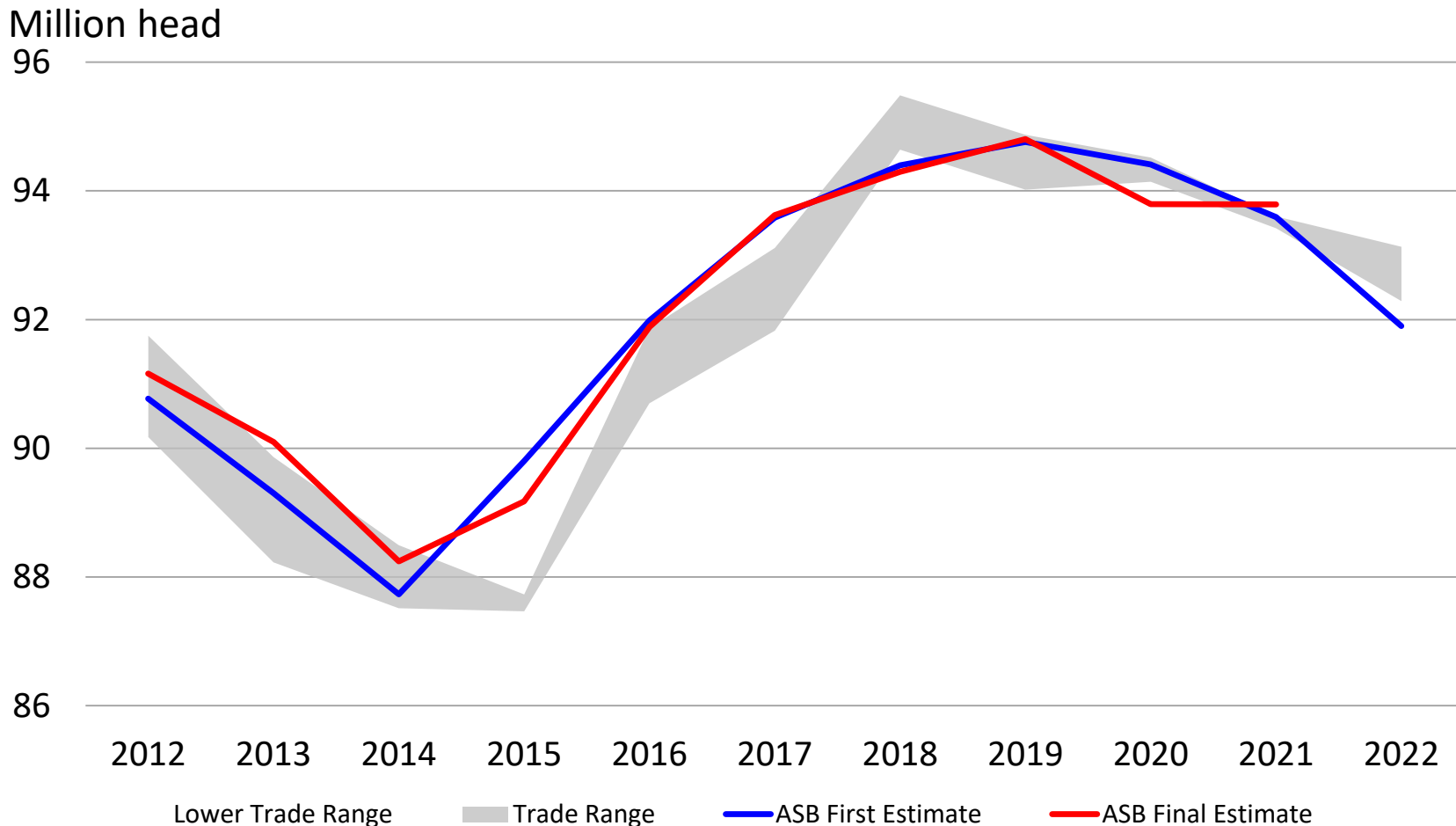


Trade Expectations Compared to NASS Estimates Percent of Previous Year





All Cattle and Calves First Estimate vs Final Estimate

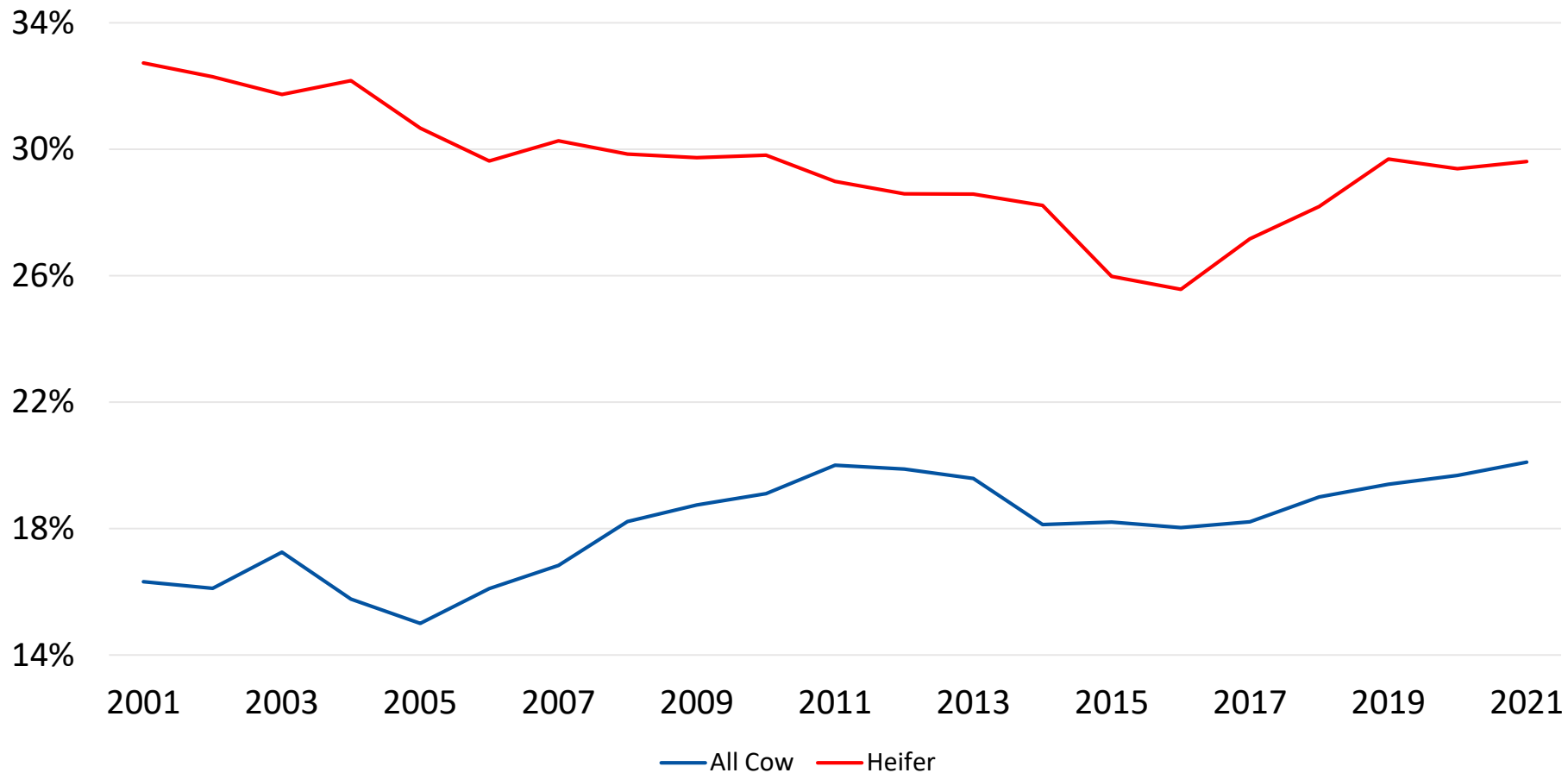




All Cow and Heifer Slaughter as a Percent of Total Slaughter

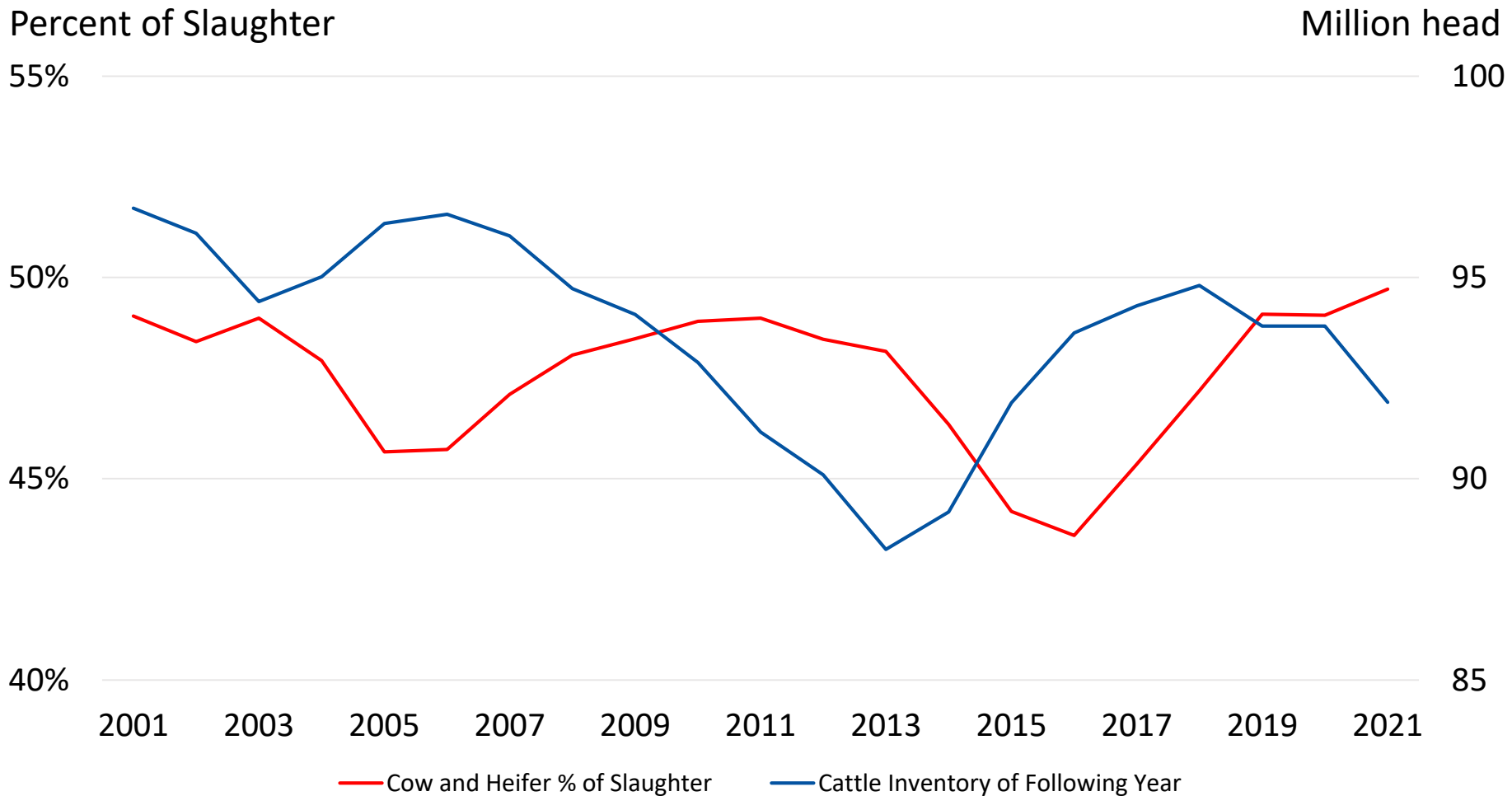


Percent of Slaughter





Cattle Inventory vs Cow and Heifer Slaughter as a Percent of Slaughter

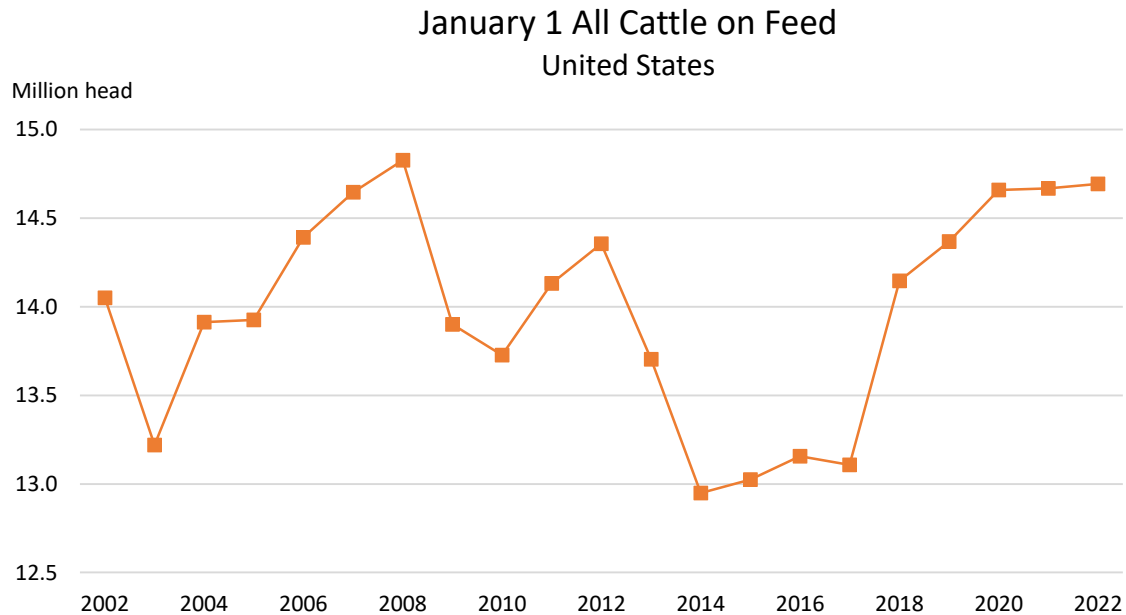




January 1 Cattle on Feed



United States	2021		2022	
	(1,000 head)	Percent of Total	(1,000 head)	Percent of Total
Capacity of 1,000 head or more	11,967.0	81.6	12,037.0	81.9
Capacity of less than 1,000 head	2,700.4	18.4	2,655.6	18.1
All cattle on feed	14,667.4		14,692.6	

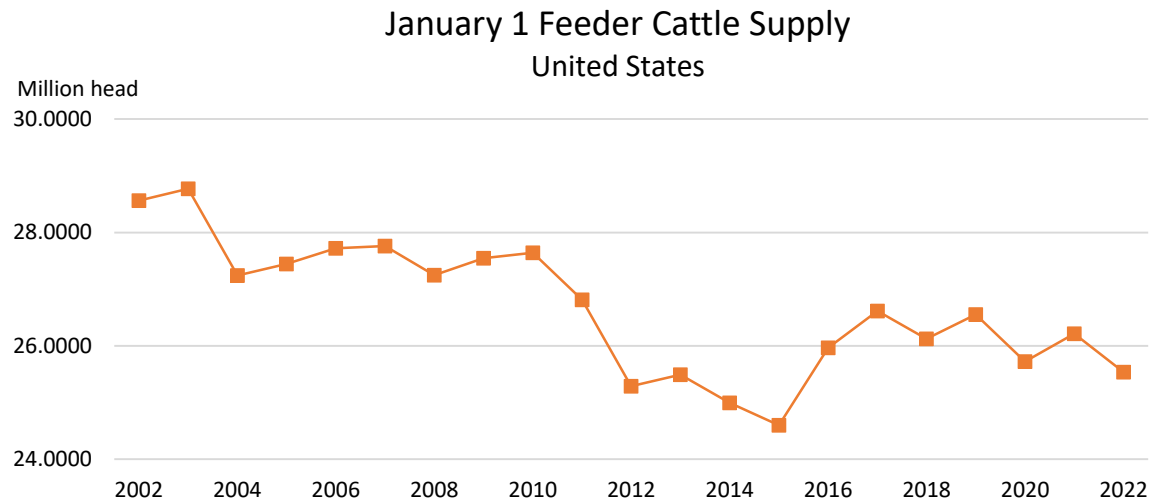




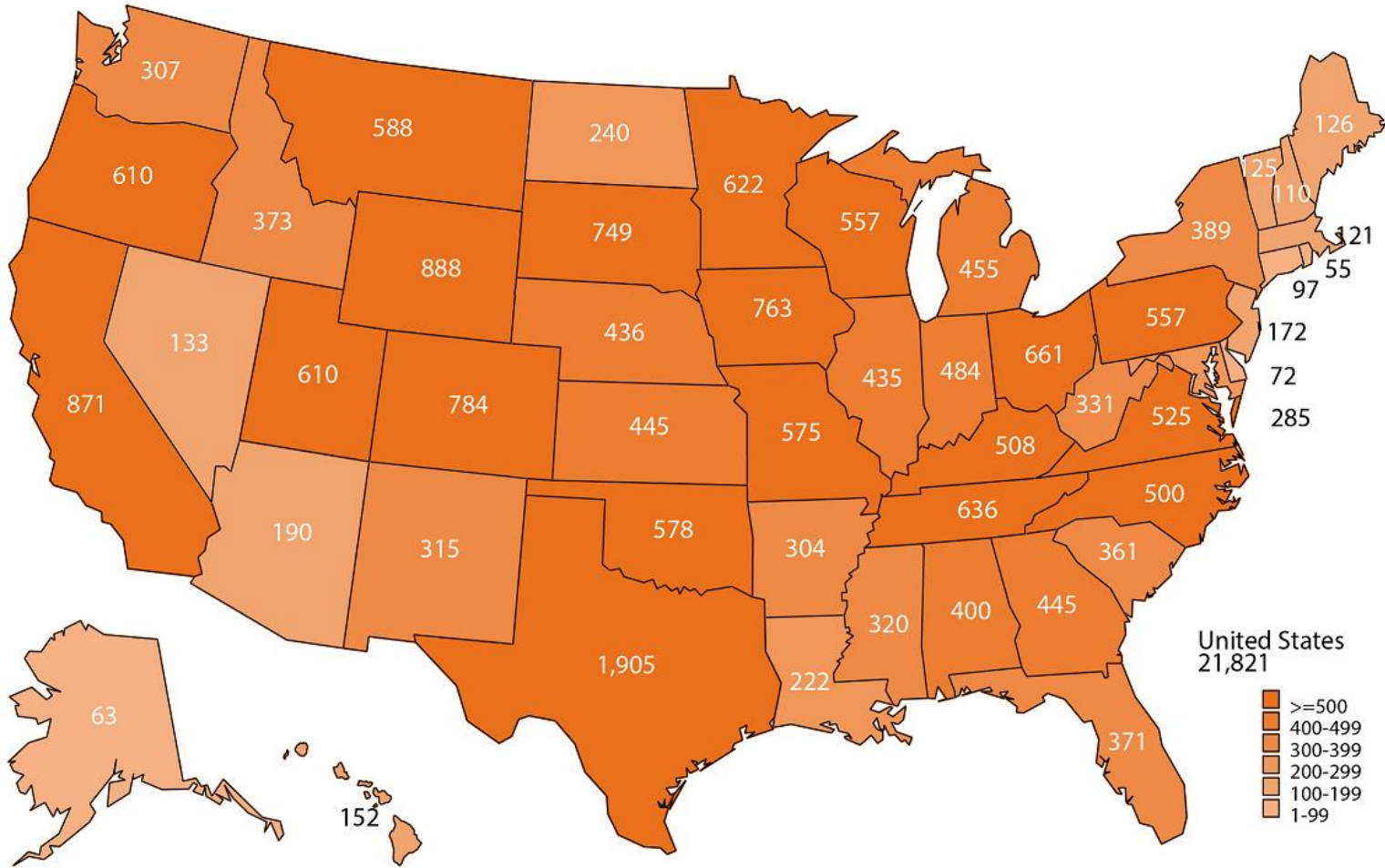
January 1 Feeder Cattle Supply



United States	2021 (1,000 head)	2022	% Change from Previous Year	
Calves under 500 pounds	14,305.1	13,936.2	↓	2.6
Steers and other heifers 500 pounds and over	26,576.3	26,293.6	↓	1.1
Total supply	40,881.4	40,229.8	↓	1.6
All cattle on feed	14,667.4	14,692.6	↑	0.2
Feeder cattle supply	26,214.0	25,537.2	↓	2.6



January 2022 Sheep and Goat Survey Sample Sizes





U.S. Sheep and Lambs Revisions



Survey	Item	Initial Estimate (1,000 head)	Current Revision (1,000 head)	Net Revision (1,000 head)	Current Estimate (1,000 head)
January 1, 2021	All sheep and lambs	5,170.0	0	0	5,170.0
	Lamb crop	3,210.0	0	0	3,210.0



January 1 Sheep and Lambs

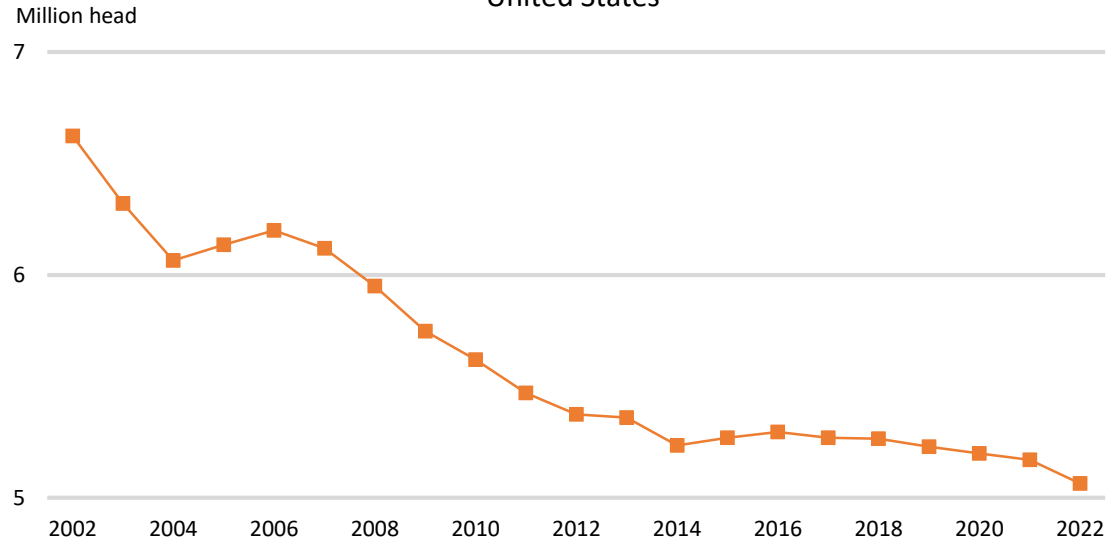


United States	2021 (1,000 head)	2022	% Change from Previous Year	
All sheep and lambs	5,170.0	5,065.0	↓	2.0
Market	1,390.0	1,355.0	↓	2.5
Breeding	3,780.0	3,710.0	↓	1.9

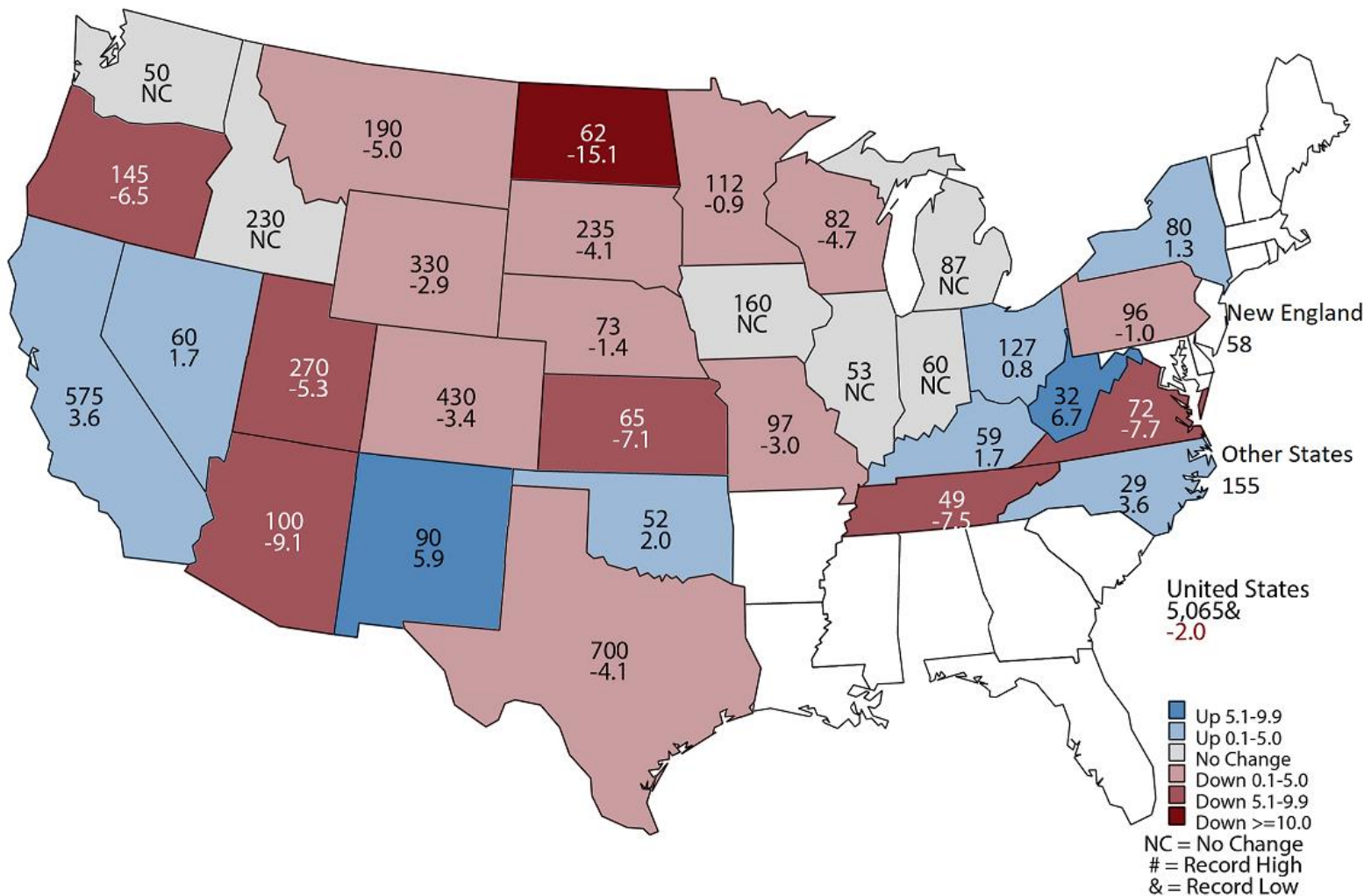
**Top 5 States
Inventory**
(1,000 head)

Texas	700
California	575
Colorado	430
Wyoming	330
Utah	270

January 1 All Sheep and Lambs
United States

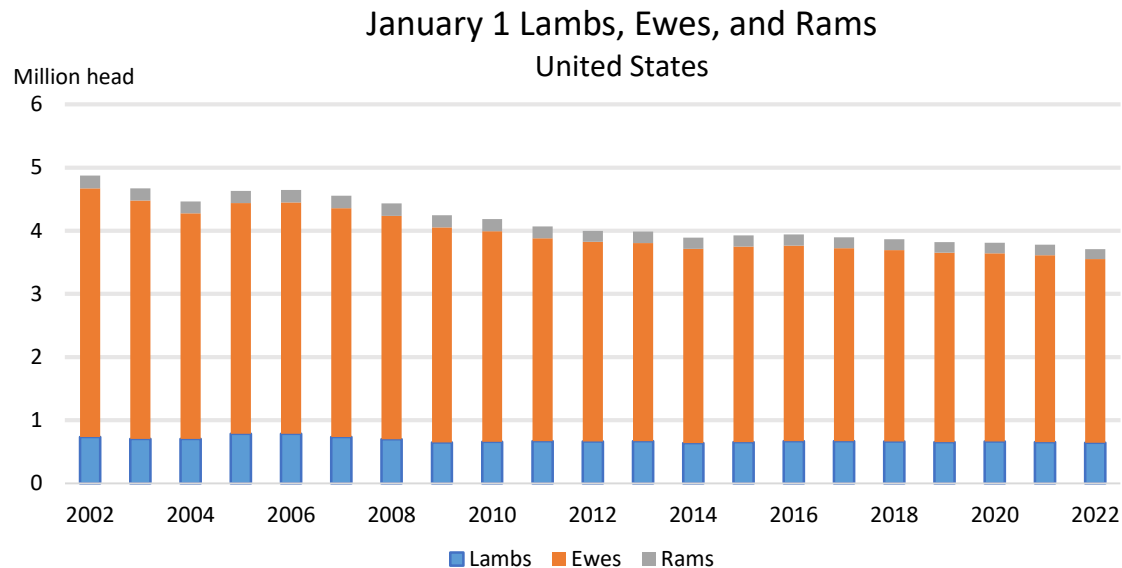


January 1, 2022 Sheep and Lambs (1,000) Head and Percent Change from Previous Year



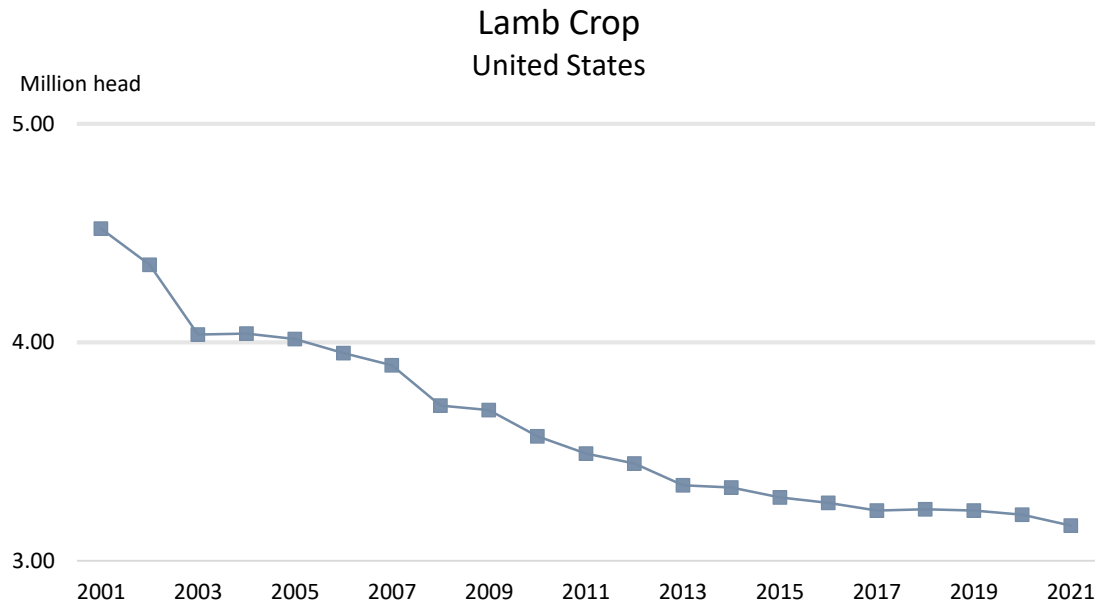
January 1 Breeding Sheep and Lambs

United States	2021 (1,000 head)	2022	% Change from Previous Year	
Breeding sheep and lambs	3,780.0	3,710.0	↓	1.9
Replacement lambs under one year old	650.0	640.0	↓	1.5
Ewes one year and older	2,960.0	2,910.0	↓	1.7
Rams one year old and older	170.0	160.0	↓	5.9



Lamb Crop

United States	2020	2021	% Change from Previous Year
	(1,000 head)		
Lamb crop	3,210.0	3,160.0	↓ 1.6





U.S. Goats and Kids Revisions

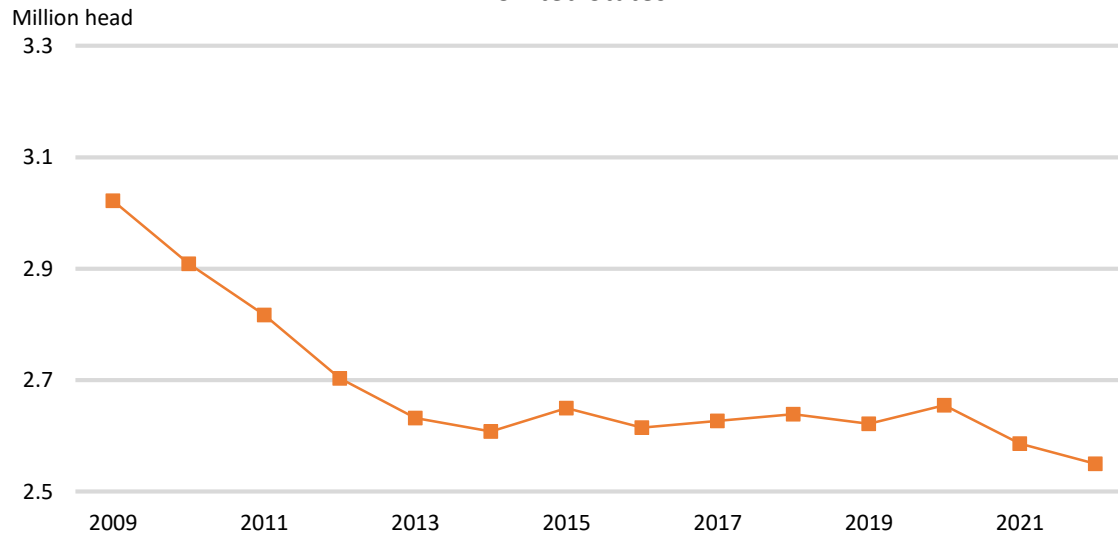


Survey	Item	Initial Estimate (1,000 head)	Current Revision (1,000 head)	Net Revision (1,000 head)	Current Estimate (1,000 head)
January 1, 2021	All goats and kids	2,582	+4	+4	2,586
	Kid crop	1,655	0	0	1,655

January 1 Goats and Kids

United States	2022 (1,000 head)	2021	% Change from Previous Year	
All goats and kids	2,586	2,550	↓	1.4
Market	466	457	↓	1.9
Breeding	2,120	2,093	↓	1.3

January 1 All Goats and Kids
United States



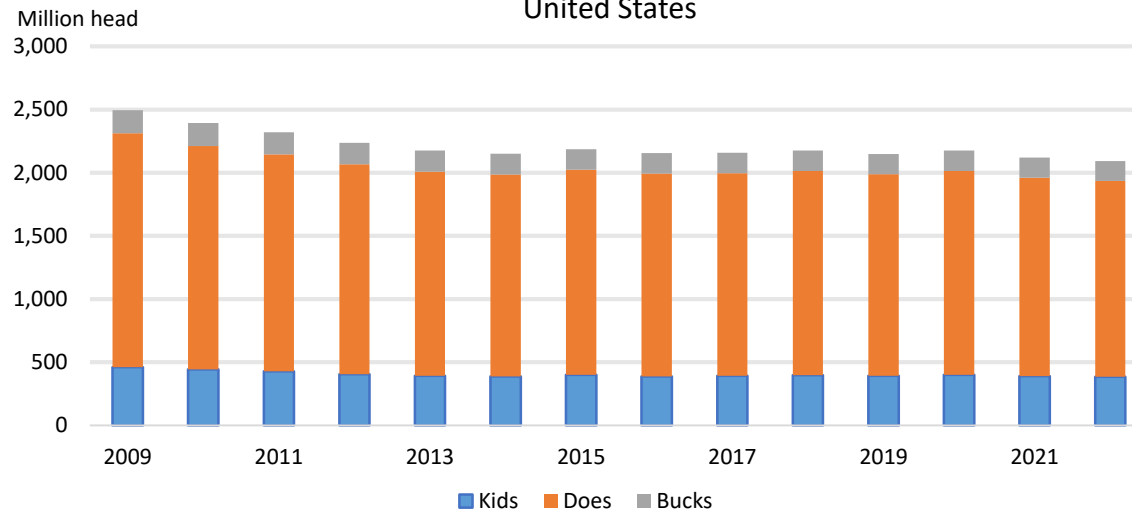


January 1 Breeding Goats and Kids



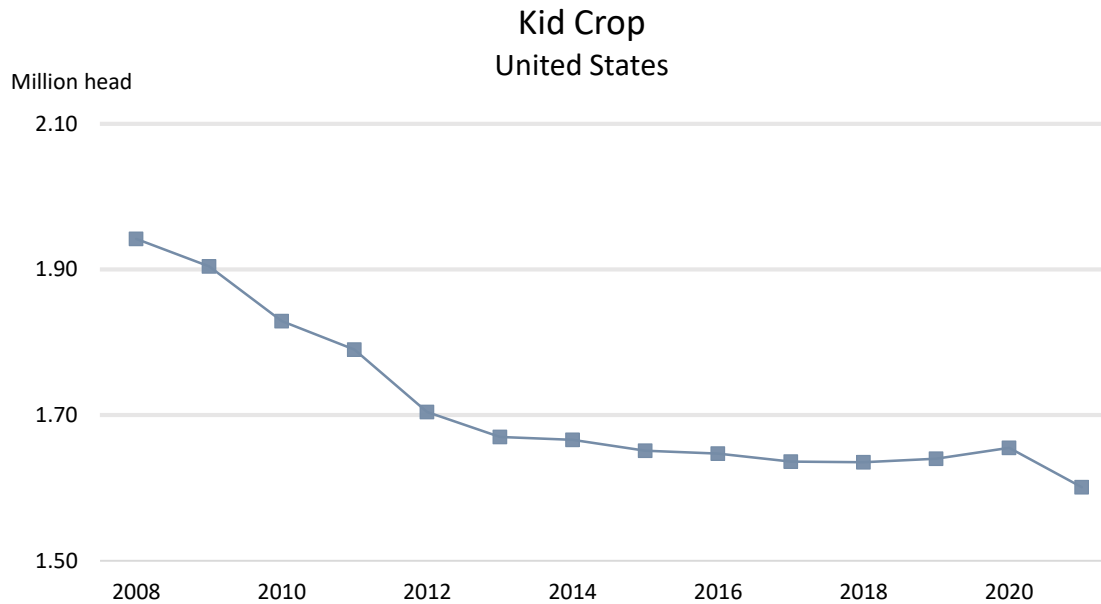
United States	2021 (1,000 head)	2022	% Change from Previous Year	
Breeding goats and kids	2,120	2,093	↓	1.3
Replacement kids under one year old	389	385	↓	1.0
Does one year old and older	1,572	1,551	↓	1.3
Bucks one year old and older	159	157	↓	1.3

January 1 Kids, Does, and Bucks
United States



Kid Crop

United States	2020	2021	% Change from Previous Year
	(1,000 head)		
Kid crop	1,655	1,601	↓ 3.3





Highlight of Upcoming Reports



February 11	Catfish Production
February 16	Vegetables Annual Summary
February 18	Farms and Land in Farms
February 24	Crop Values Annual Summary
March 3	U.S. and Canadian Cattle and Sheep; U.S. and Canadian Hogs

<https://www.nass.usda.gov/Publications/index.php>

STAT CHAT SERIES

@usda_nass

#STATCHAT

Join Livestock Branch Chief Travis Averill on Twitter using #StatChat to ask questions about the January *Cattle* report.

MONDAY,
JAN. 31
4PM ET





United States Department of Agriculture

Registration is Now Open

USDA's 98th Annual
**Agricultural
Outlook Forum**
February 24-25, 2022



Registration is Now Open to USDA's 98th Agricultural Outlook Forum!

New Paths to Sustainability Growth

Join us for this virtual event on February 24-25, 2022

The Forum is free to attend

[Register Today](#)



All Reports Available At

www.nass.usda.gov

For Questions

(202) 720-3570

(800) 727-9540

nass@usda.gov