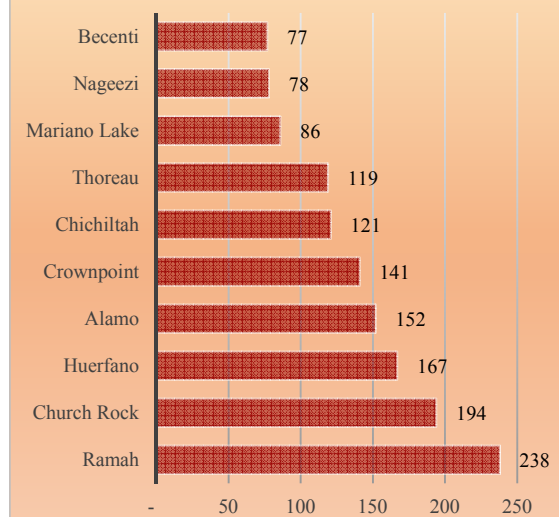


## Pinedale Chapter

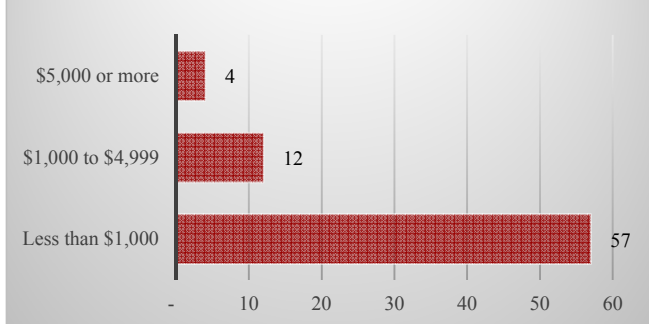
### Total and Per Farm Overview

	2017	% of Eastern Agency
Number of Farms and Ranches	73	3.0
<b>Total</b>		
	(\$)	
Market value of products sold	74,700	2.1
Crop sales	12,200	2.4
Livestock sales	62,500	2.0
Farm production expenses	504,600	3.4
<b>Per farm average</b>		
	(\$)	
Market value of products sold	1,024	
<b>Share of Sales by Type</b>		
	(%)	
Crop sales	16.3	
Livestock sales	83.7	

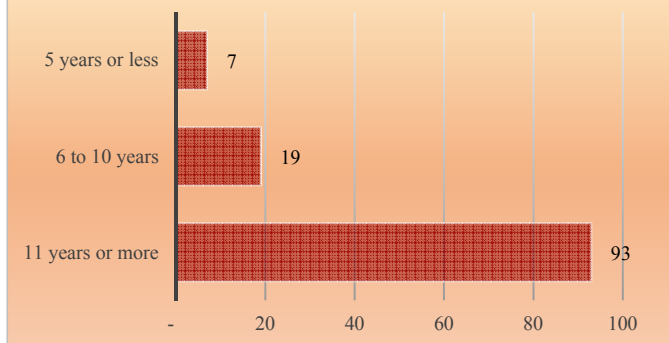
Number of Farms and Ranches, Selected Chapters, Eastern Agency



Farms and Ranches by Value of Sales



Years on Any Farm



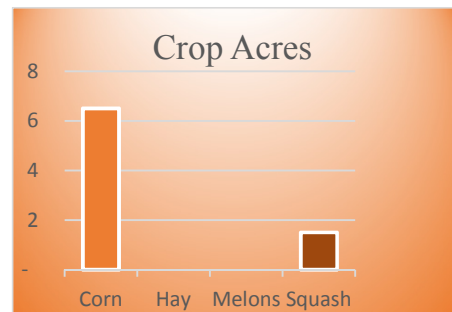
# Pinedale Chapter

## Livestock and Crop Totals

	Farms	Inventory	% of Eastern Agency
<b>Livestock</b>			
Cattle and calves	35	364	2.8
Beef cows	22	122	1.8
Sheep and lambs	53	947	3.9
Horses and ponies	46	135	2.7
Goats	33	334	4.3



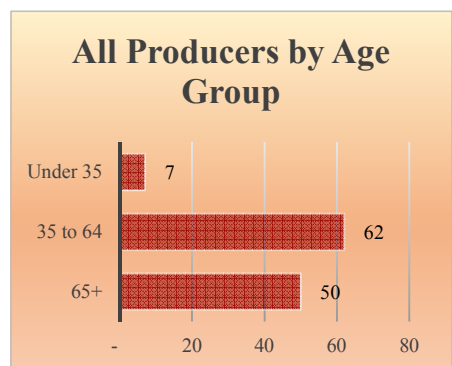
	Farms	Acres	% of Eastern Agency
<b>Crops</b>			
Corn, traditional, acres	6	7	1.6
Hay and haylage, acres	-	-	-
Vegetables, acres	5	(D)	(D)
Cantaloupes, acres	-	-	-
Honeydew melons, acres	-	-	-
Squash, all, acres	3	2	1.4
Watermelons, acres	-	-	-



<b>Total Producers<sup>a</sup></b>	<b>119</b>
<i>Average age (years)</i>	<i>60.5</i>

<b>Sex</b>	
Female	58
Male	61

<b>Other characteristics</b>	
With military service	13
New and beginning farmers	26
Young Producers	7



See 2017 Census of Agriculture, U.S. Summary and State Data, for complete footnotes, explanations, definitions, commodity descriptions, and methodology. <sup>a</sup> Data collected for a maximum of four producers per farm. (D) Withheld to avoid disclosing data for individual operations. (NA) Not available. (-) Represents zero.