



California Farms with American Indian or Alaska Native Producers^a

Total and Per Farm Overview, 2017

	Farms with American Indian/Alaska Native Producers	All Farms
Number of farms	2,153	70,521
Land in farms (acres)	613,724	24,522,801
Average size of farm (acres)	285	348
Total	(\$)	(\$)
Market value of products sold	505,627,000	45,154,359,000
Government payments	5,117,000	127,938,000
Farm-related income	14,480,000	1,404,033,000
Total farm production expenses	452,216,000	37,775,929,000
Net cash farm income	73,009,000	8,910,399,000
Per farm average	(\$)	(\$)
Market value of products sold	234,848	640,297
Government payments (average per farm receiving)	44,494	24,112
Farm-related income	27,687	66,671
Total farm production expenses	210,040	535,669
Net cash farm income	33,910	126,351

Share of Sales by Type (%)

Crops	83
Livestock, poultry, and products	17

Land in Farms by Use (%) ^b

Cropland	23
Pastureland	41
Woodland	27
Other	9

Land Use Practices (% of farms)

No till	6
Reduced till	3
Intensive till	8
Cover crop	7

Farms by Value of Sales

	Number	Percent ^b
Less than \$2,500	791	37
\$2,500 to \$4,999	234	11
\$5,000 to \$9,999	275	13
\$10,000 to \$24,999	260	12
\$25,000 to \$49,999	129	6
\$50,000 to \$99,999	147	7
\$100,000 or more	317	15
Total	2,153	100

Farms by Size

	Number	Percent ^b
1 to 9 acres	789	37
10 to 49 acres	741	34
50 to 179 acres	301	14
180 to 499 acres	139	6
500 to 999 acres	79	4
1,000 + acres	104	5
Total	2,153	100

2017 CENSUS OF AGRICULTURE Race/Ethnicity/Gender Profile

Market Value of Agricultural Products Sold		Total Producers ^c		
	Sales (\$1,000)	No. of Farms		
Total	505,627	2,153	2,537	
Crops	418,054	1,125	Sex	
Grains, oilseeds, dry beans, dry peas	15,459	51	Male	1,539
Tobacco	-	-	Female	998
Cotton and cottonseed	15,945	6	Age	
Vegetables, melons, potatoes, sweet potatoes	55,328	163	<35	204
Fruits, tree nuts, berries	278,144	785	35 – 64	1,567
Nursery, greenhouse, floriculture, sod	35,618	123	65 and older	766
Cultivated Christmas trees, short rotation woody crops	34	5	Primary occupation	
Other crops and hay	17,526	155	Farming	1,183
			Other	1,354
Livestock, poultry, and products	87,573	786	Days worked off farm	
Poultry and eggs	154	208	None	886
Cattle and calves	43,613	363	1 to 199	647
Milk from cows	27,847	11	200 +	1,004
Hogs and pigs	123	88	Other characteristics	
Sheep, goats, wool, mohair, milk	13,101	186	Hispanic/Latino/Spanish	696
Horses, ponies, mules, burros, donkeys	1,012	101	With military service	299
Aquaculture	(D)	2	New and beginning farmers	735
Other animals and animal products	(D)	92	Average age (years)	57.2
Top Crops in Acres ^d		Percent of farms that:		
Forage (hay/haylage), all	28,728	Have internet access	82	Demographic Data in the Census of Agriculture
Almonds	(D)	Farm organically	5	
Vegetables harvested, all	10,183	Sell directly to consumers	14	
Grapes	8,729	Hire farm labor	31	
Rice	8,464	Are family farms	95	
Livestock Inventory (Dec 31, 2017)				The agriculture census is a complete count of U.S. farms and ranches and the people who operate them. Demographic information is available at national, state, and county levels, and for classes of farm and congressional districts. Results from the 2017 Census and earlier are available through the searchable database Quick Stats, the new Census Data Query Tool, downloadable PDF reports, maps, and topic-specific Highlights and Profiles. See also the video "What's New in the 2017 Census?" (www.nass.usda.gov/Newsroom/VideoFeatures/index.php).
Broilers and other meat-type chickens	1,483			
Cattle and calves	61,265			
Goats	12,321			
Hogs and pigs	934			
Horses and ponies	3,649			
Layers	(D)			
Pullets	791			
Sheep and lambs	37,471			
Turkeys	551			

See 2017 Census of Agriculture, U.S. Summary and State Data, for complete footnotes, explanations, definitions, commodity descriptions, and methodology.

^a This race alone or in combination with other races. ^b May not add to 100% due to rounding. ^c Data collected for a maximum of four producers per farm.

^d Crop commodity names may be shortened; see full names at www.nass.usda.gov/go/cropnames.pdf. ^e Position below the line does not indicate rank.

(D) Withheld to avoid disclosing data for individual operations. (NA) Not available. (Z) Less than half of the unit shown. (-) Represents zero.



California Farms with Asian Producers^a

Total and Per Farm Overview, 2017

	Farms with Asian Producers	All Farms
Number of farms	4,649	70,521
Land in farms (acres)	778,695	24,522,801
Average size of farm (acres)	167	348
Total	(\$)	(\$)
Market value of products sold	3,244,130,000	45,154,359,000
Government payments	6,766,000	127,938,000
Farm-related income	85,878,000	1,404,033,000
Total farm production expenses	2,659,631,000	37,775,929,000
Net cash farm income	677,142,000	8,910,399,000
Per farm average	(\$)	(\$)
Market value of products sold	697,812	640,297
Government payments (average per farm receiving)	34,695	24,112
Farm-related income	54,491	66,671
Total farm production expenses	572,087	535,669
Net cash farm income	145,653	126,351

Share of Sales by Type (%)

Crops	97
Livestock, poultry, and products	3

Land in Farms by Use (%) ^b

Cropland	76
Pastureland	12
Woodland	5
Other	7

Land Use Practices (% of farms)

No till	9
Reduced till	6
Intensive till	13
Cover crop	8

Farms by Value of Sales

	Number	Percent ^b
Less than \$2,500	715	15
\$2,500 to \$4,999	208	4
\$5,000 to \$9,999	360	8
\$10,000 to \$24,999	496	11
\$25,000 to \$49,999	377	8
\$50,000 to \$99,999	489	11
\$100,000 or more	2,004	43
Total	4,649	100

Farms by Size

	Number	Percent ^b
1 to 9 acres	1,267	27
10 to 49 acres	1,624	35
50 to 179 acres	1,028	22
180 to 499 acres	454	10
500 to 999 acres	142	3
1,000 + acres	134	3
Total	4,649	100

2017 CENSUS OF AGRICULTURE Race/Ethnicity/Gender Profile

Market Value of Agricultural Products Sold		Total Producers ^c		
	Sales (\$1,000)	No. of Farms		
Total	3,244,130	4,649	7,038	
Crops	3,154,247	3,983	Sex	
Grains, oilseeds, dry beans, dry peas	37,707	96	Male	4,642
Tobacco	-	-	Female	2,396
Cotton and cottonseed	(D)	4	Age	
Vegetables, melons, potatoes, sweet potatoes	575,623	729	<35	539
Fruits, tree nuts, berries	1,961,786	3,071	35 – 64	4,602
Nursery, greenhouse, floriculture, sod	562,345	415	65 and older	1,897
Cultivated Christmas trees, short rotation woody crops	(D)	5	Primary occupation	
Other crops and hay	11,583	125	Farming	3,540
			Other	3,498
Livestock, poultry, and products	89,883	433	Days worked off farm	
Poultry and eggs	32,514	163	None	2,451
Cattle and calves	10,462	117	1 to 199	2,015
Milk from cows	26,157	6	200 +	2,572
Hogs and pigs	94	26	Other characteristics	
Sheep, goats, wool, mohair, milk	2,163	104	Hispanic/Latino/Spanish	546
Horses, ponies, mules, burros, donkeys	691	26	With military service	293
Aquaculture	16,087	16	New and beginning farmers	2,325
Other animals and animal products	1,714	71	<i>Average age (years)</i>	<i>56.4</i>
Top Crops in Acres ^d		Percent of farms that:		
Almonds	160,821	Have internet access	73	Demographic Data in the Census of Agriculture
Grapes	90,243	Farm organically	5	
Vegetables harvested, all	63,480	Sell directly to consumers	13	
Pistachios	37,876	Hire farm labor	57	
Walnuts, English	37,163	Are family farms	90	The agriculture census is a complete count of U.S. farms and ranches and the people who operate them. Demographic information is available at national, state, and county levels, and for classes of farm and congressional districts. Results from the 2017 Census and earlier are available through the searchable database Quick Stats, the new Census Data Query Tool, downloadable PDF reports, maps, and topic-specific Highlights and Profiles. See also the video "What's New in the 2017 Census?" (www.nass.usda.gov/Newsroom/VideoFeatures/index.php).
Livestock Inventory (Dec 31, 2017)				
Broilers and other meat-type chickens	24,952			
Cattle and calves	28,260			
Goats	8,654			
Hogs and pigs	(D)			
Horses and ponies	1,538			
Layers	(D)			
Pullets	1,143			
Sheep and lambs	23,895			
Turkeys	(D)			

See 2017 Census of Agriculture, U.S. Summary and State Data, for complete footnotes, explanations, definitions, commodity descriptions, and methodology.

^a This race alone or in combination with other races. ^b May not add to 100% due to rounding. ^c Data collected for a maximum of four producers per farm.

^d Crop commodity names may be shortened; see full names at www.nass.usda.gov/go/cropnames.pdf. ^e Position below the line does not indicate rank.

(D) Withheld to avoid disclosing data for individual operations. (NA) Not available. (Z) Less than half of the unit shown. (-) Represents zero.



California Farms with Black or African American Producers^a

Total and Per Farm Overview, 2017

	Farms with Black/African American Producers	All Farms
Number of farms	599	70,521
Land in farms (acres)	120,264	24,522,801
Average size of farm (acres)	201	348
Total	(\$)	(\$)
Market value of products sold	180,797,000	45,154,359,000
Government payments	521,000	127,938,000
Farm-related income	7,298,000	1,404,033,000
Total farm production expenses	156,076,000	37,775,929,000
Net cash farm income	32,539,000	8,910,399,000
Per farm average	(\$)	(\$)
Market value of products sold	301,831	640,297
Government payments (average per farm receiving)	12,393	24,112
Farm-related income	44,774	66,671
Total farm production expenses	260,561	535,669
Net cash farm income	54,323	126,351

Share of Sales by Type (%)

Crops	88
Livestock, poultry, and products	12

Land in Farms by Use (%)^b

Cropland	52
Pastureland	34
Woodland	8
Other	6

Land Use Practices (% of farms)

No till	8
Reduced till	4
Intensive till	10
Cover crop	10

Farms by Value of Sales

	Number	Percent ^b
Less than \$2,500	247	41
\$2,500 to \$4,999	29	5
\$5,000 to \$9,999	73	12
\$10,000 to \$24,999	66	11
\$25,000 to \$49,999	46	8
\$50,000 to \$99,999	29	5
\$100,000 or more	109	18
Total	599	100

Farms by Size

	Number	Percent ^b
1 to 9 acres	280	47
10 to 49 acres	171	29
50 to 179 acres	79	13
180 to 499 acres	35	6
500 to 999 acres	12	2
1,000 + acres	22	4
Total	599	100

2017 CENSUS OF AGRICULTURE Race/Ethnicity/Gender Profile

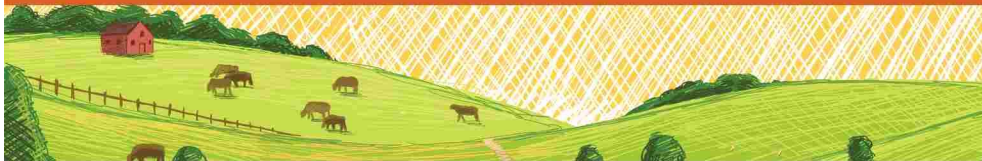
Market Value of Agricultural Products Sold			Total Producers ^c	
	Sales (\$1,000)	No. of Farms		
Total	180,797	599	Sex	724
Crops	159,374	340	Male	477
Grains, oilseeds, dry beans, dry peas	(D)	16	Female	247
Tobacco	-	-	Age	
Cotton and cottonseed	(D)	1	<35	23
Vegetables, melons, potatoes, sweet potatoes	34,279	93	35 – 64	448
Fruits, tree nuts, berries	80,570	225	65 and older	253
Nursery, greenhouse, floriculture, sod	25,850	33	Primary occupation	
Cultivated Christmas trees, short rotation woody crops	-	-	Farming	364
Other crops and hay	11,421	36	Other	360
Livestock, poultry, and products	21,423	179	Days worked off farm	
Poultry and eggs	42	53	None	285
Cattle and calves	3,820	81	1 to 199	150
Milk from cows	(D)	4	200 +	289
Hogs and pigs	(D)	28	Other characteristics	
Sheep, goats, wool, mohair, milk	122	32	Hispanic/Latino/Spanish	130
Horses, ponies, mules, burros, donkeys	79	18	With military service	93
Aquaculture	(D)	2	New and beginning farmers	190
Other animals and animal products	(D)	23	<i>Average age (years)</i>	<i>59.7</i>
Top Crops in Acres ^d	Percent of farms that:		Demographic Data in the Census of Agriculture	
Forage (hay/haylage), all	12,622	Have internet access	81	The agriculture census is a complete count of U.S. farms and ranches and the people who operate them. Demographic information is available at national, state, and county levels, and for classes of farm and congressional districts. Results from the 2017 Census and earlier are available through the searchable database Quick Stats, the new Census Data Query Tool, downloadable PDF reports, maps, and topic-specific Highlights and Profiles. See also the video "What's New in the 2017 Census?" (www.nass.usda.gov/Newsroom/VideoFeatures/index.php).
Almonds	6,847	Farm organically	7	
Corn for grain	(D)	Sell directly to consumers	14	
Pistachios	(D)	Hire farm labor	37	
Walnuts, English	4,214	Are family farms	91	
Livestock Inventory (Dec 31, 2017)				
Broilers and other meat-type chickens	331			
Cattle and calves	18,847			
Goats	792			
Hogs and pigs	845			
Horses and ponies	1,053			
Layers	1,785			
Pullets	254			
Sheep and lambs	1,249			
Turkeys	130			

See 2017 Census of Agriculture, U.S. Summary and State Data, for complete footnotes, explanations, definitions, commodity descriptions, and methodology.

^a This race alone or in combination with other races. ^b May not add to 100% due to rounding. ^c Data collected for a maximum of four producers per farm.

^d Crop commodity names may be shortened; see full names at www.nass.usda.gov/go/cropnames.pdf. ^e Position below the line does not indicate rank.

(D) Withheld to avoid disclosing data for individual operations. (NA) Not available. (Z) Less than half of the unit shown. (-) Represents zero.



California Farms with Native Hawaiian or Other Pacific Islander Producers^a

Total and Per Farm Overview, 2017

	Farms with Native Hawaiian/Pacific Islander Producers	All Farms
Number of farms	568	70,521
Land in farms (acres)	237,163	24,522,801
Average size of farm (acres)	418	348
Total	(\$)	(\$)
Market value of products sold	352,478,000	45,154,359,000
Government payments	2,028,000	127,938,000
Farm-related income	11,922,000	1,404,033,000
Total farm production expenses	299,027,000	37,775,929,000
Net cash farm income	67,401,000	8,910,399,000
Per farm average	(\$)	(\$)
Market value of products sold	620,560	640,297
Government payments (average per farm receiving)	65,415	24,112
Farm-related income	67,738	66,671
Total farm production expenses	526,455	535,669
Net cash farm income	118,664	126,351

Share of Sales by Type (%)

Crops	84
Livestock, poultry, and products	16

Land in Farms by Use (%) ^b

Cropland	47
Pastureland	50
Woodland	1
Other	2

Land Use Practices (% of farms)

No till	7
Reduced till	4
Intensive till	10
Cover crop	6

Farms by Value of Sales

	Number	Percent ^b
Less than \$2,500	166	29
\$2,500 to \$4,999	52	9
\$5,000 to \$9,999	47	8
\$10,000 to \$24,999	76	13
\$25,000 to \$49,999	60	11
\$50,000 to \$99,999	51	9
\$100,000 or more	116	20
Total	568	100

Farms by Size

	Number	Percent ^b
1 to 9 acres	228	40
10 to 49 acres	190	33
50 to 179 acres	70	12
180 to 499 acres	32	6
500 to 999 acres	20	4
1,000 + acres	28	5
Total	568	100

2017 CENSUS OF AGRICULTURE Race/Ethnicity/Gender Profile

Market Value of Agricultural Products Sold		Total Producers ^c	
	Sales (\$1,000)	No. of Farms	
Total	352,478	568	682
Crops	297,365	365	Sex
Grains, oilseeds, dry beans, dry peas	(D)	13	Male 347
Tobacco	-	-	Female 335
Cotton and cottonseed	(D)	2	Age
Vegetables, melons, potatoes, sweet potatoes	52,678	55	<35 62
Fruits, tree nuts, berries	126,221	271	35 – 64 442
Nursery, greenhouse, floriculture, sod	53,673	42	65 and older 178
Cultivated Christmas trees, short rotation woody crops	(D)	2	Primary occupation
Other crops and hay	42,761	39	Farming 273
			Other 409
Livestock, poultry, and products	55,114	144	Days worked off farm
Poultry and eggs	32	37	None 179
Cattle and calves	11,505	78	1 to 199 199
Milk from cows	(D)	8	200 + 304
Hogs and pigs	(D)	1	Other characteristics
Sheep, goats, wool, mohair, milk	62	44	Hispanic/Latino/Spanish 175
Horses, ponies, mules, burros, donkeys	201	6	With military service 54
Aquaculture	-	-	New and beginning farmers 194
Other animals and animal products	(D)	18	<i>Average age (years)</i> 55.9
Top Crops in Acres ^d		Percent of farms that:	
Forage (hay/haylage), all	23,119	Have internet access	78
Field/grass seed crops, all	(D)	Farm organically	5
Grapes	7,632	Sell directly to consumers	12
Rice	(D)	Hire farm labor	42
Corn for grain	(D)	Are family farms	90
Livestock Inventory (Dec 31, 2017)		Demographic Data in the Census of Agriculture	
Broilers and other meat-type chickens	101	The agriculture census is a complete count of U.S. farms and ranches and the people who operate them. Demographic information is available at national, state, and county levels, and for classes of farm and congressional districts. Results from the 2017 Census and earlier are available through the searchable database Quick Stats, the new Census Data Query Tool, downloadable PDF reports, maps, and topic-specific Highlights and Profiles.	
Cattle and calves	21,480	See also the video "What's New in the 2017 Census?" (www.nass.usda.gov/Newsroom/VideoFeatures/index.php).	
Goats	542		
Hogs and pigs	(D)		
Horses and ponies	633		
Layers	824		
Pullets	32		
Sheep and lambs	1,121		
Turkeys	(D)		

See 2017 Census of Agriculture, U.S. Summary and State Data, for complete footnotes, explanations, definitions, commodity descriptions, and methodology.

^a This race alone or in combination with other races. ^b May not add to 100% due to rounding. ^c Data collected for a maximum of four producers per farm.

^d Crop commodity names may be shortened; see full names at www.nass.usda.gov/go/cropnames.pdf. ^e Position below the line does not indicate rank.

(D) Withheld to avoid disclosing data for individual operations. (NA) Not available. (Z) Less than half of the unit shown. (-) Represents zero.



California Farms with White Producers^a

Total and Per Farm Overview, 2017

	Farms with White Producers	All Farms
Number of farms	66,439	70,521
Land in farms (acres)	23,801,206	24,522,801
Average size of farm (acres)	358	348
Total	(\$)	(\$)
Market value of products sold	42,930,269,000	45,154,359,000
Government payments	123,978,000	127,938,000
Farm-related income	1,344,495,000	1,404,033,000
Total farm production expenses	35,973,480,000	37,775,929,000
Net cash farm income	8,425,263,000	8,910,399,000
Per farm average	(\$)	(\$)
Market value of products sold	646,161	640,297
Government payments (average per farm receiving)	24,229	24,112
Farm-related income	68,197	66,671
Total farm production expenses	541,451	535,669
Net cash farm income	126,812	126,351

Share of Sales by Type (%)

Crops	73
Livestock, poultry, and products	27

Land in Farms by Use (%) ^b

Cropland	38
Pastureland	48
Woodland	8
Other	6

Land Use Practices (% of farms)

No till	5
Reduced till	4
Intensive till	10
Cover crop	9

Farms by Value of Sales

	Number	Percent ^b
Less than \$2,500	18,399	28
\$2,500 to \$4,999	4,772	7
\$5,000 to \$9,999	6,385	10
\$10,000 to \$24,999	7,865	12
\$25,000 to \$49,999	5,627	8
\$50,000 to \$99,999	5,246	8
\$100,000 or more	18,145	27
Total	66,439	100

Farms by Size

	Number	Percent ^b
1 to 9 acres	22,303	34
10 to 49 acres	20,379	31
50 to 179 acres	10,505	16
180 to 499 acres	5,973	9
500 to 999 acres	2,930	4
1,000 + acres	4,349	7
Total	66,439	100

2017 CENSUS OF AGRICULTURE Race/Ethnicity/Gender Profile

Market Value of Agricultural Products Sold

	Sales (\$1,000)	No. of Farms
Total	42,930,269	66,439
Crops	31,249,258	41,905
Grains, oilseeds, dry beans, dry peas	1,007,503	3,080
Tobacco	-	-
Cotton and cottonseed	(D)	492
Vegetables, melons, potatoes, sweet potatoes	7,738,982	4,398
Fruits, tree nuts, berries	18,380,665	32,612
Nursery, greenhouse, floriculture, sod	2,627,503	2,805
Cultivated Christmas trees, short rotation woody crops	(D)	232
Other crops and hay	993,048	4,898
Livestock, poultry, and products	11,681,011	18,081
Poultry and eggs	1,828,477	3,864
Cattle and calves	3,097,274	10,082
Milk from cows	6,423,129	1,274
Hogs and pigs	31,566	1,209
Sheep, goats, wool, mohair, milk	84,590	3,813
Horses, ponies, mules, burros, donkeys	47,925	1,743
Aquaculture	92,416	129
Other animals and animal products	75,634	1,569

Total Producers ^c 115,287

Sex
Male 72,270
Female 43,017

Age
<35 7,309
35 – 64 63,819
65 and older 44,159

Primary occupation
Farming 55,426
Other 59,861

Days worked off farm
None 47,284
1 to 199 27,717
200 + 40,286

Other characteristics
Hispanic/Latino/Spanish 13,461
With military service 11,566
New and beginning farmers 31,676

Average age (years) 59.4

Top Crops in Acres ^d

Forage (hay/haylage), all	1,539,616
Almonds	1,130,990
Vegetables harvested, all	1,115,815
Grapes	866,116
Rice	426,910

Percent of farms that:

Have internet access **83**

Farm organically **5**

Sell directly to consumers **11**

Hire farm labor **42**

Are family farms **93**

Livestock Inventory (Dec 31, 2017)

Broilers and other meat-type chickens	44,681,230
Cattle and calves	5,137,291
Goats	118,410
Hogs and pigs	95,662
Horses and ponies	97,900
Layers	13,419,960
Pullets	4,483,743
Sheep and lambs	473,282
Turkeys	3,498,975

Demographic Data in the Census of Agriculture

The agriculture census is a complete count of U.S. farms and ranches and the people who operate them. Demographic information is available at national, state, and county levels, and for classes of farm and congressional districts. Results from the 2017 Census and earlier are available through the searchable database Quick Stats, the new Census Data Query Tool, downloadable PDF reports, maps, and topic-specific Highlights and Profiles.

See also the video "What's New in the 2017 Census?" (www.nass.usda.gov/Newsroom/Video/Features/index.php).

See 2017 Census of Agriculture, U.S. Summary and State Data, for complete footnotes, explanations, definitions, commodity descriptions, and methodology.

^a This race alone or in combination with other races. ^b May not add to 100% due to rounding. ^c Data collected for a maximum of four producers per farm.

^d Crop commodity names may be shortened; see full names at www.nass.usda.gov/go/cropnames.pdf. ^e Position below the line does not indicate rank.

(D) Withheld to avoid disclosing data for individual operations. (NA) Not available. (Z) Less than half of the unit shown. (-) Represents zero.



California Farms with Hispanic, Latino, or Spanish Producers

Total and Per Farm Overview, 2017

	Farms with Hispanic/Latino/Spanish Producers	All Farms
Number of farms	11,002	70,521
Land in farms (acres)	2,952,168	24,522,801
Average size of farm (acres)	268	348
Total	(\$)	(\$)
Market value of products sold	9,058,857,000	45,154,359,000
Government payments	17,662,000	127,938,000
Farm-related income	213,659,000	1,404,033,000
Total farm production expenses	7,456,008,000	37,775,929,000
Net cash farm income	1,834,170,000	8,910,399,000
Per farm average	(\$)	(\$)
Market value of products sold	823,383	640,297
Government payments (average per farm receiving)	31,483	24,112
Farm-related income	65,299	66,671
Total farm production expenses	677,696	535,669
Net cash farm income	166,712	126,351

Share of Sales by Type (%)

Crops	79
Livestock, poultry, and products	21

Land in Farms by Use (%) ^b

Cropland	47
Pastureland	39
Woodland	9
Other	6

Land Use Practices (% of farms)

No till	7
Reduced till	4
Intensive till	12
Cover crop	10

Farms by Value of Sales

	Number	Percent ^b
Less than \$2,500	2,486	23
\$2,500 to \$4,999	766	7
\$5,000 to \$9,999	1,041	9
\$10,000 to \$24,999	1,312	12
\$25,000 to \$49,999	989	9
\$50,000 to \$99,999	1,051	10
\$100,000 or more	3,357	31
Total	11,002	100

Farms by Size

	Number	Percent ^b
1 to 9 acres	4,041	37
10 to 49 acres	3,935	36
50 to 179 acres	1,550	14
180 to 499 acres	718	7
500 to 999 acres	306	3
1,000 + acres	452	4
Total	11,002	100

2017 CENSUS OF AGRICULTURE Race/Ethnicity/Gender Profile

Market Value of Agricultural Products Sold

	Sales (\$1,000)	No. of Farms
Total	9,058,857	11,002
Crops	7,186,112	8,033
Grains, oilseeds, dry beans, dry peas	113,609	359
Tobacco	-	-
Cotton and cottonseed	53,314	58
Vegetables, melons, potatoes, sweet potatoes	2,201,477	1,133
Fruits, tree nuts, berries	3,745,269	6,117
Nursery, greenhouse, floriculture, sod	937,243	828
Cultivated Christmas trees, short rotation woody crops	71	16
Other crops and hay	135,129	648
Livestock, poultry, and products	1,872,745	2,100
Poultry and eggs	771,751	576
Cattle and calves	217,880	896
Milk from cows	811,002	133
Hogs and pigs	(D)	159
Sheep, goats, wool, mohair, milk	25,557	621
Horses, ponies, mules, burros, donkeys	(D)	145
Aquaculture	12,436	12
Other animals and animal products	13,123	224

Total Producers ^c

14,597

Sex

Male	9,953
Female	4,644

Age

<35	1,388
35 – 64	9,590
65 and older	3,619

Race

American Indian/Alaska Native	430
Asian	478
Black/African American	42
Native Hawaiian/Pacific Islander	141
White	13,148
More than one race	358

Primary occupation

Farming	8,137
Other	6,460

Days worked off farm

None	5,356
1 to 199	3,776
200 +	5,465

Other characteristics

With military service	935
New and beginning farmers	4,771

Average age (years)

54.9

Top Crops in Acres ^d

Vegetables harvested, all	271,204
Forage (hay/haylage), all	183,458
Almonds	149,276
Grapes	134,129
Lettuce, all	89,034

Percent of farms that:

Have internet access **76**

Farm organically **6**

Sell directly to consumers **12**

Hire farm labor **49**

Are family farms **91**

Livestock Inventory (Dec 31, 2017)

Broilers and other meat-type chickens	22,667,245
Cattle and calves	556,665
Goats	46,109
Hogs and pigs	(D)
Horses and ponies	8,536
Layers	1,386,719
Pullets	624,095
Sheep and lambs	135,811
Turkeys	1,801,565

Demographic Data in the Census of Agriculture

The agriculture census is a complete count of U.S. farms and ranches and the people who operate them. Demographic information is available at national, state, and county levels, and for classes of farm and congressional districts. Results from the 2017 Census and earlier are available through the searchable database Quick Stats, the new Census Data Query Tool, downloadable PDF reports, maps, and topic-specific Highlights and Profiles.

See also the video "What's New in the 2017 Census?" (www.nass.usda.gov/Newsroom/Video/Features/index.php).

See 2017 Census of Agriculture, U.S. Summary and State Data, for complete footnotes, explanations, definitions, commodity descriptions, and methodology.

^a This race alone or in combination with other races. ^b May not add to 100% due to rounding. ^c Data collected for a maximum of four producers per farm.

^d Crop commodity names may be shortened; see full names at www.nass.usda.gov/go/cropnames.pdf. ^e Position below the line does not indicate rank.

(D) Withheld to avoid disclosing data for individual operations. (NA) Not available. (Z) Less than half of the unit shown. (-) Represents zero.



California Farms with Female Producers

Total and Per Farm Overview, 2017

	Farms with Female Producers	All Farms
Number of farms	42,138	70,521
Land in farms (acres)	10,887,774	24,522,801
Average size of farm (acres)	258	348
Total	(\$)	(\$)
Market value of products sold	15,613,359,000	45,154,359,000
Government payments	62,457,000	127,938,000
Farm-related income	682,864,000	1,404,033,000
Total farm production expenses	13,538,683,000	37,775,929,000
Net cash farm income	2,819,998,000	8,910,399,000
Per farm average	(\$)	(\$)
Market value of products sold	370,529	640,297
Government payments (average per farm receiving)	22,670	24,112
Farm-related income	57,124	66,671
Total farm production expenses	321,294	535,669
Net cash farm income	66,923	126,351

Share of Sales by Type (%)

Crops	75
Livestock, poultry, and products	25

Land in Farms by Use (%) ^b

Cropland	33
Pastureland	53
Woodland	8
Other	6

Land Use Practices (% of farms)

No till	5
Reduced till	3
Intensive till	7
Cover crop	9

Farms by Value of Sales

	Number	Percent ^b
Less than \$2,500	12,898	31
\$2,500 to \$4,999	3,483	8
\$5,000 to \$9,999	4,433	11
\$10,000 to \$24,999	5,199	12
\$25,000 to \$49,999	3,629	9
\$50,000 to \$99,999	3,373	8
\$100,000 or more	9,123	22
Total	42,138	100

Farms by Size

	Number	Percent ^b
1 to 9 acres	15,699	37
10 to 49 acres	13,739	33
50 to 179 acres	6,137	15
180 to 499 acres	3,091	7
500 to 999 acres	1,407	3
1,000 + acres	2,065	5
Total	42,138	100

2017 CENSUS OF AGRICULTURE Race/Ethnicity/Gender Profile

Market Value of Agricultural Products Sold

	Sales (\$1,000)	No. of Farms
Total	15,613,359	42,138
Crops	11,648,726	25,224
Grains, oilseeds, dry beans, dry peas	426,351	1,389
Tobacco	-	-
Cotton and cottonseed	136,680	182
Vegetables, melons, potatoes, sweet potatoes	2,779,641	2,775
Fruits, tree nuts, berries	6,527,187	20,040
Nursery, greenhouse, floriculture, sod	1,398,000	1,788
Cultivated Christmas trees, short rotation woody crops	4,110	155
Other crops and hay	376,756	2,450
Livestock, poultry, and products	3,964,633	12,474
Poultry and eggs	691,062	3,208
Cattle and calves	852,043	6,121
Milk from cows	2,246,531	557
Hogs and pigs	7,627	976
Sheep, goats, wool, mohair, milk	55,807	3,066
Horses, ponies, mules, burros, donkeys	30,283	1,430
Aquaculture	30,884	59
Other animals and animal products	50,397	1,175

Total Producers ^c

46,235

Age

<35	2,894
35 – 64	26,775
65 and older	16,566

Race

American Indian/Alaska Native	566
Asian	2,210
Black/African American	150
Native Hawaiian/Pacific Islander	244
White	42,376
More than one race	689

Primary occupation

Farming	17,649
Other	28,586

Days worked off farm

None	19,243
1 to 199	11,425
200 +	15,567

Other characteristics

Hispanic/Latino/Spanish	4,644
With military service	526
New and beginning farmers	14,191

Average age (years)

59.0

Top Crops in Acres ^d

Forage (hay/haylage), all	583,683
Almonds	404,440
Vegetables harvested, all	402,809
Grapes	335,659
Rice	209,091

Percent of farms that:

Have internet access	85
Farm organically	5
Sell directly to consumers	12
Hire farm labor	40
Are family farms	95

Livestock Inventory (Dec 31, 2017)

Broilers and other meat-type chickens	19,309,526
Cattle and calves	1,876,436
Goats	93,723
Hogs and pigs	25,353
Horses and ponies	77,207
Layers	4,289,208
Pullets	852,158
Sheep and lambs	280,971
Turkeys	686,739

Demographic Data in the Census of Agriculture

The agriculture census is a complete count of U.S. farms and ranches and the people who operate them. Demographic information is available at national, state, and county levels, and for classes of farm and congressional districts. Results from the 2017 Census and earlier are available through the searchable database Quick Stats, the new Census Data Query Tool, downloadable PDF reports, maps, and topic-specific Highlights and Profiles.

See also the video "What's New in the 2017 Census?" (www.nass.usda.gov/Newsroom/VideoFeatures/index.php).

See 2017 Census of Agriculture, U.S. Summary and State Data, for complete footnotes, explanations, definitions, commodity descriptions, and methodology.

^a This race alone or in combination with other races. ^b May not add to 100% due to rounding. ^c Data collected for a maximum of four producers per farm.

^d Crop commodity names may be shortened; see full names at www.nass.usda.gov/go/croplnames.pdf. ^e Position below the line does not indicate rank.

(D) Withheld to avoid disclosing data for individual operations. (NA) Not available. (Z) Less than half of the unit shown. (-) Represents zero.