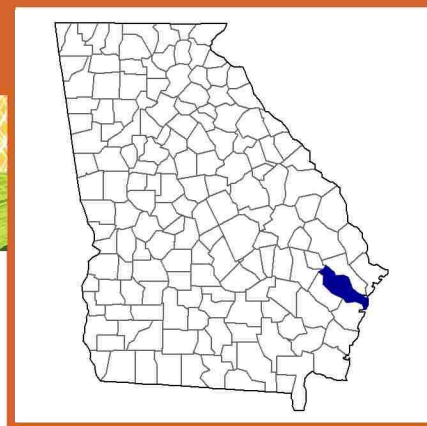


Liberty County, Georgia Farms with American Indian or Alaska Native Producers^a

Data not available at this geographic level for farms with American Indian or Alaska Native Producers.

^a This race alone or in combination with other races.



Liberty County, Georgia Farms with Asian Producers^a

Data not available at this geographic level for farms with Asian Producers.

^a This race alone or in combination with other races.



Liberty County, Georgia Farms with Black or African American Producers^a

Data not available at this geographic level for farms with Black or African American Producers.

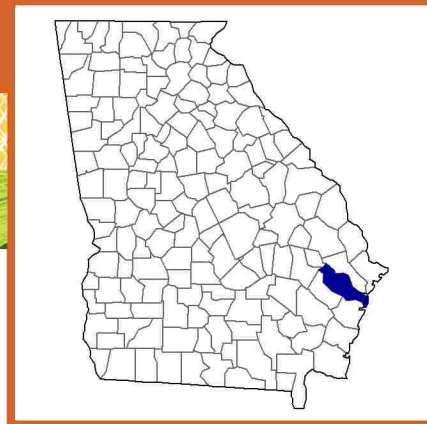
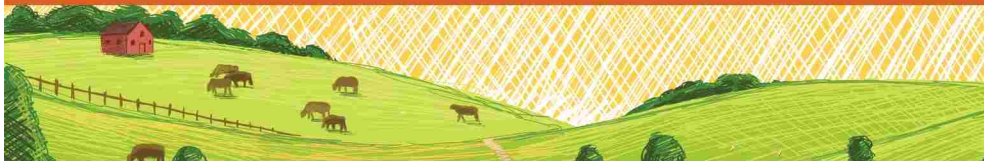
^a This race alone or in combination with other races.



Liberty County, Georgia Farms with Native Hawaiian or Other Pacific Islander Producers^a

Data not available at this geographic level for farms with Native Hawaiian or Other Pacific Islander Producers.

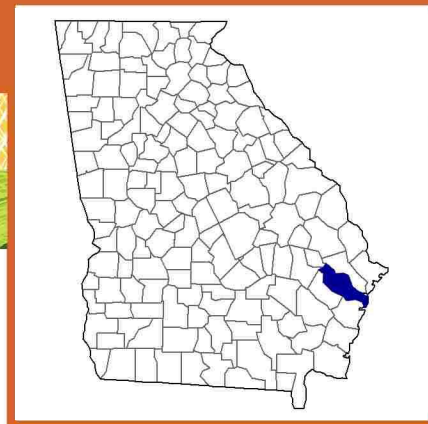
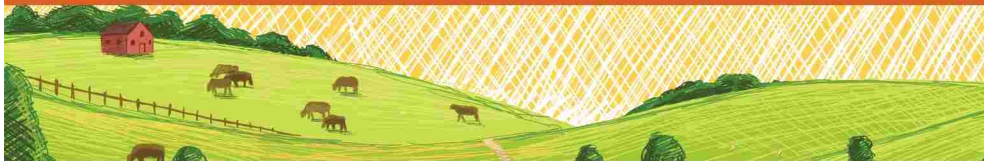
^a This race alone or in combination with other races.



Liberty County, Georgia Farms with White Producers^a

Data not available at this geographic level for farms with White Producers.

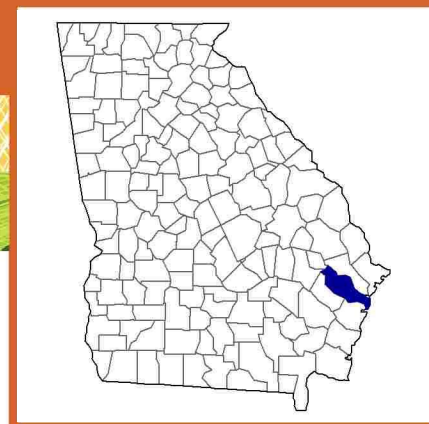
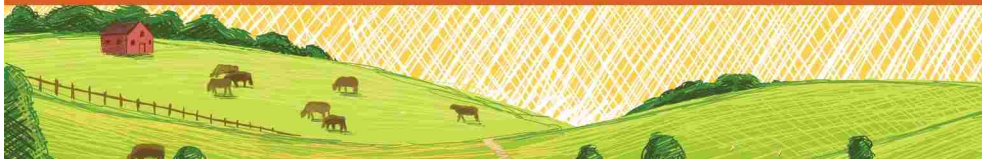
^a This race alone or in combination with other races.



Liberty County, Georgia

Farms with Hispanic, Latino, or Spanish Producers

Data not available at this geographic level for farms with Hispanic, Latino, or Spanish Producers.



Liberty County, Georgia

Farms with Female Producers

Total and Per Farm Overview, 2017

	Farms with Female Producers	All Farms
Number of farms	41	69
Land in farms (acres)	4,456	6,373
Average size of farm (acres)	109	92
Total	(\$)	(\$)
Market value of products sold	290,000	481,000
Government payments	19,000	19,000
Farm-related income	69,000	138,000
Total farm production expenses	584,000	943,000
Net cash farm income	-206,000	-305,000
Per farm average	(\$)	(\$)
Market value of products sold	7,076	6,977
Government payments (average per farm receiving)	2,669	2,361
Farm-related income	11,512	12,529
Total farm production expenses	14,244	13,667
Net cash farm income	-5,028	-4,419

Share of Sales by Type (%)

Crops	55
Livestock, poultry, and products	45

Land in Farms by Use (%) ^b

Cropland	10
Pastureland	16
Woodland	53
Other	20

Land Use Practices (% of farms)

No till	-
Reduced till	-
Intensive till	10
Cover crop	-

Farms by Value of Sales

	Number	Percent ^b
Less than \$2,500	20	49
\$2,500 to \$4,999	8	20
\$5,000 to \$9,999	4	10
\$10,000 to \$24,999	4	10
\$25,000 to \$49,999	5	12
\$50,000 to \$99,999	-	-
\$100,000 or more	-	-
Total	41	100

Farms by Size

	Number	Percent ^b
1 to 9 acres	14	34
10 to 49 acres	13	32
50 to 179 acres	8	20
180 to 499 acres	3	7
500 to 999 acres	2	5
1,000 + acres	1	2
Total	41	100



2017 CENSUS OF AGRICULTURE Race/Ethnicity/Gender Profile

Market Value of Agricultural Products Sold			Total Producers ^c	50
	Sales (\$1,000)	No. of Farms		
Total	290	41	Age	
			<35	11
			35 – 64	31
			65 and older	8
Crops	160	14	Race	
Grains, oilseeds, dry beans, dry peas	2	3	American Indian/Alaska Native	-
Tobacco	-	-	Asian	1
Cotton and cottonseed	-	-	Black/African American	3
Vegetables, melons, potatoes, sweet potatoes	(D)	2	Native Hawaiian/Pacific Islander	-
Fruits, tree nuts, berries	27	5	White	46
Nursery, greenhouse, floriculture, sod	(D)	3	More than one race	-
Cultivated Christmas trees, short rotation woody crops	(D)	1	Primary occupation	
Other crops and hay	(D)	2	Farming	14
			Other	36
Livestock, poultry, and products	130	23	Days worked off farm	
Poultry and eggs	11	13	None	14
Cattle and calves	14	4	1 to 199	11
Milk from cows	-	-	200 +	25
Hogs and pigs	-	-	Other characteristics	
Sheep, goats, wool, mohair, milk	(D)	6	Hispanic/Latino/Spanish	-
Horses, ponies, mules, burros, donkeys	96	7	With military service	4
Aquaculture	-	-	New and beginning farmers	21
Other animals and animal products	(D)	2	Average age (years)	52.9
Top Crops in Acres ^d	Percent of farms that:		Demographic Data in the Census of Agriculture	
Forage (hay/haylage), all (D)	Have internet access	93	<p>The agriculture census is a complete count of U.S. farms and ranches and the people who operate them. Demographic information is available at national, state, and county levels, and for classes of farm and congressional districts. Results from the 2017 Census and earlier are available through the searchable database Quick Stats, the new Census Data Query Tool, downloadable PDF reports, maps, and topic-specific Highlights and Profiles.</p> <p>See also the video “What’s New in the 2017 Census?” (www.nass.usda.gov/Newsroom/VideoFeatures/index.php).</p>	
Pecans, all 23	Farm organically	-		
Cut Christmas trees (D)	Sell directly to consumers	22		
Soybeans for beans (D)	Hire farm labor	10		
Vegetables harvested, all (D)	Are family farms	95		
Livestock Inventory (Dec 31, 2017)				
Broilers and other meat-type chickens -				
Cattle and calves 217				
Goats 216				
Hogs and pigs -				
Horses and ponies 136				
Layers 314				
Pullets 114				
Sheep and lambs -				
Turkeys (D)				

See 2017 Census of Agriculture, U.S. Summary and State Data, for complete footnotes, explanations, definitions, commodity descriptions, and methodology.

^a This race alone or in combination with other races. ^b May not add to 100% due to rounding. ^c Data collected for a maximum of four producers per farm.

^d Crop commodity names may be shortened; see full names at www.nass.usda.gov/go/cropnames.pdf. ^e Position below the line does not indicate rank.

(D) Withheld to avoid disclosing data for individual operations. (NA) Not available. (Z) Less than half of the unit shown. (-) Represents zero.