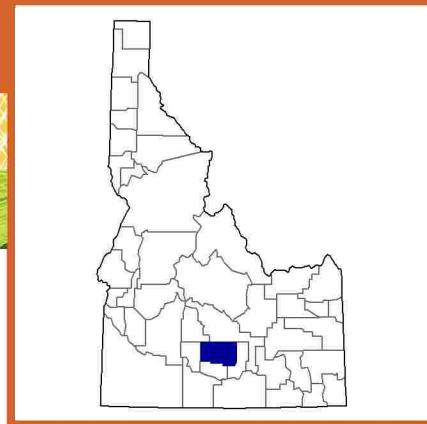


## Lincoln County, Idaho Farms with American Indian or Alaska Native Producers<sup>a</sup>

**Data not available at this geographic level for farms with American Indian or Alaska Native Producers.**

<sup>a</sup> This race alone or in combination with other races.





## Lincoln County, Idaho Farms with Asian Producers<sup>a</sup>

**Data not available at this geographic level for farms with Asian Producers.**

<sup>a</sup> This race alone or in combination with other races.



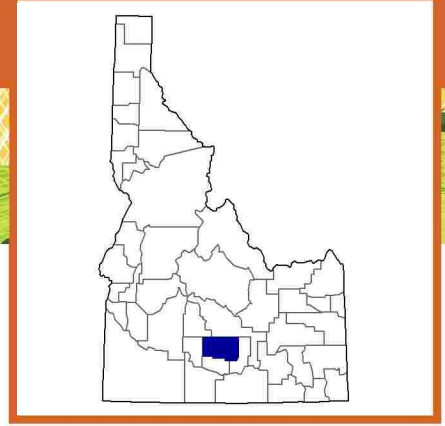


## Lincoln County, Idaho Farms with Black or African American Producers<sup>a</sup>

**Data not available at this geographic level for farms with Black or African American Producers.**

<sup>a</sup> This race alone or in combination with other races.





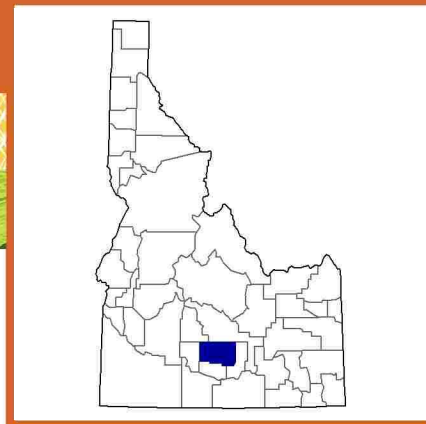
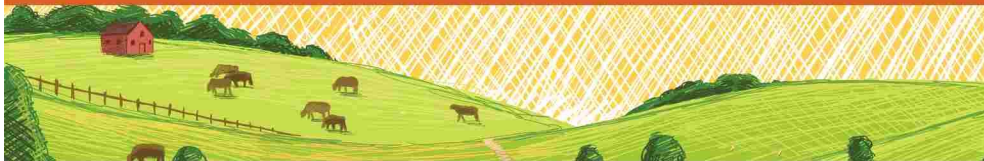
## Lincoln County, Idaho Farms with Native Hawaiian or Other Pacific Islander Producers<sup>a</sup>

**Data not available at this geographic level for farms with Native Hawaiian or Other Pacific Islander Producers.**

<sup>a</sup> This race alone or in combination with other races.





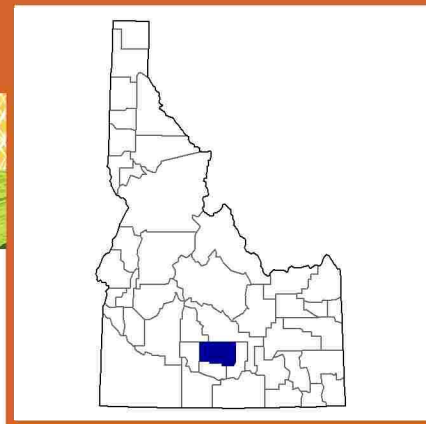
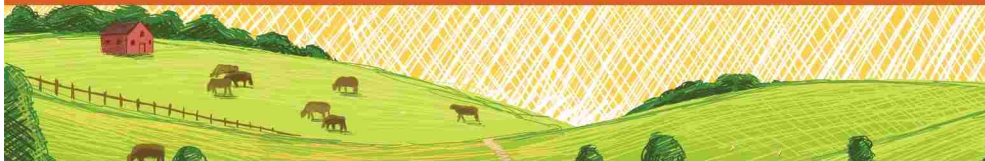


## Lincoln County, Idaho Farms with White Producers<sup>a</sup>

Data not available at this geographic level for farms with White Producers.

<sup>a</sup> This race alone or in combination with other races.

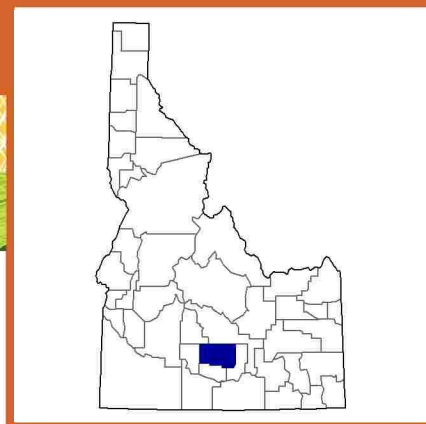
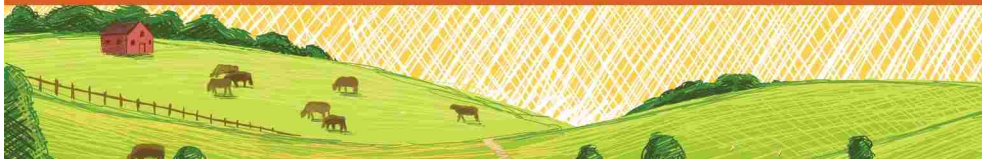




## Lincoln County, Idaho Farms with Hispanic, Latino, or Spanish Producers

Data not available at this geographic level for farms with Hispanic, Latino, or Spanish Producers.





## Lincoln County, Idaho

### Farms with Female Producers

#### Total and Per Farm Overview, 2017

	Farms with Female Producers	All Farms
Number of farms	160	276
Land in farms (acres)	52,444	134,911
Average size of farm (acres)	328	489
<b>Total</b>	<b>(\$)</b>	<b>(\$)</b>
Market value of products sold	58,577,000	203,088,000
Government payments	421,000	1,163,000
Farm-related income	1,913,000	4,668,000
Total farm production expenses	48,971,000	168,616,000
Net cash farm income	11,940,000	40,303,000
<b>Per farm average</b>	<b>(\$)</b>	<b>(\$)</b>
Market value of products sold	366,107	735,827
Government payments (average per farm receiving)	8,951	11,744
Farm-related income	28,546	36,188
Total farm production expenses	306,068	610,927
Net cash farm income	74,622	146,027

#### Share of Sales by Type (%)

Crops	17
Livestock, poultry, and products	83

#### Land in Farms by Use (%) <sup>b</sup>

Cropland	59
Pastureland	36
Woodland	(D)
Other	(D)

#### Land Use Practices (% of farms)

No till	3
Reduced till	8
Intensive till	15
Cover crop	11

#### Farms by Value of Sales

	Number	Percent <sup>b</sup>
Less than \$2,500	46	29
\$2,500 to \$4,999	5	3
\$5,000 to \$9,999	15	9
\$10,000 to \$24,999	20	13
\$25,000 to \$49,999	17	11
\$50,000 to \$99,999	14	9
\$100,000 or more	43	27
<b>Total</b>	<b>160</b>	<b>100</b>

#### Farms by Size

	Number	Percent <sup>b</sup>
1 to 9 acres	23	14
10 to 49 acres	41	26
50 to 179 acres	40	25
180 to 499 acres	21	13
500 to 999 acres	24	15
1,000 + acres	11	7
<b>Total</b>	<b>160</b>	<b>100</b>



# 2017 CENSUS OF AGRICULTURE Race/Ethnicity/Gender Profile

Market Value of Agricultural Products Sold			Total Producers <sup>c</sup>	169
	Sales (\$1,000)	No. of Farms		
<b>Total</b>	<b>58,577</b>	<b>160</b>	<b>Age</b>	
			<35	31
			35 – 64	105
			65 and older	33
<b>Crops</b>	<b>10,154</b>	<b>79</b>	<b>Race</b>	
Grains, oilseeds, dry beans, dry peas	(D)	21	American Indian/Alaska Native	-
Tobacco	-	-	Asian	-
Cotton and cottonseed	-	-	Black/African American	-
Vegetables, melons, potatoes, sweet potatoes	(D)	1	Native Hawaiian/Pacific Islander	-
Fruits, tree nuts, berries	-	-	White	169
Nursery, greenhouse, floriculture, sod	(D)	1	More than one race	-
Cultivated Christmas trees, short rotation woody crops	-	-		
Other crops and hay	6,114	76	<b>Primary occupation</b>	
			Farming	84
<b>Livestock, poultry, and products</b>	<b>48,423</b>	<b>106</b>	Other	85
Poultry and eggs	(D)	15	<b>Days worked off farm</b>	
Cattle and calves	9,680	96	None	76
Milk from cows	38,401	8	1 to 199	35
Hogs and pigs	19	4	200 +	58
Sheep, goats, wool, mohair, milk	244	17		
Horses, ponies, mules, burros, donkeys	60	18	<b>Other characteristics</b>	
Aquaculture	-	-	Hispanic/Latino/Spanish	11
Other animals and animal products	(D)	3	With military service	2
			New and beginning farmers	53
			<b>Average age (years)</b>	<b>53.2</b>
<b>Top Crops in Acres <sup>d</sup></b>	<b>Percent of farms that:</b>			<b>Demographic Data in the Census of Agriculture</b>
Forage (hay/haylage), all	14,088	Have internet access	<b>83</b>	<p>The agriculture census is a complete count of U.S. farms and ranches and the people who operate them. Demographic information is available at national, state, and county levels, and for classes of farm and congressional districts. Results from the 2017 Census and earlier are available through the searchable database Quick Stats, the new Census Data Query Tool, downloadable PDF reports, maps, and topic-specific Highlights and Profiles.</p> <p>See also the video “What’s New in the 2017 Census?” (<a href="http://www.nass.usda.gov/Newsroom/VideoFeatures/index.php">www.nass.usda.gov/Newsroom/VideoFeatures/index.php</a>).</p>
Corn for silage	5,248	Farm organically	<b>3</b>	
Wheat for grain, all	2,199	Sell directly to consumers	<b>3</b>	
Sugarbeets for sugar	1,741	Hire farm labor	<b>41</b>	
Barley for grain	1,295	Are family farms	<b>98</b>	
<b>Livestock Inventory (Dec 31, 2017)</b>				
Broilers and other meat-type chickens	180			
Cattle and calves	20,565			
Goats	385			
Hogs and pigs	77			
Horses and ponies	529			
Layers	388			
Pullets	-			
Sheep and lambs	829			
Turkeys	140			

See 2017 Census of Agriculture, U.S. Summary and State Data, for complete footnotes, explanations, definitions, commodity descriptions, and methodology.

<sup>a</sup> This race alone or in combination with other races. <sup>b</sup> May not add to 100% due to rounding. <sup>c</sup> Data collected for a maximum of four producers per farm.

<sup>d</sup> Crop commodity names may be shortened; see full names at [www.nass.usda.gov/go/cropnames.pdf](http://www.nass.usda.gov/go/cropnames.pdf). <sup>e</sup> Position below the line does not indicate rank.

(D) Withheld to avoid disclosing data for individual operations. (NA) Not available. (Z) Less than half of the unit shown. (-) Represents zero.