



## **Morgan County, Illinois Farms with American Indian or Alaska Native Producers<sup>a</sup>**

**Data not available at this geographic level for farms with American Indian or Alaska Native Producers.**

<sup>a</sup> This race alone or in combination with other races.





## Morgan County, Illinois Farms with Asian Producers<sup>a</sup>

Data not available at this geographic level for farms with Asian Producers.

<sup>a</sup> This race alone or in combination with other races.





## Morgan County, Illinois Farms with Black or African American Producers<sup>a</sup>

**Data not available at this geographic level for farms with Black or African American Producers.**

<sup>a</sup> This race alone or in combination with other races.





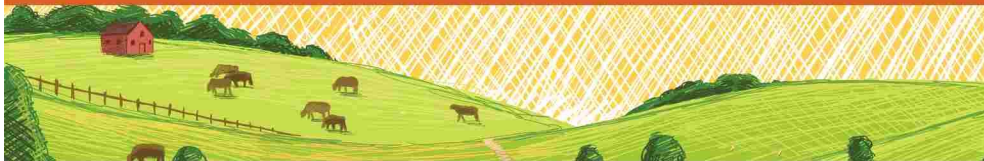
## **Morgan County, Illinois Farms with Native Hawaiian or Other Pacific Islander Producers<sup>a</sup>**

**Data not available at this geographic level for farms with Native Hawaiian or Other Pacific Islander Producers.**

<sup>a</sup> This race alone or in combination with other races.







## Morgan County, Illinois Farms with White Producers<sup>a</sup>

Data not available at this geographic level for farms with White Producers.

<sup>a</sup> This race alone or in combination with other races.

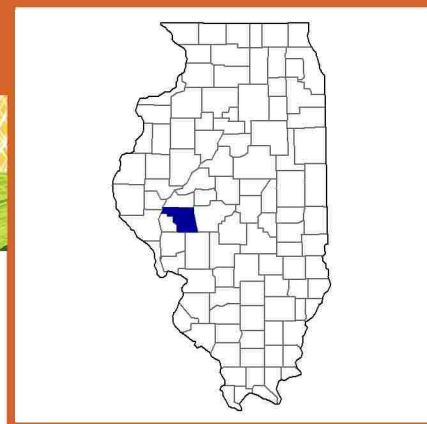
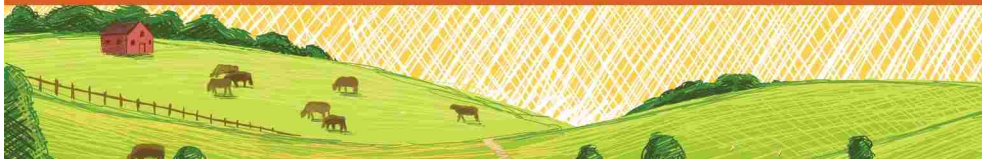




## **Morgan County, Illinois Farms with Hispanic, Latino, or Spanish Producers**

Data not available at this geographic level for farms with Hispanic, Latino, or Spanish Producers.





## Morgan County, Illinois

### Farms with Female Producers

#### Total and Per Farm Overview, 2017

	Farms with Female Producers	All Farms
Number of farms	272	693
Land in farms (acres)	89,911	300,265
Average size of farm (acres)	331	433
<b>Total</b>	<b>(\$)</b>	<b>(\$)</b>
Market value of products sold	44,766,000	172,017,000
Government payments	1,376,000	4,846,000
Farm-related income	3,333,000	8,169,000
Total farm production expenses	36,425,000	128,135,000
Net cash farm income	13,050,000	56,897,000
<b>Per farm average</b>	<b>(\$)</b>	<b>(\$)</b>
Market value of products sold	164,580	248,220
Government payments (average per farm receiving)	7,091	9,231
Farm-related income	22,074	22,139
Total farm production expenses	133,914	184,899
Net cash farm income	47,978	82,103

#### Share of Sales by Type (%)

Crops	96
Livestock, poultry, and products	4

#### Land in Farms by Use (%) <sup>b</sup>

Cropland	87
Pastureland	5
Woodland	5
Other	3

#### Land Use Practices (% of farms)

No till	42
Reduced till	30
Intensive till	18
Cover crop	18

#### Farms by Value of Sales

	Number	Percent <sup>b</sup>
Less than \$2,500	73	27
\$2,500 to \$4,999	20	7
\$5,000 to \$9,999	23	8
\$10,000 to \$24,999	29	11
\$25,000 to \$49,999	23	8
\$50,000 to \$99,999	20	7
\$100,000 or more	84	31
<b>Total</b>	<b>272</b>	<b>100</b>

#### Farms by Size

	Number	Percent <sup>b</sup>
1 to 9 acres	15	6
10 to 49 acres	84	31
50 to 179 acres	67	25
180 to 499 acres	65	24
500 to 999 acres	15	6
1,000 + acres	26	10
<b>Total</b>	<b>272</b>	<b>100</b>



# 2017 CENSUS OF AGRICULTURE Race/Ethnicity/Gender Profile

Market Value of Agricultural Products Sold			Total Producers <sup>c</sup>	295	
	Sales (\$1,000)	No. of Farms			
Total	44,766	272	Age		
			<35	18	
			35 – 64	162	
			65 and older	115	
Crops	43,008	198	Race		
Grains, oilseeds, dry beans, dry peas	42,721	180	American Indian/Alaska Native	-	
Tobacco	-	-	Asian	-	
Cotton and cottonseed	-	-	Black/African American	-	
Vegetables, melons, potatoes, sweet potatoes	(D)	2	Native Hawaiian/Pacific Islander	-	
Fruits, tree nuts, berries	(D)	5	White	295	
Nursery, greenhouse, floriculture, sod	-	-	More than one race	-	
Cultivated Christmas trees, short rotation woody crops	-	-			
Other crops and hay	162	27	Primary occupation		
			Farming	77	
			Other	218	
Livestock, poultry, and products	1,758	76	Days worked off farm		
Poultry and eggs	85	17	None	135	
Cattle and calves	1,501	56	1 to 199	51	
Milk from cows	(D)	1	200 +	109	
Hogs and pigs	38	8			
Sheep, goats, wool, mohair, milk	10	8	Other characteristics		
Horses, ponies, mules, burros, donkeys	(D)	2	Hispanic/Latino/Spanish	2	
Aquaculture	-	-	With military service	9	
Other animals and animal products	4	6	New and beginning farmers	91	
			Average age (years)	59.8	
Top Crops in Acres <sup>d</sup>			Demographic Data in the Census of Agriculture		
Corn for grain	41,094	Have internet access	83	The agriculture census is a complete count of U.S. farms and ranches and the people who operate them. Demographic information is available at national, state, and county levels, and for classes of farm and congressional districts. Results from the 2017 Census and earlier are available through the searchable database Quick Stats, the new Census Data Query Tool, downloadable PDF reports, maps, and topic-specific Highlights and Profiles.  See also the video “What’s New in the 2017 Census?”( <a href="http://www.nass.usda.gov/Newsroom/VideoFeatures/index.php">www.nass.usda.gov/Newsroom/VideoFeatures/index.php</a> ).	
Soybeans for beans	32,247	Farm organically	2		
Forage (hay/haylage), all	2,064	Sell directly to consumers	2		
Wheat for grain, all	225	Hire farm labor	20		
Corn for silage	153	Are family farms	94		
Livestock Inventory (Dec 31, 2017)					
Broilers and other meat-type chickens	168				
Cattle and calves	2,489				
Goats	154				
Hogs and pigs	151				
Horses and ponies	230				
Layers	751				
Pullets	114				
Sheep and lambs	(D)				
Turkeys	(D)				

See 2017 Census of Agriculture, U.S. Summary and State Data, for complete footnotes, explanations, definitions, commodity descriptions, and methodology.

<sup>a</sup> This race alone or in combination with other races. <sup>b</sup> May not add to 100% due to rounding. <sup>c</sup> Data collected for a maximum of four producers per farm.

<sup>d</sup> Crop commodity names may be shortened; see full names at [www.nass.usda.gov/go/cropnames.pdf](http://www.nass.usda.gov/go/cropnames.pdf). <sup>e</sup> Position below the line does not indicate rank.

(D) Withheld to avoid disclosing data for individual operations. (NA) Not available. (Z) Less than half of the unit shown. (-) Represents zero.