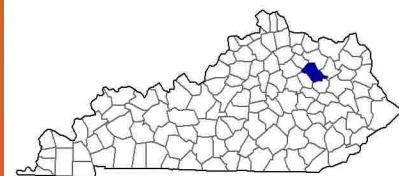
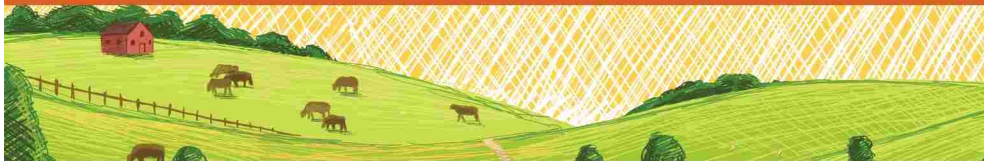


Bath County, Kentucky Farms with American Indian or Alaska Native Producers^a

Data not available at this geographic level for farms with American Indian or Alaska Native Producers.

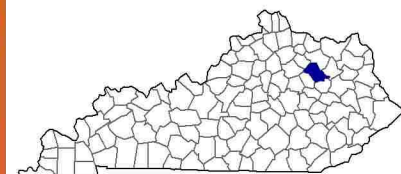
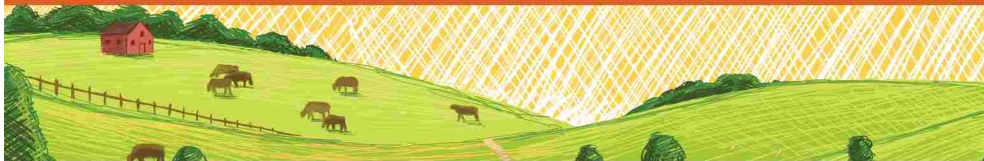
^a This race alone or in combination with other races.



Bath County, Kentucky Farms with Asian Producers^a

Data not available at this geographic level for farms with Asian Producers.

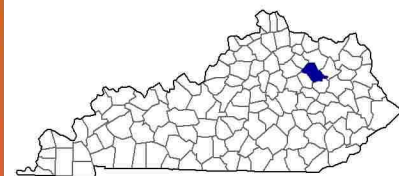
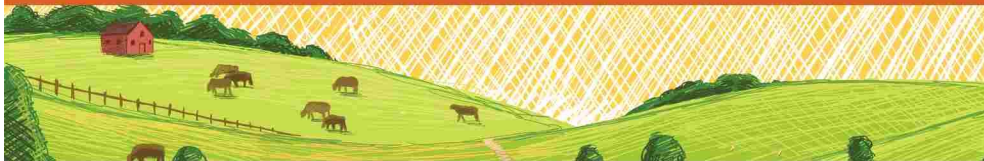
^a This race alone or in combination with other races.



Bath County, Kentucky Farms with Black or African American Producers^a

Data not available at this geographic level for farms with Black or African American Producers.

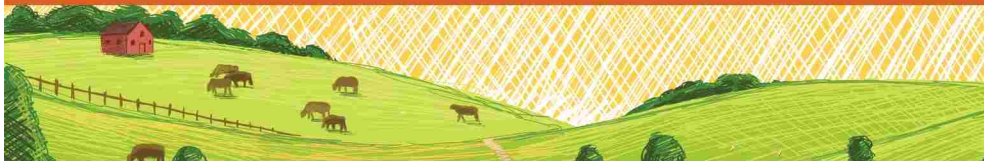
^a This race alone or in combination with other races.



Bath County, Kentucky Farms with Native Hawaiian or Other Pacific Islander Producers^a

Data not available at this geographic level for farms with Native Hawaiian or Other Pacific Islander Producers.

^a This race alone or in combination with other races.



Bath County, Kentucky Farms with White Producers^a

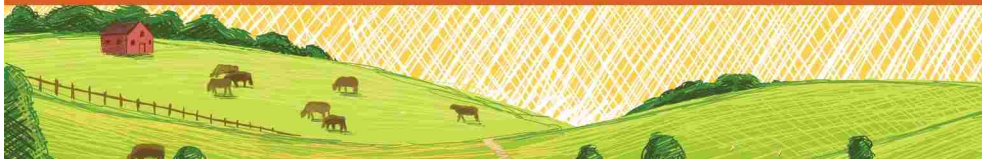
Data not available at this geographic level for farms with White Producers.

^a This race alone or in combination with other races.



Bath County, Kentucky Farms with Hispanic, Latino, or Spanish Producers

Data not available at this geographic level for farms with Hispanic, Latino, or Spanish Producers.



Bath County, Kentucky Farms with Female Producers

Total and Per Farm Overview, 2017

	Farms with Female Producers	All Farms
Number of farms	385	728
Land in farms (acres)	54,059	127,159
Average size of farm (acres)	140	175
Total	(\$)	(\$)
Market value of products sold	7,680,000	18,317,000
Government payments	138,000	217,000
Farm-related income	1,206,000	2,088,000
Total farm production expenses	8,492,000	17,457,000
Net cash farm income	533,000	3,164,000
Per farm average	(\$)	(\$)
Market value of products sold	19,949	25,160
Government payments (average per farm receiving)	6,559	4,820
Farm-related income	10,400	11,045
Total farm production expenses	22,056	23,979
Net cash farm income	1,385	4,347

Share of Sales by Type (%)

Crops	40
Livestock, poultry, and products	60

Land in Farms by Use (%) ^b

Cropland	40
Pastureland	34
Woodland	22
Other	4

Land Use Practices (% of farms)

No till	7
Reduced till	4
Intensive till	11
Cover crop	7

Farms by Value of Sales

	Number	Percent ^b
Less than \$2,500	161	42
\$2,500 to \$4,999	36	9
\$5,000 to \$9,999	43	11
\$10,000 to \$24,999	58	15
\$25,000 to \$49,999	38	10
\$50,000 to \$99,999	32	8
\$100,000 or more	17	4
Total	385	100

Farms by Size

	Number	Percent ^b
1 to 9 acres	22	6
10 to 49 acres	91	24
50 to 179 acres	178	46
180 to 499 acres	82	21
500 to 999 acres	11	3
1,000 + acres	1	(Z)
Total	385	100



2017 CENSUS OF AGRICULTURE Race/Ethnicity/Gender Profile

Market Value of Agricultural Products Sold			Total Producers ^c	435
	Sales (\$1,000)	No. of Farms		
Total	7,680	385	Age	
			<35	49
			35 – 64	277
			65 and older	109
Crops	3,089	183	Race	
Grains, oilseeds, dry beans, dry peas	1,285	30	American Indian/Alaska Native	-
Tobacco	(D)	10	Asian	-
Cotton and cottonseed	-	-	Black/African American	-
Vegetables, melons, potatoes, sweet potatoes	155	10	Native Hawaiian/Pacific Islander	-
Fruits, tree nuts, berries	(D)	3	White	433
Nursery, greenhouse, floriculture, sod	251	6	More than one race	2
Cultivated Christmas trees, short rotation woody crops	-	-	Primary occupation	
Other crops and hay	1,199	151	Farming	103
			Other	332
Livestock, poultry, and products	4,592	237	Days worked off farm	
Poultry and eggs	(D)	21	None	166
Cattle and calves	4,140	209	1 to 199	122
Milk from cows	(D)	2	200 +	147
Hogs and pigs	3	7	Other characteristics	
Sheep, goats, wool, mohair, milk	121	17	Hispanic/Latino/Spanish	13
Horses, ponies, mules, burros, donkeys	55	18	With military service	-
Aquaculture	-	-	New and beginning farmers	168
Other animals and animal products	3	9	Average age (years)	54.1
Top Crops in Acres ^d		Percent of farms that:	Demographic Data in the Census of Agriculture	
Forage (hay/haylage), all	13,433	Have internet access	77	The agriculture census is a complete count of U.S. farms and ranches and the people who operate them. Demographic information is available at national, state, and county levels, and for classes of farm and congressional districts. Results from the 2017 Census and earlier are available through the searchable database Quick Stats, the new Census Data Query Tool, downloadable PDF reports, maps, and topic-specific Highlights and Profiles. See also the video "What's New in the 2017 Census?" (www.nass.usda.gov/Newsroom/VideoFeatures/index.php).
Soybeans for beans	1,744	Farm organically	1	
Corn for grain	698	Sell directly to consumers	2	
Corn for silage	56	Hire farm labor	23	
Tobacco	53	Are family farms	98	
Livestock Inventory (Dec 31, 2017)				
Broilers and other meat-type chickens	296			
Cattle and calves	12,123			
Goats	221			
Hogs and pigs	81			
Horses and ponies	478			
Layers	5,808			
Pullets	89			
Sheep and lambs	446			
Turkeys	47			

See 2017 Census of Agriculture, U.S. Summary and State Data, for complete footnotes, explanations, definitions, commodity descriptions, and methodology.

^a This race alone or in combination with other races. ^b May not add to 100% due to rounding. ^c Data collected for a maximum of four producers per farm.

^d Crop commodity names may be shortened; see full names at www.nass.usda.gov/go/cropnames.pdf. ^e Position below the line does not indicate rank.

(D) Withheld to avoid disclosing data for individual operations. (NA) Not available. (Z) Less than half of the unit shown. (-) Represents zero.