

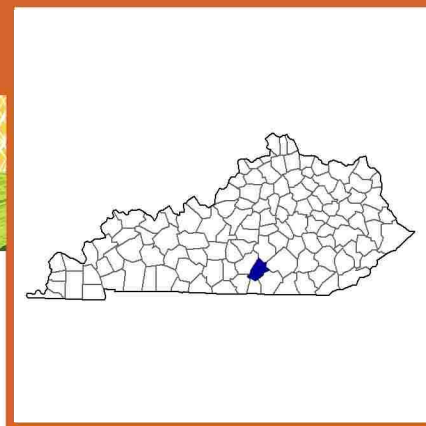
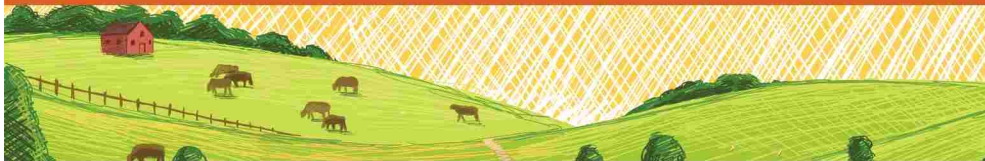


## Russell County, Kentucky Farms with American Indian or Alaska Native Producers<sup>a</sup>

**Data not available at this geographic level for farms with American Indian or Alaska Native Producers.**

<sup>a</sup> This race alone or in combination with other races.





## Russell County, Kentucky Farms with Asian Producers<sup>a</sup>

Data not available at this geographic level for farms with Asian Producers.

<sup>a</sup> This race alone or in combination with other races.





## **Russell County, Kentucky Farms with Black or African American Producers<sup>a</sup>**

**Data not available at this geographic level for farms with Black or African American Producers.**

<sup>a</sup> This race alone or in combination with other races.





## **Russell County, Kentucky Farms with Native Hawaiian or Other Pacific Islander Producers<sup>a</sup>**

**Data not available at this geographic level for farms with Native Hawaiian or Other Pacific Islander Producers.**

<sup>a</sup> This race alone or in combination with other races.







## Russell County, Kentucky Farms with White Producers<sup>a</sup>

Data not available at this geographic level for farms with White Producers.

<sup>a</sup> This race alone or in combination with other races.





## **Russell County, Kentucky Farms with Hispanic, Latino, or Spanish Producers**

Data not available at this geographic level for farms with Hispanic, Latino, or Spanish Producers.





## Russell County, Kentucky Farms with Female Producers

### Total and Per Farm Overview, 2017

	Farms with Female Producers	All Farms
Number of farms	345	672
Land in farms (acres)	48,632	92,485
Average size of farm (acres)	141	138
<b>Total</b>	(\$)	(\$)
Market value of products sold	12,498,000	37,513,000
Government payments	201,000	456,000
Farm-related income	1,030,000	1,568,000
Total farm production expenses	11,764,000	33,935,000
Net cash farm income	1,965,000	5,601,000
<b>Per farm average</b>	(\$)	(\$)
Market value of products sold	36,227	55,822
Government payments (average per farm receiving)	2,868	3,283
Farm-related income	9,537	8,294
Total farm production expenses	34,099	50,498
Net cash farm income	5,695	8,336

### Share of Sales by Type (%)

Crops	30
Livestock, poultry, and products	70

### Land in Farms by Use (%) <sup>b</sup>

Cropland	42
Pastureland	29
Woodland	26
Other	2

### Land Use Practices (% of farms)

No till	9
Reduced till	2
Intensive till	1
Cover crop	4

### Farms by Value of Sales

	Number	Percent <sup>b</sup>
Less than \$2,500	118	34
\$2,500 to \$4,999	53	15
\$5,000 to \$9,999	51	15
\$10,000 to \$24,999	35	10
\$25,000 to \$49,999	53	15
\$50,000 to \$99,999	14	4
\$100,000 or more	21	6
<b>Total</b>	345	100

### Farms by Size

	Number	Percent <sup>b</sup>
1 to 9 acres	25	7
10 to 49 acres	130	38
50 to 179 acres	114	33
180 to 499 acres	58	17
500 to 999 acres	14	4
1,000 + acres	4	1
<b>Total</b>	345	100

# 2017 CENSUS OF AGRICULTURE Race/Ethnicity/Gender Profile

## Market Value of Agricultural Products Sold

	Sales (\$1,000)	No. of Farms
<b>Total</b>	<b>12,498</b>	<b>345</b>
<b>Crops</b>	<b>3,808</b>	<b>140</b>
Grains, oilseeds, dry beans, dry peas	2,690	18
Tobacco	(D)	1
Cotton and cottonseed	-	-
Vegetables, melons, potatoes, sweet potatoes	49	7
Fruits, tree nuts, berries	(D)	3
Nursery, greenhouse, floriculture, sod	(D)	5
Cultivated Christmas trees, short rotation woody crops	-	-
Other crops and hay	895	116
<b>Livestock, poultry, and products</b>	<b>8,690</b>	<b>229</b>
Poultry and eggs	11	31
Cattle and calves	5,091	179
Milk from cows	2,776	10
Hogs and pigs	3	8
Sheep, goats, wool, mohair, milk	29	28
Horses, ponies, mules, burros, donkeys	(D)	15
Aquaculture	(D)	1
Other animals and animal products	14	11

## Total Producers <sup>c</sup>

361

<b>Age</b>	
<35	29
35 – 64	205
65 and older	127
<b>Race</b>	
American Indian/Alaska Native	3
Asian	-
Black/African American	-
Native Hawaiian/Pacific Islander	-
White	358
More than one race	-
<b>Primary occupation</b>	
Farming	107
Other	254
<b>Days worked off farm</b>	
None	135
1 to 199	77
200 +	149
<b>Other characteristics</b>	
Hispanic/Latino/Spanish	4
With military service	6
New and beginning farmers	78
<i>Average age (years)</i>	57.2

## Top Crops in Acres <sup>d</sup>

Forage (hay/haylage), all	10,667
Soybeans for beans	3,939
Corn for grain	1,534
Corn for silage	725
Tobacco	(D)

## Percent of farms that:

Have internet access	<b>73</b>
Farm organically	<b>-</b>
Sell directly to consumers	<b>8</b>
Hire farm labor	<b>22</b>
Are family farms	<b>98</b>

## Livestock Inventory (Dec 31, 2017)

Broilers and other meat-type chickens	-
Cattle and calves	14,469
Goats	360
Hogs and pigs	30
Horses and ponies	430
Layers	1,038
Pullets	60
Sheep and lambs	207
Turkeys	(D)

## Demographic Data in the Census of Agriculture

The agriculture census is a complete count of U.S. farms and ranches and the people who operate them. Demographic information is available at national, state, and county levels, and for classes of farm and congressional districts. Results from the 2017 Census and earlier are available through the searchable database Quick Stats, the new Census Data Query Tool, downloadable PDF reports, maps, and topic-specific Highlights and Profiles.

See also the video "What's New in the 2017 Census?" ([www.nass.usda.gov/Newsroom/Video/Features/index.php](http://www.nass.usda.gov/Newsroom/Video/Features/index.php)).

See 2017 Census of Agriculture, U.S. Summary and State Data, for complete footnotes, explanations, definitions, commodity descriptions, and methodology.

<sup>a</sup> This race alone or in combination with other races. <sup>b</sup> May not add to 100% due to rounding. <sup>c</sup> Data collected for a maximum of four producers per farm.

<sup>d</sup> Crop commodity names may be shortened; see full names at [www.nass.usda.gov/go/cropnames.pdf](http://www.nass.usda.gov/go/cropnames.pdf). <sup>e</sup> Position below the line does not indicate rank.

(D) Withheld to avoid disclosing data for individual operations. (NA) Not available. (Z) Less than half of the unit shown. (-) Represents zero.