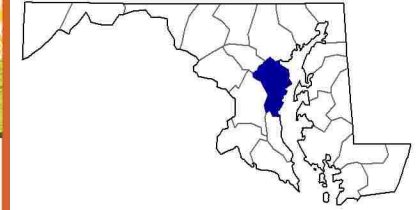


## Anne Arundel County, Maryland Farms with American Indian or Alaska Native Producers<sup>a</sup>

**Data not available at this geographic level for farms with American Indian or Alaska Native Producers.**

<sup>a</sup> This race alone or in combination with other races.



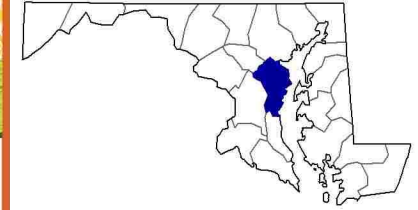


## Anne Arundel County, Maryland Farms with Asian Producers<sup>a</sup>

Data not available at this geographic level for farms with Asian Producers.

<sup>a</sup> This race alone or in combination with other races.



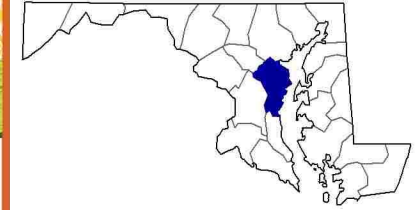


## Anne Arundel County, Maryland Farms with Black or African American Producers<sup>a</sup>

**Data not available at this geographic level for farms with Black or African American Producers.**

<sup>a</sup> This race alone or in combination with other races.





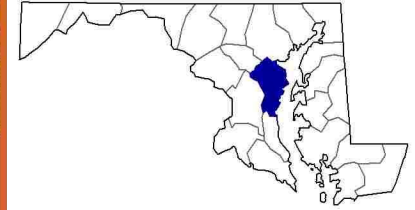
## Anne Arundel County, Maryland Farms with Native Hawaiian or Other Pacific Islander Producers<sup>a</sup>

Data not available at this geographic level for farms with Native Hawaiian or Other Pacific Islander Producers.

<sup>a</sup> This race alone or in combination with other races.





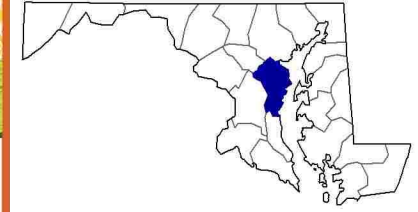


## Anne Arundel County, Maryland Farms with White Producers<sup>a</sup>

Data not available at this geographic level for farms with White Producers.

<sup>a</sup> This race alone or in combination with other races.

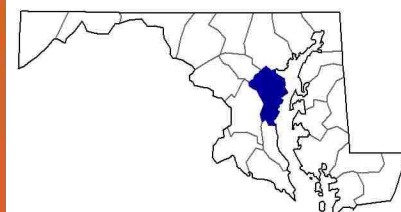
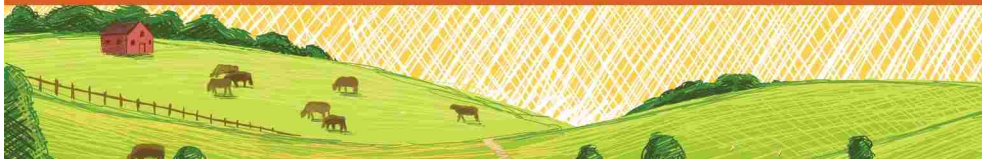




## **Anne Arundel County, Maryland Farms with Hispanic, Latino, or Spanish Producers**

Data not available at this geographic level for farms with Hispanic, Latino, or Spanish Producers.





## Anne Arundel County, Maryland Farms with Female Producers

### Total and Per Farm Overview, 2017

	Farms with Female Producers	All Farms
Number of farms	250	390
Land in farms (acres)	12,750	27,003
Average size of farm (acres)	51	69
<b>Total</b>	<b>(\$)</b>	<b>(\$)</b>
Market value of products sold	11,038,000	18,153,000
Government payments	49,000	322,000
Farm-related income	3,541,000	4,999,000
Total farm production expenses	12,521,000	19,851,000
Net cash farm income	2,107,000	3,624,000
<b>Per farm average</b>	<b>(\$)</b>	<b>(\$)</b>
Market value of products sold	44,150	46,547
Government payments (average per farm receiving)	3,734	11,505
Farm-related income	43,720	40,975
Total farm production expenses	50,083	50,899
Net cash farm income	8,426	9,291

### Share of Sales by Type (%)

Crops	55
Livestock, poultry, and products	45

### Land in Farms by Use (%) <sup>b</sup>

Cropland	33
Pastureland	20
Woodland	36
Other	11

### Land Use Practices (% of farms)

No till	12
Reduced till	4
Intensive till	6
Cover crop	11

### Farms by Value of Sales

	Number	Percent <sup>b</sup>
Less than \$2,500	118	47
\$2,500 to \$4,999	46	18
\$5,000 to \$9,999	23	9
\$10,000 to \$24,999	33	13
\$25,000 to \$49,999	11	4
\$50,000 to \$99,999	7	3
\$100,000 or more	12	5
<b>Total</b>	<b>250</b>	<b>100</b>

### Farms by Size

	Number	Percent <sup>b</sup>
1 to 9 acres	66	26
10 to 49 acres	107	43
50 to 179 acres	68	27
180 to 499 acres	5	2
500 to 999 acres	4	2
1,000 + acres	-	-
<b>Total</b>	<b>250</b>	<b>100</b>



# 2017 CENSUS OF AGRICULTURE Race/Ethnicity/Gender Profile

Market Value of Agricultural Products Sold			Total Producers <sup>c</sup>	286
	Sales (\$1,000)	No. of Farms		
<b>Total</b>	<b>11,038</b>	<b>250</b>	<b>Age</b>	
			<35	28
			35 – 64	176
			65 and older	82
<b>Crops</b>	<b>6,124</b>	<b>119</b>	<b>Race</b>	
Grains, oilseeds, dry beans, dry peas	698	24	American Indian/Alaska Native	-
Tobacco	-	-	Asian	1
Cotton and cottonseed	-	-	Black/African American	6
Vegetables, melons, potatoes, sweet potatoes	271	22	Native Hawaiian/Pacific Islander	3
Fruits, tree nuts, berries	(D)	10	White	274
Nursery, greenhouse, floriculture, sod	4,691	28	More than one race	2
Cultivated Christmas trees, short rotation woody crops	(D)	1		
Other crops and hay	322	57	<b>Primary occupation</b>	
			Farming	100
<b>Livestock, poultry, and products</b>	<b>4,913</b>	<b>108</b>	Other	186
Poultry and eggs	(D)	49	<b>Days worked off farm</b>	
Cattle and calves	178	21	None	114
Milk from cows	-	-	1 to 199	38
Hogs and pigs	69	16	200 +	134
Sheep, goats, wool, mohair, milk	(D)	14		
Horses, ponies, mules, burros, donkeys	417	35	<b>Other characteristics</b>	
Aquaculture	4,062	4	Hispanic/Latino/Spanish	6
Other animals and animal products	114	17	With military service	7
			New and beginning farmers	103
			<b>Average age (years)</b>	<b>56.7</b>
<b>Top Crops in Acres <sup>d</sup></b>		<b>Percent of farms that:</b>		
Forage (hay/haylage), all	1,740	Have internet access	<b>93</b>	
Soybeans for beans	805			
Corn for grain	493	Farm organically	<b>(Z)</b>	
Corn for silage	(D)			
Vegetables harvested, all	79	Sell directly to consumers	<b>15</b>	
<b>Livestock Inventory (Dec 31, 2017)</b>		Hire farm labor	<b>37</b>	
Broilers and other meat-type chickens	(D)			
Cattle and calves	643	Are family farms	<b>94</b>	
Goats	132			
Hogs and pigs	411			
Horses and ponies	1,342			
Layers	1,415			
Pullets	38			
Sheep and lambs	400			
Turkeys	24			

## Demographic Data in the Census of Agriculture

The agriculture census is a complete count of U.S. farms and ranches and the people who operate them. Demographic information is available at national, state, and county levels, and for classes of farm and congressional districts. Results from the 2017 Census and earlier are available through the searchable database Quick Stats, the new Census Data Query Tool, downloadable PDF reports, maps, and topic-specific Highlights and Profiles.

See also the video "What's New in the 2017 Census?" ([www.nass.usda.gov/Newsroom/VideoFeatures/index.php](http://www.nass.usda.gov/Newsroom/VideoFeatures/index.php)).

See 2017 Census of Agriculture, U.S. Summary and State Data, for complete footnotes, explanations, definitions, commodity descriptions, and methodology.

<sup>a</sup> This race alone or in combination with other races. <sup>b</sup> May not add to 100% due to rounding. <sup>c</sup> Data collected for a maximum of four producers per farm.

<sup>d</sup> Crop commodity names may be shortened; see full names at [www.nass.usda.gov/go/cropnames.pdf](http://www.nass.usda.gov/go/cropnames.pdf). <sup>e</sup> Position below the line does not indicate rank.

(D) Withheld to avoid disclosing data for individual operations. (NA) Not available. (Z) Less than half of the unit shown. (-) Represents zero.