

Cass County, Michigan Farms with American Indian or Alaska Native Producers^a

Data not available at this geographic level for farms with American Indian or Alaska Native Producers.

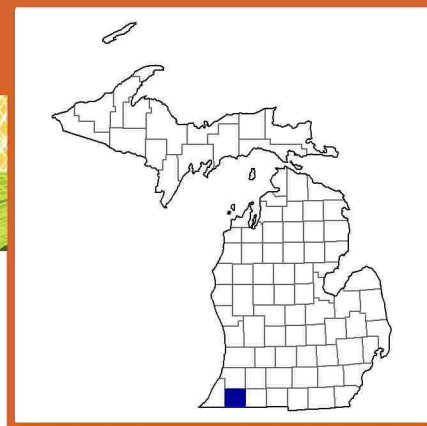
^a This race alone or in combination with other races.



Cass County, Michigan Farms with Asian Producers^a

Data not available at this geographic level for farms with Asian Producers.

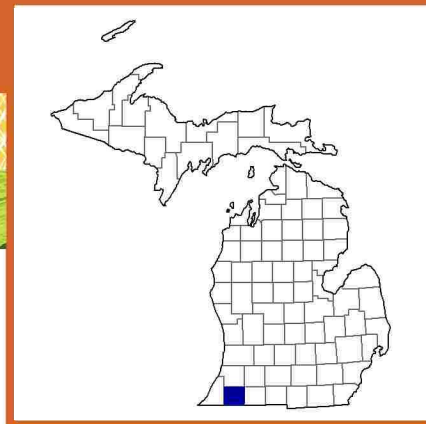
^a This race alone or in combination with other races.



Cass County, Michigan Farms with Black or African American Producers^a

Data not available at this geographic level for farms with Black or African American Producers.

^a This race alone or in combination with other races.



Cass County, Michigan Farms with Native Hawaiian or Other Pacific Islander Producers^a

Data not available at this geographic level for farms with Native Hawaiian or Other Pacific Islander Producers.

^a This race alone or in combination with other races.



Cass County, Michigan Farms with White Producers^a

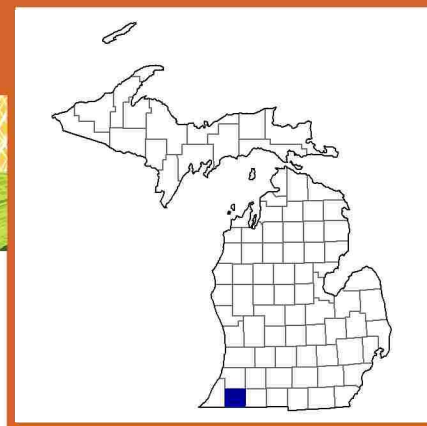
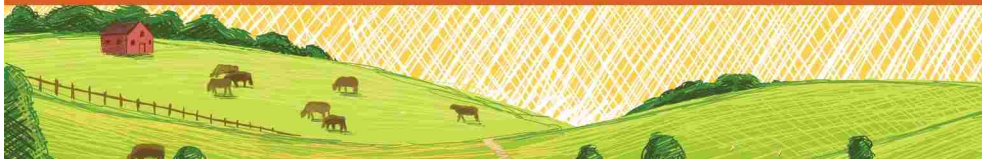
Data not available at this geographic level for farms with White Producers.

^a This race alone or in combination with other races.



Cass County, Michigan Farms with Hispanic, Latino, or Spanish Producers

Data not available at this geographic level for farms with Hispanic, Latino, or Spanish Producers.



Cass County, Michigan Farms with Female Producers

Total and Per Farm Overview, 2017

	Farms with Female Producers	All Farms
Number of farms	433	747
Land in farms (acres)	90,081	198,515
Average size of farm (acres)	208	266
Total	(\$)	(\$)
Market value of products sold	69,646,000	153,388,000
Government payments	2,023,000	4,103,000
Farm-related income	3,042,000	7,845,000
Total farm production expenses	64,191,000	136,525,000
Net cash farm income	10,521,000	28,810,000
Per farm average	(\$)	(\$)
Market value of products sold	160,846	205,338
Government payments (average per farm receiving)	13,225	12,902
Farm-related income	17,091	24,747
Total farm production expenses	148,247	182,765
Net cash farm income	24,299	38,567

Share of Sales by Type (%)

Crops	63
Livestock, poultry, and products	37

Land in Farms by Use (%) ^b

Cropland	84
Pastureland	2
Woodland	8
Other	5

Land Use Practices (% of farms)

No till	22
Reduced till	19
Intensive till	12
Cover crop	10

Farms by Value of Sales

	Number	Percent ^b
Less than \$2,500	181	42
\$2,500 to \$4,999	69	16
\$5,000 to \$9,999	22	5
\$10,000 to \$24,999	47	11
\$25,000 to \$49,999	18	4
\$50,000 to \$99,999	28	6
\$100,000 or more	68	16
Total	433	100

Farms by Size

	Number	Percent ^b
1 to 9 acres	54	12
10 to 49 acres	204	47
50 to 179 acres	98	23
180 to 499 acres	36	8
500 to 999 acres	24	6
1,000 + acres	17	4
Total	433	100



2017 CENSUS OF AGRICULTURE *Race/Ethnicity/Gender Profile*

Market Value of Agricultural Products Sold			Total Producers ^c	451
	Sales (\$1,000)	No. of Farms		
Total	69,646	433	Age	
			<35	45
			35 – 64	281
			65 and older	125
Crops	43,774	268	Race	
Grains, oilseeds, dry beans, dry peas	35,092	140	American Indian/Alaska Native	8
Tobacco	-	-	Asian	2
Cotton and cottonseed	-	-	Black/African American	13
Vegetables, melons, potatoes, sweet potatoes	3,079	29	Native Hawaiian/Pacific Islander	-
Fruits, tree nuts, berries	2,081	12	White	419
Nursery, greenhouse, floriculture, sod	2,832	18	More than one race	9
Cultivated Christmas trees, short rotation			Primary occupation	
woody crops	(D)	1	Farming	128
Other crops and hay	(D)	124	Other	323
Livestock, poultry, and products	25,873	167	Days worked off farm	
Poultry and eggs	191	45	None	162
Cattle and calves	1,115	80	1 to 199	83
Milk from cows	(D)	2	200 +	206
Hogs and pigs	23,756	26	Other characteristics	
Sheep, goats, wool, mohair, milk	(D)	41	Hispanic/Latino/Spanish	8
Horses, ponies, mules, burros, donkeys	(D)	23	With military service	10
Aquaculture	(D)	1	New and beginning farmers	138
Other animals and animal products	(D)	16		
			Average age (years)	55.5
Top Crops in Acres ^d			Demographic Data in the Census of Agriculture	
Corn for grain	35,416	Have internet access	86	The agriculture census is a complete count of U.S. farms and ranches and the people who operate them. Demographic information is available at national, state, and county levels, and for classes of farm and congressional districts. Results from the 2017 Census and earlier are available through the searchable database Quick Stats, the new Census Data Query Tool, downloadable PDF reports, maps, and topic-specific Highlights and Profiles. See also the video “What’s New in the 2017 Census?”(www.nass.usda.gov/Newsroom/VideoFeatures/index.php).
Soybeans for beans	28,719	Farm organically	1	
Forage (hay/haylage), all	3,559	Sell directly to consumers	10	
Vegetables harvested, all	1,872	Hire farm labor	20	
Beans, snap	1,231	Are family farms	99	
Livestock Inventory (Dec 31, 2017)				
Broilers and other meat-type chickens	16,502			
Cattle and calves	3,032			
Goats	387			
Hogs and pigs	81,983			
Horses and ponies	518			
Layers	2,216			
Pullets	275			
Sheep and lambs	1,269			
Turkeys	419			

See 2017 Census of Agriculture, U.S. Summary and State Data, for complete footnotes, explanations, definitions, commodity descriptions, and methodology.

^a This race alone or in combination with other races. ^b May not add to 100% due to rounding. ^c Data collected for a maximum of four producers per farm.

^d Crop commodity names may be shortened; see full names at www.nass.usda.gov/go/cropnames.pdf. ^e Position below the line does not indicate rank.

(D) Withheld to avoid disclosing data for individual operations. (NA) Not available. (Z) Less than half of the unit shown. (-) Represents zero.