



## **Mackinac County, Michigan Farms with American Indian or Alaska Native Producers<sup>a</sup>**

**Data not available at this geographic level for farms with American Indian or Alaska Native Producers.**

<sup>a</sup> This race alone or in combination with other races.



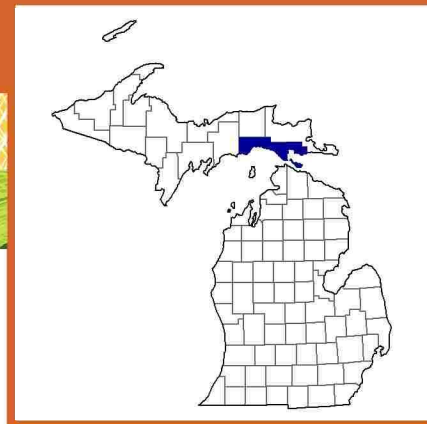


## Mackinac County, Michigan Farms with Asian Producers<sup>a</sup>

Data not available at this geographic level for farms with Asian Producers.

<sup>a</sup> This race alone or in combination with other races.



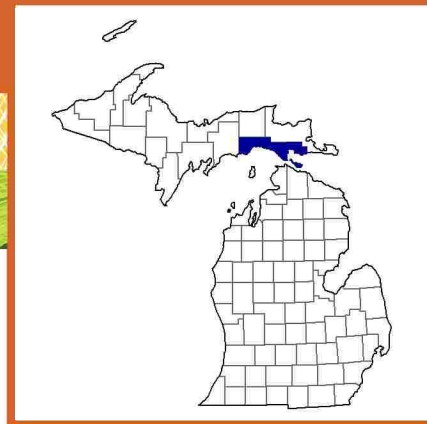


## **Mackinac County, Michigan Farms with Black or African American Producers<sup>a</sup>**

**Data not available at this geographic level for farms with Black or African American Producers.**

<sup>a</sup> This race alone or in combination with other races.





## Mackinac County, Michigan Farms with Native Hawaiian or Other Pacific Islander Producers<sup>a</sup>

Data not available at this geographic level for farms with Native Hawaiian or Other Pacific Islander Producers.

<sup>a</sup> This race alone or in combination with other races.





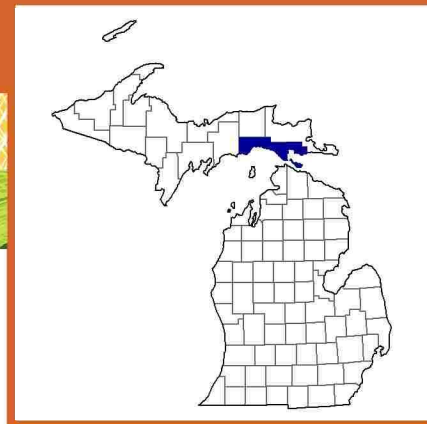


## Mackinac County, Michigan Farms with White Producers<sup>a</sup>

Data not available at this geographic level for farms with White Producers.

<sup>a</sup> This race alone or in combination with other races.

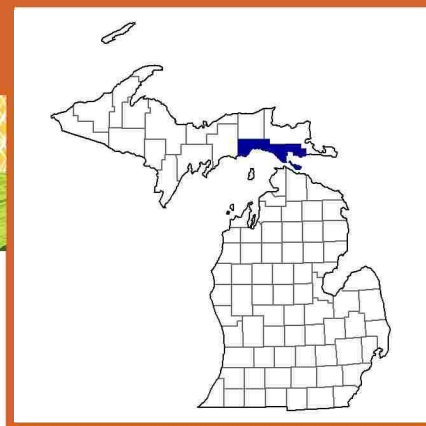
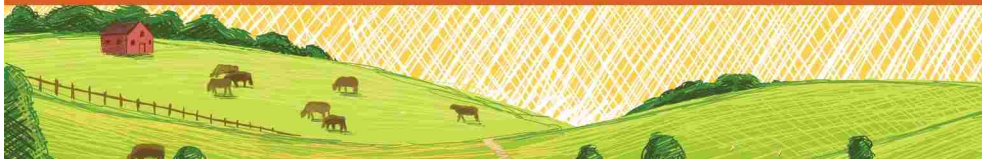




## **Mackinac County, Michigan Farms with Hispanic, Latino, or Spanish Producers**

Data not available at this geographic level for farms with Hispanic, Latino, or Spanish Producers.





## Mackinac County, Michigan Farms with Female Producers

### Total and Per Farm Overview, 2017

	Farms with Female Producers	All Farms
Number of farms	51	101
Land in farms (acres)	9,132	25,046
Average size of farm (acres)	179	248
<b>Total</b>	<b>(\$)</b>	<b>(\$)</b>
Market value of products sold	3,634,000	7,140,000
Government payments	81,000	173,000
Farm-related income	38,000	300,000
Total farm production expenses	2,811,000	5,621,000
Net cash farm income	942,000	1,991,000
<b>Per farm average</b>	<b>(\$)</b>	<b>(\$)</b>
Market value of products sold	71,247	70,690
Government payments (average per farm receiving)	11,525	12,339
Farm-related income	3,198	13,041
Total farm production expenses	55,120	55,657
Net cash farm income	18,461	19,713

### Share of Sales by Type (%)

Crops	5
Livestock, poultry, and products	95

### Land in Farms by Use (%) <sup>b</sup>

Cropland	52
Pastureland	7
Woodland	34
Other	7

### Land Use Practices (% of farms)

No till	8
Reduced till	6
Intensive till	18
Cover crop	12

### Farms by Value of Sales

	Number	Percent <sup>b</sup>
Less than \$2,500	17	33
\$2,500 to \$4,999	14	27
\$5,000 to \$9,999	4	8
\$10,000 to \$24,999	9	18
\$25,000 to \$49,999	2	4
\$50,000 to \$99,999	-	-
\$100,000 or more	5	10
<b>Total</b>	<b>51</b>	<b>100</b>

### Farms by Size

	Number	Percent <sup>b</sup>
1 to 9 acres	5	10
10 to 49 acres	17	33
50 to 179 acres	18	35
180 to 499 acres	8	16
500 to 999 acres	-	-
1,000 + acres	3	6
<b>Total</b>	<b>51</b>	<b>100</b>



# 2017 CENSUS OF AGRICULTURE Race/Ethnicity/Gender Profile

Market Value of Agricultural Products Sold			Total Producers <sup>c</sup>	55
	Sales (\$1,000)	No. of Farms		
<b>Total</b>	<b>3,634</b>	<b>51</b>	<b>Age</b>	
			<35	5
			35 – 64	42
			65 and older	8
<b>Crops</b>	<b>169</b>	<b>29</b>	<b>Race</b>	
Grains, oilseeds, dry beans, dry peas	(D)	2	American Indian/Alaska Native	1
Tobacco	-	-	Asian	2
Cotton and cottonseed	-	-	Black/African American	-
Vegetables, melons, potatoes, sweet potatoes	(D)	9	Native Hawaiian/Pacific Islander	-
Fruits, tree nuts, berries	22	5	White	48
Nursery, greenhouse, floriculture, sod	37	4	More than one race	4
Cultivated Christmas trees, short rotation woody crops	-	-	<b>Primary occupation</b>	
Other crops and hay	87	21	Farming	12
			Other	43
<b>Livestock, poultry, and products</b>	<b>3,464</b>	<b>28</b>	<b>Days worked off farm</b>	
Poultry and eggs	4	6	None	17
Cattle and calves	(D)	14	1 to 199	16
Milk from cows	(D)	2	200 +	22
Hogs and pigs	4	3	<b>Other characteristics</b>	
Sheep, goats, wool, mohair, milk	25	8	Hispanic/Latino/Spanish	-
Horses, ponies, mules, burros, donkeys	(D)	1	With military service	2
Aquaculture	-	-	New and beginning farmers	25
Other animals and animal products	10	5	<b>Average age (years)</b>	<b>51.3</b>
<b>Top Crops in Acres <sup>d</sup></b>		<b>Percent of farms that:</b>	<b>Demographic Data in the Census of Agriculture</b>	
Forage (hay/haylage), all	3,755	Have internet access	<b>84</b>	<p>The agriculture census is a complete count of U.S. farms and ranches and the people who operate them. Demographic information is available at national, state, and county levels, and for classes of farm and congressional districts. Results from the 2017 Census and earlier are available through the searchable database Quick Stats, the new Census Data Query Tool, downloadable PDF reports, maps, and topic-specific Highlights and Profiles.</p> <p>See also the video “What’s New in the 2017 Census?” (<a href="http://www.nass.usda.gov/Newsroom/VideoFeatures/index.php">www.nass.usda.gov/Newsroom/VideoFeatures/index.php</a>).</p>
Corn for silage	(D)	Farm organically	<b>4</b>	
Oats for grain	(D)	Sell directly to consumers	<b>18</b>	
Vegetables harvested, all	20	Hire farm labor	<b>18</b>	
Apples	(D)	Are family farms	<b>94</b>	
<b>Livestock Inventory (Dec 31, 2017)</b>				
Broilers and other meat-type chickens	(D)			
Cattle and calves	2,370			
Goats	5			
Hogs and pigs	(D)			
Horses and ponies	61			
Layers	227			
Pullets	-			
Sheep and lambs	232			
Turkeys	28			

See 2017 Census of Agriculture, U.S. Summary and State Data, for complete footnotes, explanations, definitions, commodity descriptions, and methodology.

<sup>a</sup> This race alone or in combination with other races. <sup>b</sup> May not add to 100% due to rounding. <sup>c</sup> Data collected for a maximum of four producers per farm.

<sup>d</sup> Crop commodity names may be shortened; see full names at [www.nass.usda.gov/go/cropnames.pdf](http://www.nass.usda.gov/go/cropnames.pdf). <sup>e</sup> Position below the line does not indicate rank.

(D) Withheld to avoid disclosing data for individual operations. (NA) Not available. (Z) Less than half of the unit shown. (-) Represents zero.