



Monroe County, Michigan Farms with American Indian or Alaska Native Producers^a

Data not available at this geographic level for farms with American Indian or Alaska Native Producers.

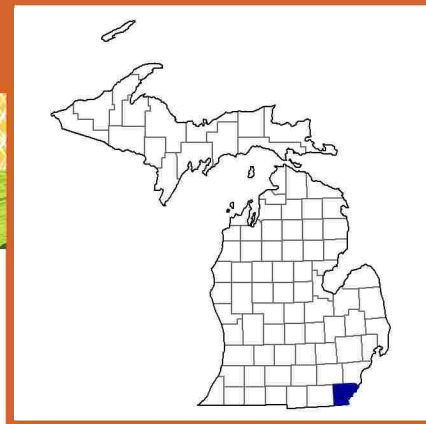
^a This race alone or in combination with other races.



Monroe County, Michigan Farms with Asian Producers^a

Data not available at this geographic level for farms with Asian Producers.

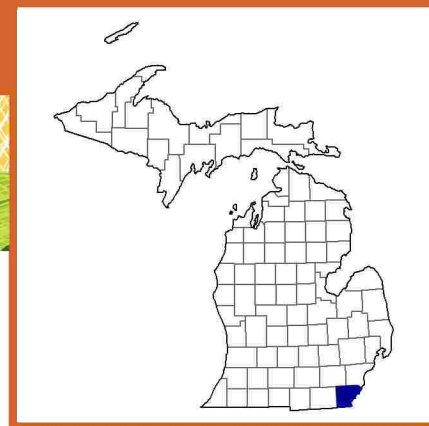
^a This race alone or in combination with other races.



Monroe County, Michigan Farms with Black or African American Producers^a

Data not available at this geographic level for farms with Black or African American Producers.

^a This race alone or in combination with other races.



Monroe County, Michigan Farms with Native Hawaiian or Other Pacific Islander Producers^a

Data not available at this geographic level for farms with Native Hawaiian or Other Pacific Islander Producers.

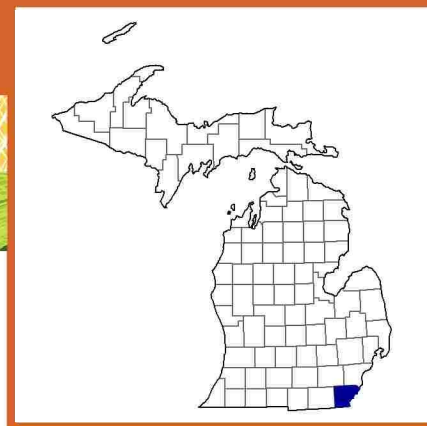
^a This race alone or in combination with other races.



Monroe County, Michigan Farms with White Producers^a

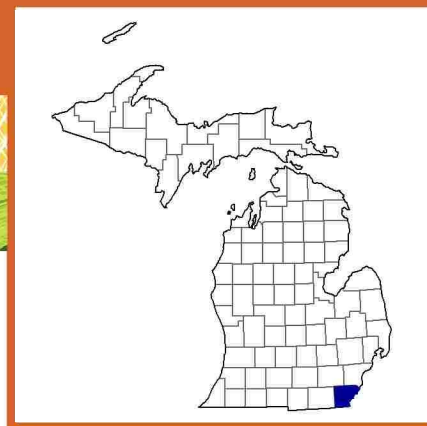
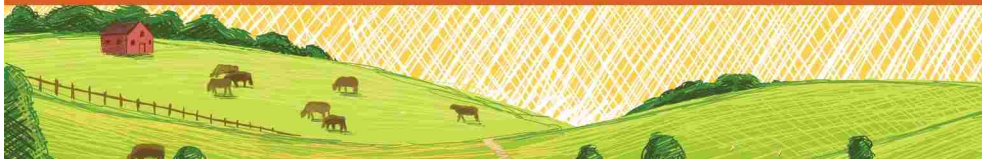
Data not available at this geographic level for farms with White Producers.

^a This race alone or in combination with other races.



Monroe County, Michigan Farms with Hispanic, Latino, or Spanish Producers

Data not available at this geographic level for farms with Hispanic, Latino, or Spanish Producers.



Monroe County, Michigan Farms with Female Producers

Total and Per Farm Overview, 2017

	Farms with Female Producers	All Farms
Number of farms	504	1,085
Land in farms (acres)	79,859	209,838
Average size of farm (acres)	158	193
Total	(\$)	(\$)
Market value of products sold	103,733,000	174,504,000
Government payments	1,763,000	4,555,000
Farm-related income	3,757,000	6,235,000
Total farm production expenses	96,088,000	157,725,000
Net cash farm income	13,166,000	27,569,000
Per farm average	(\$)	(\$)
Market value of products sold	205,820	160,834
Government payments (average per farm receiving)	10,190	9,609
Farm-related income	13,916	10,640
Total farm production expenses	190,651	145,368
Net cash farm income	26,122	25,409

Share of Sales by Type (%)

Crops	97
Livestock, poultry, and products	3

Land in Farms by Use (%) ^b

Cropland	91
Pastureland	2
Woodland	4
Other	3

Land Use Practices (% of farms)

No till	16
Reduced till	14
Intensive till	24
Cover crop	10

Farms by Value of Sales

	Number	Percent ^b
Less than \$2,500	226	45
\$2,500 to \$4,999	36	7
\$5,000 to \$9,999	42	8
\$10,000 to \$24,999	53	11
\$25,000 to \$49,999	21	4
\$50,000 to \$99,999	32	6
\$100,000 or more	94	19
Total	504	100

Farms by Size

	Number	Percent ^b
1 to 9 acres	112	22
10 to 49 acres	236	47
50 to 179 acres	66	13
180 to 499 acres	46	9
500 to 999 acres	24	5
1,000 + acres	20	4
Total	504	100



2017 CENSUS OF AGRICULTURE *Race/Ethnicity/Gender Profile*

Market Value of Agricultural Products Sold			Total Producers ^c	542
	Sales (\$1,000)	No. of Farms		
Total	103,733	504	Age	
			<35	35
			35 – 64	353
			65 and older	154
Crops	100,558	323	Race	
Grains, oilseeds, dry beans, dry peas	33,205	184	American Indian/Alaska Native	-
Tobacco	-	-	Asian	-
Cotton and cottonseed	-	-	Black/African American	5
Vegetables, melons, potatoes, sweet potatoes	19,438	39	Native Hawaiian/Pacific Islander	-
Fruits, tree nuts, berries	636	21	White	531
Nursery, greenhouse, floriculture, sod	45,408	31	More than one race	6
Cultivated Christmas trees, short rotation woody crops	1,532	12	Primary occupation	
Other crops and hay	341	106	Farming	180
			Other	362
Livestock, poultry, and products	3,175	126	Days worked off farm	
Poultry and eggs	55	55	None	206
Cattle and calves	1,890	48	1 to 199	127
Milk from cows	(D)	2	200 +	209
Hogs and pigs	(D)	19	Other characteristics	
Sheep, goats, wool, mohair, milk	104	29	Hispanic/Latino/Spanish	4
Horses, ponies, mules, burros, donkeys	109	12	With military service	8
Aquaculture	-	-	New and beginning farmers	146
Other animals and animal products	407	22		
			Average age (years)	57.1
Top Crops in Acres ^d			Demographic Data in the Census of Agriculture	
Soybeans for beans	35,858	Have internet access	89	The agriculture census is a complete count of U.S. farms and ranches and the people who operate them. Demographic information is available at national, state, and county levels, and for classes of farm and congressional districts. Results from the 2017 Census and earlier are available through the searchable database Quick Stats, the new Census Data Query Tool, downloadable PDF reports, maps, and topic-specific Highlights and Profiles. See also the video “What’s New in the 2017 Census?”(www.nass.usda.gov/Newsroom/VideoFeatures/index.php).
Corn for grain	22,931	Farm organically	-	
Wheat for grain, all	5,941	Sell directly to consumers	10	
Vegetables harvested, all	3,310	Hire farm labor	27	
Forage (hay/haylage), all	1,884	Are family farms	98	
Livestock Inventory (Dec 31, 2017)				
Broilers and other meat-type chickens	1,825			
Cattle and calves	1,302			
Goats	750			
Hogs and pigs	198			
Horses and ponies	1,059			
Layers	2,683			
Pullets	519			
Sheep and lambs	198			
Turkeys	286			

See 2017 Census of Agriculture, U.S. Summary and State Data, for complete footnotes, explanations, definitions, commodity descriptions, and methodology.

^a This race alone or in combination with other races. ^b May not add to 100% due to rounding. ^c Data collected for a maximum of four producers per farm.

^d Crop commodity names may be shortened; see full names at www.nass.usda.gov/go/cropnames.pdf. ^e Position below the line does not indicate rank.

(D) Withheld to avoid disclosing data for individual operations. (NA) Not available. (Z) Less than half of the unit shown. (-) Represents zero.