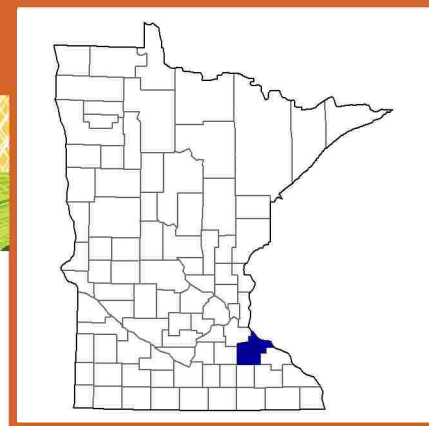


## Goodhue County, Minnesota Farms with American Indian or Alaska Native Producers<sup>a</sup>

**Data not available at this geographic level for farms with American Indian or Alaska Native Producers.**

<sup>a</sup> This race alone or in combination with other races.



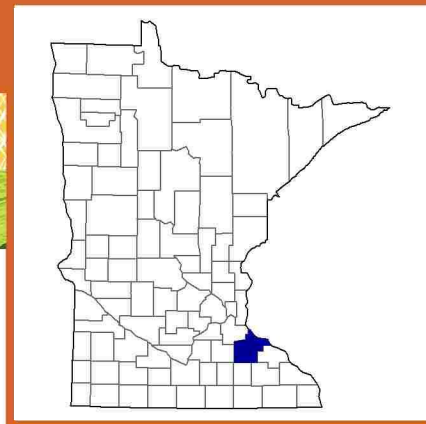


## Goodhue County, Minnesota Farms with Asian Producers<sup>a</sup>

Data not available at this geographic level for farms with Asian Producers.

<sup>a</sup> This race alone or in combination with other races.



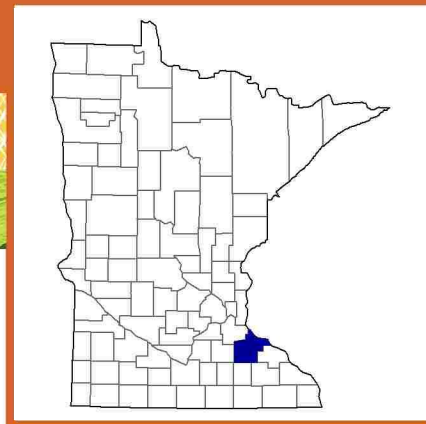


## Goodhue County, Minnesota Farms with Black or African American Producers<sup>a</sup>

**Data not available at this geographic level for farms with Black or African American Producers.**

<sup>a</sup> This race alone or in combination with other races.





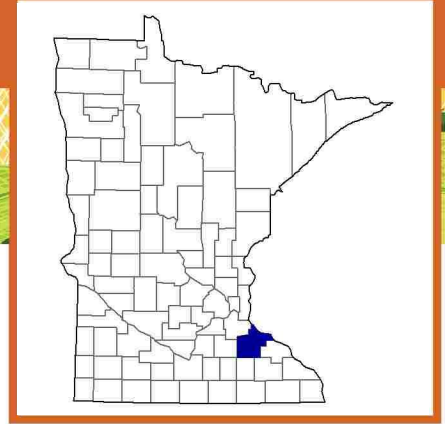
## Goodhue County, Minnesota Farms with Native Hawaiian or Other Pacific Islander Producers<sup>a</sup>

Data not available at this geographic level for farms with Native Hawaiian or Other Pacific Islander Producers.

<sup>a</sup> This race alone or in combination with other races.





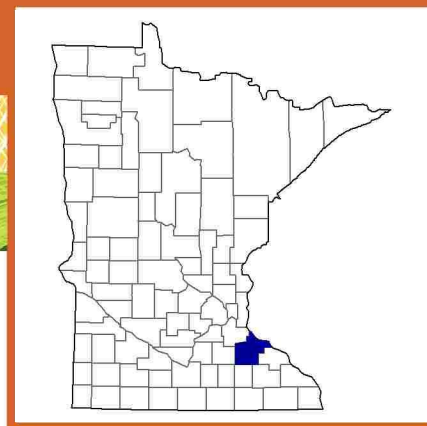


## Goodhue County, Minnesota Farms with White Producers<sup>a</sup>

Data not available at this geographic level for farms with White Producers.

<sup>a</sup> This race alone or in combination with other races.

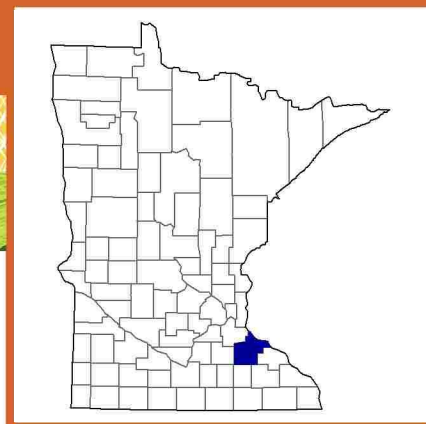
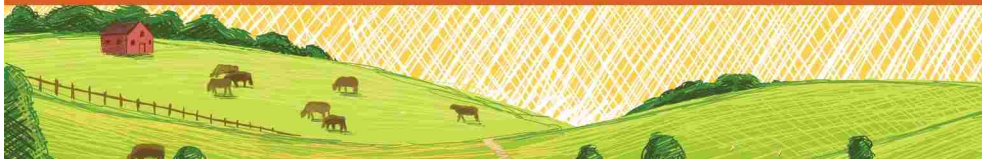




## **Goodhue County, Minnesota Farms with Hispanic, Latino, or Spanish Producers**

Data not available at this geographic level for farms with Hispanic, Latino, or Spanish Producers.





## Goodhue County, Minnesota Farms with Female Producers

### Total and Per Farm Overview, 2017

|   | Farms with<br>Female<br>Producers | All<br>Farms |
|---|-----------------------------------|--------------|
| Number of farms                                     | 738                               | 1,461        |
| Land in farms (acres)                               | 172,334                           | 384,651      |
| Average size of farm (acres)                        | 234                               | 263          |
| <b>Total</b>  | <b>(\$)</b>                       | <b>(\$)</b>  |
| Market value of products sold                       | 148,783,000                       | 348,588,000  |
| Government payments                                 | 5,562,000                         | 11,779,000   |
| Farm-related income                                 | 7,884,000                         | 18,215,000   |
| Total farm production expenses                      | 129,613,000                       | 291,241,000  |
| Net cash farm income                                | 32,616,000                        | 87,341,000   |
| <b>Per farm average</b>                             | <b>(\$)</b>                       | <b>(\$)</b>  |
| Market value of products sold                       | 201,603                           | 238,596      |
| Government payments<br>(average per farm receiving) | 14,599                            | 13,586       |
| Farm-related income                                 | 15,162                            | 16,960       |
| Total farm production expenses                      | 175,627                           | 199,344      |
| Net cash farm income                                | 44,195                            | 59,782       |

### Share of Sales by Type (%)

|                                  |    |
|----------------------------------|----|
| Crops                            | 52 |
| Livestock, poultry, and products | 48 |

### Land in Farms by Use (%) <sup>b</sup>

|             |    |
|-------------|----|
| Cropland    | 85 |
| Pastureland | 5  |
| Woodland    | 6  |
| Other       | 4  |

### Land Use Practices (% of farms)

|                |    |
|----------------|----|
| No till        | 12 |
| Reduced till   | 28 |
| Intensive till | 18 |
| Cover crop     | 12 |

### Farms by Value of Sales

|                      | Number     | Percent <sup>b</sup> |
|----------------------|------------|----------------------|
| Less than \$2,500    | 244        | 33                   |
| \$2,500 to \$4,999   | 49         | 7                    |
| \$5,000 to \$9,999   | 69         | 9                    |
| \$10,000 to \$24,999 | 61         | 8                    |
| \$25,000 to \$49,999 | 39         | 5                    |
| \$50,000 to \$99,999 | 72         | 10                   |
| \$100,000 or more    | 204        | 28                   |
| <b>Total</b>         | <b>738</b> | <b>100</b>           |

### Farms by Size

|                  | Number     | Percent <sup>b</sup> |
|------------------|------------|----------------------|
| 1 to 9 acres     | 109        | 15                   |
| 10 to 49 acres   | 229        | 31                   |
| 50 to 179 acres  | 193        | 26                   |
| 180 to 499 acres | 136        | 18                   |
| 500 to 999 acres | 46         | 6                    |
| 1,000 + acres    | 25         | 3                    |
| <b>Total</b>     | <b>738</b> | <b>100</b>           |



## 2017 CENSUS OF AGRICULTURE Race/Ethnicity/Gender Profile

| Market Value of Agricultural Products Sold                |                    |                            | Total Producers <sup>c</sup>                  | 791  |  |
|---|--------------------|----------------------------|---|--|--|
|   | Sales<br>(\$1,000) | No. of<br>Farms            |   |  |  |
| Total   | 148,783            | 738                        | Age   |  |  |
|   |                    |                            | <35   | 68   |  |
|   |                    |                            | 35 – 64                                       | 537  |  |
|   |                    |                            | 65 and older                                  | 186  |  |
| Crops   | 77,902             | 423                        | Race  |  |  |
| Grains, oilseeds, dry beans, dry peas                     | 73,517             | 310                        | American Indian/Alaska Native                 | 2  |  |
| Tobacco   | -                  | -                          | Asian   | 2  |  |
| Cotton and cottonseed                                     | -                  | -                          | Black/African American                        | -  |  |
| Vegetables, melons, potatoes, sweet potatoes              | 1,853              | 34                         | Native Hawaiian/Pacific Islander              | 1  |  |
| Fruits, tree nuts, berries                                | (D)                | 23                         | White   | 775  |  |
| Nursery, greenhouse, floriculture, sod                    | 1,238              | 13                         | More than one race                            | 11   |  |
| Cultivated Christmas trees, short rotation<br>woody crops | (D)                | 1                          |   |  |  |
| Other crops and hay                                       | 1,162              | 159                        | Primary occupation                            |  |  |
|   |                    |                            | Farming                                       | 246  |  |
|   |                    |                            | Other   | 545  |  |
| Livestock, poultry, and products                          | 70,881             | 391                        | Days worked off farm                          |  |  |
| Poultry and eggs  | 4,153              | 97                         | None  | 291  |  |
| Cattle and calves   | 14,783             | 267                        | 1 to 199                                      | 167  |  |
| Milk from cows  | 44,356             | 68                         | 200 +   | 333  |  |
| Hogs and pigs   | 7,148              | 48                         |   |  |  |
| Sheep, goats, wool, mohair, milk                          | 304                | 90                         | Other characteristics                         |  |  |
| Horses, ponies, mules, burros, donkeys                    | (D)                | 26                         | Hispanic/Latino/Spanish                       | 2  |  |
| Aquaculture   | -                  | -                          | With military service                         | 7  |  |
| Other animals and animal products                         | (D)                | 22                         | New and beginning farmers                     | 174  |  |
|   |                    |                            | Average age (years)                           | 55.5   |  |
| Top Crops in Acres <sup>d</sup>                           |                    |                            | Demographic Data in the Census of Agriculture |  |  |
| Corn for grain  | 68,836             | Have internet access       | 88  | The agriculture census is a complete count of U.S. farms and ranches and the people who operate them. Demographic information is available at national, state, and county levels, and for classes of farm and congressional districts. Results from the 2017 Census and earlier are available through the searchable database Quick Stats, the new Census Data Query Tool, downloadable PDF reports, maps, and topic-specific Highlights and Profiles.<br><br>See also the video “What’s New in the 2017 Census?”( <a href="http://www.nass.usda.gov/Newsroom/VideoFeatures/index.php">www.nass.usda.gov/Newsroom/VideoFeatures/index.php</a> ). |  |
| Soybeans for beans  | 51,759             | Farm organically           | 3   |  |  |
| Forage (hay/haylage), all                                 | 12,059             | Sell directly to consumers | 10  |  |  |
| Corn for silage   | 5,028              | Hire farm labor            | 28  |  |  |
| Vegetables harvested, all                                 | 1,318              | Are family farms           | 97  |  |  |
| Livestock Inventory (Dec 31, 2017)                        |                    |                            |   |  |  |
| Broilers and other meat-type chickens                     | 1,121              |                            |   |  |  |
| Cattle and calves   | 32,192             |                            |   |  |  |
| Goats   | 866                |                            |   |  |  |
| Hogs and pigs   | 20,166             |                            |   |  |  |
| Horses and ponies   | 875                |                            |   |  |  |
| Layers  | 3,799              |                            |   |  |  |
| Pullets   | 453                |                            |   |  |  |
| Sheep and lambs   | 1,529              |                            |   |  |  |
| Turkeys   | 68,043             |                            |   |  |  |

See 2017 Census of Agriculture, U.S. Summary and State Data, for complete footnotes, explanations, definitions, commodity descriptions, and methodology.

<sup>a</sup> This race alone or in combination with other races. <sup>b</sup> May not add to 100% due to rounding. <sup>c</sup> Data collected for a maximum of four producers per farm.

<sup>d</sup> Crop commodity names may be shortened; see full names at [www.nass.usda.gov/go/cropnames.pdf](http://www.nass.usda.gov/go/cropnames.pdf). <sup>e</sup> Position below the line does not indicate rank.

(D) Withheld to avoid disclosing data for individual operations. (NA) Not available. (Z) Less than half of the unit shown. (-) Represents zero.