

## Greene County, Missouri Farms with American Indian or Alaska Native Producers<sup>a</sup>

### Total and Per Farm Overview, 2017

	Farms with American Indian/Alaska Native Producers	All Farms
Number of farms	39	1,857
Land in farms (acres)	3,449	223,205
Average size of farm (acres)	88	120
<b>Total</b>	<b>(\$)</b>	<b>(\$)</b>
Market value of products sold	519,000	38,726,000
Government payments	33,000	807,000
Farm-related income	39,000	2,927,000
Total farm production expenses	618,000	48,482,000
Net cash farm income	-27,000	-6,022,000
<b>Per farm average</b>	<b>(\$)</b>	<b>(\$)</b>
Market value of products sold	13,309	20,854
Government payments (average per farm receiving)	8,160	7,081
Farm-related income	2,786	6,775
Total farm production expenses	15,844	26,108
Net cash farm income	-698	-3,243

### Share of Sales by Type (%)

Crops	31
Livestock, poultry, and products	69

### Land in Farms by Use (%) <sup>b</sup>

Cropland	57
Pastureland	38
Woodland	2
Other	2

### Land Use Practices (% of farms)

No till	8
Reduced till	-
Intensive till	5
Cover crop	8

### Farms by Value of Sales

	Number	Percent <sup>b</sup>
Less than \$2,500	9	23
\$2,500 to \$4,999	8	21
\$5,000 to \$9,999	8	21
\$10,000 to \$24,999	8	21
\$25,000 to \$49,999	4	10
\$50,000 to \$99,999	2	5
\$100,000 or more	-	-
<b>Total</b>	<b>39</b>	<b>100</b>

### Farms by Size

	Number	Percent <sup>b</sup>
1 to 9 acres	11	28
10 to 49 acres	14	36
50 to 179 acres	6	15
180 to 499 acres	7	18
500 to 999 acres	1	3
1,000 + acres	-	-
<b>Total</b>	<b>39</b>	<b>100</b>



47



## Greene County, Missouri Farms with Asian Producers<sup>a</sup>

Data not available at this geographic level for farms with Asian Producers.

<sup>a</sup> This race alone or in combination with other races.





## Greene County, Missouri Farms with Black or African American Producers<sup>a</sup>

Data not available at this geographic level for farms with Black or African American Producers.

<sup>a</sup> This race alone or in combination with other races.





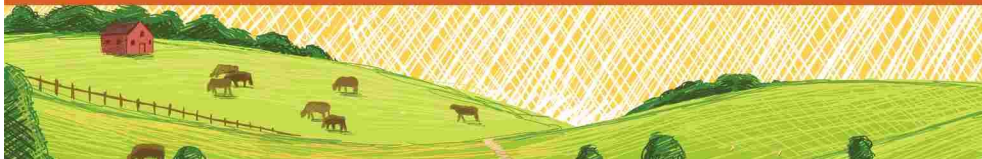
## Greene County, Missouri Farms with Native Hawaiian or Other Pacific Islander Producers<sup>a</sup>

Data not available at this geographic level for farms with Native Hawaiian or Other Pacific Islander Producers.

<sup>a</sup> This race alone or in combination with other races.







## Greene County, Missouri

### Farms with White Producers<sup>a</sup>

#### Total and Per Farm Overview, 2017

	Farms with White Producers	All Farms
Number of farms	1,843	1,857
Land in farms (acres)	221,000	223,205
Average size of farm (acres)	120	120
<b>Total</b>	<b>(\$)</b>	<b>(\$)</b>
Market value of products sold	38,463,000	38,726,000
Government payments	807,000	807,000
Farm-related income	2,919,000	2,927,000
Total farm production expenses	48,242,000	48,482,000
Net cash farm income	-6,053,000	-6,022,000
<b>Per farm average</b>	<b>(\$)</b>	<b>(\$)</b>
Market value of products sold	20,870	20,854
Government payments (average per farm receiving)	7,081	7,081
Farm-related income	6,820	6,775
Total farm production expenses	26,176	26,108
Net cash farm income	-3,284	-3,243

#### Share of Sales by Type (%)

Crops	21
Livestock, poultry, and products	79

#### Land in Farms by Use (%) <sup>b</sup>

Cropland	35
Pastureland	48
Woodland	13
Other	5

#### Land Use Practices (% of farms)

No till	4
Reduced till	2
Intensive till	2
Cover crop	2

#### Farms by Value of Sales

	Number	Percent <sup>b</sup>
Less than \$2,500	759	41
\$2,500 to \$4,999	247	13
\$5,000 to \$9,999	259	14
\$10,000 to \$24,999	269	15
\$25,000 to \$49,999	142	8
\$50,000 to \$99,999	90	5
\$100,000 or more	77	4
<b>Total</b>	<b>1,843</b>	<b>100</b>

#### Farms by Size

	Number	Percent <sup>b</sup>
1 to 9 acres	244	13
10 to 49 acres	712	39
50 to 179 acres	562	30
180 to 499 acres	240	13
500 to 999 acres	62	3
1,000 + acres	23	1
<b>Total</b>	<b>1,843</b>	<b>100</b>



## 2017 CENSUS OF AGRICULTURE Race/Ethnicity/Gender Profile

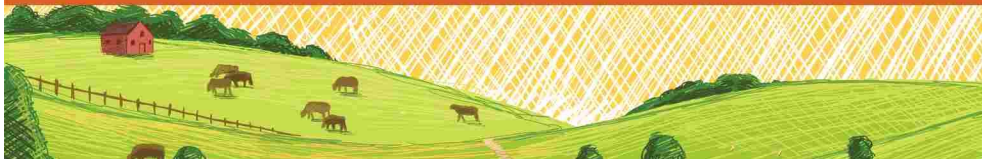
Market Value of Agricultural Products Sold			Total Producers <sup>c</sup>	3,084
	Sales (\$1,000)	No. of Farms		
<b>Total</b>	<b>38,463</b>	<b>1,843</b>	<b>Sex</b>	
			Male	1,883
			Female	1,201
<b>Crops</b>	<b>8,118</b>	<b>665</b>	<b>Age</b>	
Grains, oilseeds, dry beans, dry peas	2,759	48	<35	287
Tobacco	-	-	35 – 64	1,767
Cotton and cottonseed	-	-	65 and older	1,030
Vegetables, melons, potatoes, sweet potatoes	256	30		
Fruits, tree nuts, berries	(D)	24	<b>Primary occupation</b>	
Nursery, greenhouse, floriculture, sod	(D)	23	Farming	1,075
Cultivated Christmas trees, short rotation			Other	2,009
woody crops	-	-		
Other crops and hay	4,369	599	<b>Days worked off farm</b>	
			None	1,194
<b>Livestock, poultry, and products</b>	<b>30,345</b>	<b>1,146</b>	1 to 199	523
Poultry and eggs	49	92	200 +	1,367
Cattle and calves	27,520	940		
Milk from cows	1,661	9	<b>Other characteristics</b>	
Hogs and pigs	42	40	Hispanic/Latino/Spanish	33
Sheep, goats, wool, mohair, milk	301	87	With military service	345
Horses, ponies, mules, burros, donkeys	(D)	81	New and beginning farmers	1,035
Aquaculture	(D)	1		
Other animals and animal products	238	43	<b>Average age (years)</b>	<b>56.7</b>
<b>Top Crops in Acres <sup>d</sup></b>		<b>Percent of farms that:</b>	<b>Demographic Data in the Census of Agriculture</b>	
Forage (hay/haylage), all	58,891	Have internet access	74	The agriculture census is a complete count of U.S. farms and ranches and the people who operate them. Demographic information is available at national, state, and county levels, and for classes of farm and congressional districts. Results from the 2017 Census and earlier are available through the searchable database Quick Stats, the new Census Data Query Tool, downloadable PDF reports, maps, and topic-specific Highlights and Profiles.
Soybeans for beans	(D)	Farm organically	-	See also the video "What's New in the 2017 Census?" ( <a href="http://www.nass.usda.gov/Newsroom/VideoFeatures/index.php">www.nass.usda.gov/Newsroom/VideoFeatures/index.php</a> ).
Corn for grain	1,705	Sell directly to consumers	5	
Wheat for grain, all	1,611	Hire farm labor	18	
Field/grass seed crops, all	1,382	Are family farms	98	
<b>Livestock Inventory (Dec 31, 2017)</b>				
Broilers and other meat-type chickens	(D)			
Cattle and calves	68,017			
Goats	1,340			
Hogs and pigs	382			
Horses and ponies	2,172			
Layers	4,307			
Pullets	415			
Sheep and lambs	1,873			
Turkeys	47			

See 2017 Census of Agriculture, U.S. Summary and State Data, for complete footnotes, explanations, definitions, commodity descriptions, and methodology.

<sup>a</sup> This race alone or in combination with other races. <sup>b</sup> May not add to 100% due to rounding. <sup>c</sup> Data collected for a maximum of four producers per farm.

<sup>d</sup> Crop commodity names may be shortened; see full names at [www.nass.usda.gov/go/cropnames.pdf](http://www.nass.usda.gov/go/cropnames.pdf). <sup>e</sup> Position below the line does not indicate rank.

(D) Withheld to avoid disclosing data for individual operations. (NA) Not available. (Z) Less than half of the unit shown. (-) Represents zero.



## Greene County, Missouri

### Farms with Hispanic, Latino, or Spanish Producers

#### Total and Per Farm Overview, 2017

	Farms with Hispanic/Latino/Spanish Producers	All Farms
Number of farms	39	1,857
Land in farms (acres)	2,587	223,205
Average size of farm (acres)	66	120
<b>Total</b>	<b>(\$)</b>	<b>(\$)</b>
Market value of products sold	322,000	38,726,000
Government payments	(D)	807,000
Farm-related income	174,000	2,927,000
Total farm production expenses	644,000	48,482,000
Net cash farm income	-103,000	-6,022,000
<b>Per farm average</b>	<b>(\$)</b>	<b>(\$)</b>
Market value of products sold	8,246	20,854
Government payments (average per farm receiving)	(D)	7,081
Farm-related income	12,461	6,775
Total farm production expenses	16,505	26,108
Net cash farm income	-2,647	-3,243

#### Share of Sales by Type (%)

Crops	5
Livestock, poultry, and products	95

#### Land in Farms by Use (%) <sup>b</sup>

Cropland	36
Pastureland	50
Woodland	9
Other	4

#### Land Use Practices (% of farms)

No till	5
Reduced till	-
Intensive till	-
Cover crop	-

#### Farms by Value of Sales

	Number	Percent <sup>b</sup>
Less than \$2,500	15	38
\$2,500 to \$4,999	12	31
\$5,000 to \$9,999	6	15
\$10,000 to \$24,999	3	8
\$25,000 to \$49,999	-	-
\$50,000 to \$99,999	3	8
\$100,000 or more	-	-
<b>Total</b>	<b>39</b>	<b>100</b>

#### Farms by Size

	Number	Percent <sup>b</sup>
1 to 9 acres	11	28
10 to 49 acres	17	44
50 to 179 acres	8	21
180 to 499 acres	3	8
500 to 999 acres	-	-
1,000 + acres	-	-
<b>Total</b>	<b>39</b>	<b>100</b>

# 2017 CENSUS OF AGRICULTURE Race/Ethnicity/Gender Profile

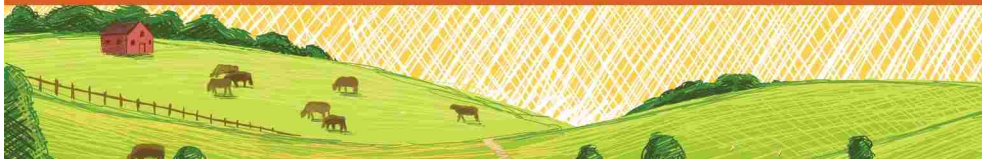
Market Value of Agricultural Products Sold			Total Producers <sup>c</sup>	39
	Sales (\$1,000)	No. of Farms		
<b>Total</b>	<b>322</b>	<b>39</b>	<b>Sex</b>	
			Male	22
			Female	17
<b>Crops</b>	<b>17</b>	<b>5</b>	<b>Age</b>	
Grains, oilseeds, dry beans, dry peas	-	-	<35	10
Tobacco	-	-	35 – 64	22
Cotton and cottonseed	-	-	65 and older	7
Vegetables, melons, potatoes, sweet potatoes	-	-	<b>Race</b>	
Fruits, tree nuts, berries	-	-	American Indian/Alaska Native	6
Nursery, greenhouse, floriculture, sod	-	-	Asian	-
Cultivated Christmas trees, short rotation	-	-	Black/African American	-
woody crops	-	-	Native Hawaiian/Pacific Islander	-
Other crops and hay	17	5	White	30
			More than one race	3
<b>Livestock, poultry, and products</b>	<b>305</b>	<b>31</b>	<b>Primary occupation</b>	
Poultry and eggs	-	-	Farming	7
Cattle and calves	268	19	Other	32
Milk from cows	-	-	<b>Days worked off farm</b>	
Hogs and pigs	1	7	None	4
Sheep, goats, wool, mohair, milk	5	6	1 to 199	11
Horses, ponies, mules, burros, donkeys	25	6	200 +	24
Aquaculture	-	-	<b>Other characteristics</b>	
Other animals and animal products	6	6	With military service	4
			New and beginning farmers	28
			<i>Average age (years)</i>	<i>44.9</i>
<b>Top Crops in Acres <sup>d</sup></b>		<b>Percent of farms that:</b>	<b>Demographic Data in the Census of Agriculture</b>	
Forage (hay/haylage), all	626	Have internet access	87	The agriculture census is a complete count of U.S. farms and ranches and the people who operate them. Demographic information is available at national, state, and county levels, and for classes of farm and congressional districts. Results from the 2017 Census and earlier are available through the searchable database Quick Stats, the new Census Data Query Tool, downloadable PDF reports, maps, and topic-specific Highlights and Profiles.
		Farm organically	-	See also the video "What's New in the 2017 Census?" ( <a href="http://www.nass.usda.gov/Newsroom/VideoFeatures/index.php">www.nass.usda.gov/Newsroom/VideoFeatures/index.php</a> ).
<b>Livestock Inventory (Dec 31, 2017)</b>		Sell directly to consumers	-	
Broilers and other meat-type chickens	-	Hire farm labor	8	
Cattle and calves	858	Are family farms	97	
Goats	9			
Hogs and pigs	45			
Horses and ponies	125			
Layers	37			
Pullets	-			
Sheep and lambs	84			
Turkeys	-			

See 2017 Census of Agriculture, U.S. Summary and State Data, for complete footnotes, explanations, definitions, commodity descriptions, and methodology.

<sup>a</sup> This race alone or in combination with other races. <sup>b</sup> May not add to 100% due to rounding. <sup>c</sup> Data collected for a maximum of four producers per farm.

<sup>d</sup> Crop commodity names may be shortened; see full names at [www.nass.usda.gov/go/croplnames.pdf](http://www.nass.usda.gov/go/croplnames.pdf). <sup>e</sup> Position below the line does not indicate rank.

(D) Withheld to avoid disclosing data for individual operations. (NA) Not available. (Z) Less than half of the unit shown. (-) Represents zero.



## Greene County, Missouri

### Farms with Female Producers

#### Total and Per Farm Overview, 2017

	Farms with Female Producers	All Farms
Number of farms	1,155	1,857
Land in farms (acres)	109,002	223,205
Average size of farm (acres)	94	120
<b>Total</b>	<b>(\$)</b>	<b>(\$)</b>
Market value of products sold	16,935,000	38,726,000
Government payments	433,000	807,000
Farm-related income	1,955,000	2,927,000
Total farm production expenses	23,140,000	48,482,000
Net cash farm income	-3,817,000	-6,022,000
<b>Per farm average</b>	<b>(\$)</b>	<b>(\$)</b>
Market value of products sold	14,662	20,854
Government payments (average per farm receiving)	7,210	7,081
Farm-related income	7,668	6,775
Total farm production expenses	20,035	26,108
Net cash farm income	-3,305	-3,243

#### Share of Sales by Type (%)

Crops	21
Livestock, poultry, and products	79

#### Land in Farms by Use (%) <sup>b</sup>

Cropland	34
Pastureland	50
Woodland	13
Other	3

#### Land Use Practices (% of farms)

No till	4
Reduced till	1
Intensive till	2
Cover crop	2

#### Farms by Value of Sales

	Number	Percent <sup>b</sup>
Less than \$2,500	535	46
\$2,500 to \$4,999	150	13
\$5,000 to \$9,999	173	15
\$10,000 to \$24,999	142	12
\$25,000 to \$49,999	77	7
\$50,000 to \$99,999	48	4
\$100,000 or more	30	3
<b>Total</b>	<b>1,155</b>	<b>100</b>

#### Farms by Size

	Number	Percent <sup>b</sup>
1 to 9 acres	180	16
10 to 49 acres	495	43
50 to 179 acres	326	28
180 to 499 acres	118	10
500 to 999 acres	26	2
1,000 + acres	10	1
<b>Total</b>	<b>1,155</b>	<b>100</b>





## 2017 CENSUS OF AGRICULTURE Race/Ethnicity/Gender Profile

Market Value of Agricultural Products Sold			Total Producers <sup>c</sup>	1,223
	Sales (\$1,000)	No. of Farms		
Total	16,935	1,155	Age	
			<35	138
			35 – 64	721
			65 and older	364
Crops	3,575	393	Race	
Grains, oilseeds, dry beans, dry peas	886	16	American Indian/Alaska Native	7
Tobacco	-	-	Asian	8
Cotton and cottonseed	-	-	Black/African American	-
Vegetables, melons, potatoes, sweet potatoes	233	24	Native Hawaiian/Pacific Islander	2
Fruits, tree nuts, berries	106	21	White	1,194
Nursery, greenhouse, floriculture, sod	461	15	More than one race	12
Cultivated Christmas trees, short rotation woody crops	-	-	Primary occupation	
Other crops and hay	1,890	353	Farming	364
			Other	859
Livestock, poultry, and products	13,360	710	Days worked off farm	
Poultry and eggs	46	81	None	494
Cattle and calves	12,125	552	1 to 199	230
Milk from cows	(D)	3	200 +	499
Hogs and pigs	(D)	27	Other characteristics	
Sheep, goats, wool, mohair, milk	264	73	Hispanic/Latino/Spanish	17
Horses, ponies, mules, burros, donkeys	440	61	With military service	26
Aquaculture	-	-	New and beginning farmers	465
Other animals and animal products	32	22		
			Average age (years)	55.4
Top Crops in Acres <sup>d</sup>			Demographic Data in the Census of Agriculture	
Forage (hay/haylage), all	28,462	Have internet access	76	The agriculture census is a complete count of U.S. farms and ranches and the people who operate them. Demographic information is available at national, state, and county levels, and for classes of farm and congressional districts. Results from the 2017 Census and earlier are available through the searchable database Quick Stats, the new Census Data Query Tool, downloadable PDF reports, maps, and topic-specific Highlights and Profiles.  See also the video “What’s New in the 2017 Census?”( <a href="http://www.nass.usda.gov/Newsroom/VideoFeatures/index.php">www.nass.usda.gov/Newsroom/VideoFeatures/index.php</a> ).
Soybeans for beans	2,222	Farm organically	-	
Wheat for grain, all	512	Sell directly to consumers	4	
Corn for grain	398	Hire farm labor	16	
Sunflower seed, all	(D)	Are family farms	98	
Livestock Inventory (Dec 31, 2017)				
Broilers and other meat-type chickens	161			
Cattle and calves	32,233			
Goats	957			
Hogs and pigs	200			
Horses and ponies	1,690			
Layers	3,896			
Pullets	355			
Sheep and lambs	1,410			
Turkeys	47			

See 2017 Census of Agriculture, U.S. Summary and State Data, for complete footnotes, explanations, definitions, commodity descriptions, and methodology.

<sup>a</sup> This race alone or in combination with other races. <sup>b</sup> May not add to 100% due to rounding. <sup>c</sup> Data collected for a maximum of four producers per farm.

<sup>d</sup> Crop commodity names may be shortened; see full names at [www.nass.usda.gov/go/cropnames.pdf](http://www.nass.usda.gov/go/cropnames.pdf). <sup>e</sup> Position below the line does not indicate rank.

(D) Withheld to avoid disclosing data for individual operations. (NA) Not available. (Z) Less than half of the unit shown. (-) Represents zero.