



## **Pershing County, Nevada Farms with American Indian or Alaska Native Producers<sup>a</sup>**

**Data not available at this geographic level for farms with American Indian or Alaska Native Producers.**

<sup>a</sup> This race alone or in combination with other races.





## Pershing County, Nevada Farms with Asian Producers<sup>a</sup>

Data not available at this geographic level for farms with Asian Producers.

<sup>a</sup> This race alone or in combination with other races.





## Pershing County, Nevada Farms with Black or African American Producers<sup>a</sup>

**Data not available at this geographic level for farms with Black or African American Producers.**

<sup>a</sup> This race alone or in combination with other races.





## **Pershing County, Nevada Farms with Native Hawaiian or Other Pacific Islander Producers<sup>a</sup>**

**Data not available at this geographic level for farms with Native Hawaiian or Other Pacific Islander Producers.**

<sup>a</sup> This race alone or in combination with other races.





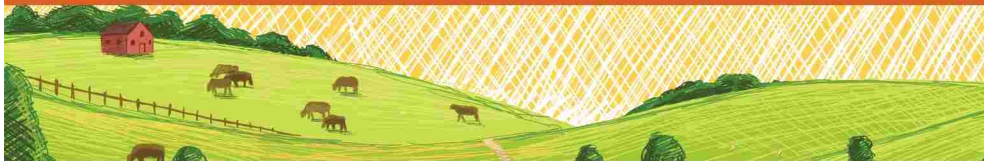


## Pershing County, Nevada Farms with White Producers<sup>a</sup>

**Data not available at this geographic level for farms with White Producers.**

<sup>a</sup> This race alone or in combination with other races.

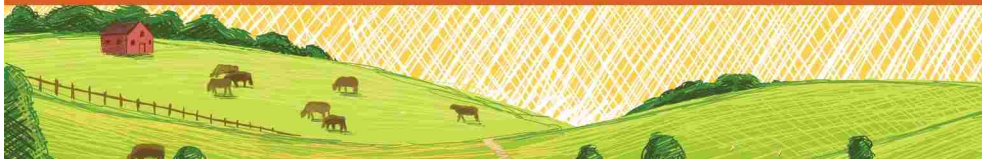




## **Pershing County, Nevada Farms with Hispanic, Latino, or Spanish Producers**

Data not available at this geographic level for farms with Hispanic, Latino, or Spanish Producers.





## Pershing County, Nevada

### Farms with Female Producers

#### Total and Per Farm Overview, 2017

	Farms with Female Producers	All Farms
Number of farms	88	154
Land in farms (acres)	164,625	330,294
Average size of farm (acres)	1,871	2,145
<b>Total</b>	<b>(\$)</b>	<b>(\$)</b>
Market value of products sold	14,503,000	33,820,000
Government payments	140,000	689,000
Farm-related income	372,000	938,000
Total farm production expenses	13,822,000	28,104,000
Net cash farm income	1,193,000	7,344,000
<b>Per farm average</b>	<b>(\$)</b>	<b>(\$)</b>
Market value of products sold	164,811	219,613
Government payments (average per farm receiving)	7,791	17,232
Farm-related income	21,876	26,061
Total farm production expenses	157,073	182,491
Net cash farm income	13,557	47,690

#### Share of Sales by Type (%)

Crops	50
Livestock, poultry, and products	50

#### Land in Farms by Use (%) <sup>b</sup>

Cropland	14
Pastureland	84
Woodland	(D)
Other	(D)

#### Land Use Practices (% of farms)

No till	9
Reduced till	1
Intensive till	16
Cover crop	6

#### Farms by Value of Sales

	Number	Percent <sup>b</sup>
Less than \$2,500	35	40
\$2,500 to \$4,999	2	2
\$5,000 to \$9,999	13	15
\$10,000 to \$24,999	7	8
\$25,000 to \$49,999	3	3
\$50,000 to \$99,999	4	5
\$100,000 or more	24	27
<b>Total</b>	<b>88</b>	<b>100</b>

#### Farms by Size

	Number	Percent <sup>b</sup>
1 to 9 acres	14	16
10 to 49 acres	28	32
50 to 179 acres	15	17
180 to 499 acres	5	6
500 to 999 acres	6	7
1,000 + acres	20	23
<b>Total</b>	<b>88</b>	<b>100</b>



# 2017 CENSUS OF AGRICULTURE Race/Ethnicity/Gender Profile

Market Value of Agricultural Products Sold			Total Producers <sup>c</sup>	92
	Sales (\$1,000)	No. of Farms		
<b>Total</b>	<b>14,503</b>	<b>88</b>	<b>Age</b>	
			<35	9
			35 – 64	63
			65 and older	20
<b>Crops</b>	<b>7,227</b>	<b>35</b>	<b>Race</b>	
Grains, oilseeds, dry beans, dry peas	1,064	9	American Indian/Alaska Native	6
Tobacco	-	-	Asian	-
Cotton and cottonseed	-	-	Black/African American	-
Vegetables, melons, potatoes, sweet potatoes	-	-	Native Hawaiian/Pacific Islander	-
Fruits, tree nuts, berries	-	-	White	85
Nursery, greenhouse, floriculture, sod	-	-	More than one race	1
Cultivated Christmas trees, short rotation woody crops	-	-		
Other crops and hay	6,163	35	<b>Primary occupation</b>	
			Farming	52
			Other	40
<b>Livestock, poultry, and products</b>	<b>7,276</b>	<b>55</b>	<b>Days worked off farm</b>	
Poultry and eggs	(D)	13	None	38
Cattle and calves	7,140	33	1 to 199	25
Milk from cows	-	-	200 +	29
Hogs and pigs	(D)	2		
Sheep, goats, wool, mohair, milk	31	6	<b>Other characteristics</b>	
Horses, ponies, mules, burros, donkeys	96	9	Hispanic/Latino/Spanish	1
Aquaculture	-	-	With military service	7
Other animals and animal products	-	-	New and beginning farmers	28
			<b>Average age (years)</b>	<b>57.1</b>
<b>Top Crops in Acres <sup>d</sup></b>		<b>Percent of farms that:</b>		
Forage (hay/haylage), all	13,694	Have internet access	<b>91</b>	
Corn for silage	808			
Corn for grain	(D)	Farm organically	<b>-</b>	
Wheat for grain, all	235			
Pears, all	(D)	Sell directly to consumers	<b>2</b>	
<b>Livestock Inventory (Dec 31, 2017)</b>		Hire farm labor	<b>40</b>	
Broilers and other meat-type chickens	-			
Cattle and calves	9,979	Are family farms	<b>98</b>	
Goats	401			
Hogs and pigs	77			
Horses and ponies	325			
Layers	454			
Pullets	126			
Sheep and lambs	82			
Turkeys	29			

## Demographic Data in the Census of Agriculture

The agriculture census is a complete count of U.S. farms and ranches and the people who operate them. Demographic information is available at national, state, and county levels, and for classes of farm and congressional districts. Results from the 2017 Census and earlier are available through the searchable database Quick Stats, the new Census Data Query Tool, downloadable PDF reports, maps, and topic-specific Highlights and Profiles.

See also the video "What's New in the 2017 Census?" ([www.nass.usda.gov/Newsroom/Video/Features/index.php](http://www.nass.usda.gov/Newsroom/Video/Features/index.php)).

See 2017 Census of Agriculture, U.S. Summary and State Data, for complete footnotes, explanations, definitions, commodity descriptions, and methodology.

<sup>a</sup> This race alone or in combination with other races. <sup>b</sup> May not add to 100% due to rounding. <sup>c</sup> Data collected for a maximum of four producers per farm.

<sup>d</sup> Crop commodity names may be shortened; see full names at [www.nass.usda.gov/go/cropnames.pdf](http://www.nass.usda.gov/go/cropnames.pdf). <sup>e</sup> Position below the line does not indicate rank.

(D) Withheld to avoid disclosing data for individual operations. (NA) Not available. (Z) Less than half of the unit shown. (-) Represents zero.