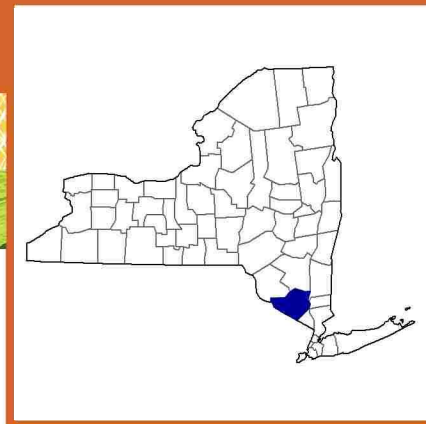


Orange County, New York Farms with American Indian or Alaska Native Producers^a

Data not available at this geographic level for farms with American Indian or Alaska Native Producers.

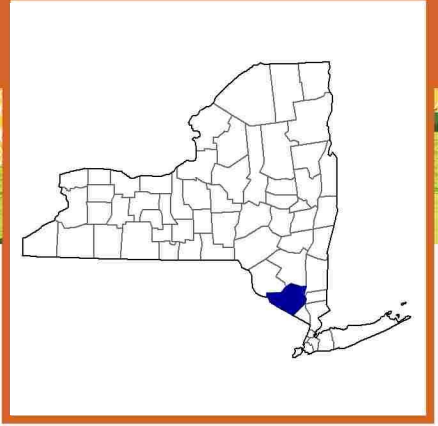
^a This race alone or in combination with other races.



Orange County, New York Farms with Asian Producers^a

Data not available at this geographic level for farms with Asian Producers.

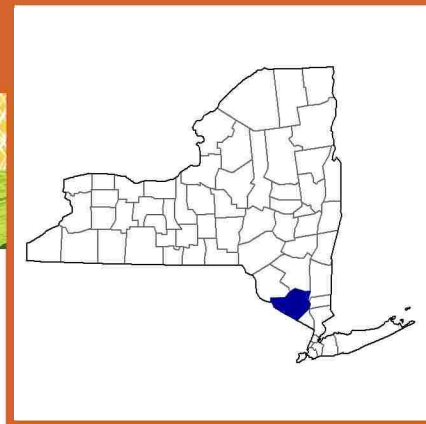
^a This race alone or in combination with other races.



Orange County, New York Farms with Black or African American Producers^a

Data not available at this geographic level for farms with Black or African American Producers.

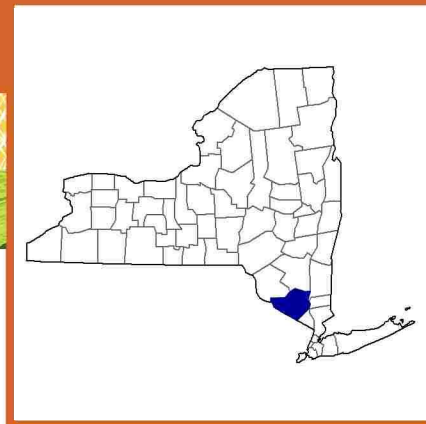
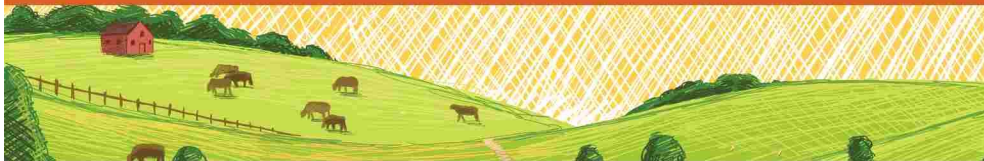
^a This race alone or in combination with other races.



Orange County, New York Farms with Native Hawaiian or Other Pacific Islander Producers^a

Data not available at this geographic level for farms with Native Hawaiian or Other Pacific Islander Producers.

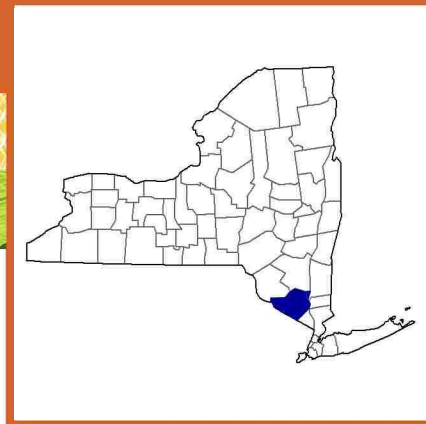
^a This race alone or in combination with other races.



Orange County, New York Farms with White Producers^a

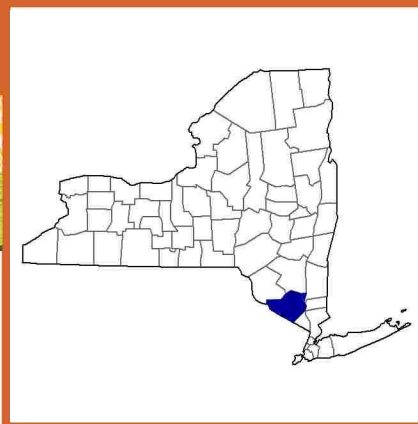
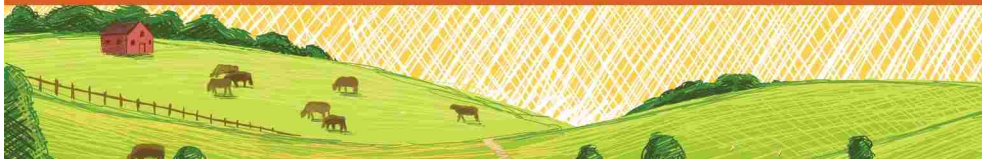
Data not available at this geographic level for farms with White Producers.

^a This race alone or in combination with other races.



Orange County, New York Farms with Hispanic, Latino, or Spanish Producers

Data not available at this geographic level for farms with Hispanic, Latino, or Spanish Producers.



Orange County, New York Farms with Female Producers

Total and Per Farm Overview, 2017

	Farms with Female Producers	All Farms
Number of farms	371	621
Land in farms (acres)	38,360	81,192
Average size of farm (acres)	103	131
Total	(\$)	(\$)
Market value of products sold	41,025,000	87,915,000
Government payments	155,000	463,000
Farm-related income	5,610,000	8,196,000
Total farm production expenses	48,095,000	85,594,000
Net cash farm income	-1,305,000	10,981,000
Per farm average	(\$)	(\$)
Market value of products sold	110,579	141,571
Government payments (average per farm receiving)	4,831	6,806
Farm-related income	31,877	31,404
Total farm production expenses	129,635	137,832
Net cash farm income	-3,517	17,683

Share of Sales by Type (%)

Crops	79
Livestock, poultry, and products	21

Land in Farms by Use (%) ^b

Cropland	51
Pastureland	13
Woodland	22
Other	13

Land Use Practices (% of farms)

No till	11
Reduced till	10
Intensive till	19
Cover crop	15

Farms by Value of Sales

	Number	Percent ^b
Less than \$2,500	149	40
\$2,500 to \$4,999	22	6
\$5,000 to \$9,999	30	8
\$10,000 to \$24,999	49	13
\$25,000 to \$49,999	43	12
\$50,000 to \$99,999	18	5
\$100,000 or more	60	16
Total	371	100

Farms by Size

	Number	Percent ^b
1 to 9 acres	59	16
10 to 49 acres	133	36
50 to 179 acres	114	31
180 to 499 acres	56	15
500 to 999 acres	6	2
1,000 + acres	3	1
Total	371	100



2017 CENSUS OF AGRICULTURE Race/Ethnicity/Gender Profile

Market Value of Agricultural Products Sold			Total Producers ^c	424
	Sales (\$1,000)	No. of Farms		
Total	41,025	371	Age	
			<35	37
			35 – 64	284
			65 and older	103
Crops	32,583	190	Race	
Grains, oilseeds, dry beans, dry peas	1,171	24	American Indian/Alaska Native	-
Tobacco	-	-	Asian	8
Cotton and cottonseed	-	-	Black/African American	4
Vegetables, melons, potatoes, sweet potatoes	8,311	68	Native Hawaiian/Pacific Islander	-
Fruits, tree nuts, berries	5,481	31	White	406
Nursery, greenhouse, floriculture, sod	16,111	41	More than one race	6
Cultivated Christmas trees, short rotation woody crops	106	5	Primary occupation	
Other crops and hay	1,405	103	Farming	221
			Other	203
Livestock, poultry, and products	8,442	156	Days worked off farm	
Poultry and eggs	142	67	None	163
Cattle and calves	576	34	1 to 199	131
Milk from cows	3,998	12	200 +	130
Hogs and pigs	15	9	Other characteristics	
Sheep, goats, wool, mohair, milk	309	38	Hispanic/Latino/Spanish	17
Horses, ponies, mules, burros, donkeys	2,352	38	With military service	5
Aquaculture	75	3	New and beginning farmers	137
Other animals and animal products	976	31	Average age (years)	55.1
Top Crops in Acres ^d		Percent of farms that:	Demographic Data in the Census of Agriculture	
Forage (hay/haylage), all	7,061	Have internet access	90	<p>The agriculture census is a complete count of U.S. farms and ranches and the people who operate them. Demographic information is available at national, state, and county levels, and for classes of farm and congressional districts. Results from the 2017 Census and earlier are available through the searchable database Quick Stats, the new Census Data Query Tool, downloadable PDF reports, maps, and topic-specific Highlights and Profiles.</p> <p>See also the video “What’s New in the 2017 Census?” (www.nass.usda.gov/Newsroom/VideoFeatures/index.php).</p>
Vegetables harvested, all	1,558	Farm organically	3	
Corn for grain	911	Sell directly to consumers	20	
Sod harvested	(D)	Hire farm labor	38	
Soybeans for beans	896	Are family farms	96	
Livestock Inventory (Dec 31, 2017)				
Broilers and other meat-type chickens	595			
Cattle and calves	2,630			
Goats	807			
Hogs and pigs	123			
Horses and ponies	1,997			
Layers	6,887			
Pullets	3,341			
Sheep and lambs	526			
Turkeys	85			

See 2017 Census of Agriculture, U.S. Summary and State Data, for complete footnotes, explanations, definitions, commodity descriptions, and methodology.

^a This race alone or in combination with other races. ^b May not add to 100% due to rounding. ^c Data collected for a maximum of four producers per farm.

^d Crop commodity names may be shortened; see full names at www.nass.usda.gov/go/cropnames.pdf. ^e Position below the line does not indicate rank.

(D) Withheld to avoid disclosing data for individual operations. (NA) Not available. (Z) Less than half of the unit shown. (-) Represents zero.