



Union County, North Carolina Farms with American Indian or Alaska Native Producers^a

Data not available at this geographic level for farms with American Indian or Alaska Native Producers.

^a This race alone or in combination with other races.



Union County, North Carolina Farms with Asian Producers^a

Data not available at this geographic level for farms with Asian Producers.

^a This race alone or in combination with other races.



Union County, North Carolina Farms with Black or African American Producers^a

Data not available at this geographic level for farms with Black or African American Producers.

^a This race alone or in combination with other races.



Union County, North Carolina Farms with Native Hawaiian or Other Pacific Islander Producers^a

Data not available at this geographic level for farms with Native Hawaiian or Other Pacific Islander Producers.

^a This race alone or in combination with other races.



Union County, North Carolina Farms with White Producers^a

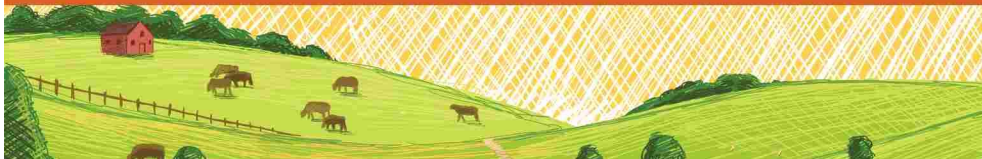
Data not available at this geographic level for farms with White Producers.

^a This race alone or in combination with other races.



Union County, North Carolina Farms with Hispanic, Latino, or Spanish Producers

Data not available at this geographic level for farms with Hispanic, Latino, or Spanish Producers.



Union County, North Carolina Farms with Female Producers

Total and Per Farm Overview, 2017

	Farms with Female Producers	All Farms
Number of farms	466	957
Land in farms (acres)	67,984	186,626
Average size of farm (acres)	146	195
Total	(\$)	(\$)
Market value of products sold	218,267,000	481,981,000
Government payments	687,000	2,529,000
Farm-related income	2,367,000	4,837,000
Total farm production expenses	145,716,000	312,631,000
Net cash farm income	75,605,000	176,715,000
Per farm average	(\$)	(\$)
Market value of products sold	468,384	503,637
Government payments (average per farm receiving)	15,974	20,898
Farm-related income	16,553	15,162
Total farm production expenses	312,696	326,678
Net cash farm income	162,242	184,656

Share of Sales by Type (%)

Crops	17
Livestock, poultry, and products	83

Land in Farms by Use (%) ^b

Cropland	74
Pastureland	13
Woodland	10
Other	3

Land Use Practices (% of farms)

No till	10
Reduced till	5
Intensive till	4
Cover crop	5

Farms by Value of Sales

	Number	Percent ^b
Less than \$2,500	209	45
\$2,500 to \$4,999	48	10
\$5,000 to \$9,999	61	13
\$10,000 to \$24,999	42	9
\$25,000 to \$49,999	15	3
\$50,000 to \$99,999	9	2
\$100,000 or more	82	18
Total	466	100

Farms by Size

	Number	Percent ^b
1 to 9 acres	59	13
10 to 49 acres	264	57
50 to 179 acres	108	23
180 to 499 acres	20	4
500 to 999 acres	5	1
1,000 + acres	10	2
Total	466	100



2017 CENSUS OF AGRICULTURE Race/Ethnicity/Gender Profile

Market Value of Agricultural Products Sold			Total Producers ^c	496
	Sales (\$1,000)	No. of Farms		
Total	218,267	466	Age	
			<35	33
			35 – 64	309
			65 and older	154
Crops	37,797	173	Race	
Grains, oilseeds, dry beans, dry peas	25,998	45	American Indian/Alaska Native	-
Tobacco	-	-	Asian	6
Cotton and cottonseed	-	-	Black/African American	-
Vegetables, melons, potatoes, sweet potatoes	119	16	Native Hawaiian/Pacific Islander	-
Fruits, tree nuts, berries	240	13	White	490
Nursery, greenhouse, floriculture, sod	10,703	17	More than one race	-
Cultivated Christmas trees, short rotation woody crops	-	-	Primary occupation	
Other crops and hay	737	100	Farming	168
			Other	328
Livestock, poultry, and products	180,470	289	Days worked off farm	
Poultry and eggs	167,942	115	None	198
Cattle and calves	(D)	150	1 to 199	83
Milk from cows	(D)	1	200 +	215
Hogs and pigs	(D)	5	Other characteristics	
Sheep, goats, wool, mohair, milk	85	41	Hispanic/Latino/Spanish	4
Horses, ponies, mules, burros, donkeys	1,852	24	With military service	5
Aquaculture	-	-	New and beginning farmers	187
Other animals and animal products	69	17		
			Average age (years)	57.4
Top Crops in Acres ^d			Demographic Data in the Census of Agriculture	
Soybeans for beans	27,637	Have internet access	80	The agriculture census is a complete count of U.S. farms and ranches and the people who operate them. Demographic information is available at national, state, and county levels, and for classes of farm and congressional districts. Results from the 2017 Census and earlier are available through the searchable database Quick Stats, the new Census Data Query Tool, downloadable PDF reports, maps, and topic-specific Highlights and Profiles. See also the video “What’s New in the 2017 Census?”(www.nass.usda.gov/Newsroom/VideoFeatures/index.php).
Wheat for grain, all	19,831	Farm organically	1	
Corn for grain	12,072	Sell directly to consumers	5	
Forage (hay/haylage), all	4,808	Hire farm labor	21	
Sorghum for grain	(D)	Are family farms	97	
Livestock Inventory (Dec 31, 2017)				
Broilers and other meat-type chickens	3,128,377			
Cattle and calves	6,436			
Goats	828			
Hogs and pigs	(D)			
Horses and ponies	809			
Layers	(D)			
Pullets	314,330			
Sheep and lambs	532			
Turkeys	1,458,261			

See 2017 Census of Agriculture, U.S. Summary and State Data, for complete footnotes, explanations, definitions, commodity descriptions, and methodology.

^a This race alone or in combination with other races. ^b May not add to 100% due to rounding. ^c Data collected for a maximum of four producers per farm.

^d Crop commodity names may be shortened; see full names at www.nass.usda.gov/go/cropnames.pdf. ^e Position below the line does not indicate rank.

(D) Withheld to avoid disclosing data for individual operations. (NA) Not available. (Z) Less than half of the unit shown. (-) Represents zero.