



Allen County, Ohio Farms with American Indian or Alaska Native Producers^a

Data not available at this geographic level for farms with American Indian or Alaska Native Producers.

^a This race alone or in combination with other races.



Allen County, Ohio Farms with Asian Producers^a

Data not available at this geographic level for farms with Asian Producers.

^a This race alone or in combination with other races.



Allen County, Ohio Farms with Black or African American Producers^a

Data not available at this geographic level for farms with Black or African American Producers.

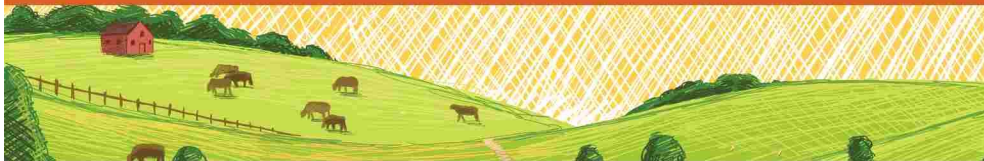
^a This race alone or in combination with other races.



Allen County, Ohio Farms with Native Hawaiian or Other Pacific Islander Producers^a

Data not available at this geographic level for farms with Native Hawaiian or Other Pacific Islander Producers.

^a This race alone or in combination with other races.



Allen County, Ohio Farms with White Producers^a

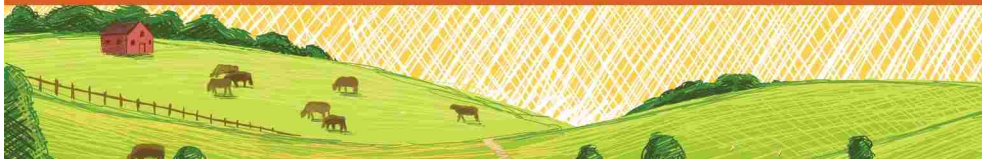
Data not available at this geographic level for farms with White Producers.

^a This race alone or in combination with other races.



Allen County, Ohio Farms with Hispanic, Latino, or Spanish Producers

Data not available at this geographic level for farms with Hispanic, Latino, or Spanish Producers.



Allen County, Ohio

Farms with Female Producers

Total and Per Farm Overview, 2017

	Farms with Female Producers	All Farms
Number of farms	340	855
Land in farms (acres)	62,345	186,623
Average size of farm (acres)	183	218
Total	(\$)	(\$)
Market value of products sold	37,838,000	139,911,000
Government payments	1,712,000	5,704,000
Farm-related income	1,825,000	4,736,000
Total farm production expenses	32,910,000	114,318,000
Net cash farm income	8,465,000	36,032,000
Per farm average	(\$)	(\$)
Market value of products sold	111,289	163,638
Government payments (average per farm receiving)	8,151	9,851
Farm-related income	11,772	12,019
Total farm production expenses	96,793	133,705
Net cash farm income	24,896	42,143

Share of Sales by Type (%)

Crops	76
Livestock, poultry, and products	24

Land in Farms by Use (%) ^b

Cropland	91
Pastureland	2
Woodland	5
Other	3

Land Use Practices (% of farms)

No till	33
Reduced till	29
Intensive till	19
Cover crop	13

Farms by Value of Sales

	Number	Percent ^b
Less than \$2,500	116	34
\$2,500 to \$4,999	23	7
\$5,000 to \$9,999	29	9
\$10,000 to \$24,999	42	12
\$25,000 to \$49,999	25	7
\$50,000 to \$99,999	17	5
\$100,000 or more	88	26
Total	340	100

Farms by Size

	Number	Percent ^b
1 to 9 acres	72	21
10 to 49 acres	122	36
50 to 179 acres	63	19
180 to 499 acres	46	14
500 to 999 acres	24	7
1,000 + acres	13	4
Total	340	100

2017 CENSUS OF AGRICULTURE Race/Ethnicity/Gender Profile

Market Value of Agricultural Products Sold			Total Producers ^c	363
	Sales (\$1,000)	No. of Farms		
Total	37,838	340	Age	
			<35	44
			35 – 64	202
			65 and older	117
Crops	28,708	215	Race	
Grains, oilseeds, dry beans, dry peas	25,545	178	American Indian/Alaska Native	1
Tobacco	-	-	Asian	-
Cotton and cottonseed	-	-	Black/African American	-
Vegetables, melons, potatoes, sweet potatoes	(D)	11	Native Hawaiian/Pacific Islander	-
Fruits, tree nuts, berries	(D)	3	White	362
Nursery, greenhouse, floriculture, sod	2,156	9	More than one race	-
Cultivated Christmas trees, short rotation woody crops	-	-	Primary occupation	
Other crops and hay	(D)	50	Farming	90
			Other	273
Livestock, poultry, and products	9,130	96	Days worked off farm	
Poultry and eggs	26	31	None	143
Cattle and calves	2,755	42	1 to 199	73
Milk from cows	-	-	200 +	147
Hogs and pigs	4,290	21	Other characteristics	
Sheep, goats, wool, mohair, milk	160	23	Hispanic/Latino/Spanish	2
Horses, ponies, mules, burros, donkeys	954	13	With military service	2
Aquaculture	-	-	New and beginning farmers	100
Other animals and animal products	945	10		
			Average age (years)	56.3
Top Crops in Acres ^d			Demographic Data in the Census of Agriculture	
Soybeans for beans	27,854	Have internet access	81	The agriculture census is a complete count of U.S. farms and ranches and the people who operate them. Demographic information is available at national, state, and county levels, and for classes of farm and congressional districts. Results from the 2017 Census and earlier are available through the searchable database Quick Stats, the new Census Data Query Tool, downloadable PDF reports, maps, and topic-specific Highlights and Profiles. See also the video “What’s New in the 2017 Census?”(www.nass.usda.gov/Newsroom/VideoFeatures/index.php).
Corn for grain	21,067	Farm organically	(Z)	
Forage (hay/haylage), all	2,465	Sell directly to consumers	9	
Wheat for grain, all	2,299	Hire farm labor	21	
Popcorn	(D)	Are family farms	97	
Livestock Inventory (Dec 31, 2017)				
Broilers and other meat-type chickens	220			
Cattle and calves	1,984			
Goats	479			
Hogs and pigs	13,198			
Horses and ponies	361			
Layers	1,404			
Pullets	172			
Sheep and lambs	692			
Turkeys	25			

See 2017 Census of Agriculture, U.S. Summary and State Data, for complete footnotes, explanations, definitions, commodity descriptions, and methodology.

^a This race alone or in combination with other races. ^b May not add to 100% due to rounding. ^c Data collected for a maximum of four producers per farm.

^d Crop commodity names may be shortened; see full names at www.nass.usda.gov/go/cropnames.pdf. ^e Position below the line does not indicate rank.

(D) Withheld to avoid disclosing data for individual operations. (NA) Not available. (Z) Less than half of the unit shown. (-) Represents zero.